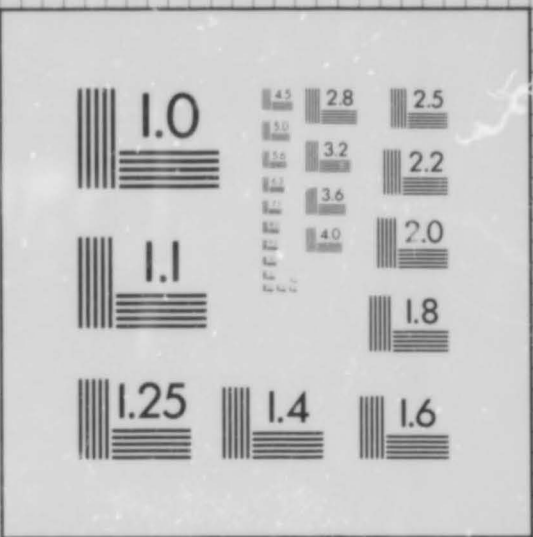


10 PT. ABCDEFGHIJKLMNOPQRSTUVWXYZ
 abcdefghijklmnopqrstuvwxyz
 1234567890

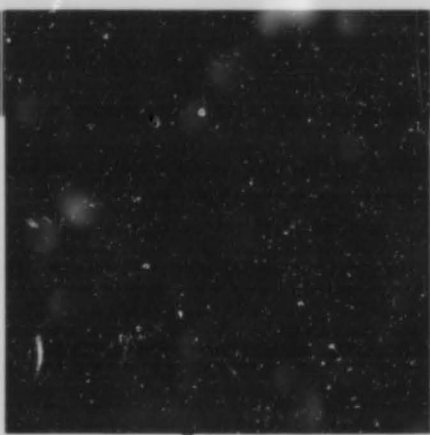
8 PT. ABCDEFGHIJKLMNOPQRSTUVWXYZ
 abcdefghijklmnopqrstuvwxyz1234567890

6 PT. ABCDEFGHIJKLMNOPQRSTUVWXYZ
 abcdefghijklmnopqrstuvwxyz1234567890

4 PT. ABCDEFGHIJKLMNOPQRSTUVWXYZ
 abcdefghijklmnopqrstuvwxyz1234567890



100mm



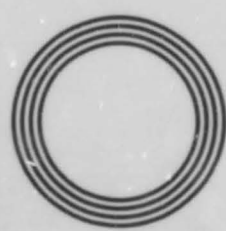
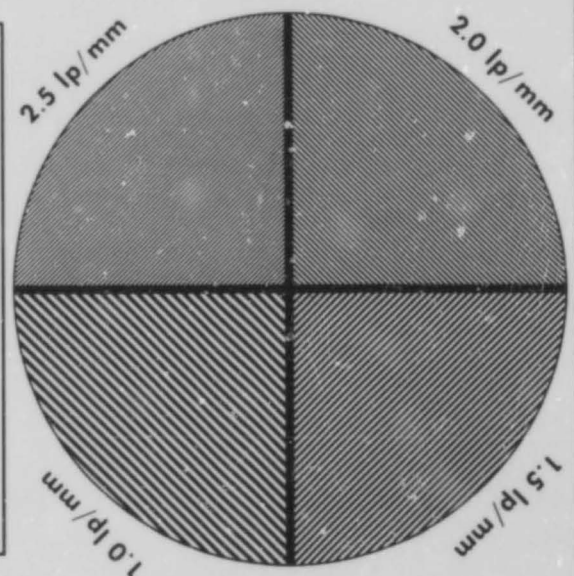
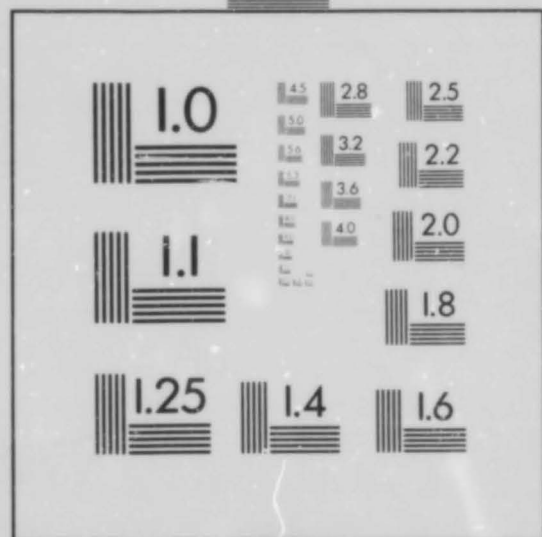
10 PT. ABCDEFGHIJKLMNOPQRSTUVWXYZ
 abcdefghijklmnopqrstuvwxyz
 1234567890

8 PT. ABCDEFGHIJKLMNOPQRSTUVWXYZ
 abcdefghijklmnopqrstuvwxyz1234567890

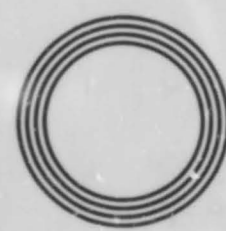
6 PT. ABCDEFGHIJKLMNOPQRSTUVWXYZ
 abcdefghijklmnopqrstuvwxyz1234567890

4 PT. ABCDEFGHIJKLMNOPQRSTUVWXYZ
 abcdefghijklmnopqrstuvwxyz1234567890

2.5 lp/mm



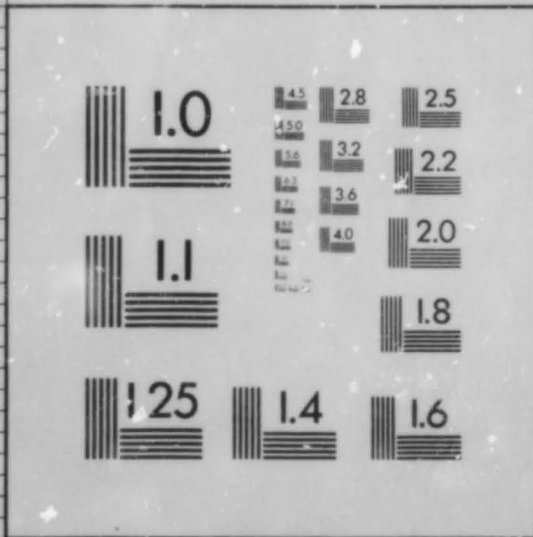
1.0 lp/mm



1.0 lp/mm



IMAGE SYSTEM
 TEST TARGET
 U.S. DEPARTMENT OF COMMERCE
 PATENT AND TRADEMARK OFFICE

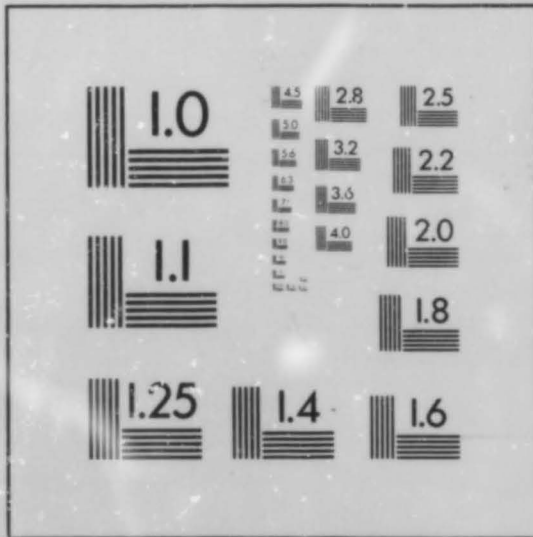


10 PT. ABCDEFGHIJKLMNOPQRSTUVWXYZ
 abcdefghijklmnopqrstuvwxyz
 1234567890

8 PT. ABCDEFGHIJKLMNOPQRSTUVWXYZ
 abcdefghijklmnopqrstuvwxyz1234567890

6 PT. ABCDEFGHIJKLMNOPQRSTUVWXYZ
 abcdefghijklmnopqrstuvwxyz1234567890

4 PT. ABCDEFGHIJKLMNOPQRSTUVWXYZ
 abcdefghijklmnopqrstuvwxyz1234567890



**A Late Neolithic,
Saxon and
Medieval Site at
Middle Harling,
Norfolk**

by Andrew Rogerson

with contributions by
Marion Archibald, Justine Bayley,
John Cherry, Catherine Coutts,
Carol Cunningham, Paul Drury,
Francis Healy, Kathy Kilmurry,
Sue Margeson and Rosemary Powers

illustrations by
Steven Ashley

and photographs by
David Wicks

**East Anglian Archaeology
Report No. 74, 1995**

The British Museum

**Field Archaeology Division
Norfolk Museums Service**

EAST ANGLIAN ARCHAEOLOGY
REPORT NO. 74

Published by
The British Museum
London WC1B 3DG
and
Field Archaeology Division
Norfolk Museums Service
Union House
Gressenhall
Dereham
Norfolk NR20 4DR

in conjunction with
The Scole Archaeological Committee

Editor: Peter Wade-Martins
EAA Managing Editor: Jenny Glazebrook

Scole Editorial sub-committee:
David Buckley, County Archaeologist, Essex Planning Department
Keith Wade, County Archaeological Officer, Suffolk Planning Department
Peter Wade-Martins, County Field Archaeologist, Norfolk Museums Service
Stanley West

Set in Times Roman by Joan Daniells using ® Ventura Publisher
Printed by

© British Museum/Field Archaeology Division, Norfolk Museums Service

ISBN 0 905594 17 7

For details of *East Anglian Archaeology*, see inside front cover

Cover illustration:
Group of representative coins from the Middle Harling hoard
(copyright British Museum, by kind permission of the Trustees)

Contents of Microfiche

Table 2	Composition and incidence of lithic material from prehistoric contexts	A5-6
Table 5	Dimensions and proportions of complete retouched flakes from 5m square 215/515	A7
Table 6	Dimensions and proportions of complete retouched flakes from 5m square 230/520	A8
Table 7	Description categories used for retouched pieces	A9-10
Table 8	Chisel arrowhead typology	A11
Table 9	Scraper typology	A12
Table 10	Dimensions of complete scrapers	A13

Table 2 (microfiche). Composition and incidence of lithic material from prehistoric contexts

AS

Contexts	Cores	Irregular waste	Flakes	Chisel arrowhead	? Chisel arrowhead	Flake scrapers	Other scrapers	Borers	Backed knife	Notch	Serrated pieces	Miscellaneous retouched pieces	Totals	'Pot-boilers'	Burnt flint (reddened)	Burnt sandstone	Burnt quartzite	Unburnt sandstone	Unburnt igneous rock	Drawings
318			5										5							
319	8	1	3										12	2						
327 (327(S ½ of fill)	9	13	209					1			3		235			1				F6
(342(N ½ of fill, sieved)	10	21	500			3	2				1	2	539	1		1	4			F3
338	6	6	120	1	1	1					1	1	137							F1, F2, F4
789 (784(top layer)	7	1	44					1			1		54			1				F15
(787(middle layer)	2		30								1		33							
(788(bottom layer)			9								1		10							
794 (795(W ½ of upper layer)			7				1		1				9							F16
(822(E ½ of upper layer, sieved)	1	3	60					1					65							
(796(lower layer, sieved)	33	83	1639			7				1	1	3	1767	12		10			1	F7 - F14, F17 - F18
823	2	2	63										67				3			
Totals	78	130	2689	1	1	11	3	3	1	1	9	6	2933	13	2	13	7	1	1	
Drawings	F7-F11	F12		F1	F2	F3 F4 F13 F14	F5	F6 F15	F16	F17	F18									

Where a context is described as sieved its fill has been put through a 4mm dry sieve.

AS

Table 5 (microfiche). Dimensions and proportions of complete, unretouched flakes from 5m square 215515

5m square 215515: 124 complete, unretouched flakes over 10mm long from non-prehistoric contexts

13 primary flakes (10.5%), 77 secondary flakes (62.1%), 34 tertiary flakes (27.4%), 19 flakes with faceted butts (15.3%)

	<u>Length(mm)</u>						
	10	20	30	40	50	60+	
all flakes	13	40	42	17	8	4	
	10.4%	32.9%	33.9%	13.7%	6.5%	3.2%	
primary flakes	3	2	3	2	2	1	
secondary flakes	1	25	30	14	4	3	
tertiary flakes	9	13	9	1	2		

	<u>Breadth (mm)</u>						
	0	10	20	30	40	50	60+
all flakes		29	49	30	13	3	
		23.4%	39.5%	24.2%	10.5%	2.4%	
primary flakes		3	5	2	2	1	
secondary flakes		16	31	21	7	2	
tertiary flakes		10	13	7	4		

	<u>Breadth:length</u>										
	0:5	1:5	2:5	3:5	4:5	5:5	6:5	7:5	8:5	9:5	10:5+
all flakes	2	5	16	37	26	15	6	8	7	1	1
	1.6%	4%	12.9%	30%	21%	12.1%	4.8%	6.5%	5.6%	0.8%	0.8%
primary flakes			1	5	3	1	2	1			
secondary flakes	2	3	12	22	18	10	3	4	1	1	1
tertiary flakes		2	3	10	5	4	1	3	6		

Table 6 (microfiche). Dimensions and proportions of complete, unretouched flakes from 5m square 230520

5m square 230520: 89 complete, unretouched flakes over 10mm long from non-prehistoric contexts

3 primary flakes (3.4%), 52 secondary flakes (58.4%), 34 tertiary flakes (38.2%), 18 flakes with faceted butts (20.2%)

	<u>Length(mm)</u>					
	10	20	30	40	50	60+
all flakes	10 11.2%	27 30.3%	27 30.3%	15 16.9%	7 7.9%	3 3.4%
primary flakes		3				
secondary flakes	3	12	17	10	7	3
tertiary flakes	7	12	10	5		

	<u>Breadth(mm)</u>					
	0	10	20	30	40	50
all flakes	1 1.1%	21 23.6%	37 41.6%	21 23.6%	7 7.9%	2 2.2%
primary flakes			2	1		
secondary flakes	1	10	21	15	4	1
tertiary flakes		11	14	5	3	1

	<u>Breadth:length</u>										
	0:5	1:5	2:5	3:5	4:5	5:5	6:5	7:5	8:5	9:5	10:5+
all flakes		2 2.2%	19 21.4%	18 20.2%	30 33.7%	13 14.6%	4 4.5%	3 3.4%			
primary flakes				1	1	1					
secondary flakes		2	15	11	16	4	2	2			
tertiary flakes			4	6	13	8	2	1			

Table 7 (microfiche). Descriptive categories used for retouched pieces, listed in the order in which they occur in Table 1.

Chisel arrowhead (F1, F20, F21, F22)

A roughly symmetrical transverse arrowhead of quadrangular or triangular outline, bifacially retouched and retaining an unworked primary flake edge. Equivalent to forms B to D of Clark's (1934) petit tranchet derivative arrowhead classification (adapted from Green 1980,30).

Flake scraper

A flake part of the edge of which is bevelled by unifacial blunting retouch, forming an angle of approximately 20° to 90° with the flat underside of the blank, the modified edge generally being convex (adapted from Saville 1981,8 - 9). Includes:

End scraper (F3, F13)

A scraper worked at the distal or bulbar end of a flake

Side-end scraper (F4, F14)

A scraper worked at the distal or bulbar end of a flake and along more than half of one lateral edge.

Horseshoe scraper

A scraper worked at the distal or bulbar end of a flake and along both lateral edges, or, more rarely, at both distal and bulbar ends and along one lateral edge.

Disc scraper

A scraper worked around the entire circumference of a flake

Scraper on broken flake.

Other scraper

A scraper made on a blank other than a flake. Includes:

Scraper on thermally fractured blank (F5)

Scraper on fragment of irregular waste

Borer or point

An implement with a narrow retouched projection, apparently used for perforation. Includes:

Awl

A borer or point formed by the removal of secondary flakes from more than one direction (Clark, Higgs and Longworth 1960,223)

Piercer (F6, F15)

A borer or point formed by the removal of secondary flakes from only one direction (Clark, Higgs and Longworth 1960,223)

Spurred piece

A piercer with a short projection formed either on a scraper-like edge or by the working of two closely-spaced notches (Smith 1965,105).

Straight-edged flake knife (F23)

A flake with regular, sometimes scale-flaked, flat retouch along one or

two straight edges.

Backed knife (F16)

An approximately parallel-sided flake or similarly thin blank, one long edge of which is blunted by abrupt or semi-abrupt retouch, the opposite edge being either unretouched, although often worn, or modified by uni- or bifacial flat retouch.

Notch (F17)

A piece in the edge of which one or more indentations have been worked by abrupt or semi-abrupt retouch.

Denticulate

A piece at least one edge of which has coarse teeth formed sometimes by the working of contiguous notches, sometimes by the detachment of single flakes.

Saw

A coarsely serrated piece, its teeth often formed by the removal of two or more small flakes on either side (Smith 1965,108).

Serrated piece (right edge of F3, F18, F24)

A finely serrated piece, generally made on a blade, its teeth formed by the removal of a single chip on either side (Smith 1965,91).

Miscellaneous retouched piece

'Fabricator' (F25)

A uni- or bi-facially flaked, blunt-ended, parallel-sided implement, of plano-convex or biconvex section, sometimes heavily worn at its ends and occasionally along its sides.

Axe or adze (S1)

A relatively heavy cutting tool of symmetrical or asymmetrical section with a transverse cutting edge, sometimes wholly or partly ground.

B	C	D	Unifacial	Frag- mentary
-	2	4	2	4
Drawings	F1	F20, F21	F2	F22

All but F1 and F2 were found in non-prehistoric contexts.

Arrowheads are classified according to the scheme of Clark (1934), with the addition of unifacial, to denote unifacially flaked pieces otherwise similar to chisel arrowheads.

Table 8 (microfiche). Chisel arrowhead typology.

Table 9 (microfiche). Scraper typology

	End scrapers	Side-end scrapers	Horseshoe scrapers	Disc scrapers	Scrapers on broken flakes	Scrapers on thermally fractured blanks	Scraper on fragments of irregular waste	Drawings
<u>Prehistoric pit groups</u>								
contexts 318,319,327, 338	2	2				2		F3,F4,F5
contexts 789,794,823	3	3			1	1		F13,F14
<u>Other contexts</u>								
in 5m square 215515	2	1			1			
in 5m square 230520					1			
remainder	17	5	2	2	4	6	1	
totals for excavated area	24	11	2	2	7	9	1	
Drawings	F3 F13	F4 F14				F5		

Table 10 (microfiche)

Site 6033: dimensions of complete flake scrapers (total 33)

	<u>Length (mm)</u>								<u>totals</u>	
	0	10	20	30	40	50	60	70		80
contexts 318,319, 327,338							1	1		2
contexts 789,794, 823				1	2	2				5
5m square 215515						1	1	1		3
remainder			2	9	6	6				23
totals			2	10	8	9	2	2		33

	<u>Breadth (mm)</u>									
	0	10	20	30	40	50	60		70	
contexts 318,319, 327,338			1	1						2
contexts 789,794, 823				2	3					5
5m square 215515			1	2						3
remainder		1	8	8	4	1	1			23
totals		1	10	13	7	1	1			33

	<u>Thickness (mm)</u>												
	1	3	5	7	9	11	13	15	17	19	21 +		
contexts 318,319, 327,338				1	1								2
contexts 789,794, 823				1		2	1	1					5
5m square 215515					2			1					3
remainder			4	6	7	2	2			1	1		23
totals			4	8	10	4	3	2		1	1		33