

Figure 5.3 Period 2.1: Plan of Ditch 3: ?Castle Fee ditch (Area 8), showing the position of machine-stepped sections. Scale 1:250.

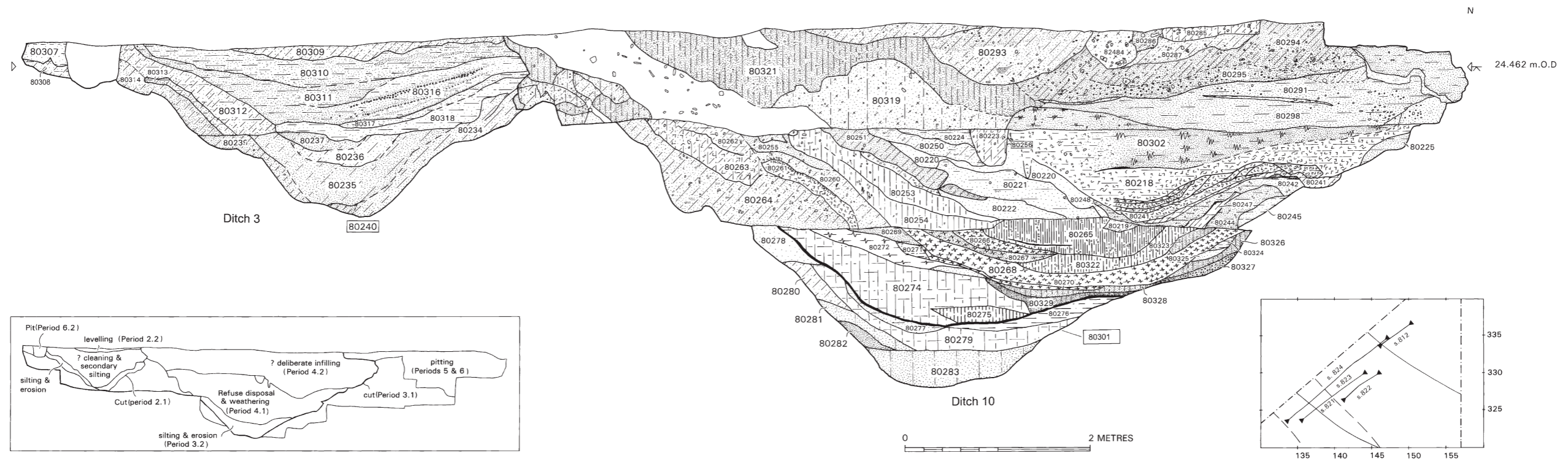


Figure 5.4 Period 2.1: Composite south-east facing section showing the intersection of Ditch 3 (?Castle Fee ditch, Period 2.1) and Ditch 10 (south bailey ditch, Period 3.1) (Area 8). Scale 1:50

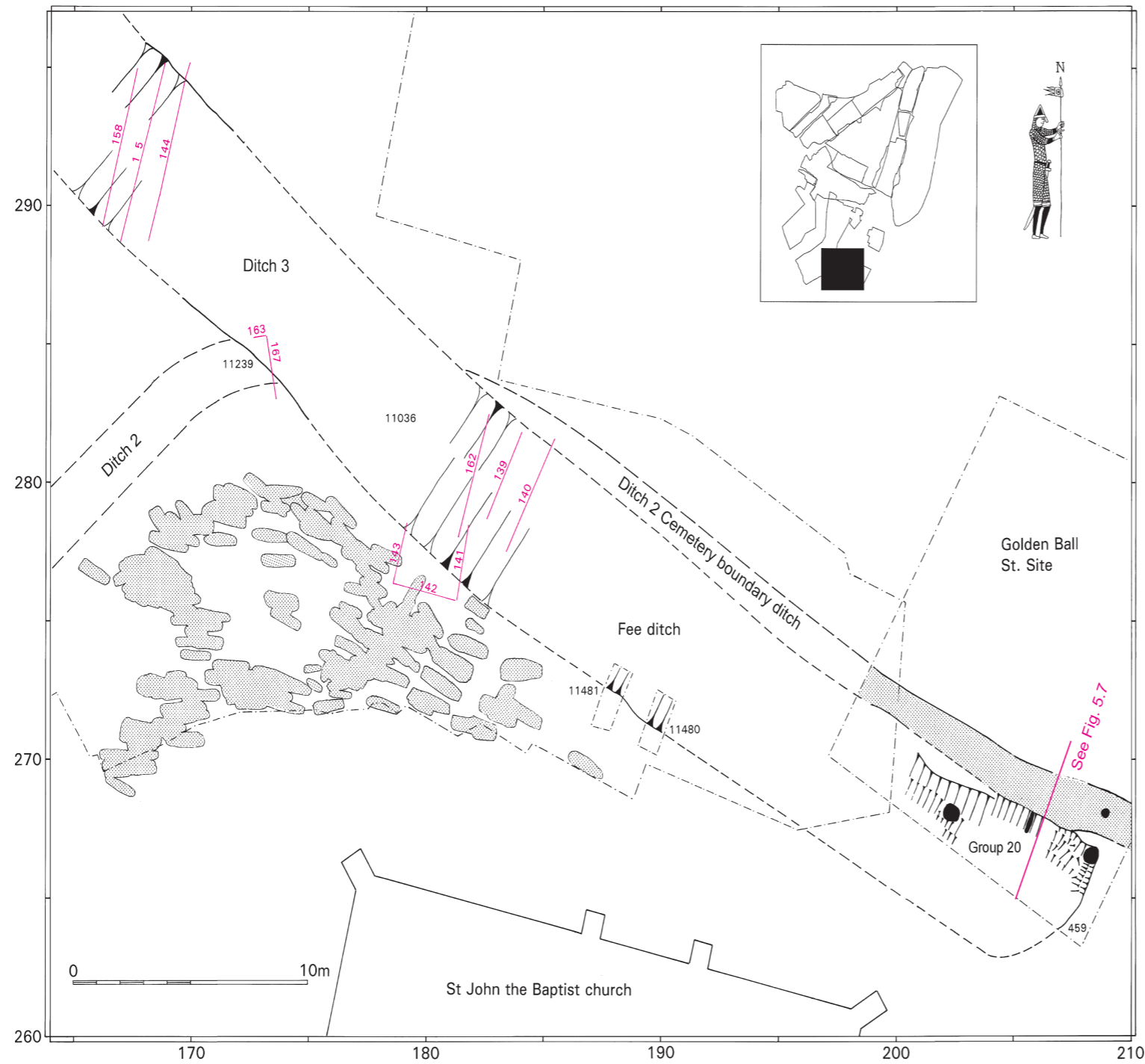


Figure 5.5 Period 2.1: Plan of Ditch 3 (?Castle Fee ditch) at Castle Mall (Area 1) and Golden Ball Street (Area 2), showing the insertion of secondary posts at the ditch terminus and the impact on the pre-existing boundary ditch (Ditch 2) of the cemetery of St John. Scale 1:250



Plate 5.1 The ?Castle Fee ditch (Ditch 3) at its junction with the later south bailey ditch (Ditch 10) (Area 8), looking west



Plate 5.2 Basal fills of the ?Castle Fee ditch (Ditch 3), (Area 1, north-facing S.162)