

Figure 7.15 Period 4.2: Composite east-facing section across Ditch 13 (barbican) and quarry to its north (Area 4). See Fig. 7.14 for location. Scale 1:75



Plate 7.10 Profile of the barbican ditch in Area 9, looking north (Ditch 13, Period 4.2). The ditch survived to well over 20m wide and 10m deep. The majority of the infilling was of post-medieval date.

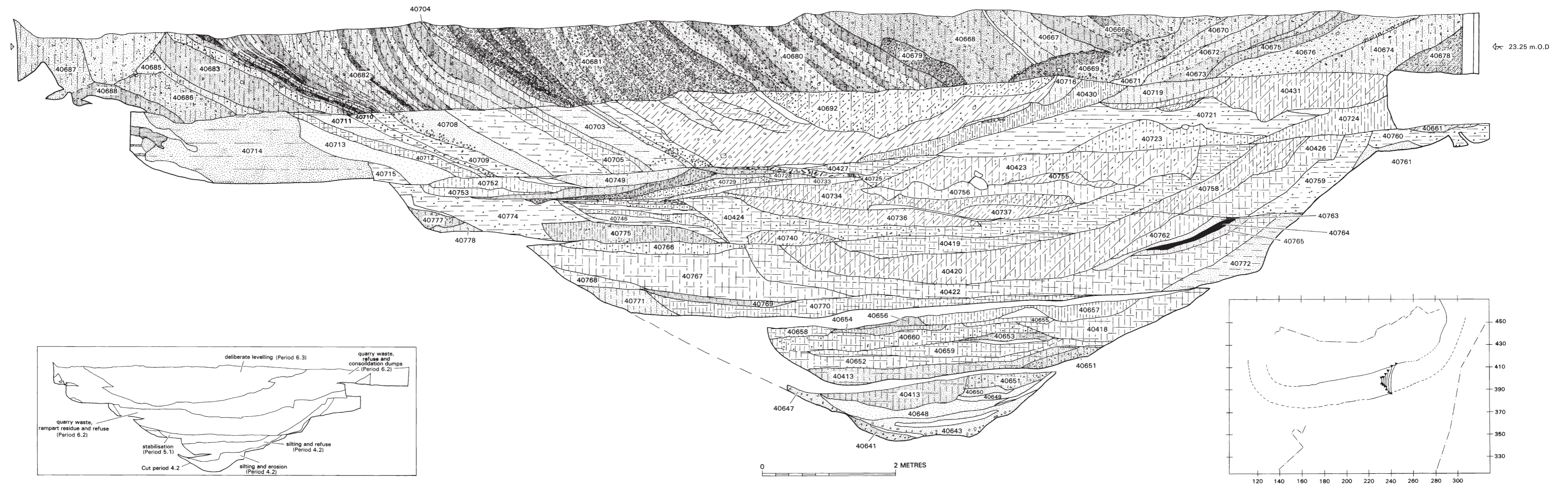


Figure 7.16 Period 4.2: Composite west-facing section across Ditch 13 (barbican) (Area 4). See Fig. 7.14 for location.  
Scale 1:50