

**Data Structure Report and Costed Post-Excavation Research Design:
Watching brief and archaeological excavation, Duntanlich mine,
Logierait, Perth and Kinross**

Prepared by Clare Ellis, Argyll Archaeology

January 2020

Client: SLR Consulting Ltd.

Planning No.: 15/01972/FLL

OASIS ID: argyllar1-434113



0. NON TECHNICAL SUMMARY

0.1 A watching brief was undertaken on the southernmost portion of the construction of a new road associated with Duntanlich mine, Perthshire. The watching brief was followed by open area excavation of the archaeological features as revealed (Fig.1). The archaeological features comprised: a series of ditches; a cluster of parallel aligned postholes; the remnants of a roundhouse with a possibly associated firepit; part of a possible second roundhouse; an isolated hearth; and a buried soil with an associated stone stance. An assessment was made of 15% of the bulk samples (6 samples) and three radiocarbon dates were also obtained. The assessment has revealed that the suite of parallel postholes are likely to date to the early historic/pictish period and at least one of the postholes contained a small amount of carbonised oats and barley as well as fragments of hazelnut shell. The suite of postholes occurred in a series of parallel lines and it is possible that these are the remains of a large timber hall or the remains of number of smaller timber buildings. The assessment phase also revealed that the buried soil and the associated stone stance similarly date from the early historic/pictish period. However, not all the features excavated are of this date; a large firepit possibly associated with a circle of postholes and which was fuelled by oak and hazel returned an iron age date. A hearth, currently undated, and which was located just to the north of the firepit also yielded oak and hazel charcoal. A posthole associated with a second possible roundhouse contained a mixture of wood species indicating that its fill was derived from domestic hearth ash. Finally, the upper fill of a ditch located to the southeast of the suite of postholes contained oak charcoal, while the main ditch with Area 1 yielded two pieces of struck flint. However, all the excavated ditches currently remain undated.

0.2 In summary the results of the excavation and the assessment phase has revealed an iron age (3rd to 4th century BC) firepit and possibly associated hearth and roundhouse(s). In 7th or early 8th century AD a probable timber structure or structures were located downslope of a buried soil to which domestic refuse had been added presumably to increase soil fertility. It is thought likely that the ditches also date to the early historic/pictish period but this remains to be proven.

1. INTRODUCTION

1.1 The site lies within Perth and Kinross Council Administrative Area. The proposed scheme is roughly centred on NGR.: NN97253 52200. A large scheduled area (SM 9525) lies immediately to the south and west of the development area (Fig. 1). The archaeology within the scheduled area is described in Canmore as:

'The monuments comprise a fort, souterrains, roundhouses, pits and an enclosure of prehistoric date, visible as cropmarks on oblique aerial photographs. The monuments lie in arable farmland on a promontory overlooking the Rivers Tay and Tummel, at between 70-100m O.D.

The fort measures at least 50m by 28m and is defined to the north by a double set of ditches; the southern half of the fort is obscured by trees. The exterior

ditches of the fort intersect one small ring-ditch, and a further arc of ditch. Within the northern interior of the fort at least three palisade lines and a ring-ditch roundhouse, measuring approximately 10m in diameter, are visible.

Approximately 50m to the N of the fort further cropmarks indicate the remains of a souterrain, round-house and pits.

Approximately 80m to the NE of the fort a further two roundhouses, measuring c. 20m in diameter are present.

Approximately 90m to the N of Claisandear farmstead cropmarks indicate the location of a souterrain measuring c. 8m long, and two dark sub-circular cropmarks reveal the positions of at least two roundhouses.

In addition, a linear cropmark is visible immediately to the N of these structures and most likely represents part of a rectilinear enclosure. Immediately NE of Logierait cemetery cropmarks reveal the remains of a timber roundhouse with an attached souterrain, and an adjacent crescent-shaped cropmark reveals the presence of a second roundhouse. Immediately NE of this grouping is a dense concentration of pits and a rectilinear enclosure'.

2. OBJECTIVES

2.1 The archaeological objectives were:

- a. to monitor the stripping of the topsoil and overburden over previously specified areas (the southernmost area was expanded during stripping works)
- b. to excavate, according to the methodology outline in the WSI, archaeological features revealed

3. METHOD

3.1 The fieldwork was carried out according the *Written Scheme of Investigation* produced by SLR Consulting Ltd (2018).

3.2 Tracked excavators, each equipped with a large ditching bucket were used to strip the three areas identified in the WSI as areas of archaeological sensitivity (Fig. 2). Soil was banded at the sides of the stripped areas. No stripped areas were tracked over prior to being deemed free of archaeological features. All topsoil and where appropriate subsoil stripping in the areas of archaeological sensitivity was carried out in the presence of an archaeologist. No backfilling was undertaken.

Watching brief and archaeological excavation, Duntanlich, Perthshire - 524

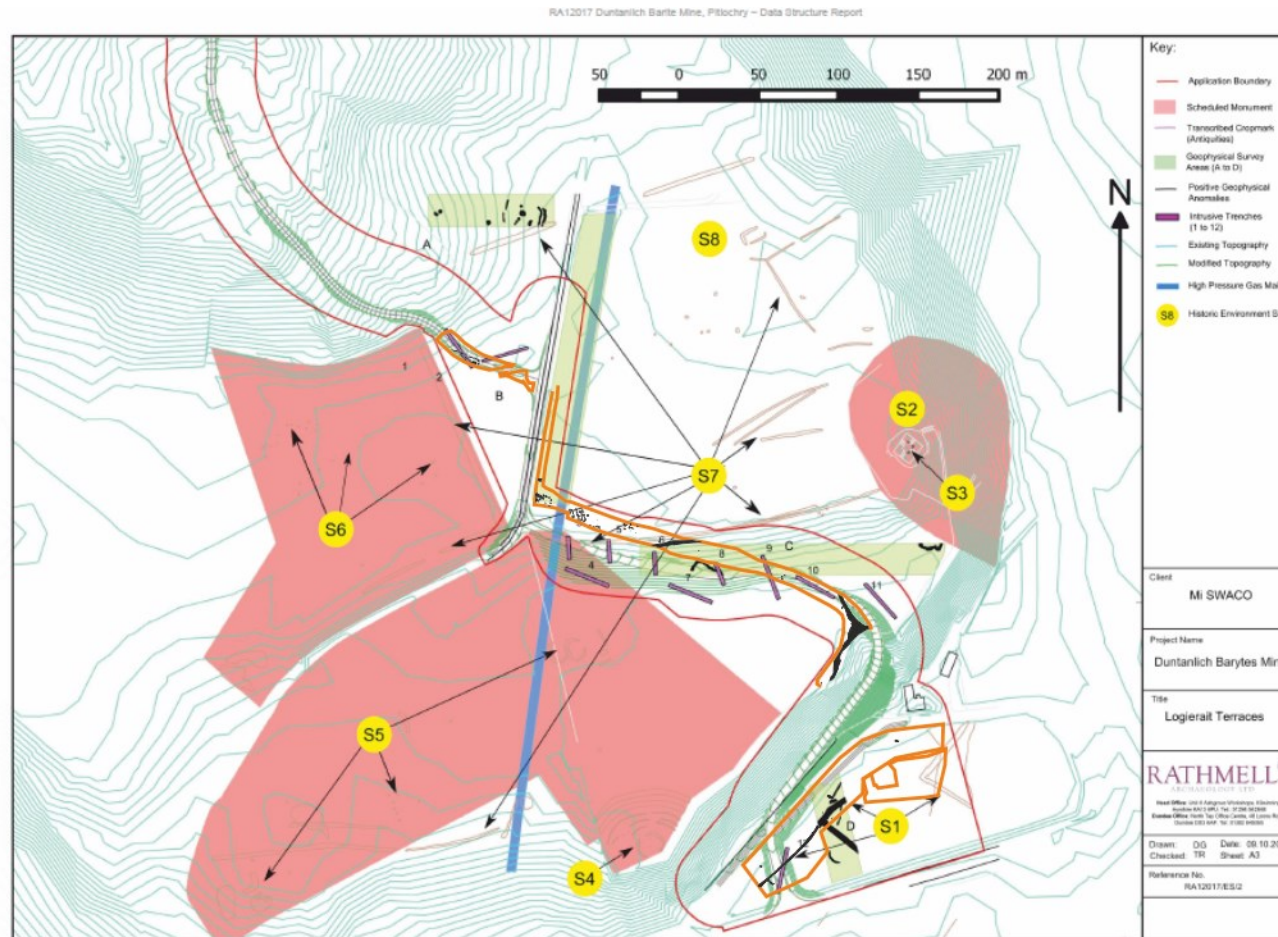


Fig. 1. Plan showing the areas subject to the watching brief (outlined in orange), the scheduled areas (pink), the mapped cropmarks S1 to S7 (Rathmell's trial trenches, 2015, are also shown).

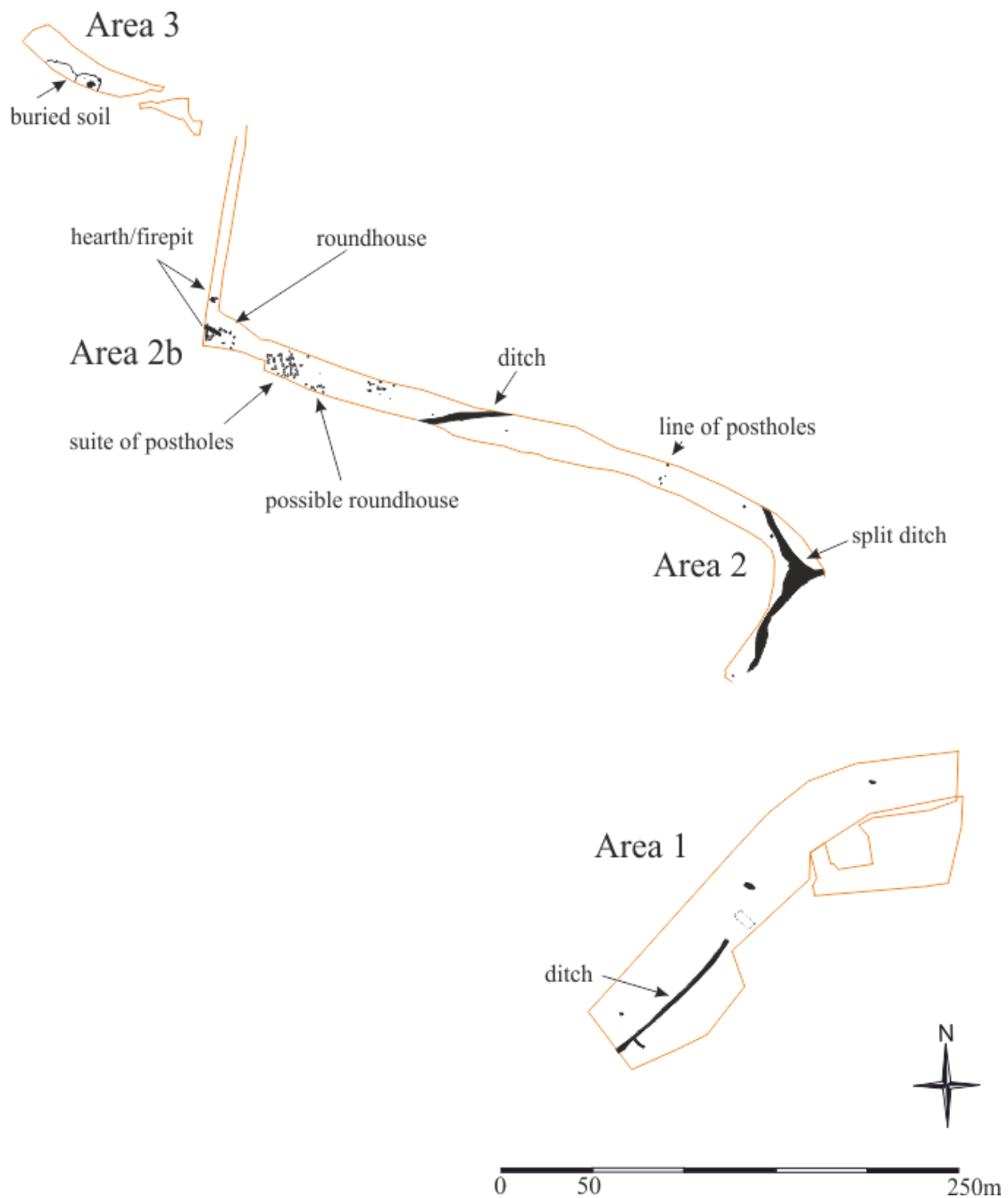


Fig. 2. Plan showing Areas 1 to 3 subject to the watching brief and archaeological features (in black) as excavated.

4.0 RESULTS

4.1 Topsoil strip

4.1.1 The topsoil was stripped by machine in the areas shown in Fig. 2. The topsoil was roughly 0.35-0.40m deep and comprised dark reddish brown silt loam. The topsoil capped a mixture of unconsolidated sediments including silt, sand and sandy gravel.

4.2 Excavation

4.2.1 Significant archaeological features and deposits were excavated in three distinct areas, Area 1 located next to the A827 on the south side of the site, Area 2 located on the terrace to the north of the A827 and Area 3, located on the north side of the minor road (Fig. 2).

4.2.2 Area 1

4.2.2.1 A relatively narrow (up to 1.0m wide) slightly curvilinear ditch [007]/[017]/[021] ran northeast/southwest (Fig. 3 & Plate 1). The northern side of the ditch was gently sloping while the southern side was more steeply sloping; the ditch had a narrow slightly rounded base. The lower fill (006) comprised a brown silt with pebbles/cobbles and occasional flecks of charcoal while the upper (005) was more sand rich with less gravel content. At the western end the upper ditch fill (022) contained a significant quantity of charcoal and two pieces of struck flint were also recovered elsewhere discrete dumps of charcoal were evident (019). A very shallow ditch [014] ran in a north/south orientation into [007] and was filled with a brown silty sand (013) very similar to (005). A circular pit [004] lay on the northern side of the ditch and contained a brown sand silt (003) from which a nail was recovered (Plate 2). Two pits [010] and [012] were recorded on the eastern side of the area. The linear Pit [010] contained a lower fill of charcoal and silt (008) with an upper fill (009) of fire-cracked cobbles; the heat reddened natural indicates that burning was in situ. The other linear pit [012] also contained fire-cracked pebbles, although the natural had not been heat affected and so it is unclear whether the fill is the result of insitu burning or a dump of hearth residue.

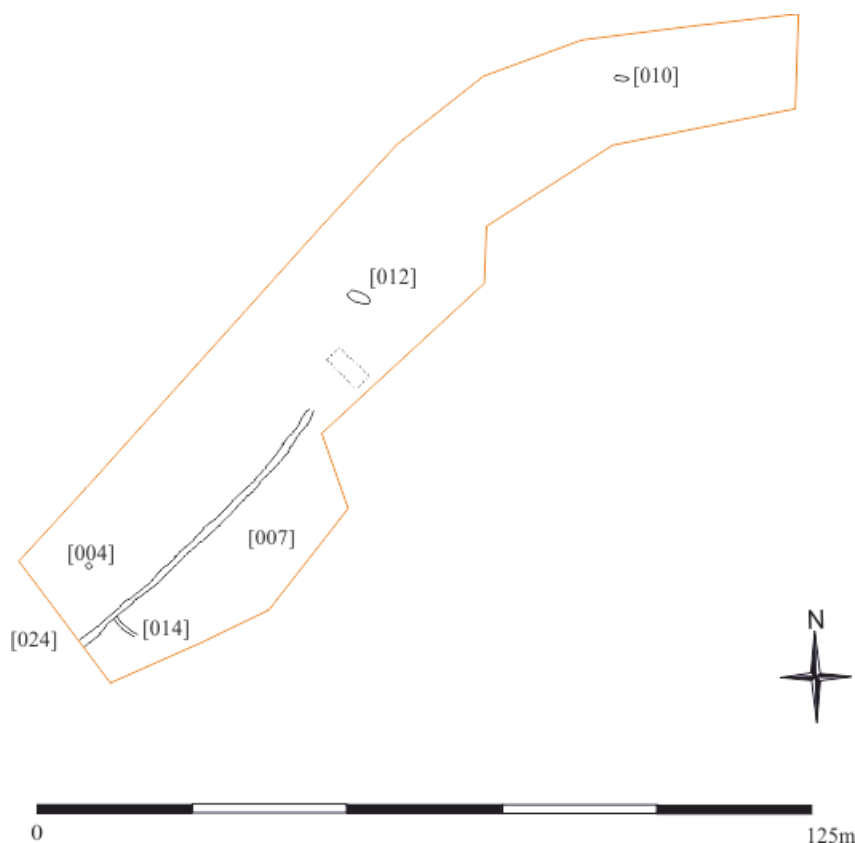


Fig. 3. Plan of Area 1 showing the ditches and location of the three pits



Plate 1. Ditch in Area 1.



Plate 2. Pit [004], half section.



Plate 3, Pit [010] half section.

4.2.3 Area 2

4.2.3.1 Area 2 was located on the terrace overlooking the confluence of Tummel and Tay (Fig. 2). A narrow ditch [212] ran NE/SW along the edge of the terrace and was filled with a red/brown silt loam (213) (Plate 4). In the far southwestern corner just to the north of the ditch was an isolated pit [214] filled with charcoal and burnt bone (Fig. 4). The terrace edge ditch merged with a broad linear ditch [033] which ran down slope from the north and which then split into two just before the edge of the terrace with one limb running westward and the other eastward. Ditch [033] was around 1.80m wide and 0.40m deep with a broad concave base (Plate 5). The lower fill (035) comprised re-deposited ditch upcast (sand and gravel) and the upper fill (034) a sand loam mixed with pebbles and small amounts of oak charcoal. On the southwest side of ditch [033] were two isolated pits filled with dark reddish brown silt. A third ditch [216] was located on the steep slope of the upper terrace running in a NE/SW direction (Fig. 5 & Plate 6). The lower fill (220) comprised a brown sand loam and the upper fill (219) a brown sand loam with fire-cracked stones, charcoal and sheep teeth. This ditch roughly coincides with a ditch visible on the aerial photographs (Fig. 1). There was no evidence of any banks associated with the ditches.



Plate 4. Ditch [212] prior to excavation, located on the edge of the steep terrace.



Plate 5. Ditch [033], Slot 2, looking north.

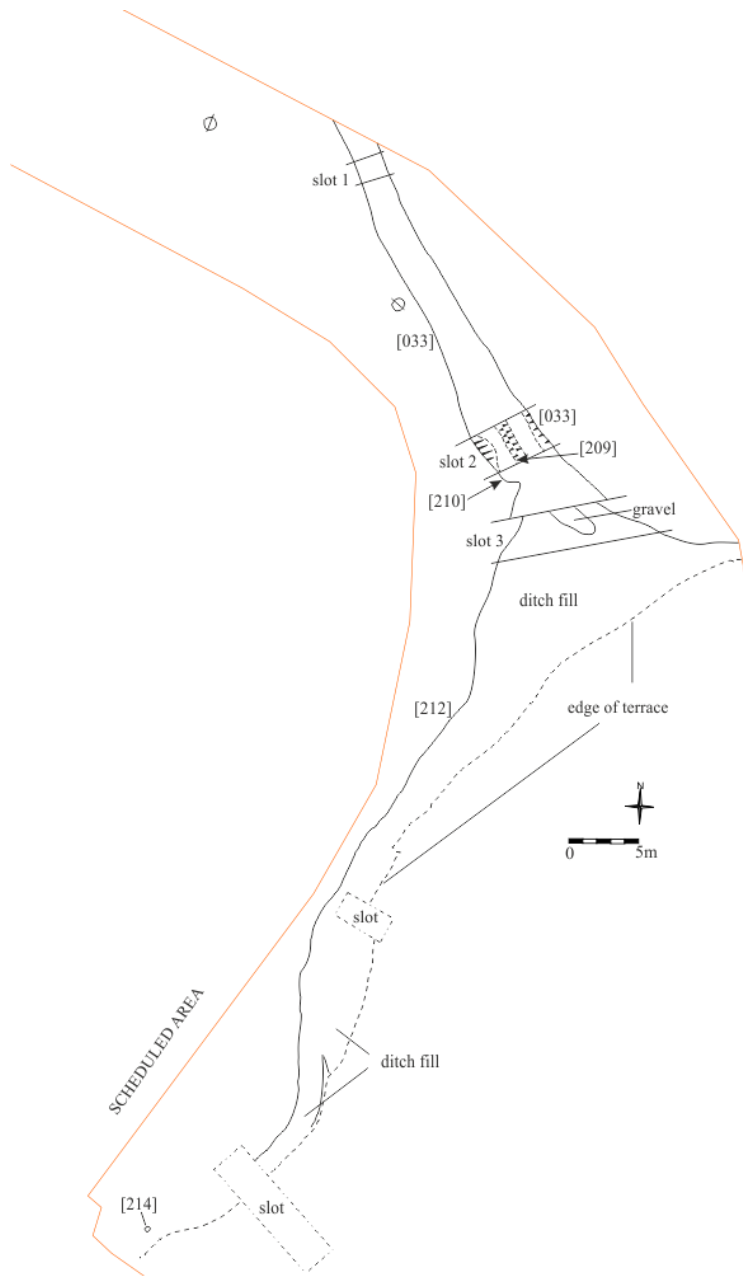


Fig. 4. Plan of ditches located at the top of the terrace.

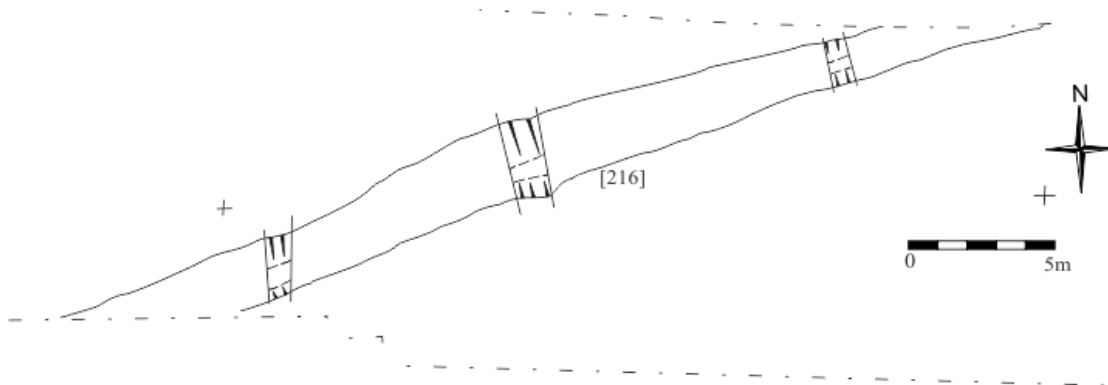


Fig. 5. Plan of upper terrace ditch.



Plate 6. Ditch [216], looking west.

4.2.3.2 An irregular line of four probable postholes ran N/S at the base of the steep slope leading up to the upper terrace (Fig. 6). The fills comprised greyish brown silt loam with odd flecks of charcoal.

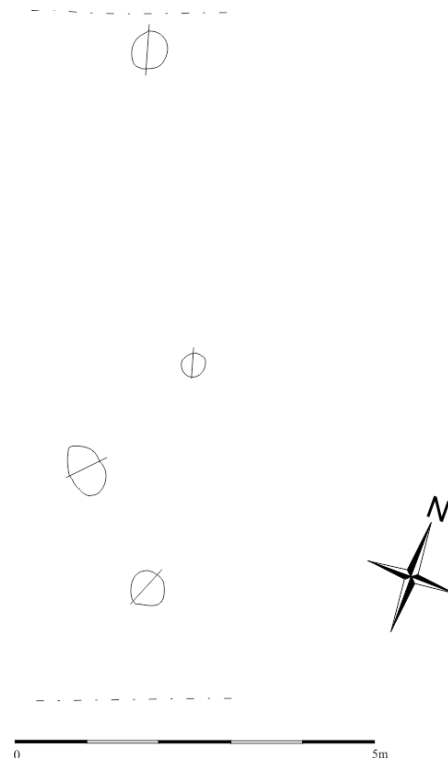


Fig. 6. Irregular line of postholes.

4.2.3.3 On the flat upper terrace a suite of postholes was excavated (Fig. 2). The postholes occurred in roughly parallel near straight lines, some were quite shallow (less than 0.20m), and others were much deeper (up to 0.60m) (Fig. 7 & Plate 7). Many of the postholes contained undisturbed stone packing indicating that these had held timbers that had rotted in situ. However, many of the postholes also had charcoal rich silt fills. The assessment of one [041]/(042) revealed it contained a few carbonised barley and oats, small fragments of burnt bone and a small amount of slag, indicating that this material must of trickled into the postholes from an overlying rich occupation layer and/or conflagration layer; this layer has not survived subsequent ploughing. Two possible whetstones (SF. 16 & SF.18) were recovered from postholes [118] and [149]. A single piece of decorated medieval pottery (SF.4) and a sherd of white gritty ware (SF.3) was recovered from the base of the topsoil which capped the postholes.

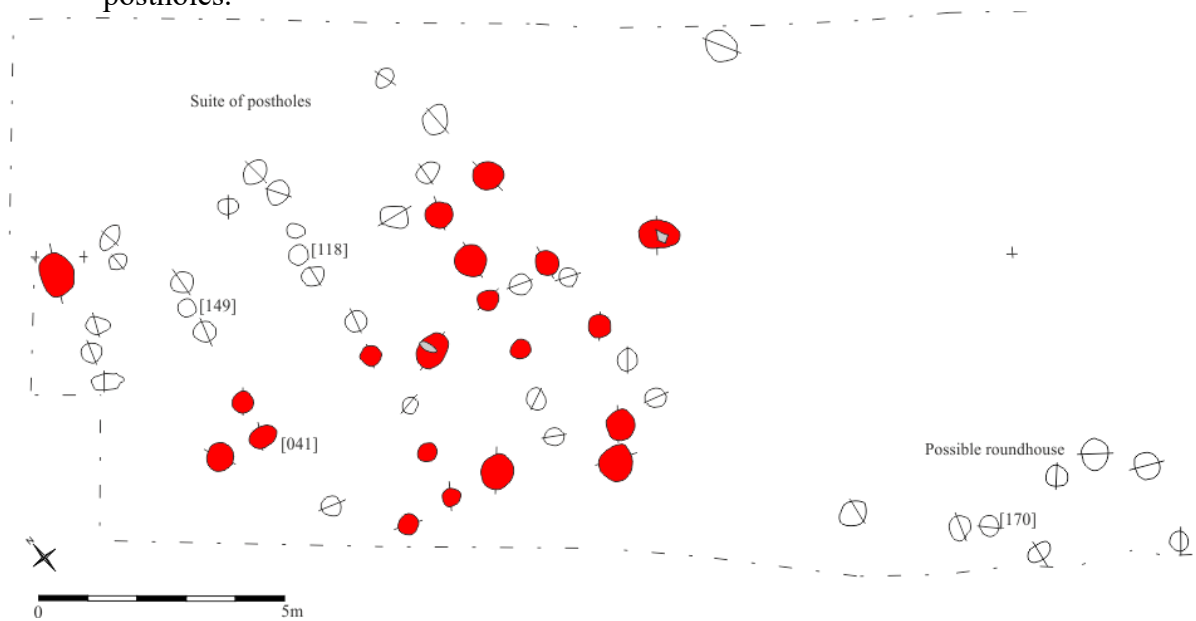


Fig. 7. Suite of postholes (the red postholes are exceptionally deep) and possible roundhouse.



Plate 7. Suite of postholes, half sectioned.

4.2.3.4 Just to the east of the suite of postholes was a smaller cluster of postholes that appeared to be part of a circle (Fig. 7). The brown silt with charcoal fill (171) yielded a mixed species of charcoal, again indicating that it is infilled with occupation debris. Beyond these to the east were a few more random postholes [184] etc. and two modern pits [193]/[194] (Fig .8).

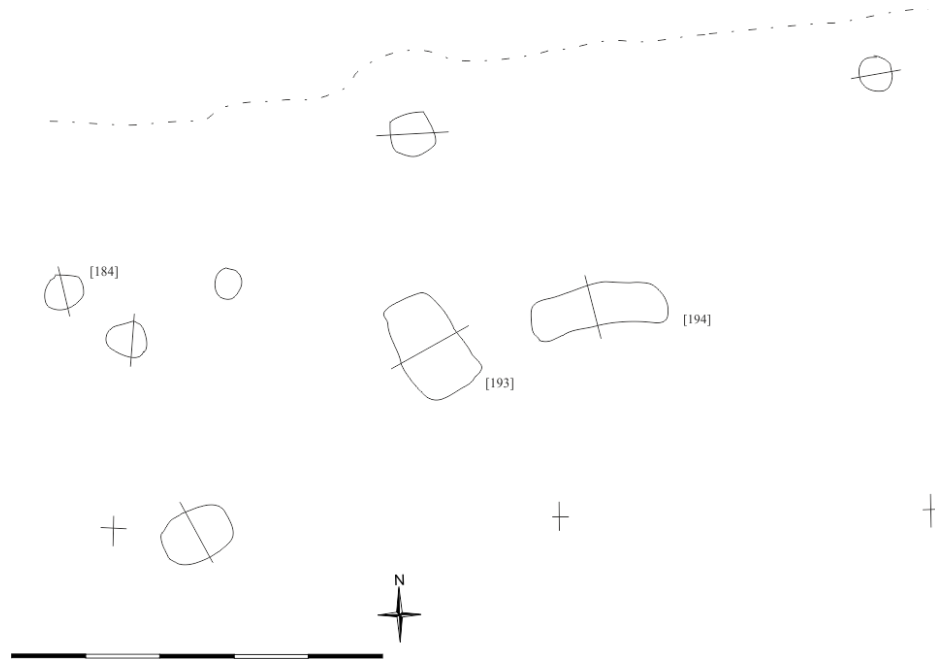


Fig. 8. Postholes and two modern pits.

4.2.3.5 A circle of postholes with a possible near central firepit/hearth [157] was located at the western end of Area 2 (Fig. 2). The postholes had largely charcoal free sand and gravel rich fills but the firepit/hearth contained sand rich in charcoal and red ash (158) and from which a number of nodules of slag were recovered (Fig. 9). A large pit [082] lay just on the edge of the circle and contained a lower fill of charcoal and red ash (111), a middle fill of sand and charcoal (hazel and oak) (110) and an upper fill of brown sand and charcoal (083). Small amounts of slag were observed in (110). Just to the north was a hearth-like feature [044], with two centrally placed stones overlain by a sand rich in charcoal (045) and which was also fired by hazel and oak. This hearth was associated with two postholes and is likely to be part of a larger structure.

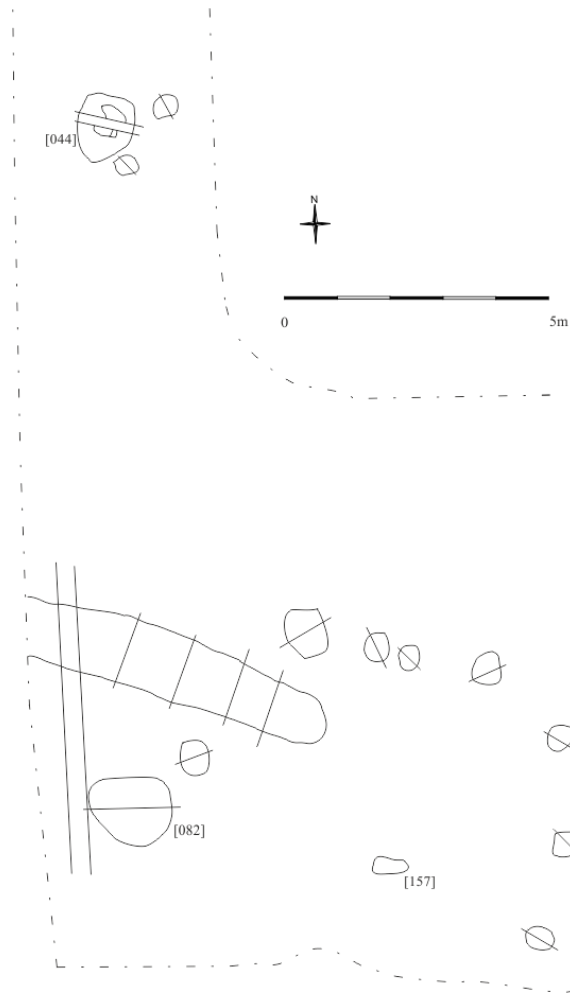


Fig. 9. Probable roundhouse and internal hearth [157], firepit [082] and hearth [044].

4.2.3.6 A thin buried soil (040)/(038) on the north-western side of minor road was recorded under 1m of silt colluvium (Fig. 10). The buried sandy silt soil contained small patches of charcoal, red ash and burnt bone and the odd iron nail. Set within this was an arrangement of 14 flat stones (039) forming a rhomboid shape (Plate 8); the stones occurred in a narrow scoop cut into the natural sand.

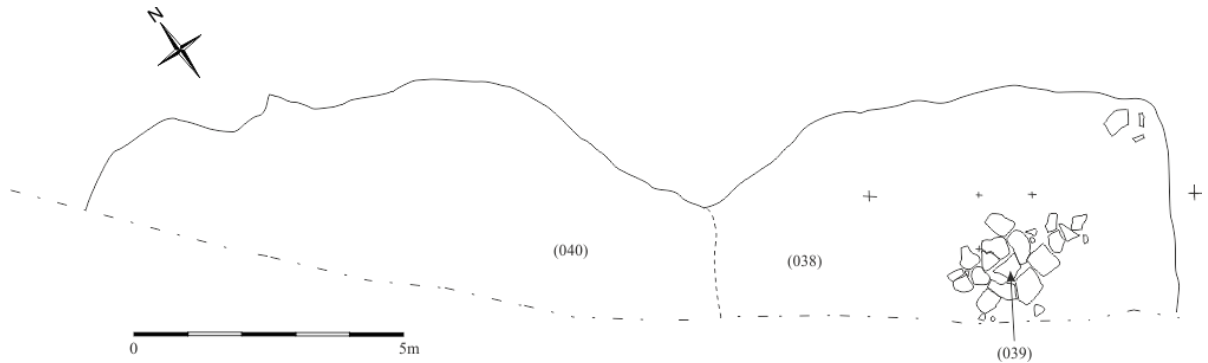


Fig. 10. Plan of buried soil and stone stance.



Plate 8. Stone stance (039).

4.3 Preliminary conclusions

- 4.3.1 The topsoil strip of all three areas revealed a significant quantity of archaeological features. A 15% assessment of the bulk samples (6 samples in all) was also undertaken to inform the proposed costed post-excavation research design.
- 4.3.2 Three radiocarbon dates were obtained from three of the key features (Table 1). The first date, SUERC-91103, places the addition of midden/hearth waste to the soil (040) in the late 8th or 9th century AD; hearth ash etc. was presumably added to increase soil fertility. The rhomboid of stones (039) lay surrounded by the buried soil and was located below over 1m of colluvium and therefore is also likely to date from this period; one interpretation of the stone stance is as a corn stook. The second date, SUERC-91104, was derived from the charcoal rich fill of posthole [041], a large posthole within the complex suite of postholes. The date indicates that the occupation debris is derived from 7th or 8th century AD activity and this would suggest that the structure or structure represented by the suite of postholes date from the early medieval/pictish period. Given the minimal number of radiocarbon dates so far retrieved from the buried soil and the suite of postholes it is not possible to determine whether the buried soil and postholes structure(s) are contemporary/near contemporary or not. Although the series of linear ditches remain undated it is thought more likely, given their probable non-defensive nature, that these date from the pictish period or later and may be part of a broader field system.

Sample	Material	Context	Description	Depositional context	Uncal	Calibrated 1-sigma	Calibrate 2-sigma	Delta-13C%
SUERC - 91103	Charcoal	40	Betula sp.	Buried soil	1189±24	778-793calAD (11.9%) 801-846 calAD (35.2%) 852-879 calAD (21.2%)	769-894 calAD (94.4) 931-938 calAD (1.0%)	-26.8
SUERC - 91104	Charcoal	42	Alnus glutinosa	Posthole fill	1295±24	673-711 calAD (44.1%) 745-764 calAD (24.1%)	664-726 calAD (62%), 738-769 calAD (33.1%)	-28
SUERC - 91105	Charcoal	110	Corylus cf avellana	Firepit	2211±22	358-349 calBC (6.5%) 316-280 calBC (26.4%) 257-208 calBC (35.3%)	362-203 calBC (95.4%)	-26.8

Table 1. Radiocarbon dates

4.3.3 The third radiocarbon date SUERC-91105 was obtained from a fire-pit possibly associated with a roundhouse. The fire-pit was in use in the 3rd or 4th century BC and is therefore Iron Age in date. The recovery of slag from Pit [157] indicates that metalworking may have been taking place within this structure. It seems likely that the nearby hearth [044] and the other part circle of postholes (eg. [170]) may also date to the Iron Age.

5.0 POST-EXCAVATION RESEARCH DESIGN

5.1 The excavation and initial assessment of features unearthed at Logierait indicates activity from the iron age through to the early historic/pictish period. Although roundhouses have been previously recorded from aerial photography in the immediate locality (SM 9525) these remain undated. The nearest known early historic settlement is the fort known as King's Seat at Dunkeld which has recently seen excavation and is currently in post-excavation by Perth and Kinross Heritage Trust and AOC Archaeology. The site has been interpreted as an important local centre of power within which various high status goods were manufacture and traded during the 7th to 9th centuries AD. Given that the new road at Logierait runs along the eastern boundary of the scheduled area the archaeological features and deposits recorded during the watching brief expand the current known extent of the buried archaeology recorded within the scheduled area and as such should be regarded as of national/regional importance.

The Scottish Archaeological Research Framework (ScARF) identifies numerous key further areas of research in the iron age and medieval periods and some of these may be relevant to the findings from Logierait:

- Exploring the relationship between centres of consumption – royal, ecclesiastical and urban – and their hinterlands (this may be particularly relevant as the logierait timber structure(s) may have been utilised at the same time as the hillfort at King’s seat)
- Attempts to define relict boundaries (these have been recorded at Logierait and classification of their date and/or function will help elucidate these)
- A key aspect for future work is the nature of inter-site difference in terms of domestic animals and crops produced and consumed in different circumstances
- Classification systems for sites especially cropmarks require regular critical review in the light of emerging knowledge (this is particular pertinent to the work at Logierait)

The main site specific research questions pertinent are:

- To what periods do the various structural elements belong?
- What was the duration of their use?
- Can the function of the structures and ditches be determined?
- How do the various structural elements fit into the broader local and regional context?
- Do the results of the post-excavation shed any light upon the nature of cropmarks within the scheduled area?

5.2 In summary the programme of post-excavation will comprise:

1. Processing (wet sieving and flotation) of all the remaining bulk samples
2. Sorting of processed samples for retrieval of charcoal, other carbonized material and any other significant artefact or ecofacts etc.
3. Charcoal and if present plant macroplant identification, production of report and selection of material for radiocarbon dating
4. Submission of up to 12 additional samples for radiocarbon dating
5. Cataloguing of the sherds of pottery and production of a short report
6. Cataloguing of the lithics and production of a short report
7. Analysis of iron object and metal working debris (slag/hammerscale etc) and production of a short report
8. Analysis of coarse stone tools and production of a short report
9. Production of final report
10. Production of summary publication

5.2.1 *Sample processing (Dr Clare Ellis & Dr Susan Ramsay)*

The remaining 36 bulk samples will be subject to flotation and wet sieving. The flot and retent will be air dried and sorted with the retrieval of charcoal, charred macroplant material, animal bone, artefacts/lithics, slag and hammerscale etc. Charcoal from all the bulk samples will be identified and a selection made of suitable material for AMS radiocarbon dating. Charcoal not intended for radiocarbon dating will be identified to species so that an assessment can be made of the type of wood utilized on the site and within the specific features. If present charred macroplant remains will also be identified to species as such material will elucidate the type of food stuffs and/or domestic cereals being consumed. A summary report on the identification of the charcoal and macroplant remains will be produced.

5.2.2 *Radiocarbon dating (Dr Clare Ellis & SUERC)*

Eleven additional AMS dates will be obtained from key deposits on site. The features to be dated are summarised below but these may vary according to the nature and survival of carbonised material once the samples have been processed.

- Suite of postholes fills *2 (fills to be determined and an attempt made to determine whether one or multiple structures exist)
- Possible roundhouse posthole fills (113) or (081)*1
- Hearth [044] / (045)*1
- Possible roundhouse (173) or (179) *1
- Ditch [216] / (218) *1
- Ditch [021] / (019)* 1
- Pit [214] *1
- Pit [012]*1
- Pit [010]*1
- Pit [207] / (206)*1

5.2.3 *Pottery analysis (Derek Hall)*

The very small assemblage of medieval pottery will be described and a catalogue and report produced. Comparison will be made to the pottery assemblages previously recovered from the locality and placed within a broader regional context.

5.2.4 *Lithics (Dr Torben Ballin Smith)*

The very small assemblage of lithics will be described and a catalogue and report produced.

5.2.5 *Metal objects and metal working materials (Dr Gemma Cruickshanks)*

The two nails (and any additional metal object retrieved from the retent) will be catalogued. All slag, collected during the excavation and retrieved from the retent and any hammerscale retrieved from the retent will be catalogued and a short report produced.

5.2.7 *Worked coarse stone (Dr Gemma Cruickshanks)*

The small assemblage of coarse worked stone retrieved during the excavation will be catalogued and a short report produced.

5.2.8 *Dissemination*

A short paper summarising the findings will be published in a suitable peer reviewed publication.

5.2.6 *Post-excavation and Publication*

1. Sample processing
2. Postage of samples etc
3. Charcoal and macroplant analysis and reporting
4. 11 radiocarbon dates

5. Lithic analysis and reporting
6. Medieval pot analysis and reporting
7. Metal and metal working analysis and reporting
8. Coarse stone analysis and reporting

9. Production of final report/publication paper
10. Publication costs
11. *Optional OSL date*

Watching brief and archaeological excavation, Duntanlich, Perthshire - 524

Appendix 1. Context register

Area	Context No.	Context Type	Description	Interpretation	Filled by	Fill of	Above	Below	Cut by
1	1	Layer	Dark grey to brown silty sand loam. Between 0.35m to 0.40m deep	Topsoil					
1	2	Layer	Series of linear plough strikes through the subsoil. All in a similar alignment NE/SW or parallel to the road/track	Recent plough marks					
1	3	Fill	Mottled yellow to mid brown sandy silt. Inclusions of cobbles and pebbles 15%, occasional charcoal, pot, 1 iron nail.	Fill of pit		4			
1	4	Cut	Circular pit 1.19m x 1.16m and up to 0.43m deep, near vertical sides and flattish base	Cut of pit	3				
1	5	Fill	Mid brown silty sandy. Inclusions of charcoal, pebbles and stone.	Upper fill of ditch		7	6		
1	6	Fill	Compact mid grey brown silt. Inclusions frequent pebbles and gravel and occasional charcoal.	Lower ditch fill		7		5	
1	7	Cut	Orientated NE/SW ditch, up to 1.80m wide and 0.65m deep. Upper side dips at 30/45 degrees and lower side is steeper, 60-80 degrees, slightly rounded base.	Ditch cut	5, 6				
1	8	Fill	Mainly fire cracked, heat affected stones. Mostly water rounded cobbles, average 0.19m x 0.13m. Stones mostly on one side of the pit.	Upper pit fill		10	9		
1	9	Fill	Mostly dark grey to black silt and charcoal, mixed through with dark brown sand.	Lower pit fill		10		8	
1	10	Cut	Linear NE/SW pit. 2.25m long and 0.50m wide, 0.13m deep. Shallow concave profile, sides of cut fire reddened.	Cut of pit. In situ burning - pit-hearth	8, 9				
1	11	Fill	Mainly fire affected/cracked stones and cobbles (max. size 0.15m x 0.10m x 0.08m) in a dark brown sandy matrix with patches of charcoal and ash.	Fill of pit		12			
1	12	Cut	Linear E/W aligned pit, 2.20m long and up to 0.60m wide and -0.30m deep. Steep, near vertical sides and flattish base.	Cut of pit. Possibly not in situ burning, maybe dump of ashy material.	11				
1	13	Fill	Mid brown silty sandy. Inclusions of charcoal, pebbles and stone.	Fill of ditch		14			
1	14	Cut	Runs up to and into ditch [007] at west measure up to 1m and 0.15m deep, shallow concave profile.	Cut of ditch	13				
1	15	Fill	Mid brown silty sandy. Inclusions of charcoal.	Fill of ditch		17	16		

Watching brief and archaeological excavation, Duntanlich, Perthshire - 524

Area	Context No.	Context Type	Description	Interpretation	Filled by	Fill of	Above	Below	Cut by
1	16	Fill	Compact mid grey brown silty sand and gravel.	Fill of ditch		17		15	
1	17	Cut	1.30m wide and 0.50m deep, upper dies dip up to 30 degrees, steep at lower level 60-70 degrees, slightly concave base.	Cut of ditch	15, 16				
1	18	Fill	Light to mid brown silty sand, includes moderate charcoal fragments.	Fill of ditch		21	19		
1	19	Fill	Discrete dump of charcoal with some burnt bone.	Fill of ditch		21	20	18	
1	20	Fill	Lower fill, light brown sandy silt	Fill of ditch		21		19	
1	21	Cut	0.50m wide and 0.26m deep with steep concave profile.	Cut of ditch	18, 19, 20				
1	22	Fill	Mid brown silty sand, occasional gravel, cobbles, charcoal, flint and quartz	Fill of ditch					
1	23	Fill	Mottled dark grey, brown, yellow, compact sandy silt, with occasional pebbles and charcoal.	Fill of ditch		24			
1	24	Cut	At least 1m wide and 0.32m deep, concave profile.	Cut of ditch	23				
2	25	Cut	Cut of ditch, v-shaped cut into gravel on NE side and SW side, 0.40m deep and 0.90m wide	Cut of ditch	26 -30				
2	26	Fill	Brown silt and gravel, small pebbles and rare flecks of charcoal, re-deposited ditch upcast	Fill of ditch		25		27, 29	
2	27	Fill	Compact yellow brown silt, possible inwash accumulation at base of the ditch over a long period of time	Fill of ditch		25	26	28	
	28	Fill	Thin layer of yellow sand, possible erosional flood event some brown silt too, only 0.03m thick.	Fill of ditch		25	27	30	
2	29	Fill	Larger gravel 0.05m, sme event as (028) with brown silt matrix	Fill of ditch		25	25	30	
2	30	Fill	Brown silt, occasional gravel clast, very clean, very similar to capping colluvium	Fill of ditch		25	29, 27		
2	31	Fill	Buff brown silt, very few small rounded pebbles, slightly more gravel next to the cut	Ditch fill		33			
2	32	Fill	Dark brown silt, possible lower fill	Ditch fill		33			
2	33	Cut	1.80m wide x 0.40m deep. Orientated N/S, looks straight. Broad U-shaped cut, slightly steep on west side.	Cut of ditch	34, 35				

Watching brief and archaeological excavation, Duntanlich, Perthshire - 524

Area	Context No.	Context Type	Description	Interpretation	Filled by	Fill of	Above	Below	Cut by
2	34	Fill	Grey brown fine sand loam, few roots, odd large pebble, average 0.10m diameter and a few smaller. Pebbles 0.02-0.03m diameter. Fill deeper on west side. No charcoal. No finds. 0.28m deep.	Upper ditch fill		33			
2	35	Fill	Dirty re-deposited ditch upcast. Frequent small pebbles and gritty fine sandy loam and odd large pebbles up to 0.08m diameter. 0.20m deep.	Lower ditch fill		33			
2	36	Cut	0.73m x 0.74m x 0.20m deep. Very steep sides and near flat base.	Cut of pit/posthole	37				
2	37	Fill	Greyish brown fine sand loam, roots and small pebbles. Pebbles concentrated towards base, but not different context	Fill of pit/posthole		36			
3	38	Layer	Mixed fine orange sand and brown silt/sand and discrete small patches of charcoal with odd fragments of burnt bone. Few small patches of red, ash-like material, very few small stones 0.10-0.25m diameter. Nail?	Soil with midden -like material within it.					
3	39	Layer	14 flat, deliberately laid stones. Mostly coarse grain schist, pinkish, 1 dark igneous coarse grained rock. Irregular shapes, 0.60-0.55m diameter. Sitting on dirty natural, a yellow fine sand with pockets of brown, fine sand and very few rounded pebbles and very few angular stones. Possible stance for corn stack??	Stone platform/stance					
3	40	Layer	As for (038) but slightly more charcoal and burnt bone content. Few small stones. Located 1m below colluvium (brown silt with few small stones) and 0.30m of topsoil, dark brown silt loam. Runs from west baulk edge of the road line for 2.70m, irregular east edge, overlies natural gravel and fine orange/yellow sand. 1 burnt finger bone. No pottery	Buried soil. Spread of hearth waste, midden layer.					
2	41	Cut	0.55m E/W x 0.72m x 0.60m deep. Vertical side on E and slightly stepped 0.20m on S side. And undercut on W side. Flat base, plug of natural on E side. Possibly too rocky so moved W slightly.	Cut of posthole	42, 43				
2	42	Fill	Dark brown silt loam, small pebbles, common charcoal. Few roots, 0.25m deep.	Upper posthole fill		41			
2	43	Fill	Lower fill, black charcoal rich silt, located near base is reddish ash lenses, 0.35m deep.	Lower posthole fill		41			
2	44	Cut	Teardrop shaped in plan 1.35m N/S x 1.10m E/W. Concave profile in E. Max depth 0.34m.	Cut of hearth	45, 46, 47				

Watching brief and archaeological excavation, Duntanlich, Perthshire - 524

Area	Context No.	Context Type	Description	Interpretation	Filled by	Fill of	Above	Below	Cut by
	45	Fill	Charcoal and ash rich sand immediately overlying stones (047). This layer is 0.1m wide.	Upper fill of hearth		44	46		
	46	Fill	Light to mid brown coarse sand with very frequent rounded gravel and small pebbles. No charcoal.	Lower fill of hearth		44		45	
	47	Fill	Two large stones immediately below the ash/charcoal rich fill (045), sat on the surface of the lower fill (046). Schist large flat stone to the E overlies larger squat stone at W. Flat stone nearly horizontal, tilted down to E away from squat stone. Squat stone centrally place in pit. Cluster of small rounded stones underlying and supporting that part of the flat stone not overlying the squat stone.	Hearth stones		44	46		
2	48	Cut	0.43m x 0.53m E/W x 0.35m deep. Steep sided, flat base, cut into gravel	Cut of posthole	49				
2	49	Fill	Dark brown silt loam, flecks of charcoal, pebbles 10% from gravel, fill gritty grey towards base.	Fill of posthole		48			
2	50	Cut	0.29m x 0.45m E/W x 0.27m deep. Near vertical sides and flat base.	Cut of posthole	51				
2	51	Fill	Dark brown silt loam with few flecks of charcoal. Stone packing on E and S sides up to 0.15m. 2 flat stones laid on edge and 2 cobbles on east side. Timber would have been c. 0.17m diameter.	Fill of posthole		50			
2	52	Cut	0.89m SE/NW x 0.76m x 0.29m deep. Broad U-shaped profile, rounded base.	Cut of pit	53				
2	53	Fill	Mid brown sand with frequent gravel and occasional large rounded cobbles, rare charcoal.	Fill of pit		52			
2	54	Cut	Pit SE of hearth [044]. Oval in plan, 0.36m SW/NE x 0.33m x 0.33m deep. U-shaped profile.	Cut of pit	55				
2	55	Fill	Mid brown coarse sand and frequent gravel, no charcoal.	Fill of pit		54			
2	56	Cut	0.39m N/E x 0.31m x 0.15m deep. Probably damaged by ploughing and machining Moderate sloping sides, flat base, oval.	Cut of posthole	57				
2	57	Fill	Pale brown silt loam, few small pebbles, 1 piece of burnt bone, odd flecks of charcoal.	Fill of posthole		56			

Watching brief and archaeological excavation, Duntanlich, Perthshire - 524

Area	Context No.	Context Type	Description	Interpretation	Filled by	Fill of	Above	Below	Cut by
2	58	Cut	Circular posthole, 0.42m x 0.42m x 0.18m deep. Near vertical sides and flat base.	Cut of posthole	59				
2	59	Fill	Brown silt loam, small few pebbles, rootlets. 1 large fragment of charcoal.	Fill of posthole		58			
2	60	Cut	0.42m x 0.42m x 0.30m deep. Near vertical sides and flat base.	Cut of posthole	61				
2	61	Fill	Brown silt loam, small few pebbles and cobbles concentrated on N side, probable post packing up to 0.12m diameter.	Fill of posthole		60			
2	62	Cut	0.68m NE/SW x 0.60m x 0.56m deep, near vertical sides and flat base.	Cut of posthole	63				
2	63	Fill	2 very large stones, one flat 0.32m long (at surface) and large rounded cobble up to 0.17m. Few pebbles on NE side so maybe remains of posthole packing.	Fill of posthole		62			
2	64	Cut	0.32m x 0.32m x 0.20m deep, vertical sides and flat base.	Cut of posthole	65				
2	65	Fill	Pebble rich, brown silt loam, few roots. Cobbles up to 0.10m diameter. Flecks of charcoal.	Fill of posthole		64			
2	66	Cut	0.35m x 0.35m x 0.25m deep, but narrows at base to 0.26m N/S x 0.22m E/W. Near straight sides.	Cut of posthole	67				
2	67	Fill	Brown silt loam, lots of pebbles, small cobbles which may have fell into void when post removed.	Fill of posthole		66			
2	68	Cut	0.40m x 0.40m x 0.24m deep. Near vertical sides and flat base.	Cut of posthole	68				
2	69	Fill	Dark brown silt loam, few roots, few flecks of charcoal. 3 large rounded cobbles up to 0.15m diameter. Possible packing though disturbed.	Fill of posthole		69			
2	70	Cut	0.63m x 0.64m x 0.28m deep. Steep sides and near flat base.	Cut of posthole	71				
2	71	Fill	Brown silt loam, few pebbles, roots. Large, possible stone packing on N side, up to 0.13m diameter.	Fill of posthole		70			
2	72	Cut	0.28m N/S x 0.31m E/W x 0.16m deep, near vertical sides and flat base.	Cut of posthole	73				
2	73	Fill	Brown silt loam, very few small pebbles, roots.	Fill of posthole		72			
2	74	Cut	Cut for small pit, immediately E of hearth [044]. 0.45m SW/NE x 0.39m x 0.19m deep. Steep concave profile to rounded base.	Cut of pit	75				
2	75	Fill	Mid brown coarse sand with very frequent gravel. Charcoal rich, especially in upper part to SW.	Fill of pit		74			

Watching brief and archaeological excavation, Duntanlich, Perthshire - 524

Area	Context No.	Context Type	Description	Interpretation	Filled by	Fill of	Above	Below	Cut by
2	76	Cut	Oval 0.50m x 0.44m x 0.22m deep. U-shaped profile with flat base.	Cut of posthole	77				
2	77	Fill	Mid brown coarse sand, occasional small stones and rare charcoal	Fill of posthole		76			
2	78	Cut	Oval, 0.44m x 0.42m x 0.32m deep. U-shaped profile to concave base	Cut of posthole	79				
2	79	Fill	Mid brown coarse sand. Occasional small rounded stones, no charcoal.	Fill of posthole		78			
2	80	Cut	Oval in plan, 0.52m x 0.43m x 0.30m deep. U-shaped profile to concave base.	Cut of posthole	81				
2	81	Fill	Mid brown coarse sand, frequent gravel, large cobble, packing stones.	Fill of posthole		80			
2	82	Cut	1.46m E/W x 1.25m x 0.49m deep. Oval in plan. U-shaped profile to flattish base. Feature edge cut by modern drain along W edge.	Cut of pit	83, 110, 111				
2	83	Fill	Mid brown sand, occasional charcoal and small stones	Upper fill of pit		82			
2	84	Cut	0.34m E/W x 0.29m N/S x 0.15m deep, very truncated, steep sides and flat base	Cut of posthole	85				
2	85	Fill	Grey brown silt, rootless, burnt bone fragments, cobbles c. 0.10m diameter and small pebbles	Fill of posthole		84			
2	86	Cut	Circular, 0.26m x 0.20m deep, near vertical sides and flat base.	Cut of posthole	87				
2	87	Fill	Dark brown silt loam, few pebbles, fragments of burnt bone and charcoal.	Fill of posthole		86			
2	88	Cut	Circular 0.40m x 0.31m diameter. Near vertical sides and flat base fully excavated as packing too dense to half section.	Cut of posthole	89				
2	89	Fill	Dark brown silt loam. Some ash (pink) and charcoal, few cobbles, possible packing, up to 0.14m diameter	Fill of posthole		88			
2	90	Cut	0.35m x 0.35m x 0.28m deep. Near vertical sides and flat base.	Cut of posthole	91				
2	91	Fill	Dark brown silt loam, few roots. Few pebbles, odd flecks of charcoal.	Fill of posthole		90			
2	92	Cut	0.62m N/S x 0.48m E/W x 0.20m vertical sides and flat base.	Cut of posthole	93				
2	93	Fill	Dark brown silt loam. Discrete dumps of ash like material in S. Few pebbles, 1 cobble, few roots.	Fill of posthole		92			
2	94	Cut	0.38m E/W x 0.32m N/S x 0.07m deep. Very truncated, flat base.	Cut of posthole	95				
2	95	Fill	Brown silt loam, few pebbles and roots.	Fill of posthole		94			
2	96	Cut	0.52m x 0.57m x 0.28m deep. Near vertical sides and flat base.	Cut of posthole	97				

Watching brief and archaeological excavation, Duntanlich, Perthshire - 524

Area	Context No.	Context Type	Description	Interpretation	Filled by	Fill of	Above	Below	Cut by
2	97	Fill	Dark brown silt loam, few fragments of burnt bone, flecks of charcoal. Roots.	Fill of posthole		96			
2	98	Cut	0.28m x 0.26m x 0.10m deep, truncated, flat base, vertical sides.	Cut of posthole	99				
2	99	Fill	Brown silt loam with few pebbles	Fill of posthole		98			
2	100	Cut	0.36m x 0.39m x 0.30m deep, near vertical sides and near flat base.	Cut of posthole	101				
2	101	Fill	Dark brown silt loam, roots, burnt bone and few fragments of charcoal. Pebbles c. 0.10m diameter, possible packing as concentrated on N side	Fill of posthole		100			
2	102	Cut	0.33m x 0.35m x 0.19m deep. Near vertical sides and flat base.	Cut of posthole	103				
2	103	Fill	Dark brown silt loam, roots. 1 large cobble, 0.14m diameter. Few pebbles.	Fill of posthole		102			
2	104	Cut	0.30m x 0.30m x 0.16m deep, truncated. Possibly stepped, flat base.	Cut of posthole	105				
2	105	Fill	Dark brown silt loam, few pebbles, roots	Fill of posthole		104			
2	106	Cut	0.59m x 0.54m x 0.31m deep. N side sloping S, E side steep, near flat base	Cut of posthole	107				
2	107	Fill	Dark brown silt loam, few cobbles. 1 large sub-angular stone up to 0.20m diameter, most packing on N side.	Fill of posthole		106			
2	108	Cut	0.54m x 0.68m N/S x 0.29m deep, truncate large posthole, sloping sides, tapers down to flat base	Cut of posthole	109				
2	109	Fill	Cobble packing around post, few pebbles within the fill, roots and rare flecks of charcoal	Fill of posthole		108			
2	110	Fill	Charcoal, rich sand, occasional stone	Middle fill of pit		82	111	83	
	111	Fill	Charcoal and red ash-rich sandy fill	Lower fill of pit		82		110	
	112	Cut	Circular 0.55m diameter, steep sides and concave base, 0.35m deep	Cut of posthole	113				
	113	Fill	Mid brown coarse sand, occasional large packing cobble stones. Very rare charcoal, frequent gravel inclusions	Fill of posthole		112			
	114	Cut	Oval in plan. 0.47m x 0.42m x 0.26m deep, U-shaped profile to concave base.	Cut of posthole	115				
	115	Fill	Mid brown coarse sand with frequent gravel. Several large cobble packing stones. No charcoal.	Fill of posthole		114			

Watching brief and archaeological excavation, Duntanlich, Perthshire - 524

Area	Context No.	Context Type	Description	Interpretation	Filled by	Fill of	Above	Below	Cut by
	116	Cut	Oval in plan. 0.50m NW/SE x 0.38m x 0.26m deep, steep sloping sides to concave base.	Cut of posthole	117				
	117	Fill	Mid brown coarse sand with frequent gravel. Several large cobble packing stones. No charcoal.	Fill of posthole		116			
2	118	Cut	0.43m x 0.34m x 0.18m deep, base slopes gently towards the NE. Oval, near vertical sides, fully excavated.	Cut of posthole	119				
2	119	Fill	Small amount of dumped charcoal and scorched rounded stones at top of the feature, possible whetstone? Brown silt loam, roots	Fill of posthole		118			
2	120	Cut	0.40m x 0.37m x 0.16m deep. Flat base, vertical sides	Cut of posthole	121				
2	121	Fill	Brown silt loam, roots, very few small pebbles	Fill of posthole		120			
2	122	Cut	Fully excavated. 0.35m E/W x 0.23m x 0.20m deep, oval, steep sides and flat base	Cut of posthole	123				
2	123	Fill	Brown silt loam, roots	Fill of posthole		122			
2	124	Cut	0.37m x E/W x 0.30m x 0.17m deep.	Cut of posthole	125				
2	125	Fill	Brown silt loam, few cobbles. Roots	Fill of posthole		124			
2	126	Cut	0.55m x 0.50m x 0.29m deep, near vertical sides and flat base	Cut of posthole	127				
2	127	Fill	Brown silt loam, roots, flecks of charcoal, lots of cobble packing, largest 0.15m diameter and smaller	Fill of posthole		126			
2	128	Cut	0.60m x 0.60m, looks square in plan, 0.19m deep. Near vertical dies and flat base	Cut of posthole	129				
2	129	Fill	Brown silt loam, roots, few cobbles and pebbles	Fill of posthole		128			
2	130	Cut	0.40mN/S x 0.57m E/W x 0.14m deep, cut on E side splayed out, N and S sides steep, near flat base	Cut of posthole	131				
2	131	Fill	Brown silt loam, roots, few cobbles and pebbles	Fill of posthole		130			
2	132	Cut	0.27m N/S x 0.30m x 0.17m deep, vertical sides and flat base	Cut of posthole	133				
2	133	Fill	Brown silt loam roots, very few pebbles	Fill of posthole		132			
2	134	Cut	0.55m x 0.50m x 0.32m deep, steeply sloping sides and flat base	Cut of posthole	135				
2	135	Fill	Brown silt loam, fragments of burnt bone and charcoal, very few pebbles	Fill of posthole		134			

Watching brief and archaeological excavation, Duntanlich, Perthshire - 524

Area	Context No.	Context Type	Description	Interpretation	Filled by	Fill of	Above	Below	Cut by
2	136	Cut	1.35m wide and 0.12m deep. Curvilinear ditch emerging from W section and runs towards S. Shallow concave profile.	Cut of ditch, possible old field boundary?	137				
2	137	Fill	Gravel rich, mid brown sand. No charcoal. Frequent small rounded stones and gravel inclusions. No finds	Fill of Ditch		136			
2	138	Cut	0.86m x 0.80m N/S x 0.55m deep. Slightly undercut on N side and very steeply sloping on S side. E side vertical, flat base	Cut of posthole	139, 140				
2	139	Fill	Dark brown silt loam. Roots. Rare flecks of charcoal. At surface large angular stones, only observed in section, over 0.20m diameter. Smaller packing cobbles, average 0.10m diameter	Upper fill of posthole		138			
2	140	Fill	grey pink ash/sand. Odd flecks of charcoal, cobbles, average 0.14m diameter and pebble concentrated on N side	Lower fill of posthole		138			
2	141	Cut	0.40m x 0.40m x 0.15m deep, near vertical sides, moderately sloping S side.	Cut of posthole	142				
2	142	Fill	Dark brown silt loam, roots	Fill of posthole		141			
2	143	Cut	0.40m x 0.30m x 0.21m deep. Vertical sides and flat base. Disturbed, possibly by burrow on NE side.	Cut of posthole	144				
2	144	Fill	Dark brown silt loam, charcoal flecks, roots and rare pebbles	Fill of posthole		143			
2	145	Cut	0.43m x 0.40m x 0.23m deep, near vertical sides and flat base	Cut of posthole	146				
2	146	Fill	Brown silt loam, cobble packing on N side, average 0.10m diameter, roots. Few pebbles	Fill of posthole		145			
2	147								
2	148								
2	149	Cut	0.40m N/S x 0.30m E/W x 0.14m deep, flat base.	Cut of posthole	150				
2	150	Fill	Charcoal and burnt bone with possible worked stone within brown silt loam	Fill of posthole		149			
2	151	Cut	0.36m x 0.36m x 0.13m deep, vertical sides and flat base	Cut of posthole	152				
2	152	Fill	Brown silt loam, roots, very few small pebbles			151			
2	153	Cut	Plough truncated. 0.60m x 0.60m x 0.17m deep on S and E side, larger cut dipping into smaller cut (base of posthole?)	Cut of posthole	154				

Watching brief and archaeological excavation, Duntanlich, Perthshire - 524

Area	Context No.	Context Type	Description	Interpretation	Filled by	Fill of	Above	Below	Cut by
2	154	Fill	Brown silt loam, roots, few pebbles, rare charcoal	Fill of posthole		153			
2	155	Cut	0.34m x 0.40m E/W x 0.20m deep. Irregular shaped cut, flat base and steep sides	Cut of posthole	156				
2	156	Fill	Brown silt loam, large cobble, few pebbles, roots	Fill of posthole		155			
2	157	Cut	Elongated oval surrounded rectangle, 0.78m E/W x 0.45m. Inward sloping sides to uneven base created by naturally occurring cobbles	Cut of hearth	158				
2	158	Fill	Charcoal rich coarse sand, mid dark brown, with frequent charcoal concentrations. Red ash, particularly between the stones at the base of the cut. Two large stones lay at the centre E of the hearth, heavily blackened by charcoal. All the fragments of slag came out of the E of these two stones, these stones may have served as some rudimentary function.	Fill of metal working hearth.		157			
2	159								
2	160								
2	161	Cut	0.63m x 0.80m x 0.40m deep, vertical N and E sides and steeply sloping S. side, flat base.	Cut of posthole	162				
2	162	Fill	Brown silt loam, roots, lots of cobble packing, average 0.14m diameter. Large packing stone 0.30m at the vertical, odd fleck of charcoal.	Fill of posthole		161			
2	163	Cut	Oval pit, 0.70m x 0.60m x 0.18m depth, moderately steep sides and flat base.	Cut of pit	164, 165				
2	164	Fill	Ash rich below the silt loam, red/pink ash lens and lots of charcoal fragments, very few pebbles.	Upper fill of pit		163	165		
2	165	Fill	Brown silt loam, few flecks of ash, roots	Lower fill of pit		163		164	
2	166	Cut	0.50m x 0.50m x 0.18m depth, moderately steep sides and near flat base.	Cut of possible posthole	167				
2	167	Fill	Loose brown silt loam, roots. 1 large rounded cobble, probably packing, few pebbles	Fill of posthole		166			
2	168	Cut	0.40m x 0.40m x 0.20m depth. Steep sides and flat base	Cut of posthole	169				
2	169	Fill	Brown silt loam, roots. Few pebbles	Fill of posthole		168			
2	170	Cut	0.35m x 0.37m x 0.22m depth. Vertical sides and flat base.	Cut of posthole	171				

Watching brief and archaeological excavation, Duntanlich, Perthshire - 524

Area	Context No.	Context Type	Description	Interpretation	Filled by	Fill of	Above	Below	Cut by
2	171	Fill	Brown silt loam, roots. Few flecks of charcoal	Fill of posthole		170			
2	172	Cut	0.42m x 0.50m x 0.29m depth. Steep sides and flat base	Cut of posthole	173				
2	173	Fill	Brown silt loam, roots, few cobbles 0.10m to 0.12m diameter	Fill of posthole		172			
2	174	Cut	0.36m x 0.36m x 0.20m depth, vertical sides and flat base	Cut of posthole	175				
2	175	Fill	Brown silt loam, few flecks of charcoal, roots	Fill of posthole		174			
2	176	Cut	Oval 0.60m diameter, disturbed on E side. Concave profile to flattish base. About 70% of cut edge surviving.	Possible cut of posthole	177				
2	177	Fill	Mid brown coarse sand, frequent gravel and small stones	Fill of possible posthole		176			
2	178	Cut	0.55m x 0.60m x 0.25m depth, steep sides and flat base	Cut of posthole	179				
2	179	Fill	Pale brown silt loam, roots, cobbles average 0.10m diameter, rare charcoal.	Fill of posthole		178			
2	180	Cut	0.48m x 0.46m x 0.30m deep. Vertical sides and flat base	Cut of posthole	181				
2	181	Fill	Brown silt loam, roots, few pebbles, very few small cobbles average 0.07m diameter	Fill of posthole		180			
2	182	Cut	0.35m x 0.38m x 0.26m deep. Vertical S and W sides and dipping N side.	Cut of posthole	183				
2	183	Fill	Brown silt loam, roots. Very few pebbles, rare fleck of charcoal.	Fill of posthole		182			
2	184	Cut	0.45m x 0.45m x 0.24m deep. Steep sides and flat base, slightly irregular cut	Cut of posthole	185				
2	185	Fill	Dark brown silt loam, few pebbles, roots	Fill of posthole		184			
2	186	Cut	0.40m x 0.40m x 0.37m but slightly irregular cut. More gently sloping upper lip on N and W sides, probably driven in post	Cut of posthole	187				
2	187	Fill	Dark brown silt loam, roots, few pebbles, charcoal flecks	Fill of posthole		186			
2	188	Cut	0.40m x 0.31m x 0.34m deep. Vertical sides and flat base.	Cut of posthole	189				
2	189	Fill	Dark brow to pale brown silt loam, few fragments of charcoal, roots. Few large packing stones, cobbles up to 0.17m diameter	Fill of posthole		188			
2	190	Cut	0.54m x 0.57m x 0.23m deep. Steep to moderately sipping sides, near flat base	Truncated cut of posthole	191				

Watching brief and archaeological excavation, Duntanlich, Perthshire - 524

Area	Context No.	Context Type	Description	Interpretation	Filled by	Fill of	Above	Below	Cut by
2	191	Fill	Dark brown silt loam, probable packing cobbles up to 0.10m diameter, roots	Fill of posthole		190			
2	192	Cut/fill	0.75m x 1.15m x 0.08m oval pit with steep sides and flat base. Pale brown sand loam, roots, probably 19th/20th century	Modern cut and fill of pit					
2	193	Cut/fill	Rectangular pit 1.40m x 0.90m x 0.14m deep, very steep sides and flat base with light brown sand loam, roots and small pebbles, probably 19th/20th century	Modern cut and fill of pit					
2	194	Cut/fill	Banana shaped pit 1.70m x 0.70m x 0.37m deep. Rounded ends and very steep sides. Dark brown silt loam, odd cobble, lots of pebbles, sherd of late 19th or 20th century pottery	Modern cut and fill of pit					
2	195	Cut	0.45m x 0.45m x 0.20m, steep sides and flat base	Possible cut of posthole	196				
2	196	Fill	Brown silt loam, roots, pebbles. Very stony towards base and re-deposited yellow grit, may not be that old	Fill of possible posthole		195			
2	197	Cut	0.50m x 0.50m x 0.16m deep, steep sides and flat base.	Possible cut of posthole	198				
2	198	Fill	Pale brown silt loam, few pebbles and few flecks of charcoal	Fill of possible posthole		197			
2	199	Cut	0.33m x 0.33m x 0.17m vertical sides and flat base.	Cut of posthole	200				
2	200	Fill	2 packing stones, largest at angle and 0.15m diameter. Set in pale brown silt loam with roots. Odd flecks of charcoal.	Fill of posthole		199			
2	201	Cut	0.70m x 0.40m x 0.23m deep, steeply sloping sides and near flat base.	Cut of pit	202				
2	202	Fill	Fine grey brown silt loam, few pebbles, roots and rare charcoal	Fill of pit		201			
2	203	Cut	0.47m x 0.47m x 0.18m deep. Moderately sloping sides to narrower centre, driven post?	Cut of posthole	204				
2	204	Fill	Grey brown silt loam, few roots. Odd fleck of charcoal	Fill of posthole		203			
2	205	Cut	0.73m x 0.74m x 0.20m deep. Very steep sides and near flat base.	Cut of pit/posthole	206				
2	206	Fill	Greyish brown fine sand loam, roots and small pebbles. Pebbles concentrated towards base, but not different context	Fill of pit/posthole		205			
2	207	Cut	0.75m x 0.63m x 0.22m deep, moderate sloping sides and near flat base	Cut of pit	208				
2	208	Fill	Dark reddish brown silt, roots. Odd chunk of charcoal, rare pebbles. Roots	Fill of pit		207			

Watching brief and archaeological excavation, Duntanlich, Perthshire - 524

Area	Context No.	Context Type	Description	Interpretation	Filled by	Fill of	Above	Below	Cut by
2	209	Cut	Ditch, adjacent to (033), located on W side. Just starts to appear in S facing section of slit 2. Clearer in N facing section where 0.40m deep and 0.50m at widest point. Fill merges with (034) though it has more cobbles in it in the N facing section.	Cut of ditch					
2	210	Cut	Only visible in N facing section of Slot 2. Broad U-shaped 1m wide and 0.27m deep.	Cut of pit?/ditch?	211				
2	211	Fill	Very similar to (034) but more charcoal especially at the base. Possible that this fill washed down into (209), very hard to be sure, but if so earlier than (209). Very few cobbles.	Fill of pit/ditch		210			
2	212	Cut	Ditch running along the edge of the cliff, roughly orientated E/W. Appears to run to the edge and then along the very edge of it. U-shaped cut up to 1m wide and 0.44m deep, cut into gravel	Cut of ditch	213				
2	213	Fill	Red brown silt loam, rare gravel and pebbles, roots, tree roots, no charcoal	Fill of ditch		212			
2	214	Cut	0.40m x 0.33m x 0.23m deep. Irregular oval, upper sides gently sloping dipping steeper into the central cut, 0.15m x 0.15m.	Cut of pit	215				
2	215	Fill	Brown silt loam mixed with dump of charcoal and burnt bone. Not insitu burning but lots of ash. Much disturbed by tree roots.	Fill of pit		214			
2	216	Cut	Linear ditch running NE/SW downslope diagonally. Investigated by 3 slots, concave profile, max. depth 0.60m	Cut of ditch	217				
2	217	Fill	Single fill of ditch in Slot 3. Coarse mid brown sand and rounded gravels. Frequent rounded stones, increasing in number with depth. No charcoal.	Ditch fill		216			
2	218	Fill	Brown silt loam, roots, flecks of charcoal, lower lens of charcoal, few pebbles	Ditch fill		216			
2	219	Fill	Dark brown sand loam, lots of charcoal, burnt stones, sheep bones.	Ditch fill, lower topsoil		216	220		
2	220	Fill	Brown sand loam, few cobbles, very few pebbles, odd flecks of charcoal	Ditch fill		216		219	

Appendix 2: Drawing register

No.	Sheet	Plan	Section/profile	Scale	Description
1	1		*	1:10	SE facing section of pit [004]
2	1		*	1:10	NE facing section of ditch [016] Slot 2
3	1		*	1:10	NE facing section of ditch [007] Slot 1
4	1		*	1:10	NE facing section of pit [010]
5	1		*	1:10	E facing section of pit [012]
6	1		*	1:10	NE facing section of ditch [024]
7	1		*	1:10	NE facing ditch [021] slot 3
8	1		*	1:10	E facing section of ditch [014]
9	1	*		1:20	Pit [010]
10	1	*		1:20	Pit [012]
11	2		*	1:10	NE facing section of ditch [025] slot 5
12	2		*	1:10	SE facing section of ditch [021] slot 6
13	3	*		1:20	Plan of (039)
14	3	*		1:20	Plan of (038)/(040)
15	4	*		1:50	Plan of features [184] - [195]
16	4	*		1:50	Plan of possible roundhouse [172]-[182]
17	5	*		1:50	Plan of suite of postholes [044]-[172]
18	6		*	1:10	S facing section of posthole [041]
19	6		*	1:10	N facing section of posthole [068]
20	6		*	1:10	SE facing section of posthole [062]
21	6		*	1:10	E facing section of posthole [048]
22	6		*	1:10	E facing section of posthole [058]
23	6		*	1:10	E facing section of posthole [066]
24	6		*	1:10	E facing section of posthole [050]
25	6		*	1:10	E facing section of posthole [060]
26	6		*	1:10	E facing section of posthole [072]
27	6		*	1:10	E facing section of posthole [070]
28	6		*	1:10	SE facing section of posthole [056]
29	6		*	1:10	SE facing section of posthole [064]
30	7		*	1:10	SE facing section of posthole [025]
31	7		*	1:10	SE facing section of posthole [027]
32	7		*	1:10	S facing section of posthole [029]
33	7		*	1:10	S facing section of posthole [031]
34	7		*	1:10	SE facing section of posthole [036]
35	7		*	1:10	N facing section of pit [044]
36	7		*	1:10	S facing section of posthole [084]
37	7		*	1:10	E facing section of posthole [086]
38	7		*	1:10	S facing profile of posthole [088]
39	7		*	1:10	S facing section of ditch [033]
40	7		*	1:10	E facing section of posthole [080]
41	7		*	1:10	E facing section of posthole [092]
42	7		*	1:10	S facing section of posthole [074]
43	7		*	1:10	E facing section of posthole [096]
44	7		*	1:10	SE facing section of posthole [090]
45	7		*	1:10	S facing section of posthole [098]
46	7		*	1:10	E facing section of posthole [100]
47	7		*	1:10	E facing section of posthole [102]
48	7		*	1:10	s facing section of posthole [104]
49	7		*	1:10	E facing section of posthole [106]
50	7		*	1:10	S facing section of posthole [108]
51	7		*	1:10	S facing section of pit [082]

Watching brief and archaeological excavation, Duntanlich, Perthshire - 524

No.	Sheet	Plan	Section/profile	Scale	Description
52	7		*	1:10	E facing section of posthole [134]
53	7		*	1:10	E facing section of posthole [132]
54	7		*	1:10	E facing section of posthole [130]
55	7		*	1:10	E facing section of posthole [126]
56	7		*	1:10	SE facing section of posthole [128]
57	7		*	1:10	E facing section of posthole [155]
58	7		*	1:10	N facing section of posthole [120]
59	7		*	1:10	E facing section of posthole [153]
60	7		*	1:10	E facing section of posthole [122]
61	7		*	1:10	E facing profile of posthole [118]
62	7		*	1:10	W facing section of posthole [157]
63	7		*	1:10	W facing section of posthole [124]
64	7		*	1:10	E facing section of posthole [145]
65	7		*	1:10	E facing profile of posthole [149]
66	7		*	1:10	E facing profile of posthole [151]
67	7		*	1:10	E facing profile of posthole [141]
68	7		*	1:10	W facing profile of posthole [143]
69	7		*	1:10	SE facing profile of posthole [176]
70	7		*	1:10	E facing profile of posthole [138]
71	7		*	1:10	N facing section of pot [157]
72	7		*	1:10	W facing profile of posthole [124]
73	7		*	1:10	E facing profile of ditch [136] slot 1
74	7		*	1:10	SE facing profile of ditch [136] slot 2
75	7		*	1:10	SE facing profile of posthole [145]
76	7		*	1:10	N facing profile of posthole [076]
77	7		*	1:10	NE facing profile of posthole [112]
78	7		*	1:10	NE facing profile of posthole [078]
79	8	*		1:50	Plan of postholes [197]-[203]
80	8		*	1:10	E facing section of posthole [197]
81	8		*	1:10	E facing section of posthole [199]
82	8		*	1:10	S facing section of posthole [201]
83	8		*	1:10	S facing section of posthole [203]
84	8	*		1:50	E facing section of posthole [205]
85	8		*	1:10	Plan of posthole [205]
86	8		*	1:10	S facing section of posthole [207]
87	8	*		1:50	Plan of posthole [207]
88	8		*	1:10	W facing section of posthole [214]
89	8	*		1:50	Plan of posthole [214]
90	8		*	1:10	N facing section of ditch [033], [209] & [210] slot 2
91	8		*	1:10	S facing section of ditch [209], [210], [023] slot 2
92	8		*	1:10	E facing section of ditch [212]
93	8		*	1:10	E facing section of ditch [216] slot 3
94	8		*	1:10	E facing section of ditch [216] slot 2
95	8		*	1:10	E facing section of ditch [216] slot 1
96	9		*	1:10	NE facing section of posthole [116]
97	9		*	1:10	SW facing section of posthole [114]
98	9		*	1:10	SW facing section of posthole [166]
99	9		*	1:10	E facing section of posthole [161]
100	9		*	1:10	NE facing section of posthole [163]
101	9		*	1:10	W facing section of posthole [168]
102	9		*	1:10	N facing section of posthole [170]
103	9		*	1:10	NE facing section of posthole [172]

Watching brief and archaeological excavation, Duntanlich, Perthshire - 524

No.	Sheet	Plan	Section/profile	Scale	Description
104	9		*	1:10	W facing section of posthole [174]
105	9		*	1:10	N facing section of posthole [178]
106	9		*	1:10	N facing section of posthole [180]
107	9		*	1:10	W facing section of posthole [182]
108	9		*	1:10	W facing section of posthole [184]
109	9		*	1:10	W facing section of posthole [186]
110	9		*	1:10	W facing profile of posthole [188]
111	9		*	1:10	S facing section of posthole [190]
112	9		*	1:10	S facing section of posthole [195]
113	9	*		1:50	Plan of possible roundhouse [052]-[176]
114	10	*		1:100	Plan of ditch [216]
115	10	*		1:100	Plan of ditch [033]
116	11	*		1:100	Plan of ditch [212] and posthole [214]

Appendix 3: Photographic register

No.	Area	Context	Description	Taken from
1	3, 4	1	Pit	E
2	3, 4	1	Pit	E
3	3, 4	1	Pit	E
4	3, 4	1	Pit	E
5	3, 4	1	Pit	E
6	3, 4	1	Pit	E
7		1	Ditch	N
8		1	Ditch	N
9		1	Ditch	N
10	3, 4	1	Pit	E
11	3, 4	1	Pit	E
12	8	1	Linear burnt pit	W
13	8	1	Linear burnt pit	W
14	8	1	Linear burnt pit	W
15	8	1	Linear burnt pit	W
16	9	1	Burnt, ash fill	W
17	9	1	Burnt, ash fill	W
18	10	1	Cut	W
19	10	1	Cut	W
20	7	1	Ditch Slot 1	S
21	16	1	Ditch slot 2	S
22	11	1	Burnt pit	W
23	11	1	Burnt pit	W
24	11	1	Burnt pit	W
25	11	1	Burnt pit	W
26	11	1	Burnt pit	W
27	12	1	Cut of burnt pit	W
28	12	1	Cut of burnt pit	W
29	7	1	Slot 3, ditch	S
30	7	1	Slot 3, ditch	S
31	7	1	Slot 3, ditch	S
32	14	1	Ditch	W
33	11, 12	1	Fill (011) in burnt pit [012]	W
34	11, 12	1	Fill (011) in burnt pit [012]	W
35	19	1	Ash, charcoal dump in ditch	S

Watching brief and archaeological excavation, Duntanlich, Perthshire - 524

No.	Area	Context	Description	Taken from
36	19	1	Ash, charcoal dump in ditch	S
37	24	1	Ditch	N
38	24	1	Ditch	N
39			General site photo	W
40			General site photo	W
41		1	Main Ditch under excavation	S
42		1	Main Ditch under excavation	S
43		1	Main ditch slot 5 section	N
44		1	Main ditch slot 5 section	S
45		1	Main ditch machine slot 6	N
46		1	Main ditch machine slot 6	N
47		1	Possible ditch Slot 7	N
48		1	Possible ditch Slot 7	S
49		1	Possible ditch Slot 7	S
50		1	Ditch slot 5	S
51	25, 26	2	Half section of posthole facing SE	SE
52	25, 26	2	Half section of posthole facing SE	SE
53	27, 28	2	Half section of posthole facing SE	SE
54	27, 28	2	Half section of posthole facing SE	SE
55	29, 30	2	Half section of posthole	S
56	29, 30	2	Half section of posthole	S
57	31, 32	2	Half section of posthole	S
58	31, 32	2	Half section of posthole	S
59	33, 34	2	North facing section of ditch	N
60	33, 34	2	North facing section of ditch	N
61	33, 34	2	North facing section of ditch	N
62	39	3	Cluster of flat stones	W
63	39	3	Cluster of flat stones	W
64	39	3	Cluster of flat stones	W
65	39	3	Cluster of flat stones	W
66	39	3	Cluster of flat stones	W
67	39	3	Cluster of flat stones	W
68	39	3	Cluster of flat stones	W
69	39	3	Cluster of flat stones	W
70	40	3	Spread	E
71	40	3	Spread	E
72	40	3	Spread	E
73	40	3	Spread	W
74	39	3	Post-exc when stones removed	E
75	39	3	Post-exc when stones removed	S
76	44	2b	Section (e facing)	N
77	44	2b	Section (e facing)	N
78	44	2b	Section (e facing)	N
79	44	2b	Section (e facing)	N
80	44	2b	Post-exc of hearth	SE
81	44	2b	Post-exc of hearth	SE
82	44	2b	Post-exc of hearth	SE
83	41	2	Half section of posthole	SW
84	41	2	Half section of posthole	SW
85	41, 48, 50	2	3 half sectioned postholes	SW
86	48, 50	2	2 half sectioned postholes	S

Watching brief and archaeological excavation, Duntanlich, Perthshire - 524

No.	Area	Context	Description	Taken from
87	48	2	half sectioned posthole	S
88	50	2	half sectioned posthole plan view	S
89	50	2	half sectioned posthole plan view	S
90	52	2b	Pit [052] section	NE
91	52	2b	Pit [052] section	NE
92	54	2b	posthole	S
93	54	2b	posthole	S
94	54	2b	posthole	S
95	56	2	Posthole section	S
96	68	2	Posthole section	N
97	58	2	Posthole section	E
98	60	2	Posthole section	E
99	64	2	Posthole section	SE
100	62	2	Posthole section	SE
101	66	2	Post-exc of posthole	E
102	72	2	Posthole section	E
103	70	2	Posthole section	E
104	74	2b	Posthole section	N
105	74	2b	Posthole section	N
106	74	2b	Posthole section	N
107	76	2b	Posthole section	NE
108	76	2b	Posthole section	NE
109	76	2b	Posthole section	NE
110	78	2b	Posthole section	SSE
111	78	2b	Posthole section	SSE
112	78	2b	Posthole section	SSE
113	80	2b	Posthole section	
114	80	2b	Posthole section	
115	80	2b	Posthole section	
116	84	2	Posthole section	S
117	86	2	Posthole section	E
118	88	2	Post-exc of posthole	S
119	90	2	Posthole section	SE
120	92	2	Posthole section	E
121	94	2	Posthole section	S
122	96	2	Posthole section	E
123	96, 98	2	Posthole section	S
124	100	2	Posthole section	E
125	102	2	Posthole section	E
126	104	2	Posthole section	S
127	106	2	Posthole section	E
128	108	2	Posthole section	S
129		2	General shot of postholes	
130	82	2b	Partial excavation of pit [082] showing charcoal rich fill (110)	W
131	82	2b	Partial excavation of pit [082] showing charcoal rich fill (110)	W
132	82	2b	Partial excavation of pit [082] showing charcoal rich fill (110)	W
133	82	2b	Partial excavation of pit [082] showing charcoal rich fill (111)	W
134	82	2b	Partial excavation of pit [082] showing charcoal rich fill (111)	W

Watching brief and archaeological excavation, Duntanlich, Perthshire - 524

No.	Area	Context	Description	Taken from
135	82	2b	Partial excavation of pit [082] showing charcoal rich fill (111)	W
136	82	2b	Hearth sectioned	W
137	82	2b	Hearth sectioned	W
138	82	2b	Hearth sectioned	W
139	82	2b	Hearth sectioned	W
140	112	2b	Posthole section	E
141	112	2b	Posthole section	E
142	112	2b	Posthole section	E
143	114	2b	Posthole section	SW
144	114	2b	Posthole section	SW
145	114	2b	Posthole section	SW
146	116	2b	Posthole section	NE
147	116	2b	Posthole section	NE
148	116	2b	Posthole section	NE
149	136	2b	Slot 1	E
150	136	2b	Slot 1	E
151	136	2b	Slot 1	E
152	134	2	Posthole section	E
153	153	2	Posthole section	E
154	132	2	Posthole section	E
155	130	2	Posthole section	E
156	126	2	Posthole section	E
157	128	2	Posthole section	NE
158	155	2	Posthole section	NE
159	120	2	Posthole section	NE
160	122, 118	2	Postholes in plan	W
161	157	2	Posthole section	W
162	124	2	Posthole section	W
163	145	2	Posthole section	E
164	149, 151	2	Posthole section	E
165	138	2	Posthole section	E
166	141	2	Posthole section	E
167	143	2	Posthole section	E
168	157, 158	2	Posthole section	E
169	157, 158	2b	Hearth [157]	S
170	157, 158	2b	Hearth [157]	S
171	157, 158	2b	Hearth [157]	S
172	157, 158	2b	Hearth [157]	S
173		2	Shot of posthole cluster	S
174		2	Shot of posthole cluster	S
175		2	Shot of posthole cluster	S
176		2	Shot of posthole cluster	S
177		2	Shot of posthole cluster	S
178		2	Shot of posthole cluster	N
179		2	Shot of posthole cluster	N
180		2b	Shot of area 2b	S

Watching brief and archaeological excavation, Duntanlich, Perthshire - 524

No.	Area	Context	Description	Taken from
181		2	Shot of posthole cluster	N
182		2	Shot of posthole cluster	N
183		2	Shot of posthole cluster	N
184		2	Shot of posthole cluster	N
185		2	Shot of posthole cluster	N
186		2	Shot of posthole cluster	N
187		2	Line of postholes	N
188		2	Line of postholes	N
189		2	Line of postholes	N
190		2	Line of postholes	N
191	157	2b	post-exc of hearth	E
192	157	2b	post-exc of hearth	E
193	157	2b	post-exc of hearth	E
194			possible posthole sectioned	E
195			possible posthole sectioned	E
196	166	2	Posthole section	W
197	161	2	Posthole section	E
198	161	2	Posthole section	E
199	163	2	Posthole section	SW
200	168	2	Posthole section	
201	170	2	Posthole section	
202	172	2	Posthole section	E
203	174	2	Posthole section	
204	178	2	Posthole section	
205	180	2	Posthole section	
206	182	2	Posthole section	
207		2	Possible roundhouse	W
208		2	Possible roundhouse	W
209		2	Possible roundhouse	S
210	184	2	Posthole section	W
211	186	2	Posthole section	W
212	188	2	Posthole section	W
213	190	2	Posthole section	S
214	194	2	Posthole section	E
215	193	2	Posthole section	S
216	192	2	Posthole section	W
217		2	Large machine cut through ditch	E
218		2	Large machine cut through ditch	E
219		2	Large machine cut through ditch	W
220		2	Large machine cut through ditch	W
221		2	Large machine cut through ditch west	W
222		2	Large machine cut through ditch west	E
223		2	General shot of large ditch along the cliff edge	E
224		2	General shot of large ditch along the cliff edge	E
225		2	General shot of large ditch along the cliff edge	W
226		2	Ditch running from cliff north	S
227		2	Large ditch along cliff	E
228		2	Ditch running up from cliff, north	S
229	203	2	Posthole section	S

Watching brief and archaeological excavation, Duntanlich, Perthshire - 524

No.	Area	Context	Description	Taken from
230	201	2	Pit section	S
231	199	2	Posthole section	E
232	197	2	Pit section	E
233	205	2	Pit section	E
234	207	2	Pit section	S
235	207,033	2	Pit and ditch	
236	33	2	Slot 2 of ditch	S
237	33	2	Slot 2 of ditch	S
238	33	2	Slot 2 of ditch	N
239	33	2	Slot 2 of ditch	N
240	214	2	Posthole section	N
241	214	2	Posthole section	NE
242	216	2	Slot 1 ditch section	E
243	216	2	Slot 1 ditch section	E
244	216	2	General shot of ditch [216]	E
245	216	2	Slot 2, ditch section	E
246	216	2	Slot 2, ditch section	E
247	216	2	Slot 3, ditch section	E
248	216	2	Slot 3, ditch section	E
249	216	2	Slot 2, osl sample	N

Appendix 4: Bulk Sample

No.	Area	Context	No. of bags
1	1	9	1
2	1	11	1
3	1	19	1
4	3	40	2
5	2	42	2
6	2	45	2
7	2	89	1
8	2	93	1
9		110	2
10		111	2
11		119	1
12		149	1
13		139	1
14		140	1
15		158	2
16		161	2
17		49	1
18		51	1
19		63	1
20		127	1
21		135	1
22		7	1
23		107	1

Watching brief and archaeological excavation, Duntanlich, Perthshire - 524

No.	Area	Context	No. of bags
24		61	1
25		97	1
26		187	1
27		189	2
28		164	1
29		165	1
30		173	1
31		171	1
32		179	1
33		200	1
34		202	1
35		205	1
36		208	1
37		211	2
38		34	1
39		215	2
40		218	2
41		113	1
42		81	1

Appendix 5: finds

No.	Area	Context	Type
1	1	3	2 sherds of redware
2	1	2	1 sherd of redware
3	2	1	1 sherd of white gritty
4	2	1	1 sherd of decorated reduced ware
5	3	40	quartz
6	2	125	flint
7	1	22	2 flint and 1 quartz
8	3	38	slag
9	2	45	slag
10	2b	110	slag/hammerscale
11	3	40	iron object
12	2	191	slag
13	2b	158	slag
14	3	40	slag
15	1	2	nail
16	2	119	whetstone ?
17	3	38	2 possible whetstones
18	2	150	whetstone ?
19	2	45	burnt bone
20	3	40	burnt bone
21	3	38	burnt bone
22	3	38	nail

Watching brief and archaeological excavation, Duntanlich, Perthshire - 524

Appendix 6: DES Entry

LOCAL AUTHORITY:	Perth and Kinross Council
PROJECT TITLE/SITE NAME:	Duntanlich Mine
PROJECT CODE:	524
PARISH:	Logierait
NAME OF CONTRIBUTOR:	Clare Ellis
NAME OF ORGANISATION:	Argyll Archaeology
TYPE(S) OF PROJECT:	Watching brief and excavation
NMRS NO(S):	
SITE/MONUMENT TYPE(S):	Ditch, posthole, roundhouse, buried soil, fire-pit, hearth
SIGNIFICANT FINDS:	Flint
NGR (2 letters, 8 or 10 figures)	NN97253 52200
START DATE (this season)	17 th April 2019
END DATE (this season)	24 th July 2019
PREVIOUS WORK (incl. DES ref.)	Mathews, A 2015 Duntanlich Barite Mine, Pitlochry. Archaeological evaluation, Data Structure Report. (Rathmell Archaeology Ltd).
MAIN (NARRATIVE) DESCRIPTION: (May include information from other fields)	<p>A watching brief was undertaken on the southernmost portion of the construction of a new road associated with Duntanlich mine, Perthshire. The watching brief was followed by open area excavation of the archaeological features as revealed. The archaeological features comprised: a series of ditches; a cluster of parallel aligned postholes; the remnants of a roundhouse with a possibly associated firepit; part of a possible second roundhouse; an isolated hearth; and a buried soil with an associated stone stance. An assessment was made of 15% of the bulk samples (6 samples) and three radiocarbon dates were also obtained. The assessment has revealed that the suite of parallel postholes are likely to date to the early historic/pictish period and at least one of the postholes contained a small amount of carbonised oats and barley as well as fragments of hazelnut shell. The suite of postholes occurred in a series of parallel lines and it is possible that these are the remains of a large timber hall or the remains of number of smaller timber buildings. The assessment phase also revealed that the buried soil and the associated stone stance similarly date from the early historic/pictish period. However, not all the features excavated are of this date; a large firepit possibly associated with a circle of postholes and which was fuelled by oak and hazel returned an iron age date. A hearth, currently undated, and which was located just to the north of the firepit also yielded oak and hazel charcoal. A posthole associated with a second possible roundhouse contained a mixture of wood species indicating that its fill was derived from domestic hearth ash. Finally, the upper fill of a ditch located to the southeast of the suite of postholes contained oak charcoal, while the main ditch with Area 1 yielded two pieces of struck flint. However, all the excavated ditches currently remain undated.</p> <p>In summary the results of the excavation and the assessment phase has revealed an iron age (3rd to 4th century BC) firepit and possibly associated hearth and roundhouse(s). In 7th or early 8th century AD a probable timber structure or structures were located downslope of a buried soil to which domestic refuse had been added presumably to increase soil fertility. It is thought likely that the ditches also date to the early historic/pictish period but this remains to be proven.</p>
PROPOSED FUTURE WORK:	Programme of post-excavation

Watching brief and archaeological excavation, Duntanlich, Perthshire - 524

CAPTION(S) FOR ILLUSTRS:	
SPONSOR OR FUNDING BODY:	SLR Consulting Ltd
ADDRESS OF MAIN CONTRIBUTOR:	Davaar Cottage, Campbeltown, Argyll. PA28 6RE
EMAIL ADDRESS:	ellisclare@argyll-archaeology.co.uk
ARCHIVE LOCATION (intended/deposited)	NRHE (intended)