


Object Number	K568	Description	Hilt-collar in gold, of high form, with garnet cloisonné decoration. Catalogue no. 164.
		Sample Description and location.	
		Sample K568-1 collected from within disrupted cells near end of strip.	

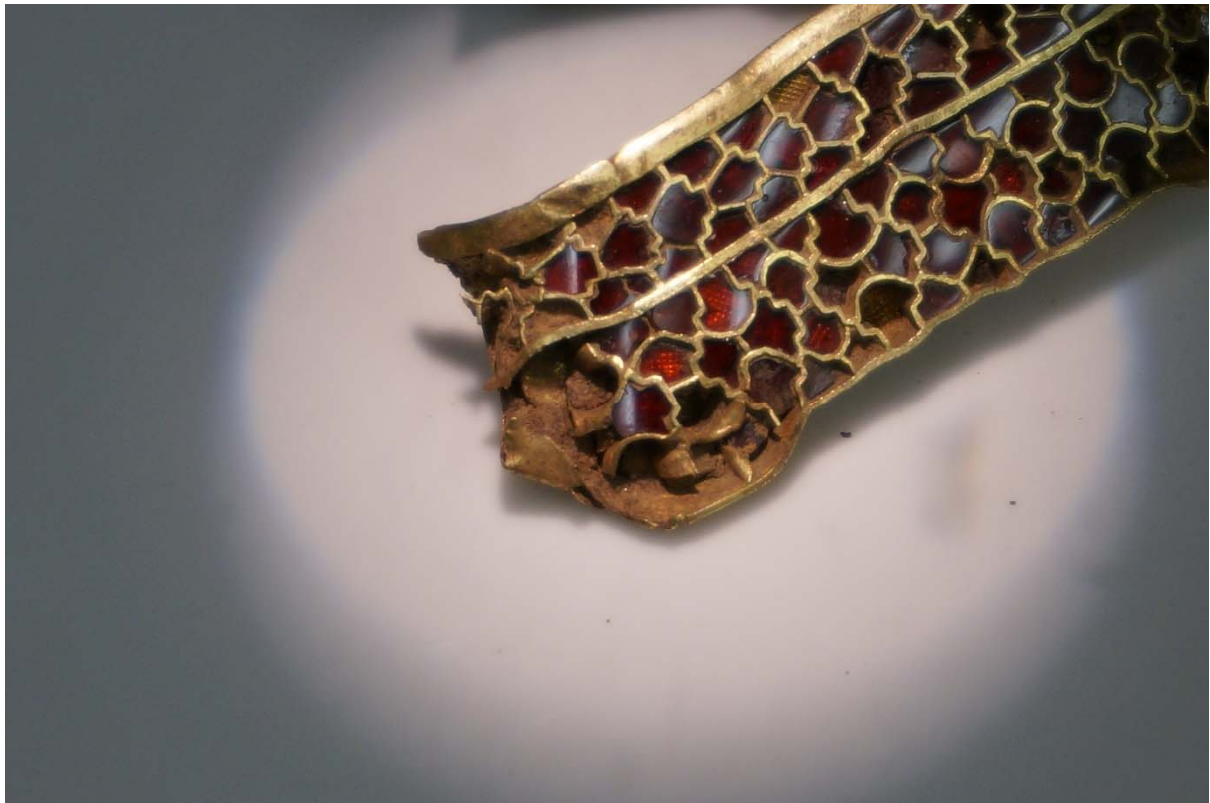


Figure 1. Sample K568-1 collected from disrupted cells near broken edge.

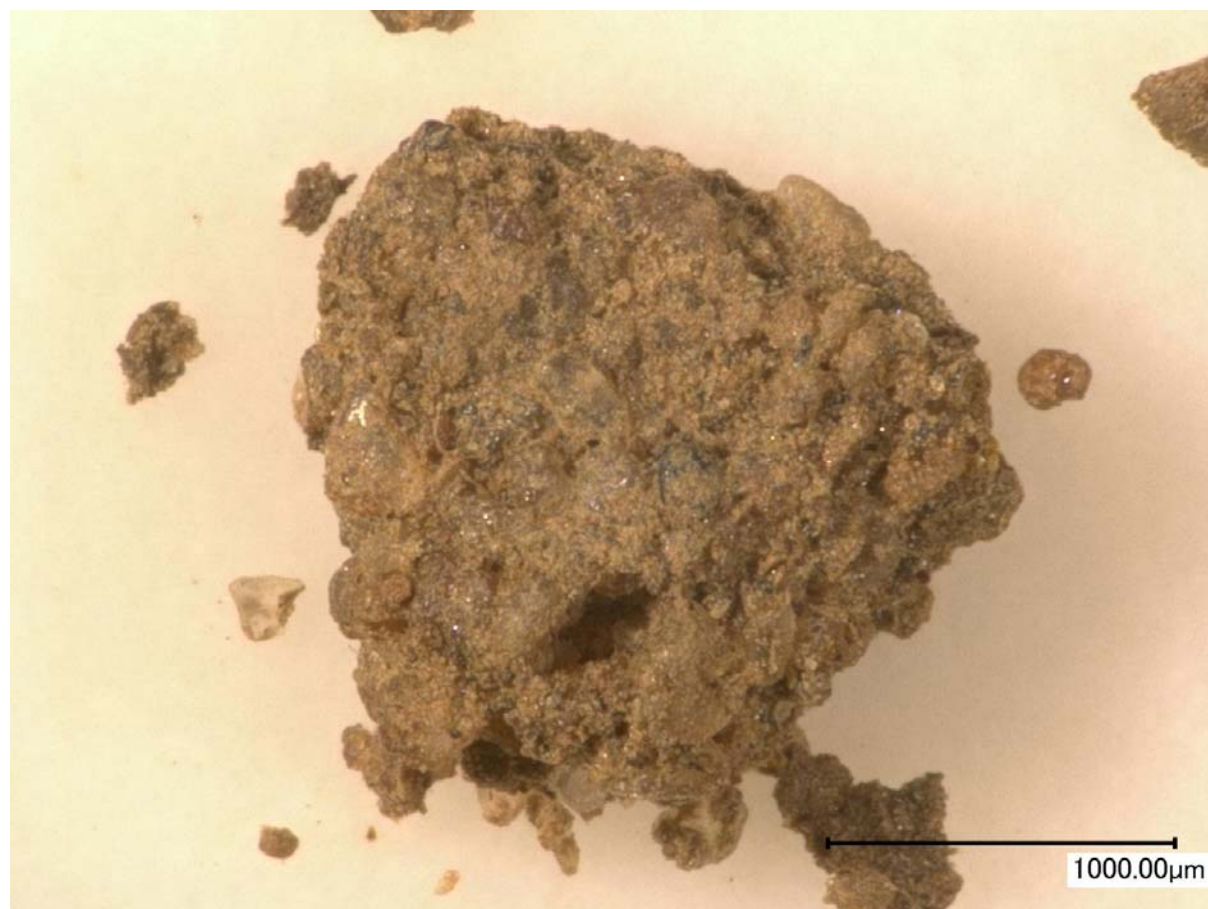


Figure 2. Detail of sample K568-1 collected from disrupted cells near broken edge.

FTIR Analysis

Comments: Spectrum K568-1-1 (top, blue) is representative of the spectra collected for this sample and is a close spectral match for diatomaceous earth- a naturally occurring, soft, siliceous sedimentary rock that is typically a combination of silicates, alumina, and iron oxide. The sample is likely clay related to the burial environment.

Representative Spectrum

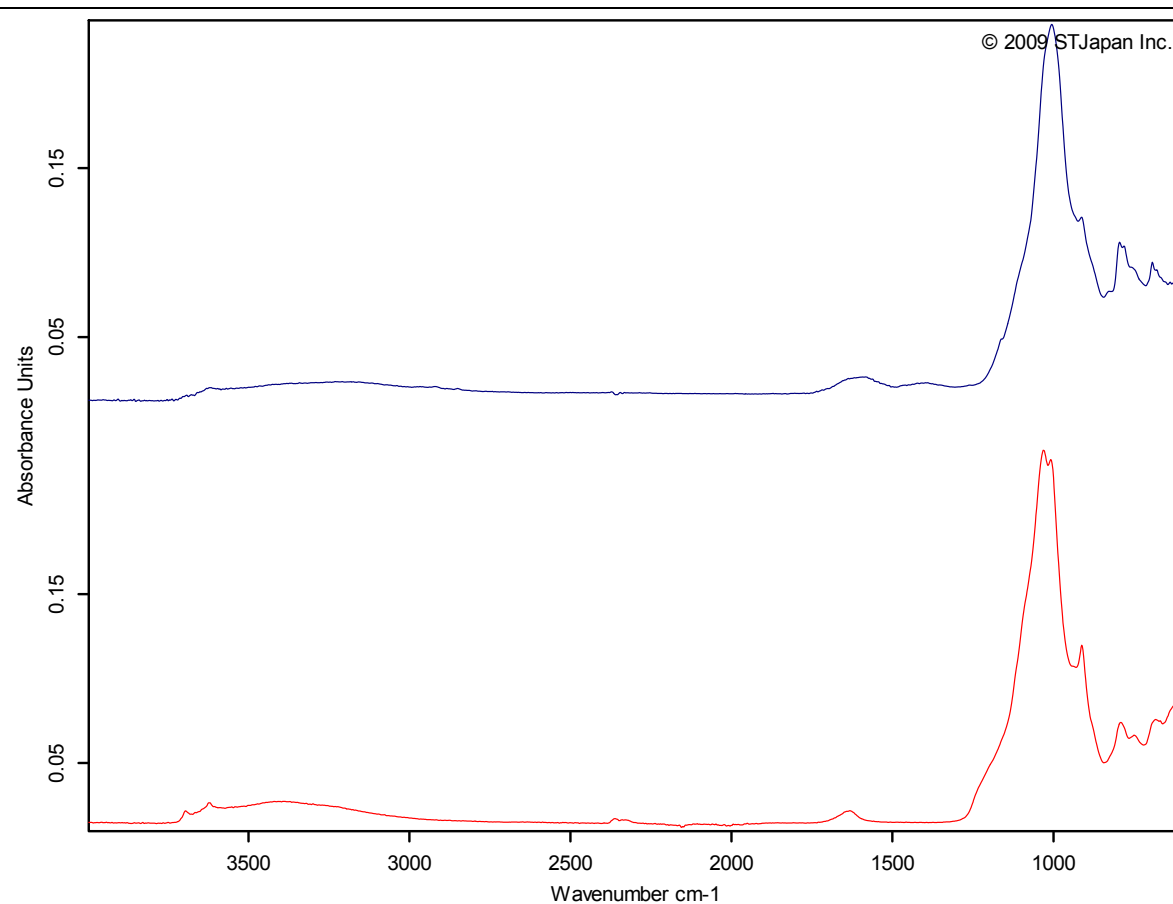


Figure 3. Top (blue) K568-1-1. Bottom (red), Diatomaceous Earth reference sample, ST Japan 2009.