



***Staffordshire Hoard
Catalogue***

**The Catalogue
Part 3: Hilt-rings**



**Text and Drawings: Chris Fern
Photographs: Aleksandra Osinska,
Lucy Martin and Guy Evans**

2017

This catalogue forms part of
The Staffordshire Hoard: an Anglo-Saxon Treasure
edited by C. Fern, T. Dickinson and L. Webster
and published by the Society of Antiquaries of London

Introduction

This pdf catalogue provides text entries, together with photographs for the majority of the objects (in most instances). In addition, line drawings accompany many of those with complex decoration, which offer interpretations of the art. The full catalogue for each item can be found in the database, along with more photos in many cases.

In each entry the catalogue number is in **bold** font, with the original [*K-number*] given in italics and square brackets. Where a catalogue entry is composed of more than one *K-number*, in the database all the details pertaining to it are attached to the first *K-number* in the sequence. (Additional images of individual *K-number* fragments/objects within groups will be found in the specific *K-number* database entry.) The weight measurement for catalogue entries formed of more than one *K-number* fragment/object is an aggregate of all the pieces that make up the whole.

The *Note* entry provides select details of other fragments/objects with which the piece was found, but it was not practical to do this for all *K-number* fragments/objects, where they had been parts of large fragment groups (e.g. soil blocks), or where the catalogue entry comprises many fragments: full details of all associations between fragments/objects are in e-Tables 2 and 3.

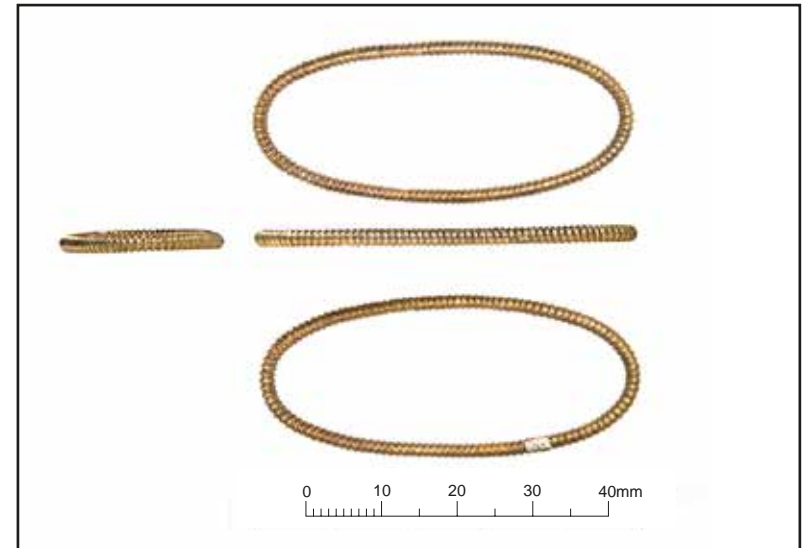
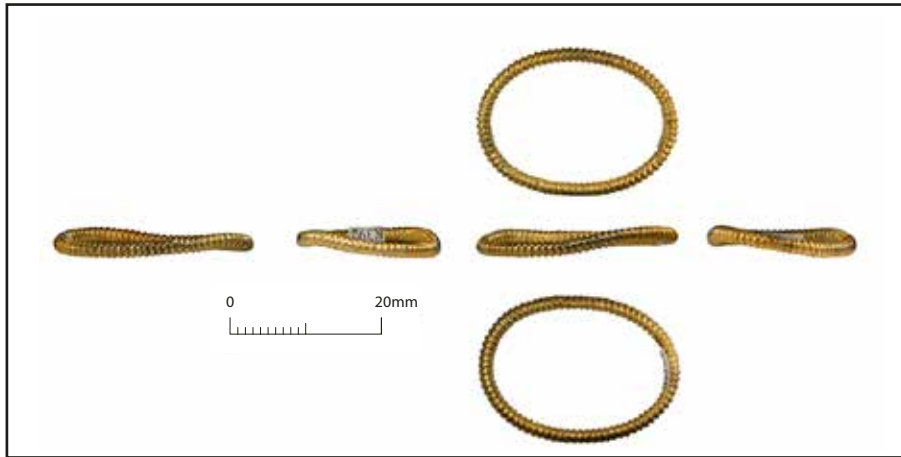
The *Grid location* entry gives information about the original find position of fragments/objects (by *K-number*) found within the 1m x 1m grid established during the Birmingham Archaeology excavations (2009). The finds made by Archaeology Warwickshire (2012) have also been related to this grid, but note, as these finds came from backfilled and ploughed soil, they are not directly comparable to the former. The alpha-numeric prefix given to finds relates to the several recording systems used for the different phases of recovery prior to the establishing of the *K-number* system by Kevin Leahy, and are as follows:

TH ('Terry Herbert'): the number series originally applied to the metal detectorist's finds (these have no locations).

SCC: Staffordshire County Council emergency test pit.

BA: Birmingham Archaeology excavation.

All information and images are copyright of Barbican Research Associates Ltd unless otherwise stated.



191–192 Photography Aleksandria Osinska, Cotswold Archaeology.

191 [K392]

HILT-RING OF THICK GOLD BEADED WIRE. Possibly from the upper grip; preserves the oval section of the grip exactly. *Wear/marks*: light wear. Beading slightly flattened on one edge, possibly from contact with a hilt-guard/plate. Original soldered join in the ring is visible. *Set*: possibly a pair with hilt-ring **192**; a possible match to the impression on hilt-plate **318**.

(*Grid location*: [K392] TH143, no location)

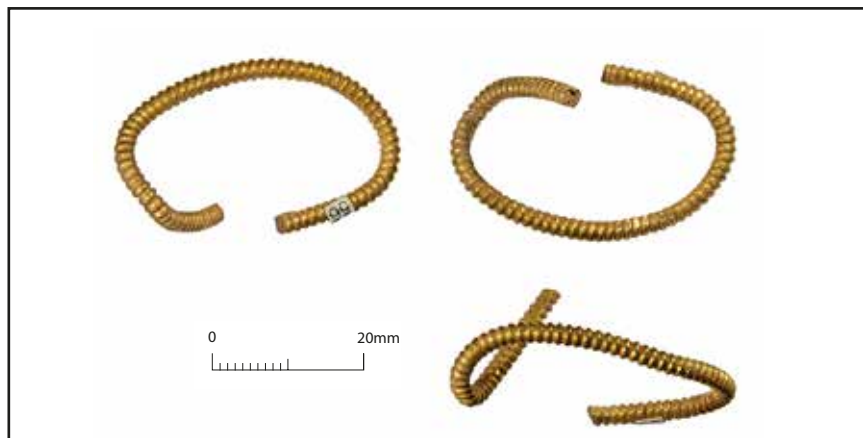
L. 26mm; W. 19.5mm; Diam. 2mm; Wt 2.68g; X-ray: L20

192 [K470]

HILT-RING OF THICK GOLD BEADED WIRE. Possibly from the lower grip; preserves the oval form of the grip exactly. *Wear/marks*: light wear. Beading slightly flattened on one edge, probably from contact with a hilt-guard/plate. *Set*: possibly a pair with hilt-ring **191**; a possible match to the impression on hilt-plate **244**.

(*Grid location*: [K470] TH238, no location)

L. 50mm; W. 22mm; Diam. 2.5mm; Wt 4.96g; X-ray: L49



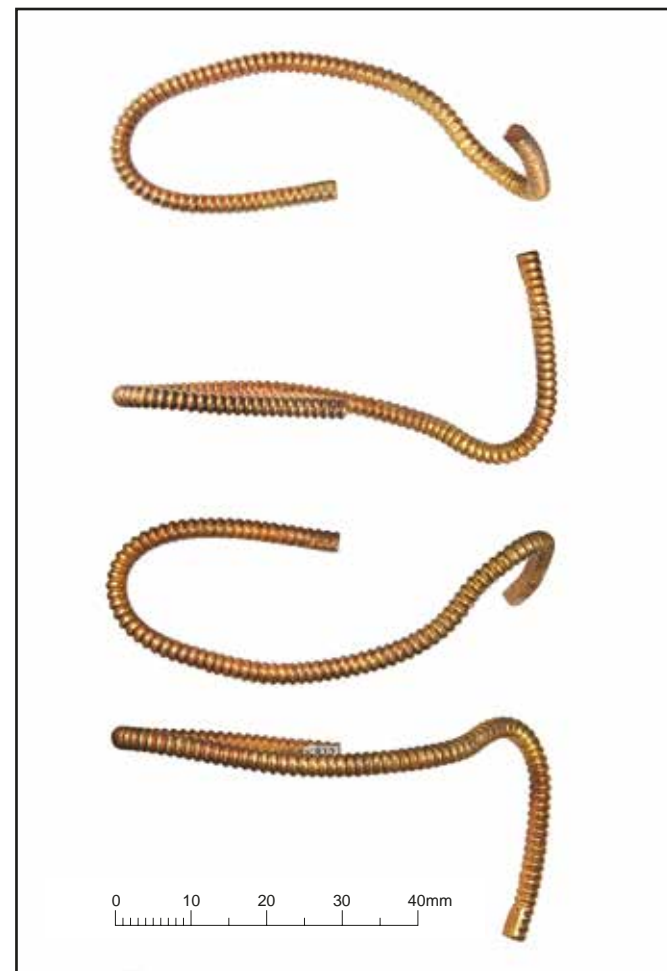
193-4 Photography Aleksandria Osinska, Cotswold Archaeology.

193 [K56]

HILT-RING OF THICK GOLD BEADED WIRE. Possibly from the upper grip; preserves the general oval section of the grip. Possibly broken open at the original soldered butt-join. *Wear/marks*: light wear. Beading slightly flattened on two edges, probably from contact with the grip and a hilt-guard/plate. Possible tool/cut mark. *Set*: possibly a pair with hilt-ring **194**.

(*Grid location*: [K56] BA0062, grid L11)

L. 37.5mm; W. 24mm; Diam. 3mm; Wt 8.10g; X-ray: L20

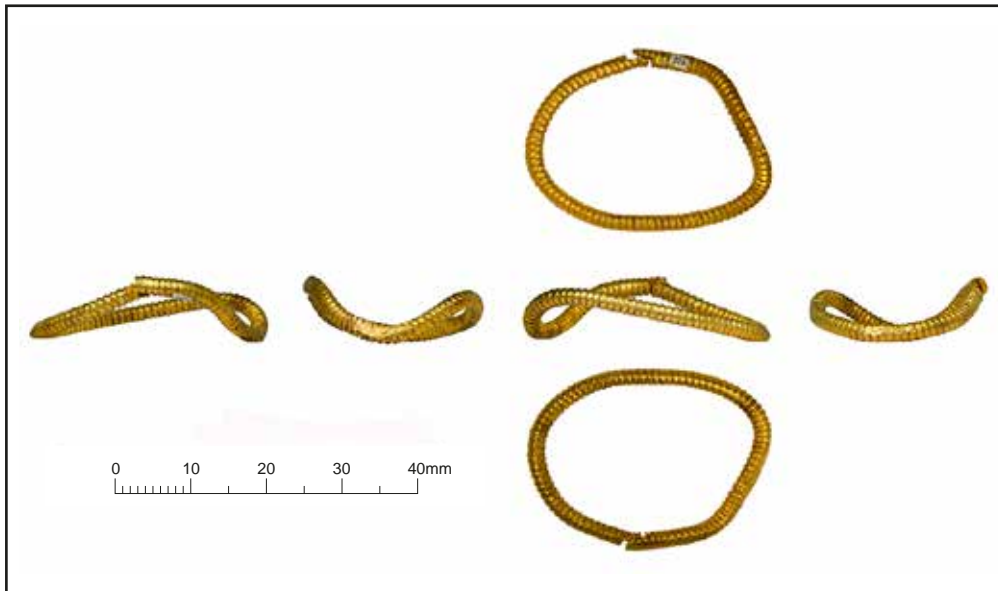


194 [K812]

HILT-RING OF THICK GOLD BEADED WIRE. Possibly from the lower grip. Broken open at the original soldered butt-join and misshapen. *Wear/marks*: light wear. Beading slightly flattened on the inside edge, probably from contact with the grip. *Set*: possibly a pair with hilt-ring **193**.

(*Grid location*: [K812] BA0112, grid J10)

L. 59mm; W. 21mm; Diam. 3mm; Wt 12.78g; X-ray: L48



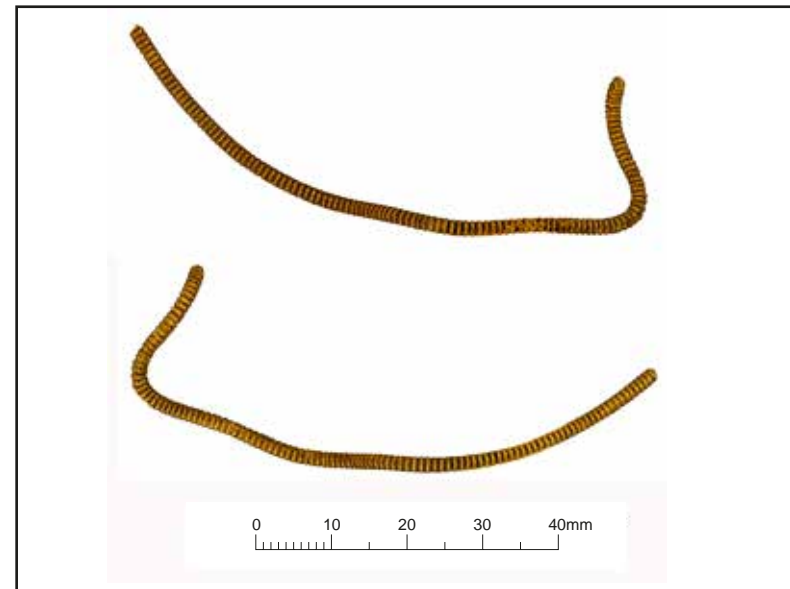
195 Photography Aleksandria Osinska, Cotswold Archaeology.

195 [K574]

HILT-RING OF THICK GOLD BEADED WIRE. Possibly from the upper grip. Cut open, one end bent up, but preserves generally the oval section of the grip. *Wear/marks:* moderate wear to one edge. Beading flattened across one edge, possibly from contact with a hilt-guard/plate, but it is also damaged where the side is lifted (?levered), with flattening probably caused by a tool (?tongs). *Set:* possibly a pair with hilt-ring **196**.

(*Grid location:* [K574] TH019, no location)

L. 32mm; W. 24mm; Diam. 2mm; Wt 5.26g; X-ray: L20



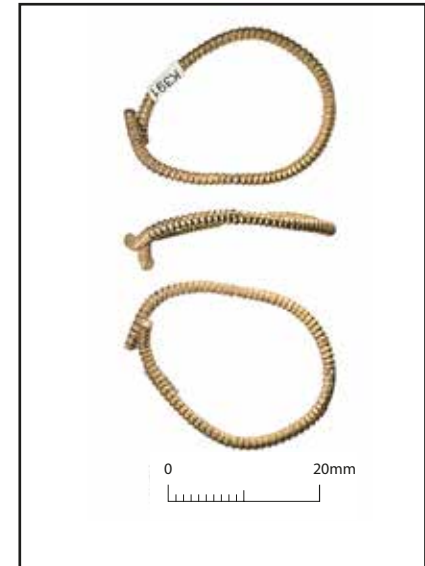
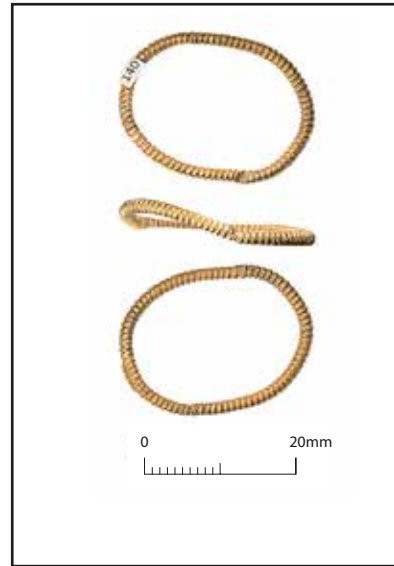
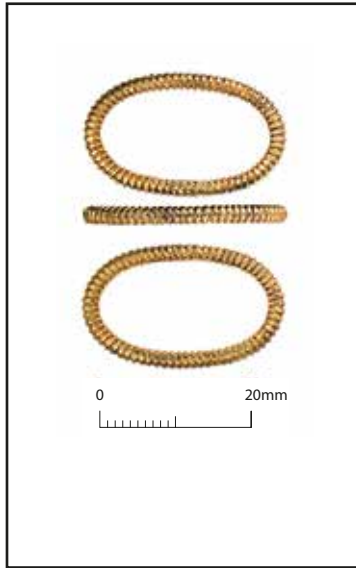
196 Photography Guy Evans, Barbican Research Associates.

196 [K692]

HILT-RING OF THICK GOLD BEADED WIRE. Possibly from the lower grip. Cut open and misshapen. *Wear/marks:* moderate wear. Beading slightly flattened in one place, possibly from contact with a hilt-guard/plate/grip. *Set:* possibly a pair with hilt-ring **195**.

(*Grid location:* [K692] TH091, no location)

L. 75mm; Diam. 2mm; Wt 5.44g; X-ray: L45



197–199 Photography Lucy Martin, Cotswold Archaeology.

197 [K1426]

HILT-RING OF THICK GOLD BEADED WIRE. Possibly from the upper grip; preserves exactly the oval section of the grip. *Wear/marks:* light wear. The beading is flattened on top and bottom edges, possibly from contact with a hilt-guard/plate and other hilt-fittings. Scratches on one edge from a ?tool/light cut marks.

(*Note:* [K1426] part of soil block 4)

(*Grid location:* [K1426], no location)

L. 27mm; W. 16.5mm; Diam. 2.5mm; Wt 4.65g;
X-ray: L20

198 [K140]

HILT-RING OF THICK GOLD BEADED WIRE. Possibly from the upper grip; preserves the oval section of the grip. Slightly misshapen. Original soldered butt-join visible. *Wear/marks:* light wear. Cut mark one side.

(*Grid location:* [K140] US0006, no location)

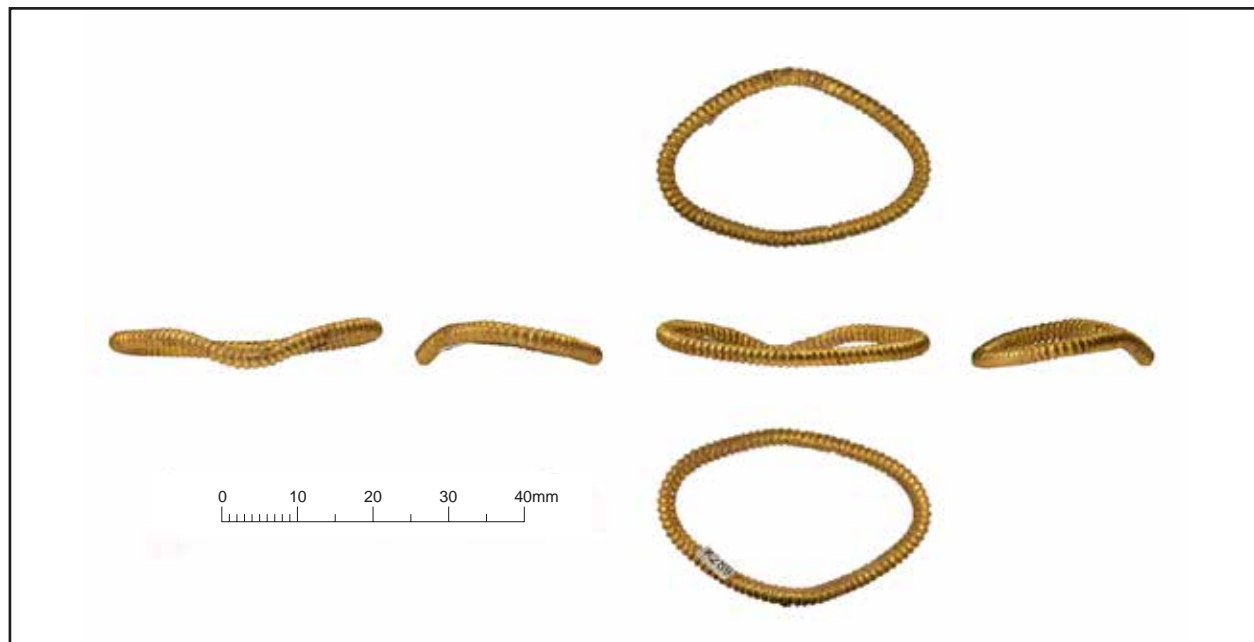
L. 26mm; W. 20mm; Diam. 2mm; Wt 2.79g; X-ray: L37

199 [K391]

HILT-RING OF THICK GOLD BEADED WIRE. Possibly from the upper grip. Possibly broken open. Original soldered, angled join in the ring visible. *Wear/marks:* light wear. Beading flattened in two places, possibly from damage or from contact with other parts/fittings of the hilt.

(*Grid location:* [K391] TH145, no location)

L. 28mm; W. 21mm; Diam. 2mm; Wt 2.43g;
X-ray: L37



200 Photography Aleksandria Osinska, Cotswold Archaeology.

200 [K289]

HILT-RING OF THICK GOLD BEADED WIRE. Possibly from the lower grip; preserves the oval section of the grip. *Wear/marks*: light wear. Dented on one edge with a cut mark (?levered with a blade). Beading slightly flattened on several edges, possibly from contact with the grip, a hilt-guard/plate or other fittings.

(*Grid location*: [K289] TH169, no location)

L. 36mm; W. 23.5mm; Diam. 2.5mm; Wt 6.46g; X-ray: L20

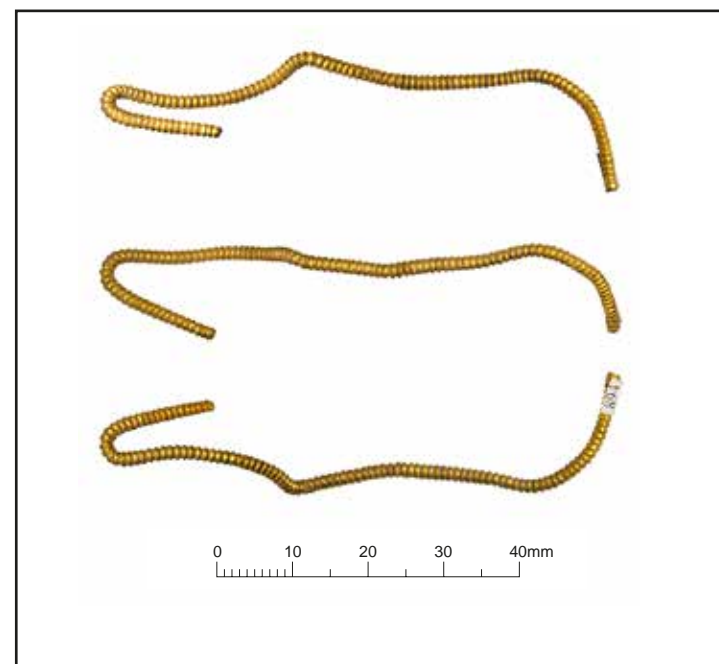


201 [K1134]

HILT-RING OF THICK GOLD BEADED WIRE. Ends cut at an angle and one end bent. *Wear/marks*: light wear. Small area of damage.

(*Grid location*: [K1134] BA0498, grid Q9)

L. 36mm; W. 35mm Diam. 2mm; Wt 2.38g; X-ray: L49



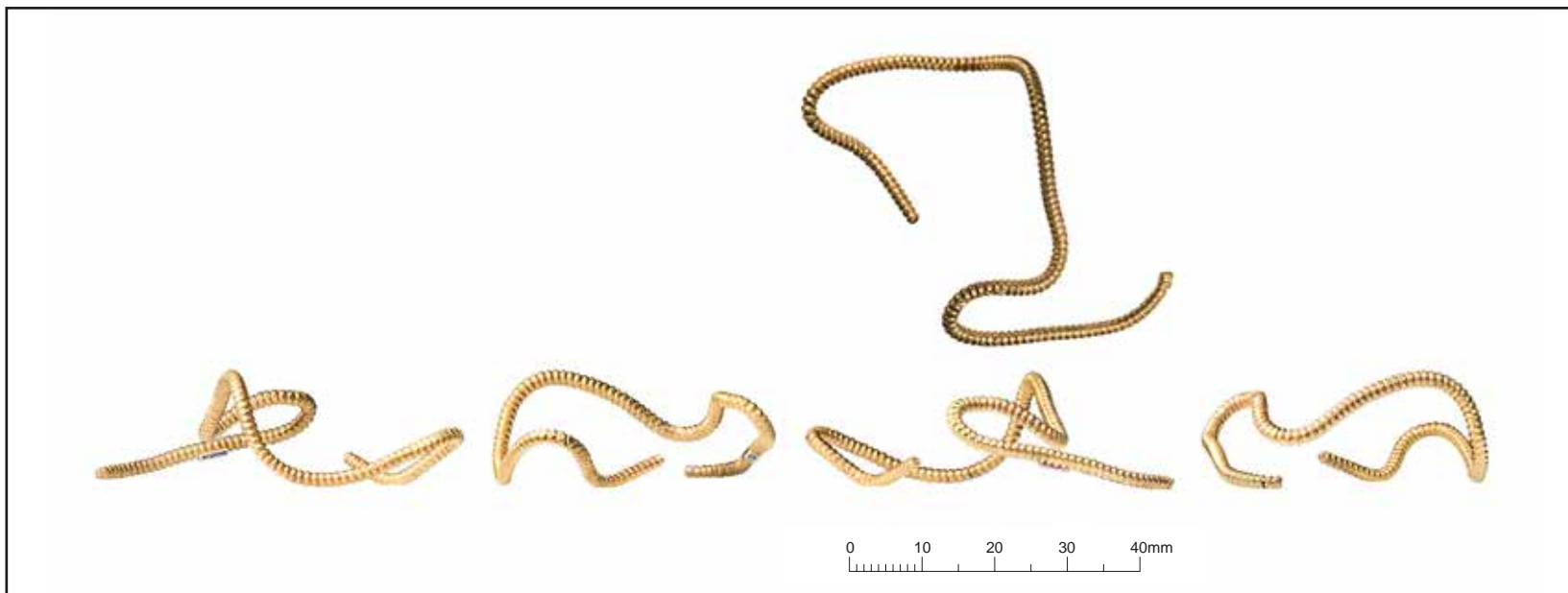
201-202 Photography Aleksandria Osinska, Cotswold Archaeology.

202 [K894]

HILT-RING OF THICK GOLD BEADED WIRE. Misshapen, but possibly complete. Possibly broken open at the original soldered butt-join. *Wear/marks*: light wear.

(*Grid location*: [K894] BA1065, no location)

L. 76mm; Diam. 2mm; Wt 5.28g; X-ray: L20



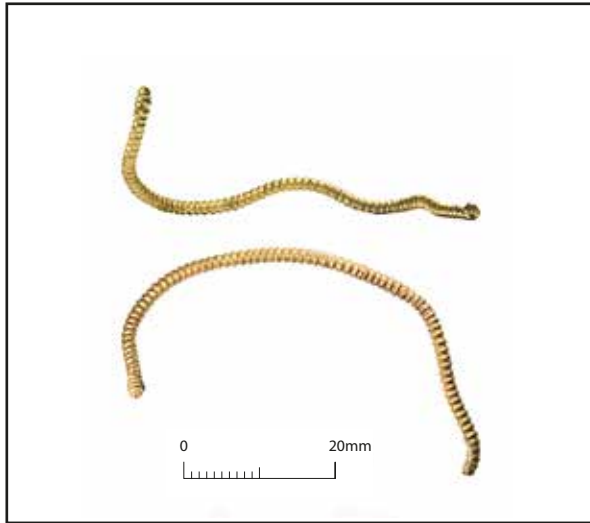
203 Photography Lucy Martin, Cotswold Archaeology.

203 [K986]

HILT-RING OF THICK GOLD BEADED WIRE. Possibly broken open at the original soldered butt-join and misshapen. *Wear/marks*: moderate wear. Flattening of the beading, possibly from contact with other hilt parts.

(*Grid location*: [K986] BA0281, grid M8)

L. 50mm; Diam. 2mm; Wt 5.27g; X-ray: L50



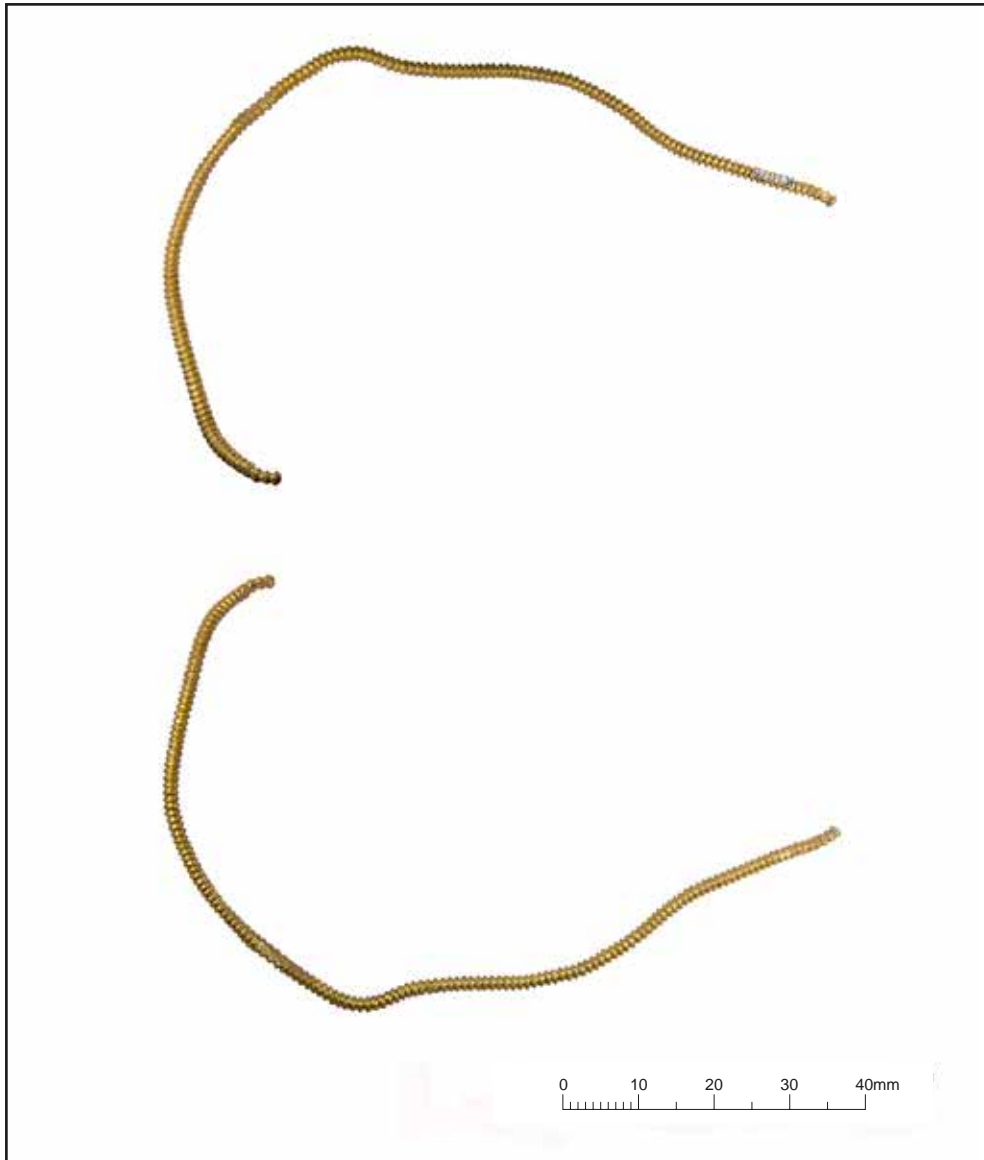
204 Photography Lucy Martin, Cotswold Archaeology.

204 [K1060]

HILT-RING OF THICK GOLD BEADED WIRE. Broken open and misshapen, but possibly complete. *Wear/marks*: light wear. Small area of flattening, possibly from contact with a hilt-plate/guard. Cut mark one end.

(*Grid location*: [K1060] BA0154, grid M8)

L. 47mm; Diam. 2mm; Wt 2.83g; X-ray: L50



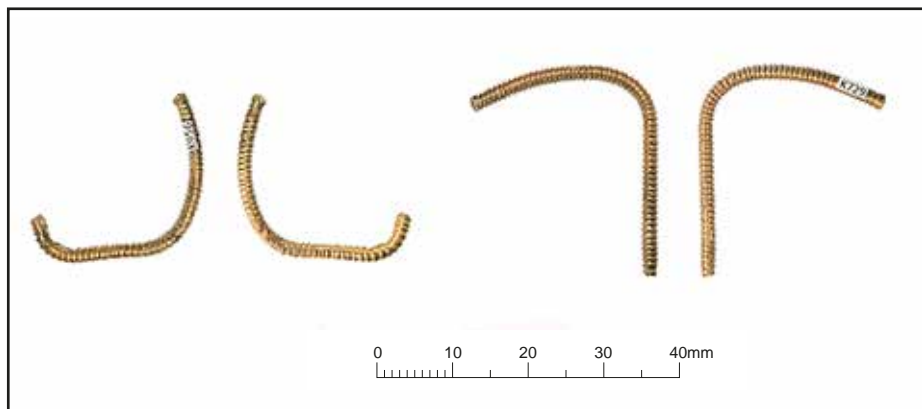
205 Photography Aleksandria Osinska, Cotswold Archaeology.

205 [K1076]

HILT-RING OF THICK GOLD BEADED WIRE. Broken open and misshapen. *Wear/marks:* light wear. Pinched one edge, the beading flattened, perhaps by a tool (?tongs). Cut mark one end.

(*Grid location:* [K1076] BA0170, grid M11)

L. 79mm; Diam. 2mm; Wt 5.17g; X-ray: L50



206 Photography Lucy Martin, Cotswold Archaeology.

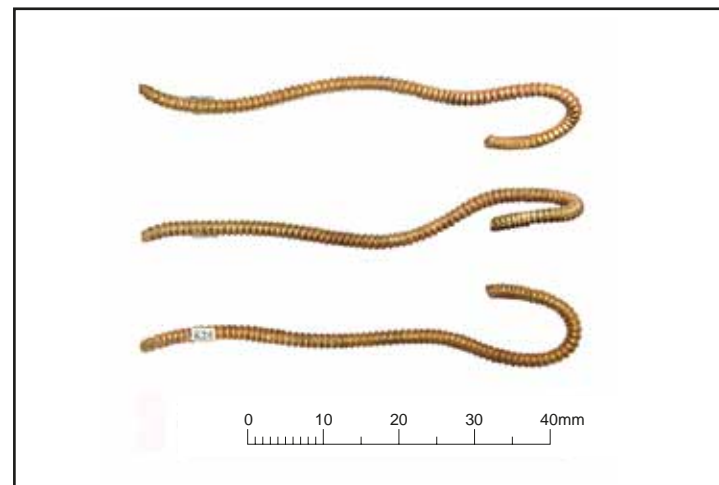
206 [K729, K956]

HILT-RING OF THICK GOLD BEADED WIRE. Possibly complete, two fragments with an uncertain join (they are not certainly the same ring, but the beading is very similar); all ends broken, two possibly broken at the original soldered butt-join. *Wear/marks*: light wear. Beading is pinched one edge [956], possibly caused by a tool (?tongs). Cut marks one end [K729].

(*Note*: fragment [K729] part of finds group BA0204)

(*Grid location*: [K729] BA0204, grid M12; [K956] BA0251, no location)

L. 22/27mm; Diam. 2mm; Wt 1.99g; X-ray: L45, L49



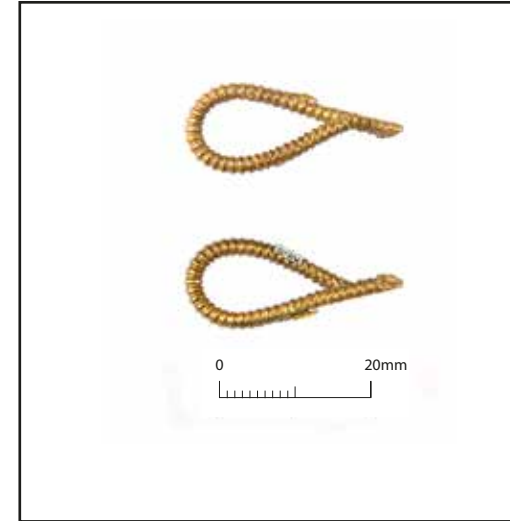
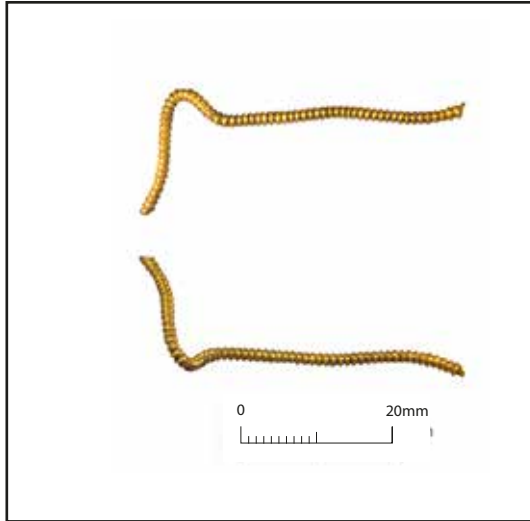
207 Photography Aleksandria Osinska, Cotswold Archaeology.

207 [K28]

HILT-RING OF THICK GOLD BEADED WIRE. Incomplete and opened out, one end has a cut mark. *Wear/marks*: light wear.

(*Grid location*: [K28] BA0226, grid L12)

L. 57mm; Diam. 2mm; Wt 2.77g; X-ray: L50



208–209 Photography Aleksandria Osinska, Cotswold Archaeology.

208 [K1220]

LENGTH OF THICK GOLD BEADED WIRE, PROBABLY A HILT-RING. Probably incomplete, ends cut at an angle, and opened out. *Wear/marks:* light wear.

(*Grid location:* [K1220] BA0297, grid M8)

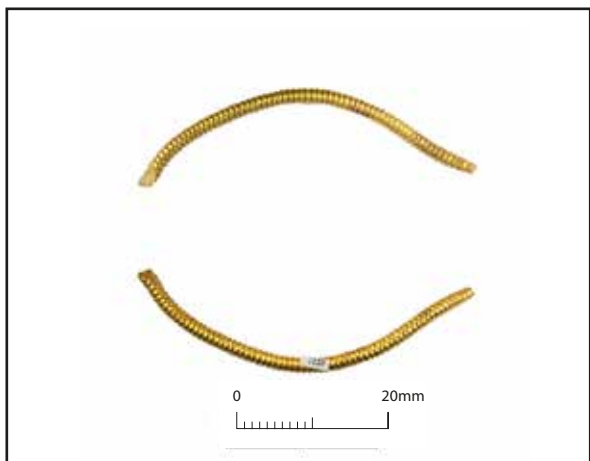
L. 40.5mm; Diam. 1.5mm; Wt 1.13g; X-ray: L49

209 [K926]

HILT-RING FRAGMENT OF THICK GOLD BEADED WIRE. Bent into a loop, one end cut at an angle. *Wear/marks:* light wear. Cut mark one side.

(*Grid location:* [K926] BA1035, no location)

L. 22mm; Diam. 2mm; Wt 1.37g; X-ray: L49



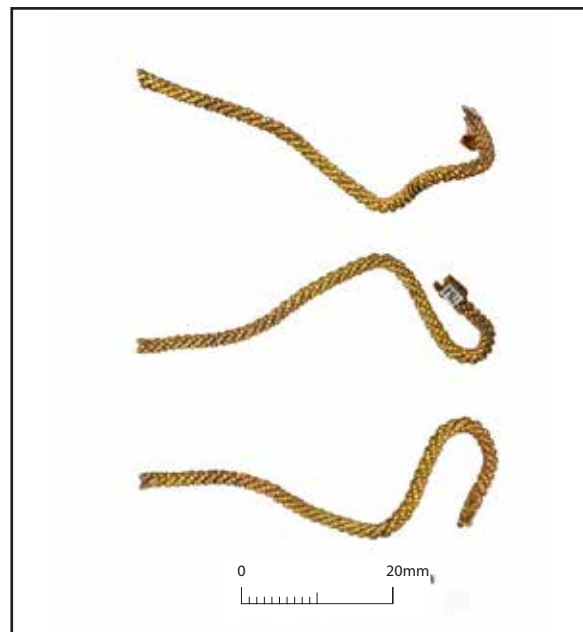
210–11 Photography Aleksandria Osinska, Cotswold Archaeology.

210 [K1120]

HILT-RING OF THICK GOLD BEADED WIRE. Incomplete and misshapen, one end cut at an angle, the other end broken (possibly at butt-join). *Wear/marks*: light wear. Beading slightly flattened on one edge, possibly from contact with a hilt-guard/plate.

(*Grid location*: [K1120] BA0434, grid P12)

L. 42mm; Diam. 2mm; Wt 2.06g; X-ray: L45



211 [K784]

HILT-RING OF GOLD FILIGREE, THREE-PLY TWISTED-BEADED WIRE. Possibly from the upper grip. Cut open and misshapen; a small piece of gold sheet each end, which originally formed a single piece that wrapped the soldered join (i.e. cut in half). *Wear/marks*: light wear. *Set*: possibly a pair with hilt-ring **212**.

(*Note*: found on site with: one silver locking pin **676**: [K786], one fragment of silver sheet **690**: [K785], one fragment die-impressed sheet **606**: [K785], one fragment [K787] of silver bracket **685**)

(*Grid location*: [K784] BA0104, no location)

L. 45mm; Diam. 2mm; Wt 2.29g; X-ray: L49



212 Photography Aleksandria Osinska, Cotswold Archaeology.

212 [K471]

HILT-RING OF GOLD FILIGREE, THREE-PLY TWISTED-BEADED WIRE. Both ends cut at an angle (i.e. cut open) and misshapen. A small piece of gold sheet in the middle of the length wraps the original soldered butt-join. *Wear/marks*: light wear. *Set*: possibly a pair with hilt-ring **211**.

(*Grid location*: [K471] TH220, no location)

L. 70mm; Diam. 2mm; Wt 3.12g; X-ray: L120



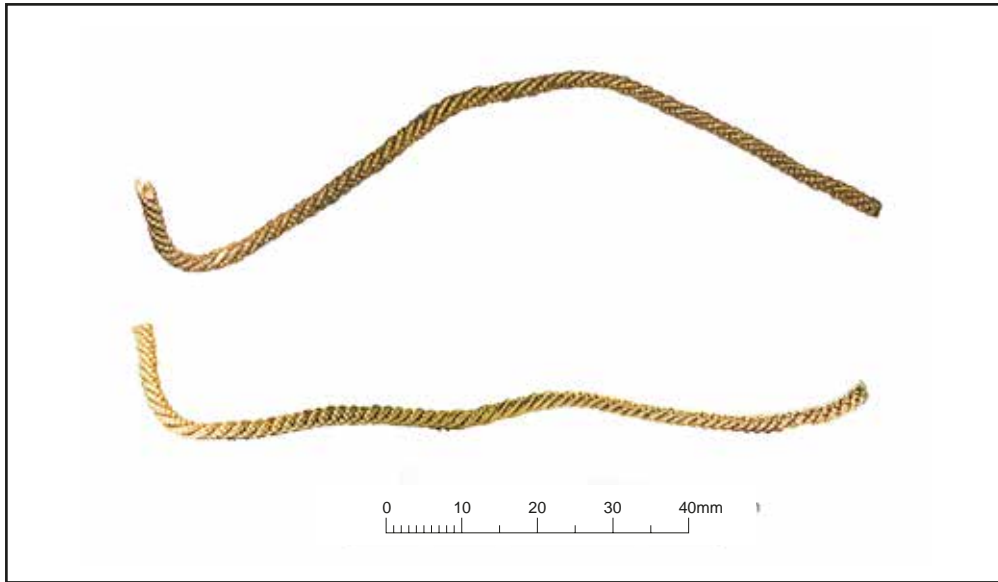
213 Photography Lucy Martin, Cotswold Archaeology.

213 [K1017]

HILT-RING OF GOLD FILIGREE, THREE-PLY TWISTED-BEADED WIRE. Possibly from the upper grip; preserves partly the oval section of the grip. Broken open at the original soldered butt-join in the ring. A fragment of sheet each end is from a patch that covered the join (i.e. torn in half). *Wear/marks*: light wear. One area of beading is pinched flat (two sides), possibly by a tool (?tongs). *Set*: possibly a pair with hilt-ring **214**.

(*Grid location*: [K1017] BA0404, grid L7)

L. 27.5mm; W. 22mm; Diam. 2mm; Wt 2.08g; X-ray: L49



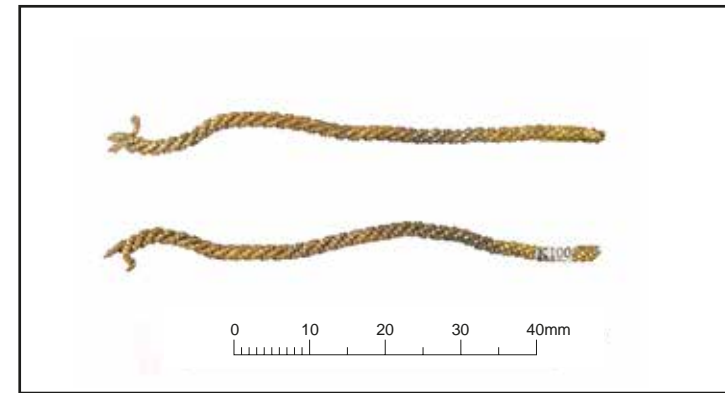
214 Photography Lucy Martin, Cotswold Archaeology.

214 [K971]

HILT-RING OF GOLD FILIGREE, THREE-PLY TWISTED-BEADED WIRE. Possibly from the lower grip. Cut and opened out. *Wear/marks:* light wear. Cut mark on length. *Set:* possibly a pair with hilt-ring **213**.

(*Grid location:* [K971] BA0273, grid M9)

L. 71mm; Diam. 2mm; Wt 2.42g; X-ray: L45



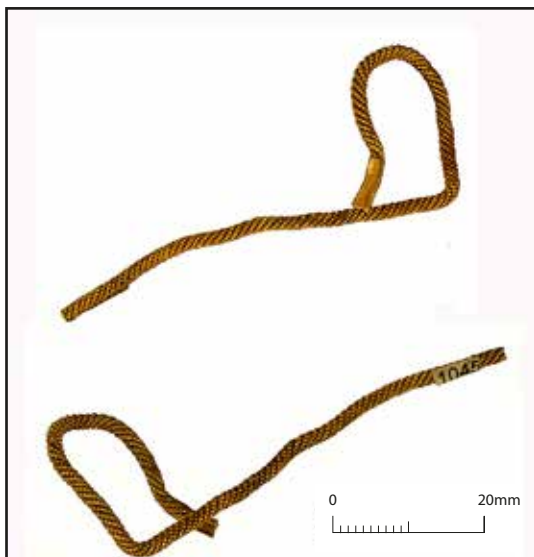
215 Photography Aleksandria Osinska, Cotswold Archaeology.

215 [K100]

HILT-RING OF GOLD FILIGREE, THREE-PLY TWISTED-BEADED WIRE. Straightened out, cut at one end and the wires frayed at the other end; probably incomplete. Fragment of gold sheet one end (probably from a piece that would have covered the original butt-join). *Wear/marks:* light wear.

(*Grid location:* [K100] BA0058, grid K11)

L. 58mm; Diam. 2mm; Wt 1.87g; X-ray: L120



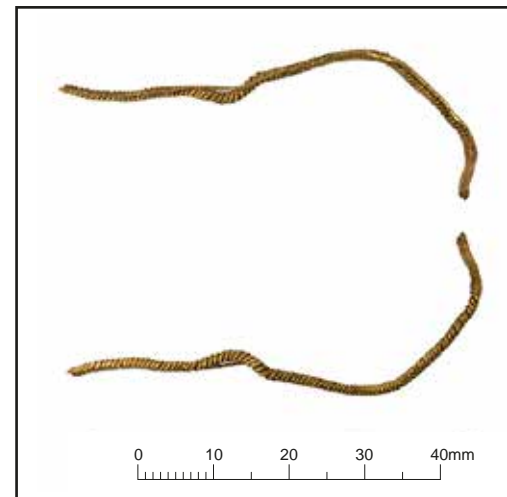
216 Photography Guy Evans, Barbican Research Associates.

216 [K1045]

HILT-RING OF GOLD FILIGREE, THREE-PLY TWISTED-BEADED WIRE. Broken open at the original butt-join in the ring and misshapen; the patch of sheet one end originally covered the join. *Wear/marks*: light wear.

(*Grid location*: [K1045] BA0384, grid M7)

L. 61mm; Diam. 2mm; Wt 4.21g; X-ray: L82, L83



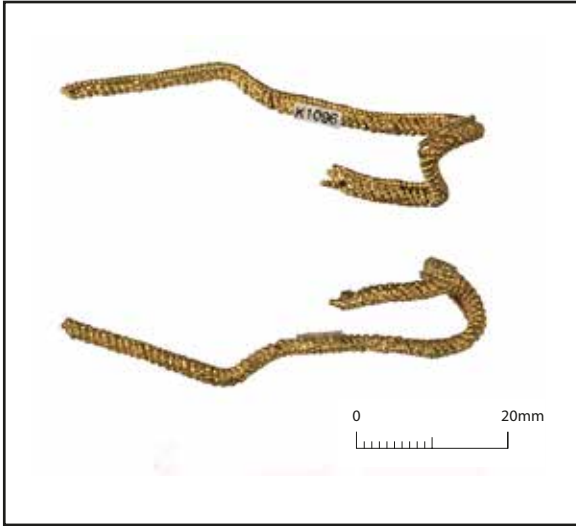
217 Photography Aleksandria Osinska, Cotswold Archaeology.

217 [K1280]

HILT-RING OF GOLD FILIGREE, THREE-PLY TWISTED-BEADED WIRE. Cut open and misshapen. A thinner beaded wire is mounted on one edge. *Wear/marks*: light wear. *Set*: probably a pair with hilt-ring **218**.

(*Grid location*: [K1280] US0155, no location)

L. 53mm; Diam. thicker wire 1.5mm; H. 2mm; Wt 1.49g; X-ray: L45



218–219 Photography Aleksandria Osinska, Cotswold Archaeology.

218 [K1096]

HILT-RING OF GOLD FILIGREE, THREE-PLY TWISTED-BEADED WIRE. Ends broken and misshapen; probably incomplete. A thinner beaded wire is mounted on one edge. Wire flooded by solder in places. *Wear/marks*: light wear. Cut mark one end. *Set*: probably a pair with hilt-ring **217**.

(*Grid location*: [K1096] BA0147, grid M10)

L. 39mm; Diam. thicker wire 2mm; H. 2.5mm; Wt 2.13g; X-ray: L44

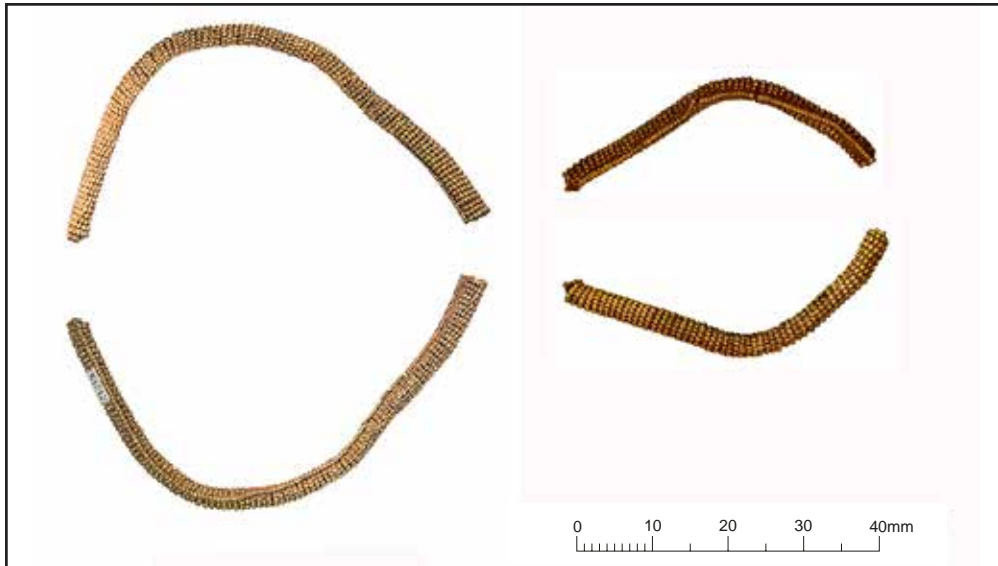
219 [K129]

HILT-RING OF GOLD FILIGREE, WRAPPED-BEADED WIRE. Possibly from the upper grip. Broken open at the original soldered butt-join. A thinner beaded wire (broken, incomplete) was mounted on one edge and a thin strip of sheet is attached to the inside edge. *Wear/marks*: light wear. *Set*: probably a pair with hilt-ring **220**.

(*Note*: found on site with: one fragment [K879] from hilt-collar **87**; hilt-plate **334**; gold mount **420**)

(*Grid location*: [K129] BA0009, grid K10)

L. 39mm; W. 30mm; Diam. wrapped-beaded wire 2.5mm; H. 4mm; Wt 5.94g; X-ray: L123



220 Photography Lucy Martin, Cotswold Archaeology.

220 [K1212, K1343]

HILT-RING OF GOLD FILIGREE, WRAPPED-BEADED WIRE. Possibly from the lower grip. In two fragments, one end of each is cut (i.e. ring cut open); other ends are breaks (recent). A thinner beaded wire runs around the top/bottom edge. The composite wire was formed by wrapping a beaded wire around a thin core wire, which is visible in the end sections (Th. 1mm). *Wear/marks*: light wear. *Set*: probably a pair with hilt-ring **219**.

(*Grid location*: [K1212] BA0323, grid N8; [K1343] TH243, no location)

L. 56.5/41.5mm (joined 71mm); Diam. wrapped-beaded wire 3mm; H. 4mm; Wt 10.00g; X-ray: L48



221 Photography Aleksandria Osinska, Cotswold Archaeology.

221 [K724]

HILT-RING OF GOLD FILIGREE, WRAPPED-BEADED WIRE. Possibly from the upper grip; preserves the general oval section of the grip. *Wear/marks*: light wear. Pinched one edge, where the ring is misshapen, possibly caused by a tool (?tongs). *Set*: hilt-rings **221–224** have a similar wire diameter, possibly they represent two pairs.

(*Note*: found on site with: one fragment of die-impressed silver sheet, **604**: [K15])

(*Grid location*: [K724] BA0206, grid L12)

L. 30mm; W. 23.5mm; Diam. 2mm; Wt 2.71g; X-ray: L123



222–223 Photography Aleksandria Osinska, Cotswold Archaeology.

222 [K366]

HILT-RING OF GOLD FILIGREE, WRAPPED-BEADED WIRE. Probably complete, both ends cut, opened out. The composite wire was formed by wrapping a beaded wire around a thin core wire, which is visible in places (Th. 1mm). *Wear/marks*: light wear. *Set*: hilt-rings **221–224** have a similar wire diameter, possibly they represent two pairs.

(*Grid location*: [K366] TH133, no location)

L. 65mm; Diam. 2mm; Wt 2.46g; X-ray: L138

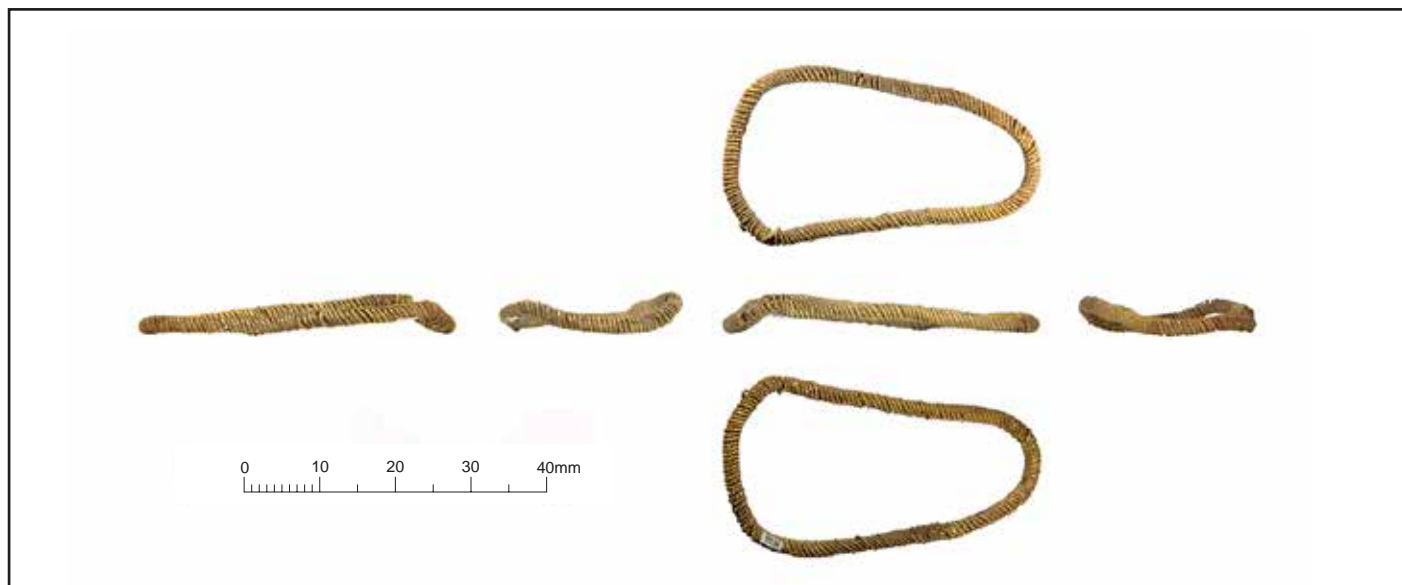
223 [K132]

HILT-RING OF GOLD FILIGREE, WRAPPED-BEADED WIRE. Possibly from the lower grip. Cut open; one end crushed, possibly by a tool. The wrapped-beaded wire has broken and shifted in places, revealing the core wire (Th. 1mm). The wire is fused/melted in places and solder is visible from manufacture. *Wear/marks*: light wear. *Set*: hilt-rings **221–224** have a similar wire diameter, possibly they represent two pairs.

(*Note*: found on site with: hilt-plates **284** and **335**; one fragment of die-impressed silver sheet, **606**: [K2081])

(*Grid location*: [K132] BA0057A, grid J10)

L. 45mm; W. 21mm; Diam. 2mm; Wt 3.06g; X-ray: L120



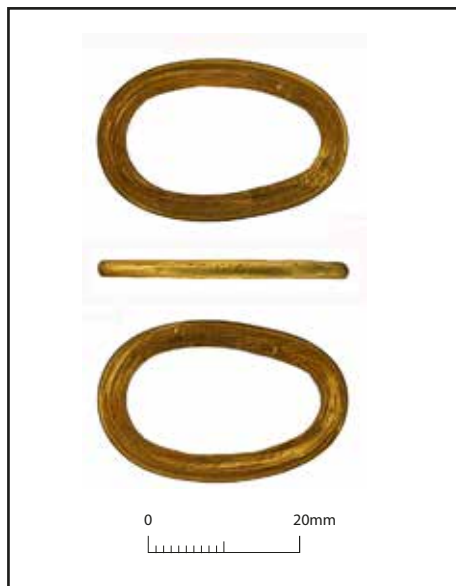
224 Photography Aleksandria Osinska, Cotswold Archaeology.

224 [K1059]

HILT-RING OF GOLD FILIGREE, WRAPPED-BEADED WIRE. Possibly from the lower grip; slightly misshapen, but preserves the general oval section of the grip. The composite wrapped-beaded wire has broken and shifted in places, revealing the core wire (Th. 1mm). *Wear/marks*: light wear. One small area of damage, the wire flattened one edge, possibly caused by a tool (?tongs). *Set*: hilt-rings **221–224** have a similar wire diameter, possibly they represent two pairs.

(*Grid location*: [K1059] BA0153, grid M8)

L. 42mm; W. 24mm; Diam. 2mm; Wt 4.20g; X-ray: L49



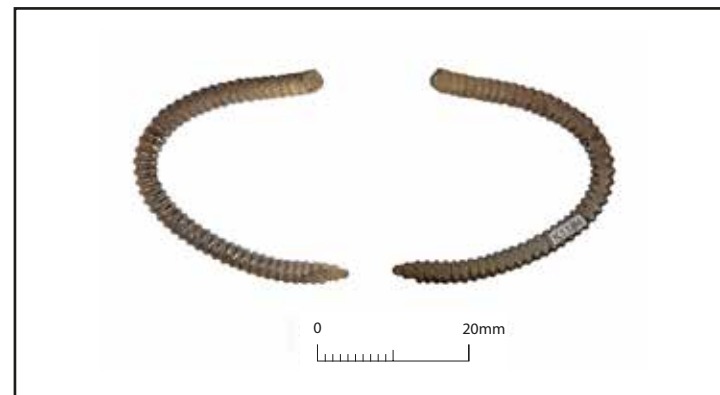
225 Photography Guy Evans, Barbican Research Associates.

225 [K690]

PLAIN HILT-RING CAST IN GOLD. Flat with an egg-shaped section. *Wear/marks*: light wear. *Set*: part of a suite for a seax/knife hilt with pommel **55**, hilt-collars **167–168** and cap-fitting **169**.

Grid location: [K690] TH084, no location)

L. 33mm; W. 22mm; H. 2.5mm Wt 7.77g; X-ray: L6



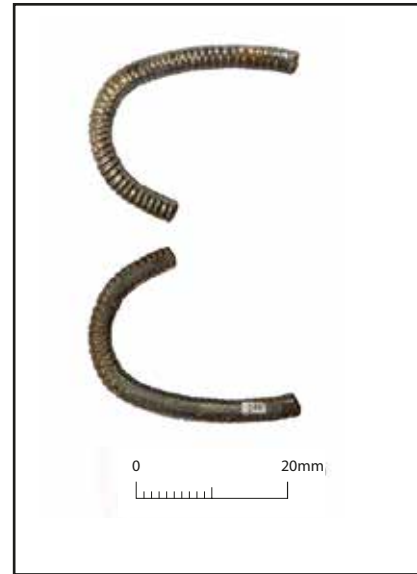
226 Photography Aleksandria Osinska, Cotswold Archaeology.

226 [K1194]

HILT-RING CAST IN SILVER, IMITATING THICK BEADED WIRE. Possibly from the upper grip. Half only, two rejoined fragments (recent break), ends cut at an angle. No gilding. Cast/filed flat on one edge, probably so it was flush with hilt-guard/plate. *Wear/marks*: light wear. *Set*: possibly a pair with hilt-ring **227**.

Grid location: [K1194] BA0315, grid K13)

L. 34mm; W. 29mm Diam. 3 mm; Wt 4.05g; X-ray: L48



227–229 Photography Aleksandria Osinska, Cotswold Archaeology.

227 [K1205]

HILT-RING CAST IN SILVER, IMITATING THICK BEADED WIRE. Possibly from the lower grip. Incomplete, about half only, one end cut at an angle. No gilding. Cast/filed flat on one edge, probably so it was flush with hilt-guard/plate. *Wear/marks*: light wear. *Set*: possibly a pair with hilt-ring **226**.

(*Grid location*: [K1205] BA0319, grid N8)

L. 45mm; W. 21mm; Diam. 3mm; Wt 3.65g; X-ray: L48

228 [K246]

CURVED FRAGMENT FROM A HILT-RING CAST IN SILVER WITH GILDING, IMITATING THICK BEADED WIRE. Both ends broken. Cast/filed flat on one edge, probably so it was flush with a hilt-guard/plate. *Wear/marks*: light wear. Beading slightly flattened on another edge, possibly from contact with other hilt-fittings. *Set*: possibly a pair with hilt-ring **229**.

(*Grid location*: [K246] TH179, no location)

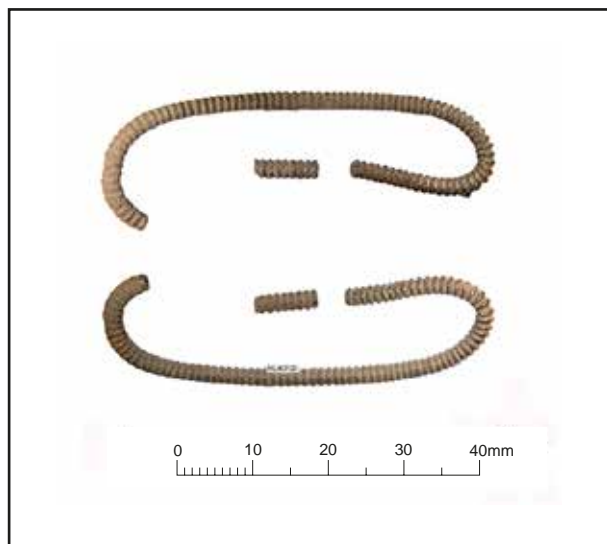
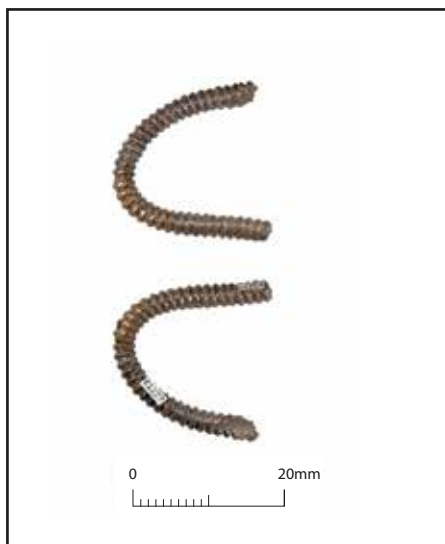
L. 23mm; W. 20.5mm; Diam. 3mm; Wt 1.68g; X-ray: L49

229 [K1368]

CURVED END FRAGMENT OF A HILT-RING CAST IN SILVER WITH GILDING, IMITATING THICK BEADED WIRE. *Wear/marks*: moderate wear. Beading slightly flattened on one edge, possibly from contact with a hilt-guard/plate. *Set*: possibly a pair with hilt-ring **228**.

(*Grid location*: [K1368] TH244, no location)

L. 17mm; Diam. 3mm; Wt 1.43g; X-ray: L48



230–231 Photography Aleksandria Osinska, Cotswold Archaeology.

230 [K902, K1227]

HILT-RING CAST IN SILVER WITH GILDING, IMITATING THICK BEADED WIRE. Half only, found in two fragments (rejoined), one end cut at an angle [K1227]. *Wear/marks*: light wear.

(*Note*: fragment [K902] part of finds group BA1038)

(*Grid location*: [K902] BA1038, no location; [K1227] BA0135, grid L9)

L. 22mm; Diam. 3mm; Wt 2.88g; X-ray: L48, L64

231 [K472]

HILT-RING CAST IN SILVER, IMITATING THICK BEADED WIRE. Possibly from the lower grip; preserves the general oval section of the grip. Found in two fragments (recent break); missing a small section. No traces of gilding. *Wear/marks*: light wear. Slight flattening of the beading on the inside and one other edge, probably from contact with a hilt-guard/plate, the grip or other fittings.

(*Grid location*: [K472] TH240, no grid location)

L. 49mm; W. 15mm; Diam. 2.5mm; Wt 2.98g; X-ray: L49

232–3 For images see database

232 [K1498, K1840, K2156]

HILT-RING CAST IN SILVER WITH GILDING, IMITATING THICK BEADED WIRE. Incomplete, about half only, found in five fragments. Cast flat on the inside edge, probably so it was flush with the grip. *Wear/marks*: moderate wear. The beading is slightly flattened on one edge, possibly from contact with a hilt-guard/plate. *Set*: possibly the same ring or a pair with hilt-ring **233**.

(*Note*: [K1498] part of soil block 20; [K2156] part of soil block 15. Fragment [K1840] found with: hilt-collar **180**; hilt-plate **322**; mount **522**; one silver sheet fragment, **690**: [K1841])

(*Grid location*: [K1498], [K1840=K296] TH158, [K2156=K1481], no locations)

L. 30mm; H. 2mm; Th. 1.5mm; Wt 0.76g; X-ray: L64, L103, L121

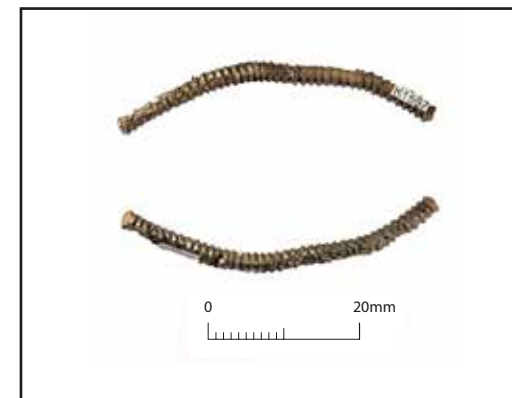
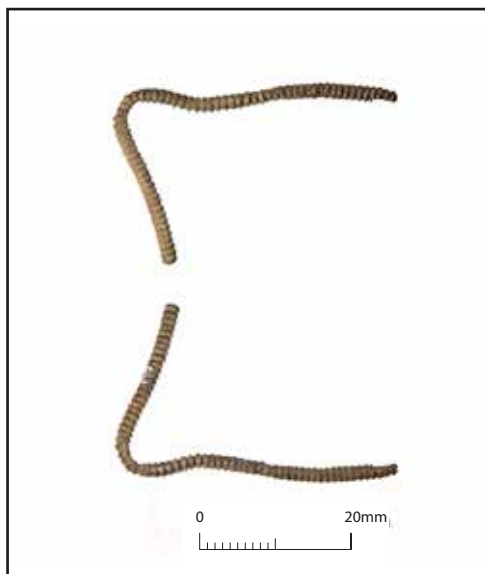
233 [K1481, K1746]

TWO SMALL CURVED FRAGMENTS OF CAST SILVER WITH GILDING, IMITATING THICK BEADED WIRE, PROBABLY FROM A HILT-RING. (The fragments have now been joined.) *Wear/marks*: flattened, possibly by a tool (?tongs). *Set*: possibly the same ring or a pair with hilt-ring **232**.

(*Note*: [K1481] part of soil block 15; [K1746] part of soil block 9)

(*Grid location*: [K1481] soil block 15, [K1746] soil block 9, no locations)

L. 13mm; H. 2mm; Th. 1mm; Wt 0.20g; X-ray: L100, L103



234–236 Photography Aleksandria Osinska, Cotswold Archaeology.

234 [K183]

CURVED FRAGMENT OF A HILT-RING CAST IN SILVER, IMITATING THICK BEADED WIRE. One end cut. No traces of gilding. Beading cast/filed flat on the inside edge, probably so it was flush with the grip and a hilt-guard/plate. *Wear/marks*: moderate wear.

(*Grid location*: [K183] US0049, no location)

L. 19mm; Diam. 2.5mm; Wt 0.60g; X-ray: L48

235 [K396]

HILT-RING CAST IN SILVER, IMITATING THICK BEADED WIRE. Incomplete, both ends broken, and misshapen. No traces of gilding. *Wear/marks*: light wear. Cut marks.

(*Grid location*: [K396] TH146, no location)

L. 35mm; Diam. 2mm; Wt 0.99g; X-ray: L45

236 [K1597, K1635]

CURVED PIECE FROM A HILT-RING CAST IN SILVER, IMITATING THICK BEADED WIRE. In two rejoined fragments (recent break). No traces of gilding. Cast/filed flat on one edge, probably so it was flush with the hilt-guard/plate. *Wear/marks*: moderate wear. Multiple cut marks.

(*Note*: [K1597] part of soil block 1; [K1635] part of soil block 17)

(*Grid location*: [K1597]; [K1635] no grid locations)

L. 39mm; Diam. 2.5mm; Wt 1.68g; X-ray: L48

237 [K1835]

SLIGHTLY CURVED FRAGMENT OF CAST SILVER WITH GILDING, IMITATING THICK BEADED WIRE, PROBABLY FROM A HILT-RING. Cast/filed flat on the inside edge, probably so it was flush with the grip. *Wear/marks*: light wear. Slight flattening of the beading on one edge, possibly from contact with a hilt-guard/plate.

(*Note*: attached by soil with: pommel fragments **61** and **62**, hilt-plate **317**, one gold boss, **637**: [K1831], one silver rivet, **673**: [K1834], two silver reeded strip fragments, **613**: [K1836], seventeen very small fragments silver sheet, **690**: [K1837])

(*Grid location*: [K1835=K295] TH165, no location)

L. 18mm; Diam. 2mm; Wt 0.30g; X-ray: L39, L41

238 [K1935]

CURVED FRAGMENT FROM A HILT-RING IN CAST SILVER WITH GILDING, IMITATING THICK BEADED WIRE. Cast/filed flat on the inside edge, probably so it was flush with the grip.

(*Note*: attached by soil with: mount **438**, nine fragments of reeded strip, **613**: [K1934]; one silver nail, **674**: [K1936]; five small fragments of silver sheet, **690**: [K1937])

(*Grid location*: [K1935=K833] SCC0021, no location)

L. 15.5mm; Diam. 2mm; Wt 0.31g; X-ray: L135

239 [K756]

SMALL CURVED FRAGMENT OF A HILT-RING CAST IN SILVER, IMITATING THICK BEADED WIRE. No traces of gilding. Cast/filed flat on the inside edge, probably so it was flush with the grip. *Wear/marks*: light wear.

(*Note*: [K756] part of finds group BA0203)

(*Grid location*: [K756] BA0203, no location)

L. 13.5mm; H. 2.5 mm; Wt 0.41g; X-ray: L48

240 [K267]

SMALL CURVED FRAGMENT OF CAST SILVER, IMITATING THICK BEADED WIRE, PROBABLY FROM A HILT-RING. No traces of gilding. *Wear/marks*: light wear. The beading is slightly flattened on one edge, possibly from contact with a hilt-guard/plate.

(*Grid location*: [K267] TH179, no location)

L. 8mm; Diam. 2mm; Wt 0.12g; X-ray: L64

241 [K511, K1705]

TWO SMALL FRAGMENTS OF A HILT-RING IN CAST SILVER WITH GILDING, IMITATING THICK BEADED WIRE. No join, but probably from the same ring. Cast/filed flat on the inside edge, probably so it was flush with the grip. *Wear/marks*: moderate wear.

(*Note*: [K1705] part of soil block K795)

(*Grid location*: [K511] TH215, [K1705], no locations)

L. 15mm; H. 2mm; Th. 2mm; Wt 0.18g; X-ray: L95, L105

242 [K1571, K1695, K2018]

FOUR FRAGMENTS OF CAST COPPER ALLOY WITH GILDING, IMITATING THICK BEADED WIRE, POSSIBLY FROM ONE HILT-RING OR A PAIR. Two join [K1695]. Material confirmed by XRF. Cast/filed flat on the inside edge, so it was flush with the grip. *Wear/marks*: not possible to determine.

(*Note*: [K1571] part of soil block 6; [K1695] part of soil block K512; [K2018] part of soil block 15)

(*Grid location*: [1571] , [K1695], [K2018=K1488], no locations)

L. largest 10mm; Diam. 2mm; Wt 0.12g; X-ray: L105, L106, L140



Staffordshire Hoard Catalogue

The catalogue was produced by the project

Contextualising Metal-Detected Discoveries: Staffordshire Anglo-Saxon Hoard

Historic England Project 5892

The Staffordshire Hoard is owned by the Birmingham City Council and the Stoke-on-Trent City Council and cared for on their behalf by Birmingham Museums Trust and The Potteries Museum & Art Gallery.

The Staffordshire Hoard research project was conducted by Barbican Research Associates Ltd and funded by Historic England and the owners.

