



***Staffordshire Hoard
Catalogue***

**The Catalogue
Part 7: Pyramid and button fittings,
and personal items**



**Text and Drawings: Chris Fern
Photographs: Aleksandra Osinska,
Lucy Martin**

2017

This catalogue forms part of
The Staffordshire Hoard: an Anglo-Saxon Treasure
edited by C. Fern, T. Dickinson and L. Webster
and published by the Society of Antiquaries of London

Introduction

This pdf catalogue provides text entries, together with photographs for the majority of the objects (scale 1:1 in most instances). In addition, line drawings accompany many of those with complex decoration, which offer interpretations of the art. The full catalogue for each item can be found in the database, along with more photos in many cases.

In each entry the catalogue number is in **bold** font, with the original [*K-number*] given in italics and square brackets. Where a catalogue entry is composed of more than one *K-number*, in the database all the details pertaining to it are attached to the first *K-number* in the sequence. (Additional images of individual *K-number* fragments/objects within groups will be found in the specific *K-number* database entry.) The weight measurement for catalogue entries formed of more than one *K-number* fragment/object is an aggregate of all the pieces that make up the whole.

The *Note* entry provides select details of other fragments/objects with which the piece was found, but it was not practical to do this for all *K-number* fragments/objects, where they had been parts of large fragment groups (e.g. soil blocks), or where the catalogue entry comprises many fragments: full details of all associations between fragments/objects are in e-Tables 2 and 3.

The *Grid location* entry gives information about the original find position of fragments/objects (by *K-number*) found within the 1m x 1m grid established during the Birmingham Archaeology excavations (2009). The finds made by Archaeology Warwickshire (2012) have also been related to this grid, but note, as these finds came from backfilled and ploughed soil, they are not directly comparable to the former. The alpha-numeric prefix given to finds relates to the several recording systems used for the different phases of recovery prior to the establishing of the *K-number* system by Kevin Leahy, and are as follows:

TH ('Terry Herbert'): the number series originally applied to the metal detectorist's finds (these have no locations).

SCC: Staffordshire County Council emergency test pit.

BA: Birmingham Archaeology excavation.

All information and images are copyright of Barbican Research Associates Ltd unless otherwise stated.



572–573 Photography Aleksandra Osinska, Cotswold Archaeology.

572 [K377]

PYRAMID-FITTING IN GOLD WITH GARNET AND GLASS CLOISSONNÉ. Slightly twisted, a small number of fractured or sunken garnets. Body and cellwork constructed of sheet metal, with an attachment bar on the reverse. *Cloisonné*: the geometric design on each of the four sides is the same. A central inverted triangular frame partitions the cellwork: the resulting spaces are filled with stepped forms, together with a single mushroom form, and three triangular settings of opaque blue glass. A single flat square garnet is set at the apex. The garnets at the edges are shaped to fit and those at the corners of the apex were cut in three planes; all are a slightly different purple-red colour, to contrast with the orange-red flat stones. All the garnets are backed by gold cross-hatched foils of 'standard' type. *Interior/reverse*: hollow. The upper surface of the attachment bar is rounded. *Wear/marks*: light wear. *Set*: pair with fitting 573.

(Grid location: [K377] TH142, no location)

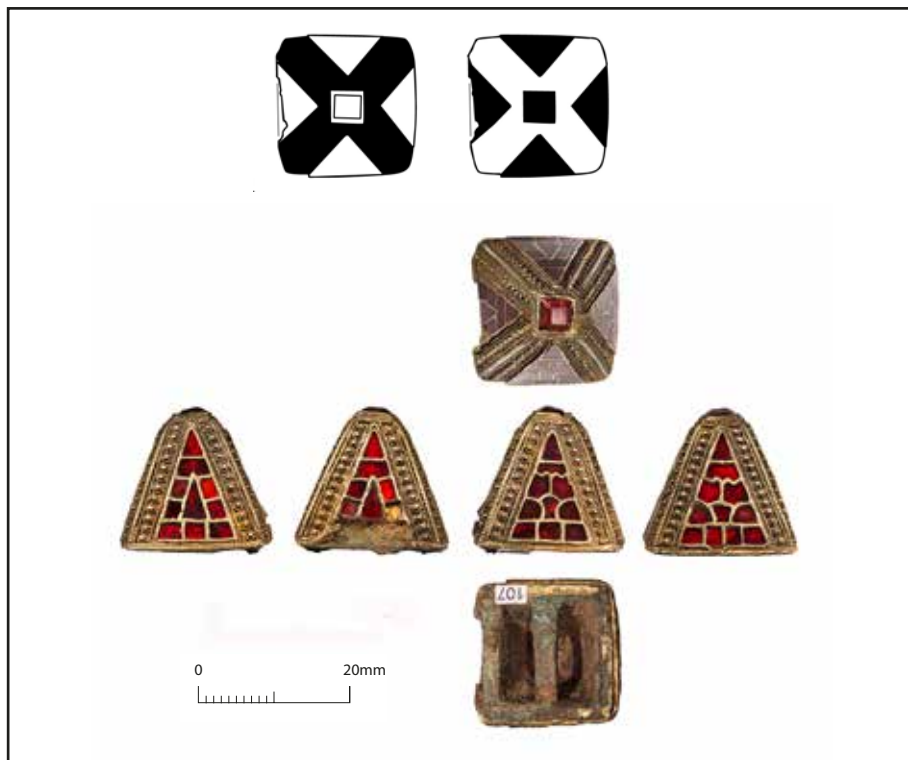
L. 21mm; W. 21mm; H. 13.5mm; Th. base 2mm; W. bar 3mm; Wt 13.27; X-ray: L14, L15

573 [K462]

PYRAMID-FITTING IN GOLD WITH GARNET AND GLASS CLOISSONNÉ. Some fractured garnets. Body and cellwork constructed of sheet metal, with an attachment bar on the reverse. *Cloisonné*: the geometric design on each of the four sides is the same. A central inverted triangular frame partitions the cellwork: the resulting spaces are filled with stepped forms, together with a single mushroom form, and three triangular settings of opaque blue glass. A single flat square garnet is set at the apex. The garnets at the edges are shaped to fit and those at the corners of the apex were cut in three planes; all are a slightly different purple-red colour, to contrast with the orange-red flat stones. All the garnets are backed by gold cross-hatched foils of 'standard' type. *Interior/reverse*: hollow. The upper surface of the attachment bar is rounded (Th. 2.5mm). *Wear/marks*: light wear. *Set*: pair with fitting 572.

(Grid location: [K462] TH222, no location)

L. 21mm; W. 21mm; H. 13.5mm; Th. edge 1.5mm; Wt 13.11g; X-ray: L14, L15



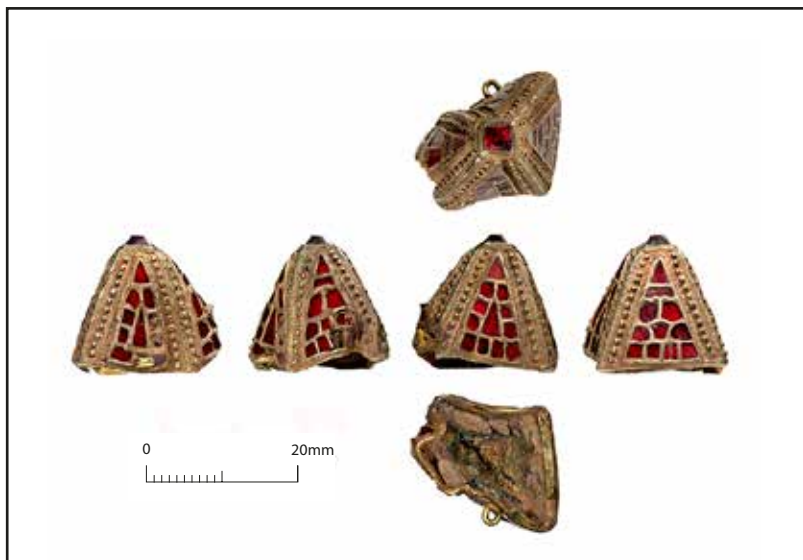
574 Photography Aleksandra Osinska, Cotswold Archaeology.
 Drawing Chris Fern.

574 [K107]

PYRAMID-FITTING IN GOLD WITH FILIGREE AND GARNET CLOISSONNÉ. A small part of one side is missing at the lower edge, with a few cells/garnets lost (from removal of its attachment loop, see 575). Constructed of sheet metal over a cast copper-alloy core. *Gem-setting*: a square table-cut garnet is set at the apex in a plain bezel with a filigree frame comprised of two beaded wires. *Cloisonné*: each side has a shallow triangular panel inlaid with flat red garnets. Two slightly different designs repeat on adjoining sides (rather than alternating as on 575). One pattern comprises a central triangle with a border of rectilinear cellwork; the other design includes stepped, curved and rectilinear elements. All the stones are backed by cross-hatched gold foils of 'standard' type. *Filigree*: the pyramid edges have bands of collared granules framed by double/triple beaded wires. *Interior/reverse*: hollow; a bar for attachment was cast with the copper-alloy core (Th. 2.5mm). *Wear/marks*: moderate wear to the filigree at the edges. *Set*: pair with fitting 575.

(Grid location: [K107] BA0017, no location)

L. 18.5mm; W. 18mm; H. 18mm; Th. copper-alloy base 3mm; Wt 9.27g; X-ray: L14, L15



575 Photography Aleksandra Osinska, Cotswold Archaeology. .

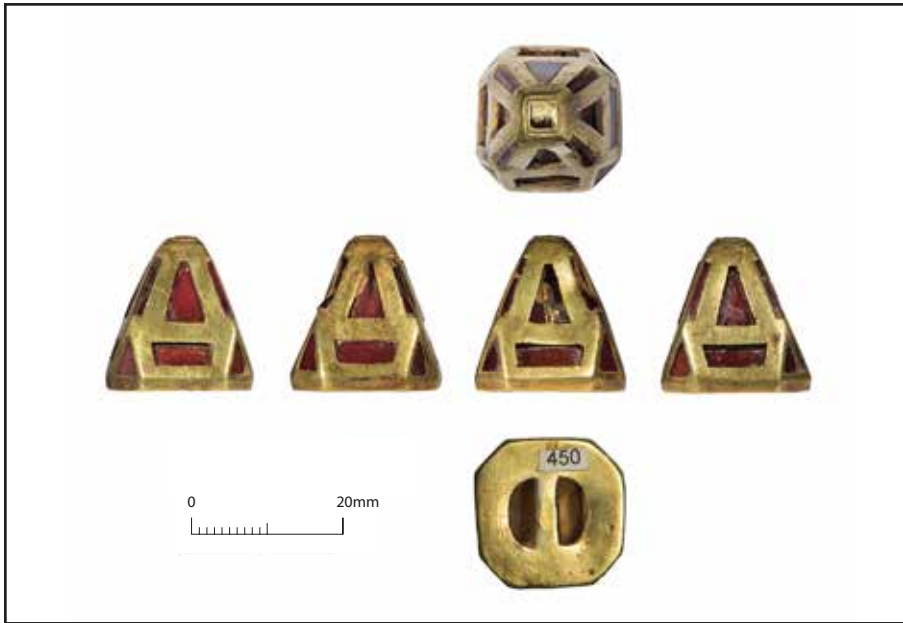
575 [K1201]

PYRAMID-FITTING IN GOLD WITH FILIGREE AND GARNET CLOISONNÉ. Complete, but missing part of its copper-alloy core, misshapen, and one garnet lost. Constructed of sheet metal with a small attachment loop at the base on one side. *Gem-setting*: a square table-cut garnet is set at the apex in a plain bezel with a filigree frame of two beaded wires. *Cloisonné*: each side has a shallow triangular panel inlaid with flat red garnets. Two slightly different designs repeat alternately (rather than adjoining as on **574**). One pattern comprises a central triangle with a border of rectilinear cellwork; the other design includes stepped, curved and rectilinear elements. All the stones are backed by cross-hatched gold foils of ‘standard’ type. *Filigree*: the pyramid edges have bands of collared granules framed by double/triple beaded wires. *Interior/reverse*: part of the cast copper-alloy core remains in the hollow interior. *Wear/marks*: moderate wear to the filigree at the edges. *Set*: pair with fitting **574**.

(Note: gold mount **417** from soil in interior)

(Grid location: [K1201] BA0317, grid N8)

L. 18mm; W. 20mm; H. 18mm; Wt 8.92g; X-ray: L14, L15



576–577 Photography Aleksandra Osinska, Cotswold Archaeology.

576 [K450]

PYRAMID-FITTING IN GOLD WITH GARNET AND GLASS CLOISSONNÉ. Complete, multiple stones sunken. Made from thick sheet or possibly cast. Base has an attachment bar with rounded openings either side. *Gem-setting*: the empty square setting at the apex had a millefiori, translucent glass inlay, found loose in conservation; it shows a red cross on a blue background. *Cloisonné*: a bold pattern of triangular and trapezoidal garnets decorates each side, with smaller triangular stones at the chamfered basal edges; edge-cut stones were used for the long edges. The garnets are backed by cross-hatched gold foils of ‘boxed 3×3’ type; the glass stone at the apex was backed by a foil of ‘standard’ type. *Interior/reverse*: hollow. *Wear/marks*: light wear. *Set*: pair with fitting 577.

(Grid location: [K450] TH219, no location)

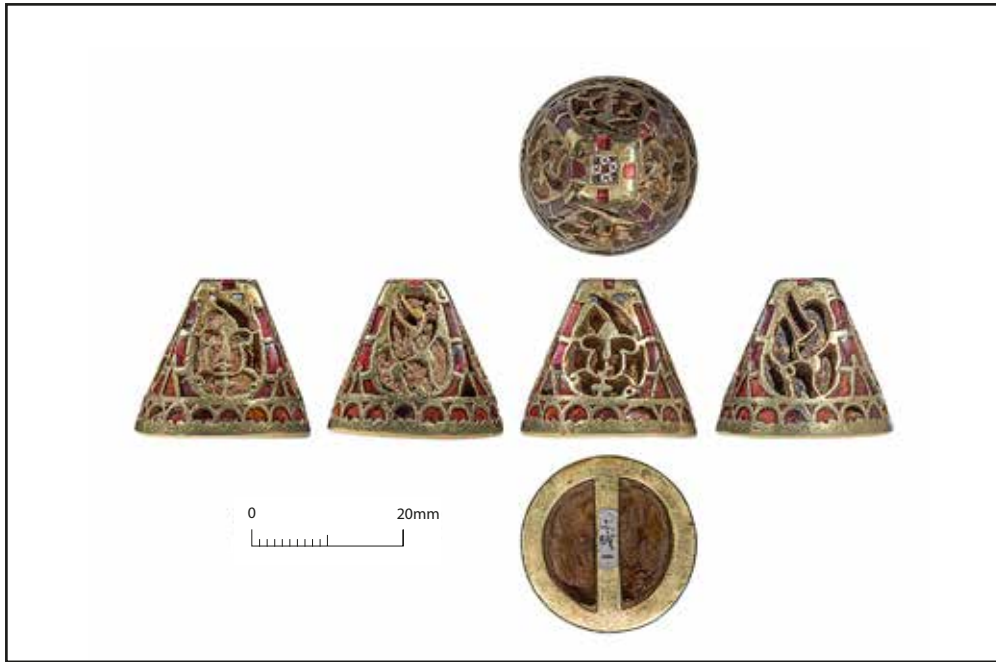
L. 20mm; W. 20mm; H. 21.5mm; Wt 15.26g; X-ray: L12, L13

577 [K565]

PYRAMID-FITTING IN GOLD WITH GARNET AND GLASS CLOISSONNÉ. Damaged on three sides; missing some stones/foils. Empty square gem-setting at the apex (cf. 576); it retains a foil. Base, misshaped, with an attachment bar with rounded openings either side. *Cloisonné*: a bold pattern of triangular and trapezoidal garnets each side, with smaller triangular stones at the chamfered basal edges; edge-cut stones were used for the long edges. The garnets are backed by cross-hatched gold foils of ‘boxed 3×3’ type, with a foil at the apex of ‘standard’ type. *Interior/reverse*: hollow. *Wear/marks*: light wear. *Set*: pair with fitting 576.

(Grid location: [K565] TH006, no location)

L. 20mm; W. 18mm; H. 21.5mm; Wt 15.30g; X-ray: L13, L29



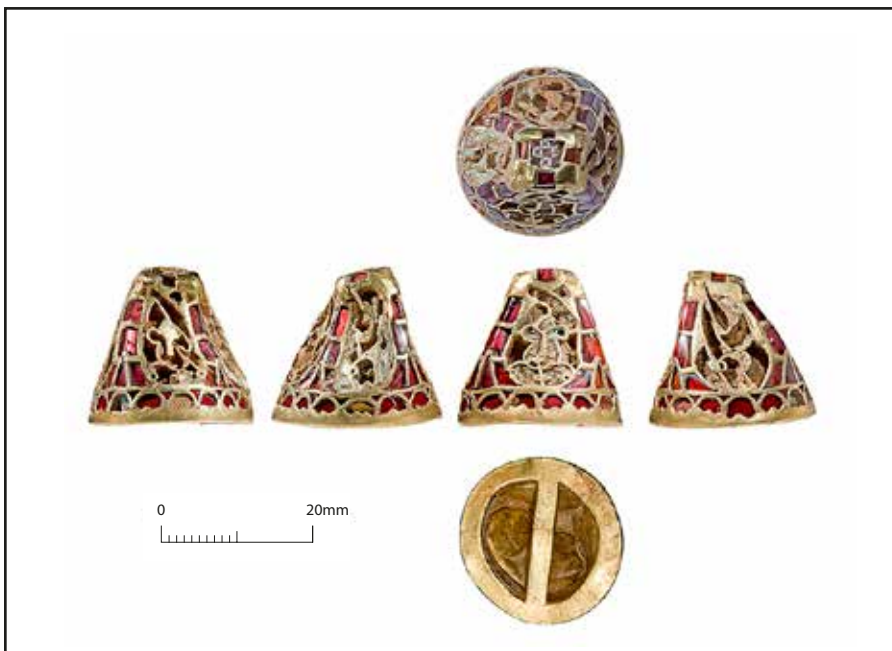
578 Photography Lucy Martin, Cotswold Archaeology.

578 [K451]

PYRAMID-FITTING IN GOLD WITH GARNET AND GLASS CLOISSONNÉ. Complete, a few garnets fractured or sunken. Constructed of sheet metal with a round, possibly cast base. *Style II*: the sides have alternate animal designs. Two sides show a serpent with small round eyes and an interlaced body. The other design can be read either as a helmeted head or as two confronted zoomorphs with eyes and 'tails' that cross at the peak of the helmet. The small circular cells for the eyes might have held tiny glass inlays (cf. **167–168**, **511–512**, **514–515**). The cellwork forming these designs has remains of an unidentified decayed inlay, in contrast with the surrounding garnet inlays. *Cloisonné*: the garnets at the edges are cut with faceted surfaces, including unusual bifid forms; they are a purple-red colour, to contrast with the flat orange-red garnets that form a border around the base; these are also rare semi-circular and triangular forms. All the garnets are backed by cross-hatched gold foils of 'standard' type. A flat square of millefiori glass is set at the apex, of opaque red and white checks, with tiny crosses in the white squares. *Interior/Reverse*: the interior is hollow; a bar for attachment is at the base. *Wear/marks*: light wear. *Set*: pair with fitting **579**.

(*Grid location*: [K451] TH231, no location)

Diam. 23–23.5mm; H. 21mm; Wt 16.51g; X-ray: L12, L13



579 Photography Lucy Martin, Cotswold Archaeology.

579 [K1166]

PYRAMID-FITTING IN GOLD WITH GARNET AND GLASS CLOISSONNÉ. Misshapen, possibly by an impact to one side, a few garnets fractured, lost or sunken. Constructed of sheet metal with a round, possibly cast base. *Style II*: the sides have alternate animal designs. Two sides show a serpent with small round eyes and an interlaced body. The other design can be read either as a helmeted head or as two confronted zoomorphs with eyes and ‘tails’ that cross at the peak of the helmet. The small circular cells for the eyes might have held tiny glass inlays (cf. 167–168, 511–512, 514–515). The cellwork forming these designs has remains of an unidentified decayed inlay, in contrast to the surrounding garnet inlays. *Cloisonné*: the garnets at the edges are cut with faceted surfaces, including unusual bifid forms; they are a purple-red colour, to contrast to the flat orange-red garnets that form a border around the base; these are also rare semi-circular and triangular forms. All the garnets are backed by cross-hatched gold foils of ‘standard’ type. A flat square of millefiori glass is set at the apex, of opaque red and white checks, with tiny crosses in the white squares. *Interior/Reverse*: the interior is hollow; a bar for attachment is at the base. *Wear/marks*: light wear. *Set*: pair with fitting 578.

(Grid location: [K1166] BA0412, grid K7)

Diam. 23–23.5mm; H. 21mm; Wt 16.52g; X-ray: L12, L13



580 Photography Aleksandra Osinska, Cotswold Archaeology.

580 [K302]

PYRAMID-FITTING IN CAST SILVER WITH GOLD MOUNTS, WITH FILIGREE AND GARNET CLOISSONNÉ. Complete, except for one broken tear-drop garnet and one lost garnet at the apex. The cast edging imitates beaded wire (but there is no evidence the silver body of the mount was gilded). Each side has a gold trapezoidal mount of flat gold sheet, fixed by three silver rivets, the heads gilded. *Cloissonné*: the apex is decorated with a shallow rectangular frame divided into triangular cells, filled with flat red garnets, with a 'X' shape formed by the cellwork. At the centre of each mount is a triform arrangement of tear-drop cabochon garnets, in plain bezels with filigree collars. All the stones, including at the apex, are backed by cross-hatched gold foils of 'standard' type (exposed where stones are missing/broken). *Filigree*: between the arms of the garnet triforms are neat conical spirals of beaded wire, three on each mount; scrollwork fills the remaining space on each mount, S-scrolls predominating, formed again of beaded wire; the same wire type forms an inner frame to each mount and frames the bezels of the triform gem-settings; the outer edge of each mount is framed by thicker, two-ply twisted-beaded wire. *Interior*: hollow except for the solid bar with a rounded interior edge for attachment (Th. 3.5mm); the stubs of the rivets fixing the mounts are visible. *Wear/marks*: light wear. *Set*: pair with fitting **581**.

(*Grid location*: [K302] TH161, no location)

L. 24mm; W. 24mm; H. 19mm; Th. edge 2mm; Wt 18.07g; X-ray: L14, L15



581 Photography Aleksandra Osinska, Cotswold Archaeology. .

581 [K382, K676, K849, K999, K1254]

PYRAMID-FITTING OF CAST SILVER WITH GOLD MOUNTS, WITH FILIGREE AND GARNET CLOISSONNÉ. Found in five fragments; all four original gold mounts survive; one is torn. More than half of the cast silver body is missing. The mounts retain most of the silver rivets that attached them. The ornament and manufacture was essentially identical to that for complete fitting **580**. *Wear/marks*: light wear. *Set*: pair with fitting **580**.

(*Grid location*: [K999] BA0290, grid M14; [K1254] BA0343, grid N10. No locations: [K382] TH112, [K676] TH062, [K849] SCC0017)

W. 21mm; H. 19mm; Th. base 2mm; Wt 11.24g; X-ray: L22, L29, L80, L124



582–584 Photography Aleksandra Osinska, Cotswold Archaeology.

582 [K675]

BUTTON-FITTING IN GOLD AND GARNET CLOISSONNÉ. Missing two garnets/foils. Manufactured from sheet metal with a dog-tooth bezel and filigree collar. *Cloisonné*: the geometric design has stepped forms at the centre with an outer ring of hoof-shaped and pointed garnets, all cut with a slightly curved surface. The stones are backed by gold foils with cross-hatched patterns of ‘standard’ type. *Filigree*: the collar is formed of a three-ply twisted-beaded wire with flanking beaded wires. *Reverse*: loop fitting (L. 11mm). *Wear/marks*: light wear. *Set*: pair with **583**. Fits in bead **584**.

(*Grid location*: [K675] TH082, no location)

Diam. 14mm; H. 17mm; Wt 3.27g; X-ray: L22

584 [K764]

BARREL-SHAPED STONE BEAD. Cream-coloured, tinted orangey-red (probably stained by the soil environment). Lathe turned and drilled (Diam. hole 5mm), with concave ends. The stone is probably a type of microcrystalline/cryptocrystalline quartz, possibly magnesite (not confirmed by analysis). *Set*: fits **582**.

(*Grid location*: [K764] BA0085, no location)



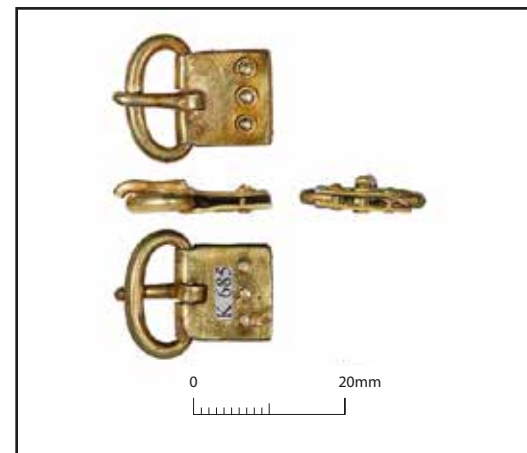
583 [K1425]

BUTTON-FITTING IN GOLD AND GARNET CLOISSONNÉ. Small dent on one side and the apex has suffered a slight impact. No stones lost; two sunken. Manufactured from sheet metal with a dog-tooth bezel and filigree collar. *Cloisonné*: the geometric design has stepped forms at the centre with an outer ring of hoof-shaped and pointed garnets, all cut with a slightly curved surface. The stones are backed by gold foils with cross-hatched patterns of ‘standard’ type. *Filigree*: the collar is formed of a three-ply twisted-beaded wire with flanking beaded wires. *Reverse*: loop fitting (L. 8.5mm) with washers. *Wear/marks*: light wear. *Set*: pair with **582**.

(*Note*: [K1425] part of soil block 4)

(*Grid location*: [K1425], no location)

Diam. 14mm; H. 15mm; Wt 3.19g; X-ray: L22



585–586 Photography Aleksandra Osinska, Cotswold Archaeology. .

585 [K144]

SMALL BUCKLE IN GOLD WITH A RECTANGULAR BACK-PLATE. Loop and tongue cast separately; back-plate (L. 10mm; W. 7.5mm) formed of sheet metal folded around the axis of the loop; a hole was cut in the plate for the hinge of the tongue; two gold rivets. Undecorated, except for two lines at the back-end of the tongue. *Wear/marks*: light wear; light scratches and nicks.

(*Note*: found on site with a fragment of cloisonné cell-wall, **683**: [K121], and a gold cross-hatched foil, **695**: [K1791])

(*Grid location*: [K144] US0010, no location)

L. 16mm; W. loop 12mm; Th. 4mm; Wt 2.03g; X-ray: L77

586 [K685]

SMALL BUCKLE IN GOLD WITH A RECTANGULAR BACK-PLATE. Loop and tongue cast separately; back-plate (L. 12.5mm; W. 12mm) formed of sheet metal folded around the axis of the loop; a hole was cut in the plate for the hinge of the tongue. Three gold rivets with bossed heads and filigree collars of beaded wire are set on the back-plate; a band is lightly incised across its width also, formed by two faint parallel lines. *Wear/marks*: light wear; light scratches and nicks. Filigree wires show some flattening.

(*Grid location*: [K685] TH061, no location)

L. 21mm; W. loop 17mm; Th. 5mm; Wt 5.40g; X-ray: L77



587 Photography Lucy Martin, Cotswold Archaeology.

587 [K957, K959]

BUCKLE IN SILVER WITH GOLD FILIGREE DECORATION. Loop [K959] and tongue [K957] cast separately (and found separately); the tongue has a broken oval 'tongue-shield'; the hinge of the tongue was soldered to the underside of the shield. The tongue-shield (W. 11mm; Th. 2mm) probably once had an inlay. Found with the loop were remains of a back-plate of silver sheet, most likely of rectangular form originally. It is decorated one side with a framework of triangular punchwork, and the same punch was used to edge the flat underside of the loop. *Filigree*: the buckle-loop has a band of recessed gold filigree, of herringbone pattern (formed of two-ply twisted wires); the edge of the tongue-shield has a frame of silver beaded wire; *Wear/marks*: light wear. The gold filigree on the loop has been flattened by the end of the tongue.

(Grid location: [K957] BA0250, grid K12; [K959] BA0248, grid K12)

L. tongue 16.5mm; W. loop 29mm; H. loop 2.5mm; Wt 6.06g; X-ray: L101, L127



588 Photography Aleksandra Osinska, Cotswold Archaeology.

Catalogue entry next page

588 [K303]

CROSS PENDANT IN GOLD WITH A CENTRAL GARNET AND FILIGREE DECORATION. One arm detached and one arm bent. Takes the cross *pattée* form, with a round centre (Diam. 17mm) and flaring arms with concave ends (W. 12–14mm). Loop for suspension on the top arm. Constructed of sheet metal; the broken arm shows a hollow structure. A CT scan has shown the cabochon garnet is plano-concave and that behind the stone is a void; no gold foil was set behind the garnet. Possibly the void was for a relic, but Keyence digital-microscope examination looking through the stone showed no surviving trace of any object behind it (except fine remains possibly of mould). *Gem-setting*: the large flat-topped garnet is set in a plain bezel with a filigree collar. *Filigree*: the arms are filled with scrollwork, mainly volute scrolls, and occasional annulets, all in beaded wire; there is some variation in the patterns; the loop is decorated with two bands of S-scrolls and terminates on the reverse in a triangular projection also with scrolls; the gem-setting is framed by a pair of beaded wires with a thinner plain wire between; the reverse wire combination (of a beaded wire flanked by plain wires) forms triple-strand on the loop, dividing the bands of scrolls; further thick and thin beaded wires frame the edges of the arms and loop. *Wear/marks*: light wear. The filigree on the reverse of the loop has been flattened in places or possibly cut. The loop is slightly squashed.

(Grid location: [K303] TH190, no location)

L. 64.5mm; W. 50mm; H. 9.5mm; Wt 24.38g; X-ray: L73



Staffordshire Hoard Catalogue

The catalogue was produced by the project

Contextualising Metal-Detected Discoveries: Staffordshire Anglo-Saxon Hoard

Historic England Project 5892

The Staffordshire Hoard is owned by the Birmingham City Council and the Stoke-on-Trent City Council and cared for on their behalf by Birmingham Museums Trust and The Potteries Museum & Art Gallery.

The Staffordshire Hoard research project was conducted by Barbican Research Associates Ltd and funded by Historic England and the owners.

