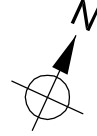











Background mapping reproduced from site plan by
Mitham Survey Department. Contains Ordnance Survey Digital Data.
Crown Copyright Reserved. Licence No. 0100019934



Whitemoor Haye Quarry
Alrewas South Proposed Extension
Alrewas, Staffordshire
Geophysical Survey 2012
Figure 12: Magnetometer survey
(with interpretation)

0 1:1500 50m

-  magnetic anomalies (archaeological ?)
-  magnetic disturbances (recent / non-archaeological)
-  background magnetic activity (natural / non-archaeological ?)
-  weak natural magnetic anomalies (alluvial ground)
-  cultivation ?
-  strong (ferrous) magnetic anomalies
-  former field boundaries (seen also in 1883 OS map ?)
-  field drains?
-  pipe (and associated magnetic disturbance)

