








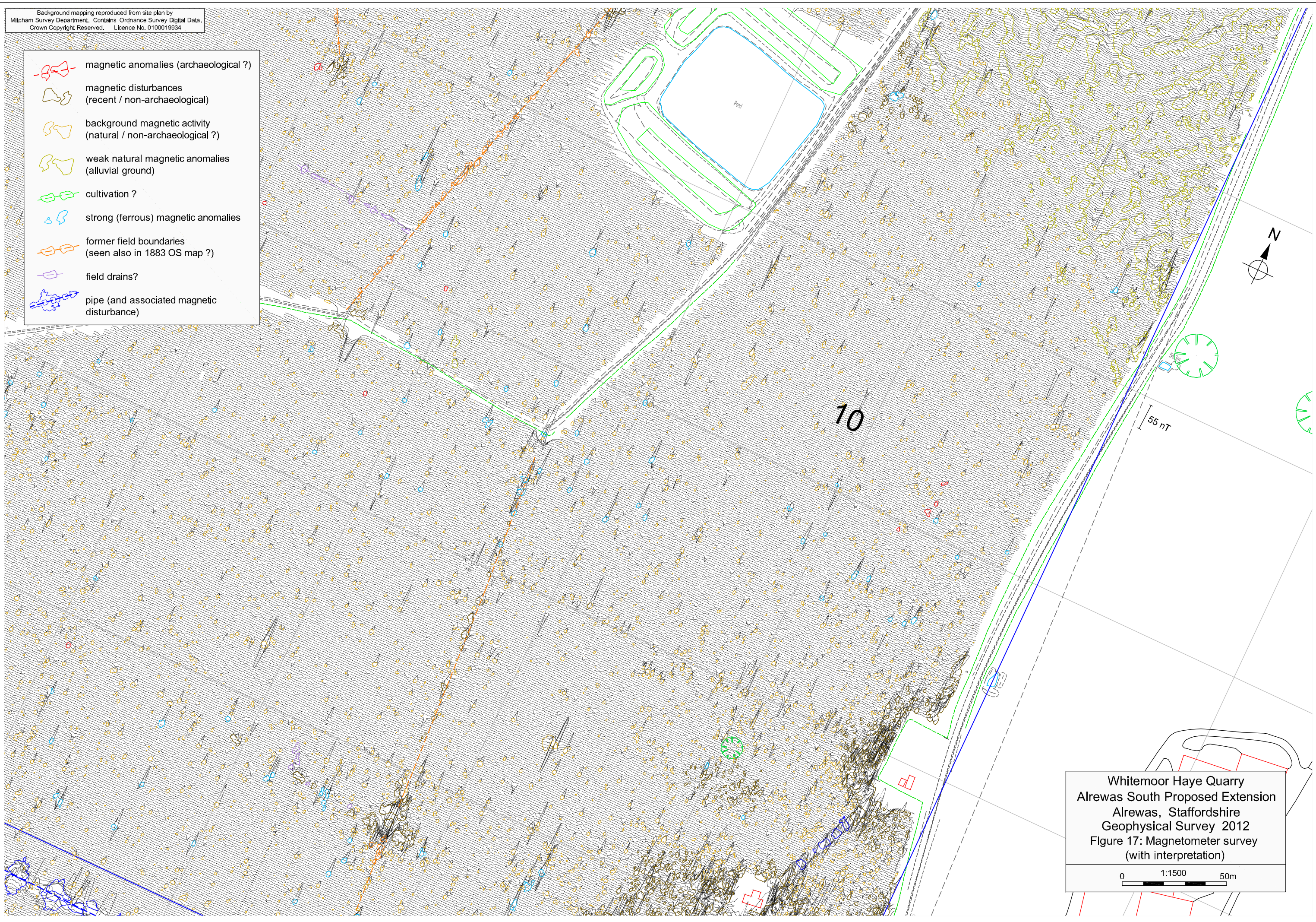


-  magnetic anomalies (archaeological ?)
-  magnetic disturbances
(recent / non-archaeological)
-  background magnetic activity
(natural / non-archaeological ?)
-  weak natural magnetic anomalies
(alluvial ground)
-  cultivation ?
-  strong (ferrous) magnetic anomalies
-  former field boundaries
(seen also in 1883 OS map ?)
-  field drains?
-  pipe (and associated magnetic disturbance)



Whitemoor Haye Quarry
Alrewas South Proposed Extension
Alrewas, Staffordshire
Geophysical Survey 2012
Figure 17: Magnetometer survey
(with interpretation)

0 1:1500 50m