








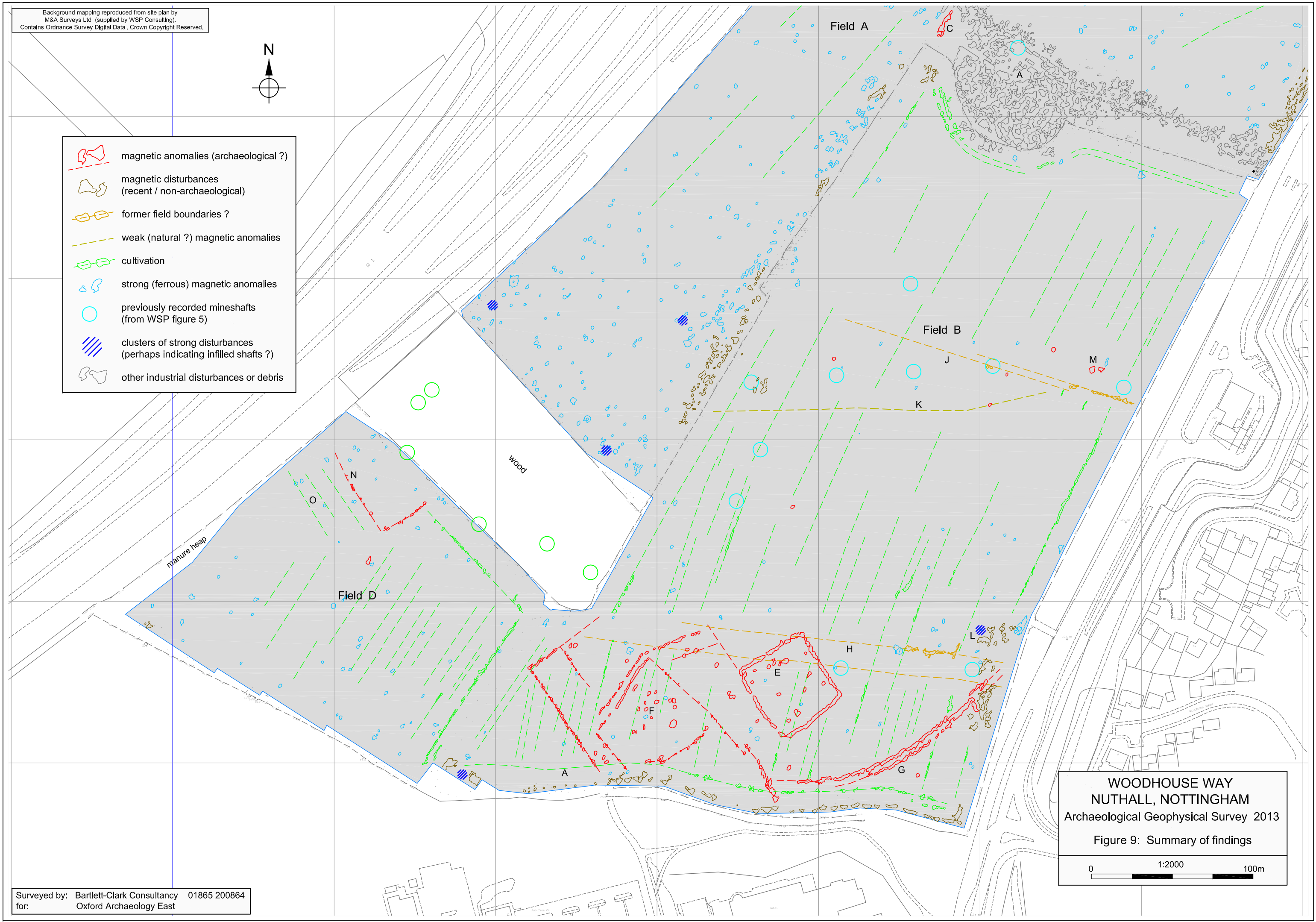


Background mapping reproduced from site plan by M&A Surveys Ltd (supplied by WSP Consulting). Contains Ordnance Survey Digital Data. Crown Copyright Reserved.



-  magnetic anomalies (archaeological ?)
-  magnetic disturbances (recent / non-archaeological)
-  former field boundaries ?
-  weak (natural ?) magnetic anomalies
-  cultivation
-  strong (ferrous) magnetic anomalies
-  previously recorded mineshafts (from WSP figure 5)
-  clusters of strong disturbances (perhaps indicating infilled shafts ?)
-  other industrial disturbances or debris



**WOODHOUSE WAY  
NUTHALL, NOTTINGHAM**  
Archaeological Geophysical Survey 2013  
Figure 9: Summary of findings

0 1:2000 100m