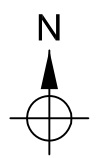







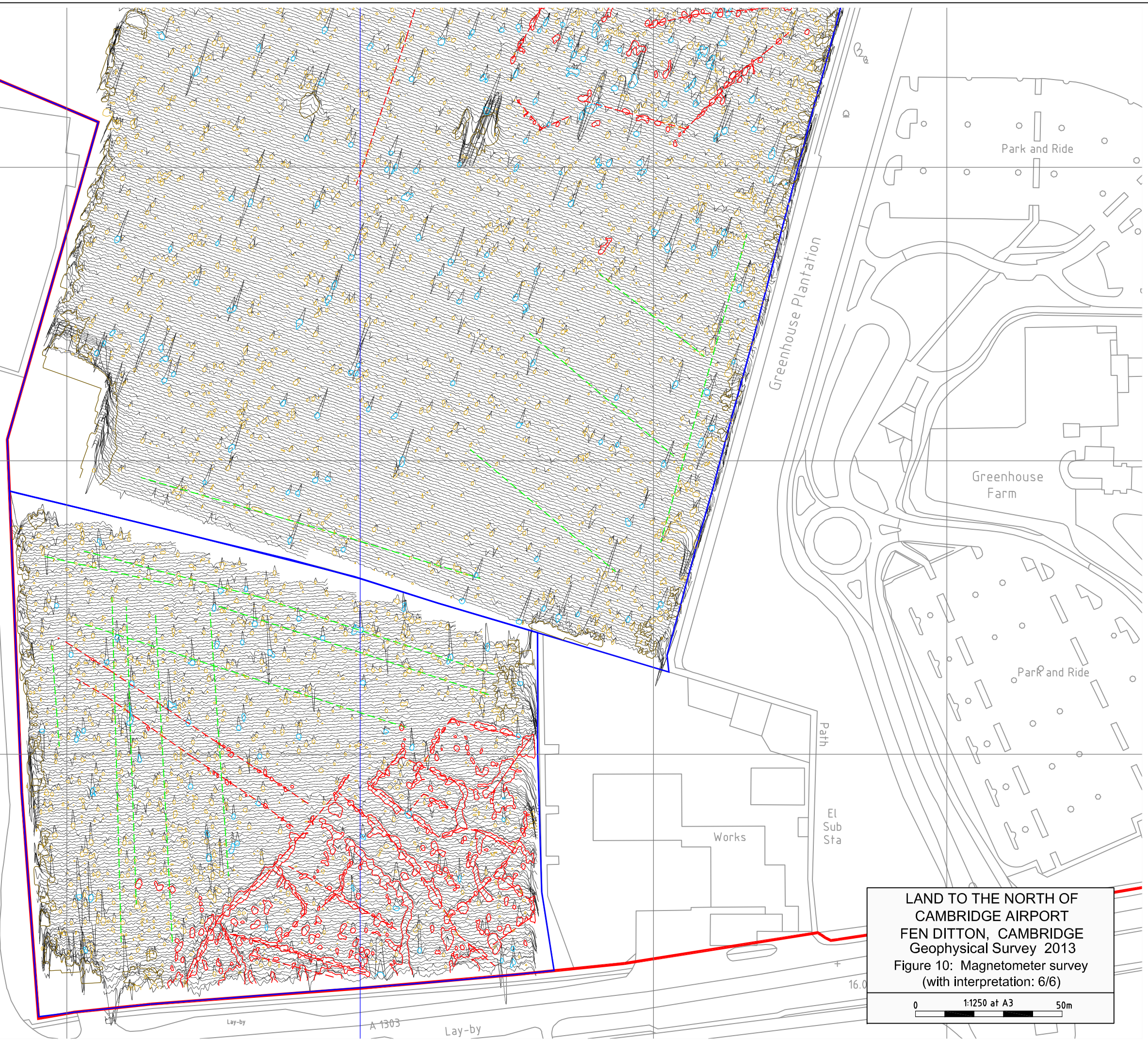


Background mapping contains OS digital data.
Crown Copyright reserved.



-  magnetic anomalies (archaeological ?)
-  magnetic disturbances (recent / non-archaeological)
-  weak (natural ?) magnetic anomalies
-  cultivation
-  strong (ferrous) magnetic anomalies
-  field drains?
-  pipe (and associated magnetic disturbance)



El Sub Sta

Works

El Sub Sta

Path

Park and Ride

Greenhouse Farm

Park and Ride

16.0

Lay-by

A 1303

Lay-by

THE MARSHALL WAY
Surveyed by Bartlett - Clark Consultancy (01865 200864)
for Cambridge Archaeological Unit

LAND TO THE NORTH OF
CAMBRIDGE AIRPORT
FEN DITTON, CAMBRIDGE
Geophysical Survey 2013
Figure 10: Magnetometer survey
(with interpretation: 6/6)

0 1:1250 at A3 50m