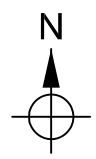







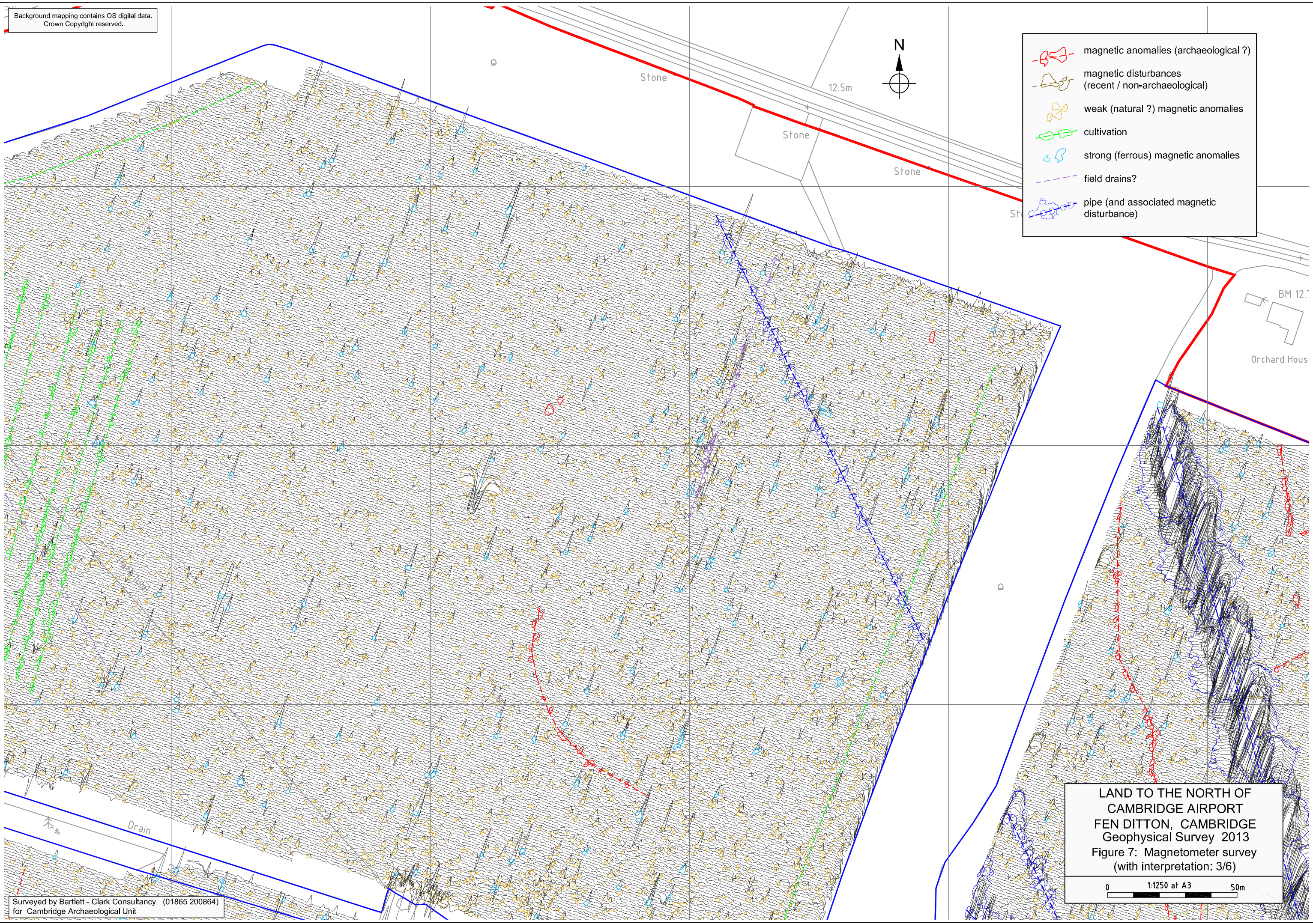


Background mapping contains OS digital data.  
Crown Copyright reserved.



-  magnetic anomalies (archaeological ?)
-  magnetic disturbances (recent / non-archaeological)
-  weak (natural ?) magnetic anomalies
-  cultivation
-  strong (ferrous) magnetic anomalies
-  field drains?
-  pipe (and associated magnetic disturbance)



LAND TO THE NORTH OF  
CAMBRIDGE AIRPORT  
FEN DITTON, CAMBRIDGE  
Geophysical Survey 2013  
Figure 7: Magnetometer survey  
(with interpretation: 3/6)

0 1:1250 at A3 50m

Surveyed by Bartlett - Clark Consultancy (01865 200864)  
for Cambridge Archaeological Unit