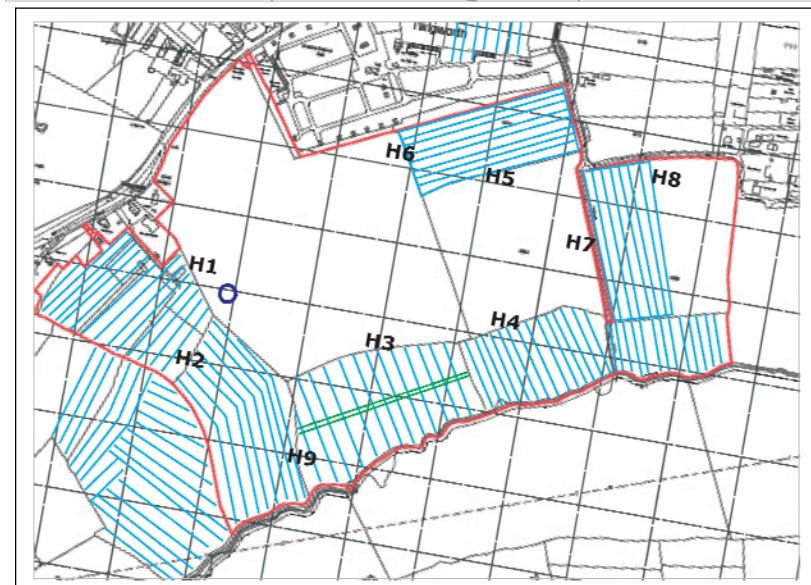
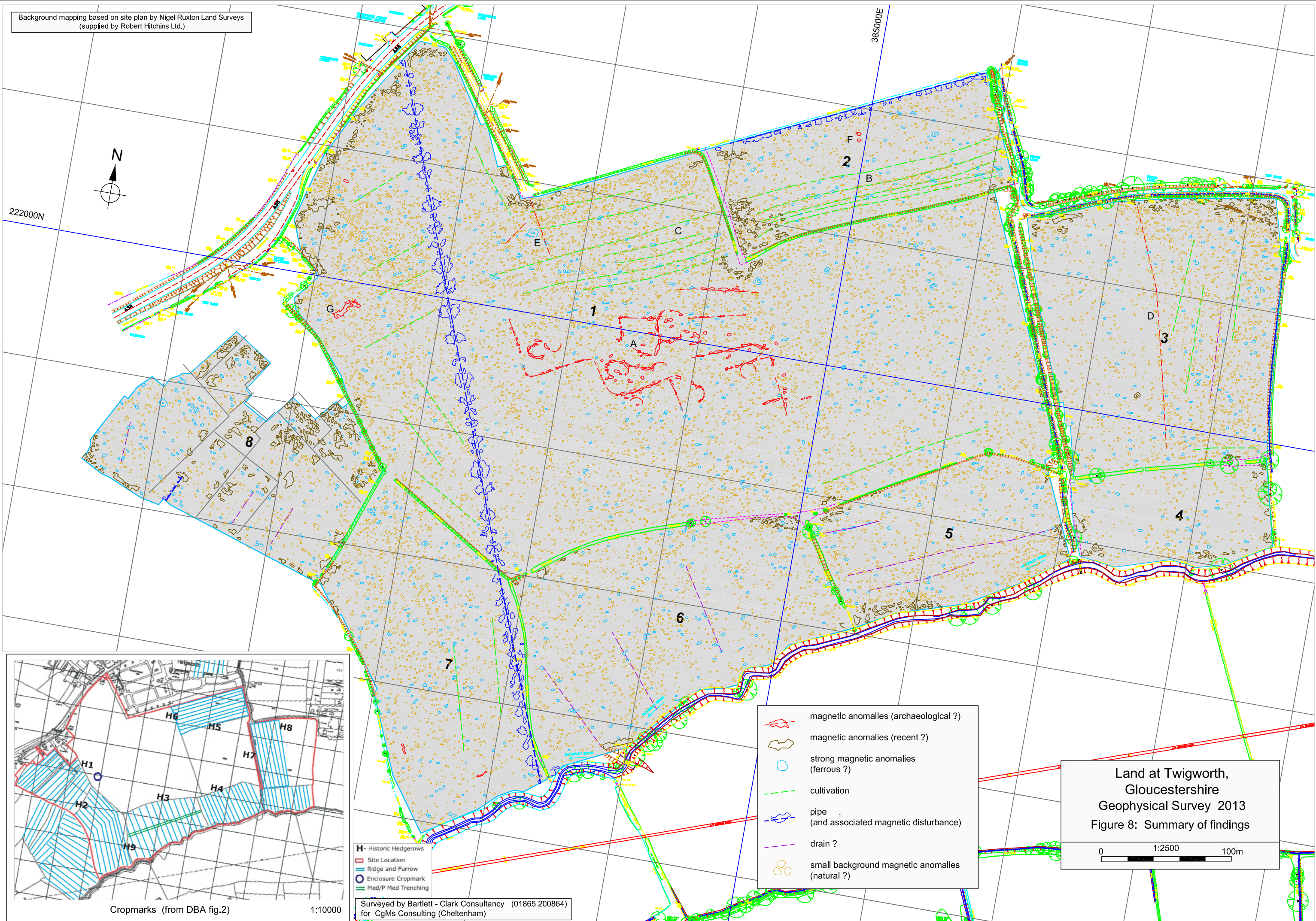


Background mapping based on site plan by Nigel Ruxton Land Surveys
(supplied by Robert Hitchins Ltd.)



222000N

385000E










Cropmarks (from DBA fig.2)

1:10000

H - Historic Hedgerows
 Site Location
 Ridge and Furrow
 Enclosure Cropmark
 Med/P Med Trenching

Surveyed by Bartlett - Clark Consultancy (01865 200864)
 for CgMs Consulting (Cheltenham)

-  magnetic anomalies (archaeological ?)
-  magnetic anomalies (recent ?)
-  strong magnetic anomalies (ferrous ?)
-  cultivation
-  pipe (and associated magnetic disturbance)
-  drain ?
-  small background magnetic anomalies (natural ?)

Land at Twigworth,
 Gloucestershire
 Geophysical Survey 2013
 Figure 8: Summary of findings

0 1:2500 100m