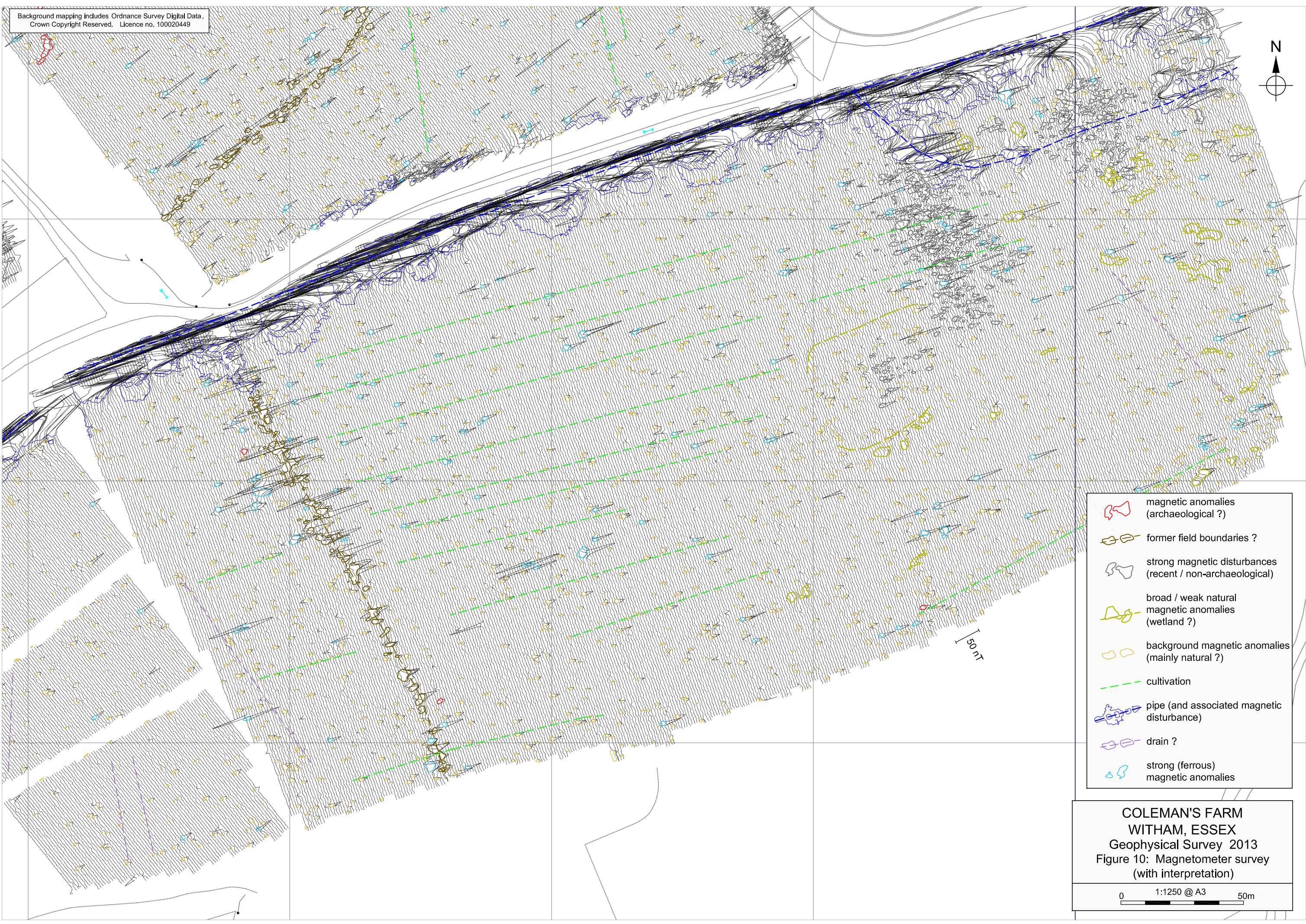











Background mapping includes Ordnance Survey Digital Data.  
Crown Copyright Reserved. Licence no. 100020449



-  magnetic anomalies (archaeological ?)
-  former field boundaries ?
-  strong magnetic disturbances (recent / non-archaeological)
-  broad / weak natural magnetic anomalies (wetland ?)
-  background magnetic anomalies (mainly natural ?)
-  cultivation
-  pipe (and associated magnetic disturbance)
-  drain ?
-  strong (ferrous) magnetic anomalies

**COLEMAN'S FARM**  
**WITHAM, ESSEX**  
Geophysical Survey 2013  
Figure 10: Magnetometer survey  
(with interpretation)

