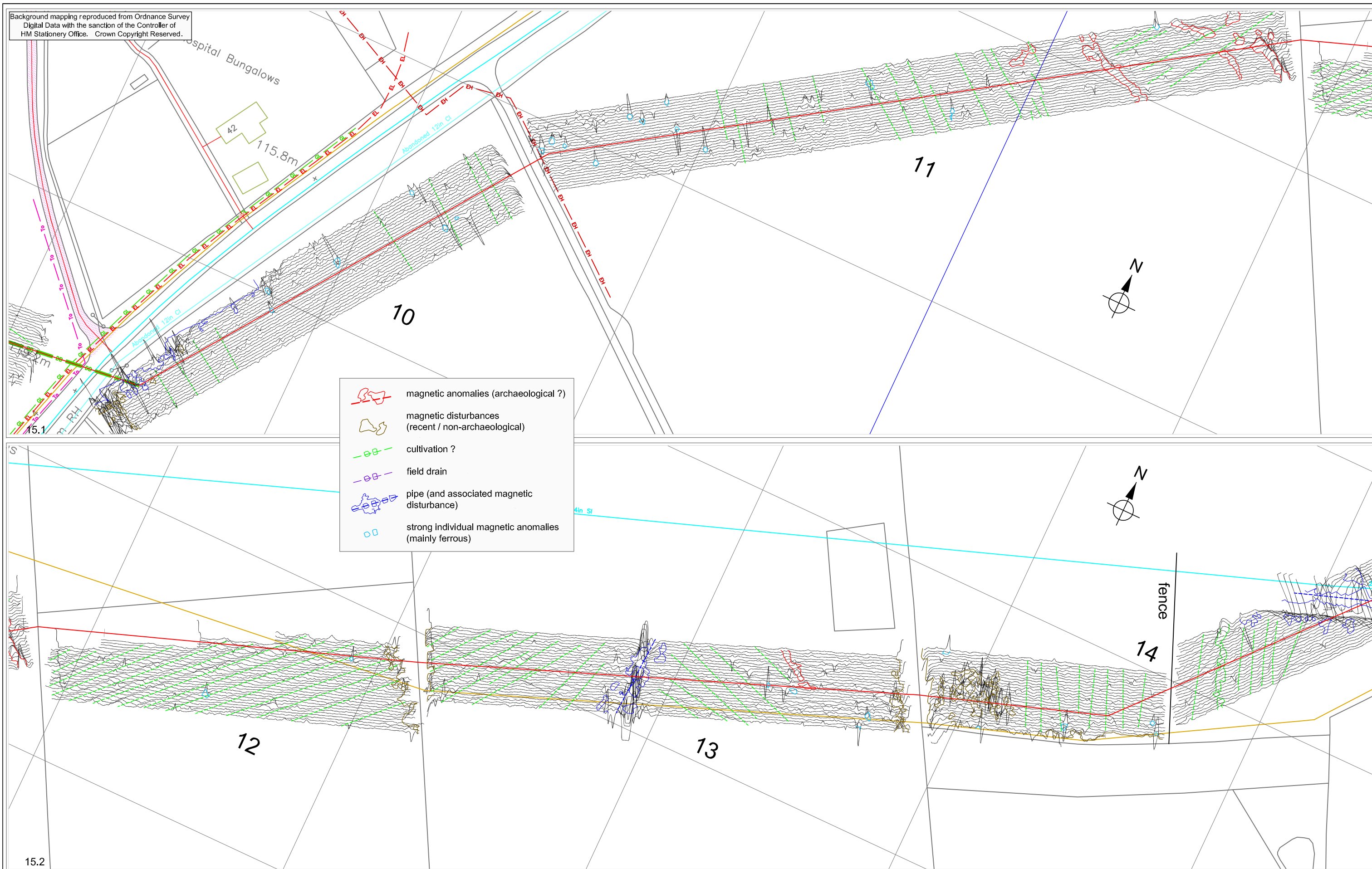


Background mapping reproduced from Ordnance Survey
Digital Data with the sanction of the Controller of
HM Stationery Office. Crown Copyright Reserved.



Surveyed by: Bartlett-Clark Consultancy 01865 200864
for: Cambridge Archaeological Unit

HANNINGTON TO PITSFORD, NORTHAMPTONSHIRE
Proposed Water Main
Archaeological Geophysical Surveys 2013-14
Figures 15.1, 15.2: Magnetometer Survey
(with interpretation)