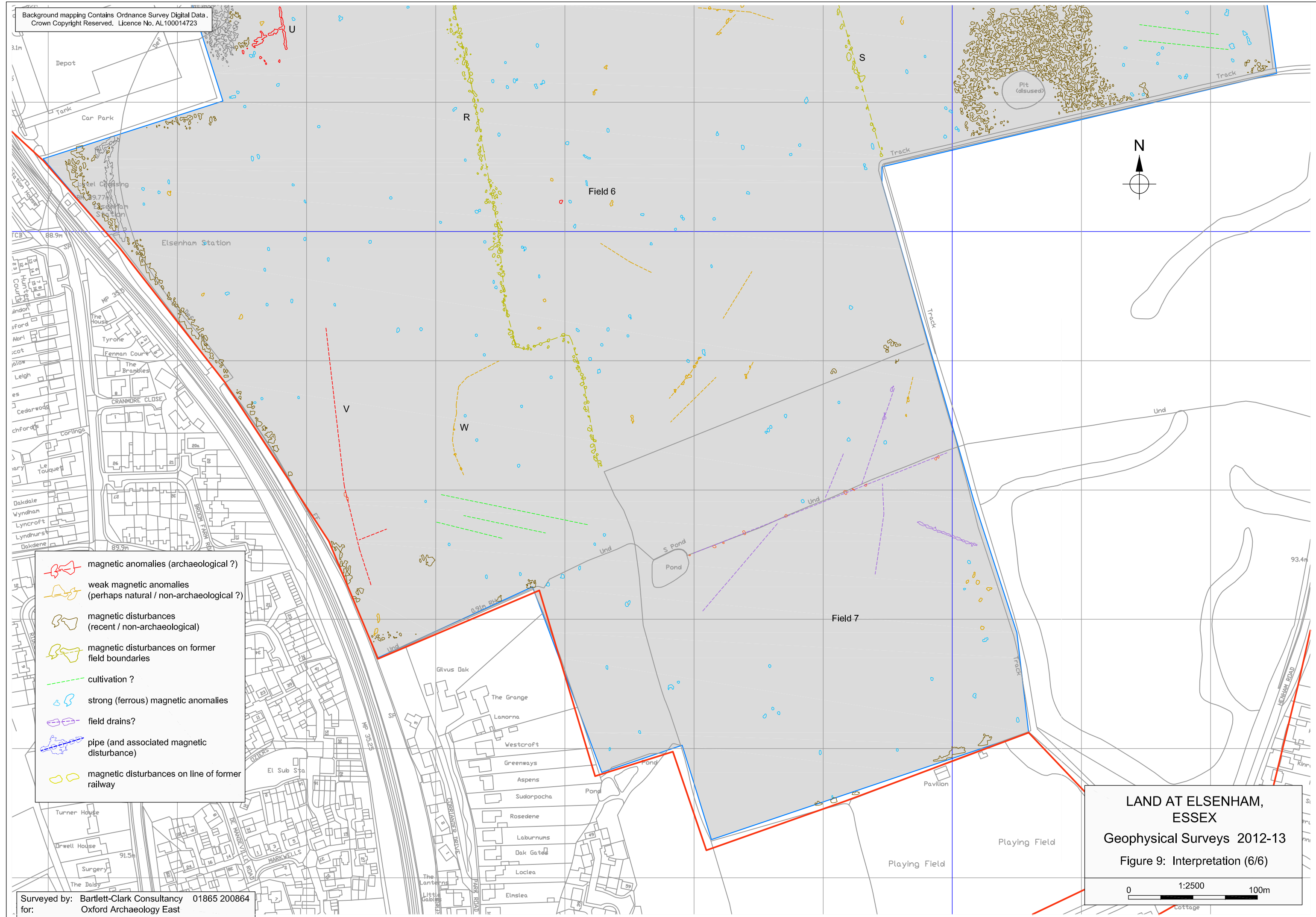











Background mapping Contains Ordnance Survey Digital Data. Crown Copyright Reserved. Licence No. AL100014723



-  magnetic anomalies (archaeological ?)
-  weak magnetic anomalies (perhaps natural / non-archaeological ?)
-  magnetic disturbances (recent / non-archaeological)
-  magnetic disturbances on former field boundaries
-  cultivation ?
-  strong (ferrous) magnetic anomalies
-  field drains?
-  pipe (and associated magnetic disturbance)
-  magnetic disturbances on line of former railway

**LAND AT ELSENHAM,
ESSEX**
Geophysical Surveys 2012-13
Figure 9: Interpretation (6/6)

0 1:2500 100m

Surveyed by: Bartlett-Clark Consultancy 01865 200864
for: Oxford Archaeology East