

















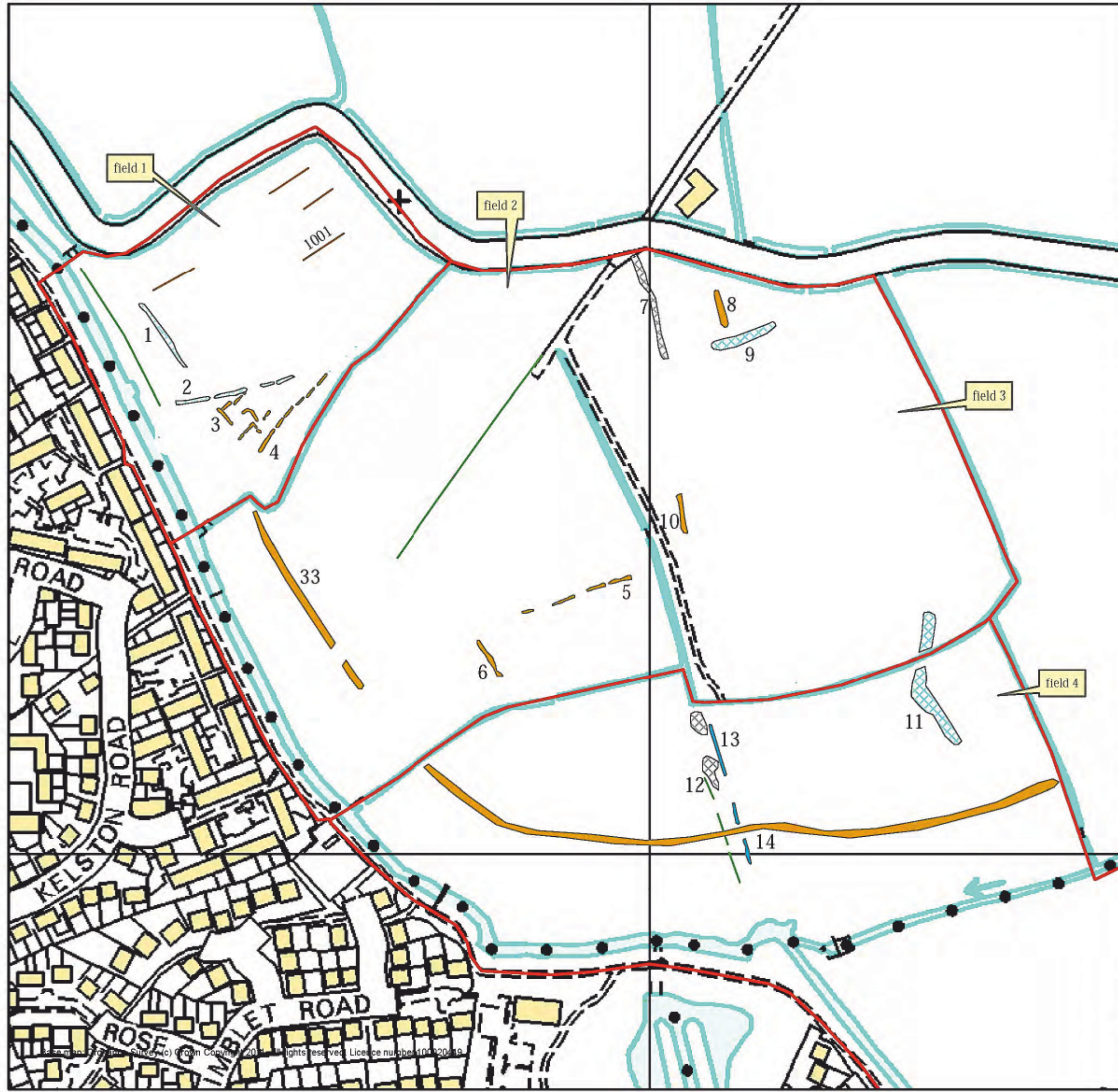


# Substrata

Archaeological Geophysical Surveyors

15 Horizon View, Bath Hotel Road, Westward Ho!  
Bideford, Devon EX39 1GX  
mob: 07788627822  
email: geophysics@substrata.co.uk

An Archaeological Gradiometer Survey  
Weston Urban Villages Strategic Flood Solution - River Banwell  
National grid coordinates: 336700, 164330 to 337610, 163320  
Report: 121206



## Legend

- survey boundary
- possible archaeology, positive anomalies
- possible archaeology, negative anomalies
- possible archaeology, high contrast anomalies
- possible archaeology, mixed spread
- possible archaeology, straightened
- possible archaeological significance, palaeochannel
- possible archaeology, repeated parallels (2)
- possible service, high contrast linear
- possible service, low contrast linear

## Notes:

1. All interpretations are provisional and represent potential archaeological deposits.
2. Representative of trends; only anomalies relevant to potential archaeology are recorded.
3. Anomalies likely to represent very recent ground disturbance are not highlighted.
4. Filled circles used to define anomalies are symbols and do not indicate possible circular archaeological features unless specifically indicated in the text.

Figure 1: survey interpretation, fields 1 to 4





# Substrata

Archaeological Geophysical Surveyors

15 Horizon View, Bath Hotel Road, Westward Ho!  
Bideford, Devon EX39 1GX  
mob: 07788627822  
email: geophysics@substrata.co.uk

An Archaeological Gradiometer Survey  
Weston Urban Villages Strategic Flood Solution - River Banwell  
National grid coordinates: 336700, 164330 to 337610, 163320  
Report: 121206

## Legend

— survey boundary

**gradiometer potential archaeology**

possible archaeology, positive

possible archaeology, negative anomaly

possible archaeology, high contrast anomalies

possible archaeology, mixed spread

possible archaeology, straightened

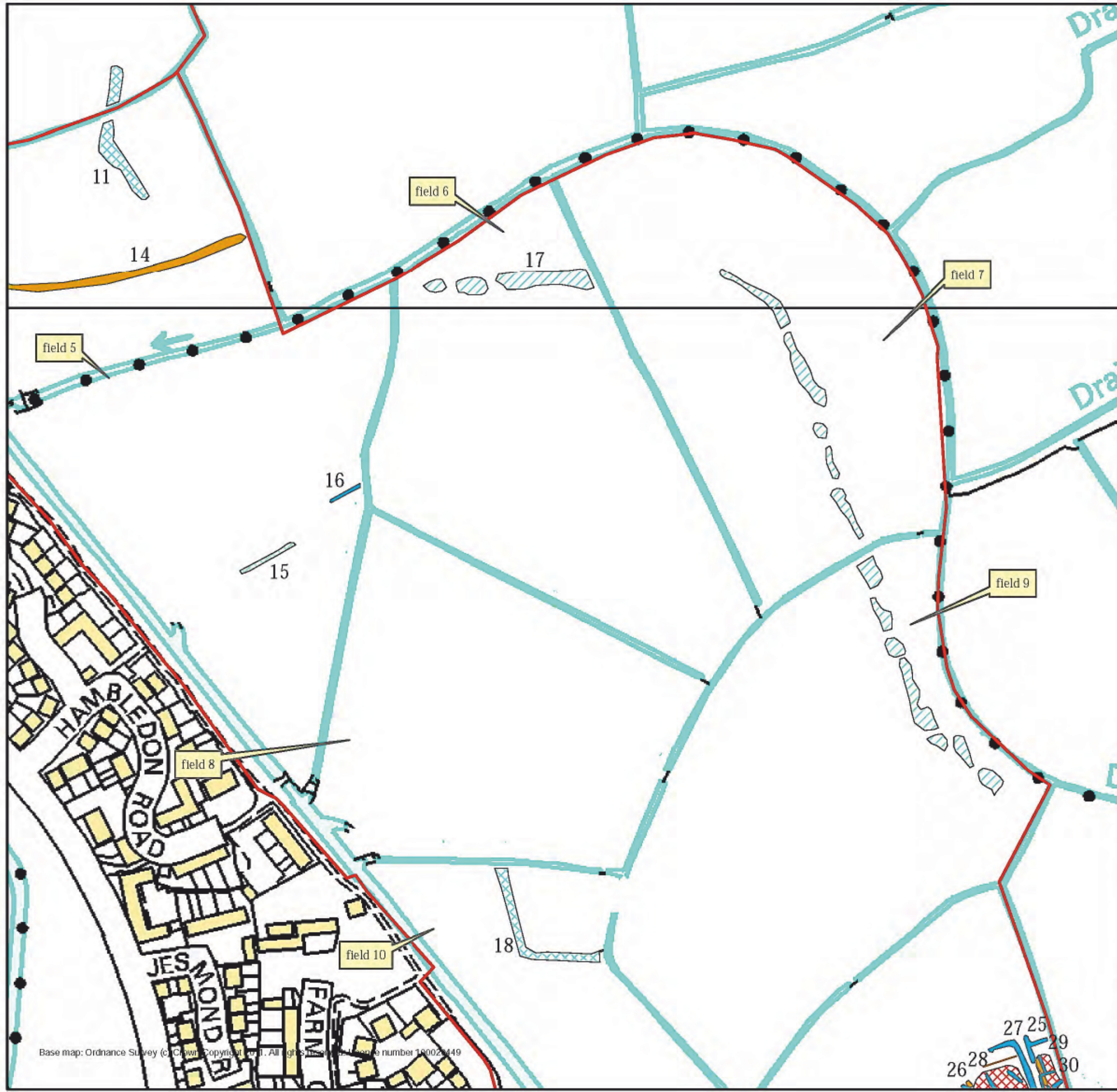
possible archaeological significance, palaeochannel

possible archaeology, repeated parallels (2)

**gradiometer services**

possible service, high contrast linear

possible service, low contrast linear



## Notes:

1. All interpretations are provisional and represent potential archaeological deposits.
2. Representative of trends; only anomalies relevant to potential archaeology are recorded.
3. Anomalies likely to represent very recent ground disturbance are not highlighted.
4. Filled circles used to define anomalies are symbols and do not indicate possible circular archaeological features unless specifically indicated in the text.

0 50 100 Meters

Figure 2: survey interpretation, fields 5 to 10







# Substrata

Archaeological Geophysical Surveyors

15 Horizon View, Bath Hotel Road, Westward Ho!  
Bideford, Devon EX39 1GX  
mob: 07788627822  
email: geophysics@substrata.co.uk

An Archaeological Gradiometer Survey  
Weston Urban Villages Strategic Flood Solution - River Banwell  
National grid coordinates: 336700, 164330 to 337610, 163320  
Report: 121206

## Legend

— survey boundary

### gradiometer potential archaeology

■ possible archaeology, positive

■ possible archaeology, negative anomaly

▨ possible archaeology, high contrast anomalies

▩ possible archaeology, mixed spread

▧ possible archaeology, straightened

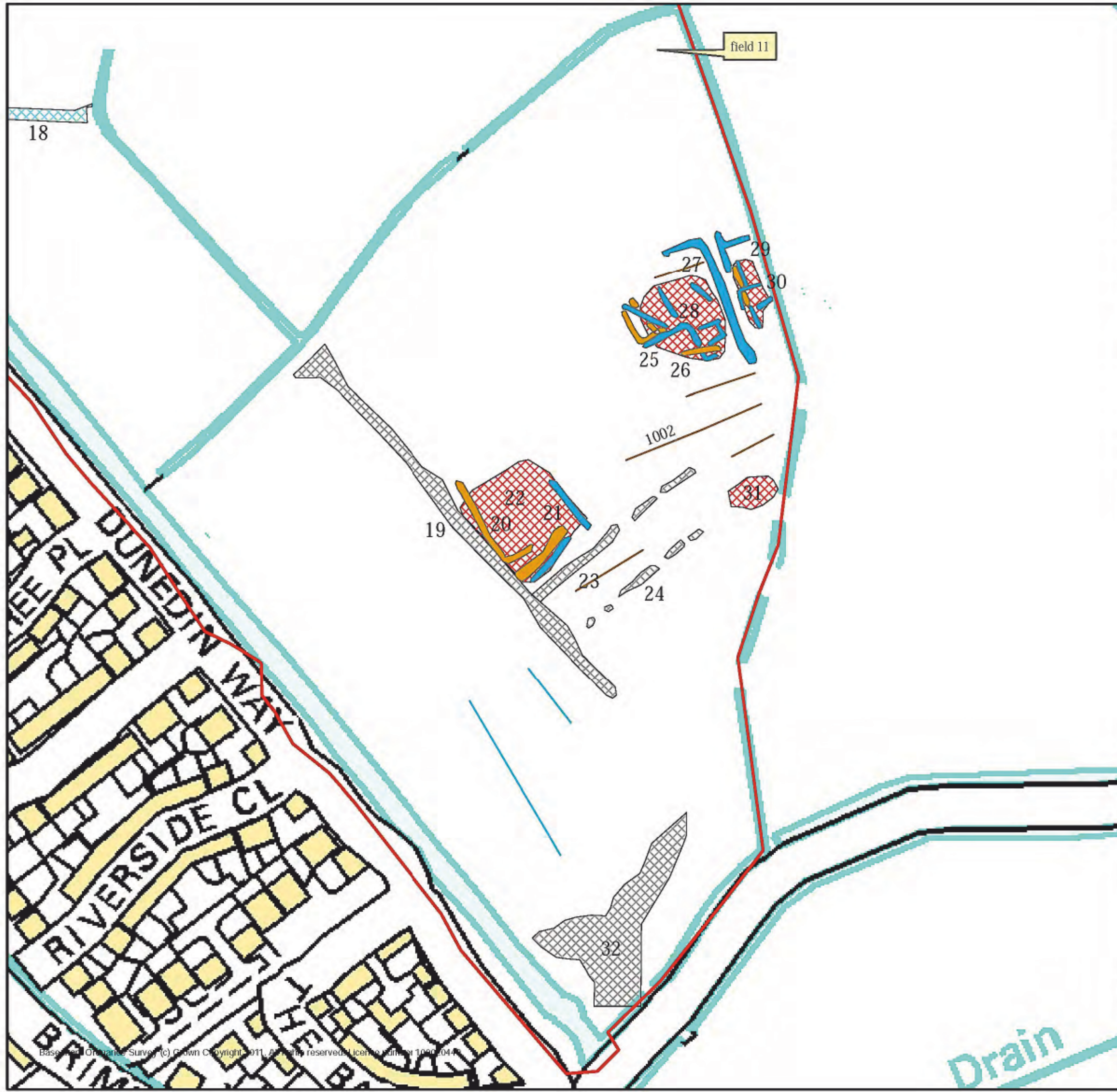
▨ possible archaeological significance, palaeochannel

— possible archaeology, repeated parallels (2)

### gradiometer services

— possible service, high contrast linear

— possible service, low contrast linear



## Notes:

1. All interpretations are provisional and represent potential archaeological deposits.
2. Representative of trends; only anomalies relevant to potential archaeology are recorded.
3. Anomalies likely to represent very recent ground disturbance are not highlighted.
4. Filled circles used to define anomalies are symbols and do not indicate possible circular archaeological features unless specifically indicated in the text.

0 50 100 Meters

Figure 3: survey interpretation, field 11







Code of approved practice for the regulation of contractual arrangements in archaeology

Geological Survey of Great Britain (England and Wales) Sidmouth Sheet 326 & 340 Solid and Drift Edition 1:50 000 Series

Western Urban Villages Strategic Flood Solution - River Banwell, Nr St Georges, Weston-Super-Mare, North Somerset, ST 3670 6433 to ST 3671 6332

Landscape, Community and Colonisation - The North Somerset Levels during the 1st to 2nd millennia AD

Geophysical Data in Archaeology: A Guide to Good Practice ADS series of Guides to Good Practice

Soils of South West England Sheet 5





An Archaeological Gradiometer Survey  
Weston Urban Villages Strategic Flood Solution - River Banwell  
National grid coordinates: 336700, 164330 to 337610, 163320  
Report: 121206

### Legend

- survey boundary
- possible archaeology, positive
- possible archaeology, negative anomaly
- ▨ possible archaeology, high contrast anomalies
- ▩ possible archaeology, mixed spread
- ▧ possible archaeology, straightened
- ▨ possible archaeological significance, palaeochannel
- possible archaeology, repeated parallels (2)
- possible service, high contrast linear
- possible service, low contrast linear



### Notes:

1. All interpretations are provisional and represent potential archaeological deposits.
2. Representative of trends; only anomalies relevant to potential archaeology are recorded.
3. Anomalies likely to represent very recent ground disturbance are not highlighted.
4. Filled circles used to define anomalies are symbols and do not indicate possible circular archaeological features unless specifically indicated in the text.

0 50 100 200 Meters

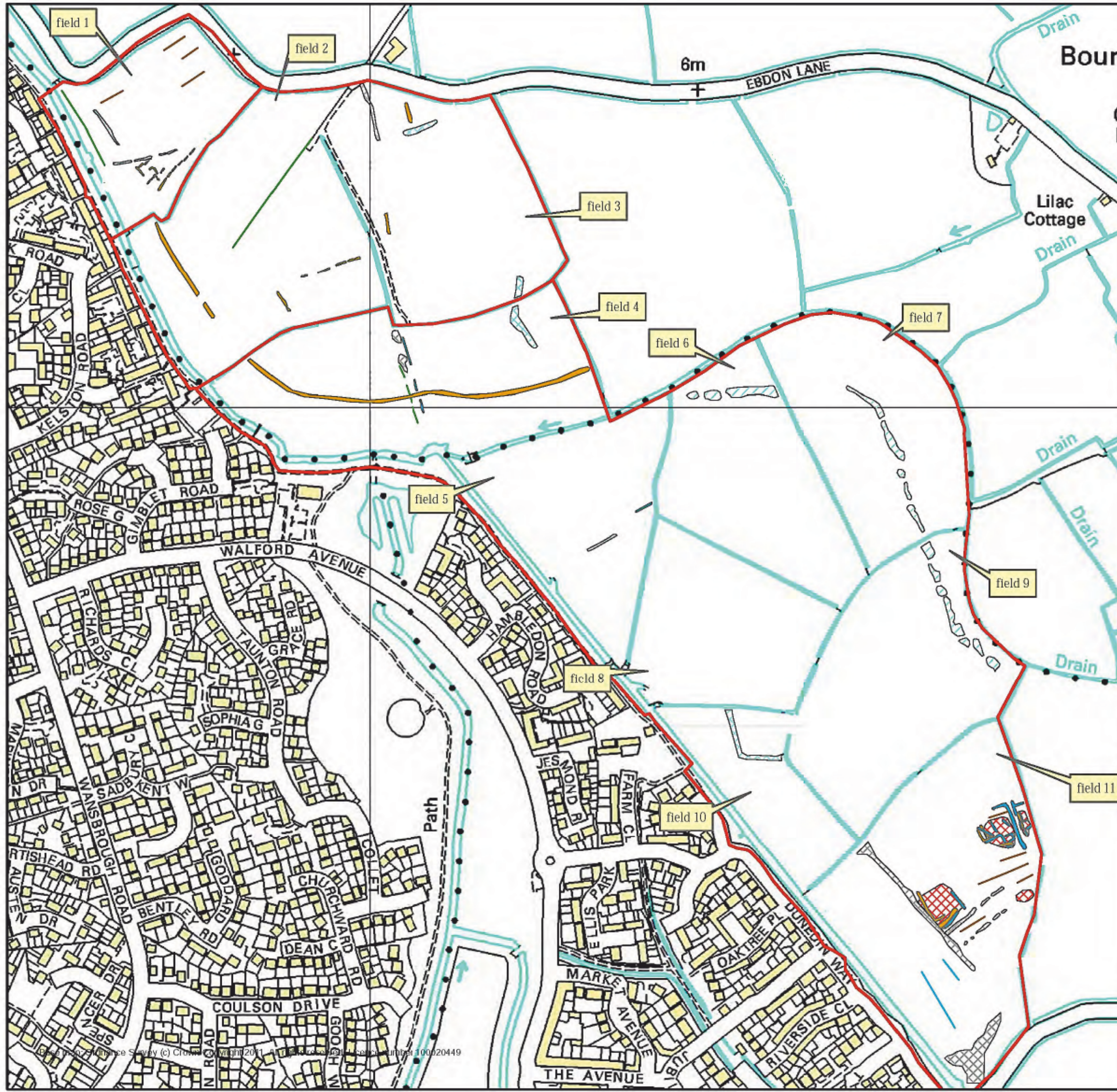


Figure 4: survey interpretation, all fields



# Substrata

Archaeological Geophysical Surveyors

15 Horizon View, Bath Hotel Road, Westward Ho!  
Bideford, Devon EX39 1GX  
mob: 07788627822  
email: geophysics@substrata.co.uk

An Archaeological Gradiometer Survey  
Weston Urban Villages Strategic Flood Solution - River Banwell  
National grid coordinates: 336700, 164330 to 337610, 163320  
Report: 121206



### Legend

— survey boundary

gradiometer survey (nT)

High : 1

Low : -1

Fields 2 and 3: Caesium magnetometer survey  
processed data scale +/- 7nT

0 50 100 200  
Meters

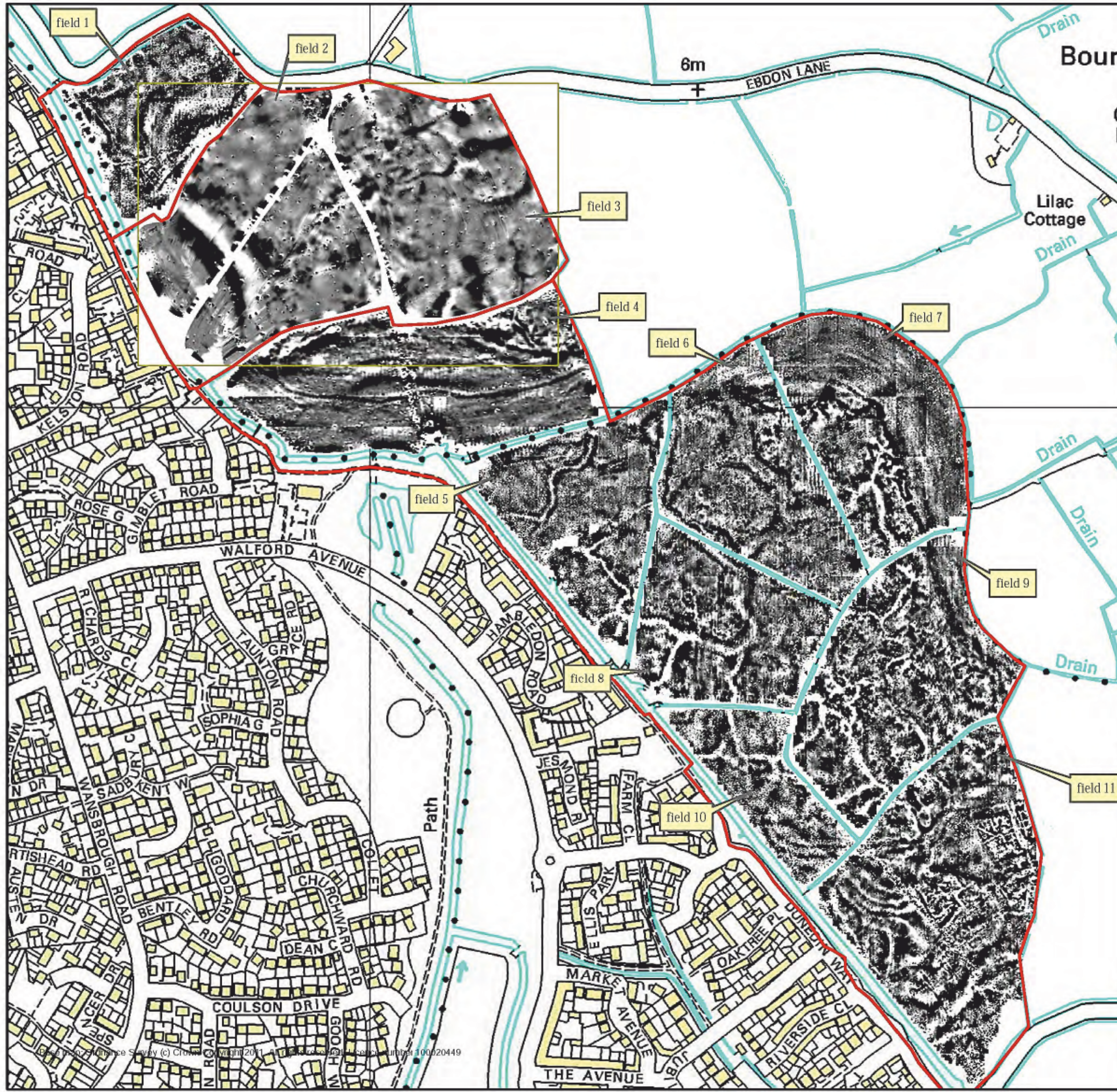


Figure 5: processed gradiometer data (fields 1 and 4 to 11)  
processed caesium magnetometer data (fields 2 and 3)



An Archaeological Gradiometer Survey  
Weston Urban Villages Strategic Flood Solution - River Banwell  
National grid coordinates: 336700, 164330 to 337610, 163320  
Report: 121206



### Legend

— survey boundary

gradiometer survey (nT)

High : 1

Low : -1

Fields 2 and 3: Caesium magnetometer survey  
processed data scale +/- 7nT

0 50 100  
Meters

Figure 6: processed gradiometer data (fields 1 and 4)  
processed caesium magnetometer data (fields 2 and 3)



# Substrata

Archaeological Geophysical Surveyors

15 Horizon View, Bath Hotel Road, Westward Ho!  
Bideford, Devon EX39 1GX  
mob: 07788627822  
email: geophysics@substrata.co.uk

An Archaeological Gradiometer Survey  
Weston Urban Villages Strategic Flood Solution - River Banwell  
National grid coordinates: 336700, 164330 to 337610, 163320  
Report: 121206



## Legend

- survey boundary
- gradiometer survey (nT)
  - High : 1
  - Low : -1

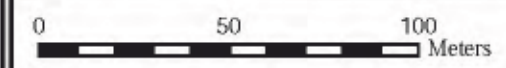


Figure 7: processed survey data (fields 5 to 10)



# Substrata

Archaeological Geophysical Surveyors

15 Horizon View, Bath Hotel Road, Westward Ho!  
Bideford, Devon EX39 1GX  
mob: 07788627822  
email: geophysics@substrata.co.uk

An Archaeological Gradiometer Survey  
Weston Urban Villages Strategic Flood Solution - River Banwell  
National grid coordinates: 336700, 164330 to 337610, 163320  
Report: 121206



### Legend

- survey boundary
- gradiometer survey (nT)
  - High : 1
  - Low : -1

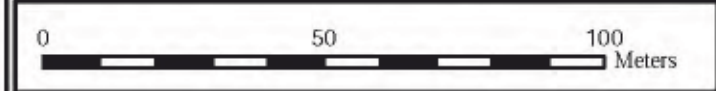


Figure 8: processed survey data, field 11





Reproduced from the Ordnance Survey mapping with the permission of the Controller of Her Majesty's Stationery Office © Crown Copyright AC archaeology, Chickadee, Wiltshire. Licence No AL100016452



PROJECT  
**Weston Urban Villages Strategic Flood Solution  
 - River Banwell**

TITLE

Fig. 9: Location of site









