

# Oxfordshire Historic Landscape Characterisation Project

**Historic Landscapes of Oxfordshire: Past,  
Present, and Future Day School**

**21 January 2017**

**Abi Tompkins, HLC Officer  
[abi.tompkins@oxfordshire.gov.uk](mailto:abi.tompkins@oxfordshire.gov.uk)**

River Thames and Dorchester-on-Thames



# Introduction



Views across the Thames Valley from Watlington Park

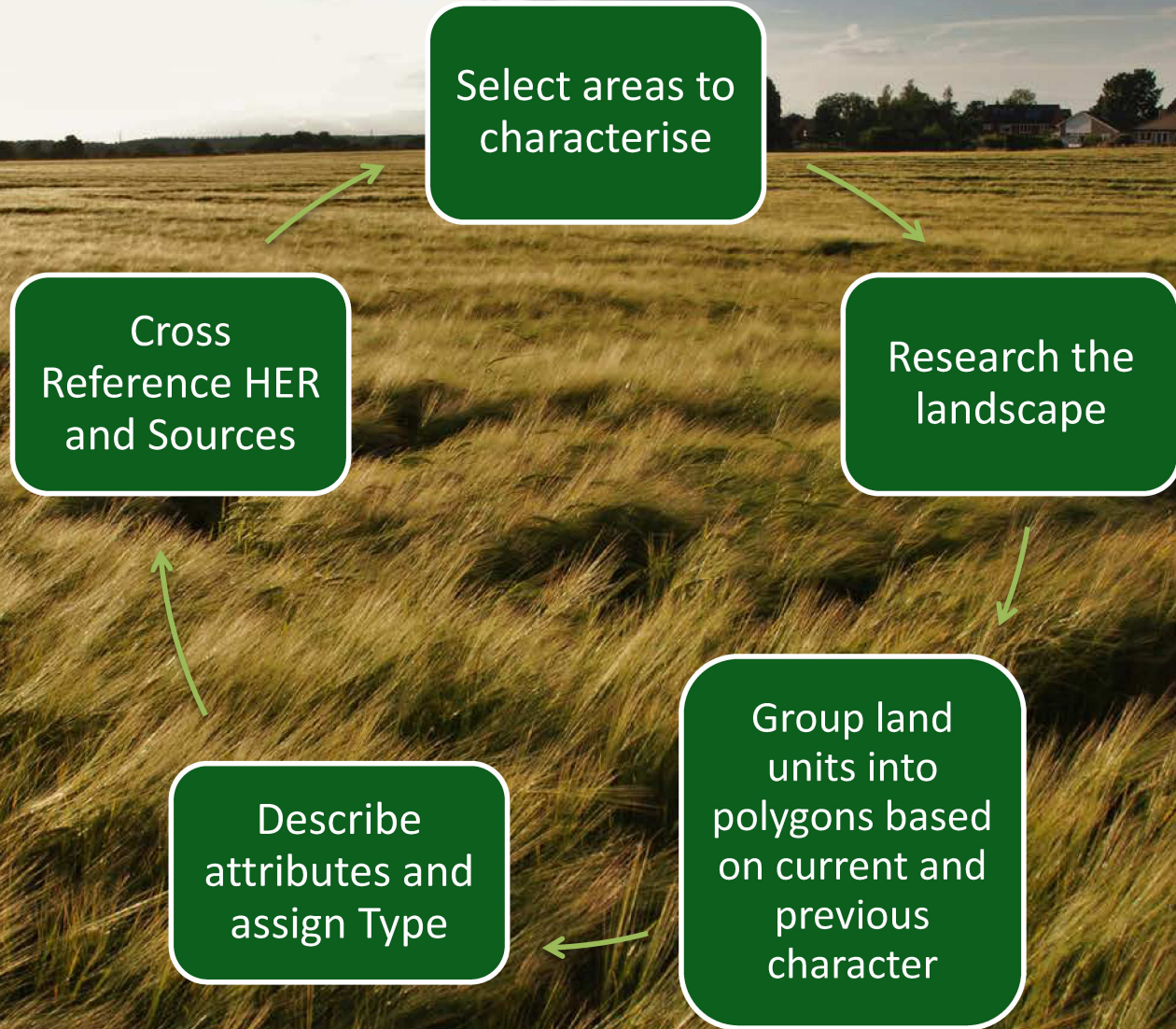


# What is Historic Landscape Characterisation (HLC)?



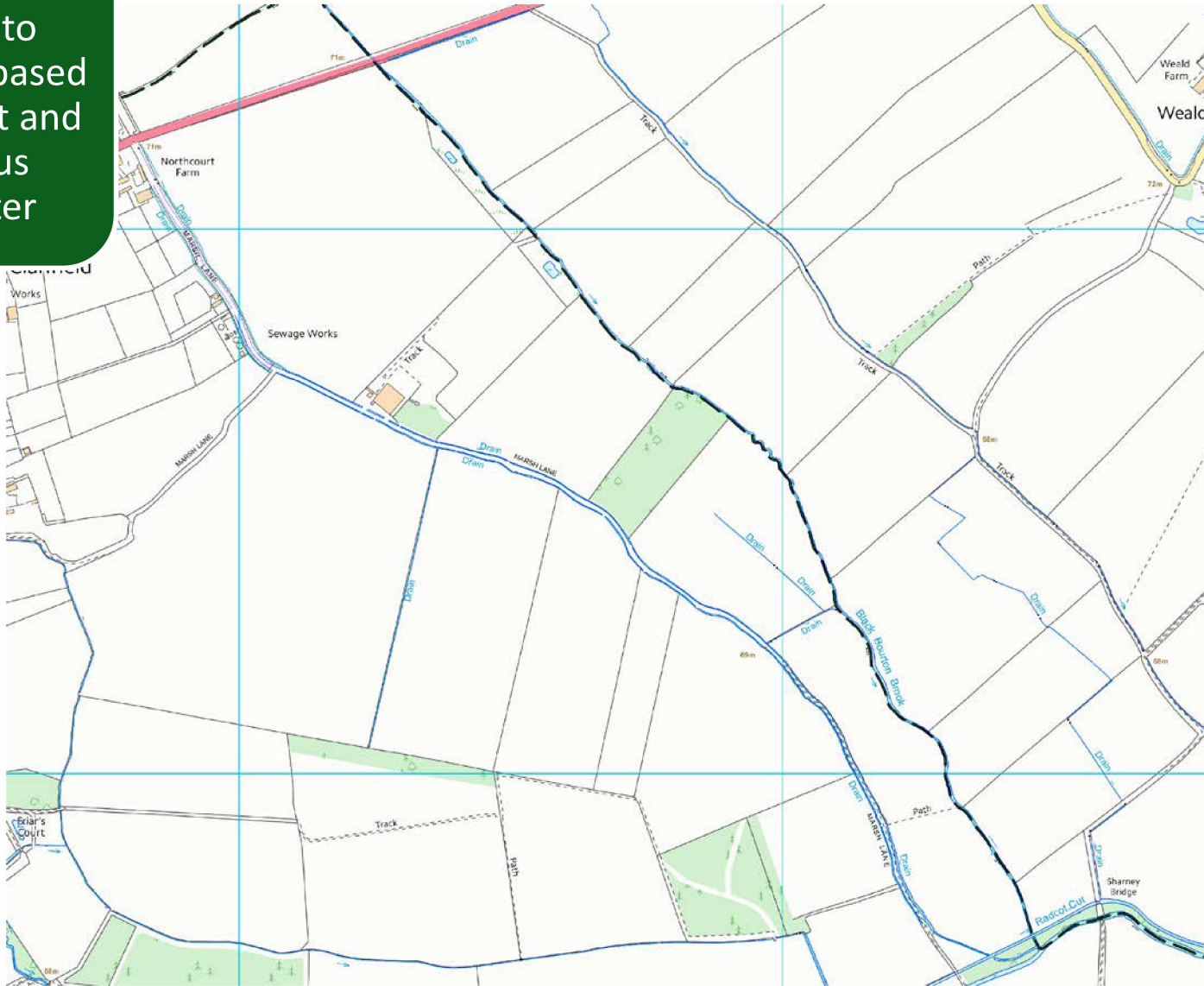
“A map based technique to examine the historic and archaeological processes which have influenced the form and use of the modern landscape”

Disused Quarry at Dry Sandford



Prairie Fields, Dorchester-on-Thames

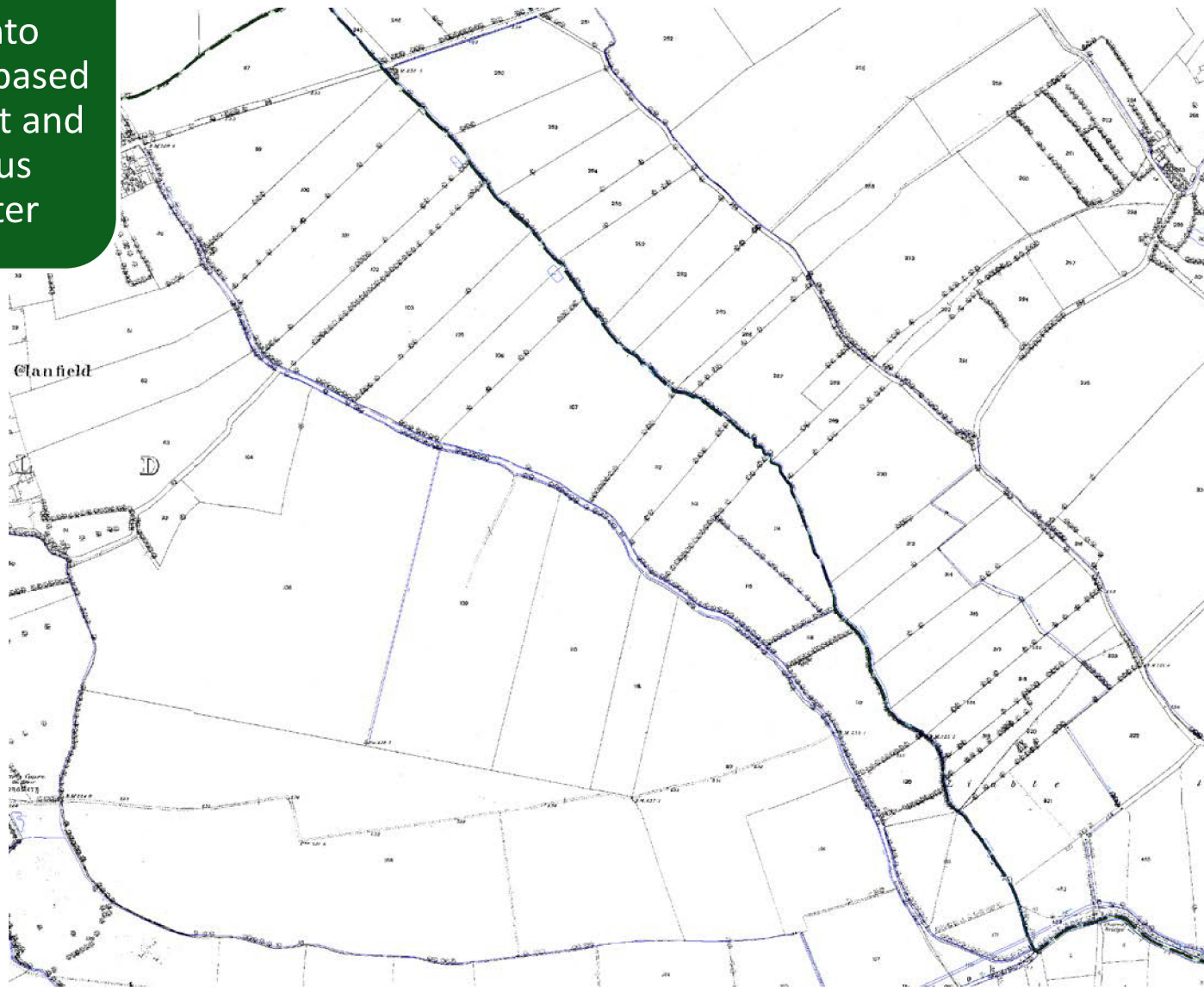
Group land units into polygons based on current and previous character



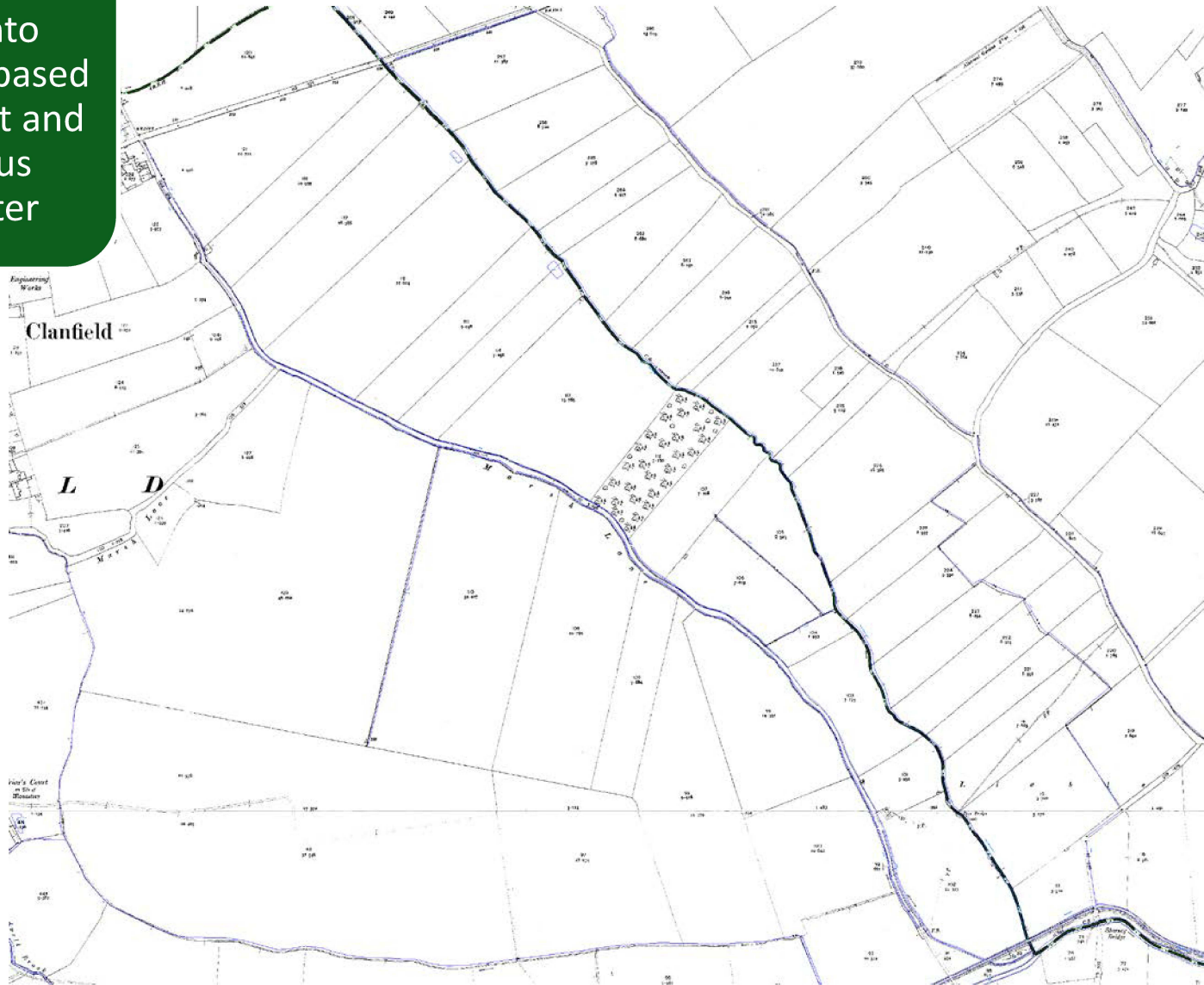
Group land units into polygons based on current and previous character



Group land units into polygons based on current and previous character



Group land units into polygons based on current and previous character





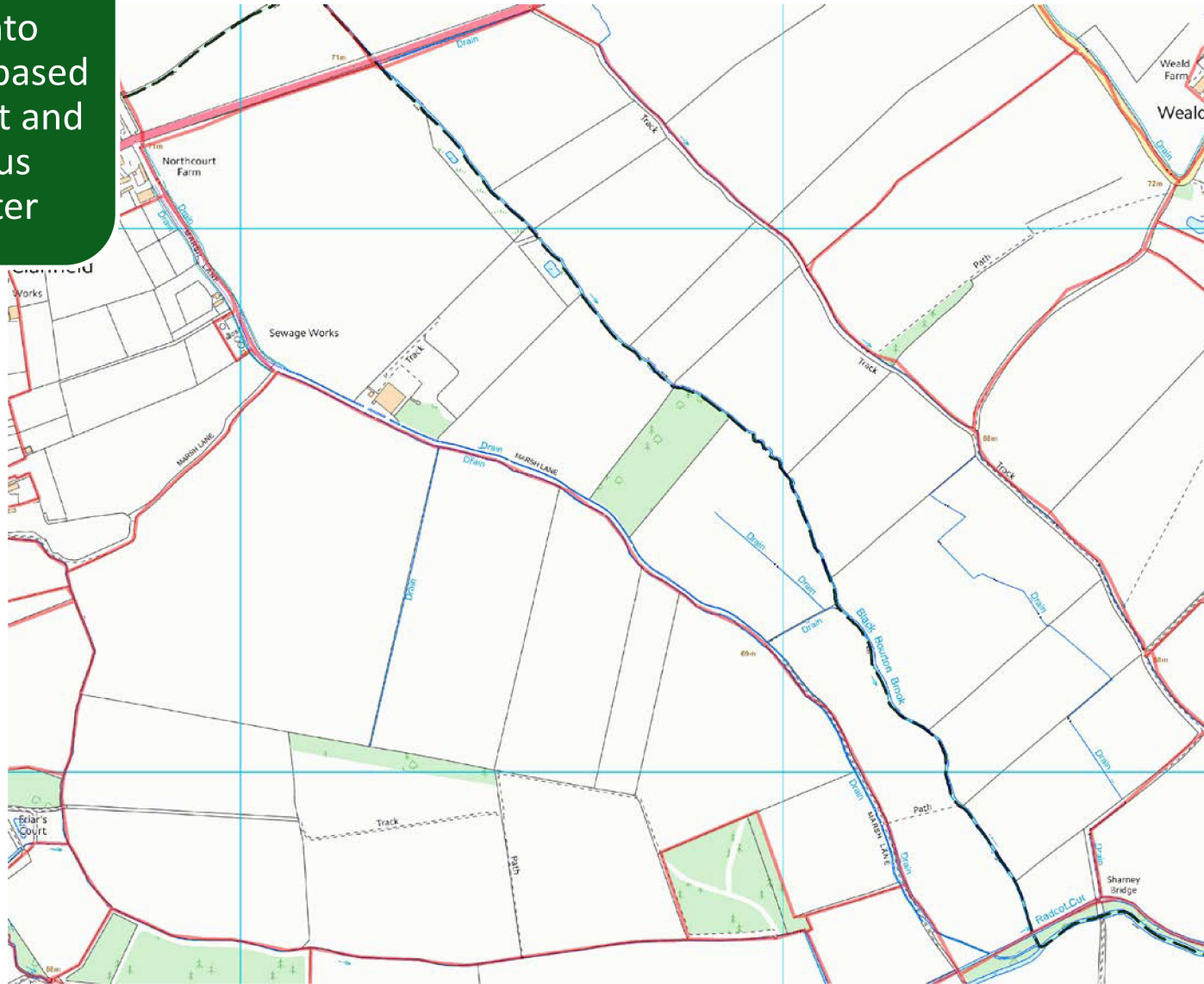
Group land units into polygons based on current and previous character



Group land units into polygons based on current and previous character



Group land units into polygons based on current and previous character



# Cross Reference HER and Sources

HOX11888: \_ X

Historic Landscape Character Area HOX11888

ew Copy Delete Link Task Bookmark Report Menu Close

Broad Type: Enclosure Full Type Code: ENC-RE

Type: Reorganised Enclosures Confidence: Certain

Name:

NGR: Centred SP 2979 0151 (1966m by 1778m) Map: SP20SE Area (Ha): 129.60

Config: Broad Types / Types Attributes Rules

Description Attributes Previous Types Monuments Sources

Summary ?

Period of Origin of Current Type:

Unknown From	Conf	To	Conf	From Period	To Period	User defined
<input type="checkbox"/>		1914 AD	<input type="checkbox"/>	1999 AD	Modern	<input type="checkbox"/>

Period: Modern - 1914 AD to 1999 AD

Description

Major loss on internal boundaries since the 3rd Edition OS. The earlier enclosures are very regular elongated rectilinear enclosures running perpendicular to and either side of Black Bourton Brook. To the west of the brook it is recorded pre enclosure Act of 1839 as 'Marsh Closes' an area of meadow which was enclosed in the 17th century. To the east of the brook this may be the enclosed 'Moor Closes' of Weald, enclosed prior to 1813. Davis' Map shows both areas to be enclosed, but doesn't detail the narrow strips.

LibraryLink:  0 Resources:  0 Tasks:  0 XY

# Cross Reference HER and Sources

HOX11888: \_ X

Historic Landscape Character Area HOX11888

ew Copy Delete Link Task Bookmark Report Menu Close

Broad Type: Enclosure Full Type Code: ENC-RE

Type: Reorganised Enclosures Confidence: Certain

Name:

NGR: Centred SP 2979 0151 (1966m by 1778m) Map: SP20SE Area (Ha): 129.60

Config: Broad Types / Types Attributes Rules

**Description** **Attributes** Previous Types Monuments Sources

**Attributes** ?

Please configure Broad Types (see above) before entering attributes

1: Boundary Loss	Major Loss	▼	Clr
2: period	Modern	▼	Clr
3: size	medium	▼	Clr
4: Enclosure Type	Pre 18th Century Enclosure	▼	Clr
5: Degree of Subdivision	Enclosed	▼	Clr
6: Perimeter Morphology	Sinuuous	▼	Clr
7: Internal Morphology	Rectilinear	▼	Clr
8: Ridge and Furrow	Not Applicable/ Absent	▼	Clr

Clear All Attributes

LibraryLink: 0 Resources: 0 Tasks: 0 XY

# Cross Reference HER and Sources

OX11888: \_ ☒

Historic Landscape Character Area HOX11888

View Copy Delete Link Task Bookmark Report Menu Close

**Broad Type:** Enclosure **Full Type Code:** ENC-RE

**Type:** Reorganised Enclosures **Confidence:** Certain

**Name:**

**NGR:** Centred SP 2979 0151 (1966m by 1778m) **Map:** SP20SE **Area (Ha):** 129.60

**Config:** Broad Types / Types Attributes Rules

**Description** **Attributes** **Previous Types** **Monuments** **Sources**

**Previous Types**

Previous Broad Type	Period	Confidence	Notes
Unenclosed Land	Medieval to Post Medieval - 1066 AD? to 1600 AD	Possible	Recorded in Clanfield as enclosed closes of meadow by c.17th century.
Unenclosed - Rough Ground			
Enclosure	Post Medieval - 1600 AD? to 1839 AD	Possible	Narrow rectilinear plots shown on the 1st Edition OS and recorded as 'Marsh Closes' in Clanfield
Closes			
*			

LibraryLink: 0 Resources: 0 Tasks: 0

# Cross Reference HER and Sources

OX11888: HOX11888  
Prehistoric Landscape Character Area

View Copy Delete Link Task Bookmark Report Menu Close

Broad Type: Enclosure Full Type Code: ENC-RE  
Type: Reorganised Enclosures Confidence: Certain  
Name:   
NGR: Centred SP 2979 0151 (1966m by 1778m) Map: SP20SE Area (Ha): 129.60  
Config: Broad Types / Types Attributes Rules

Description Attributes Previous Types Monuments Sources

Associated Monuments [Get from GIS](#)

ID	Record Type	Name
▶ 8152	Monument	Undated Cropmarked Settlement Originally plotted from St Joseph AP's. Still visible on RCHME overlay
15143	Monument	Possible Post Medieval Drainage System Originally plotted from RCHME overlay
15163	Monument	Possible Later Prehistoric Linear Feature and Enclosures Identified only from RCHME overlay
*		

LibraryLink: 0 Resources: 0 Tasks: 0

# Cross Reference HER and Sources

OX11888: Historic Landscape Character Area HOX11888

View Copy Delete Link Task Bookmark Report Menu Close

**Broad Type:** Enclosure **Full Type Code:** ENC-RE

**Type:** Reorganised Enclosures **Confidence:** Certain

**Name:**

**NGR:** Centred SP 2979 0151 (1966m by 1778m) **Map:** SP20SE **Area (Ha):** 129.60

**Config:** Broad Types / Types Attributes Rules

**Description** Attributes Previous Types Monuments Sources

**Associated Sources**

ID	Specific Reference
SOX386	Map: 1797, Davis Map
SOX5645	Map: Ordnance Survey, c.1881, 1st Edition 6" Map
SOX5647	Map: Ordnance Survey, 1912-1923, 3rd Edition 6" Map
SOX5649	Map: Ordnance Survey, 2016, Master Map 1:2500
SOX5650	Photograph: 1999/2000, Aerial Photographs
SOX5653	Monograph: Victoria County History - Oxfordshire: A history of the county of Oxfordshire
*	

LibraryLink: 0 Resources: 0 Tasks: 0

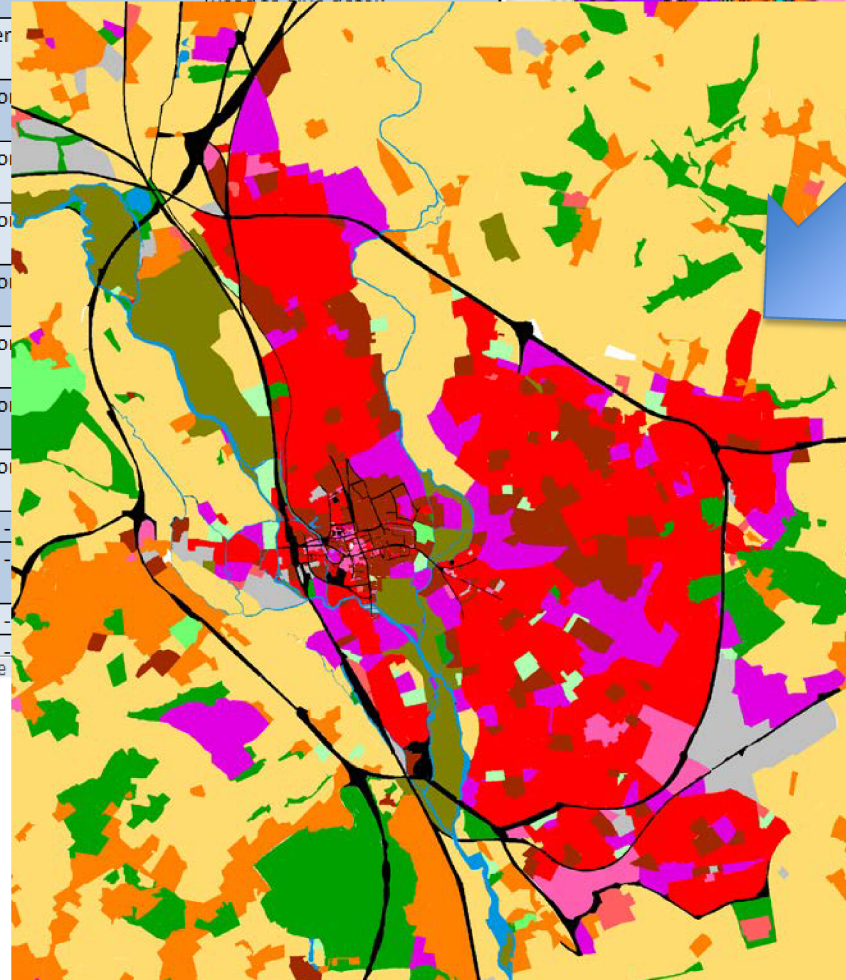
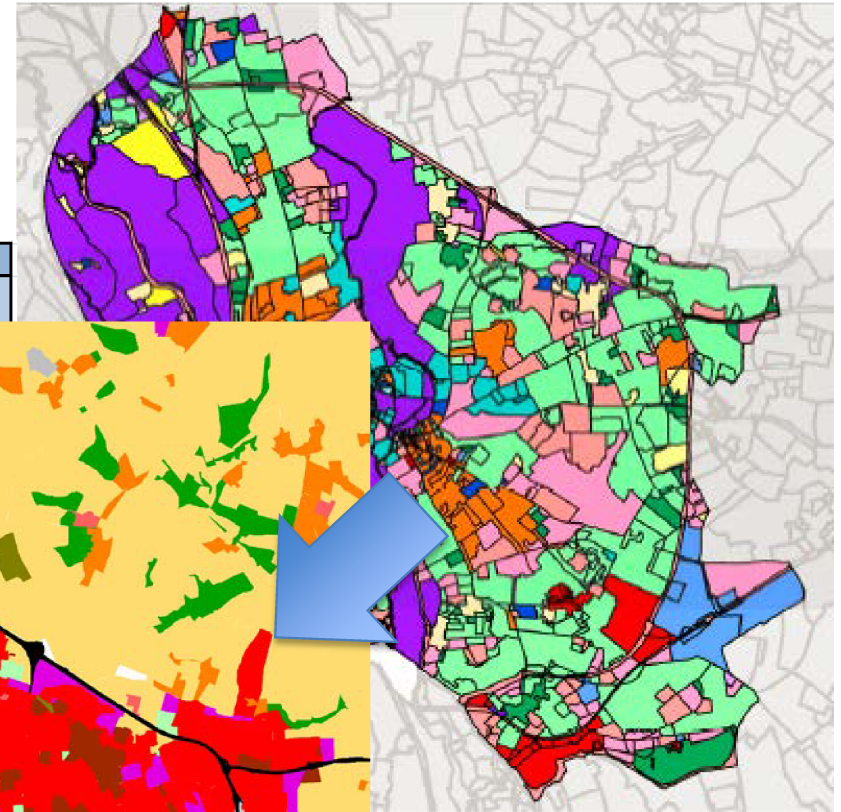




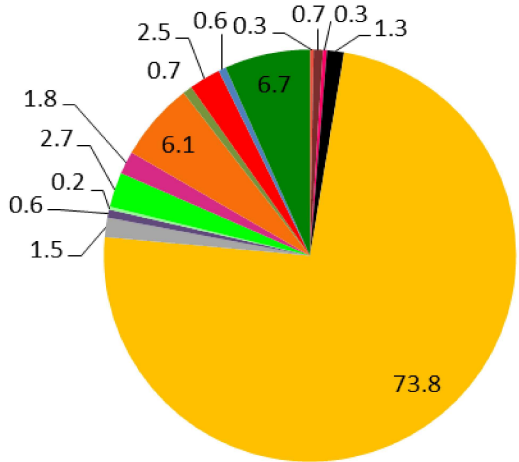
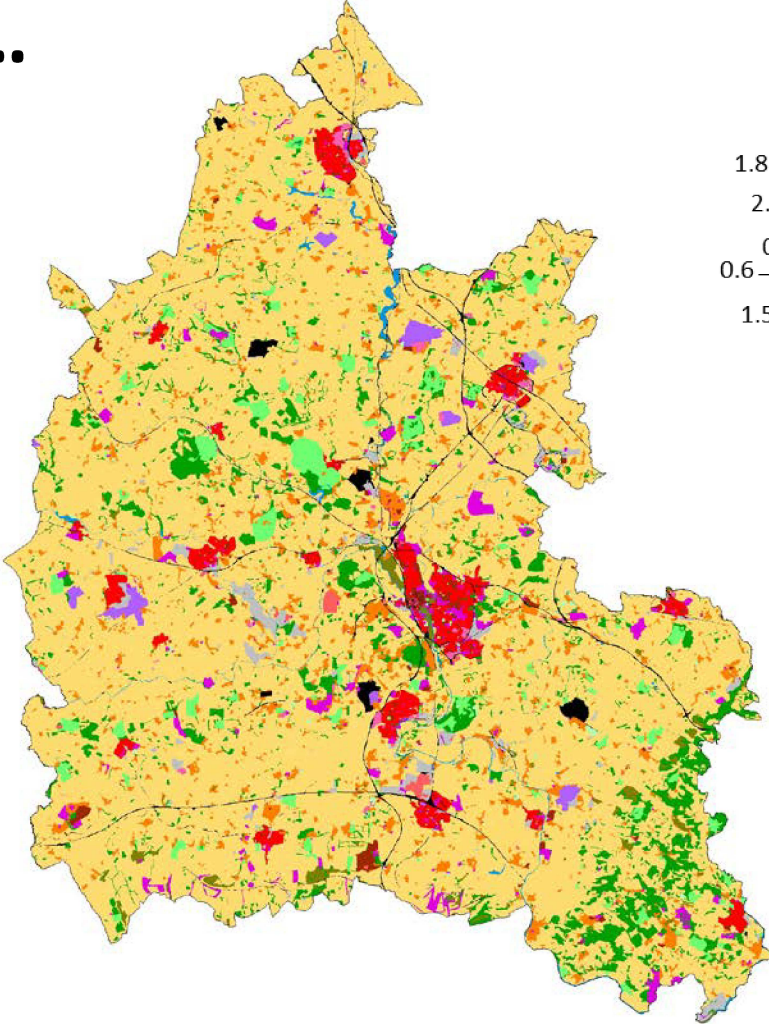
# Oxford City HLC

Oxford City	County Concordance	Notes
Settlement pre-1880	Urban Settlement - City	Date range for each polygon used to find detail
Settlement post-1880	Urban Settler	
Religious	Civil Provision Funerary	
Hospitals & Schools	Civil Provision Facility Civil Provision Facility	
Government & Civic	Civil Provision Civic Centre	
Medieval Colleges	Civil Provision Facility	
Post Medieval Colleges	Civil Provision Facility	
Universities post 1800	Civil Provision Facility	
Offices/Commercial	Commercial - Commercial -	
Business/Retail Park	Commercial - Commercial -	

Concordance Table / Oxford HLC Broad Type

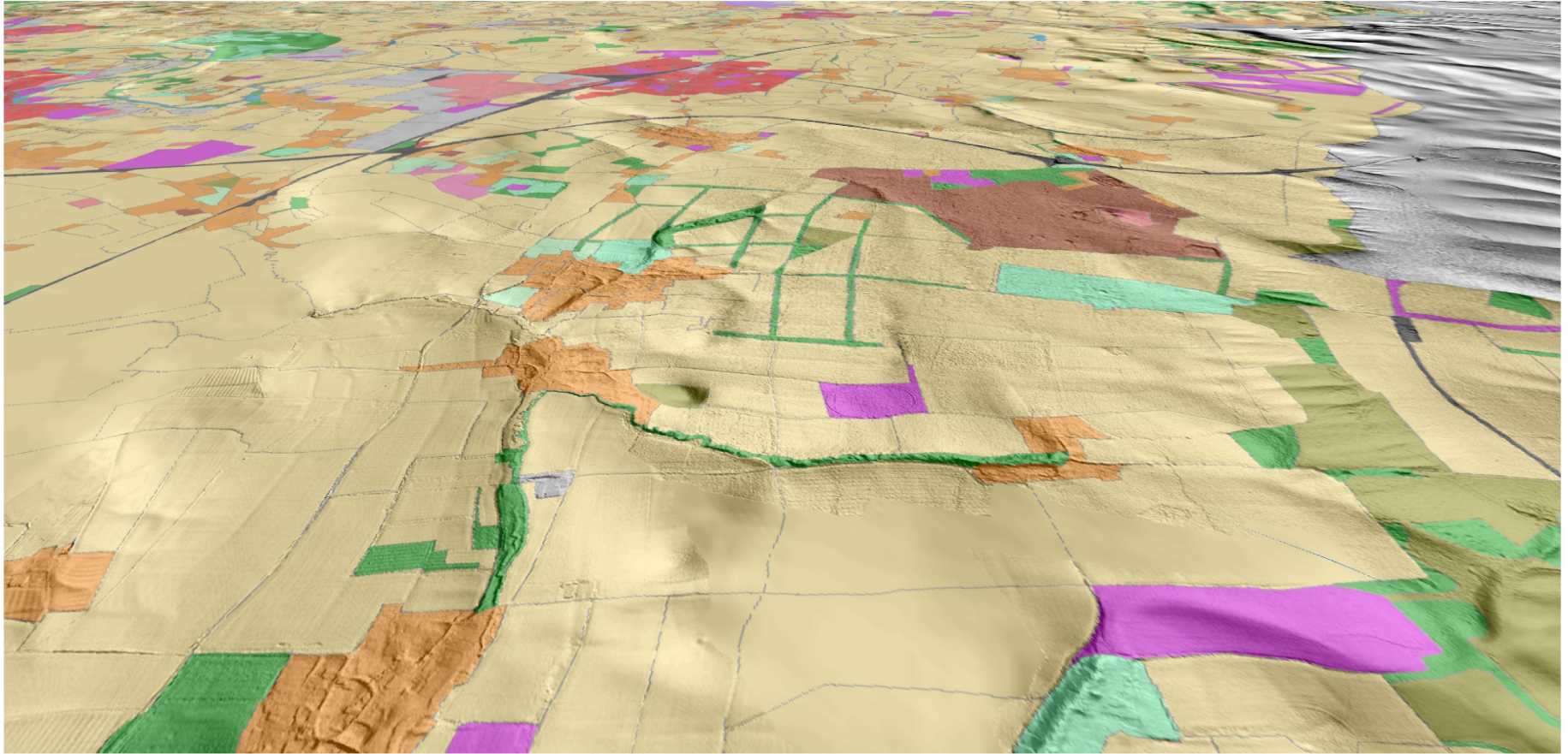


# Results...



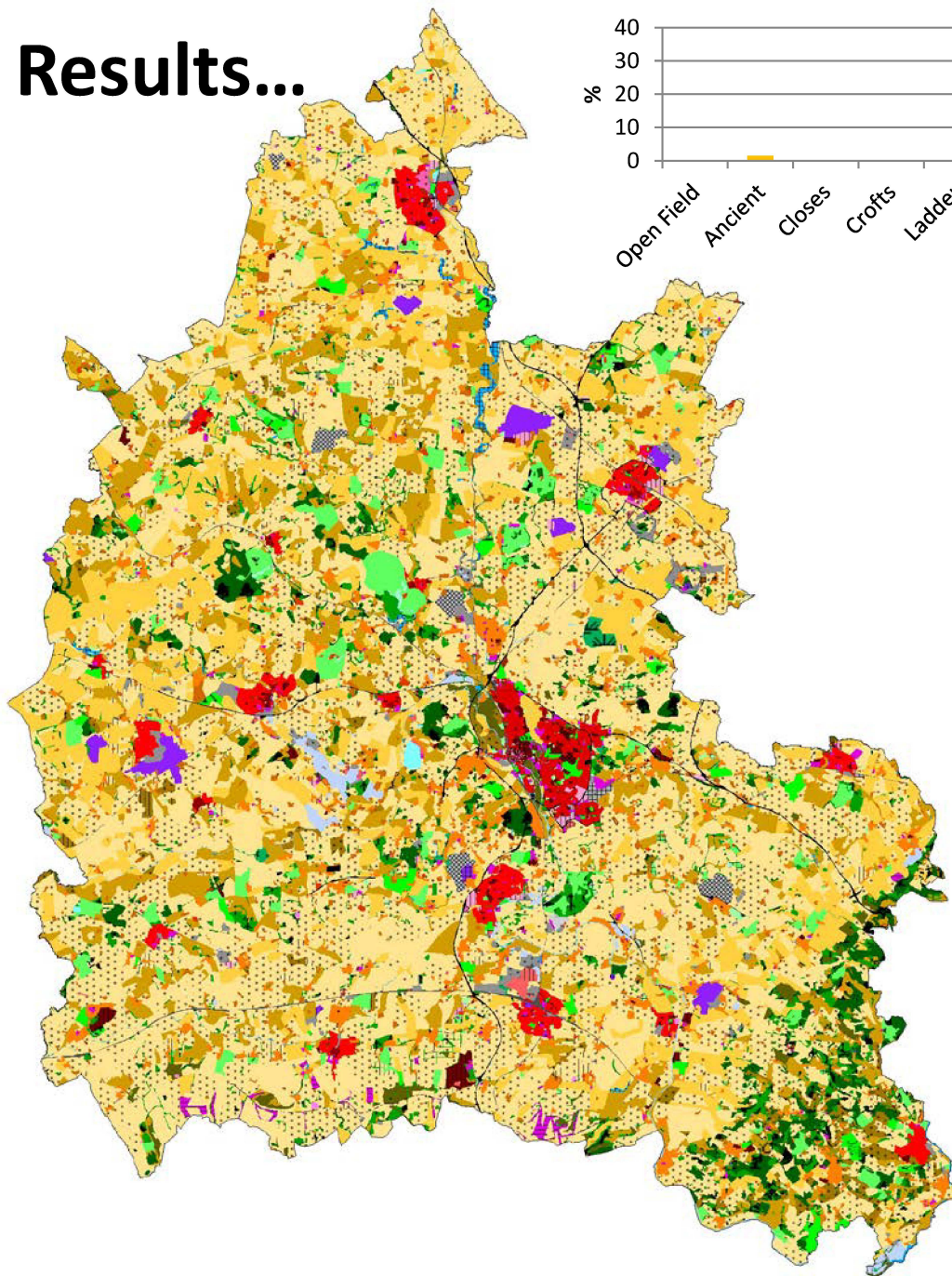
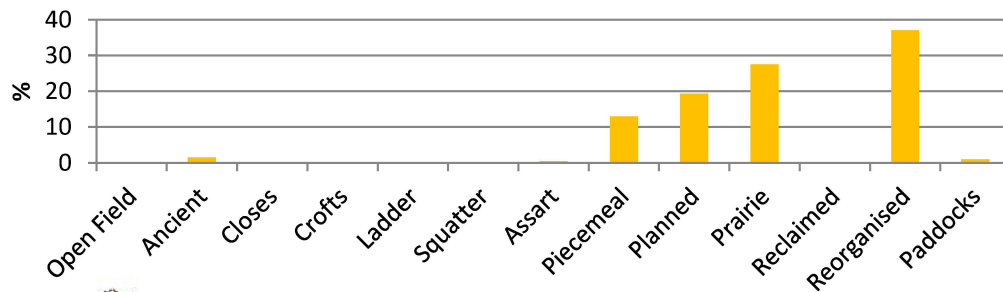
16,102 Polygons!!!

HLC BroadType					
	Civic Amenities		Industry		Rural Settlement
	Civil Provision		Military		Unenclosed Land
	Commercial		Orchards and Horticulture		Urban Settlement
	Communication		Ornamental		Water and Valley Floor
	Enclosure		Recreation		Woodland





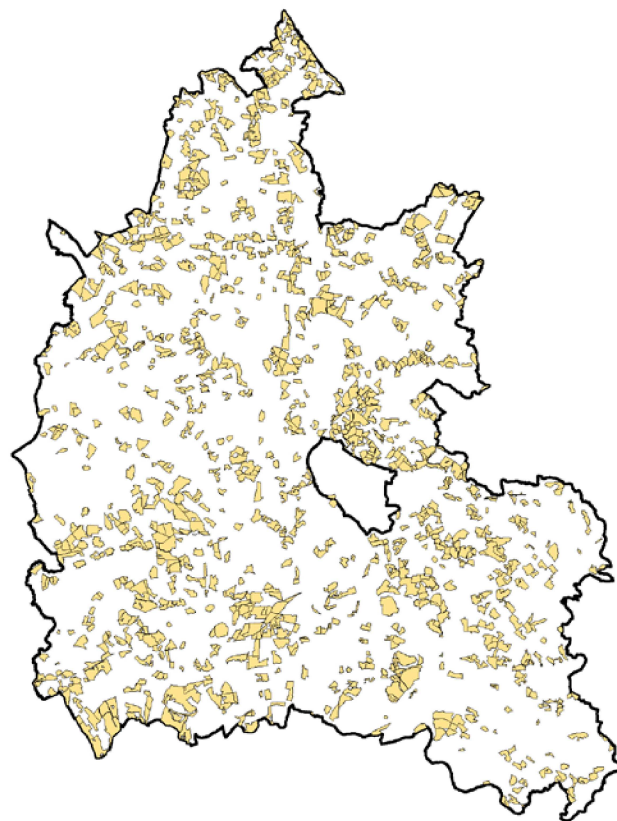
# Results...



- Open Field System
- Ancient Enclosure
- Closes
- Crofts
- Ladder Field System
- Squatter Enclosure
- Assarted Enclosure
- Piecemeal Enclosure
- Planned Enclosure
- Prairie / Amalgamated Enclosure
- Enclosed Reclaimed land
- Reorganised Enclosures
- Paddocks and Stables

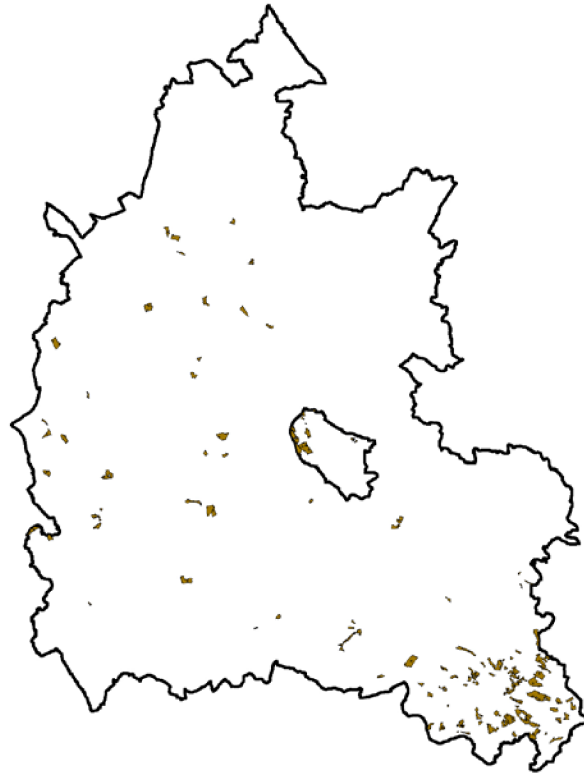


# Results... Prairie Fields



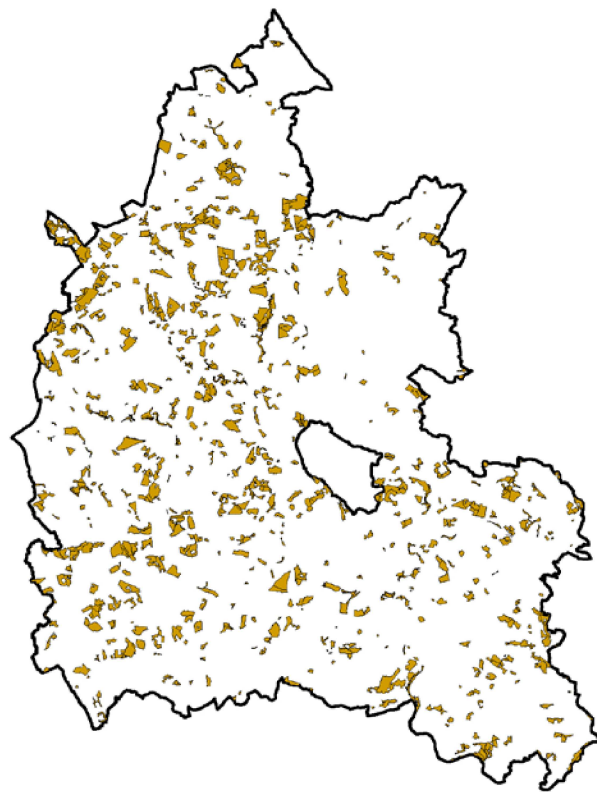


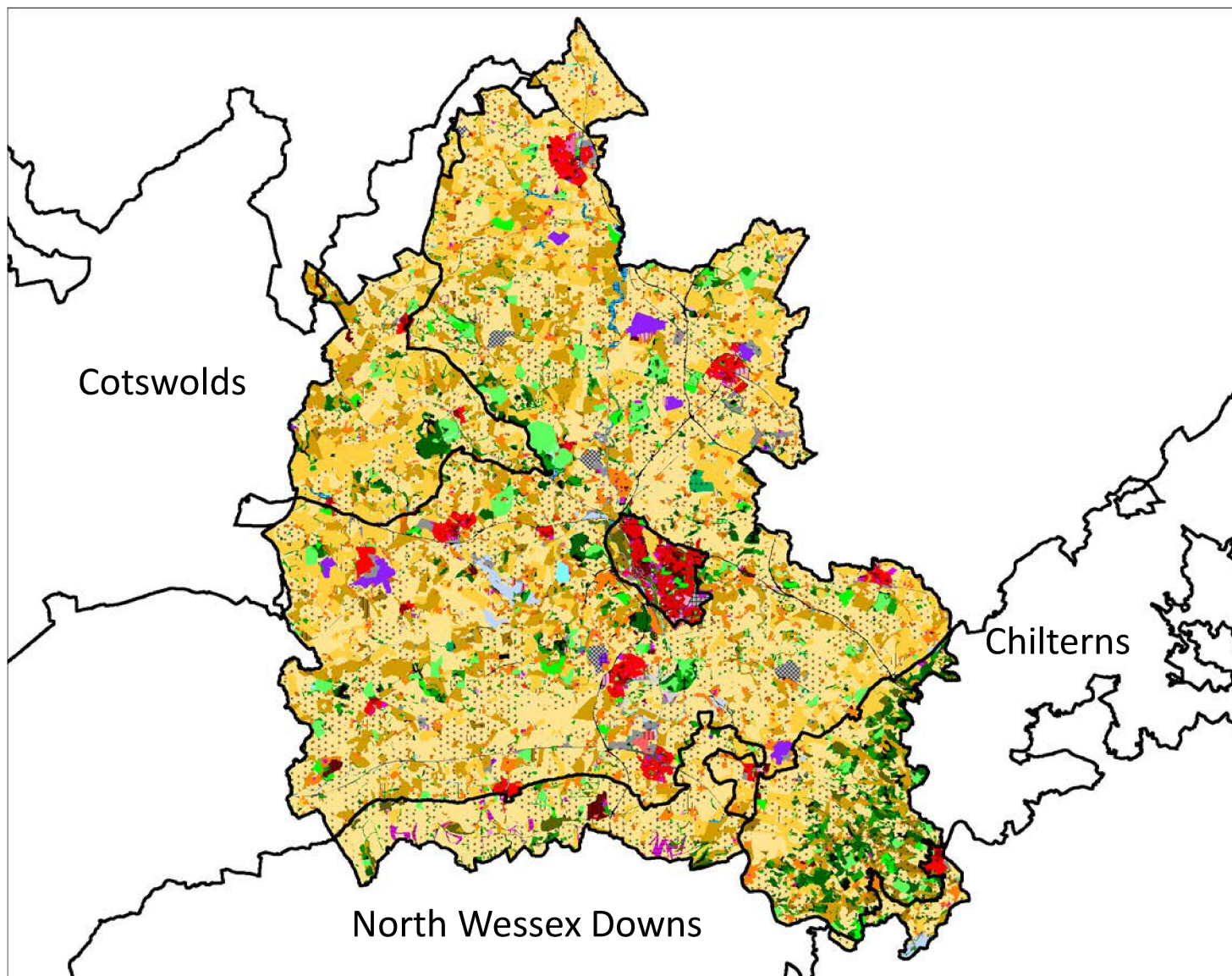
# Results...Ancient Enclosures





# Results...Piecemeal Enclosures

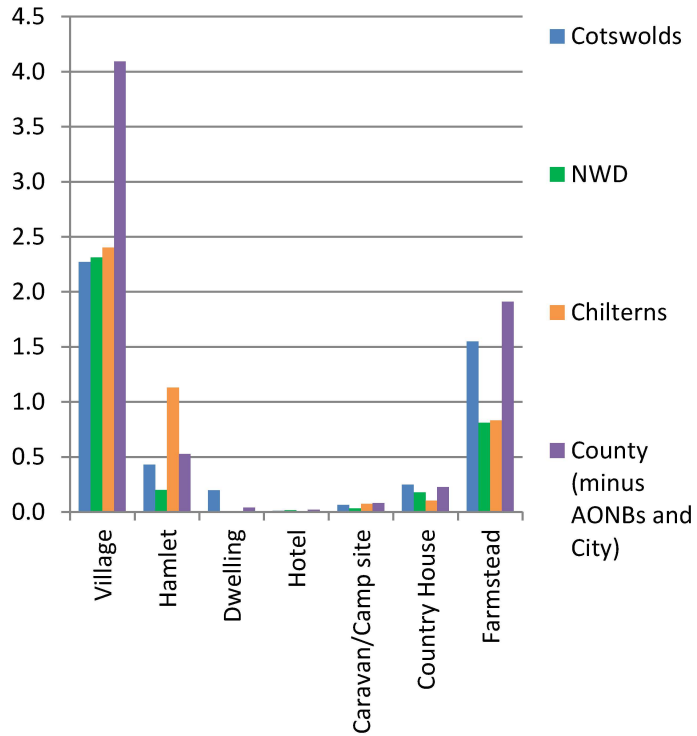




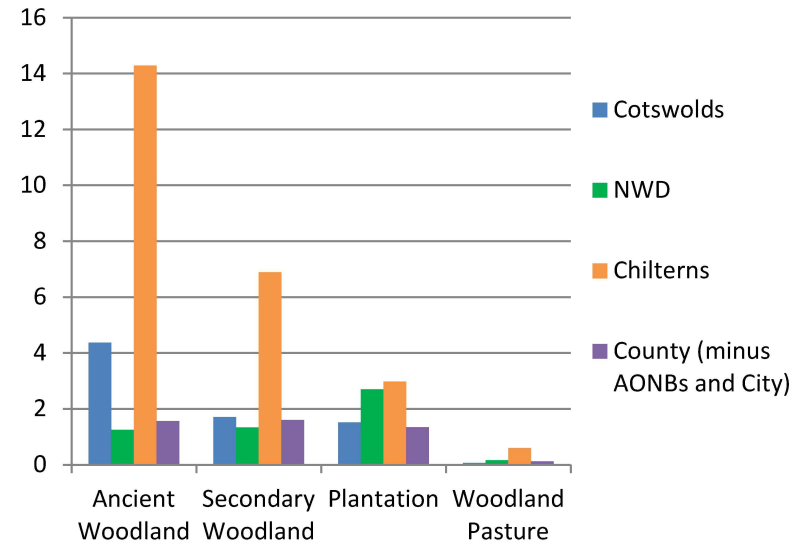


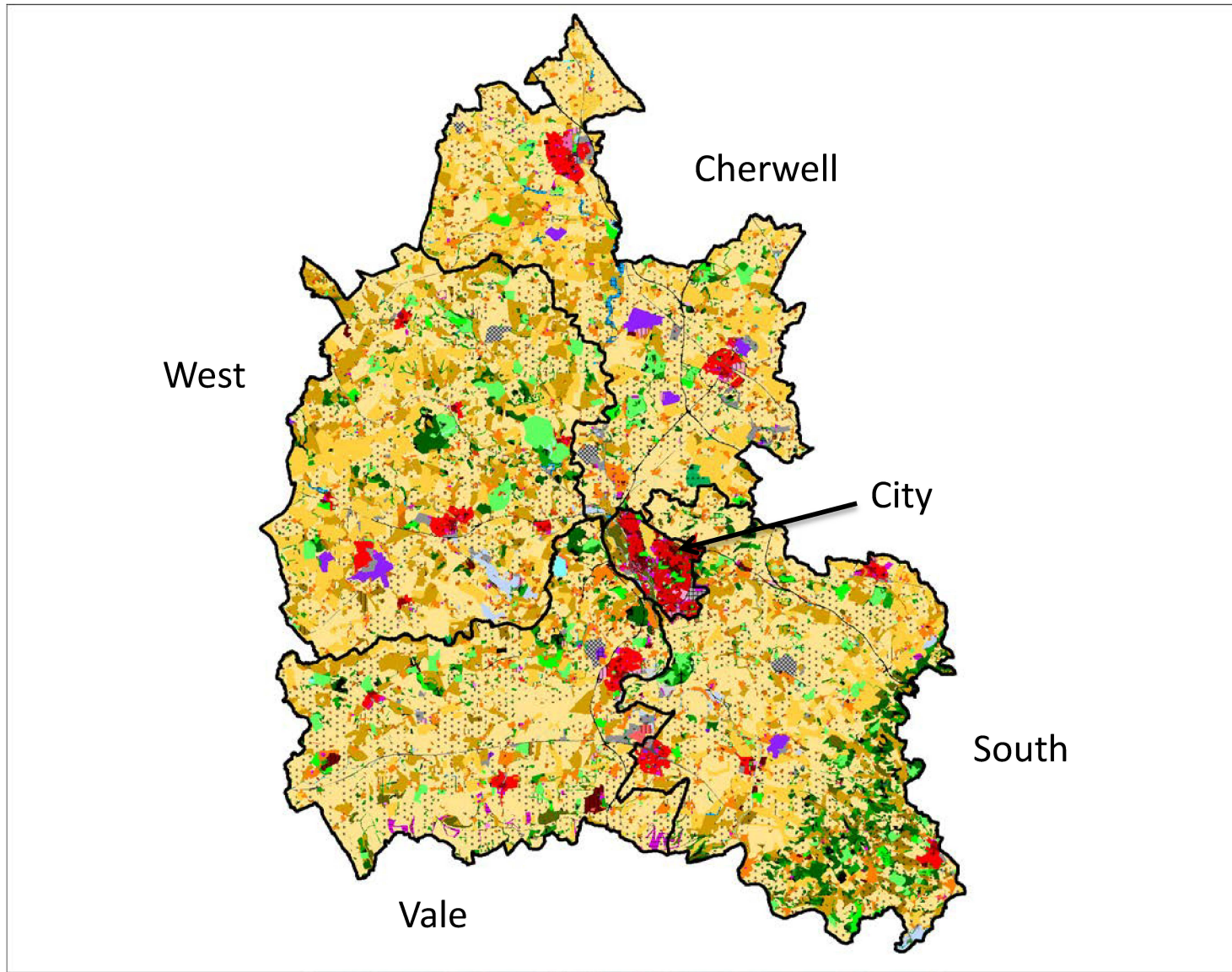


# Rural Settlement



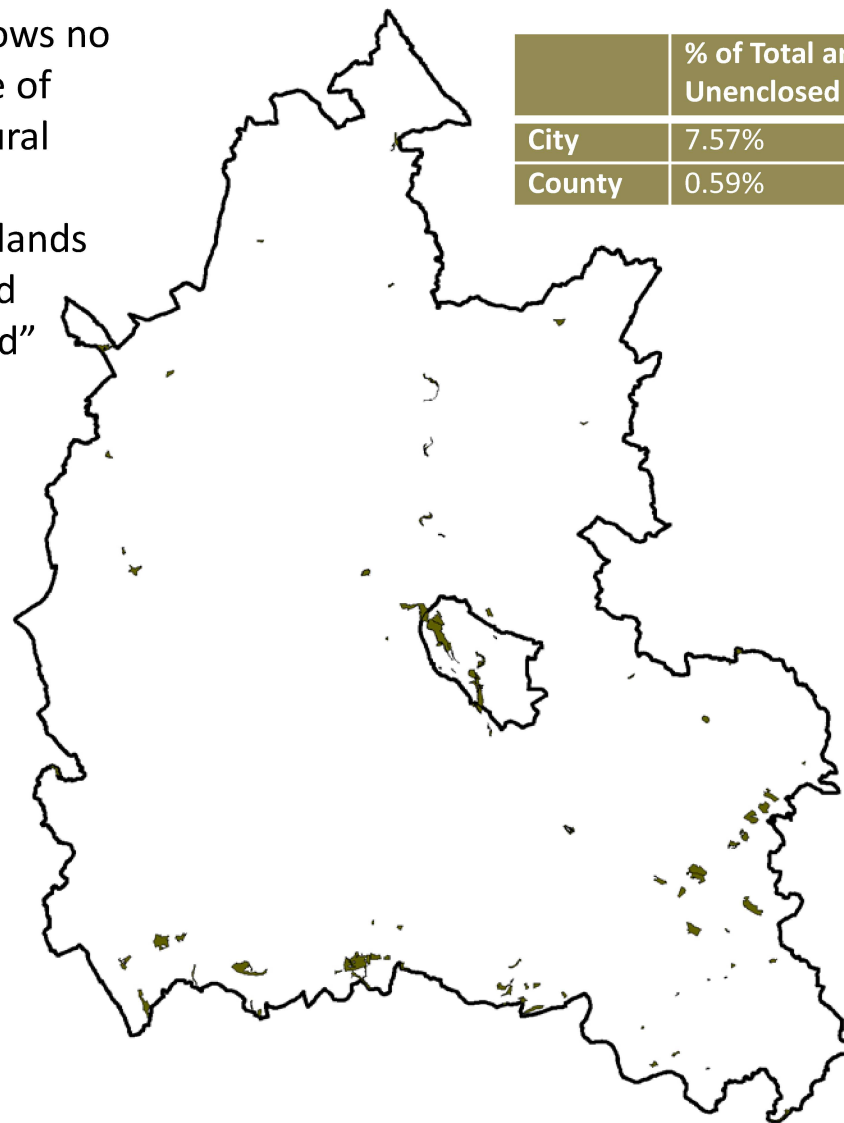
# Woodland







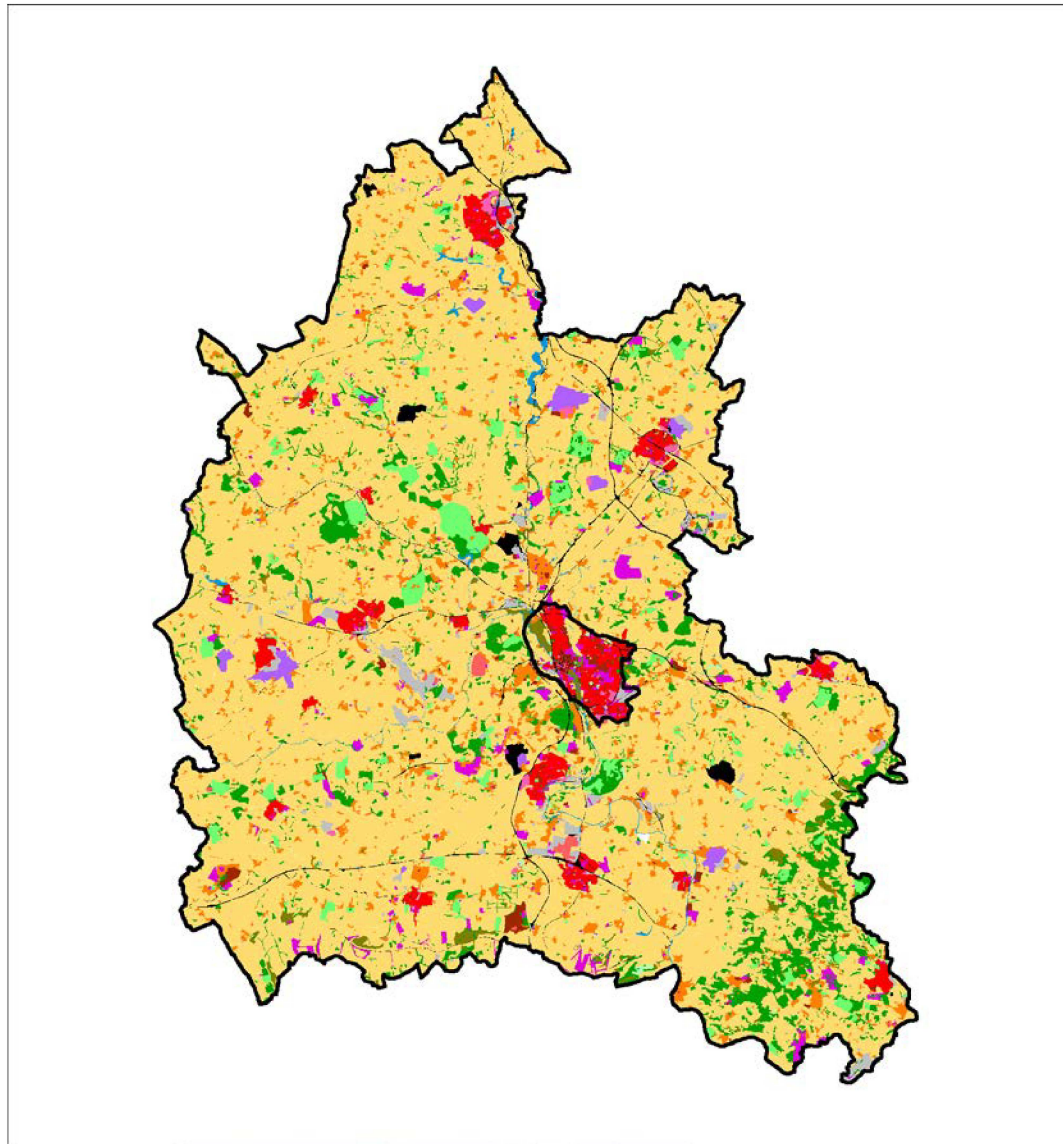
“land which shows no visible evidence of recent agricultural improvements, including downlands and unimproved common ground”



	% of Total area covered by Unenclosed – Rough Ground
City	7.57%
County	0.59%



2010

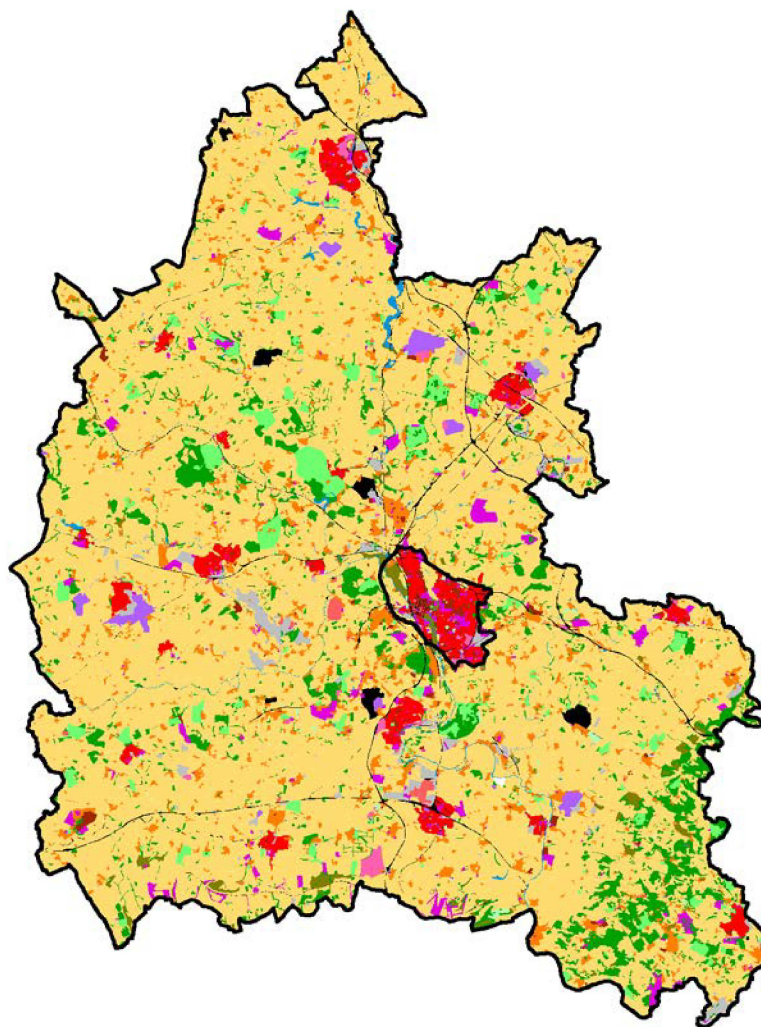


- Civic Amenities
- Civil Provision
- Commercial
- Communication
- Enclosure
- Industry
- Military
- Orchards and Horticulture
- Ornamental
- Recreation
- Rural Settlement
- Unenclosed Land
- Urban Settlement
- Water and Valley Floor
- Woodland



2010

2000

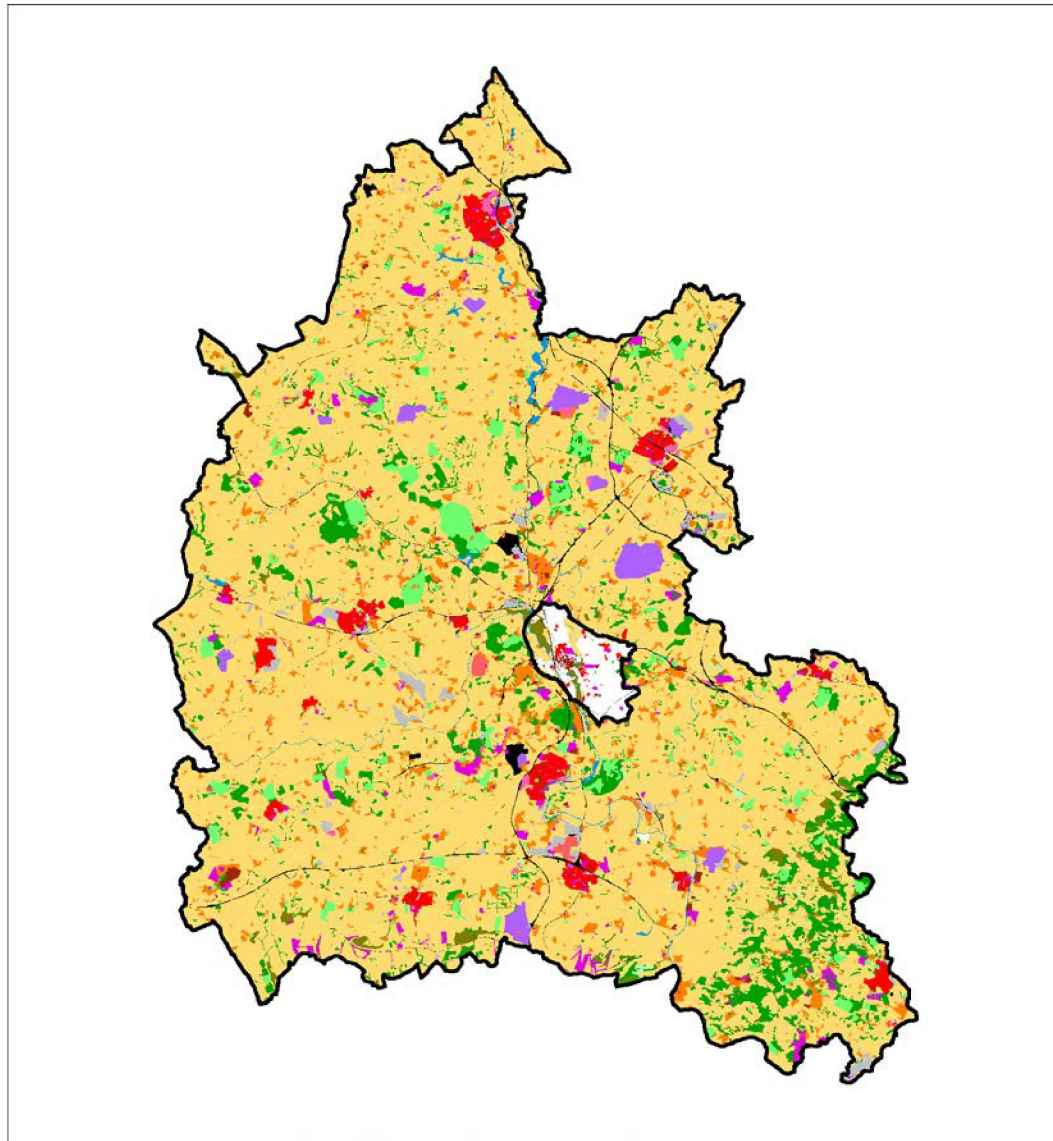




2010

2000

1922



- Civic Amenities
- Civil Provision
- Commercial
- Communication
- Enclosure
- Industry
- Military
- Orchards and Horticulture
- Ornamental
- Recreation
- Rural Settlement
- Unenclosed Land
- Urban Settlement
- Water and Valley Floor
- Woodland

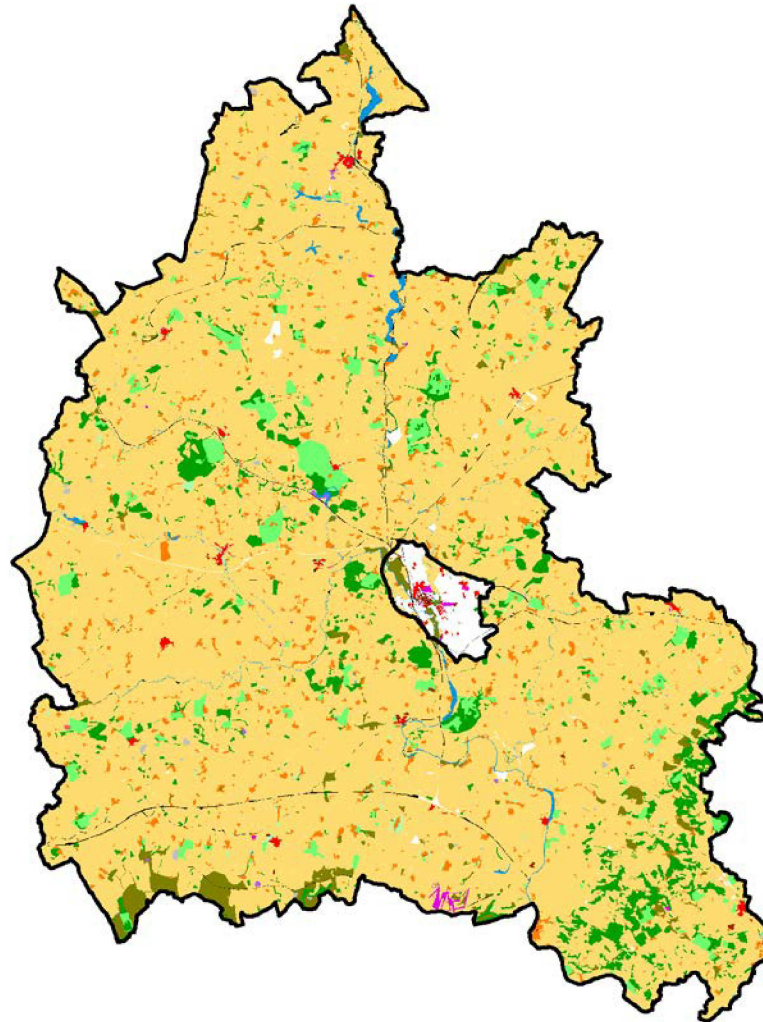


2010

2000

1922

1881



- Civic Amenities
- Civil Provision
- Commercial
- Communication
- Enclosure
- Industry
- Military
- Orchards and Horticulture
- Ornamental
- Recreation
- Rural Settlement
- Unenclosed Land
- Urban Settlement
- Water and Valley Floor
- Woodland



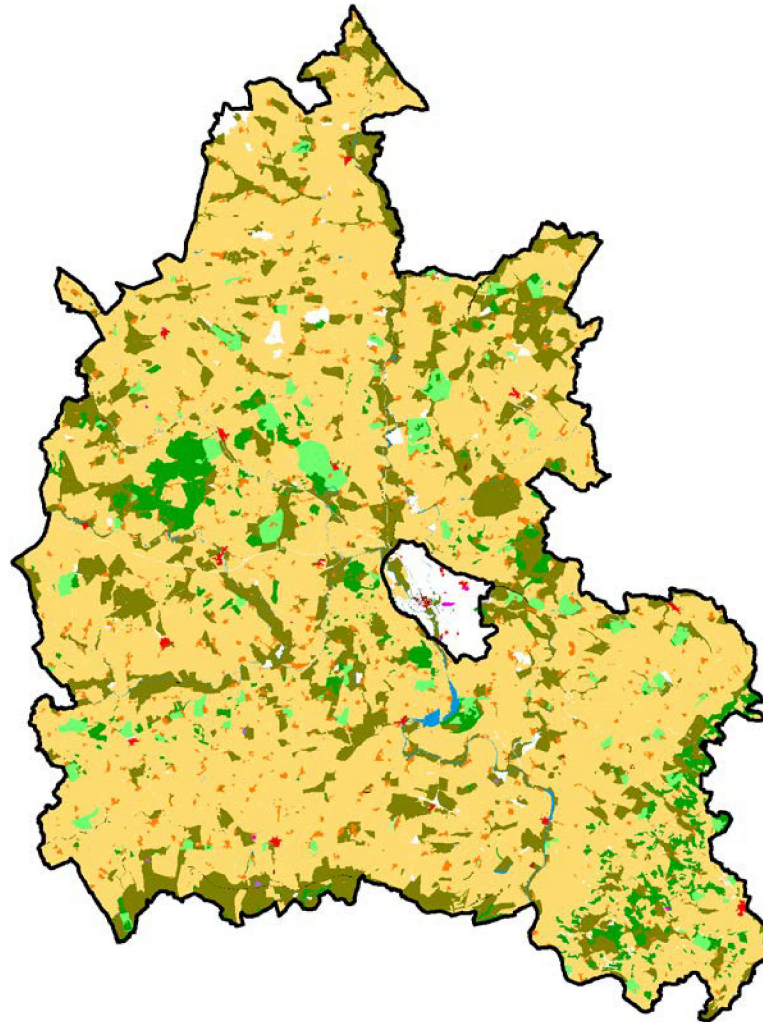
2010

2000

1922

1881

1797



- Civic Amenities
- Civil Provision
- Commercial
- Communication
- Enclosure
- Industry
- Military
- Orchards and Horticulture
- Ornamental
- Recreation
- Rural Settlement
- Unenclosed Land
- Urban Settlement
- Water and Valley Floor
- Woodland





2010

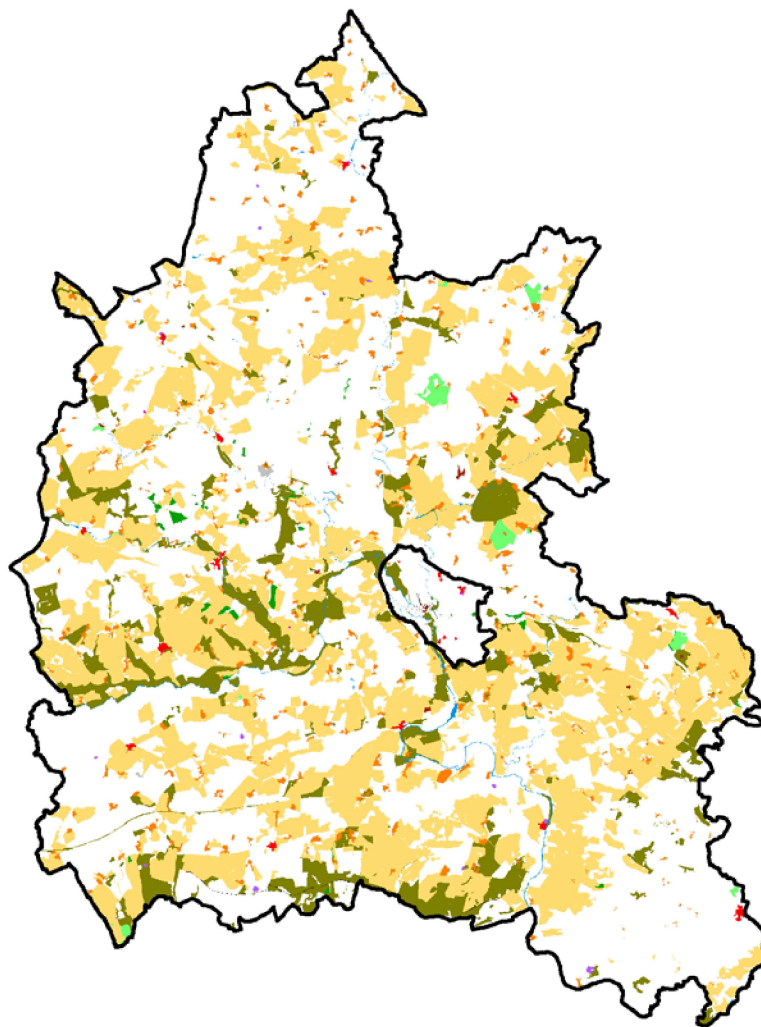
2000

1922

1881

1797

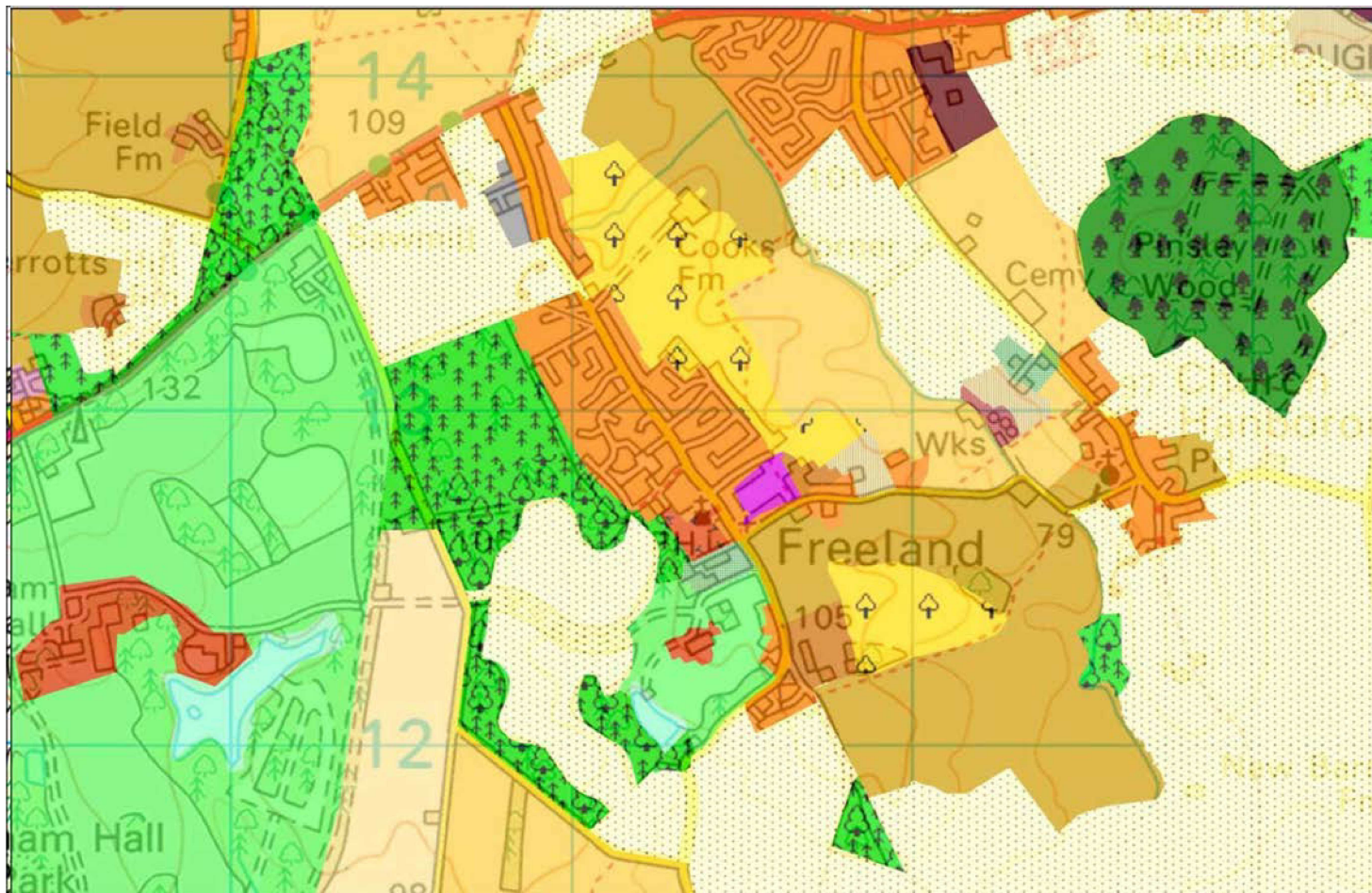
1539



- Civic Amenities
- Civil Provision
- Commercial
- Communication
- Enclosure
- Industry
- Military
- Orchards and Horticulture
- Ornamental
- Recreation
- Rural Settlement
- Unenclosed Land
- Urban Settlement
- Water and Valley Floor
- Woodland

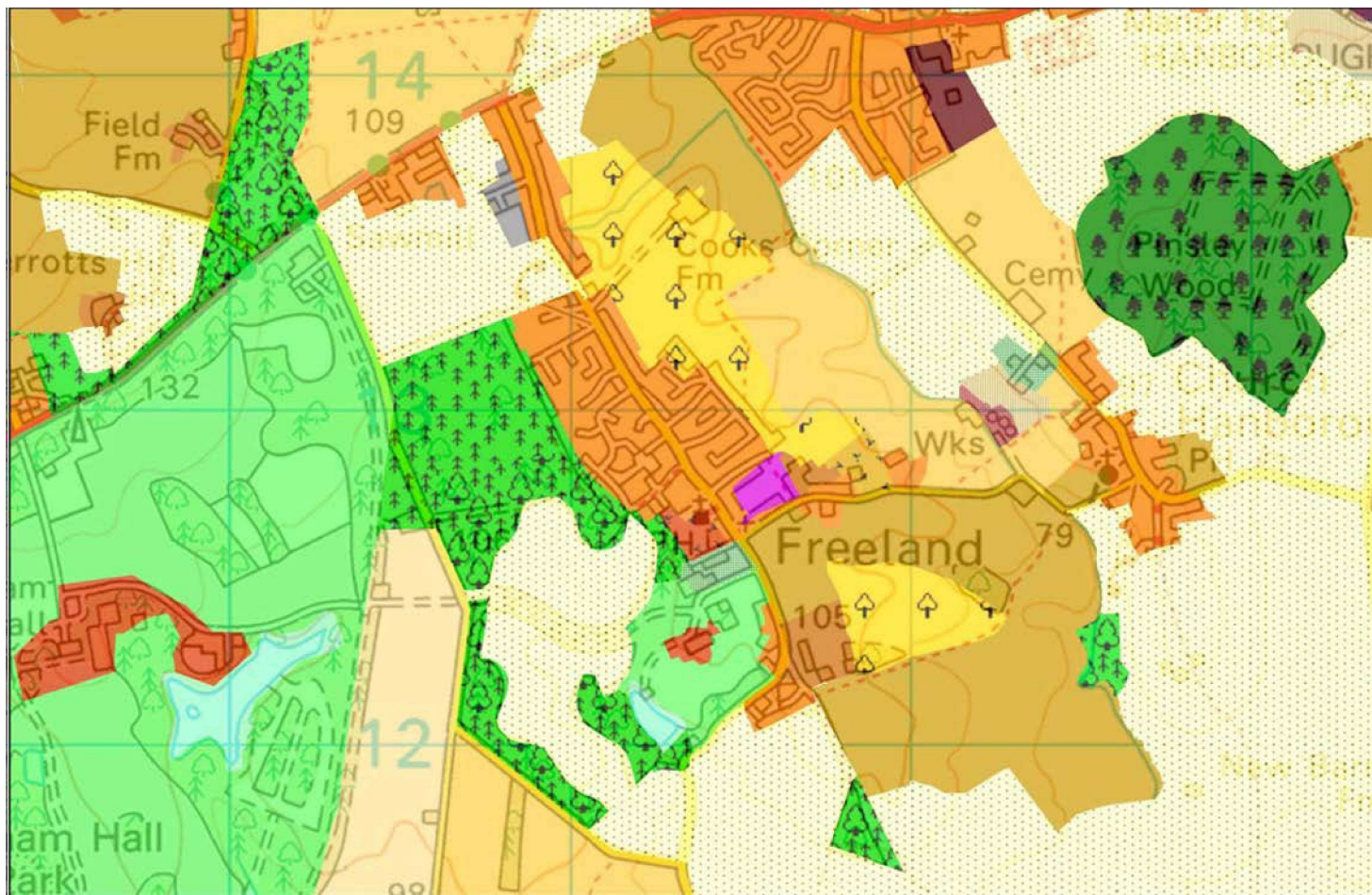


2010





2010  
1922

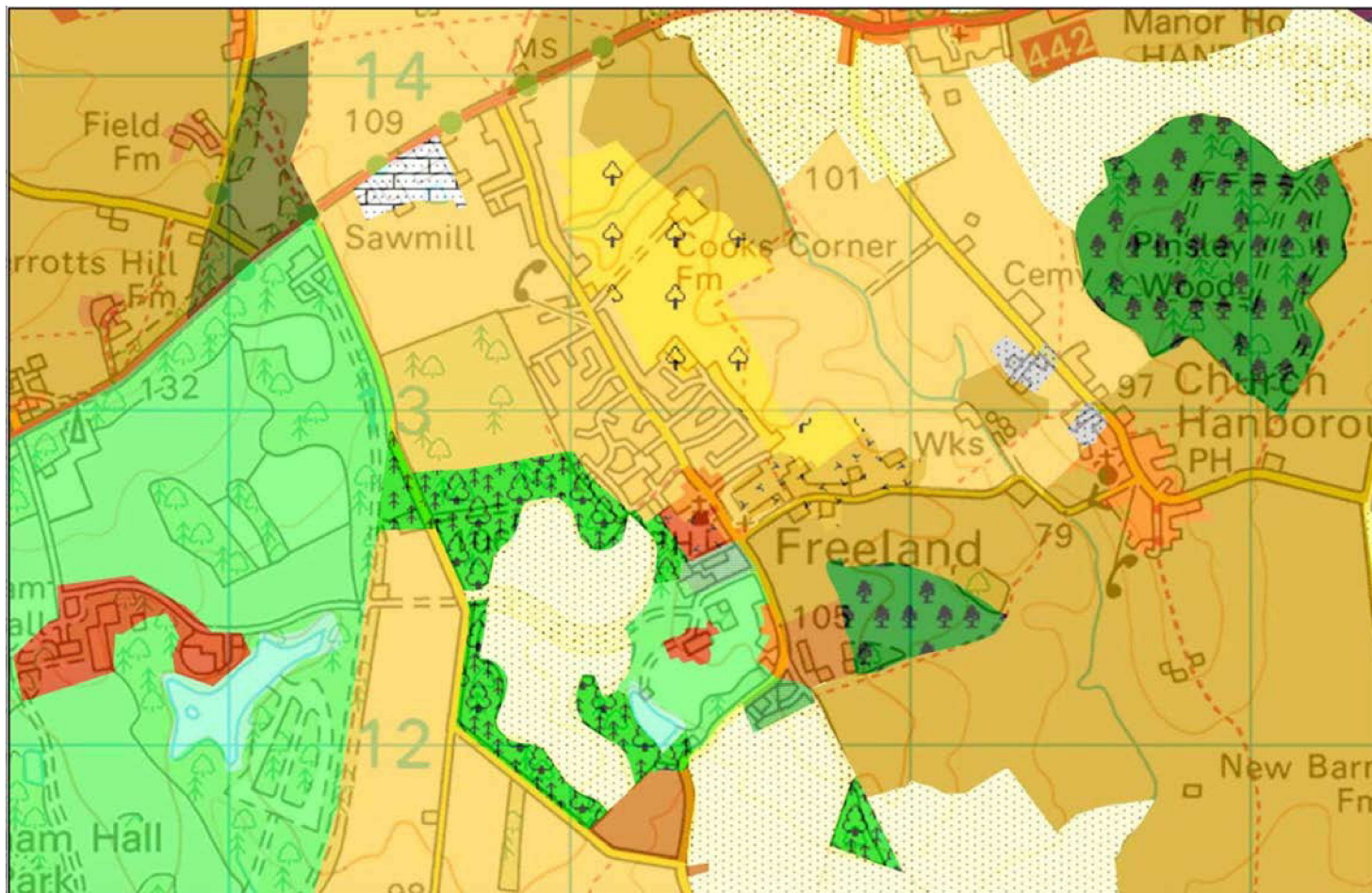




2010

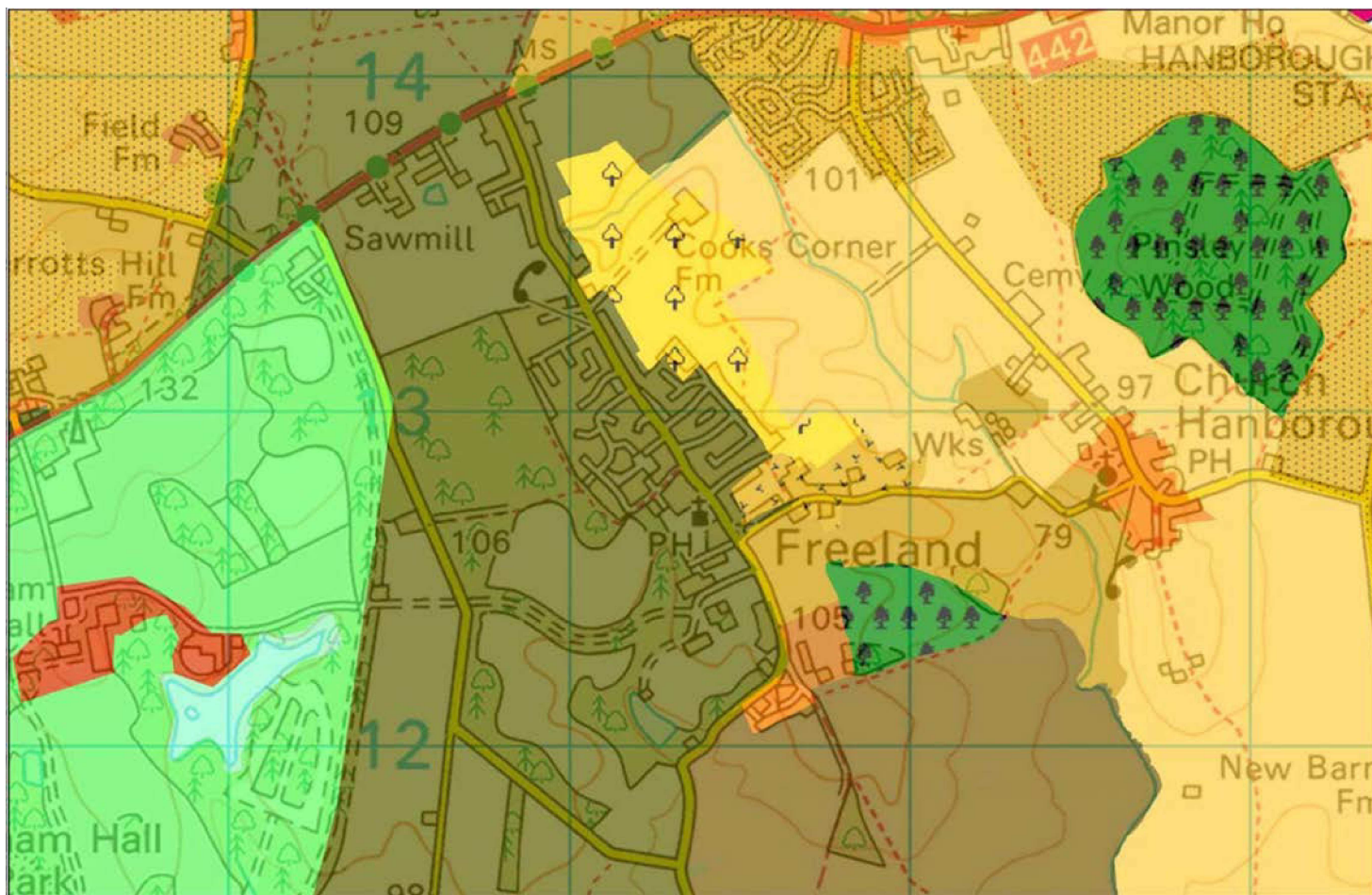
1922

1881



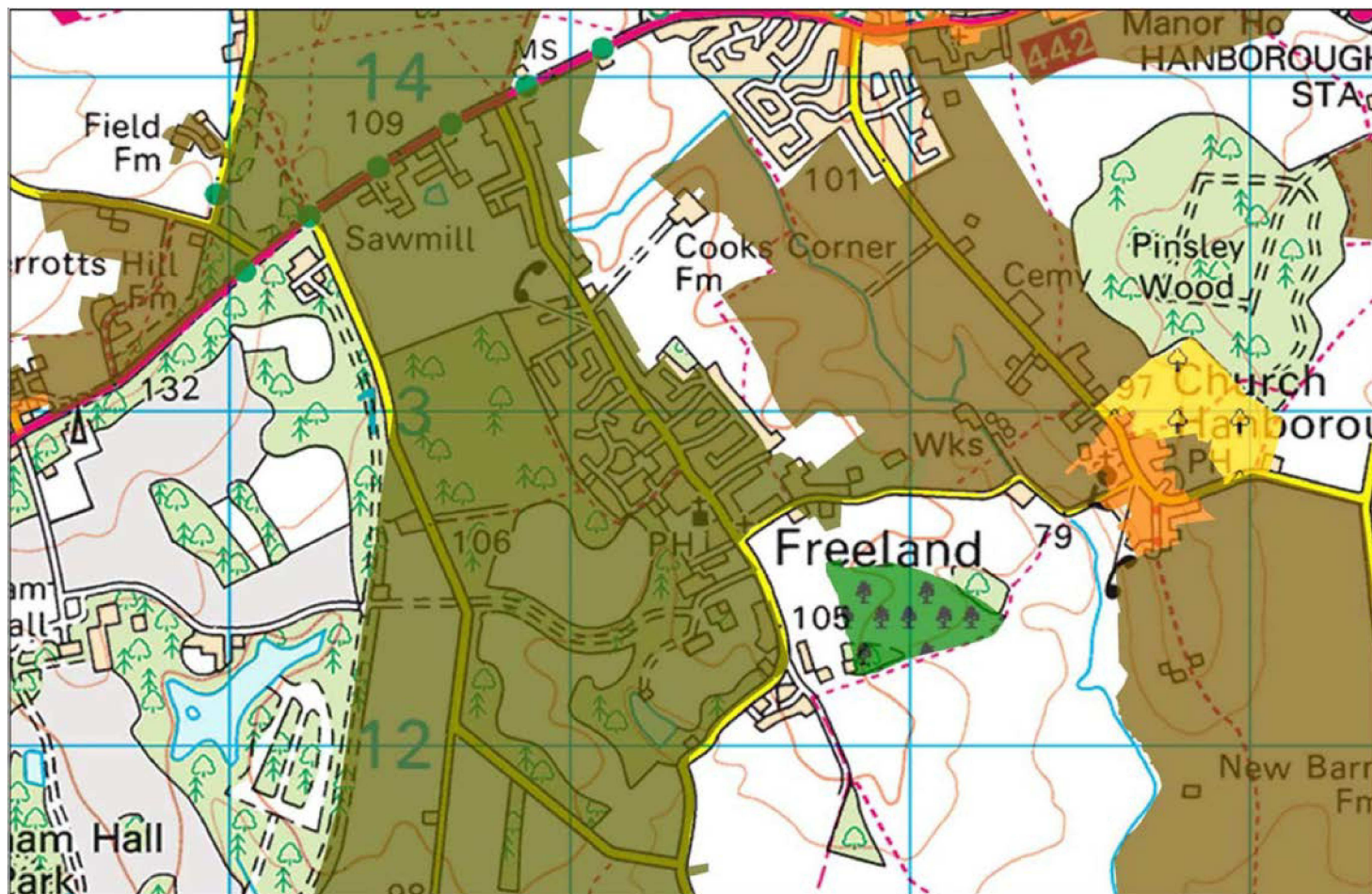


2010  
1922  
1881  
1797





2010  
1922  
1881  
1797  
1539





## Trajectory of Change

HLC Type	Area 1881 (ha)	Area 2010 (ha)	% Gain or Loss
Ancient Woodland	7747.8	7524.8	-2.9
Orchard	506.3	156.9	-69.0
Rural Settlement	5297.0	10584.2	99.8
Urban Settlement	122.4	4124.6	3268.6

# Case Studies

- 1. AONB Comparative Study**
- 2. Landscape Character Assessment Survey**
- 3. Urban-Rural Fringe Sensitivity to Urban Development**
- 4. HER and HLC Correspondence**
- 5. City and County Comparisons**





# % Gain or Loss since between 1881 and 2010

## Rural Settlement

	Cotswolds	NWD	Chilterns	County
Village	74.1	71.3	166.4	109.5
Hamlet	7.9	70.5	120.1	58.7
Dwelling	20.7			71.5
Hotel	0.0	0.0		143.7
Caravan/Camp site	∞	∞	∞	∞
Country House	15.0	14.0	90.1	-6.0
Farmstead	32.0	23.9	55.3	40.9

## Woodland

	Cotswolds	NWD	Chilterns	County
Ancient Woodland	0.0	-0.4	-2.5	-4.4
Secondary Woodland	66.6	22.2	50.7	68.8
Plantation	288.8	205.2	652.4	103.8
Woodland Pasture	∞	∞	23.6	-44.2

**What Value do you place on different parts of Oxfordshire's landscape ?**

Let me know if you want to take part in the public survey

# Case Studies

- 1. AONB Comparative Study**
- 2. Landscape Character Assessment Survey**
- 3. Urban-Rural Fringe Sensitivity to Urban Development**
- 4. HER and HLC Correspondence**
- 5. City and County Comparisons**



# The Historic Landscape Character of Roman Villas in Oxfordshire

HLCType	Count	%
Ancient Enclosure	3	3.66
Enclosure - Paddocks and Stables	1	1.22
Piecemeal Enclosure	10	12.20
Planned Enclosure	11	13.41
Prairie / Amalgamated Enclosure	14	17.07
Reorganised Enclosures	22	26.83
Industry -Extractive Works	1	1.22
Industry -Flooded Extractive pits	1	1.22
Orn -Domestic Garden	1	1.22
Managed Archaeological Site	1	1.22
Recreation - Golf Course	1	1.22

HLCType	Count	%
Recreation -Sports Facilities	1	1.22
Rural - Country House	2	2.44
Rural - Hamlet	1	1.22
Rural - Village	3	3.66
Rural -Farmstead	3	3.66
Unenclosed -Rough Ground	1	1.22
Urban - Town	2	2.44
Woodland - Ancient Woodland	1	1.22
Woodland -Secondary Woodland	1	1.22
Woodland -Woodland Pasture	1	1.22

# Case Studies

1. **AONB Comparative Study**
2. **Landscape Character Assessment Survey**
3. **Urban-Rural Fringe Sensitivity to Urban Development**
4. **HER and HLC Correspondence**
5. **City and County Comparisons**

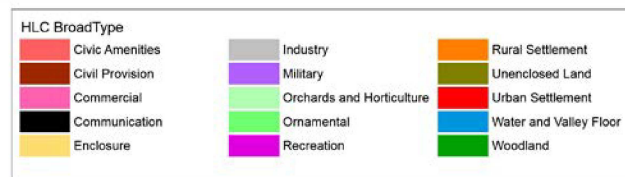
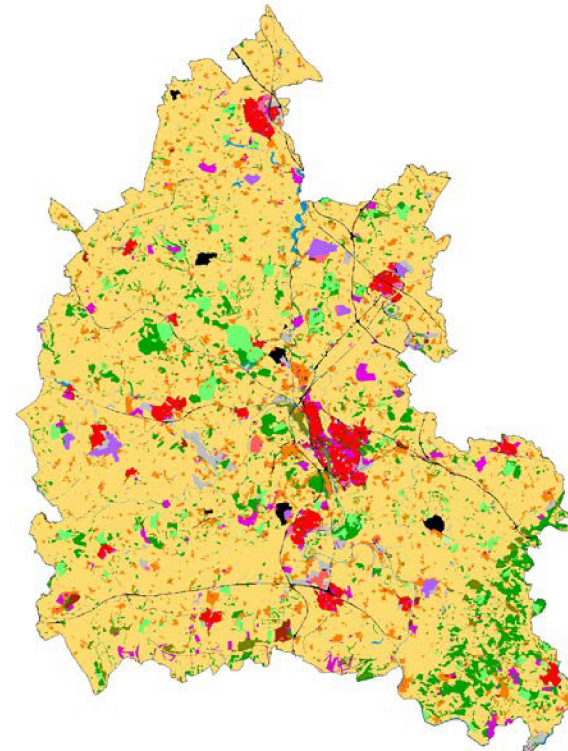


# <https://www.oxfordshire.gov.uk/cms/content/oxfordshire-historic-landscape-characterisation-project>

Info Tool

HLCUID:	HOX11894
Name:	
FullTypeCode:	ENC-AM
BroadType:	Enclosure
HLCType:	Prairie / Amalgamated Enclosure
YearFrom:	1914
YearTo:	1999
Status:	
Summary:	
Description:	Significant boundary loss since the 3rd Edition OS. The 1st - 3rd Edition OS Map
Period:	Modern
CreatedBy:	31/05/2016 abi.tompkins (Abi Tompkins)
AmendedBy:	01/06/2016 abi.tompkins (Abi Tompkins)
Size:	medium
SettlementNature:	
PerimeterMorph:	Sinuous
DegreeOfSubdivision:	Enclosed
BoundaryLoss:	Major Loss
RidgeAndFurrow:	Not Applicable/ Absent
InternalMorph:	Straight
WoodlandForm:	
WaterAndValleyForm:	
WoodlandMakeUp:	
SettlementForm:	
EnclosureType:	Flood plain / Enclosure of river meadow
SettlementType:	
CivilAmenitiesType:	
CommercialType:	
CivilProvisionType:	

<< >> List HLC



abi.tompkins@oxfordshire.gov.uk



# <https://www.oxfordshire.gov.uk/cms/content/oxfordshire-historic-landscape-characterisation-project>

<b>UID</b>	<b>Name</b>	<b>Full Type Code</b>
HOX13812		ENC-RE
<b>Broad Type</b>	<b>Type</b>	<b>Confidence</b>
Enclosure	Reorganised Enclosures	Certain
<b>Period</b>	Modern - 1922 AD to 1999 AD	

#### Previous Types

<b>Previous Broad Type</b>	<b>Previous Type</b>	<b>Confidence</b>
Enclosure	Piecemeal Enclosure	Probable
Enclosure	Post Medieval - 1540 AD? to 1797 AD	
Enclosure	Piecemeal Enclosure	Probable
Enclosure	Post Medieval - 1798 AD to 1876 AD	
Enclosure	Open Field System	Possible
	Medieval - 1066 AD? to 1539 AD?	

#### Full Description

An area of land immediately west of Bampton along Clanfield Road. In the 20th century a number of internal boundaries were removed and new ones were created in association with the newly built Danford Lodge and adjacent houses. The perimeter of the land, however, is the same as that shown on the 1st Edition OS. These 19th century fields were small and irregular and may have subdivided the much larger field shown here by Davis. However, the irregularity of these fields which is quite distinct from those around them may indicate that these fields have been a unit for some time and that Davis neglected to record them. Certainly, ridge and furrow visible on the LIDAR supports an earlier date for these fields as they appear to lie within one of the 19th century fields quite neatly.

<b>National Grid Reference</b>	<b>Area (Hectares)</b>	
Centred SP 3060 0286 (804m by 243m)	SP30SW	9.55

#### Attributes

<b>Type</b>	<b>Value</b>
Boundary Loss	Major Loss
Period	Modern
Size	small
Degree of Subdivision	Enclosed
Perimeter Morphology	Irregular
Internal morphology	Semi-straight
Ridge and Furrow	Reversed S shape Ridge and Furrow

#### Sources

Graphic material: Environment Agency. Environment Agency LIDAR Image.

Map: 1797. Davis Map.

Map: Ordnance Survey. 1912-1923. 3rd Edition 6" Map.

Map: Ordnance Survey. 2016. Master Map 1:2500.

Map: Ordnance Survey. c.1881. 1st Edition 6" Map.

Monograph: Victoria County History - Oxfordshire: A history of the county of Oxfordshire.

Photograph: 1999/2000. Aerial Photographs.

**Associated Monuments - None**

[abi.tompkins@oxfordshire.gov.uk](mailto:abi.tompkins@oxfordshire.gov.uk)





<https://www.oxfordshire.gov.uk/cms/content/oxfordshire-historic-landscape-characterisation-project>



Thank you for listening!

[abi.tompkins@oxfordshire.gov.uk](mailto:abi.tompkins@oxfordshire.gov.uk)