



Fig. 4. Aerial photograph of the Palace from the east. The cover building over the North Wing of the Palace is clearly visible, and the location of our excavations in the field between the Palace and the A27 at the bottom.



Fig. 5. Aerial photograph of Chichester Harbour from the north; the road at bottom left is the A27. The Palace and our excavation site lie in the centre of the picture between the A27 and the open water.



Fig. 14. Robbie and Helen plan the southern walls of Building 3 in 1995.



Fig. 46. The south-east corner of Building 3 (context 222); the line of the foundations in this area was heavily robbed in antiquity



Fig. 50. Don, Annie and Richard take a closer look at the western wall of Building 3 in 1997.



Fig. 81. Nearly complete vessel found in the linear slot of Phase AD.



Fig. 92. David getting wet excavating the deposits in the bottom of the stream in 1997.



Fig. 121. Mollie (top) and Annette on the floor of the central pit in 1996; Mollie had excavated with Alec Down on the site in 1983.



Fig. 120. A typical piece of greensand used to face the walls of Building 3, and a tegula and imbrex from the filling of the central pit of Phase AH.



Fig. 123. Not a fake photo! Volunteers gawp as the first indications of the rough flagged floor of the central pit are revealed in 1996; Sandy is in the green T-Shirt.

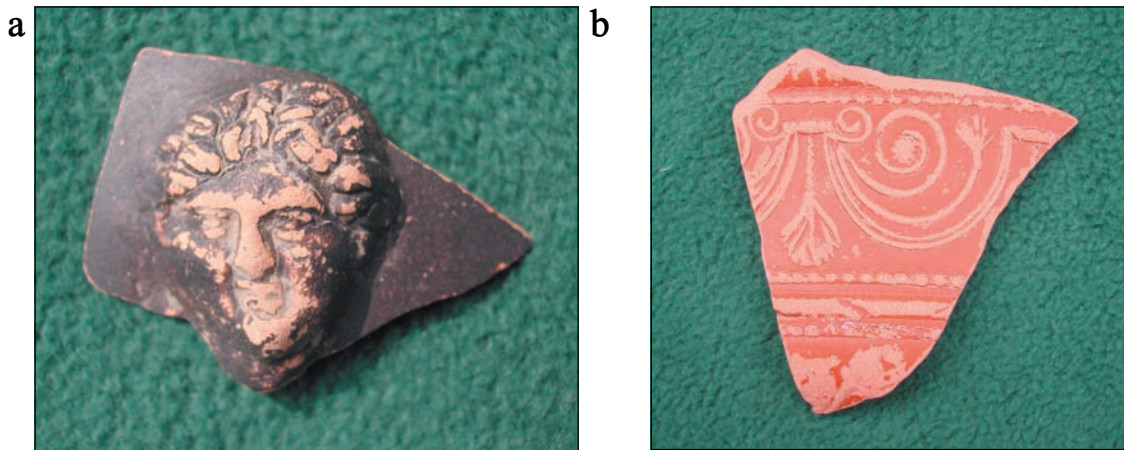


Fig. 187. a) Small bust of Pan from the midden in Area B – number 21 in the Decorated Samian Catalogue; b) Sherd of Form 29 samian from the flint road of Phase AE – number 2 in the Decorated Samian catalogue.



114. David looks down at the chalk floor (600,608; Phase AE) over the robbed-out end of the northern boundary wall.



Fig. 190. Arretine ware from the ditch and associated ground surface; note the graffiti TV, presumably the initials of the owner of this cup – SF 11115.



Fig. 233. Polychrome and ground glass fragments – numbers 1,2, and 4 in the Glass Catalogue.



Fig. 237. Intaglio 1. A racehorse, with behind it a palm of victory.



Fig. 238. Intaglio 2. An iron ring with an intaglio depicting a lion with the head of an animal in its jaws.