

Fig. 2.

R. N., Photo.

The City Wall at the Kaleyards.

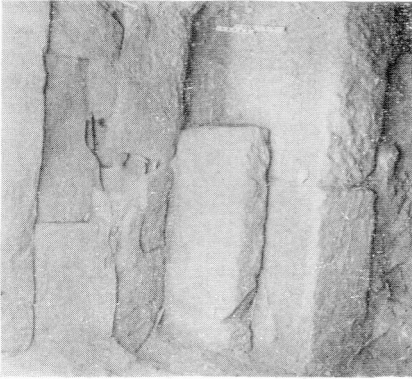


Fig. 1.

Fig. 1. The lower courses of the Roman fortress wall from a section made in advance of the Roman masonry marked "A" in Fig. 2. For complete section see text fig. 1.

Fig. 2. The structural remains of the Edwardian Drum Tower at the base of the City Wall, and at "A" two courses of the Roman wall partly exposed.





R. N., Photo.

Roman figurine of nude female. Height 4.2 inches.
Found in association with cremation burial, p. 122.

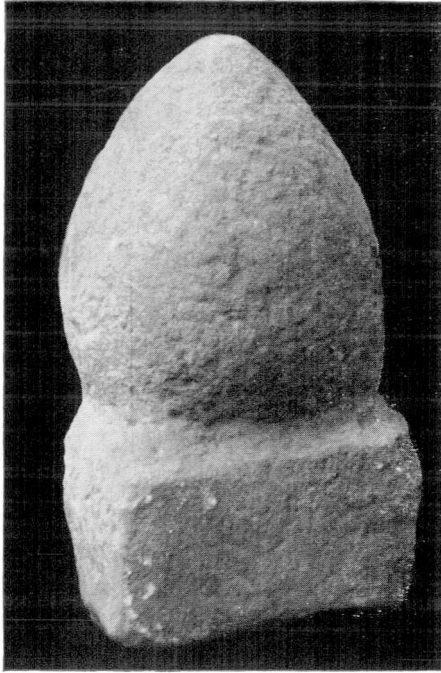


Fig. 1.



Fig. 2.

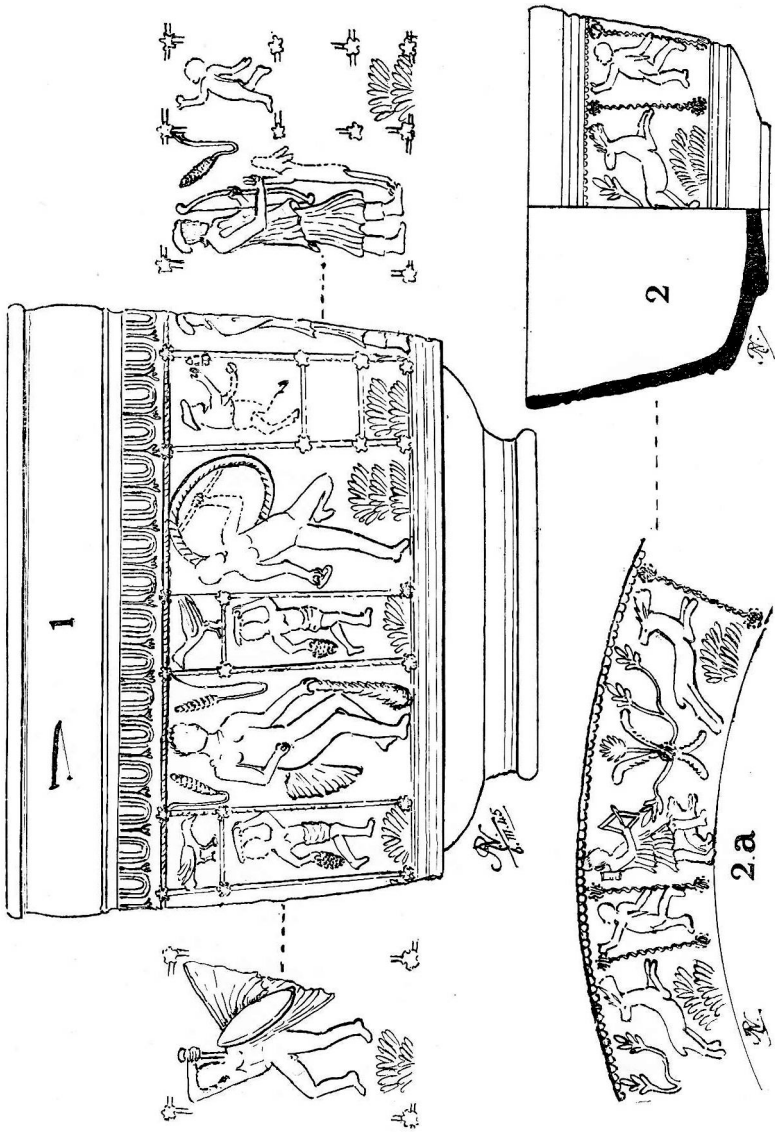
Fig. 3.

R. N., Photo.

Fig. 1. Roman Pine cone. Height $17\frac{1}{2}$ inches. p. 133.

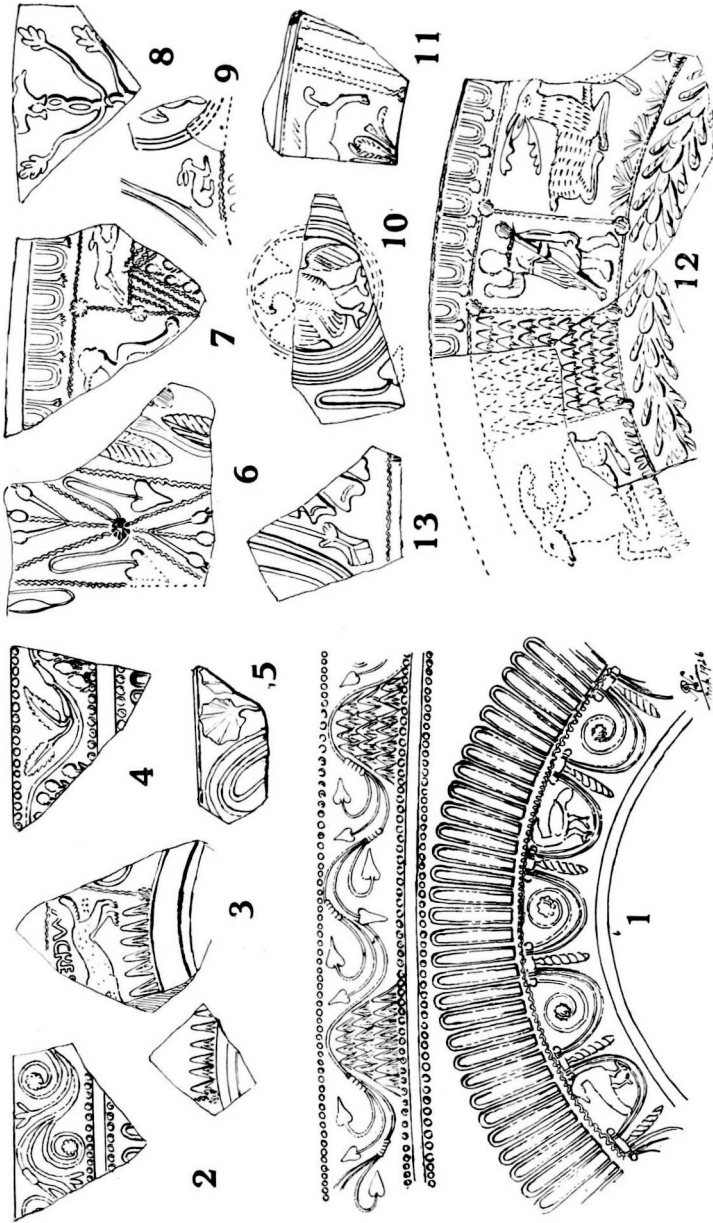
Fig. 2. Roman Cremation burial. p. 123.

Fig. 3. Roman Cooking pot. p. 124.

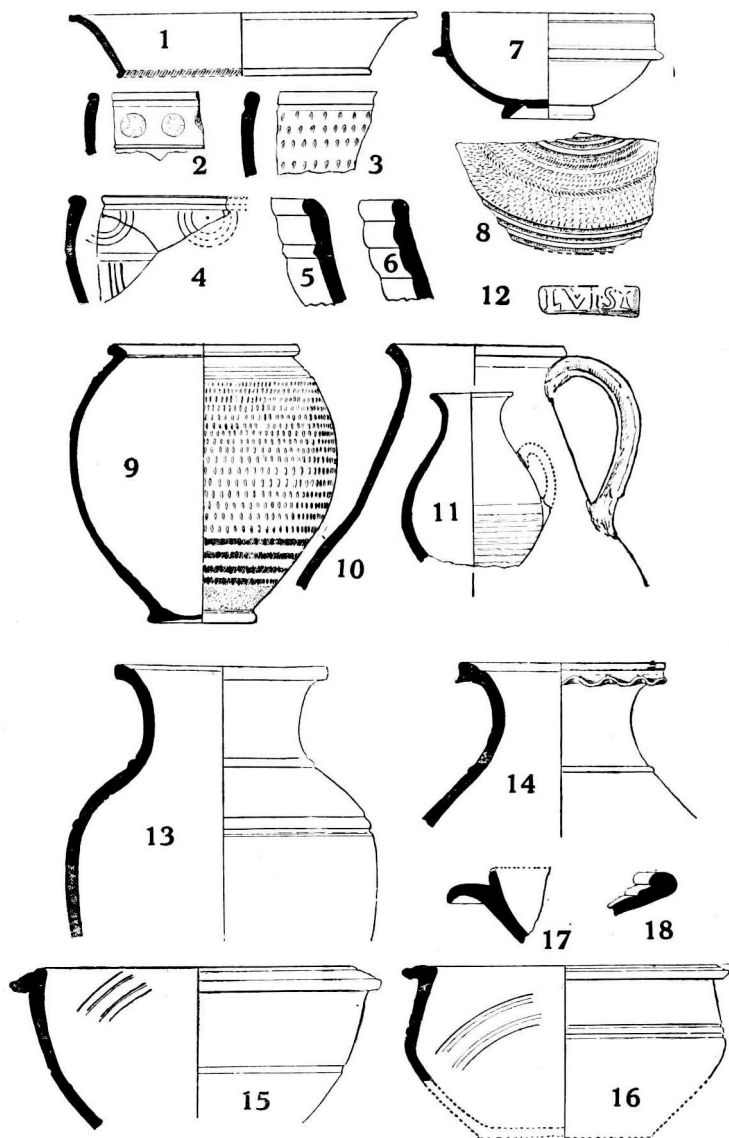


Roman Samian Ware.

No. 1. Bowl form 30, Foregate Street. Site of Mark's and Spencer's, p. 76.
No. 2, 2a. Cup form 78, with details projected, Foregate Street. Site of Littlewood's, p. 79.



Foregate Street. 1923-24.
Samian Ware from site of Hop Pole Hotel (now Stead & Simpson's) . p. 83.



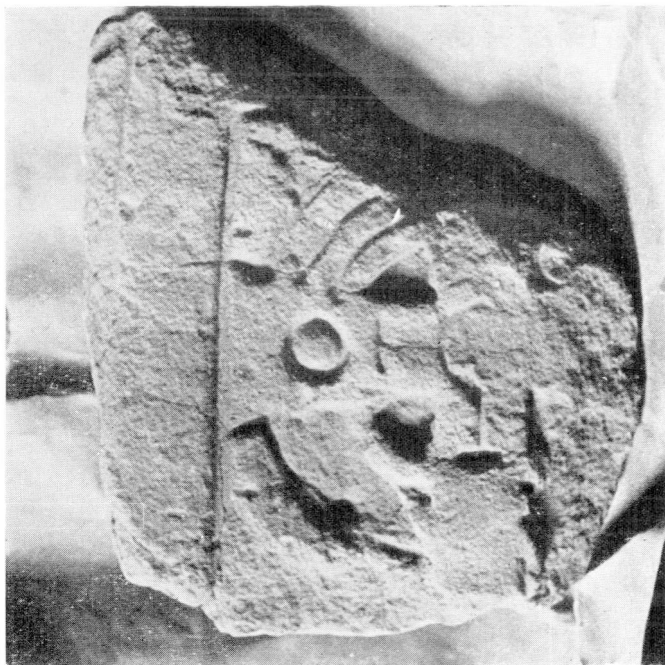
Watergate Street. Coarse Roman Pottery. pp. 113—118.



R. N., Photo.

Fig. 1.

Fig. 1. Portion of Saxon Cross, from core of City Walls, pp. 57 & 157.



T. D. Kendrick, Photo.

Fig. 2.

Fig. 2. Portion of Roman Amphitheatre, p. 157.



R. N., Photo.

13th Century "Parrot bill" Jug. p. 159.
Scale of inches,



R. N., Photo.

Roman: Draped figure from the core of the City Walls by the S.E. angle of the fortress. p. 58.
Scale of inches.

