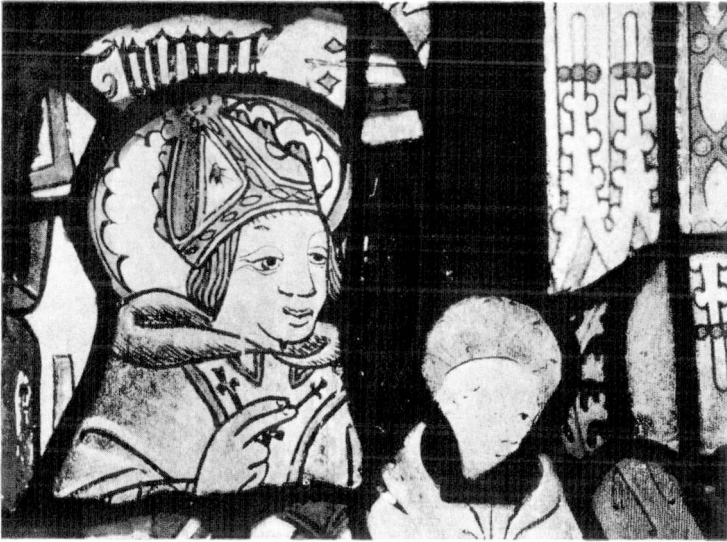


SHOTWICK. 14th century Quatrefoils. The Annunciation.



*(Drawn by M.H.R.)*

Fragment of a King saint, reported to have come from Chester Abbey.  
Grosvenor Museum. 15th century.



(Photo.—M.H.R.)

Fragments of late 15th to early 16th century glass at Higher Peover.

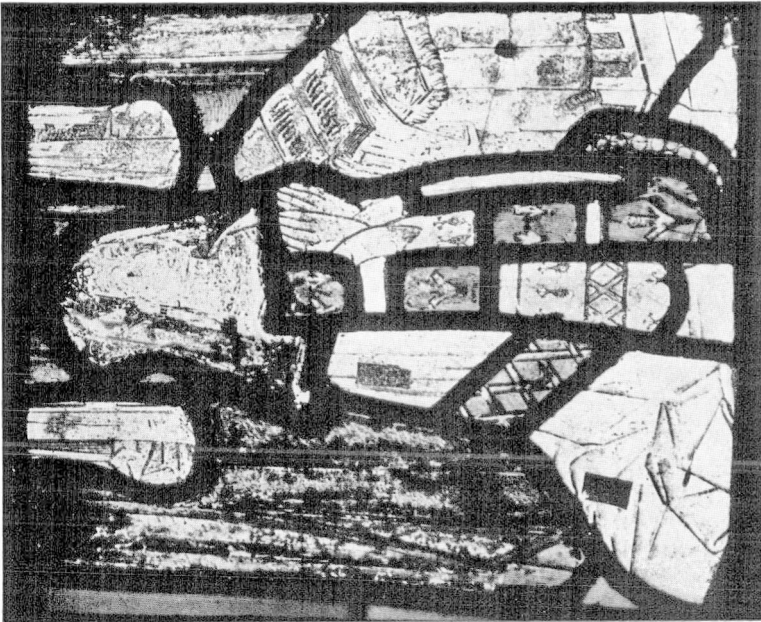
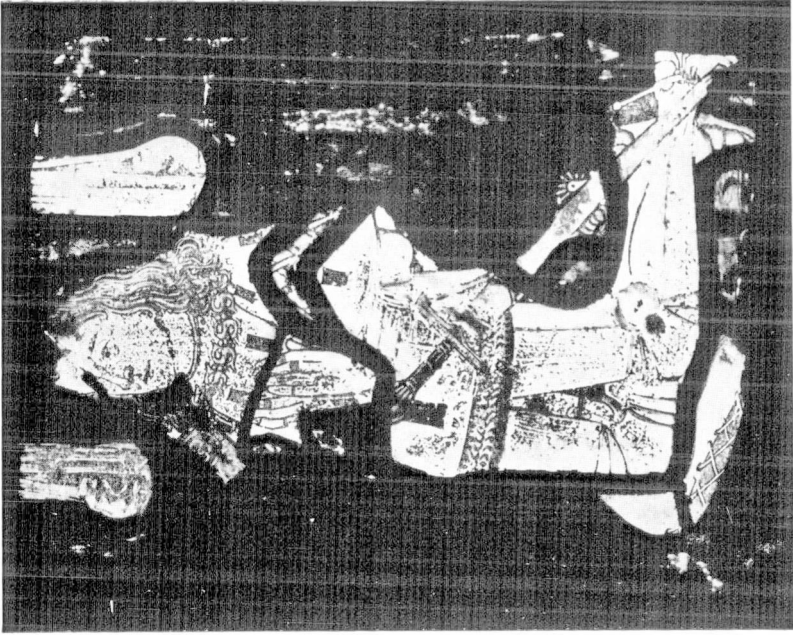
PLATE IV.



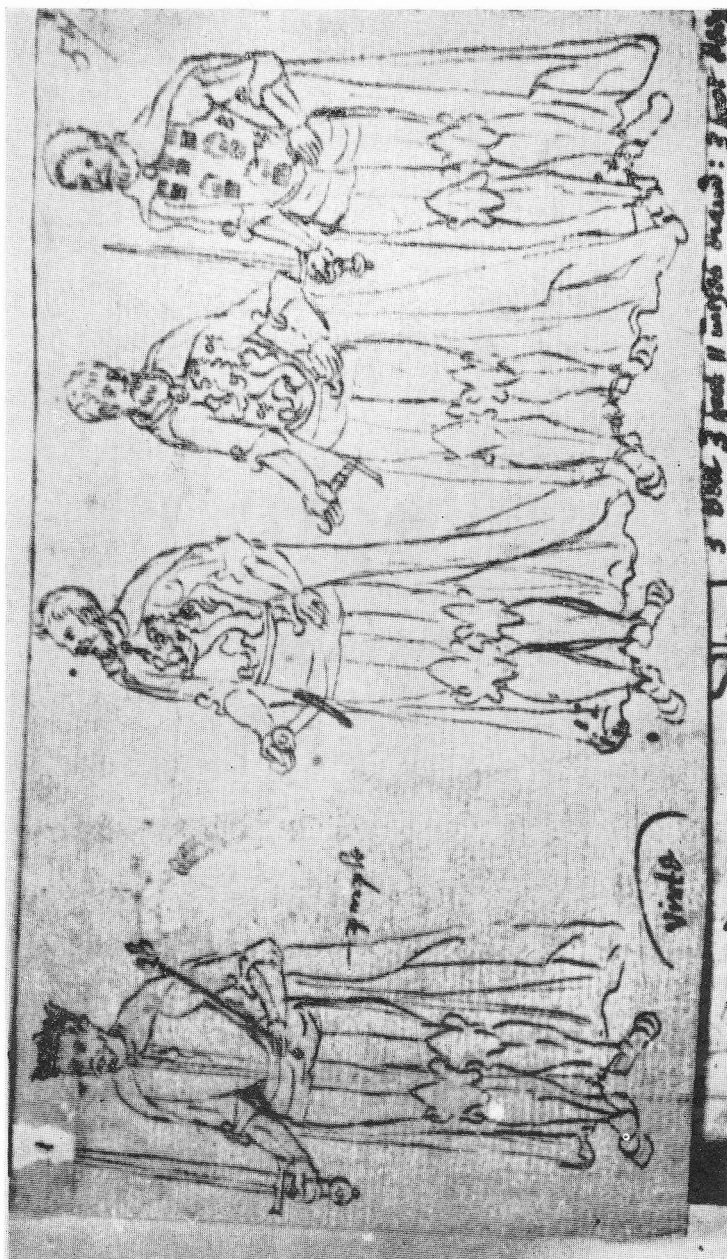
$\frac{1}{2}$

Late 15th to early 16th century head  
at Grappenhall.

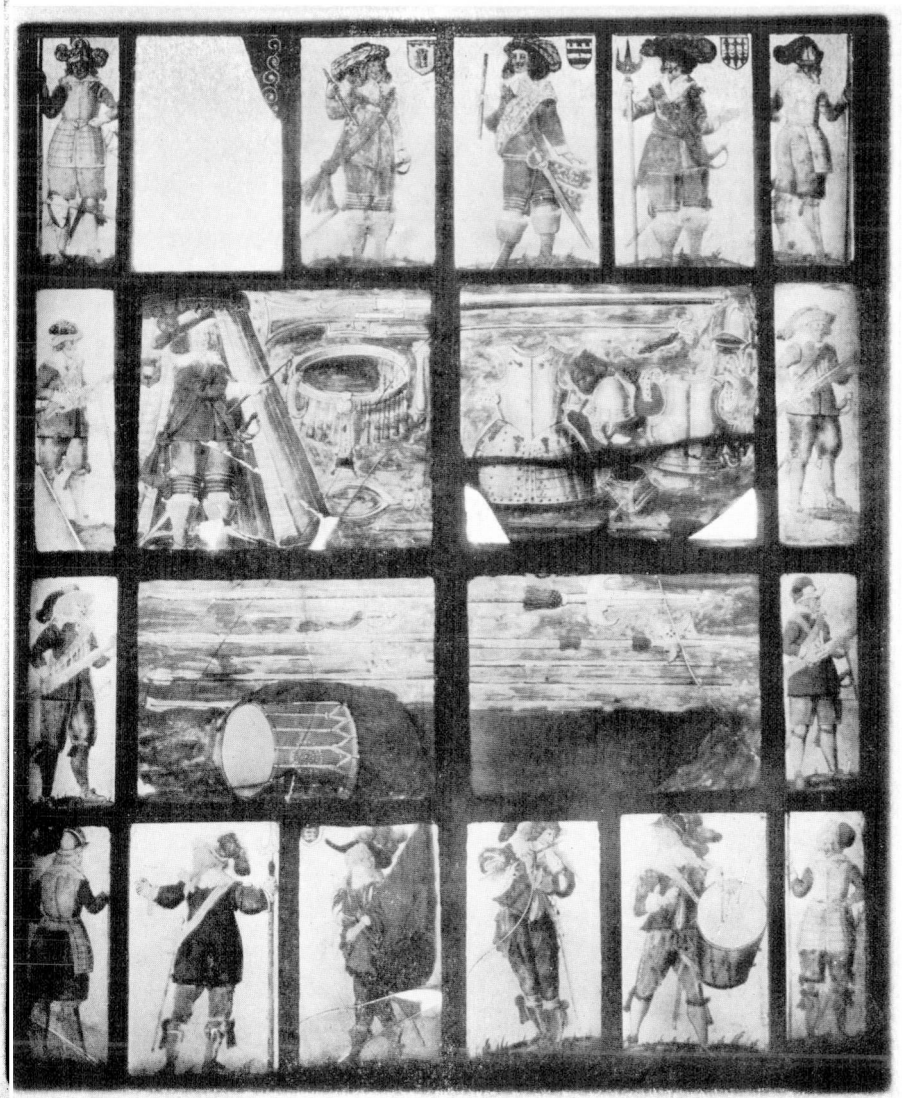
*(Photo, and Drawing—M.H.R.)*



(Photo.—M.H.R.)  
Late 15th century Donors (of the Delves family) now at Broughton, Staffs. Formerly at Wybunbury.



Earls of Chester as drawn in Harl. 2151 (B.M.) formerly in Chester Cathedral.



The Farndon Window.

