



**Plate 1: Unexcavated inter-cutting pits**



**Plate 2: Group of discrete pits, 1938, 1947, 1981, 1982, 2057 and 2104, post-excitation**



**Plate 3: Example of homogenous fills within oval pit 1185**



**Plate 4: *In situ* storage pots within pit 1821**



**Plate 5: Northern part of site including 14th -15th century buildings and cess pits**



**Plate 6: Southern part of site, including quarry pit 1922**



**Plate 7: Continuity of medieval and 19th century plot boundaries**



**Plate 8: Deposit stained, stone built cess pit E (2338)**



**Plate 9: Small, sub-rectangular structure 2328.**



**Plate 10: Early 20th century Ribbon Dye Works,  
floor surface 1080.**



**Plate 11: Salvage Recording area**



**Plate 12: Reconstructed pottery vessels**



**Medieval (14th-15th? Century) jet crucifix (2176)**

**c.1525-1550 Detail of portrait bust around neck of Rhenish stoneware vessel (2338)**

**Late 17th century clay pipe assemblage (2339)**

**14th-15th century lobed key (2141)**

**Plate 13: Examples of artefactual evidence.**



**Plate 14: Context 1728 - Large plano-convex hearth bottom. Scale : cm.**



**Plate 15 - Context 1987 - Piece of possible tap slag. Scale : cm.**

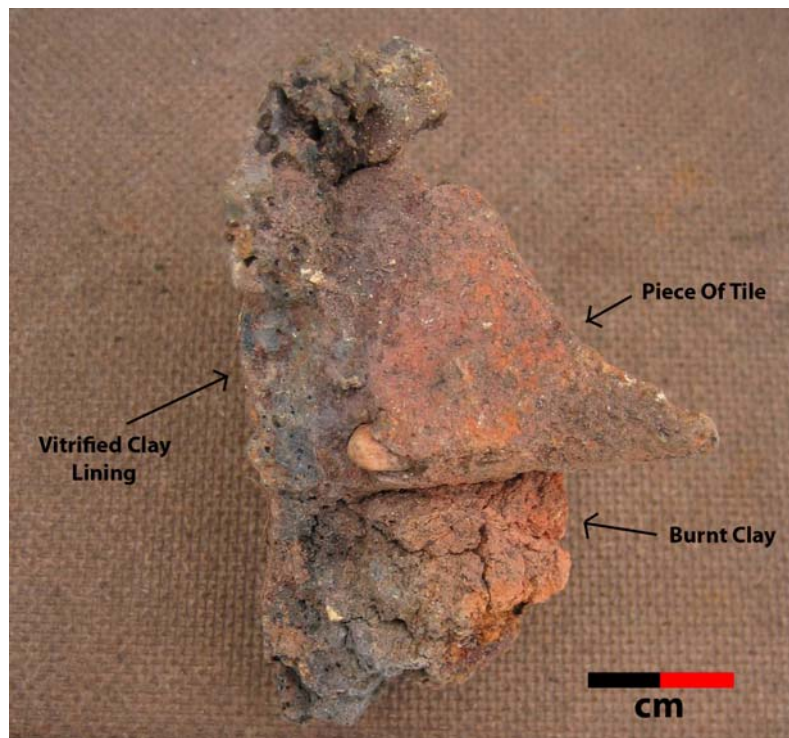


**Plate16 - Context 1779 - Flake and spheroidal  
hammerscale. Scale : mm.**





**Plate 17 - Context 1728 - Amorphous, undiagnostic slag. Scale : cm.**



**Plate 18 - Context 1640 - Tile with adhered burnt and vitrified clay. Scale : cm.**



**Plate 19 - Context 1562 - Blue / green non-ferrous working slag / corroded object. Scale : cm.**



**Plate 20 - Context 2200 - Hearth bottom with significant yellow residue. Scale : cm.**



**Plate 21 - Context 2200 - Close-up of yellow residue "pustules". Scale : mm.**