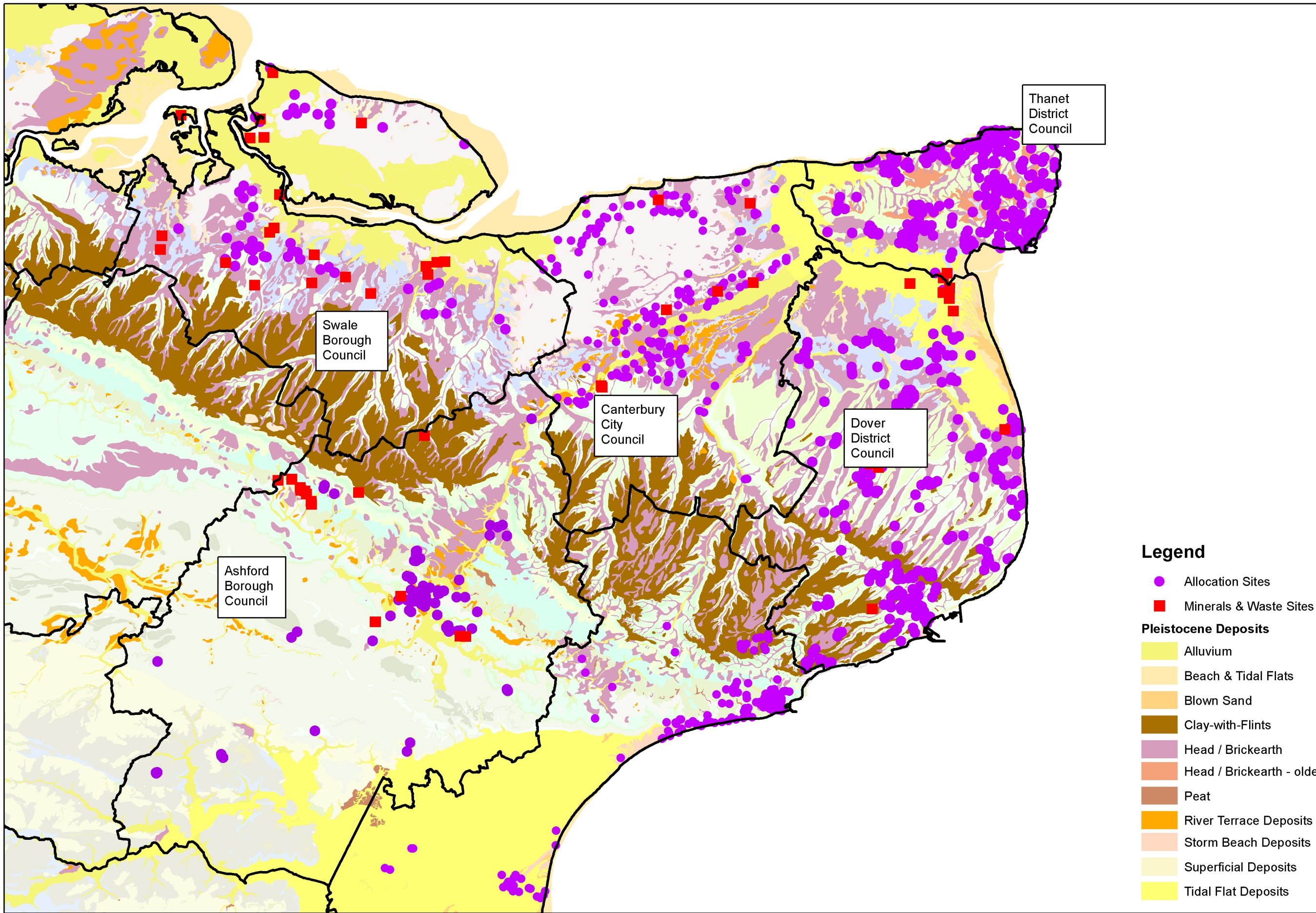


Stour Basin Palaeolithic Project - study area, geology and site allocations

Scale:
1:226,767

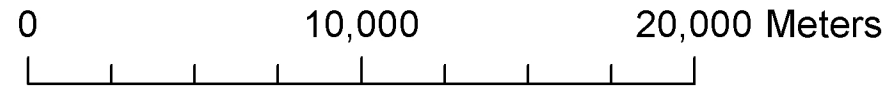


Legend

- Allocation Sites
- Minerals & Waste Sites

Pleistocene Deposits

- Alluvium
- Beach & Tidal Flats
- Blown Sand
- Clay-with-Flints
- Head / Brickearth
- Head / Brickearth - older
- Peat
- River Terrace Deposits
- Storm Beach Deposits
- Superficial Deposits
- Tidal Flat Deposits



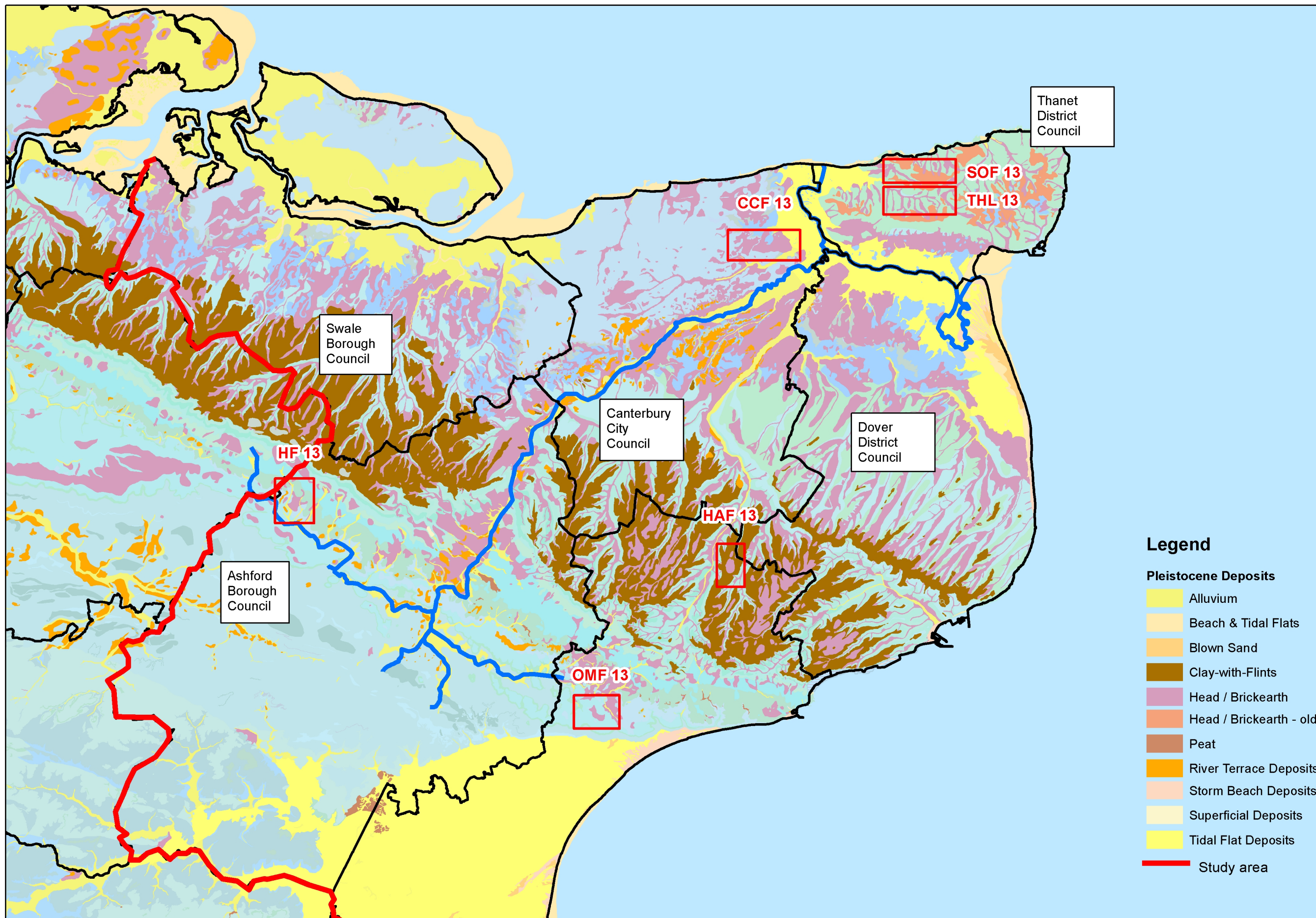
Produced by the KCC Heritage Conservation Group

This map is based upon Ordnance Survey material with the permission of Ordnance Survey on behalf of the Controller of Her Majesty's Stationery Office (C) Crown Copyright. Unauthorised reproduction infringes Crown Copyright and may lead to prosecution or civil proceedings. 100019238. 2007



Stour Basin Palaeolithic Project - Quarternary deposits and fieldwork sites

Scale:
1:226,767



Produced by the KCC Heritage Conservation Group

This map is based upon Ordnance Survey material with the permission of Ordnance Survey on behalf of the Controller of Her Majesty's Stationery Office (C) Crown Copyright. Unauthorised reproduction infringes Crown Copyright and may lead to prosecution or civil proceedings. 100019238. 2007



Stour Project, CCF 14 - geophysics transects

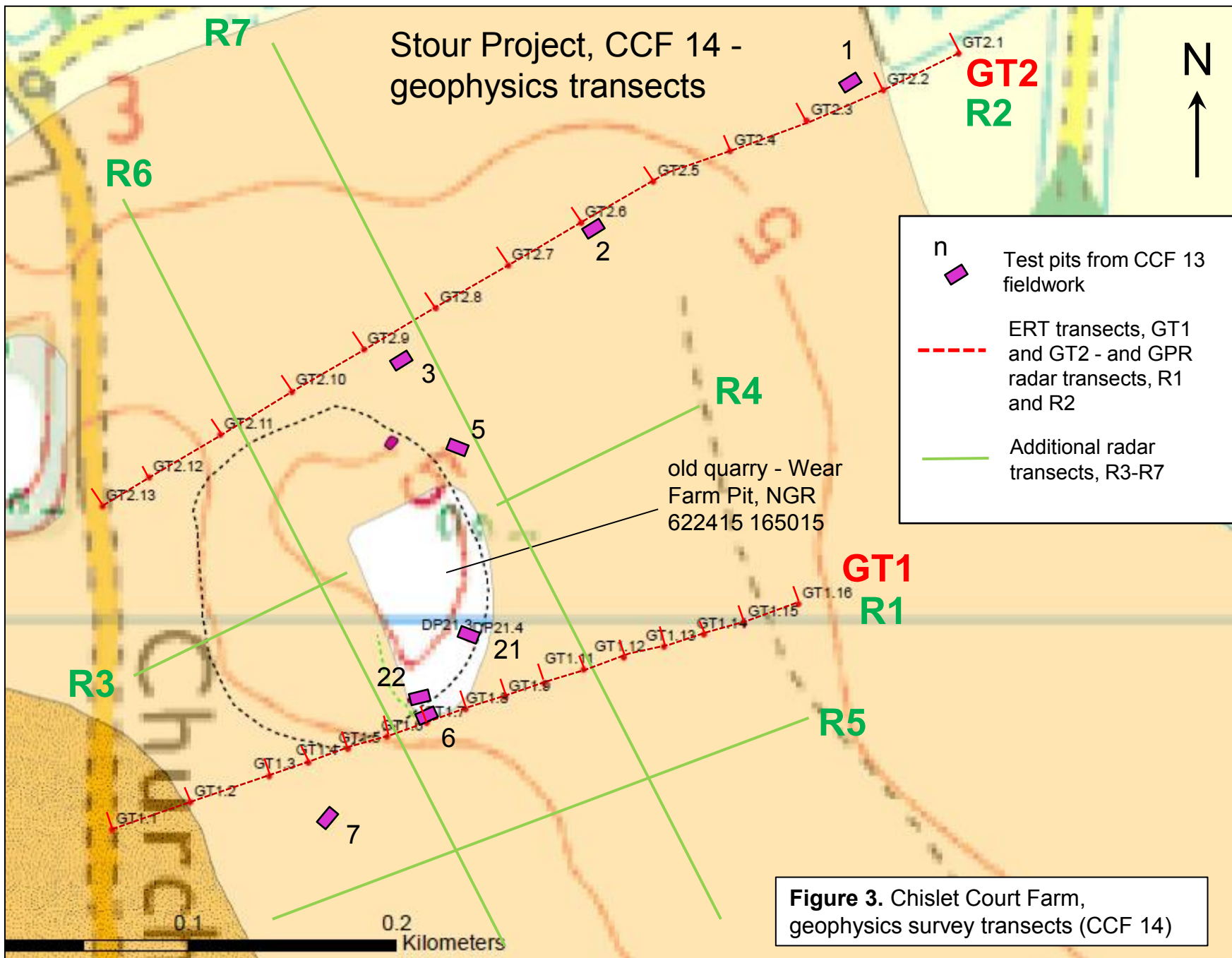


Figure 3. Chislet Court Farm, geophysics survey transects (CCF 14)

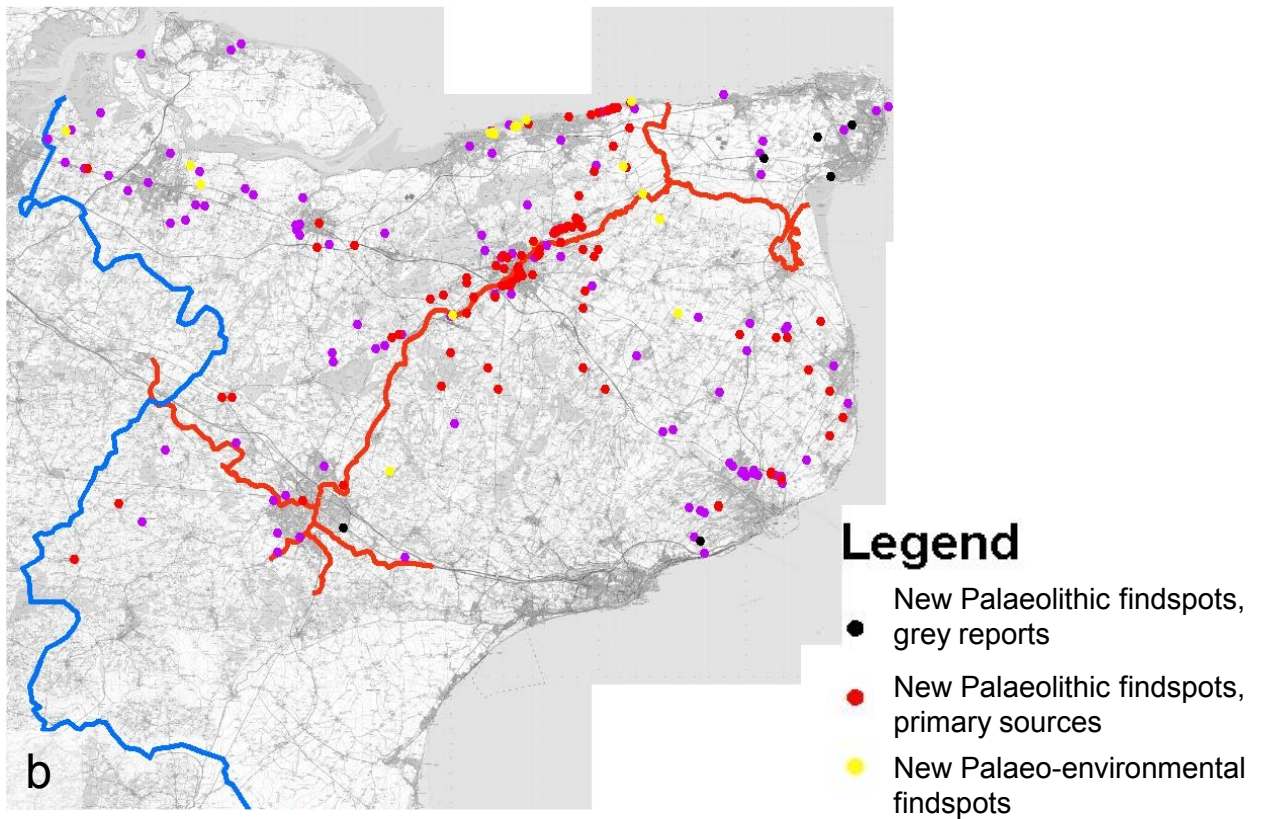
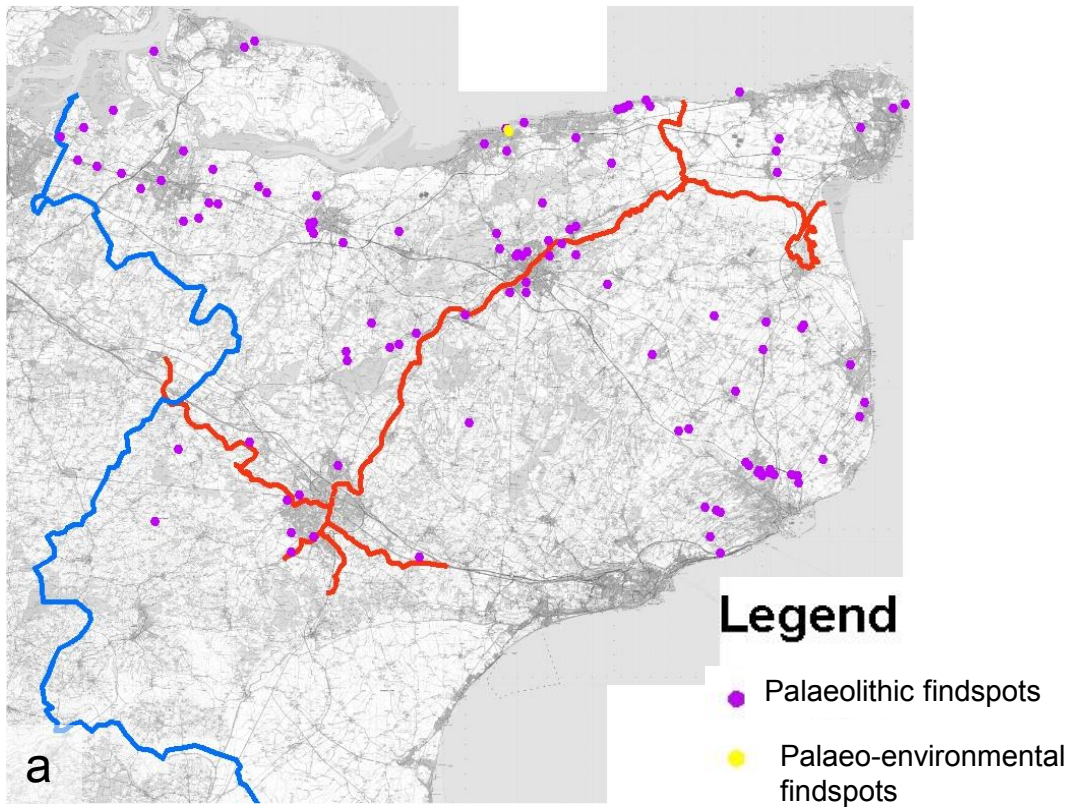


Figure 4. Stour basin, Palaeolithic records in the HER: (a) 120 records at start of project; (b) 234 records after HER enhancement for the project

AAR chart ref#	No. of opercula processed	Test pit	Sample <>	Context	NEaar lab ref	ChiB ref
Chislet 5	3	TP 5	<21>	512	9862 - 9864	ChiBto5-7
Chislet 6	3	TP 6	<37>	607	9865 - 9867	ChiBto8-10
Chislet 22	3	TP 22	<106>	2204-b	9868 - 9870	ChiBto11-1
CCF	3	TP 21	<245>	2119	9910 - 9912	ChiBto14-16

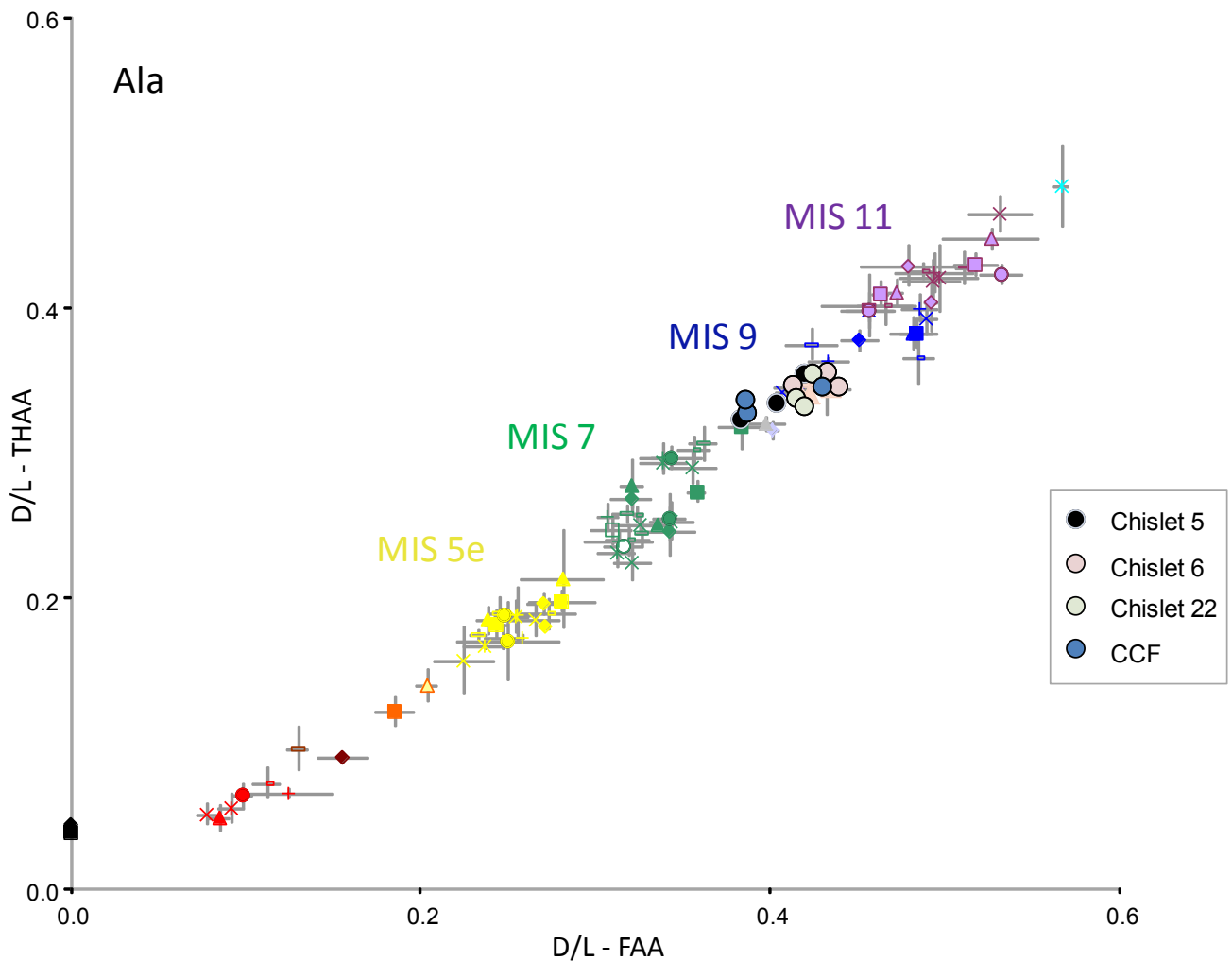
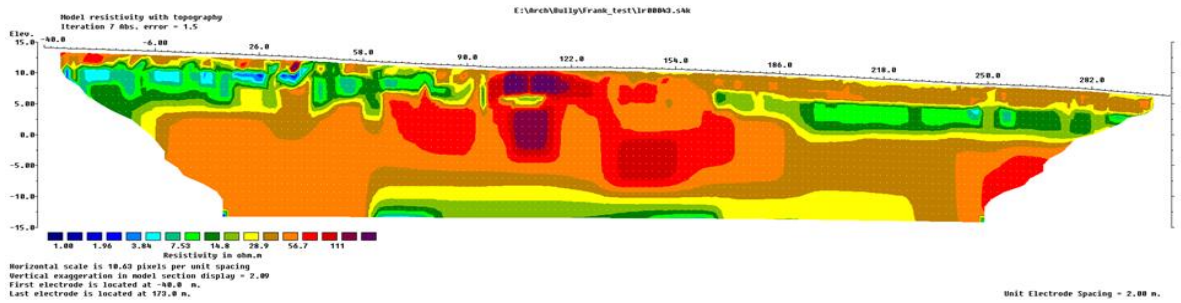
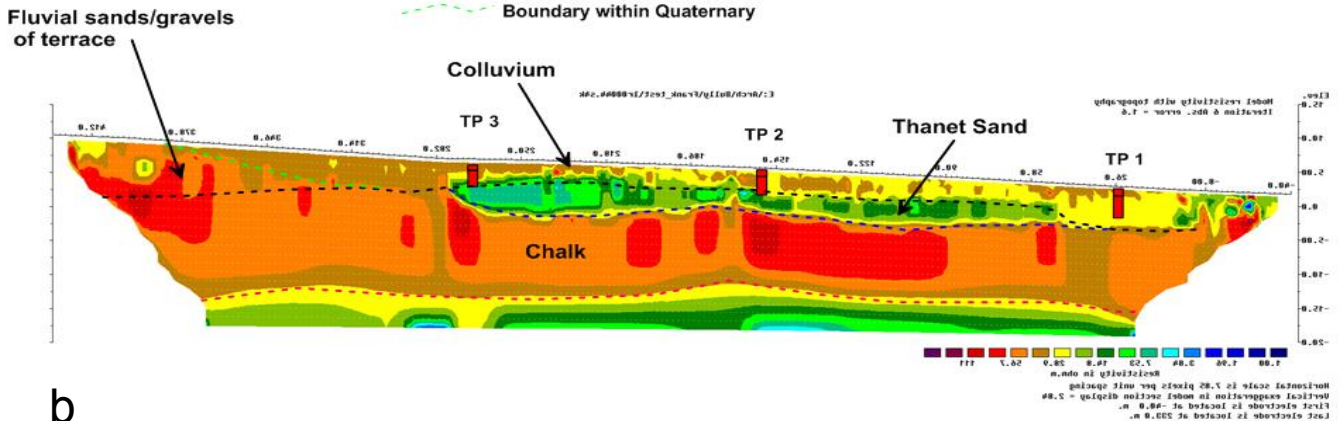
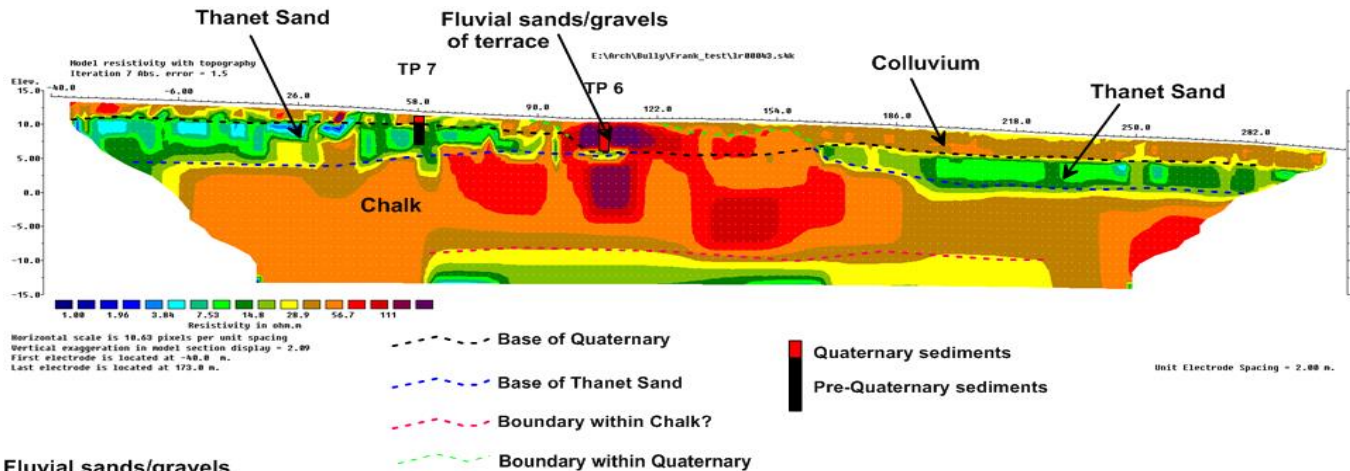
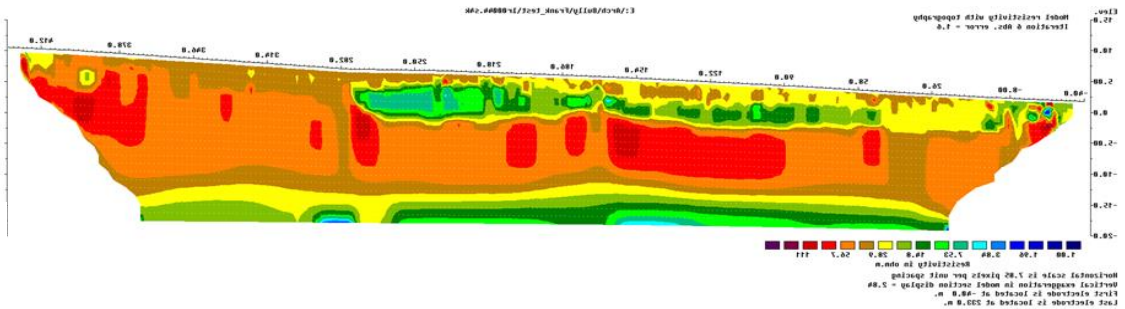


Figure 5. D/L racemisation of hydrolysed amino acid (THAA) vs free amino acid (FAA) for Alanine in *Bithynia tentaculata* opercula from Chislet . [compared to data obtained from opercula from UK sites correlated with MIS 5e, MIS 7, MIS 9 and MIS 11]



a



b

Figure 6. Chislet Court Farm, geo-physics ERT survey results: (a) raw results, resistivity profile versus depth; (b) interpreted results, ground-truthed against test pits along transect 1.

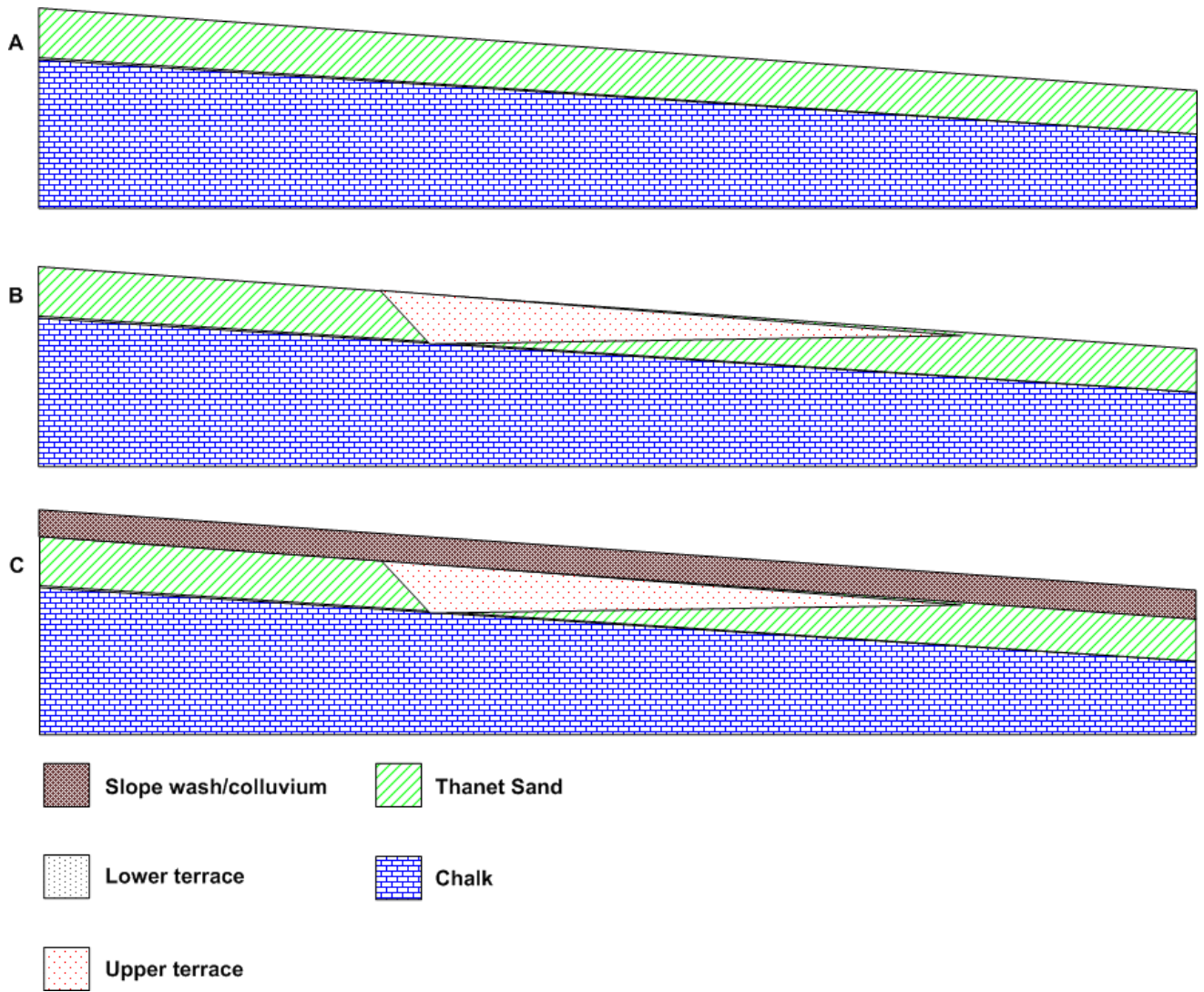


Figure 7. Chislet Court Farm, Transect 1: deposit formation interpretation model 1.

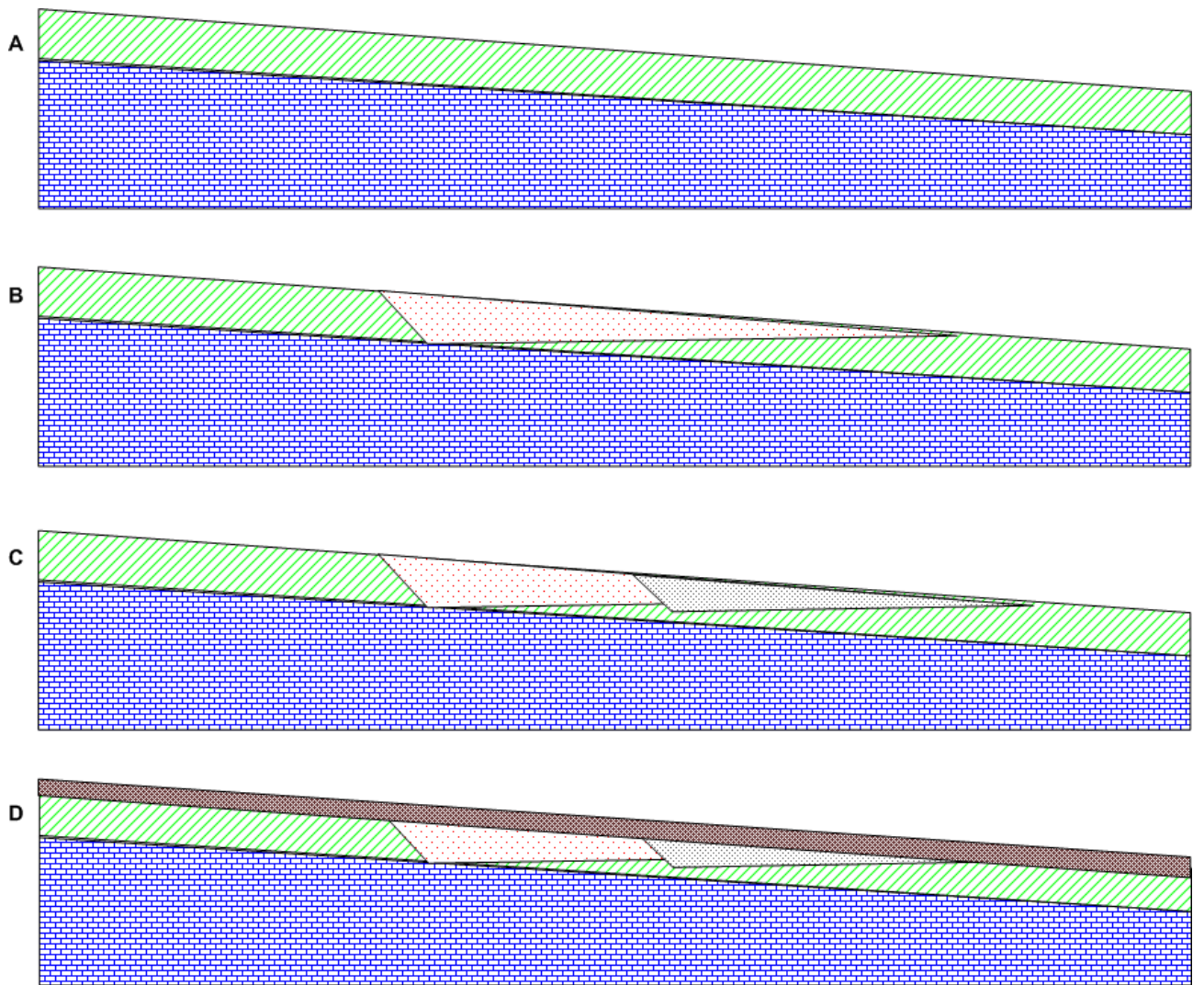


Figure 8. Chislet Court Farm, Transect 1: deposit formation interpretation model 2.



Figure 9. Outlines of Chislet Court Farm (site code CCF 13) test pits 6, 7, 8 and 22 overlain against Google Earth aerial photo showing crop marks.

Stour Basin Palaeolithic Character Areas - north-west

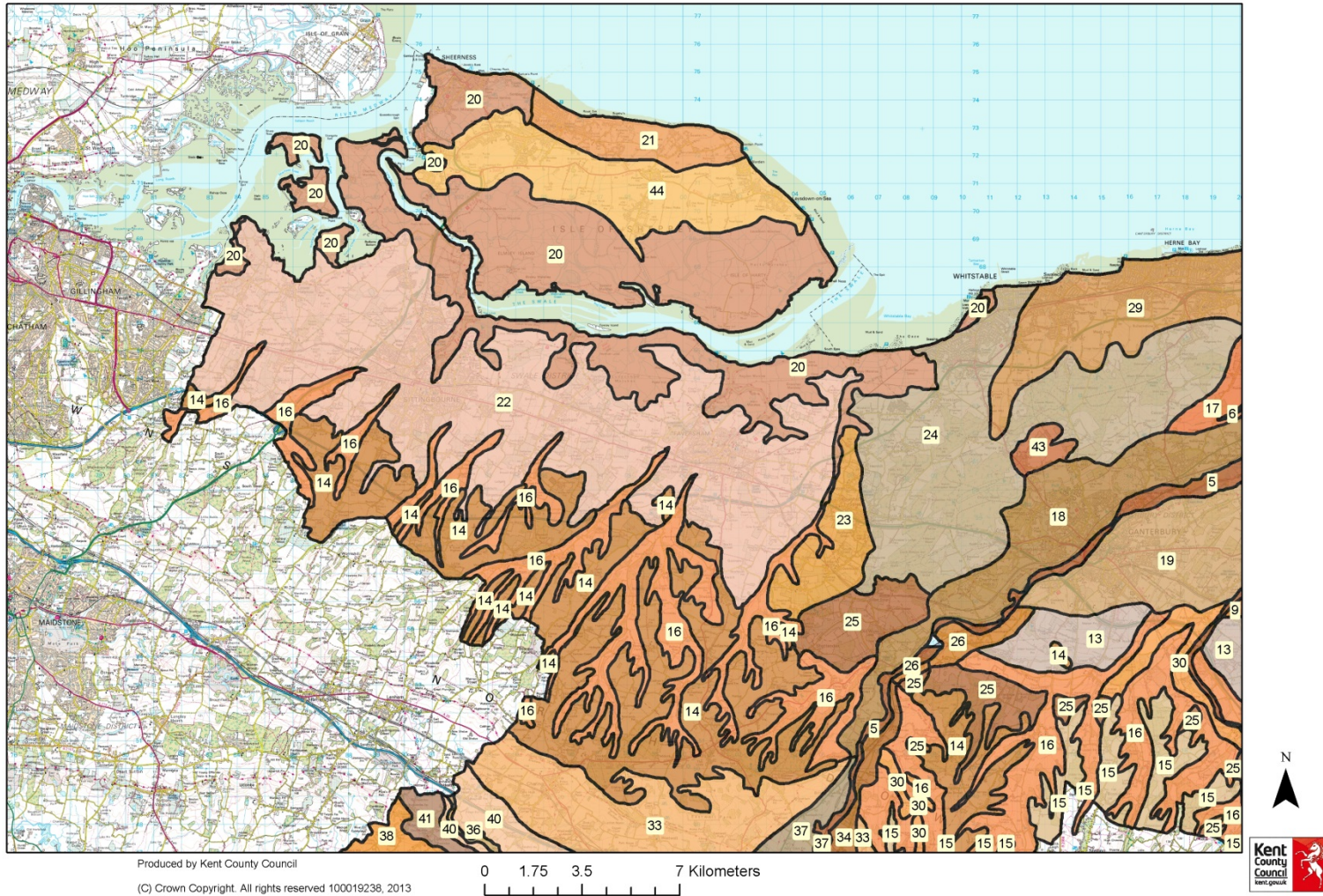
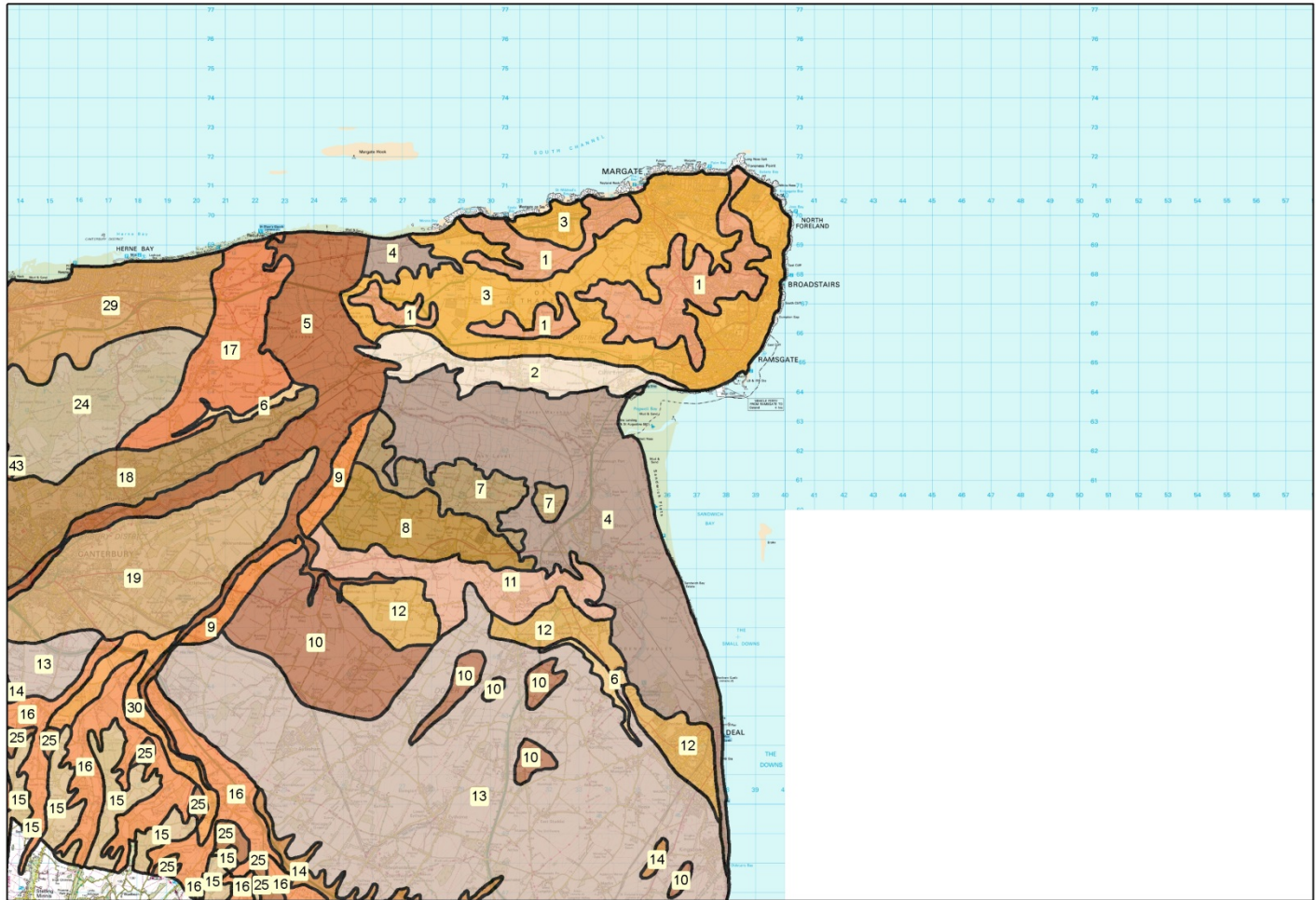


Figure 10a. Map of Palaeolithic Character Areas (north-west)

Stour Basin Palaeolithic Character Areas - north-east



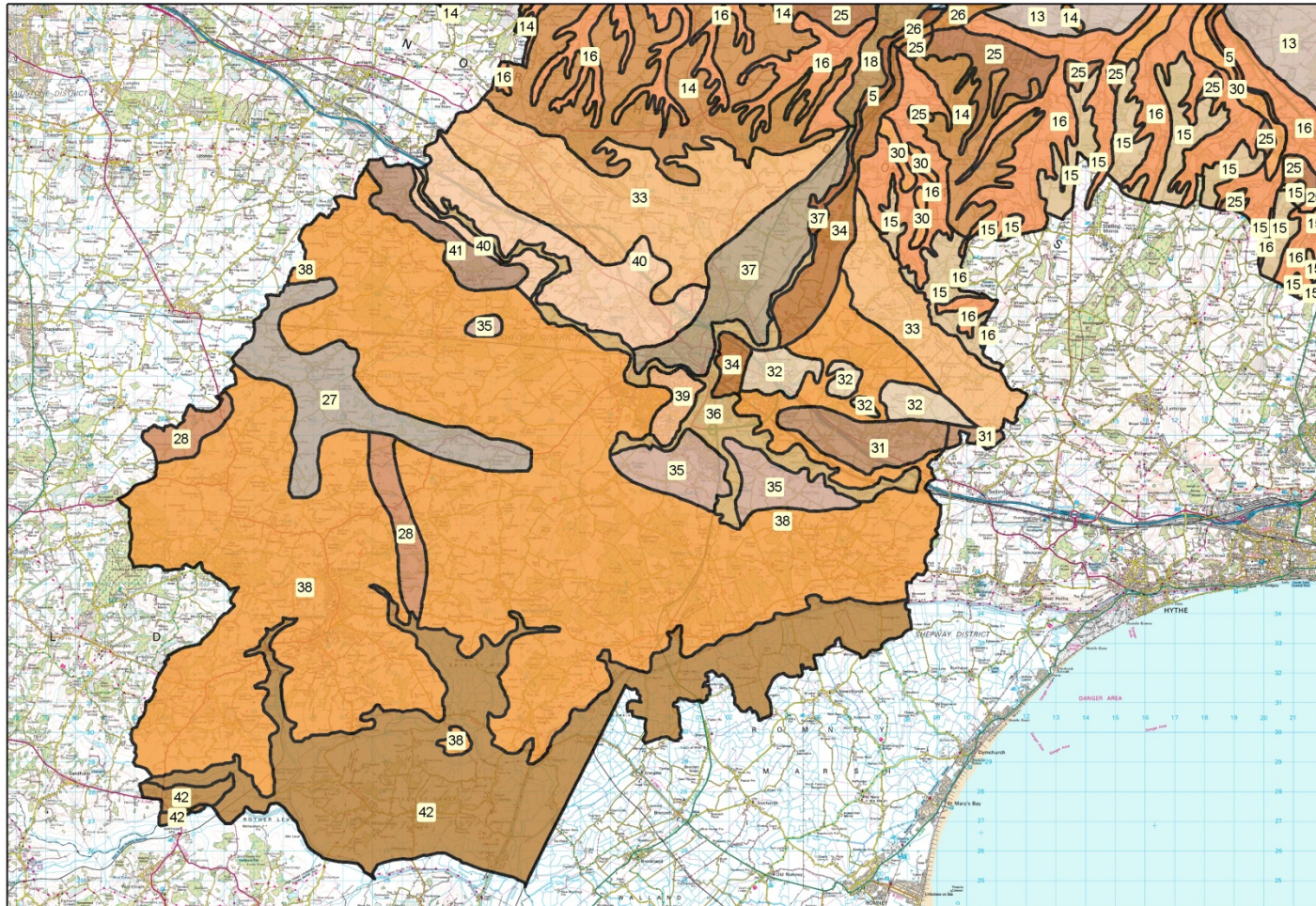
Produced by Kent County Council
(C) Crown Copyright. All rights reserved 100019238, 2013

0 1.75 3.5 7 Kilometers



Figure 10b. Map of Palaeolithic Character Areas (north-east)

Stour Basin Palaeolithic Character Areas - south-west



Produced by Kent County Council

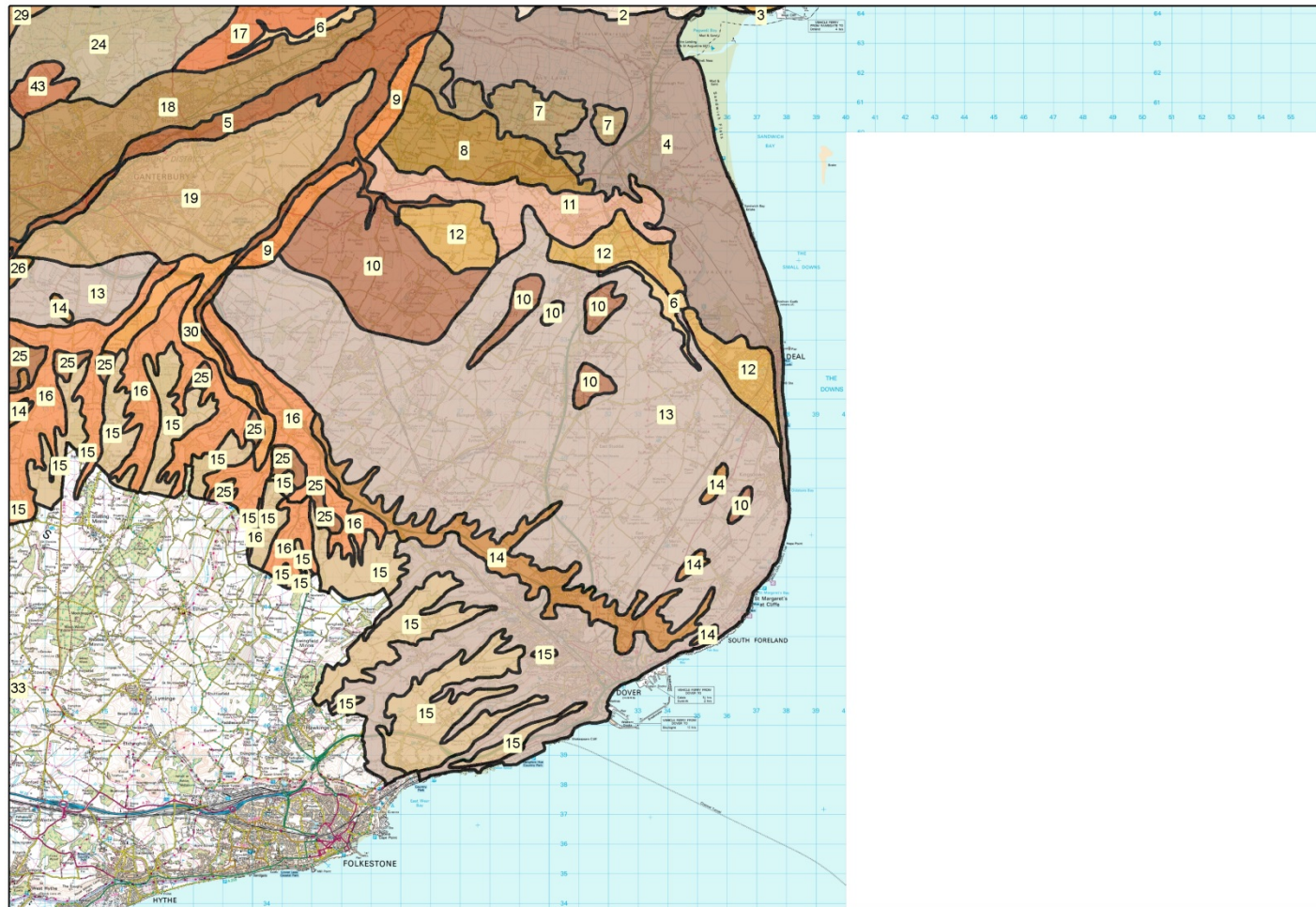
(C) Crown Copyright. All rights reserved 100019238, 2013

0 1.75 3.5 7 Kilometers



Figure 10c. Map of Palaeolithic Character Areas (south-west)

Stour Basin Palaeolithic Character Areas - south-east



Produced by Kent County Council
(C) Crown Copyright. All rights reserved 100019238, 2013

0 1.75 3.5 7 Kilometers



Figure 10d. Map of Palaeolithic Character Areas (south-east)