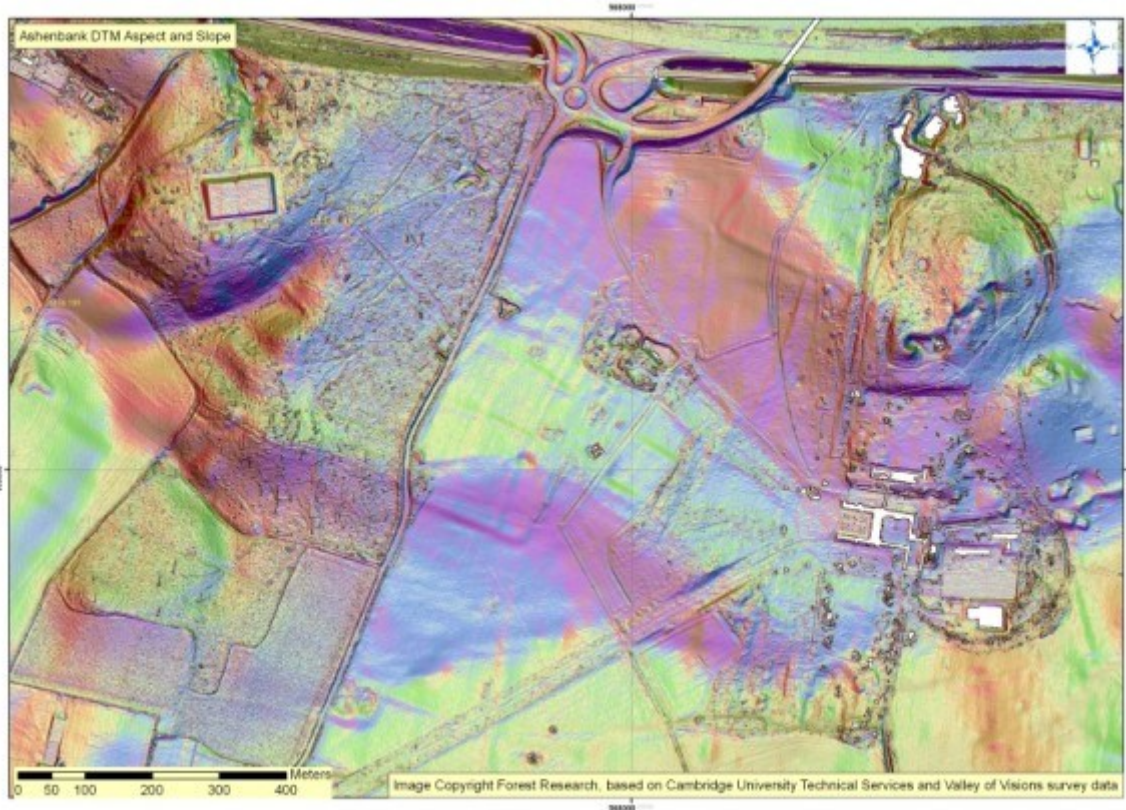


LIDAR SURVEY OF THE MEDWAY VALLEY

June 29, 2012 Andrew Mayfield Community Archaeology, Day of Archaeology 2012, Education, Periods, Survey Archaeology, Cobham, Cobham Hall, Community Archaeologist, Gravesham, Kent, Kent County Council, LiDAR, medieval field systems, Medway, Medway Valley, Plantlife, Shorne, Valley of Visions Landscape Project



In 2011, the Valley of Visions Landscape Partnership Project in conjunction with Lottery funding from the Shorne Woods Archaeology Project, commissioned a high-res LiDAR survey of the Medway Valley in Kent.

LiDAR stands for Light Detection and Ranging and is a process where an aerial laser survey produces a highly accurate topographic map of the target area.

The results have been spectacular and are now being used to better understand the archaeology of the Valley.

In 2012, as Kent County Council's Community Archaeologist, I have been working with local people and groups to investigate some of the LiDAR results.

This work is ongoing and will continue into 2013. The results have been particularly impressive around Shorne Woods Country Park, Cobham Hall and the Ranscombe Reserve, run by Plantlife.

Findings range from medieval field systems and trackways to world war two military camps, all lost in the woods!

See www.facebook.com/archaeologyinkent for further images and information
and <http://www.bbc.co.uk/news/uk-england-sussex-18448005>
Do get in touch for more information!