

DAY OF ARCHAEOLOGY 2013 – LAARC LOTTERY! PART 1 (GENERAL FINDS)

[July 26, 2013 Adam Corsini Day of Archaeology 2013, Finds, Museum Archaeology Brockley, Brockley Hill, LAARC Lottery, Nonsuch Palace, pottery, Roman Flagon](#)

What a start to LAARC Lottery! Big thanks to all of those that have been suggesting shelf numbers. Here's the results:

First up we've a classic object type probably found on every archaeological site. Thanks to @omatopopi for suggesting shelf 3553 which had a box of clay tobacco pipe from 1988's excavations at [Wardrobe Court](#)



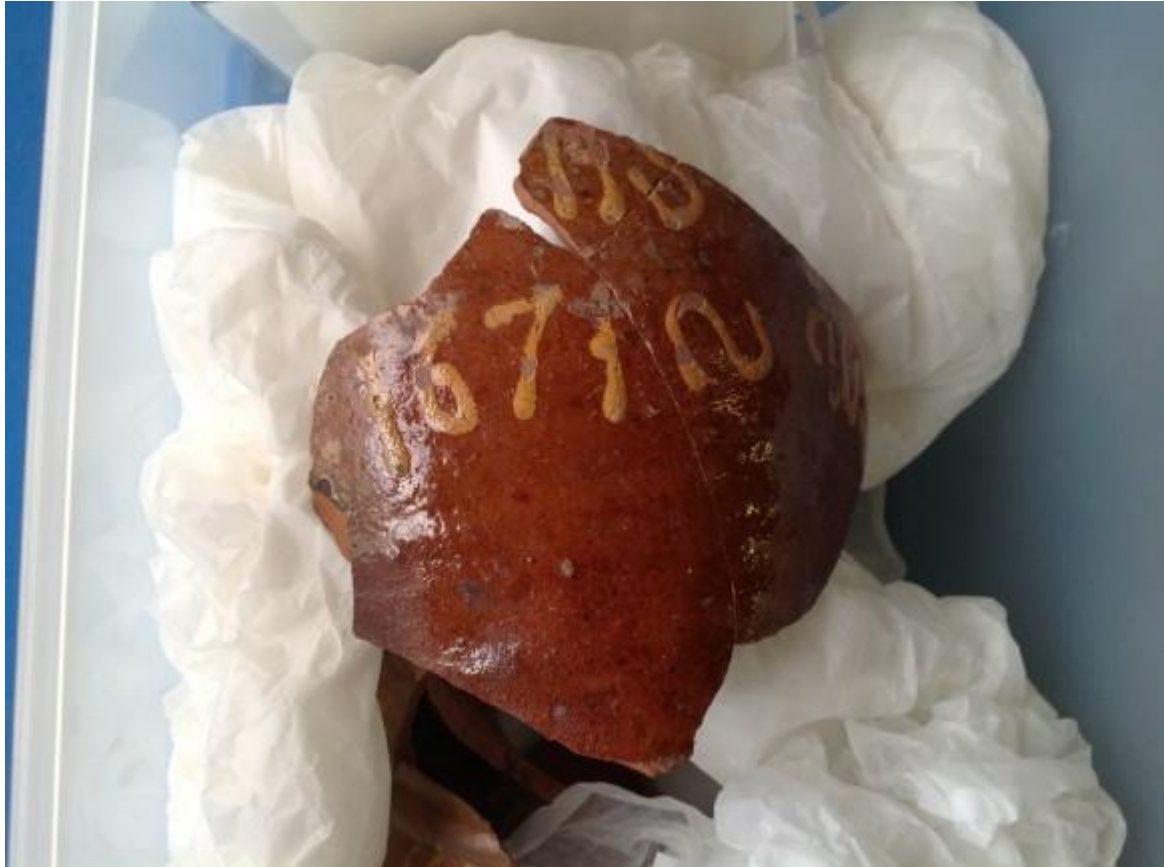
Then we had a look at one of the lowest shelf numbers in the archive, shelf 8, as suggested by @WulfgarTheBard. Here we found a box of Roman Flagon from 1972 excavations at Brockley Hill



This was particularly lovely and suggested by @alitorlo and found on shelf 2014. A pipkin from [Foster Lane, dug in 1982](#)



The next one's really cool as I can pin point it to an exact date. Thanks to @IndianaHannah for suggesting shelf 102 which had this piece of Metropolitan Slipware from [Nonsuch Palace](#) with '1671' glazed on it



The Empress of #DayOfArchaeology herself, the lovely @lornarichardson, predicted that her shelf 5478 would have some CBM. She was right of course but hey, we still found this decorated brick pretty sexy. Comes from the PCA site at [Kings Road](#)



A couple more for this round. One of LAARC's recent volunteers @TinctureOfMuse has our favourite discovery. Low numbers produce old sites = things that need a bit better packaging. Here's what we discovered on shelf 12 (another Brockley Hill excavation)



This was inside though!



Here's how we discovered it: [Opening the boxes](#)

Finally in this round, Thanks to @TheHeronEC2 for suggesting shelf 26 which produced a couple more bits of Roman samian pottery, excavated at [Noble Street way back in 1949](#). These two bits however should really fall into part two, our registered finds. So thanks @TheHeronEC2, you're contribution has helped us discover objects that should be in another part of the archive! And these objects have a pottery maker's stamp on (left) and a bit of etched roman graffiti 'Bii' (right)



Next up it's our Registered finds: objects assigned an individual number (akin to an museum accession number) because they are of particular interest. The stamp and graffiti are examples as well as something obvious like a coin. Tweet using **#dayofarch** **#LAARCLottery** or **#LAARC**, or message us below, picking a number between 1 and 815 to discover, completely at random, what that shelf holds... – and we'll post back our results at 1pm