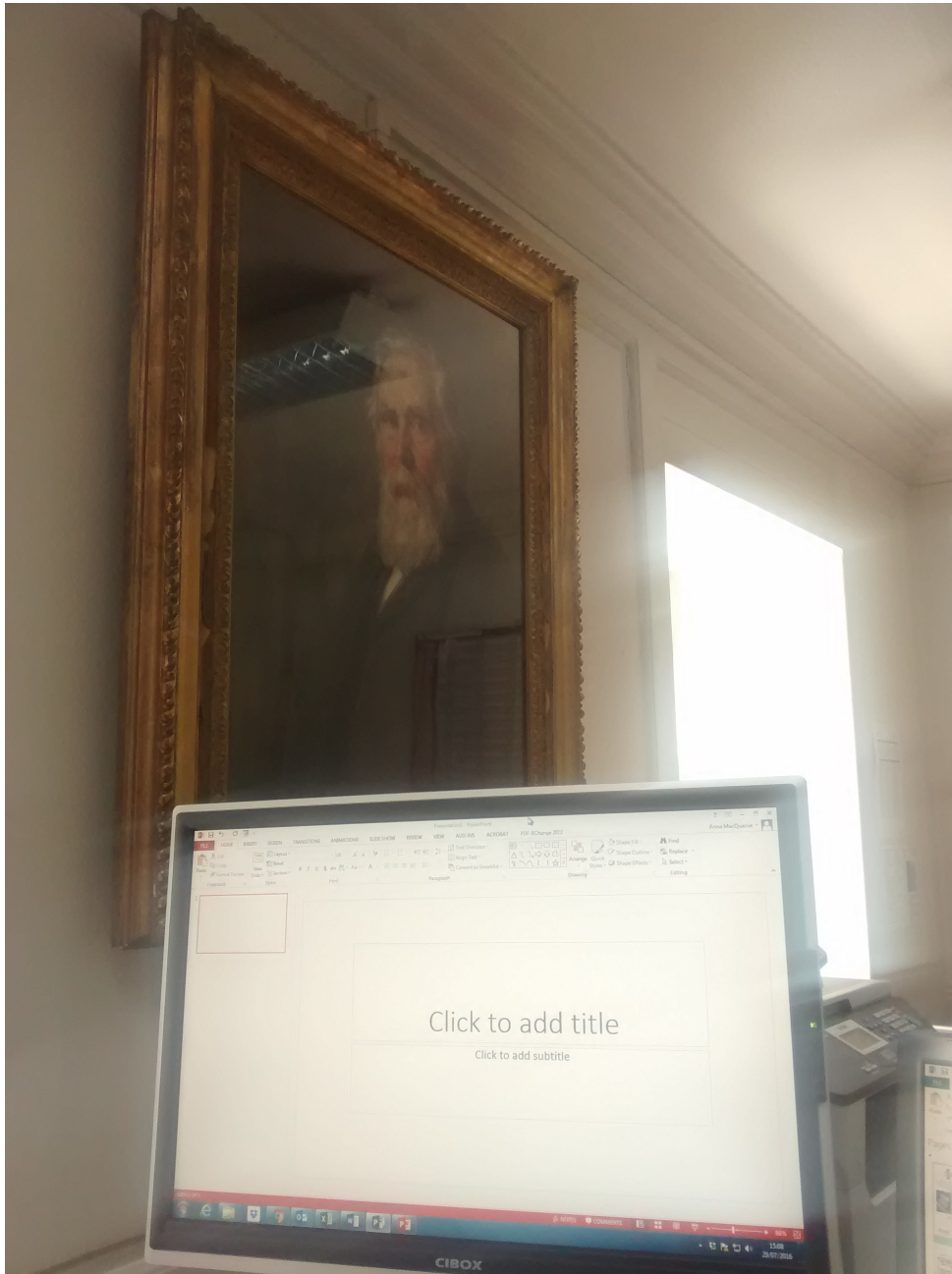


# DISPATCHES FROM EDINBURGH: SCARF PROJECT & MUSEUMS – PART 2

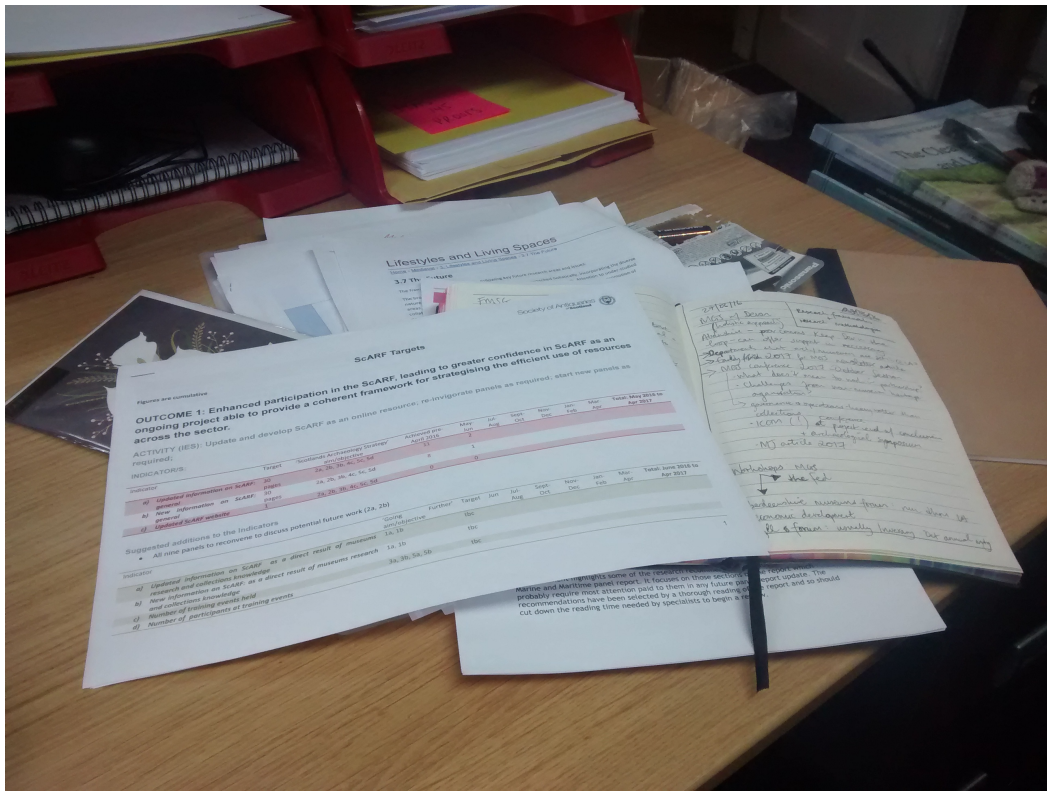
July 29, 2016 Anna MacQuarrie Day of Archaeology 2016, Explore Posts, Public Archaeology,UK Aberdeenshire, Orkney, ScARF, Scotland



*A blank powerpoint presentation being presided over by Joseph Anderson  
FSA Scot (1916–1832)*

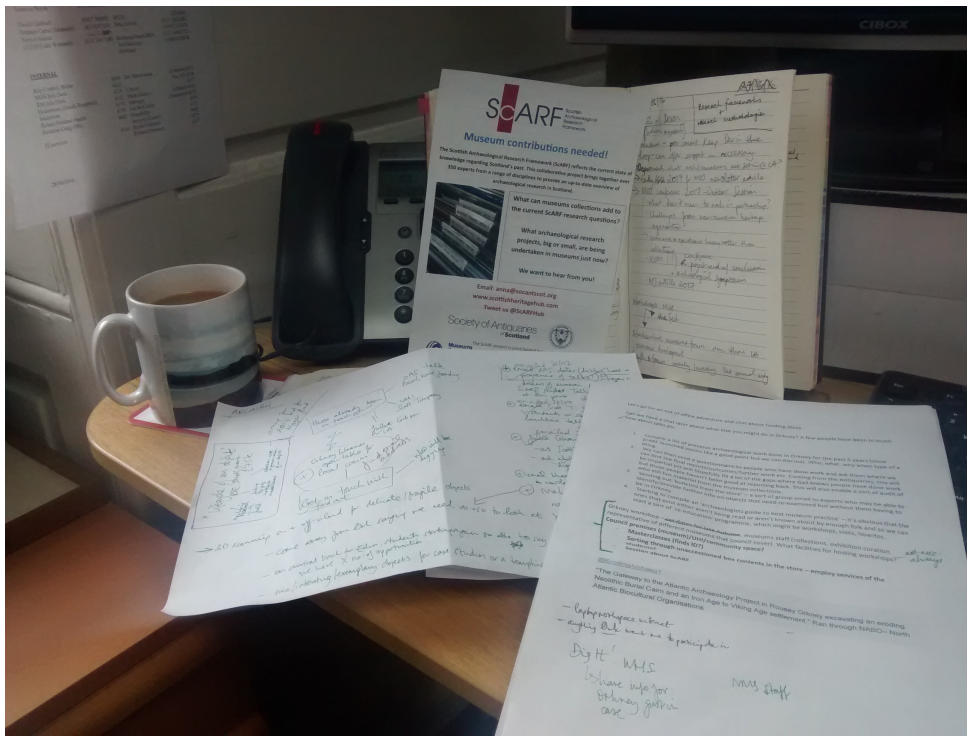
Lunches had, cups of tea refreshed twice over (the only thing this office loves more than archaeology is tea – fact) I spend the first part of my afternoon doing some admin: monthly reports, target checking, timesheets etc. As the [ScARF](#) project I'm working on is funded (thank you, [Historic Environment Scotland & Museums Galleries Scotland!](#)) I need to dedicate time to considering my work in the context of outcomes and indicators. As I've not been in the job long (question from my boss: "when I can stop

calling you 'new'?) this also helps me focus my work as I continue to get to grips with the wider ScARF project.



Targets, outcomes, indicators, targets, outcomes, indicators...

Admin duly administrated, I can focus back on preparatory work for Orkney. I'll be giving a few talks when I'm there, spreading the ScARF and museums gospel, so I'm busy drawing up plans for what these will entail. Though I've mentioned Orkney already, it's not just there that I'll be working with museums. Later on in the project I'll also be working with the Aberdeenshire Council museums service on their collections. While both museums services have **Recognised Collections** and rich archaeological landscapes around them, they are both really different. It'll be interesting to see how each museum service benefits from our project, and how our work varies with the different museums involved.



Meeting notes, to-do lists, mind-maps. Therein lies the heart of the museum project. And tea. Always tea.

In preparing talks and any work for Orkney I need to consider how relevant it might also be to Aberdeenshire – I don't want to have to reinvent the wheel when it comes to working with my colleagues there later on. The main research topics I'm looking at just now are farming and fishing, so I return to my trusty documents (the ScARF panel reports are free to view online or download here) and see how they're referenced, and how museums might already have contributed to them.

Perhaps in a couple of months time I'd have some rather more exciting photos to share (who doesn't love a good museum store?) but for now these will have to do. Last but not least... why not sign up to our monthly e-newsletter at <http://eepurl.com/bCFibT> to keep up-to-date with all things ScARF.