



## Great Bowden Heritage & Archaeology

### Field Walking and Metal Detecting at Sixteens Acres Field, Gallow Lodge Farm, Great Bowden, Leicestershire.

**Grid Reference:** western hedgeline: SP72950 90750; eastern hedgeline SP73450 90700

**Date:** 23rd October 2011- 6th November 2011

**Site Code:** GBH2011 16SA

**Area walked:** 13.16 hectares



**Location:** The field is part of Gallow Lodge Farm. It is the first arable field to the east of the farmhouse. The farm lies within Great Bowden Parish north of the by-pass towards the northern parish boundary. (*Fig.1 right*)

The name Sixteens Acres derives from the removal of the hedge between 2 x 16 acre fields; the total acreage is now approximately 32 acres.

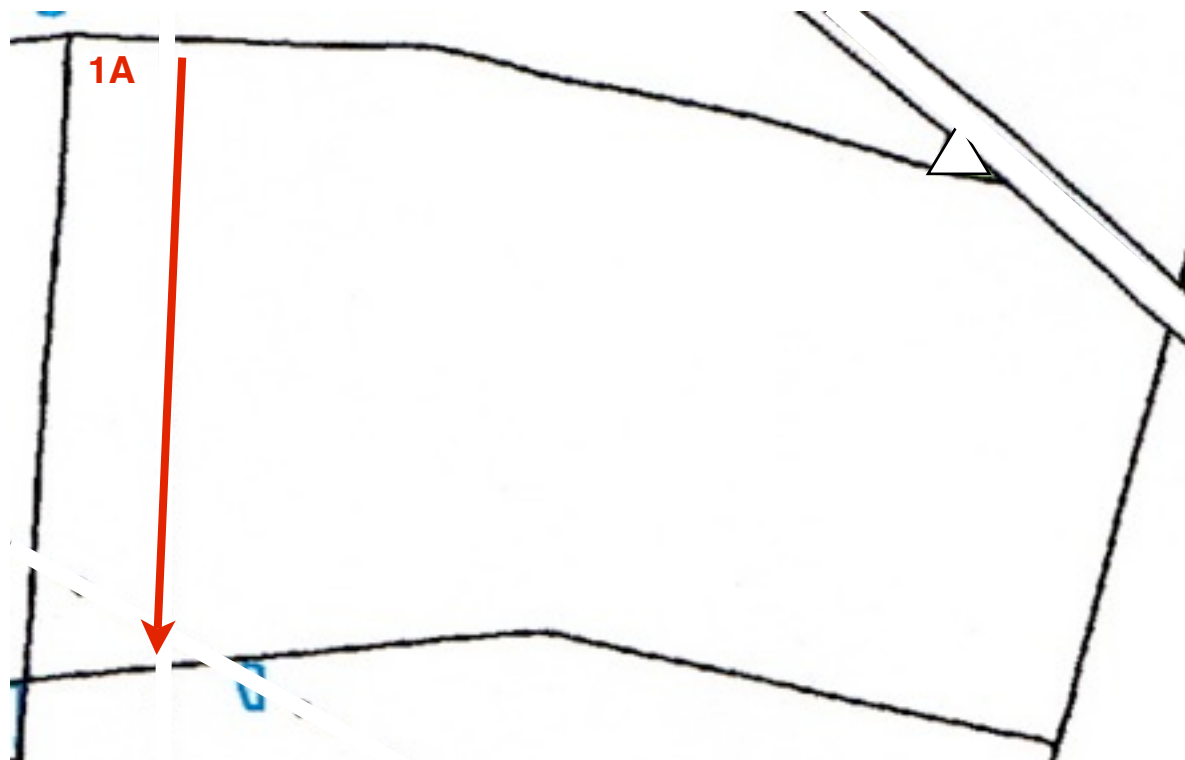
This field is to the east of a ridge and furrow pasture. Both fields slope downwards towards the south. These fields were part of the North or Galou field of the medieval open field system of Great Bowden. It may have been converted to pasture after Enclosure in the late 18th century and possibly ploughed up again during the Second World War.

**Associated Documents:** No documents were identified but the farmer said that in the past a metal detecting survey was made of the whole farm.

**Method:** The field had been shallow ploughed and the oil seed rape crop was already growing; the soil was very dry. The condition of the crop and the state of the soil made it difficult to spot pottery sherds while field walking. There was also grass growing amongst the crop which made the search more difficult. The field was walked in 25 traverses 20 metres apart along the northern boundary with stint changes at 30 metre intervals along the traverses.

The finds from this field walking session were disappointing. Conditions were not good for field walking and more finds from the medieval period would have been expected. This is the first field from the North Field of the open field system that the group has field walked and further field walking in the north of the parish may reveal whether this is abnormal or that these more remote fields had less manure spread and therefore less pottery deposited.

**MAP** (fig. 2 left)



1A denotes the starting point of the field walking.  
The arrow denotes the direction of the 25 traverses at 20 metre intervals, approximately north-south.

## **Finds Summary:**

Prehistoric = 6 flints

Roman = 4 sherds (greyware and colour coat)

Early medieval and medieval = 12 sherds (Stamford ware, Bourne ware, Sandyware, Cistercian ware, Lyveden Stanion oolitic limestone ware)

Early post medieval and post medieval = 38 sherds (earthenwares including pancheons, mottled ware, blue and white ware, Midland Black and stoneware)

Modern, white and blue and white sherds not counted.

Detailed list is given below.

## **Finds from Field Walking at Sixteens Acres Field, Gallow Lodge Farm, Great Bowden on 23rd October 2011**



The finds were initially identified by Great Bowden Heritage and later verified by Leicestershire County Council Community Archaeologist.

The finds were returned into the safe-keeping of the landowner.

GBH2011 16SA 1A	post medieval 1 x pancheon
GBH2011 16SA 1C	post medieval 1 x clay pipe stem (small bore)
GBH2011 16SA 1E	post medieval 1 x 19th century floor tile
GBH2011 16SA 2A	early medieval 1 x rock & shell tempered sandyware
GBH2011 16SA 2A	post medieval 1 x mottled ware
GBH2011 16SA 2A	post medieval/modern 2 x blue & white pottery
GBH2011 16SA 2A	post medieval/modern 4 x white & blue & white china
GBH2011 16SA 2F	late medieval 1 x Cistercian ware CW
GBH2011 16SA 2F	post medieval 1 x clay pipe stem (small bore)
GBH2011 16SA 3B	prehistoric 1 x flint, retouched small flake
GBH2011 16SA 3B	medieval 1 x sandyware handle (salt glaze)

GBH2011 16SA 3B	post medieval 1 x clay pipe stem (large bore)
GBH2011 16SA 4A	post medieval 1 x pancheon
GBH2011 16SA 4C	early post medieval 1 x Earthenware EA1
GBH2011 16SA 4C	post medieval 1 x pancheon
GBH2011 16SA 4C	post medieval/modern 1 x blue & white china
GBH2011 16SA 4E	post medieval 1 x clay pipe stem (small bore)
GBH2011 16SA 5B	prehistoric 1 x flint, blade core
GBH2011 16SA 5D	Roman 1 x colour coat
GBH2011 16SA 5F	1 x industrial waste, iron slag
GBH2011 16SA 5G	post medieval/modern 1 x blue & white pottery
GBH2011 16SA 5G	modern 1 x glass base or lid
GBH2011 16SA 5H	post medieval 1 x Midland Black MB, base (red fabric)
GBH2011 16SA 7	prehistoric 1 x microlith
GBH2011 16SA 7	medieval (knife trimming marks) unidentified type
GBH2011 16SA 7	post medieval 1 x mottled ware base
GBH2011 16SA 7	post medieval 1 x stoneware
GBH2011 16SA 7	post medieval 1 x pancheon ware
GBH2011 16SA 8C	post medieval 1 x stoneware handle
GBH2011 16SA 8C	post medieval 1 x clay pipe stem (large bore)
GBH2011 16SA 8F	medieval 1 x Lyveden Stanion ware (LY1) or sandyware
GBH2011 16SA 8G	prehistoric 1 x flint flake
GBH2011 16SA 8G	date and type unidentified, gritted
GBH2011 16SA 8G	post medieval 1 x pancheon ware
GBH2011 16SA 9E	early medieval 1 x sandyware
GBH2011 16SA 9F	1 x industrial waste (lightweight)
GBH2011 16SA 9G	date unknown 1 x sandyware, (grit & quartz visible)
GBH2011 16SA 9G	unknown date, 1 x unidentified tile
GBH2011 16SA 9G	medieval 1 x LY1
GBH2011 16SA 9G	post medieval 1 x pancheon

GBH2011 16SA 9G	1 x industrial waste or residue
GBH2011 16SA 10A	Roman 1 x greyware
GBH2011 16SA 10A	post medieval 1 x pancheon
GBH2011 16SA 10G	medieval 1 x LY1
GBH2011 16SA 10G	post medieval/modern 1 x white china
GBH2011 16SA 11A	post medieval/modern 1 x glass
GBH2011 16SA 11B	early medieval 1 x Stamford ware?
GBH2011 16SA 11C	post medieval 1 x pancheon
GBH2011 16SA 11I	post medieval 1 x pancheon
GBH2011 16SA 13D	medieval 1 x LY1
GBH2011 16SA 13D	post medieval 1 x pancheon
GBH2011 16SA 15A	post medieval 1 x heavy pottery blue & white
GBH2011 16SA 16A	prehistoric flint tool (retouched edge?)
GBH2011 16SA 20D	prehistoric burnt flint, multi removals
GBH2011 16SA 20D	Roman 1 x colour coat
GBH2011 16SA 20D	post medieval 2 x pancheon
GBH2011 16SA 20G	post medieval/modern 1 x china
GBH2011 16SA 21C	post medieval/modern 2 x white china

**Random. Picked up during metal detecting**

GBH2011 16SA R	early medieval 1 x Bourne Ware
GBH2011 16SA R	medieval 1 x LY1
GBH2011 16SA R	post medieval 2 x pancheon

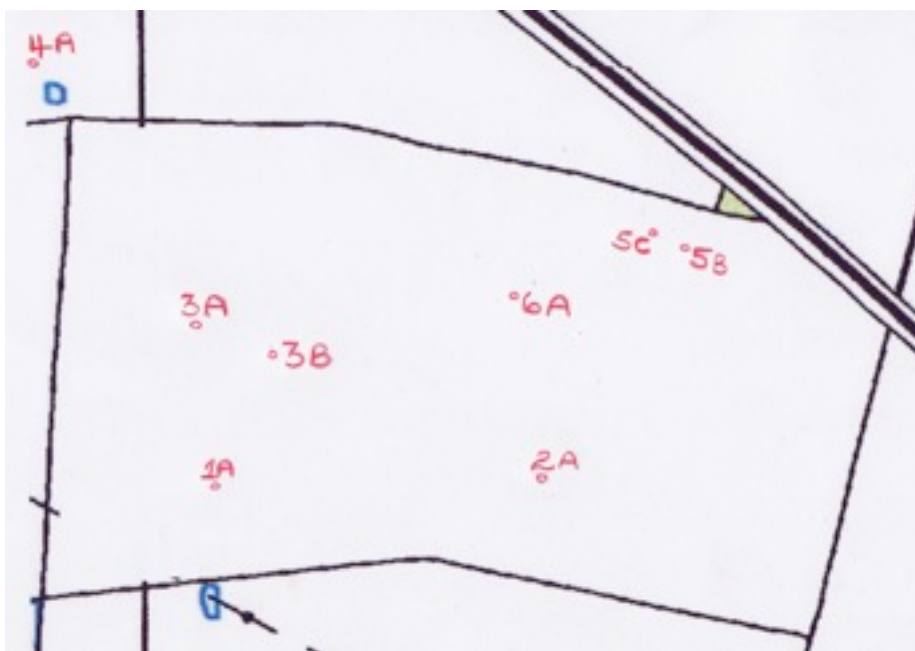
## Beyond the northern hedgeline

GBH2011 16SA R	Roman 1 x colour coat
GBH2011 16SA R	early post medieval 1 x CW/MB
GBH2011 16SA R	post medieval 1 x pancheon



## Finds from Metal Detecting on Sixteens Acres Field, Gallow Lodge Farm, Great Bowden on 8th November 2011

Each metal detectorist was given a separate section of the field to survey. The approximate position of each find is marked by the corresponding code number on the map below. With the farmer's permission some metal detecting survey work was carried out in the field to the immediate north of Sixteens Acres.



### Map (fig. 3 left)

Showing position of metal detecting finds within Sixteens Acres Field.

The finds listed below contain the comments made by the Finds Liaison Officer based at Leicestershire County Council who verified the finds.

The metal finds were also returned into the safe-keeping of the landowner.

**Verified Finds:** The metal detecting was carried out 2 weeks after field walking. Each detectorist was given a separate section of the field to survey.

- |                    |   |
|--------------------|---|
| GBH2011 MD 16SA 1A | Heavy iron weight with loop at the top: weight = 1770 gms total length 22.5 cms - (Finds Liaison Officer comment - undiagnostic)  |
| GBH2011 MD 16SA 2A | Part of Iron plough. Farmer thinks this may have come from a Ferguson tractor from 1930s-1940s. If the field was first ploughed during WWII this may have come from early ploughing in 1940s. |
| GBH2011 MD 16SA 3A | Alloy stirrup- (FLO comment - post medieval probably 18-19th century.   |
| GBH2011 MD 16SA 3B | Mid 17th century possibly silver, cuff link button commemorating Restoration of Charles II. See illustration Fig. 4. Grid reference for findspot is SP73100 90750.                            |
| GBH2011 MD 16SA 4A | Metal button 2.5 cm diameter found in adjacent field north of 16S Acre. (FLO comment - 18th century 'Dandy' button)   |
| GBH2011 MD 16SA 5B | Small twisted lead strip - (FLO comment - undiagnostic)   |
| GBH2011 MD 16SA 5C | Triangular fragment, probably from iron plough.   |
| GBH2011 MD 16SA 6A | Bent iron rod 5-6mm diameter, corroded (FLO comment - undiagnostic)   |



*Fig.4 Cuff link button commemorating the Restoration of Charles II mid 17th century - see GBH2011 MD 16SA 3B above.*