

1 Data structure

- 1.1 The data is supplied with the folder structure shown in **Table 1.1**.
- 1.2 In order for the MXD to function correctly, the file structure, naming and location of the files should be kept in this format. Moving or renaming files will result in broken links in the project file (MXD).

Table 1.1 Folder structure

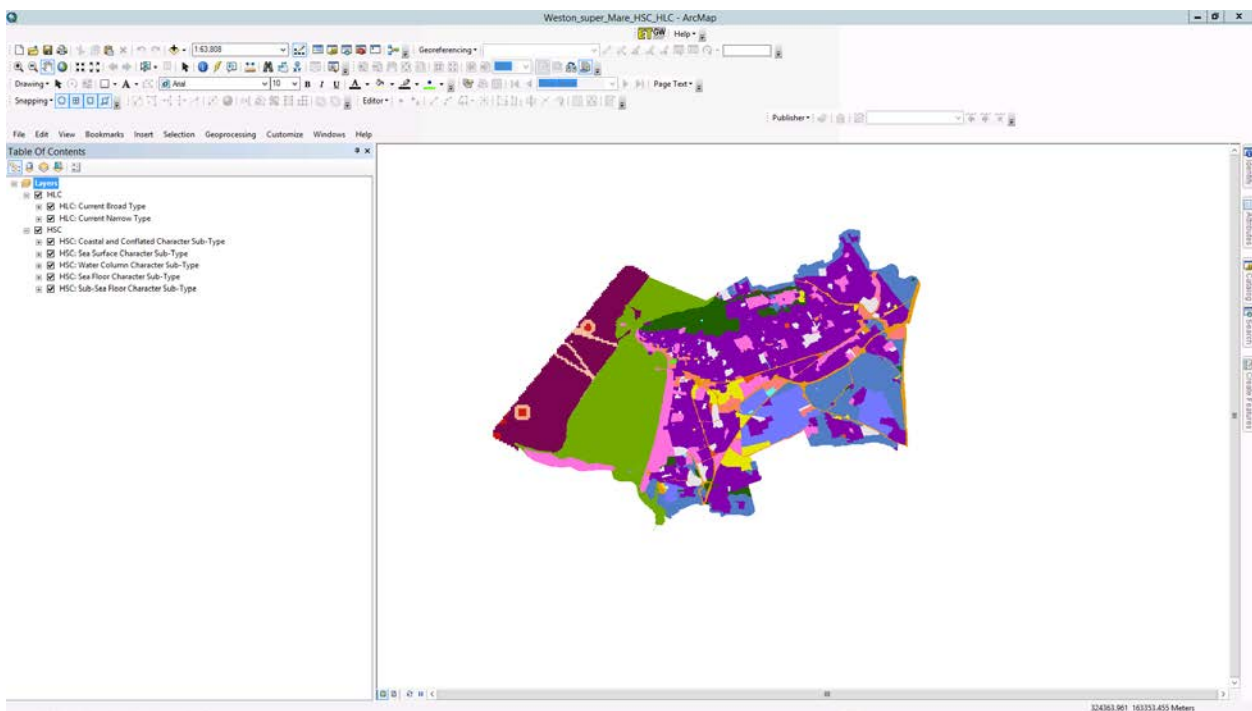
Folder Name	Files contained
Data	Geodatabase containing HSC and HLC
Data_9_3_1	Geodatabase containing HSC and HLC in format compatible with ArcMap 9.3.1
LayerFiles	2 HLC layer files (HLC Broad Type, HLC Narrow Type) 3 HSC layer files (copies from the NHSC database)
MXD	MXD
MXD_9_3_1	MXD in format compatible with ArcMap 9.3.1
Texts	HSC and HLC texts

2 Using the HSC and HLC data

Loading and navigating the MXD

- 2.1 **Figure 2.1** shows how the MXD will appear once loaded. There are symbolised layers set up for both the HSC and the HLC. The HSC is shown at each Character Sub-Type and the HLC is shown at both Broad Type and Narrow Type.

Figure 2.1 Screenshot of Weston_super_Mare_HSC_HLC MXD



Use of hyperlinks to the HSC and HLC Texts



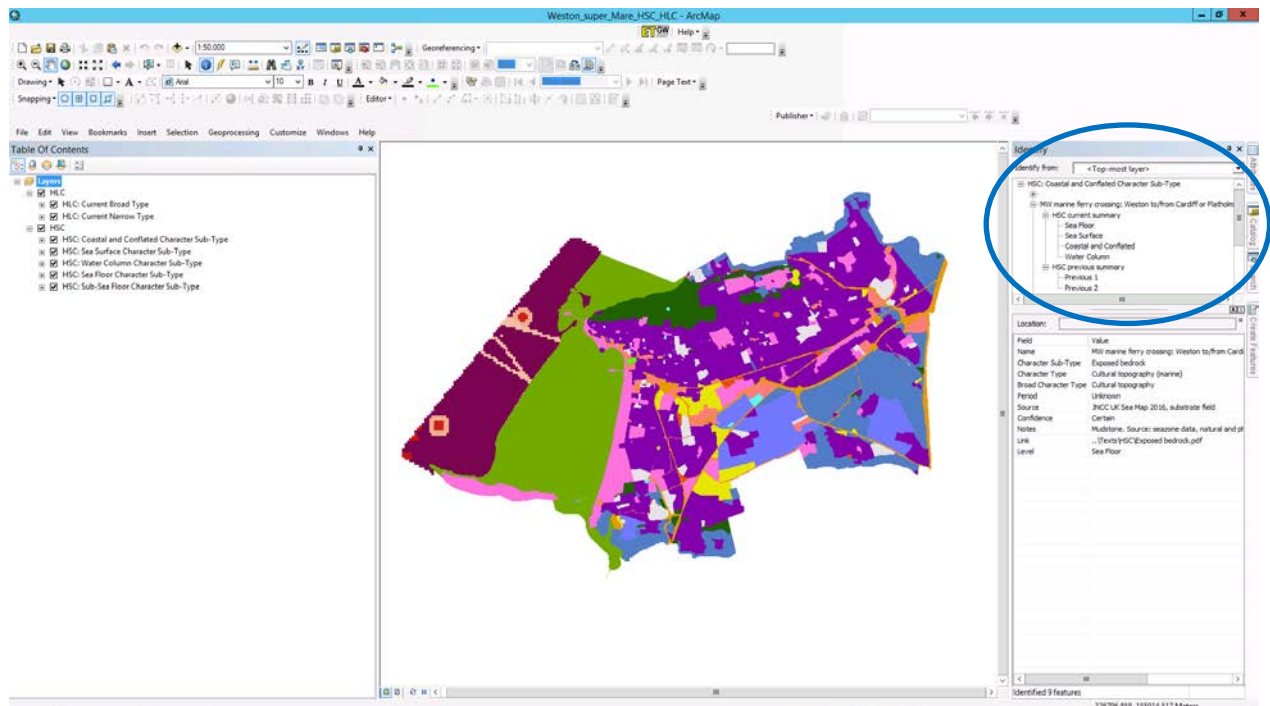
- 2.2 The MXD has been set up to better facilitate access to the attribute data stored in the database. The hyperlinks can be used by activating the hyperlink tool  and clicking on a polygon on the required data set. By doing so, the relevant Text will load.
- 2.3 Alternatively, the hyperlinks for all marine levels and previous types (HSC)/previous types (HLC) can be viewed and selected via use of the identify tool .
- 2.4 **Figure 2.2** shows the identify window pane on the right hand side, the marine levels and previous character are available to choose from and the hyperlink can be activated from the identify tool bar.

Figure 2.2 Use of the identify tool to access all hyperlinks



Layer files

- 2.5 The NHSC symbology is applied to HSC data in the Consolidated_National_HSC MXD and new symbology has been created for the HLC data Broad Types and Narrow Types. If the symbology needs to be applied to the data in a new MXD, the NHSC or newly created HLC layer files can be used.
- 2.6 The layer files can be used by adding them to the MXD with the HSC and/or HSC data. In the data *Properties*, the symbology can be imported from the layer file (**Figure 2.3**).
- 2.7 The new HLC Narrow Type layer file is grouped by Broad Type (example shown in **Figure 2.4**).

Figure 2.3 Applying a layer file

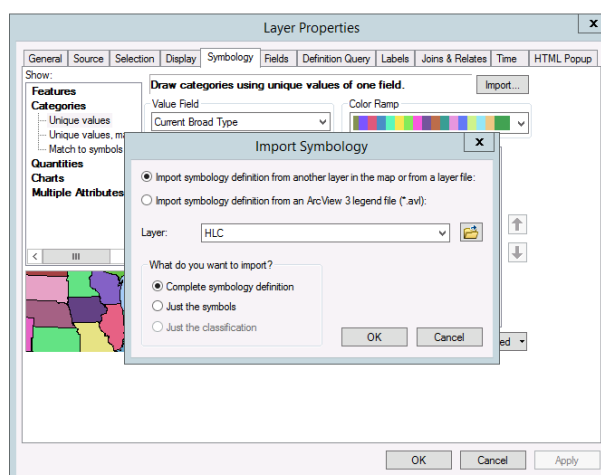


Figure 2.4 Example of Narrow Type symbology grouped by Broad Type.

-
- ☒ HLC: Current Narrow Type
- Civic Amenities
 - Reservoir
 - Waste Disposal (Recycling)
 - Waste Disposal (Sewage Works)
 - Civic Provision
 - Cemetery
 - Civic Centre
 - College Campus
 - Court House
 - Crematorium Complex
 - Emergency services
 - Government Office
 - Hospice
 - Hospital
 - Library Complex
 - Medical Centre
 - Museum Complex
 - Place Of Worship (Church)
 - School
 - Commerce
 - Business Park
 - Distribution Centre
 - Hotel
 - Public House