

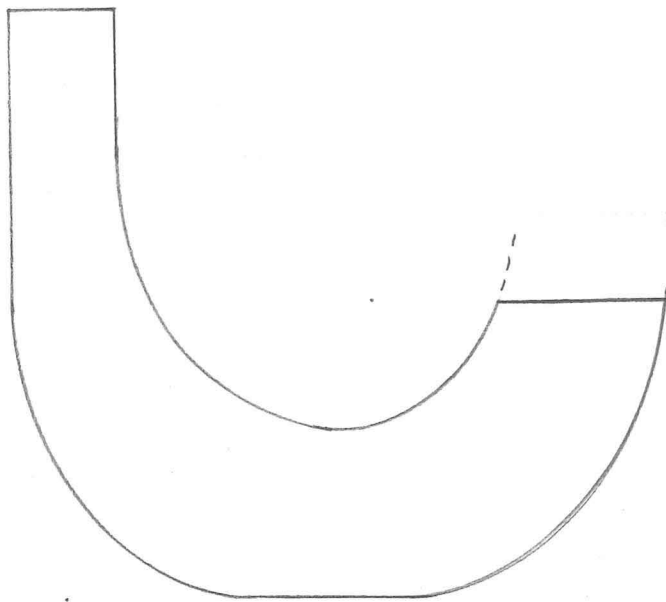
Context/record sheet

Humberstone Archaeological Unit

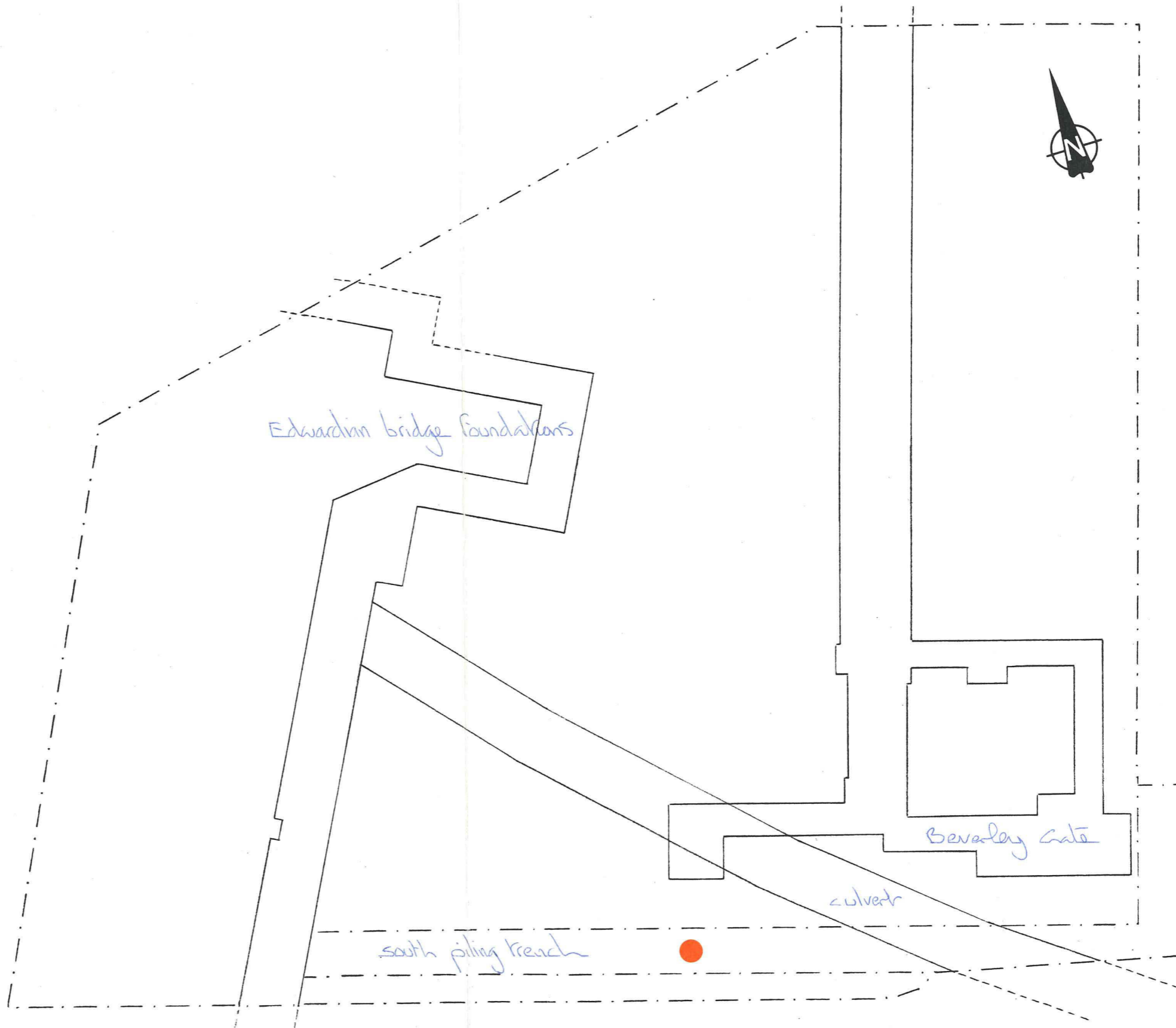
south piling		see attached map		Site code BG '88		Context/Record no. T.1.	
A Location trench		Grid ref. map		Form		Orientation E-W.	
Category Timber Water Pipe				Diameter		Height/Depth 39cm	
B Length 60cm		Width 43cm		Level			
Co-ordinates				T.B.M. =		B.S. = + F.S. = -	
Plan no.		Section no.		Photo b/w		Photo c <input checked="" type="checkbox"/>	
Soil	Colour			Type			
	Consistence			Inclusions			
Structure	Building materials		Unit sizes		Coursing/Bond		
					Bonding material		
C Description and comments							
see over							
Date encountered 14/9/88		Excavation method SCB			% Level of disturbance		
D Stratigraphic relationships							
	Soil	Cut Feature	Structure				
Earlier than	Below	Below	Below				
	Seated by	Cut by	Butted by				
	Overlapped by	Contains	Cut by				
	Cut by		Encloses				
Contemp with	Part of	Part of	Part of				
	Merges with	Includes	Joined with				
	Includes		Includes				
Later than	Above	Cut from	Above				
	Seals	Cuts	Butted to				
	Overlaps		Cuts				
	Lies against		Driven into				
	Contained by		Contained by				
Same as		Characteristically similar to					
E Provisional interpretation							
Note book refs. _____							
				Matrix		Phase	Date
F Finds	Pottery			Recorded finds			
	Animal bone						
Samples	Soil	Wood <input checked="" type="checkbox"/>	R/Carbon	Masonry	Brick	Tile	Slag
G Originator(s) P.H.				Checked by		Date 14/9/88	

Wooden water pipe : end view

scale 1-5



site: Beverley Gate 88
scale: 1-150
date: 14/9/88



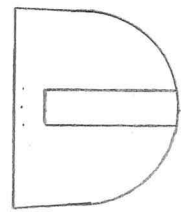
● location of T.I.

Context/record sheet

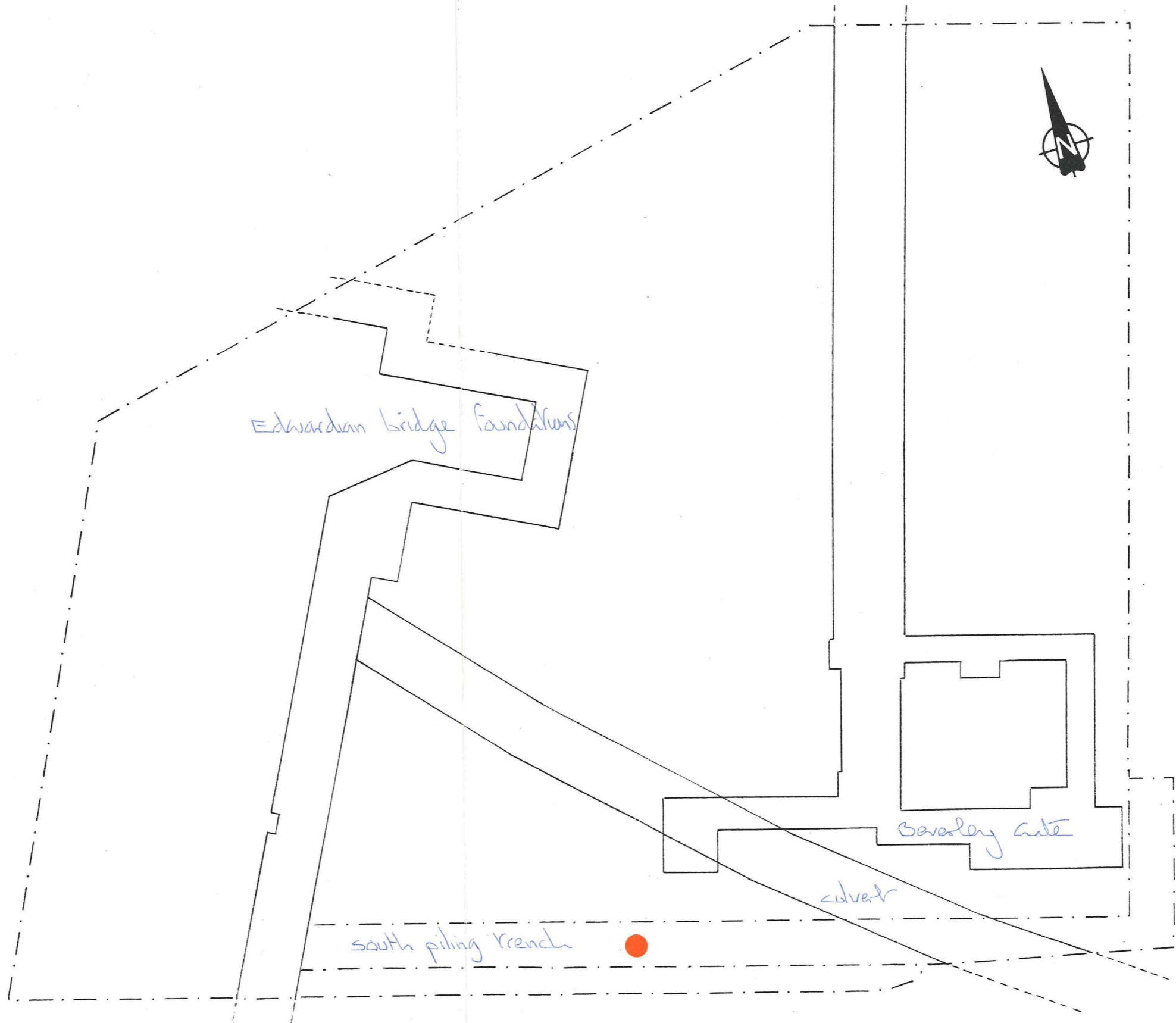
Humberside Archaeological Unit

<i>south piling trench</i> <i>see attached map</i>		Location <i>see attached map</i>	Grid ref. <i>see attached map</i>	Site code <i>BG 88</i>	Context/Record no. <i>T.2.</i>
Category <i>Timber.</i>			Form		Orientation <i>E-W.</i>
Length <i>141 cm</i>		Width <i>26 cm</i>		Diameter <i>3 cm (dowel hole)</i>	Height/Depth <i>22 cm</i>
Co-ordinates				Level T.B.M. = B.S. = + F.S. = -	
Plan no.			Section no.		Photo b/w
Soil	Colour			Type	
	Consistence			Inclusions	
Structure	Building materials		Unit sizes		Coursing/Bond
Bonding material					
C Description and comments <i>Timber post or beam with central venon with dowel hole.</i>					
<i>see over for sketch</i>					
Date encountered <i>14/9/88</i>		Excavation method <i>ICB</i>		% Level of disturbance	
D Stratigraphic relationships					
		Soil	Cut Feature		Structure
Earlier than	Below	Below	Below	Butted by	
	Sealed by	Cut by		Cut by	
	Overlapped by	Contains		Encloses	
	Cut by				
Contemp with	Part of	Part of	Part of	Part of	
	Merges with	Includes		Joined with	
	Includes			Includes	
Later than	Above	Cut from		Above	
	Seals	Cuts		Butted to	
	Overlaps			Cuts	
	Lies against			Driven into	
	Contained by			Contained by	
Same as		Characteristically similar to			
E Provisional interpretation <i>possibly from gate bridge or road revetment</i>					
Note book refs.					
			Matrix	Phase	Date
F Finds					
Finds	Pottery		Recorded finds		
	Animal bone				
Samples	Soil	Wood	R/Carbon	Masonry	Brick
		✓			
G Originator(s) <i>P.H.</i>		Checked by			Date <i>14/9/88</i>

scale 1-10



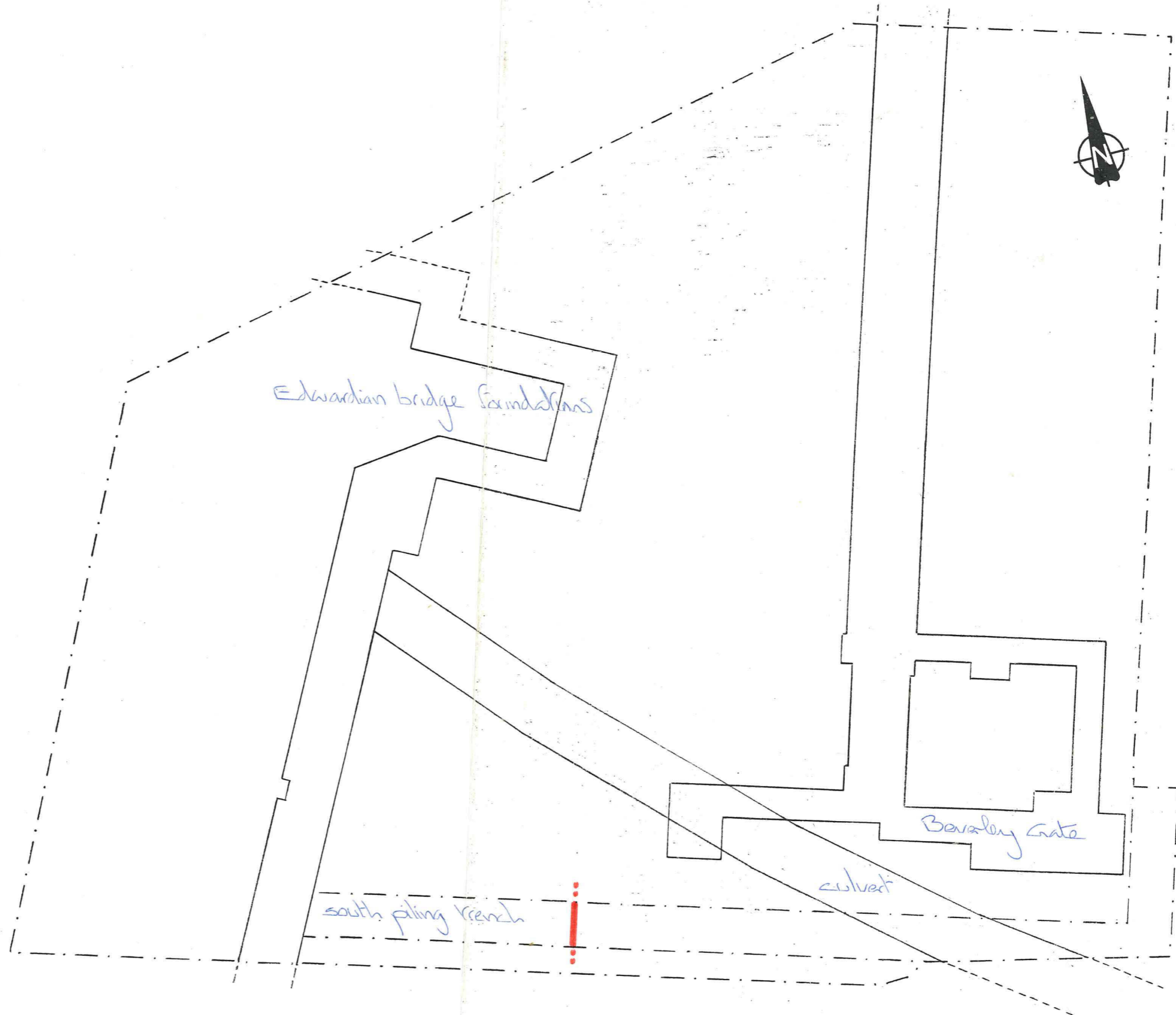
site: Beverley Gate 88
scale: 1-100
date: 14/9/88



● location of T.2.

A		Location <i>south piling trench</i>		Grid ref. <i>see attached map</i>		Site code <i>BG'88</i>		Context/Record no. <i>T3-T28</i>																																																																																																																																		
B		Length		Width		Diameter		Height/Depth																																																																																																																																		
Category <i>Timber</i>				Form		Orientation																																																																																																																																				
Co-ordinates				Level		T.B.M. =		B.S. = +		F.S. = -																																																																																																																																
Plan no.			Section no.			Photo b/w		Photo c <input checked="" type="checkbox"/>																																																																																																																																		
Soil	Colour			Type																																																																																																																																						
	Consistence			Inclusions																																																																																																																																						
Structure	Building materials		Unit sizes		Coursing/Bond																																																																																																																																					
					Bonding material																																																																																																																																					
C Description and comments																																																																																																																																										
<i>several worked timbers removed from a depth of c. 3.60m. Timbers recovered include posts, beams and planks.</i>																																																																																																																																										
Date encountered <i>14/9/88</i> Excavation method <i>SCB</i> % Level of disturbance																																																																																																																																										
D Stratigraphic relationships																																																																																																																																										
<table border="1"> <thead> <tr> <th colspan="2"></th> <th colspan="2">Soil</th> <th colspan="2">Cut Feature</th> <th colspan="2">Structure</th> </tr> </thead> <tbody> <tr> <td rowspan="4">Earlier than</td> <td>Below</td> <td colspan="2"></td> <td>Below</td> <td colspan="2"></td> <td>Below</td> <td colspan="2"></td> </tr> <tr> <td>Sealed by</td> <td colspan="2"></td> <td>Cut by</td> <td colspan="2"></td> <td>Butted by</td> <td colspan="2"></td> </tr> <tr> <td>Overlapped by</td> <td colspan="2"></td> <td>Contains</td> <td colspan="2"></td> <td>Cut by</td> <td colspan="2"></td> </tr> <tr> <td>Cut by</td> <td colspan="2"></td> <td></td> <td colspan="2"></td> <td>Encloses</td> <td colspan="2"></td> </tr> <tr> <td rowspan="3">Contemp with</td> <td>Part of</td> <td colspan="2"></td> <td>Part of</td> <td colspan="2"></td> <td>Part of</td> <td colspan="2"></td> </tr> <tr> <td>Merges with</td> <td colspan="2"></td> <td>Includes</td> <td colspan="2"></td> <td>Joined with</td> <td colspan="2"></td> </tr> <tr> <td>Includes</td> <td colspan="2"></td> <td></td> <td colspan="2"></td> <td>Includes</td> <td colspan="2"></td> </tr> <tr> <td rowspan="5">Later than</td> <td>Above</td> <td colspan="2"></td> <td>Cut from</td> <td colspan="2"></td> <td>Above</td> <td colspan="2"></td> </tr> <tr> <td>Seals</td> <td colspan="2"></td> <td>Cuts</td> <td colspan="2"></td> <td>Butted to</td> <td colspan="2"></td> </tr> <tr> <td>Overlaps</td> <td colspan="2"></td> <td></td> <td colspan="2"></td> <td>Cuts</td> <td colspan="2"></td> </tr> <tr> <td>Lies against</td> <td colspan="2"></td> <td></td> <td colspan="2"></td> <td>Driven into</td> <td colspan="2"></td> </tr> <tr> <td>Contained by</td> <td colspan="2"></td> <td></td> <td colspan="2"></td> <td>Contained by</td> <td colspan="2"></td> </tr> <tr> <td colspan="2">Same as</td> <td colspan="8">Characteristically similar to</td> </tr> </tbody> </table>												Soil		Cut Feature		Structure		Earlier than	Below			Below			Below			Sealed by			Cut by			Butted by			Overlapped by			Contains			Cut by			Cut by						Encloses			Contemp with	Part of			Part of			Part of			Merges with			Includes			Joined with			Includes						Includes			Later than	Above			Cut from			Above			Seals			Cuts			Butted to			Overlaps						Cuts			Lies against						Driven into			Contained by						Contained by			Same as		Characteristically similar to							
		Soil		Cut Feature		Structure																																																																																																																																				
Earlier than	Below			Below			Below																																																																																																																																			
	Sealed by			Cut by			Butted by																																																																																																																																			
	Overlapped by			Contains			Cut by																																																																																																																																			
	Cut by						Encloses																																																																																																																																			
Contemp with	Part of			Part of			Part of																																																																																																																																			
	Merges with			Includes			Joined with																																																																																																																																			
	Includes						Includes																																																																																																																																			
Later than	Above			Cut from			Above																																																																																																																																			
	Seals			Cuts			Butted to																																																																																																																																			
	Overlaps						Cuts																																																																																																																																			
	Lies against						Driven into																																																																																																																																			
	Contained by						Contained by																																																																																																																																			
Same as		Characteristically similar to																																																																																																																																								
E Provisional interpretation																																																																																																																																										
<i>possibly part of gate bridge or road revetment</i>																																																																																																																																										
Note book refs.																																																																																																																																										
					Matrix		Phase		Date																																																																																																																																	
F																																																																																																																																										
Finds	Pottery			Recorded finds																																																																																																																																						
	Animal bone																																																																																																																																									
Samples	Soil	Wood	R/Carbon	Masonry	Brick	Tile	Slag																																																																																																																																			
		<input checked="" type="checkbox"/>																																																																																																																																								
G Originator(s) <i>P.H.</i>					Checked by			Date <i>14/9/88</i>																																																																																																																																		

site: Beverley Gate 88
scale: 1-100
date: 14/9/88



| location of T.3 - T.28.