

OLD ORME BOYS' SCHOOL, ORME ROAD,  
NEWCASTLE UNDER LYME.

BUILDING RECORDING REPORT

PART 2

CATALOGUE OF PLATES.

CLIENT: KETTLE AND TALBOT

APRIL 2018

PREPARED BY HELEN MARTIN-BACON, PRINCIPAL  
HERITAGE CONSULTANT, MCIFA.



This report has been prepared by Commercial Archaeology Ltd with all reasonable skill, care and diligence in accordance with the terms of the contract with the Client. The report is confidential to the Client and Commercial Archaeology Ltd accepts no responsibility of whatever kind to third parties to whom this report may be made known. This document has been prepared with the best data made available at the time of the survey. It is not possible to guarantee the accuracy of secondary data provided by another party or source.

The report has been prepared in accordance with the standards and guidelines issued by the Chartered Institute for Archaeologists.

Copyright of this document is held by Commercial Archaeology Ltd and has been prepared for use by the Client for all reasonable use and for the purpose of this project.



Read in conjunction with appendix 2 – directional photo plans. Numbers in red relate to individual direction photos taken of the interiors of buildings.

## Building 1 Old Orme Boys' School Interior/Ground Floor



Plate 1. Porch to main entrance to the school showing Edwardian date redbrick additions. **1**



Plate 2. Mid to late 19<sup>th</sup> century entrance hall showing an existing arch and one blocked, pointed arch. Modern ceiling with wiring. Blocked arch possible entrance to the original mid-19<sup>th</sup> century school. New arch probably inserted during phase of later 19<sup>th</sup> century expansion. **8**



Plate 3. View towards entrance to master's house opening onto Higherland, part of the original mid-19<sup>th</sup> century school. **9**



Plate 4. Detail of framed, ledged and braced door, in eastern elevation of original school building. Entrance to master's house from Higherland 11



Plate 5. View of original main hall looking towards eastern bay window. 'High' end of the hall. 15



Plate 6. View of original main hall looking towards the western window. 'Low' end of hall. 18

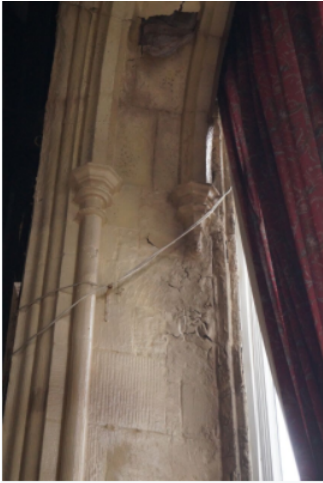


Plate 7. Detail of polished stone pillar with capital on eastern bay window. Original feature. **16**



Plate 8. Detail of base decoration of stone pillar, eastern bay window. **17**



Plate 9. Example of lancet arched windows in the eastern elevation of the main hall with stone mullions and central transom. Hopper windows above and below transom, possibly original. Interior faced by modern UPVC secondary glazing. **26**



Plate 10. Doorways in north east corner of the main hall. The doorway on the right is the original external doorway to the porch and that on the left is the original doorway to spiral staircase leading to turret. **19**



Plate 11. Detail of original doorway to porch showing original gothic revival style door with decorated strap hinges. **20**



Plate 12. Detail of blocked archway in porch. The arches in the porch were originally open. **21, 22**



Plate 13. Detail of gargoyle decoration in the porch. 23



Plate 14. Shot of original stone mullioned window in Office 1 (the master's house). Window is divided by a central transom with four fixed lights below transom and two hopper windows either side of two fixed lights above transom. Stone probably painted white as part of later modernisation. 31



Plate 15. Office 2 (the master's house), original moulded stone fire surround with mantle. Fire place now blocked up with central vent remaining, probably as a result of modernisation. 32



Plate 16. Classroom 1 showing probable original entrance from the mid-19<sup>th</sup> century demolished part of the school. Became redundant when the school was extended circa later 19<sup>th</sup> century and a new entrance inserted. The decorative theme belongs to the Edwardian phase of school use. 37



Plate 17. Classroom 2 showing construction detail of the brick wall of the late 19<sup>th</sup> century school extension. 40



Plate 18. Staircase inserted to create access from the late 19<sup>th</sup> century building into the Edwardian extension. Stairwell is decorated with a painted dado line. 44



Plate 19. Upper hall in Edwardian addition showing stairs to first floor and small ancillary room under the stairs. A tiled dado-style rail signifies early 20<sup>th</sup> century décor contemporary with the construction of this phase of the school.

The lower hall way – see Plate 29, was painted to make it consistent with the same decorative style, but lacks the tiled dado feature itself. 46



Plate 20. View into ancillary room below first floor staircase. 48



Plate 21. Detail of a small window in east elevation constructed with a stone frame and mullion housing fixed, leaded lights. 49





Plate 22. Detail of polished stone floor in upper corridor. 53



Plate 23. General view of Classroom 3 showing same decorative theme which characterises the Edwardian phase of the school. Window on left looks into upper corridor. Parquet flooring extant. 58



Plate 24 General view of Classroom 5, showing early Edwardian stone windows with fixed lights interspersed with hoppers. Parquet flooring extant. 61



Plate 25. General view of basement showing arched brick flues/vents. 104,



Plate 26. Cast iron stove in basement. 106



Plate 27. Coal chute in basement. 108



Plate 28. View of spiral staircase in tower looking down from the turret room. **111**



Plate 29 View into turret room showing wooden hatch in floor. **115**



Plate 30. View through hatch into porch below. **120**



Plate 31. Sample of graffiti on walls of the turretroom. Dates identified from the 1940s and 1950s. [121](#)



Plate 32. View up into turret roof. It could not be ascertained with certainty whether the tower contained a bell. If it did this might explain the function of the hatch through which bell ropes may have been dropped. [122](#)

## Building 1 Old Orme Boys' School Interior/First Floor



Plate 33. Stairway, showing original metal bannister and handrail. Note that the handrail has regularly placed metal nodules to prevent children sliding down the bannister. **83**



Plate 34 First floor landing showing modern additions/alterations, an original hammer beam truncated by modern partition wall. **82**



Plate 35. Detail of doors on first floor providing access to Classrooms 7 & 8 in later 19<sup>th</sup> century part of the school. **84**



Plate 36. General view of Office 3 on first floor adjacent to the landing, original beam partly obscured by modern additions. 86



Plate 37. Office 4 showing modern additions to original mid-19<sup>th</sup> century building. This was the upstairs to the master's house. Note the arched opening on the left of the photograph. 88



Plate 38. Detail of arched opening in the west wall of Office 4. Function uncertain but may be the remains of a window which would originally have looked out onto the courtyard. 89



Plate 39. Example of stone mullioned, dormer window looking out onto Higherland. Upper storey of master's house. [90](#)



Plate 40. General shot of Classroom 2 looking towards original window in west elevation of the mid-late 19<sup>th</sup> century extension. [93](#)



Plate 41. General shot looking from Classroom 8 into Classroom 1. Shows pointed arch doorway and ceiling beams obscured by modern additions. [94](#)



Plate 42. Kitchen fixtures and fittings in Classroom 2 arising from use of the school as a community centre. 95

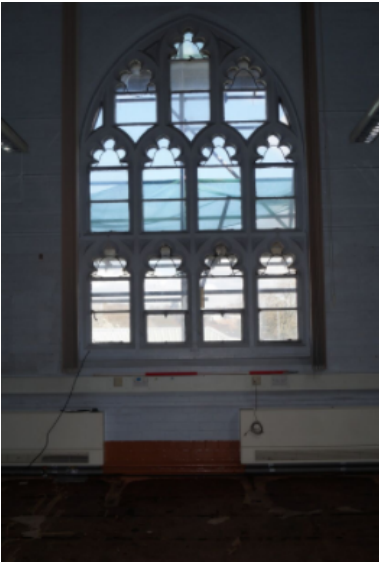


Plate 43. Stone window in east wall of Classroom 1 with trefoil tracery in the mid-late 19<sup>th</sup> century extension. 97



Plate 44. Front of framed ledged and braced door between Classroom 2 and landing. 96





Plate 45. Detail of iron door handle with decorated backplate. Original feature in line with Gothic Revival style. 98



Plate 46. Detail of decorative latch fixed to drop handle. 99



Plate 47 – View of staircase to first floor in Edwardian extension showing typical period decoration. 50



Plate 48– General view of upstairs hallway. To the left of the photograph, internal windows into Classroom 3. **70**



Plate 49. General view of Classroom 3 showing modern additions. Heating system dating to 1920s in situ. Floor covered with modern carpet tiles. **72**



Plate 50. Detail of original hammer beam, obscured by the remains of a modern false ceiling. **76**



Plate 51. View of stone mullioned windows with hopper windows at the base of the window. Trefoil tracery on central window and remains of leaded decoration on upper lights of side windows. Late 19<sup>th</sup> century extension. 76

## Building 2 – Edwardian Building/Interior Ground floor



Plate 52. Main entrance with view to outside. 126

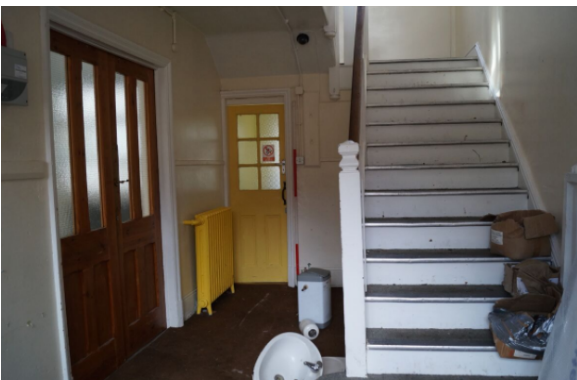


Plate 53. Main entrance with view of stairs to first floor. 124



Plate 54. Main entrance with view of stairs to first floor. 125



Plate 55. Office off main entrance. 127



Plate 56. Large classroom on ground floor. Ceiling supported by RSJs. 129



Plate 57. Door to toilet in main entrance with original radiator to the fore. 131

## Building 2 Edwardian School/Interior First Floor



Plate 58. Staircase to first floor. 132



Plate 59 onto first floor landing. 133



Plate 60. Classroom on first floor. 134



Plate 61. Detail of door typical of the building as a whole. 137



Plate 62. Wooden gallery in classroom on first floor. Water tank on the left of the picture. 138



Plate 63. View of classroom from gallery.  
139

### Building 3 – Ancillary Building Interior



Plate 64. Toilet and washroom with glazed tiles. 148



Plate 65 Storage room.  
150



Plate 66. – Lath and plaster ceiling in ancillary building. 149



Plate 67. Window detail in toilet block. 152



Plate 68. View of 1970s extension to ancillary building. 154



## Building 1 Old Orme Boys' School Exterior



Plate 69. View of north west facing elevation of mid-19<sup>th</sup> century main hall showing detail of sandstone buttressing and blue brick window jambs..

To the fore is the 1970s kitchen block.



Plate 70. The rear of the mid-19<sup>th</sup> century building showing first floor of the master's house with later Edwardian additions in red-brick.



Plate 71. The north west elevation (rear) elevation of the later 19<sup>th</sup> century extension to the school. To the right of the picture the red-brick Edwardian extension.



Plate 72. View of Edwardian extension at the back of the school. This has not changed since the photograph taken in 1918 (Figure 16)



Plate 73. Boiler room which appears on the 1878 OS map (Figure 6).

Diapering on the main hall elevation is visible.



Plate 74. Detail of graffiti carved on the coping stones above sandstone base of wall.



Plate 75. Detail of entrance to the Edwardian extension to the school.



Plate 76. Detail of fleche on the roof of the Edwardian extension.



Plate 77. Detail of railings at entrance to the Edwardian extension.



Plate 78 Entrance to boiler room serving Edwardian extension. Could not be fully accessed.



Plate 79. Rusticated sandstone wall on Orme Road, behind the wall is the basement boiler room. The window in the wall suggests the wall and boiler room once formed one building.



Plate 80. View looking south east of side elevation of mid-19<sup>th</sup> century main hall with adjoining porch and turret.



Plate 81. Detail of upper part of porch and turret showing lancet window with hood mould.



Plate 82. Front elevation of mid-19<sup>th</sup> century main hall and adjoining masters house.



Plate 83 Front elevation of master's house showing detail of roof ridge cresting, dormer windows and pointed arch entrance with hood label.



Plate 84. Front elevation of late 19<sup>th</sup> century extension adjoining Edwardian addition.



Plate 85. Detail of front elevation of Edwardian extension. The sandstone ashlars are markedly different in appearance to those of the earlier 18<sup>th</sup> century build.



Plate 86. South west elevation of the Edwardian extension facing Higherland. To the rear it is built of red brick.



Plate 87. Detail of Edwardian red brick additions to the main extension.

### Building 2 Edwardian School Exterior



Plate 88. South east (front) elevation of the Edwardian School. To the right is double timber doors mark the entrance to the boiler room.



Plate 89. Detail of entrance to the Edwardian School with foundation plaque above. The entrance has not changed since it was photographed in the early 1900s (Figure 17)



Plate 90. North west elevation of the Edwardian School facing onto Orme Road.



Plate 91. Relationship of Edwardian School with Old Orme Boys' School.



Plate 92. Detail of brick arch doorway above which leads into the entrance to the boiler room.



## Building 3 Ancillary Building Exterior



Plate 93. South west (front) elevation of the ancillary building which was used as cloakroom and washroom.



Plate 94. South west (front) elevation of the ancillary building showing detail of windows and doorways. To the left the Edwardian phase of the ancillary building adjoins the 1970s extension.



Plate 95. South west (front) elevation of the ancillary building and the 1970s extension.