



The Jacobean House, 33 Wardwick, Derby
Heritage Statement for conversion of a Grade II Listed Building*
Part 2 – Catalogue of Plates

Client: 3GP

April 2019

Report No. HS/jacobeanhouse/AH288/08/04/19V1

Prepared by:

Helen Martin-Bacon, MCI(A)



This report has been prepared by Avalon Heritage Ltd with all reasonable skill, care and diligence in accordance with the terms of the contract with the Client. The report is confidential to the Client and Avalon Heritage Ltd accepts no responsibility of whatever kind to third parties to whom this report may be made known. This document has been prepared with the best data made available at the time of the survey. It is not possible to guarantee the accuracy of secondary data provided by another party or source. The report has been prepared in accordance with the standards and guidelines issued by the Chartered Institute for Archaeologists. Copyright of this document is held by Avalon Heritage Ltd and has been prepared for use by the Client for all reasonable use and for the purpose of this project.

Heritage Statement for the Conversion of a Grade II* Listed Building to Residential Use

Site name: The Jacobean House.

Location: 33 Wardwick, Derby City Centre NGR SK 35077 36215

Oasis ref: commerci1- 344129

Report No: HS/jacobeanhse/AH228/08/04/19V1

CATALOGUE OF PLATES

Ground floor and cellars.



Plate 1. Large fireplace with overmantel. Chamfered main ceiling beam and original paneling at the top left of the photograph.



Plate 2. Wall paneling on ground floor looking towards the main front entrance.



Plate 3. View towards the entrance showing modern intervention.



Plate 4. Example of modern additions on the ground floor.



Plate 5. Detail of barrel vaulted cellar.

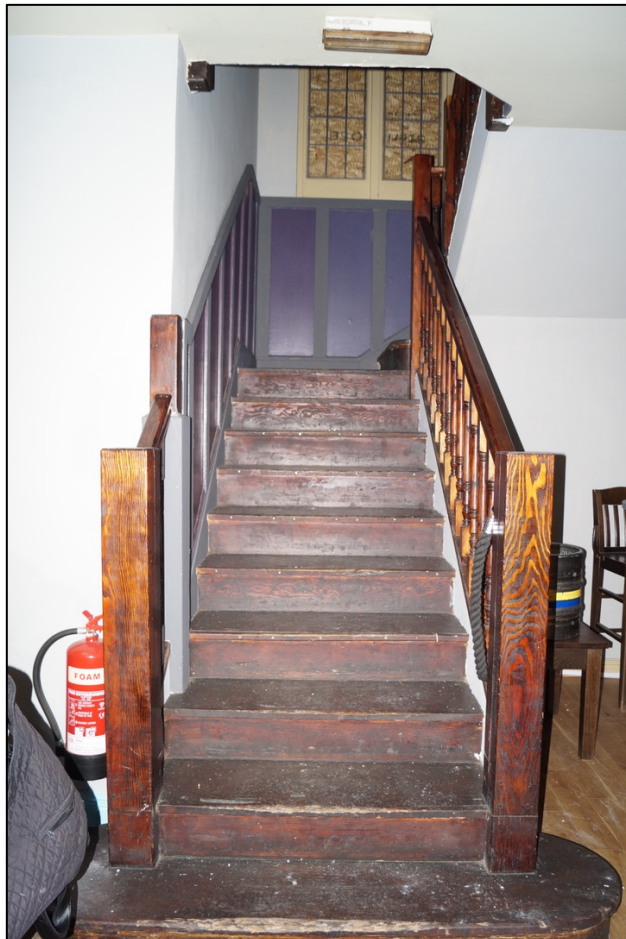


Plate 6. Main staircase between ground and first floor. Balusters are modern but stairs likely to be original.

First Floor



Plate 7. Elaborately decorated fireplace with carved overmantel.



Plate 8. Fireplace with moulded stone surround and mantel.



Plate 9. View showing modern changes to planform on first floor.



Plate 10. View showing modern alterations to original planform on first floor.



Plate 11. Example of decorated arch and paneling on first floor.



Plate 12. Detail of moulded timber arch.

Second Floor



Plate 13. Staircase between first and second floor. Likely original location.



Plate 14. Toilet on second floor.



Plate 15. Modern alterations to room on second floor. Only original purlins remain visible.



Plate 16. Example of modern alterations to second floor.

Third Floor.



Plate 17. Original winder staircase to attic.



Plate 18. Two sides of a cruck-frame in the attic.



Plate 18. Lath and plaster partition wall to rear of chimney breast.



Plate 19. Possible original glazing panes in attic window.

External



Plate 20. Front elevation of the Jacobean House showing characteristic architectural detailing.



Plate 21. Detail of front entrance. The doors are modern.



Plate 22. Elevation fronting Beckett Street. This elevation was rebuilt in 1855 when three gables of the original house were removed to make way for Beckett Street.

HERITAGE SERVICES:

- Constraints reports and heritage risk assessments for land acquisition;
- Heritage Impact Assessments;
- Statements of Significance;
- Setting Assessments;
- Listed Building Appraisals;
- Historic Building Survey and Recording;
- Places of worship;
- Historic agricultural buildings;
- Desk-Based Assessments;
- Historic Landscape Survey;
- Analysis of historic and designed gardens.

ARCHAEOLOGICAL SERVICES:

- Scoping and negotiation with LPAs;
- Preparation of WSIs and mitigation strategies;
- Project Management and set up of archaeological/geophysical surveys;
- Consultancy and advice;
- Co-ordination of fieldwork;
- Procurement.

Avalon Heritage Limited Registered Number 10343218

www.avalonheritage.co.uk

T: 01782 551770

M: 07799 332112

E: info@avalonheritage.co.uk

