



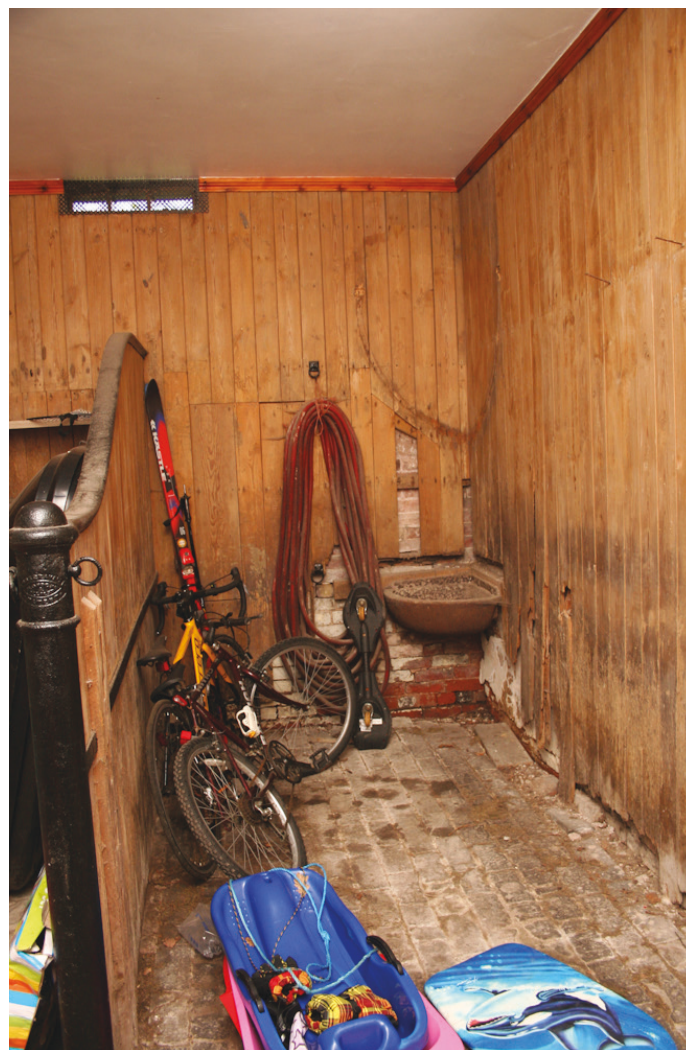
Ground_018 - (above left)

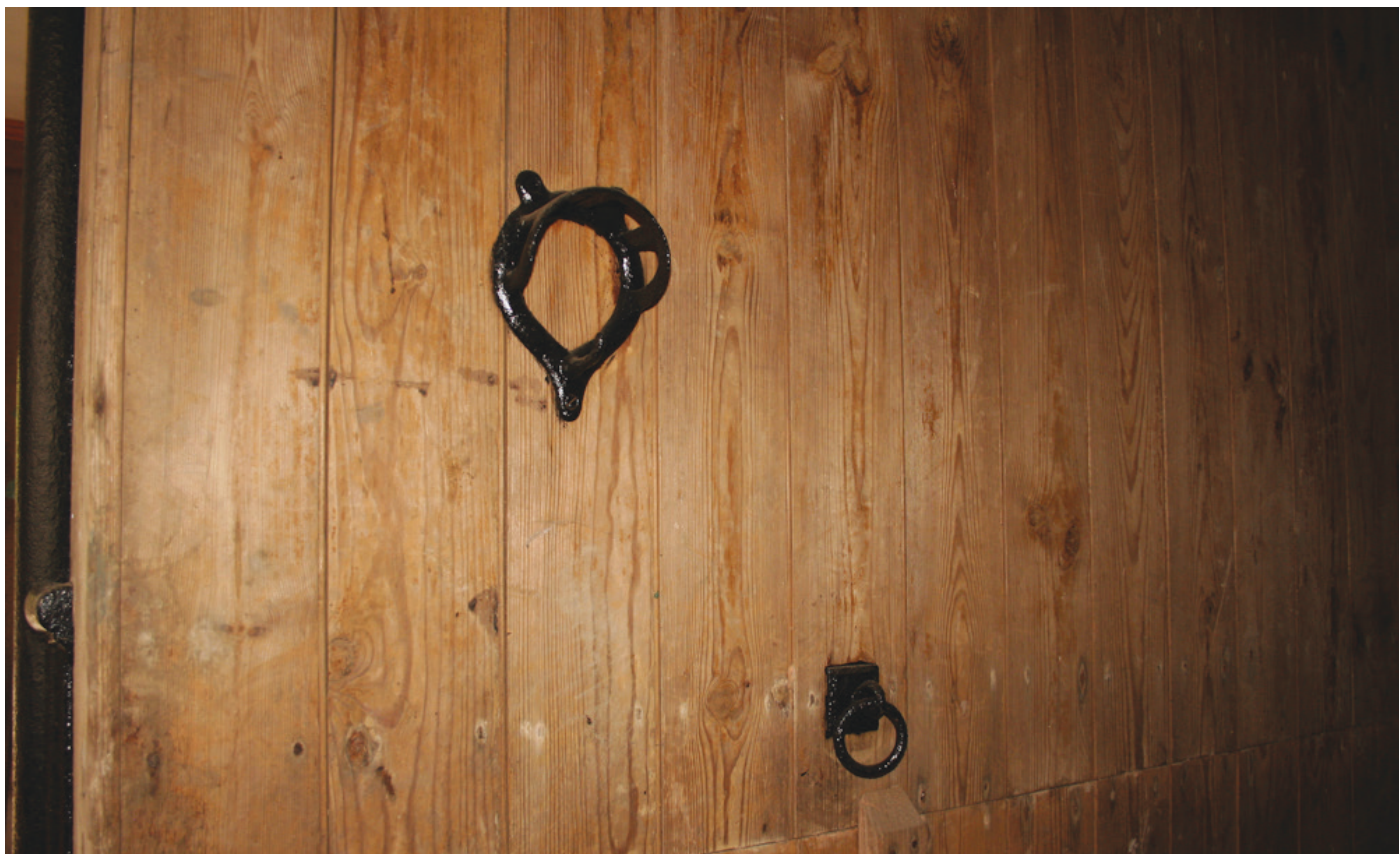
Ground_019 - (above right)

Ground_020 - (below left)

Ground_021 - (below right)

Stable fittings and stalls of c1890 by Musgrave's of Belfast. Musgrave's Patent horse stall fittings with iron 'ramp', iron 'barrier sheath' and cast-iron post with integral tether rings. Musgrave's cast-iron posts in-situ, of c.1890, cast-iron water bowl. The original mangers, probably also by Musgrave's, have all been removed.





Ground_013 - harness bracket and tether ring. Musgraves' fittings. c.1890

Ground_017 - boarded door to the stable on strap hinges with sliding hatch for ventilation (possibly a late C19 replacement of the original 1820s door)

Ground_016 (right) - internal elevation of the same door





First_001 - Hayloft

The two bays over the garage were adapted, the original brick dividing wall removed and replaced with a pair of struts, collar and tie-rod to support the purlins in the 1890s.

First_004 - Hayloft

Original brick dividing wall over the stalls to the eastern bay





First_002
horizontal sliding shutter to hayloft
over garage (late C19 replacement)
in original opening



First_003
horizontal sliding shutter - original
boarded shutter with opening vent

First_005

First bay of eastern hayloft, with brick cross wall, limewashed brickwork, shuttered opening and original roof structure in-situ. Modern chipboard floor





Ground_023 - Harness Room

The Harness Room dates from c1890 and contains a fireplace to provide heating for the groom and stable hands whilst they worked on maintaining the harnesses and tack. The original stove has been replaced.



Ground_024 - Right - red and blue tiled floor of the Harness Room, c.1890



**Ground_025
Harness Room -
courtyard wall**

The Harness or Tack Room was also lined in boarding, with scratch mouldings. Late C19. The earlier window was re-used in this location. Fittings for the harness room were designed to create a dry environment for the tack: harnesses, saddles and bridles, although the fittings have been removed.



First_006

First Floor Accommodation

The plasterwork and fittings appear to date from the late 19th century adaptation of the building.

First_007

Right - fireplace hearth has been removed. This was a later addition when this part of the building was made into habitable accommodation



First_008

Left - Gothic tracery window, dating from circa 1823-27 relocated into the first floor accommodation. The original window incorporates round saddle bars, but has lost its original leaded-lights.



Ground_027 - Bothy Interior

Above left - stone masonry wall, at low level to the internal cross wall, with six courses and large blocks of regular tooled pink ashlar, probably the remnants of an earlier building, with later blue brick floor.

Ground_028 - Above right - the only original iron manger left within the complex is contained within the stable to the Bothy and a cast-iron water bowl or mash bowl, both by Musgrave's, ca. 1890

Exterior_013 - Left - junction of The Bothy and the Stables - the gap was infilled by 1874 and had a ground level doorway (later infilled), which would have provided a through-route to the outer stable yard and a first floor hay loft or window.





Ground_029 - Western Stableblock (Ground Floor)

Late 19th century Laundry Room, converted from a pair of stables (four stalls). The internal dividing brick wall was removed at ground floor level and replaced with an oak beam and cast-iron post, supporting the loadbearing brick wall above and the joists.



Ground_030 - The chimney breast and hearth was inserted, not keyed into the masonry, and has largely collapsed, leaving just the flue with the 'copper' and small heated chamber below.



Ground_031 - Western Stableblock (Ground Floor)

Cast-iron copper, brick fire box with cast-iron door and stone thrall (damaged), clay tiles, inserted early C20

Ground_032 - internal view of collapsed flue and withies, and brickwork bearing onto inserted floor joist





Ground_033 - Western Stableblock (Ground Floor)

hatch for dropping hay down to horses in former stables, lath and lime plaster ceiling. Original feed hatches and plastered ceilings for the stables were retained in-situ in each corner of this block

Ground_034

Stone sink from C19 laundry



Ground_035

Blue-clay paved floor

