



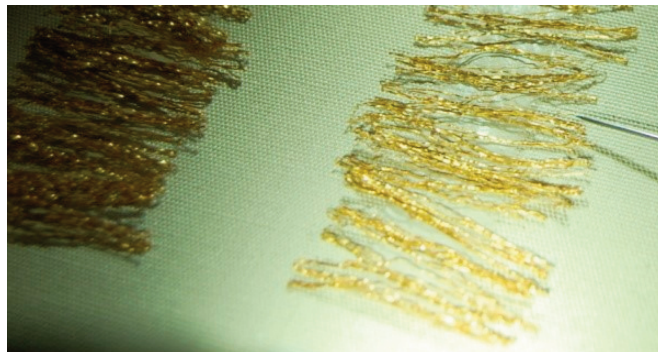
Data Fig 23 Taplow gold braids and reconstructions woven by E Crowfoot after pattern determination (© The Trustees of the British Museum [1883,1214.17]. Shared under a Creative Commons Attribution-NonCommercial-ShareAlike 4.0 International (CC BY-NC-SA 4.0) licence)



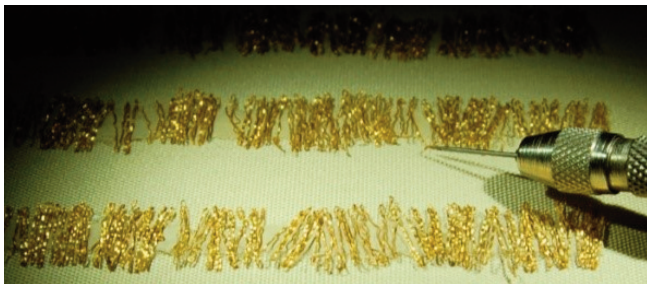
Data Fig 24 Detail of Taplow gold braid with textile fibres showing remnants of pattern (© The Trustees of the British Museum [1883,1214.17]. Shared under a Creative Commons Attribution-NonCommercial-ShareAlike 4.0 International (CC BY-NC-SA 4.0) licence)



<A> wide braid (SLN)



 wide braid (MH)

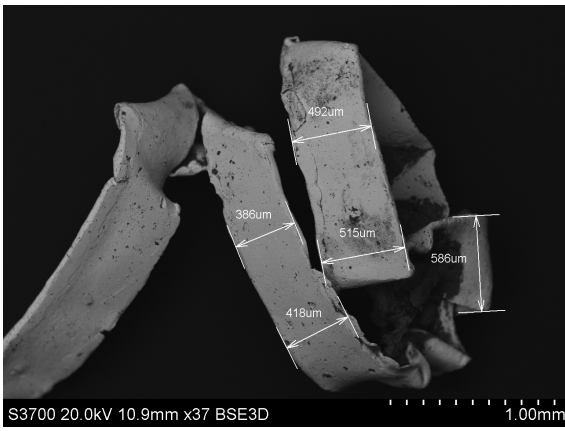


<C> narrow braid (MH)

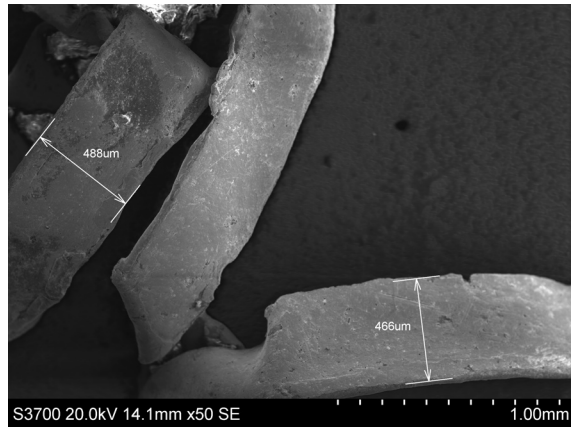


<D> second smallest triangle (MH)

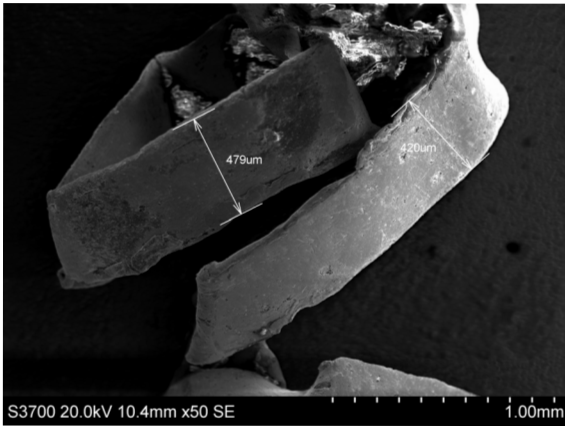
Data Fig 25 Taplow gold braid sampling sites selected by Susan La Niece (SLN) and Marei Hacke (MH)



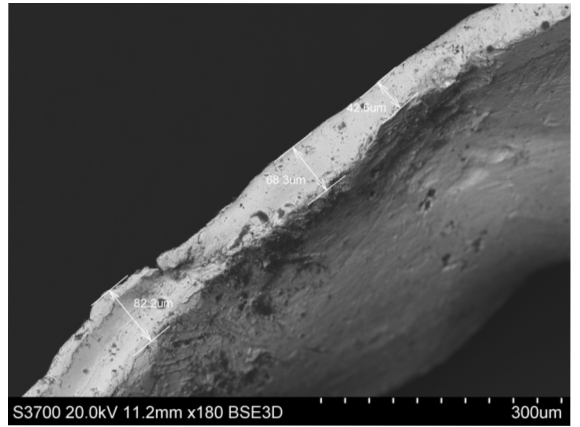
EX-PRO 03 (166) <26> width (492µm, 515µm)



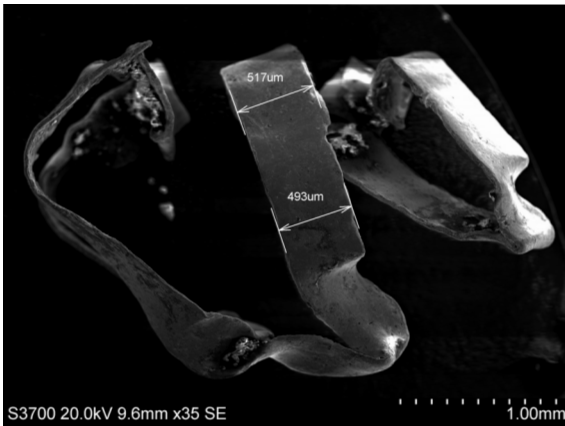
EX-PRO 03 (166) <26> width (488µm, 466µm)



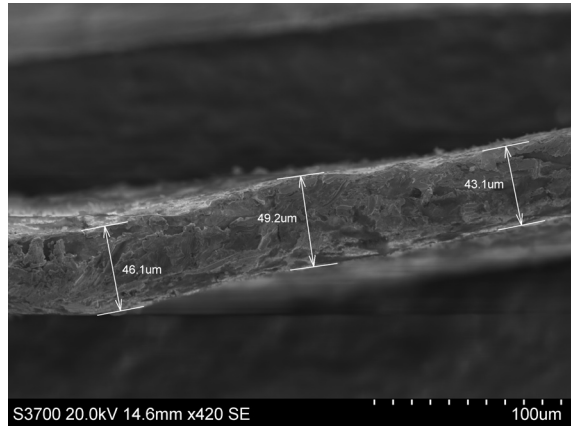
EX-PRO 03 (166) <26> width (479µm)



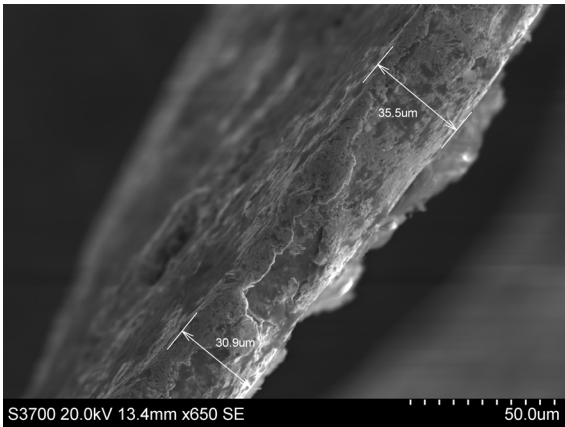
EX-PRO 03 (166) <26> thickness (43µm, 68µm)



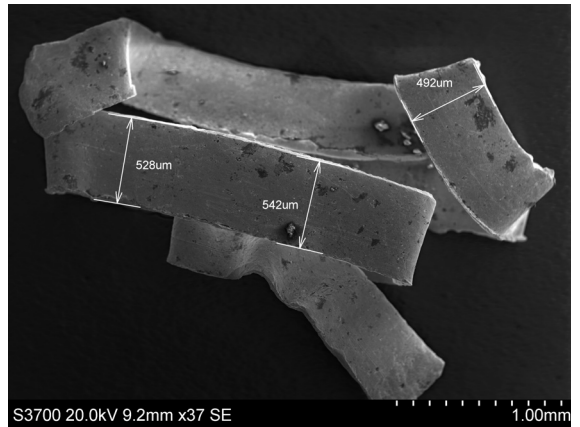
EX-PRO 03 (167/168) <27> width (517µm, 493µm)



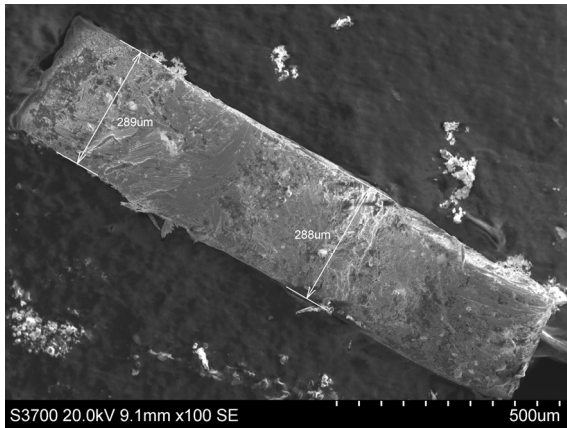
EX-PRO 03 (167/168) <27> thickness (46µm, 50µm, 43µm)



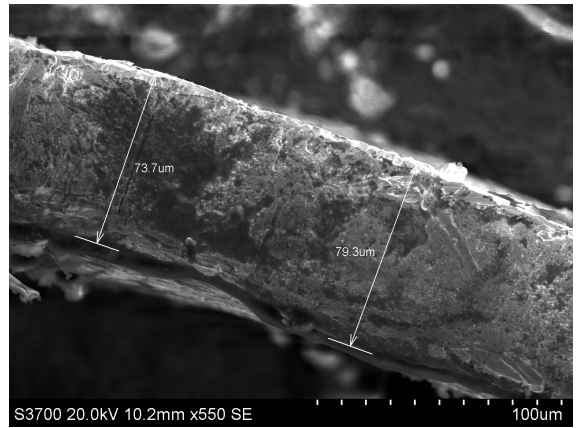
EX-PRO 03 (167/168) <27> thickness (31µm, 36µm)



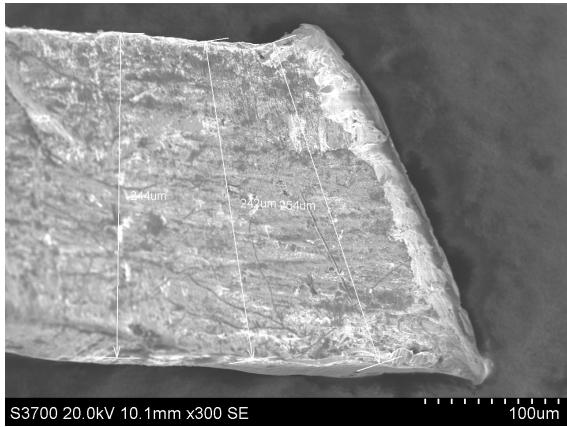
EX-PRO 03 (168) <28> width (528µm, 542µm, 492µm)



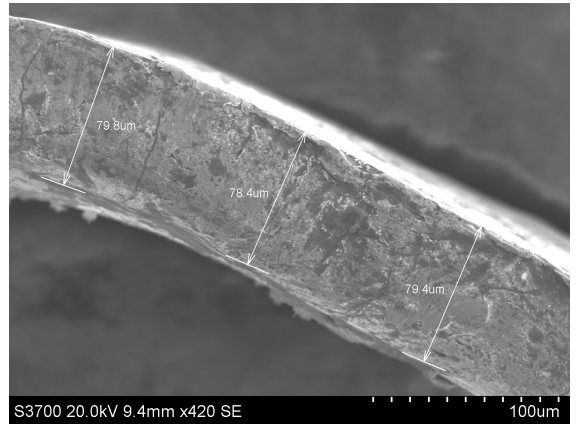
Taplow wide braid <1> width (289µm, 288µm)



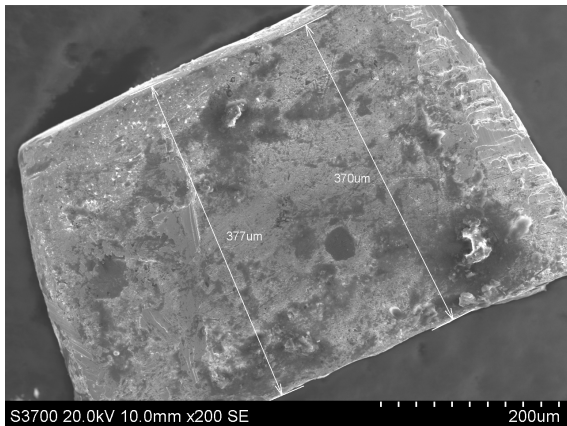
Taplow wide braid <1> thickness (74µm, 79µm)



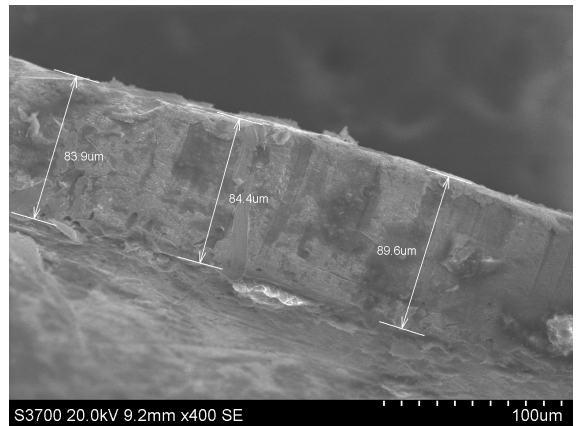
Taplow wide braid <2> width (244µm, 242µm, 254µm)



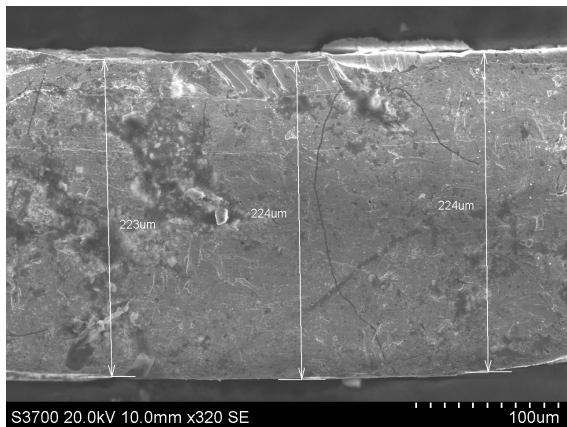
Taplow wide braid <2> thickness (80µm, 78µm, 79µm)



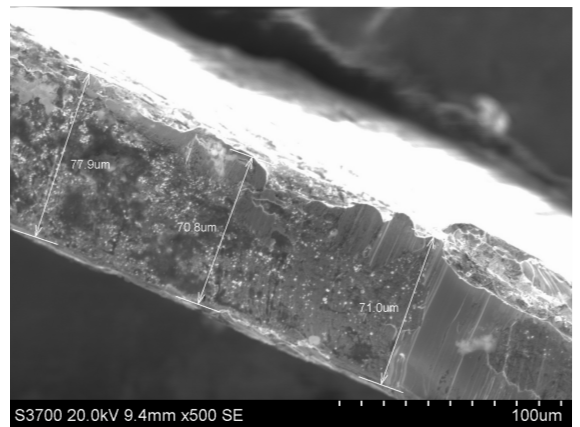
Taplow narrow braid <3> width (377µm, 370µm)



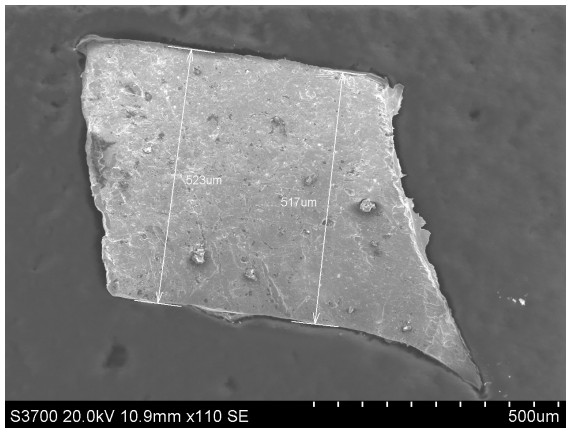
Taplow narrow braid <3> thickness (84µm, 84µm, 87µm)



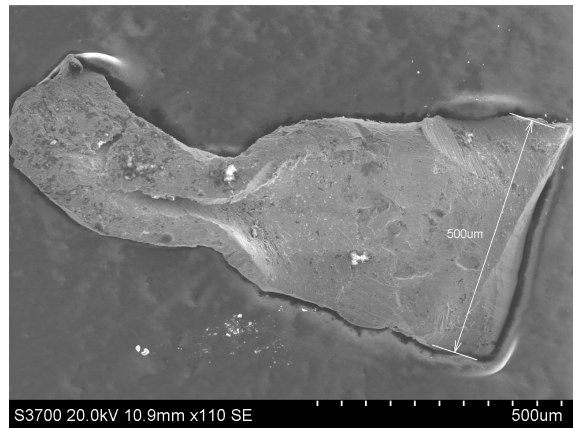
Taplow triangle <4> width (223µm, 224µm, 224µm)



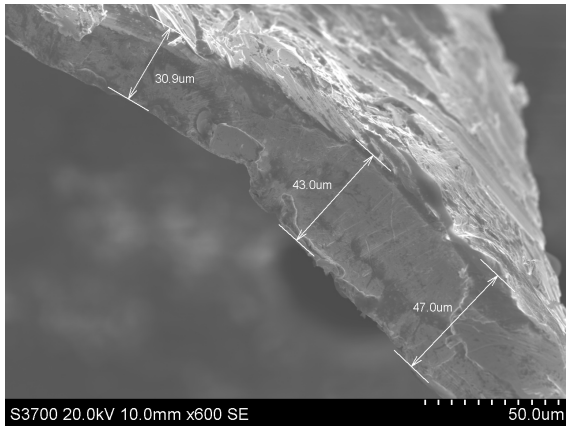
Taplow triangle <4> thickness (78µm, 71µm, 71µm)



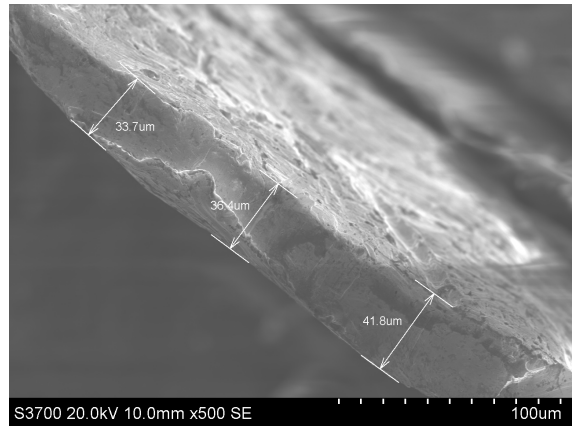
Favershams gold strip width (523µm, 517µm)



Favershams gold strip width (500µm)

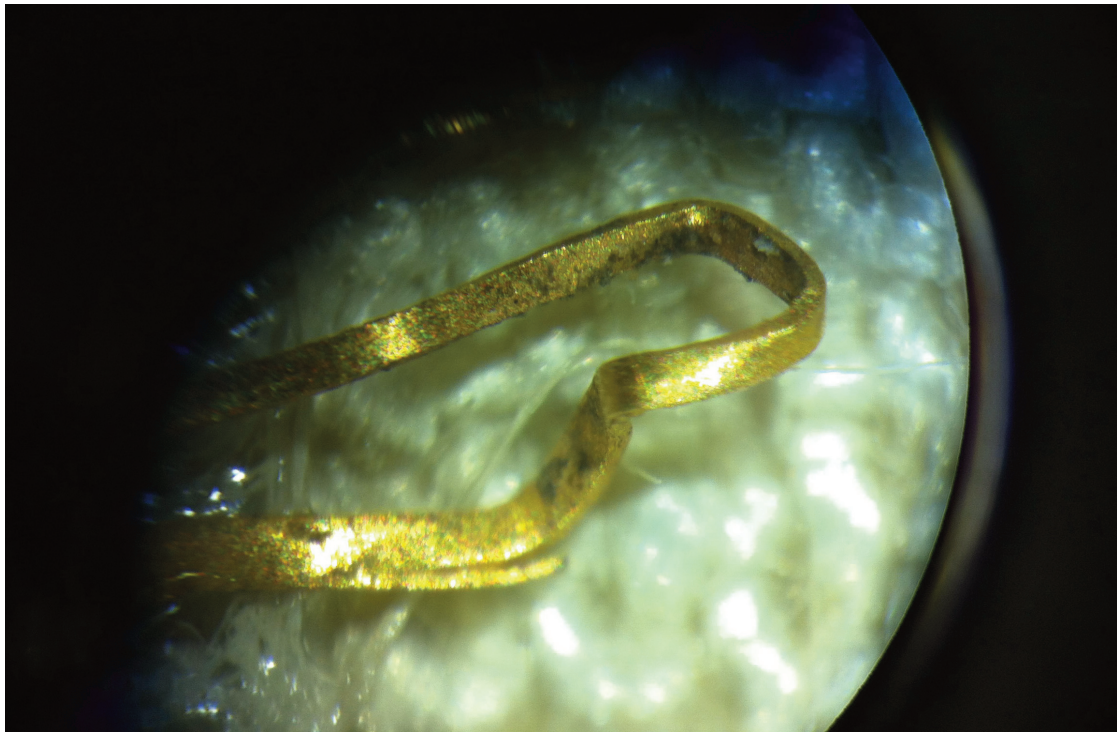


Favershams gold strip thickness (31µm, 43µm, 47µm)

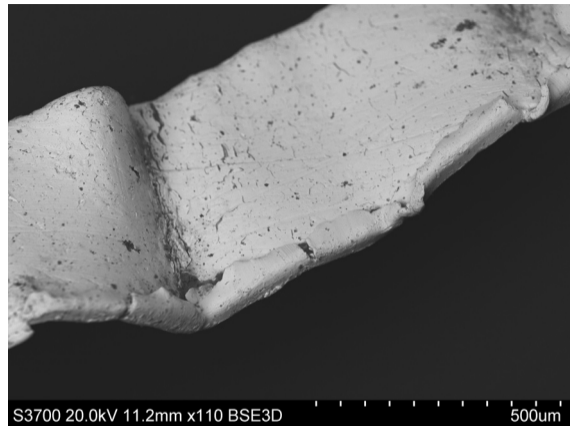
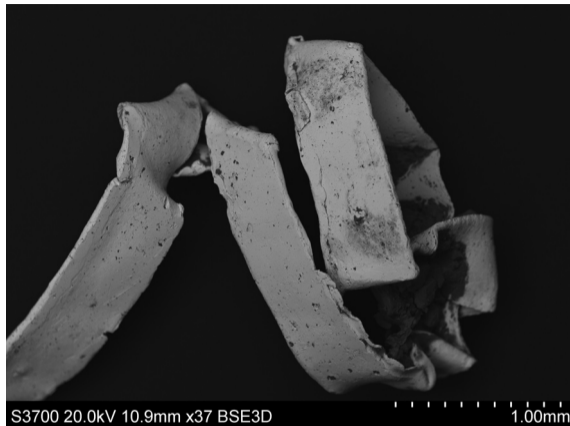


Favershams gold strip thickness (34µm, 36µm, 42µm)

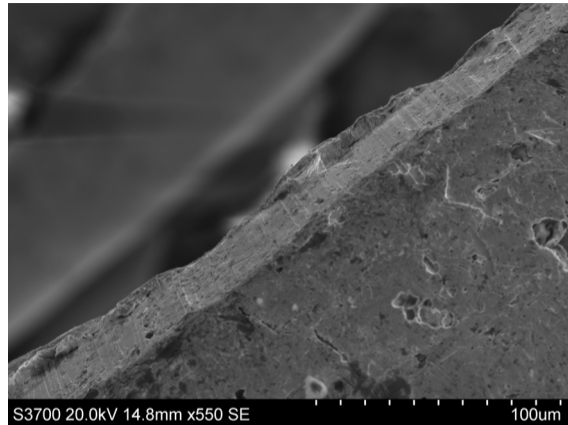
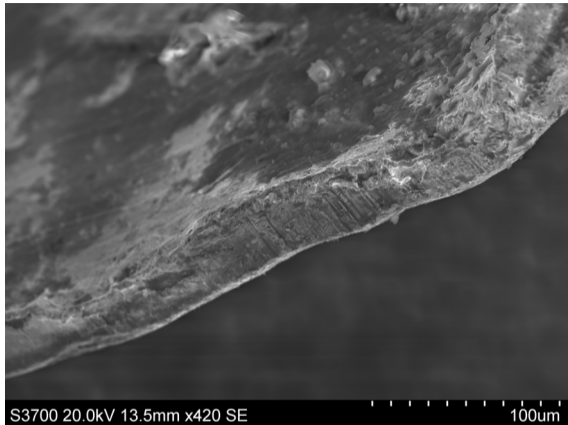
Data Fig 28 Dimensions of Favershams gold strips



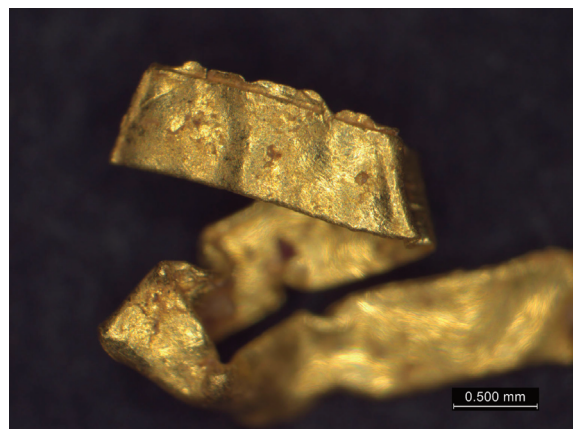
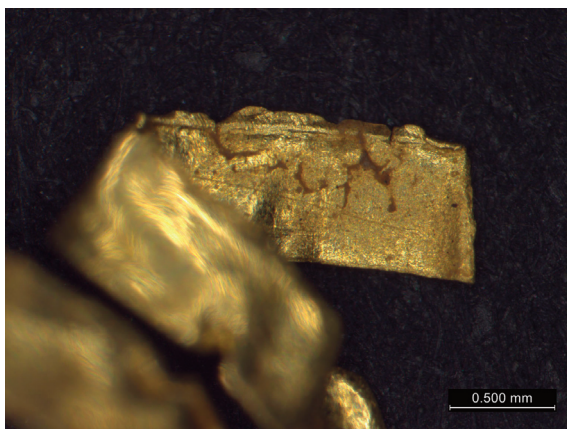
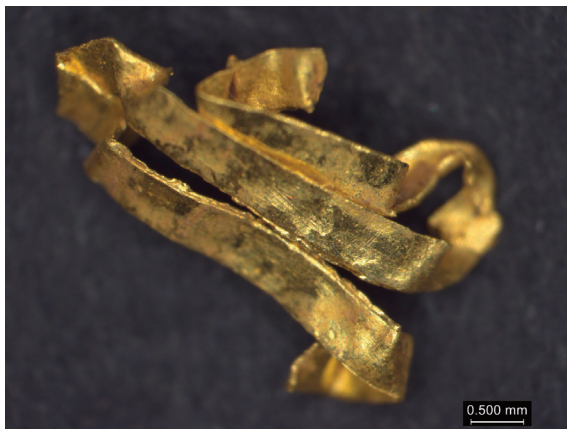
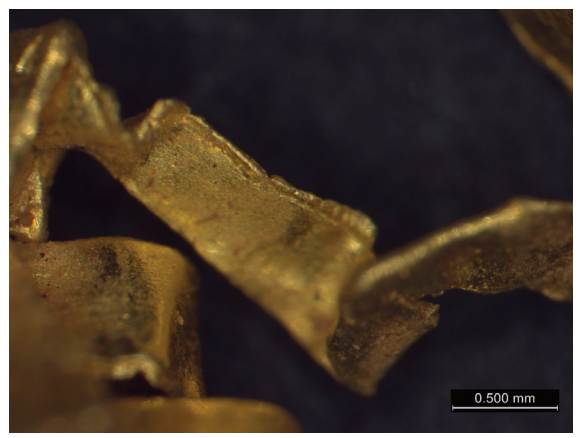
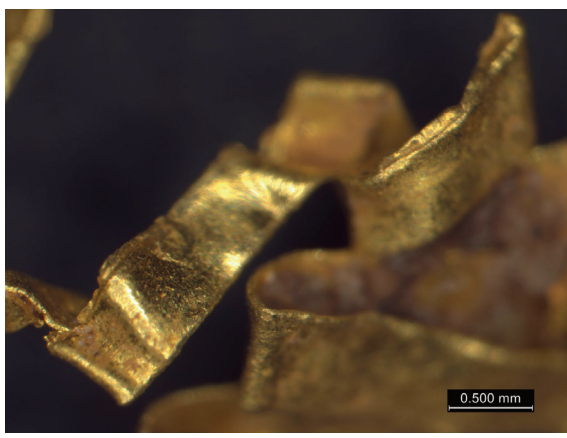
Data Fig 29 Example of cutting mistake along the edge of a gold strip in the Taplow wide braid



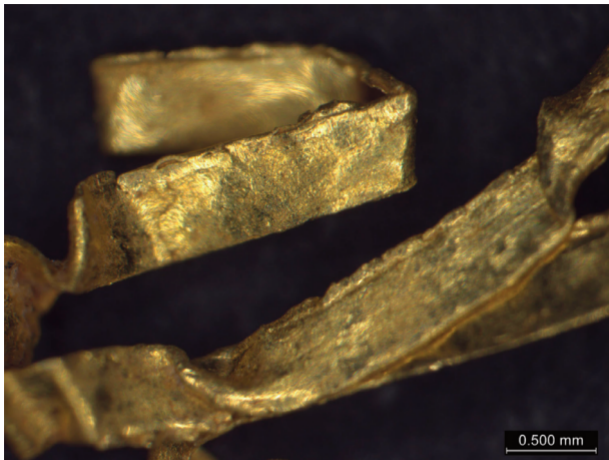
Data Fig 30 SEM images of gold braid <S19>, {26}, showing lips on gold strip edges



Data Fig 31 SEM images of gold braid <S19>, {27} (left) and {28} (right), showing cutting lines perpendicular to gold strip edges



Data Fig 32 Examples of indentations along edges of fragments of gold strip from gold braid <S19>, {26} (left and right images show the same fragments from the inside and outside)



Data Fig 33 Example of indentation running parallel to edge of gold strip from $\langle S19 \rangle$, $\{26\}$