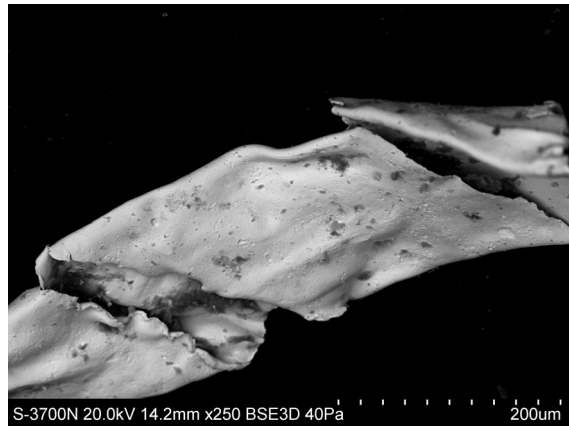
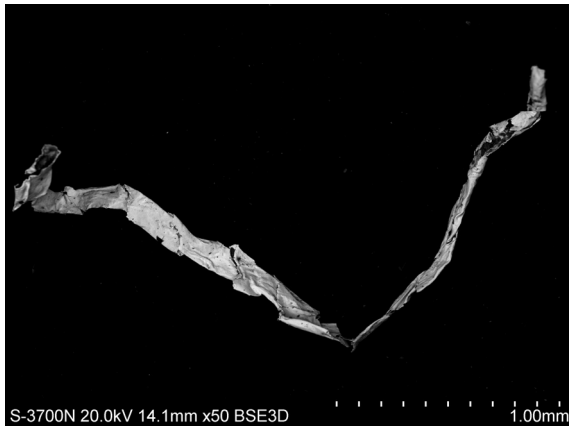




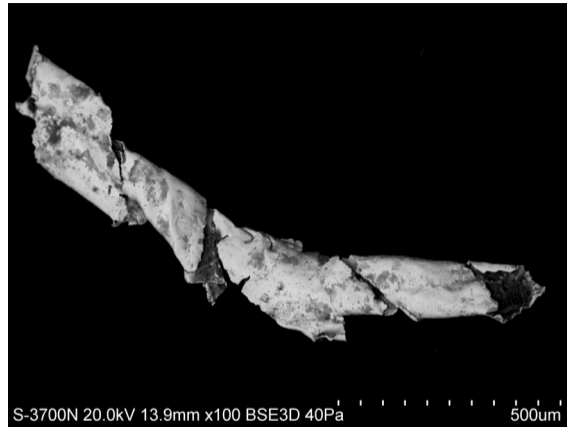
Data Fig 34 Spun gold thread fragment <191>b cut in half (left) and one half of <191>b further cut in half with fine scissors (right) (photos A Mongiatti) (scale graduation 1mm)



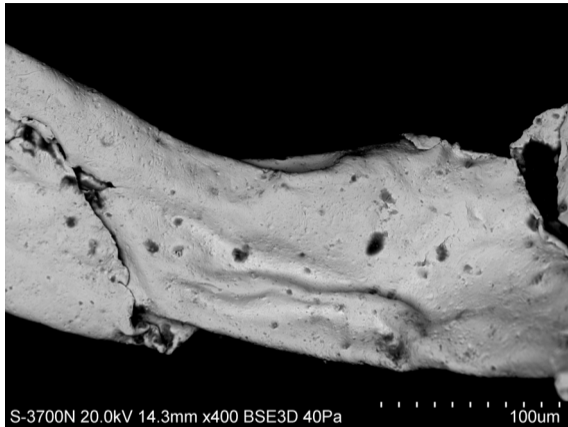
Data Fig 35 SEM images of gold thread fragments <191>a (left) and <191>e (right), showing thinness of strip, tight spinning of thread and overlapping of gold strip, damage on strip and flattened areas (lower end of fragment <191>a, left) (images A Mongiatti) (W of view *c* 4mm (left), *c* 1.5mm (right))



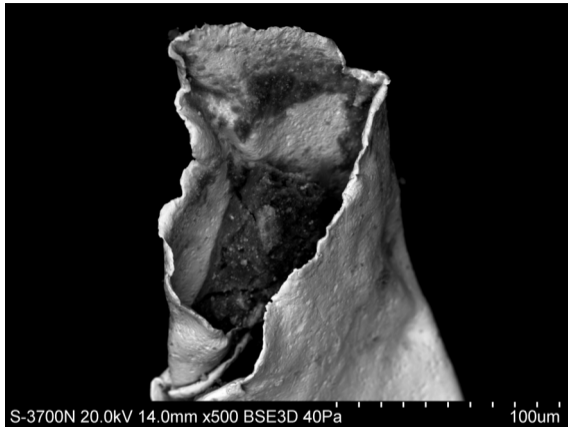
Data Fig 36 SEM images of gold thread fragments <191>b (left) and <191>c (right); note how flattened fragment (b) is and the slightly distorted and flattened z-twist of the gold strip on fragment (c) (images A Mongiatti) (W of view c 2.5mm (left), c 0.5mm (right))



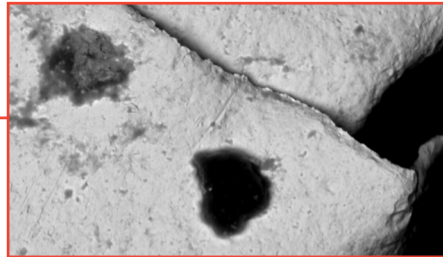
Data Fig 37 SEM images of gold thread fragments <191>d (left) and <191>f (right) (images A Mongiatti) (W of view c 2mm (left), c 1.5mm (right))



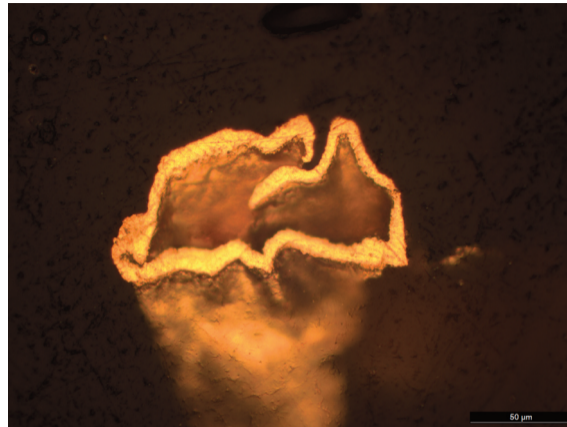
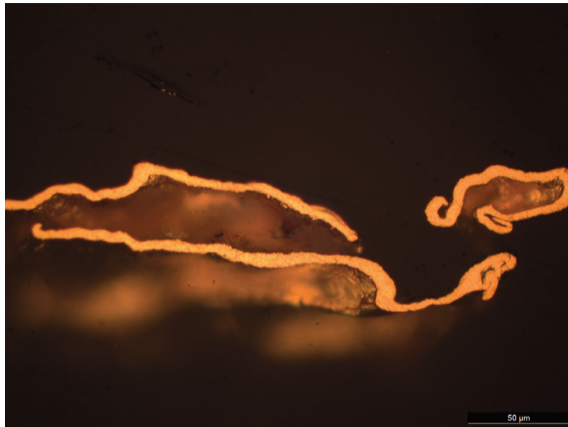
Data Fig 38 SEM images of gold thread fragments <191>b (left) and <191>d (right) (images A Mongiatti) (W of view c 0.3mm (left), c 0.4mm (right))



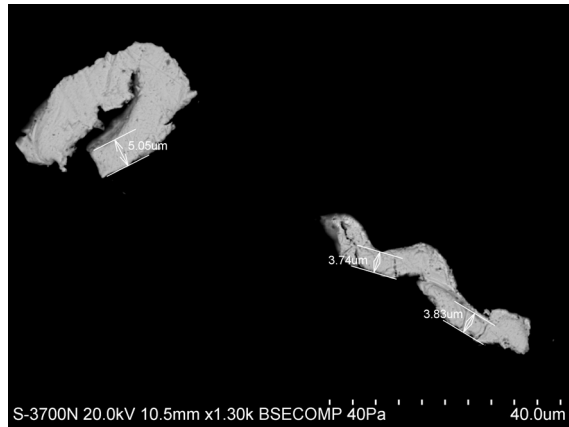
Data Fig 39 SEM images of gold thread fragments <191>b (left) and <191>f (right); note natural curling of strip along edge (images A Mongiatti) (W of view c 0.25mm (left), c 0.4mm (right))



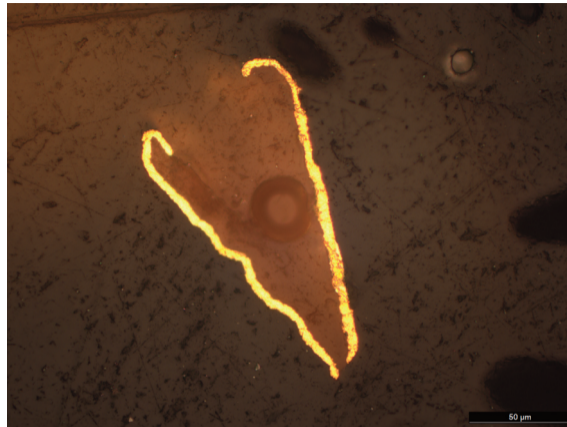
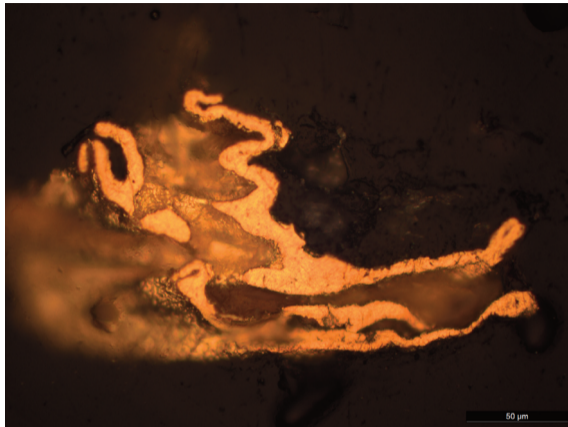
Data Fig 40 SEM images of gold thread fragment <191>e showing cutting-tool marks on edge of gold producing very thin edge (images A Mongiatti) (W of view c 0.35mm (left), c 0.1mm (right))



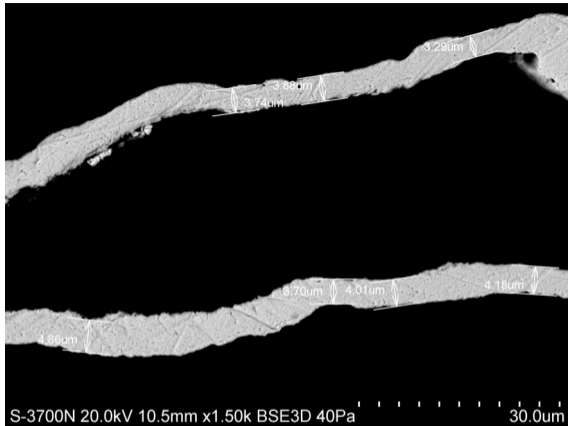
Data Fig 41 Optical images of polished cross-sections of gold thread fragments <191>b taken with a Zeiss inverted light microscope (images A Mongiatti) (x500; scale bar 50μm)



Data Fig 42 SEM images of polished cross-sections of gold thread fragments <191>b, showing how edges of strip have curled and are thinner than core (images A Mongiatti) (W of view c 80 μ m (left), c 100 μ m (right))



Data Fig 43 Optical images of further polished cross-sections of gold thread fragments <191>b taken with a Zeiss inverted light microscope (images A Mongiatti) (x500; scale bar 50µm)



Data Fig 44 SEM images of further polished cross-sections of gold thread fragments <191>b (images A Mongiatti) (W of view c 80 μm (left), c 175 μm (right))