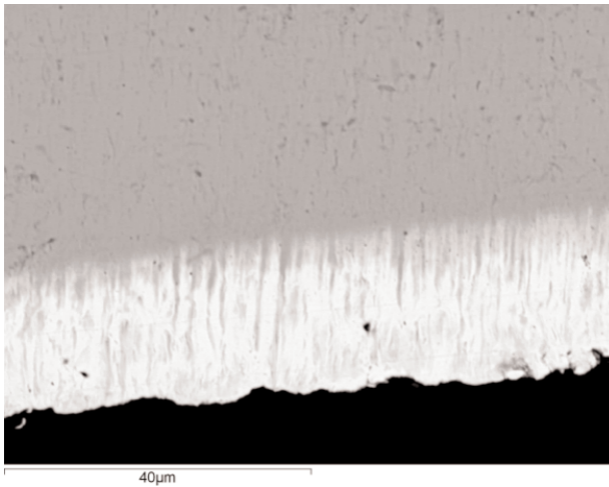
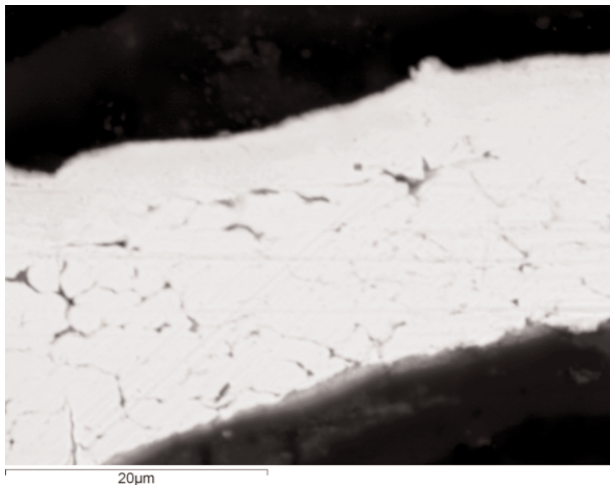


Data Fig 45 BSE micrograph of enamel from external basal disc of hanging bowl <S30>, showing the cuprite dendrites (dark) in the glassy matrix (scale bar 20µm)



Data Fig 46 BSE image of the gold surface (bright layer) and silver substrate (grey layer) of the gilded rim from cup <S43>; the diffusion of the silver substrate into the applied gold layer is shown by the grey phase extending into the surface layer (scale bar 40µm)



Data Fig 47 BSE image of cross-section through gold strip $\langle 170 \rangle_c$ from lyre $\langle S58 \rangle$; note the granular microstructure of the surface layer (scale bar $20\mu\text{m}$)