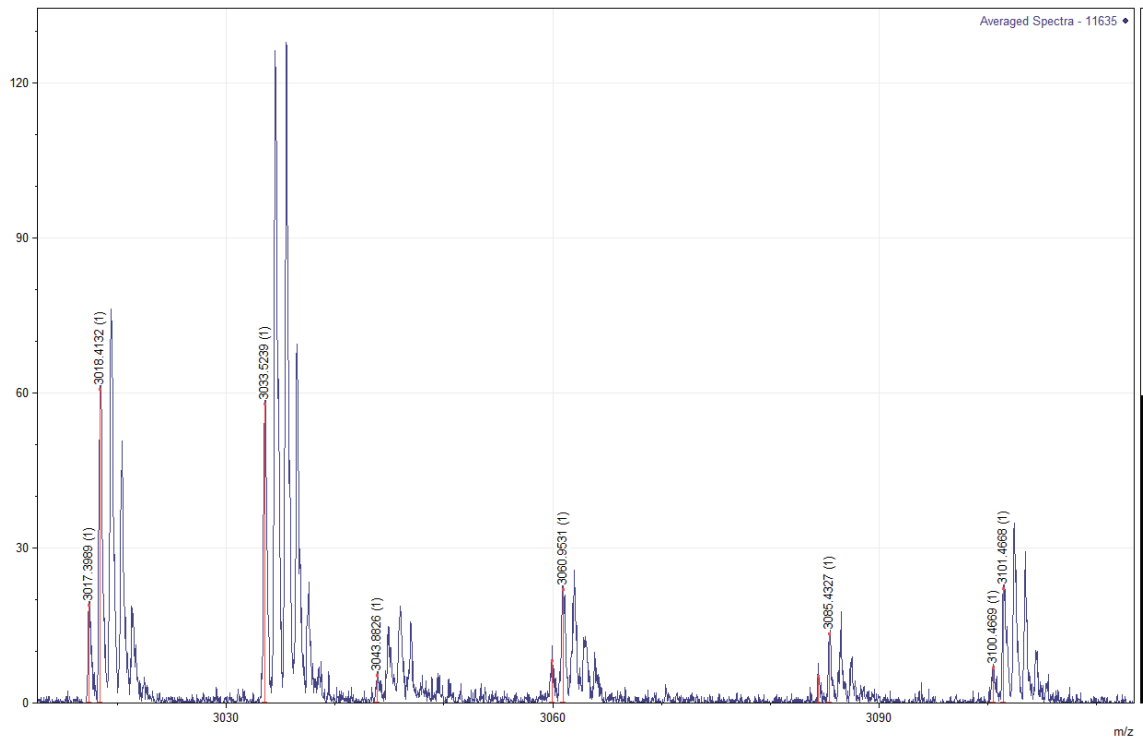
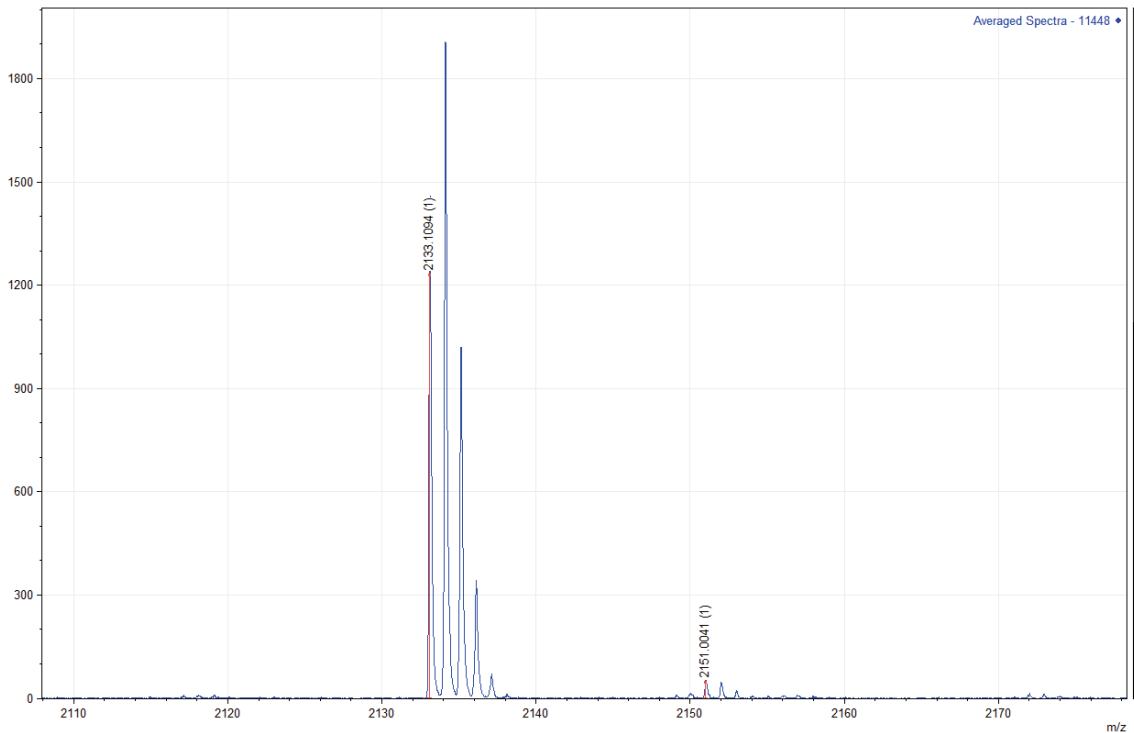


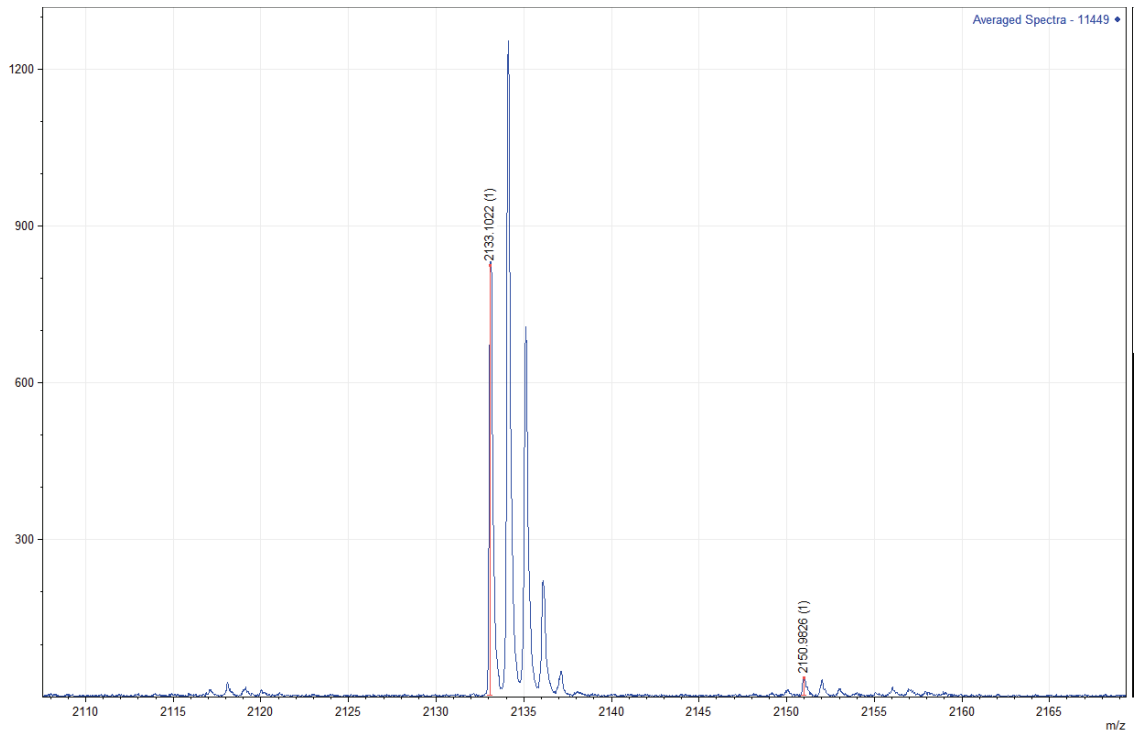
Data Fig 53 Spectra for ZooMS sample 11661 showing peaks consistent with domestic cattle, bison and yak (key mass = 1208)



Data Fig 54 Spectra for ZooMS sample 11635 showing relevant deer peaks



Data Fig 55 Spectra for ZooMS sample 11448 showing peaks consistent with known sperm whale peaks (key mass = 2133)



**Data Fig 56** Spectra for ZooMS sample 11449 showing peaks consistent with known sperm whale peaks (key mass = 2133)