

Worcestershire Archaeology Research Report No.12

Historic Building Non-technical Record Report

THE FORMER WORCESTER ROYAL INFIRMARY, CASTLE STREET, WORCESTER



Karl Hulka, CgMs Ltd

Worcestershire Archaeology Research Report no 12

Historic Building Non-technical Record Report

The Former Worcester Royal Infirmary, Castle Street, Worcester

(WCM 101621)

Part 2: Plates

Karl Hulka

Research by Karl Hulka and Luke Dennison

2018

Worcestershire Archaeology Research Report no 12

Historic Building Non-technical Record Report

The Former Worcester Royal Infirmary,
Castle Street, Worcester

Published by Worcestershire Archaeology
Archive & Archaeology Service,
The Hive, Sawmill Walk,
The Butts, Worcester.
WR1 3PD

ISBN 978-1-9998288-4-4

© Worcestershire County Council 2018

Worcestershire, County Council
County Hall, Spetchley Road, Worcester.
WR5 2NP

This document is presented in a format for digital use.
High-resolution versions may be obtained from the publisher.

worcestershirearchaeology@worcestershire.gov.uk

Front cover illustration: Worcester Royal Infirmary, building 24, eastern elevation

PLATES LIST

Plate 1:	Aerial view of hospital site (2006)
Plate 1.1:	Building 1 – northern and western elevations
Plate 1.2:	Building 1 – western elevation
Plate 1.3:	Building 1 – southern elevation
Plate 1.4:	Building 1 – eastern elevation against Building 4
Plate 1.5:	Building 1 – interior, view to the southwest
Plate 1.6:	Building 1 – detail of pad stone for metal roof truss
Plate 1.7:	Building 1 – detail of switches
—————	—————
Plate 2.1:	Building 2 – southern and western elevations
Plate 2.2:	Building 2 – western elevation
Plate 2.3:	Building 2 – eastern elevation
Plate 2.4:	Building 2 – interior of southern part, view to the south west
Plate 2.5:	Building 2 – detail of window handle
Plate 2.6:	Building 2 – detail of roof bracket
Plate 2.7:	Building 2 – detail of coat hook by entrance
Plate 3.1:	Building 3 – southern and eastern elevation (taken from B.27b)
—————	—————
Plate 3.2:	Building 3 – northern and eastern elevation
Plate 3.3:	Building 3 – western elevation
Plate 3.4:	Building 3 – detail of typical window
Plate 3.5:	Building 3 – typical interior, view to the north
Plate 3.6:	Building 3 – detail of internal roof structure, view to the northeast
Plate 3.7:	Building 3 – detail of internal door
Plate 3.8:	Building 3 – detail of typical die-cast window handle
Plate 4.1:	Building 4 – southern and eastern elevations
—————	—————
Plate 4.2:	Building 4 – southern and western elevations
Plate 4.3:	Building 4 – interior of western part
Plate 5.1:	Building 5 – eastern and northern elevations (taken from B.6)
—————	—————
Plate 5.2:	Building 5 – western elevation
Plate 5.3:	Building 5 – eastern elevation
Plate 5.4:	Building 5 – northern elevation during demolition
Plate 5.5:	Building 5 – interior of lavatory, view to the southeast

Plate 5.6:	Building 5 – interior of washroom, view to the east
Plate 6.1:	Building 6 – eastern elevation
Plate 6.2:	Building 6 – northern elevation
Plate 6.3:	Building 6 – western elevation
Plate 6.4:	Building 6 – southern elevation
Plate 6.5:	Building 6 – external store
Plate 6.6:	Building 6 – detail of typical window
Plate 6.7:	Building 6 – detail of emergency electricity isolation switch
Plate 6.8:	Building 6 – interior of southern extension, view to the east
Plate 6.9:	Building 6 – interior of former southernmost workshop, view to the southeast
Plate 6.10:	Building 6 – interior of former southernmost workshop, view to the southwest
Plate 6.11:	Building 6 – interior of former central workshop, view to the southwest
Plate 6.12:	Building 6 – interior of former central workshop, view to the northeast
Plate 6.13:	Building 6 – detail of 1950 ‘Vent-Axia’ fan, former central workshop
Plate 6.14:	Building 6 – interior of northernmost workshop showing blocked central door, view to the north
Plate 6.15:	Building 6 – detail of 1950s ‘Univectair’ heater unit, northern workshop
Plate 6.16:	Building 6 – detail of makers plate on heater unit, northern workshop
Plate 6.17:	Building 6 – roof trusses over former southernmost workshop, view to the southeast
Plate 6.18:	Building 6 – detail showing original metal purlins (right) and later purlins over central and northern workshops, view to the east
Plate 6.19:	Building 6 – detail of wall between former southern workshop and remainder of building showing former bowed roof, view to the southeast
Plate 7.1:	Building 7 – eastern elevation
Plate 7.2:	Building 7 – northern elevation
Plate 7.3:	Building 7 – western elevation
Plate 7.4:	Building 7 – southern elevation showing generator room
Plate 7.5:	Building 7 – interior of southern lab showing air con unit, view to the east
Plate 7.6:	Building 7 – interior of typical room showing plastic ducting, view to the east

Plate 7.7:	Building 7 – plant room on roof, view to the east
Plate 7.8:	Building 7 – interior of generator room, view to the northeast
Plate 7.9:	Building 7 – detail of amp meter in generator room
_____	_____
Plate 8.1:	Building 8 – view to the north following the demolition of Building 7
_____	_____
Plate 9.1:	Building 9 – southern and eastern elevations
Plate 9.2:	Building 9 – interior showing mains riser, view to the west
_____	_____
Plate 10.1:	Building 10 – east side, view to the northwest
Plate 10.2:	Building 10 – southern end of the eastern elevation, view to the east
Plate 10.3:	Building 10 – northern end of the east elevation, view to the south
Plate 10.4:	Building 10 – northern and eastern elevations, view to the southwest
Plate 10.5:	Building 10 – northern elevation
Plate 10.6:	Building 10 – western elevation
Plate 10.7:	Building 10 – western elevation following the demolition of Building 7
Plate 10.8:	Building 10 – west side of southern elevation
Plate 10.9:	Building 10 – east side of (upper) southern elevation
Plate 10.10:	Building 10 – east side of (lower) southern elevation
Plate 10.11:	Building 10 – southern elevation following demolition of Building 25
Plate 10.12:	Building 10 – ancillary store and steps to elevated water tank to the southeast of main building, view to the southeast
Plate 10.13:	Building 10 – interior of main shed, view to the south
Plate 10.14:	Building 10 – coal bins along the southern wall, view to the west
Plate 10.15:	Building 10 – northeast entrance to main shed showing partitioned workshop/ stores, view to the east
Plate 10.16:	Building 10 – detail of roof trusses
Plate 10.17:	Building 10 – detail of high level window in main shed, view to the west
Plate 10.18:	Building 10 – interior of northern range, view to the northeast
Plate 10.19:	Building 10 – interior of workshop in eastern range, view to the north
Plate 10.20:	Building 10 – interior of mess room in eastern range, view to the south
Plate 10.21:	Building 10 – detail of window handle in eastern range, view to the north
_____	_____
Plate 11.1:	Building 11 and 12 – view to the southeast showing structures in relation to Building 18 (far left), Building 26 (behind) and Building 10 (far right)

Plate 11.2:	Building 11 – north and west elevations
Plate 11.3:	Building 11 – north and east elevations
Plate 11.4:	Building 11 – interior showing water softener, view to the east
—————	—————
Plate 12.1:	Building 12 – south elevation following the partial demolition of the single storey range
Plate 12.2:	Building 12 – south and west elevation
Plate 12.3:	Building 12 – interior showing ladder to water tank, view to the south
—————	—————
Plate 13.1:	Building 13 – view east along the western access road showing the northern and western elevations
Plate 13.2:	Building 13 – principal entrance on the northern elevation, view to the east
Plate 13.3:	Building 13 – basement door in western elevation, view to the east
Plate 13.4:	Building 13 – southern elevation showing earlier wall at base, view to the north
Plate 13.5:	Building 13 – interior of basement, view to the west
Plate 13.6:	Building 13 – interior of westernmost ground floor room, view to the west
Plate 13.7:	Building 13 – interior of eastern ground floor room showing later partition, view to the west
Plate 13.8:	Building 13 – detail of window handle in eastern room, view to the northwest
Plate 13.9:	Building 13 – interior of ground floor showing connecting door to Building 14, view to the east
—————	—————
Plate 14.1:	Building 14 – northern and eastern elevations
Plate 14.2:	Building 14 – northern elevation (western end)
Plate 14.3:	Building 14 – detail of typical original window, view to the south
Plate 14.4:	Building 14 – eastern side of central gabled projection showing blocked door, view to the west
Plate 14.5:	Building 14 – detail of rebate and drip moulding in central gable, view to the southwest
Plate 14.6:	Building 14 – eastern wing showing modified windows, view to the southeast
Plate 14.7:	Building 14 – eastern elevation above the roof of Building 15a
Plate 14.8:	Building 14 – western elevation following demolition of Building 13

Plate 14.9:	Building 14 – southern elevation showing proximity of Building 15 (partly demolished), view to the northeast
Plate 14.10:	Building 14 – entrance corridor from Building 13, view to the northeast
Plate 14.11:	Building 14 – female WC, view to the east
Plate 14.12:	Building 14 – western seminar room, view to the northwest
Plate 14.13:	Building 14 – west wing showing empty fireplace (right) and original door (left), view to the southeast
Plate 14.14:	Building 14 – detail of original doorway in partition between west wing and central range, view to the northeast
Plate 14.15:	Building 14 – central seminar room showing interior of gabled projection, view to the north
Plate 14.16:	Building 14 – two inserted doorways in south elevation looking through to Building 15, view to the southeast
Plate 14.17:	Building 14 – detail of metal framed pivoting window in north elevation, view to the north
Plate 14.18:	Building 14 – detail of metal framed casement in south elevation, view to the southeast
Plate 14.19:	Building 14 – detail showing timber framed window in southern elevation, view to the southwest
Plate 14.20:	Building 14 – interior of room in east wing showing tiled floor, view to the north
Plate 14.21:	Building 14 – interior of easternmost room, view to the north
Plate 14.22:	Building 14 – interior of eastern wall showing inserted doorway, view to the southeast
Plate 14.23:	Building 14 – detail of original ceiling boarding, view up
Plate 14.24:	Building 14 – detail of historic roof light, view up
Plate 14.25:	Building 14 – detail demonstrating difference between original and later roof lights, view to the southeast
—————	—————
Plate 15.1:	Building 15 – roof and south elevation against rear of Building 14
Plate 15.2:	Building 15 (left) and 15a (right) – flat roofs, view to the south
Plate 15.3:	Building 15 – interior of north-south section showing doors to western access road, view to the northwest
Plate 15.4:	Building 15 – interior of north-south section showing doors to kitchens (B.24c), view to the northeast
Plate 15.5:	Building 15 – interior of east-west section, view to the west
Plate 15.6:	Building 15a – northern elevation

Plate 15.7:	Building 15a – interior, view to the south
Plate 15.8:	Building 15a – interior, view to the north
—————	—————
Plate 16.1:	Building 16 – southern elevation, view to the northeast
Plate 16.2:	Building 16 – southern and eastern elevations
Plate 16.3:	Building 16 – eastern elevation above Building 15
Plate 16.4:	Building 16 – roof showing later extension to the left, view to the southeast
Plate 16.5:	Building 16 – typical ground floor room, view to the northeast
Plate 16.6:	Building 16 – typical first floor consulting room, view to the south
Plate 16.7:	Building 16 – typical first floor store, view to the south
Plate 16.8:	Building 16 – interior of first floor male WC, view to the south
Plate 16.9:	Building 16 – detail of original door with viewing panel and Bakelite signage, view to the south
Plate 16.10:	Building 16 – detail of original door handle
Plate 16.11:	Building 16 –interior of third floor extension, view to the southwest
—————	—————
Plate 17.1:	Building 17a – east elevation
Plate 17.2:	Building 17a –north elevation (right)
Plate 17.3:	Building 17a – west elevation
Plate 17.4:	Building 17a – roof, view to the northwest
Plate 17.5:	Building 17a – exposed north wall of E – W link corridor, view to the southeast
Plate 17.6:	Building 17a – flat roof of E – W link corridor with stair/ lift tower in background, view to the west
Plate 17.7:	Building 17a – south elevation of stair tower
Plate 17.8:	Building 17b – visible remnants of the VD Clinic showing northern lavatory wing and change in brickwork above ground floor, view to the southwest
Plate 17.9:	Building 17b – visible remnants of the VD Clinic showing western lavatory wing and change in brickwork above ground floor, view to the southeast
Plate 17.10:	Building 17b – visible remnants of the VD Clinic showing western lavatory wing change in brickwork above ground floor and between ground floor extension, view to the northeast
Plate 17.11:	Building 17b – northern elevation of post 1938 building, view to the east

Plate 17.12:	Building 17b – c.1960s infill block against the east side of the N – S link corridor, view to the southwest
Plate 17.13:	Building 17b – half glazed extension over two storey flat roofed range, view to the northeast
Plate 17.14:	Building 17a – c.1960s balconies on southern elevation, view to the southeast
Plate 17.15:	Building 17a – basement: 1938 doorcase and overlight at entrance to N-S link corridor, view to the northeast
Plate 17.16:	Building 17a – basement: 1938 parquet flooring of N-S link corridor, view to the north
Plate 17.17:	Building 17a – basement: 1938 swing doors within the central corridor, view to the south
Plate 17.18:	Building 17a – basement: tiled post mortem room, view to the south
Plate 17.19:	Building 17a – basement: tiled mortuary (body store), view to the southwest
Plate 17.20:	Building 17a – basement: physiotherapy department showing wall bars, view to the north
Plate 17.21:	Building 17a – ground floor: E – W link corridor showing opening ceremony plaque and original doors, doorcase and overlight, view to the west
Plate 17.22:	Building 17a – ground floor: detail of opening plaque, view to the north
Plate 17.23:	Building 17a – ground floor: E – W link corridor showing formerly external lancet windows of the chapel, view to the northeast
Plate 17.24:	Building 17a – ground floor: detail of typical original corridor window, view to the northeast
Plate 17.25:	Building 17a – ground floor: detail showing original southern chapel facade beneath the brickwork of the corridor, view to the north
Plate 17.26:	Building 17a – ground floor: interior of lavatories showing original period fixtures, fittings and decor, view to the east
Plate 17.27:	Building 17a – ground floor: detail of original door fittings
Plate 17.28:	Building 17a – ground floor: detail of original sluice sink fittings
Plate 17.29:	Building 17a – ground floor: refurbished treatment rooms, view to the east
Plate 17.30:	Building 17a – second floor: general view along central corridor, view to the south
Plate 17.31:	Building 17a – second floor: central corridor looking through to the preparation/ sterilizing room, view to the north

Plate 17.32:	Building 17a – second floor: detail of gas supply controls to operating theatres
Plate 17.33:	Building 17a – second floor: door from the sterilizing room to Theatre 1 with laser warning sign above, view to the west
Plate 17.34:	Building 17b – basement: interior of original consulting room within the VD clinic showing original door, view to the north
Plate 17.35:	Building 17b – basement: original external window on south side of VD Clinic from within former male changing room, view to the south
Plate 17.36:	Building 17b – basement: detail of original 1936 window catch
Plate 17.37:	Building 17b – basement: former window opening on south side of VD Clinic enlarged to access 1938 extension, view to the northeast
Plate 17.38:	Building 17b – ground floor: hopper-light windows on the south side of link corridor between 17a and 1938 extension to 17b, view to the southeast
Plate 17.39:	Building 17b – ground floor: floor and skirting detail at entrance to link corridor between 17a and 1938 extension to 17b, view to the southwest
Plate 17.40:	Building 17b – ground floor: floor and skirting detail at entrance to office within 1938 extension to 17b, view to the south
Plate 17.41:	Building 17b – ground floor: coved cornice within changing room, view to the north
Plate 17.42:	Building 17b – ground floor: original doors to changing rooms, view to the north
Plate 17.43:	Building 17b – first floor: original doors between link corridor and main block, view to the south
Plate 17.44:	Building 17b – second floor: original metal partitions within the children’s ward, view to the north
Plate 17.45:	Building 17b – second floor: interior of 1960s extension on south side of main block, view to the west
Plate 17.46:	Building 17b – first floor: interior of surgeons changing room in 1960s extension to east side of 17a link corridor, view to the east
Plate 17.47:	Building 17a – second floor: later openings on east side of link corridor accessing 1960s extension (note the change in floor level), view to the northeast
Plate 17.48:	Building 17b – first floor: extended window openings on west elevation accessing balcony, view to the northeast.
=====	=====

Plate 18.1:	Building 18 – north (principal) elevation
Plate 18.2:	Building 18 – detail of stone cornice, view to the southwest
Plate 18.3:	Building 18 – detail of entrance facade and flanking lancets, view to the south
Plate 18.4:	Building 18 – east elevation
Plate 18.5:	Building 18 – west and south elevation, view to the northeast
Plate 18.6:	Building 18 – south elevation
Plate 18.7:	Building 18 – detail of eastern closet wing showing vertical joints in brickwork, view to the northwest
Plate 18.8:	Building 18 – ground floor: entrance hall, view to the south
Plate 18.9:	Building 18 – first floor: gallery and stairwell, view to the north
Plate 18.10:	Building 18 – first floor: gallery showing doors to the duty room, view to the south
Plate 18.11:	Building 18 – first floor: eastern closet wing, view to the south
Plate 18.12:	Building 18 – first floor: western closet wing, view to the south
Plate 18.13:	Building 18 – first floor: eastern part of partitioned duty room, view to the northeast
Plate 18.14:	Building 18 – corridor inserted into the southeast corner of the west ward, view to the south
Plate 18.15:	Building 18 – ground floor: inserted opening in western wall of the stair well, view to the west
Plate 18.16:	Building 18 – ground floor: detail showing original west ward skirting beneath inserted steps, view to the northeast
Plate 18.17:	Building 18 – ground floor: exposed vousoir of the former opening between the west wing and the duty room, view to the north
Plate 18.18:	Building 18 – first floor: southeast corner of west ward showing location of former openings, view to the southeast
Plate 18.19:	Building 18 – first floor: inserted opening from duty room through to western closet wing, view to the southwest
Plate 18.20:	Building 18 – ground floor: southwest corner of eastern ward showing door to eastern closet and former entrance to duty room, view to the south
Plate 18.21:	Building 18 – first floor: southwest corner of eastern ward showing door to eastern closet and former entrance to duty room, view to the south
Plate 18.22:	Building 18 – ground floor: east ward following removal of the floor showing traces of brick ducting, view to the northeast

Plate 18.23:	Building 18 – ground floor: duct passing beneath the floor of the entrance hall, view to the southwest
Plate 18.24:	Building 18 – ground floor: eastern chimney showing stubs of brick ducting projecting from the chambered hearth plinth, view to the northeast
Plate 18.25:	Building 18 – ground floor: interior of northern elevation showing openings to vertical shafts below the ground floor, view to the north
Plate 18.26:	Building 18 – demolition of lower storey showing plaster lined shafts within the north and east walls, view to the northwest
Plate 18.27:	Building 18 – ground floor: main air inlet duct beneath duty room floor, view to the northwest
Plate 18.28:	Building 18 – ground floor: detail of controllable grill in skirting board
Plate 18.29:	Building 18 – first floor: over-papered vent in ceiling of ward, view up
Plate 18.30:	Building 18 – ground floor: detail of double grooved floorboards and metal fillet, view to the southeast
Plate 18.31:	Building 18 – basement: exterior of barrel vault, view to the west
Plate 18.32:	Building 18 – basement: interior, view to the south
Plate 18.33:	Building 18 – basement: interior showing blocked former entrance, view to the west
Plate 18.34:	Building 18 – ground floor: foundation walls below floor in western closet wing showing truncated stub wall (left) and formerly external 'blue' brick, view to the northeast
Plate 18.35:	Building 18 – first floor: interior of comms room, view to the north
Plate 18.36:	Building 18 – first floor: interior of comms room showing lobby area, view to the south
Plate 18.37:	Building 18 – first floor: interior of eastern ward showing inserted partition, view to the northwest
Plate 18.38:	Building 18 – first floor: east side of partitioned duty room, view to the northwest
Plate 18.39:	Building 18 – first floor: west side of partitioned duty room, view to the northwest
Plate 18.40:	Building 18 – detail of later opening from duty room to western closet wing, view to the southwest
—————	—————
Plate 19.1:	Building 19 – general view from first floor of Building 18, view to the northwest
Plate 19.2:	Building 19 – southern and western elevation showing detail of louvers,

	view to the northeast
Plate 19.3:	Building 19 – passage along north side leading to Building 21
Plate 19.4:	Building 19 – interior showing gas bottle racks, view to the west
—————	—————
Plate 20.1:	Building 20 – south and east elevations of southern hut
Plate 20.2:	Building 20 – south and west elevations of northern hut
Plate 20.3:	Building 20 – east elevation of linking range
Plate 20.4:	Building 20 – Interior of southern hut showing half glazed partitions, view to the north
Plate 20.5:	Building 20 – Interior of northern hut showing lab sink and fume cupboard, view to the northeast
Plate 20.6:	Building 20 – detail of effluent scrubber in northern hut, view to the northeast
Plate 20.7:	Building 20 – sterilizing equipment in the linking range, view to the south
Plate 20.8:	Building 20 – lavatories in the linking range, view to the south
—————	—————
Plate 21.1:	Building 21 – south and west elevations
Plate 21.2:	Building 21 – north elevation showing interior, view to the south
—————	—————
Plate 22.1:	Building 22 – general view westwards showing the chapel following the demolition of Building 17
Plate 22.2:	Building 22 – northern elevation
Plate 22.3:	Building 22 – southern elevation following the demolition of the link corridor to Building 17a, view to the northeast
Plate 22.4:	Building 22 – detail of southern elevation during removal of brick skin (corridor wall), view to the east
Plate 22.5:	Building 22 – upper ground floor: later openings in former external southern elevation, view to the northeast
Plate 22.6:	Building 22 – upper ground floor: detail of early 20 th century hopperlight window, view to the northeast
Plate 22.7:	Building 22 – upper ground floor: detail of modified original door in formerly external southern elevation, view to the northeast
Plate 22.8:	Building 22 – upper ground floor: detail of early 20 th century fittings on modified original door, view to the northwest
Plate 22.9:	Building 22 – upper ground floor: interior of modified original door in formerly external southern elevation, view to the south

Plate 22.10:	Building 22 – detail of carved head kneeler on northern elevation, view to the southwest
Plate 22.11:	Building 22 – detail of nave lancet on northern elevation, view to the southwest
Plate 22.12:	Building 22 – original basement windows in southern elevation, view to the northeast
Plate 22.13:	Building 22 – half conical roof of apse, view to the east
Plate 22.14:	Building 22 – detail of stone wheel-head cross at the apex of the gable parapet, view to the east
Plate 22.15:	Building 22 – oculus in eastern elevation (partly obscured by scaffolding), view to the northwest
Plate 22.16:	Building 22 – chimney stack at apex of east elevation, view to the northwest
Plate 22.17:	Building 22 – nave: interior, view to the east
Plate 22.18:	Building 22 – nave: detail of internal east elevation showing external door hinges, view to the east
Plate 22.19:	Building 22 – nave: detail of internal east elevation showing internal door hinges, view to the east
Plate 22.20:	Building 22 – nave: detail of moulded corbel cornice and stone corbel block, view to the northwest
Plate 22.21:	Building 22 – nave: roof structure, view to the west
Plate 22.22:	Building 22 – nave: detail of commemorative plaque on east wall, view to the east
Plate 22.23:	Building 22 – nave: detail of organ pipe case on eastern wall, view to the east
Plate 22.24:	Building 22 – nave: detail of eastern oculus window as seen from inside the boardroom of the Infirmary, view to the west
Plate 22.25:	Building 22 – nave: detail of memorial plaque to Herbert Cole on eastern wall, view to the east
Plate 22.26:	Building 22 – nave: detail of typical plain glazed hopper-light window, view to the southeast
Plate 22.27:	Building 22 – nave: detail of purpose made stained glass window on north side, view to the northwest
Plate 22.28:	Building 22 – nave: close up of lower part of purpose made stained glass window, view to the north
Plate 22.29:	Building 22 – nave: interior showing floor detail, view to the west
Plate 22.30:	Building 22 – nave: chancel arch and pulpit at the west end, view to

	the west
Plate 22.31:	Building 22 – chancel: interior showing communion rail, blind arcade and ribs, view to the west
Plate 22.32:	Building 22 – chancel: detail of southern window, view to the southwest
Plate 22.33:	Building 22 – chancel: detail of central window, view to the west
Plate 22.34:	Building 22 – chancel: detail of northern chancel window, view to the northwest
Plate 22.35:	Building 22 – connecting range: central corridor on upper ground floor, view to the west
Plate 22.36:	Building 22 – connecting range: central corridor on upper ground floor, view to the east
Plate 22.37:	Building 22 – connecting range: central corridor on upper ground floor showing detail of floor tiles, view to the north
Plate 22.38:	Building 22 – connecting range: central corridor on upper ground floor showing ceiling detail, view to the east
Plate 22.39:	Building 22 – connecting range: central corridor on upper ground floor showing doorway on north side, view to the northwest
Plate 22.40:	Building 22 – connecting range: medical library on upper ground floor, view to the north
Plate 22.41:	Building 22 – connecting range: medical library on upper ground floor showing detail of original panelling behind radiator, view to the north
Plate 22.42:	Building 22 – connecting range: north – south corridor on upper ground floor, view to the north
Plate 22.43:	Building 22 – connecting range: central corridor on lower ground floor (LGF) as seen from the medical records store in the Infirmary, view to the west
Plate 22.44:	Building 22 – connecting range: central corridor on lower ground floor looking into central corridor beneath the nave, view to the west
Plate 22.45:	Building 22 – connecting range (LGF): opening to the central corridor beneath the nave, view to the west
Plate 22.46:	Building 22 – connecting range (LGF): detail of skirting within the central corridor and architrave to the contingency store, view to the southwest
Plate 22.47:	Building 22 – connecting range (LGF): door from the central corridor to the 'Contingency Store', view to the southwest
Plate 22.48:	Building 22 – connecting range (LGF): door from the Building 17 link

	corridor to the 'Contingency Store', view to the southeast
Plate 22.49:	Building 22 – connecting range (LGF): interior of the 'Contingency Store', view to the west
Plate 22.50:	Building 22 – connecting range (LGF): interior of the 'Contingency Store' showing high level blocked window (left), view to the east
Plate 22.51:	Building 22 – connecting range (LGF): entrance to the 'ECG Department', view to the south
Plate 22.52:	Building 22 – connecting range (LGF): interior of the 'ECG Department', view to the northwest
Plate 22.53:	Building 22 – connecting range (LGF): interior of the 'ECG Department' showing early 20 th century fittings, view to the northeast
Plate 22.54:	Building 22 – connecting range (LGF): interior of the 'ECG Department' showing high level blocked window, view to the southeast
Plate 22.55:	Building 22 – lower ground floor: entrance from central corridor to the 'Porter's Rest Room', view to the south
Plate 22.56:	Building 22 – lower ground floor: interior of 'Porter's Rest Room' showing window rebates, view to the southeast
Plate 22.57:	Building 22 – lower ground floor: interior of 'Porter's Rest Room' showing piers and high level window, view to the northeast
Plate 22.58:	Building 22 – lower ground floor: interior of 'Porter's Rest Room', view to the east
Plate 22.59:	Building 22 – lower ground floor: interior of 'Porter's Rest Room' showing historic fireplace, view to the east
Plate 22.60:	Building 22 – lower ground floor: interior of 'Porter's Rest Room', view to the west
Plate 22.61:	Building 22 – lower ground floor: interior of 'Porter's Rest Room' showing high level ducts, view to the north
Plate 22.62:	Building 22 – lower ground floor: detail of connecting conduit crossing central corridor and high level window from the 'Porters Rest Room', view to the west
Plate 22.63:	Building 22 – lower ground floor: interior of 'Porters Changing Room' showing entrance from central corridor and high level ducts, view to the south
Plate 22.64:	Building 22 – lower ground floor: interior of 'Porters Changing Room', view to the east
Plate 22.65:	Building 22 – lower ground floor: interior of 'Porters Changing Room' showing detail of inserted doorway in north wall, view to the northwest

Plate 22.66:	Building 22 – lower ground floor: interior of ‘Porters Changing Room’ showing detail of enlarged window in north wall, view to the northeast
Plate 22.67:	Building 22 – lower ground floor: entrance to the electricity switch room from the Building 17 link corridor, view to the northwest
Plate 22.68:	Building 22 – lower ground floor: interior of southern part of the electricity switch room, view to the east
Plate 22.69:	Building 22 – lower ground floor: interior of western part of the electricity switch room, view to the north
Plate 22.70:	Building 22 – lower ground floor: interior of southern part of the electricity switch room, view to the west
Plate 22.71:	Building 22 – lower ground floor: interior of the transformer room, view to the southeast
Plate 22.72:	Building 22 – lower ground floor: interior of the transformer room showing surviving transformer and brick lined sub floor ducting, view to the southwest
Plate 22.73:	Building 22 – lower ground floor: interior of the transformer room showing modified window, view to the north
Plate 22.74:	Building 22 – lower ground floor: interior of the northern side of the transformer room showing historic signage, view to the east
Plate 22.75:	Building 22 – lower ground floor: detail of historic sign
Plate 22.76:	Building 22 – lower ground floor: detail of historic sign
Plate 22.77:	Building 22 – lower ground floor: interior of apse showing inserted doorway, view to the south
Plate 22.78:	Building 22 – lower ground floor: interior of apse showing surviving window opening, view to the north
Plate 22.79:	Building 22 – lower ground floor: interior of apse showing former doorway from central aisle, view to the south
Plate 22.80:	Building 22 – lower ground floor: detail of historic floor tiles (re-laid)
Plate 22.81:	Building 22 – lower ground floor: example of an ‘Octopus Furnace’ (not from this site)
—————	—————
Plate 23.1:	Building 23 – eastern elevation of short N – S corridor at the western end of the structure, view to the northwest
Plate 23.2:	Building 23 – exposed western elevation of short N – S corridor at the western end of the structure, view to the east
Plate 23.3:	Building 23 – exposed southern elevation of the E – W corridor at the western end of the structure, view to the north

Plate 23.4:	Building 23 - exposed western elevation of short N – S corridor at the eastern end of the structure, view to the east
Plate 23.5:	Building 23 - exposed eastern elevation of short N – S corridor at the eastern end of the structure, view to the west
Plate 23.6:	Building 23 - interior of short N – S corridor at the eastern end of the structure showing rooflight, view to the north
Plate 23.7:	Building 23 - interior of the E – W corridor, view to the southwest
Plate 23.8:	Building 23 - internal southern elevation of the E – W corridor at the western end of the structure showing pier and blocked opening, view to the southeast
Plate 23.9:	Building 23 - internal southern elevation of the E – W corridor showing inserted doorway to Building 32, view to the southeast
Plate 23.10:	Building 23 – inserted opening to staff restaurant at east end of the E – W corridor, view to the northeast
Plate 23.11:	Building 23 – pilaster on the north wall of the E – W corridor showing location of commemorative plaque, view to the northeast
Plate 23.12:	Building 23 – detail of commemorative plaque on internal north elevation
—————	—————
Plate 24.1:	Building 24 – eastern elevation (2005)
Plate 24.2:	Building 24 – south eastern wing, view to the southwest (2005)
Plate 24.3:	Building 24 – detail of north facing elevation of SE wing showing point of extension
Plate 24.4:	Building 24 – southeast corner tower (Building 24f), view to the northwest
Plate 24.5:	Building 24 – detail of principal entrance steps, view to the west
Plate 24.6:	Building 24 – detail showing principal entrance and steps following removal of the stone treads, view to the west
Plate 24.7:	Building 24 – detail showing structure of tread supports, view to the west
Plate 24.8:	Building 24 – post excavation shot following removal of central tread supporting wall, view to the west
Plate 24.9:	Building 24 – exterior of barrel vault supporting central platform, view to the northwest
Plate 24.10:	Building 24 – detail of decorative grill across central oculus, view to the west
Plate 24.11:	Building 24 – detail showing surviving bead moulding around base of

	oculus, view to the southwest
Plate 24.12:	Building 24 – sloping floor inside the barrel vault of the central platform, view to the south
Plate 24.13:	Building 24 – enlarged opening through the Infirmary wall beneath the central platform, view to the west
Plate 24.14:	Building 24 – inserted opening in south side of the barrel vault
Plate 24.15:	Building 24 – modern grille across the mouth of the vent, view to the north
Plate 24. 16:	Building 24 – northern wing , view to the west
Plate 24.17:	Building 24 – north elevation above Building 40
Plate 24.18:	Building 24 – detail of north western extension (Buildings 24b and 24g) showing vertical and horizontal changes in brickwork
Plate 24.19:	Building 24 – detail of upper ground floor window in the northern elevation showing hopper light, view to the northwest
Plate 24.20:	Building 24 – western elevation above the roof of the chapel (Building 22) view to the east
Plate 24.21:	Building 24 – detail of central part of western elevation showing canted bay, view to the northeast
Plate 24.22:	Building 24 – detail of left hand part of the central western elevation, view to the east
Plate 24.23:	Building 24 - detail of right hand part of the central western elevation, view to the east
Plate 24.24:	Building 24 – northwest wing, view to the northeast
Plate 24.25:	Building 24 – southwest wing, view to the southeast
Plate 24.26:	Building 24 – southern elevation following demolition of buildings to the south, view to the northeast
Plate 24.27:	Building 24 – southern elevation showing detail of left hand part of lower ground floor, view to the northeast
Plate 24.28:	Building 24 - southern elevation showing detail of right hand part of lower ground floor, view to the northeast
Plate 24.29:	Building 24 – southern elevation showing original central doorway
Plate 24.30:	Building 24 – southern elevation showing detail showing point of attachment of the southwest corner tower, view to the northwest
Plate 24.31:	Building 24 - southern elevation showing detail of graffiti on lower ground floor of western extension (Building 24d), view to the north
Plate 24.32:	Building 24 - southern elevation showing detail of graffiti on lower ground floor of original building (Building 24a)

Plate 24.33:	Building 24 - southern elevation showing detail of graffiti on lower ground floor of original building (Building 24a)
Plate 24.34:	Building 24 - southern elevation showing detail of graffiti on lower ground floor of original building (Building 24a)
Plate 24.35:	Building 24 - entrance hall, view to the west
Plate 24.36:	Building 24 - entrance hall, detail of entablature, view to the northeast
Plate 24.37:	Building 24 - main north - south corridor, view to the north
Plate 24.38:	Building 24 - entrance hall, view to the east
Plate 24.39:	Building 24 - entrance hall showing detail of modified alcove, view to the northeast
Plate 24.40:	Building 24 - entrance hall, view to the north
Plate 24.41:	Building 24 - entrance hall, detail of fireplace, view to the south
Plate 24.42:	Building 24 - detail of door to the boardroom, view to the west
Plate 24.43:	Building 24 - detail of plaque above the boardroom door, view to the west
Plate 24.44:	Building 24 - boardroom, view to the east
Plate 24.45:	Building 24 - boardroom, detail of ceiling, view to the east
Plate 24.46:	Building 24 - boardroom showing fireplace in 2005, view to the northeast
Plate 24.47:	Building 24 - boardroom showing fireplace in 2008, view to the north
Plate 24.48:	Building 24 - boardroom showing southern window, view to the southeast
Plate 24.49:	Building 24 - cash office [Room 1.21], view to the east
Plate 24.50:	Building 24 - cash office [Room 1.21], view to the southeast
Plate 24.51:	Building 24 - door from central corridor to the cash office, view to the west
Plate 24.52:	Building 24 - northern staircase, view to the west
Plate 24.53:	Building 24 - detail of balustrade to northern staircase, view to the north
Plate 24.54:	Building 24 - comms room [Room 1.19], view to the southeast
Plate 24.55:	Building 24 - comms room [Room 1.19], view to the northwest
Plate 24.56:	Building 24 - comms room [Room 1.19], view to the northwest
Plate 24.57:	Building 24 - Room 1.18, view to the east
Plate 24.58:	Building 24 - Rushout Ward [Room 1.11], view to the west
Plate 24.59:	Building 24 - Rushout Ward [Room 1.11], view to the east
Plate 24.60:	Building 24 - Rushout Ward [Room 1.11] west end (Building 24b), view to the west

Plate 24.61:	Building 24 - Rushout Ward [Room 1.11], view to the south
Plate 24.62:	Building 24 - Rushout Ward [Room 1.11], view to the southwest
Plate 24.63:	Building 24 - Rushout Ward [Room 1.11] showing detail of riveted beam, view up and to the northwest
Plate 24.64:	Building 24 - Rushout Ward [Room 1.17] showing closet wing, view to the south
Plate 24.65:	Building 24 - Rushout Ward [Room 1.12 and 13] showing interior of corner tower, view to the northwest
Plate 24.66:	Building 24 - Rushout Ward [Room 1.12] showing interior of corner tower, view to the east
Plate 24.67:	Building 24 - Rushout Ward [Room 1.12] showing corner tower connecting corridor, view to the southeast
Plate 24.68:	Building 24 - entrance to Visiting Staff Room [Room 1.30], view to the east
Plate 24.69:	Building 24 - Visiting Staff Room [Room 1.30], view to the north
Plate 24.70:	Building 24 - Visiting Staff Room [Room 1.30], view to the east
Plate 24.71:	Building 24 - Visiting Staff Room [Room 1.30], view to the south
Plate 24.72:	Building 24 - Visiting Staff Room [Room 1.30], view to the west
Plate 24.73:	Building 24 - entrance to Room 1.31, view to the east
Plate 24.74:	Building 24 - Room 1.32, view to the east
Plate 24.75:	Building 24 - Room 1.32, view to the southwest
Plate 24.76:	Building 24 - corridor and southern lift looking towards the Building 17 link corridor, view to the west
Plate 24.77:	Building 24 - southern staircase, view to the southwest
Plate 24.78:	Building 24 - Wheeley Lea Ward [Room 1.35], view to the west
Plate 24.79:	Building 24 - Wheeley Lea Ward [Room 1.35], view to the east
Plate 24.80:	Building 24 - Wheeley Lea Ward [Room 1.36], view to the northwest
Plate 24.81:	Building 24 - Wheeley Lea Ward [Room 1.36], view up and to the east
Plate 24.82:	Building 24 - Wheeley Lea Ward [Room 1.35] showing point of eastern extension, view to the southwest
Plate 24.83:	Building 24 - Wheeley Lea Ward [Room 1.35] showing redundant fire exit, view to the south
Plate 24.84:	Building 24 - Wheeley Lea Ward [Room 1.35] showing point of eastern extension, view to the west
Plate 24.85:	Building 24 - Wheeley Lea Ward [Room 1.40] showing interior of corner tower (Building 24g), view to the west
Plate 24.86:	Building 24 - Wheeley Lea Ward [Room 1.35] showing first floor

	structure in eastern extension (Building 24f), view to the northeast
Plate 24.87:	Building 24 - Wheeley Lea Ward [Room 1.35] showing entrance to corner tower, view to the southeast
Plate 24.88:	Building 24 - Wheeley Lea Ward [Room 1.33 and 34] showing interior of corner tower, view to the southeast
Plate 24.89:	Building 24 - lower ground floor: central corridor [Room 90] looking through the southern entrance, view to the south
Plate 24.90:	Building 24 - lower ground floor: central corridor [Room 90] from the south, view to the north
Plate 24.91:	Building 24 - lower ground floor: southern stairwell and entrance to kitchens, view to the west
Plate 24.92:	Building 24 - lower ground floor: southern lift and entrance to Building 17 link corridor, view to the west
Plate 24.93:	Building 24 - lower ground floor: central corridor [Room 90] central section, view to the north
Plate 24.94:	Building 24 - lower ground floor: foot of northern stairs, view to the northwest
Plate 24.95:	Building 24 - lower ground floor: northern stairwell and entrance to Building 24e, view to the west
Plate 24.96:	Building 24 - lower ground floor: central corridor [Room 90] looking toward the northern entrance, view to the north
Plate 24.97:	Building 24 - lower ground floor: entrance to the Spire Suite ([Room 74], view to the southwest
Plate 24.98:	Building 24 - lower ground floor: nursing staff changing area [Room 109], view to the east
Plate 24.99:	Building 24 - lower ground floor: nursing staff changing area [Room 109], view to the southeast
Plate 24.100:	Building 24 - lower ground floor: nursing staff changing area [Room 109], view to the west
Plate 24.101:	Building 24 - lower ground floor: nursing staff changing area [Room 109] showing blocked cooking range, view to the northwest
Plate 24.102:	Building 24 - lower ground floor: storekeepers room [Room 109], view to the southwest
Plate 24.103:	Building 24 - lower ground floor: storekeepers room [Room 109], view to the southeast
Plate 24.104:	Building 24 - lower ground floor: entrance to catering office [Room 108], view to the north

Plate 24.105:	Building 24 - lower ground floor: catering office [Room 108], view to the northwest
Plate 24.106:	Building 24 - lower ground floor: catering office [Room 108], view to the northwest
Plate 24.107:	Building 24 - lower ground floor: original opening in southern elevation of Building 24f, view to the northeast
Plate 24.108:	Building 24 - lower ground floor: later lean-to corridor against southern elevation of Building 24f, view to the west
Plate 24.109:	Building 24 - lower ground floor: original opening in base of southeast corner tower, view to the northeast
Plate 24.110:	Building 24 - lower ground floor: interior of southeast corner tower looking through inserted opening into Building 38, view to the south
Plate 24.111:	Building 24 - lower ground floor: doorway from central corridor through to main kitchens [Room 110], view to the west
Plate 24.112:	Building 24 - lower ground floor: southern part of main kitchens, view to the northwest
Plate 24.113:	Building 24 - lower ground floor: central part of main kitchens looking towards side entrance, view to the north
Plate 24.114:	Building 24 - lower ground floor: former side entrance to kitchens showing supporting arch for the closet wing, view to the north
Plate 24.115:	Building 24 - lower ground floor: detail of inserted window in blocking wall across former side entrance to kitchens, view to the north
Plate 24.116:	Building 24 - lower ground floor: point of western extension to main kitchens, view to the northwest
Plate 24.117:	Building 24 - lower ground floor: former external west wall of extension and doorway to corner tower, view to the west
Plate 24.118:	Building 24 - lower ground floor: interior of southwest corner tower showing original external doorway, view to the east
Plate 24.119:	Building 24 - lower ground floor: interior of southwest corner tower showing barrel vault, view to the west
Plate 24.120:	Building 24 - lower ground floor: 1920s extension to main kitchens, view to the north
Plate 24.121:	Building 24 - lower ground floor: interior of northern annex to kitchens [Room 105], view to the west
Plate 24.122:	Building 24 - lower ground floor: covered entrance to southern stairwell of Infirmary and entrance to basement, view to the east
Plate 24.123:	Building 24 - lower ground floor: stairs to basement, view to the east

Plate 24.124:	Building 24 - basement: interior showing barrel ramp, view to the south
Plate 24.125:	Building 24 - basement: interior showing stairs and cupboard
Plate 24.126:	Building 24 - basement: detail of cupboard door, view to the north east
Plate 24.127:	Building 24 - lower ground floor: interior of Room 103, view to the east
Plate 24.128:	Building 24 - lower ground floor: interior of 'Blood Sampling' [Room 102] showing inserted glazed partition, view to the southwest
Plate 24.129:	Building 24 - lower ground floor: door to central eastern room [Room 89], view to the east
Plate 24.130:	Building 24 - lower ground floor: Room 89 showing inner conduit, view to the east
Plate 24.131:	Building 24 - lower ground floor: Room 89, view to the north
Plate 24.132:	Building 24 - lower ground floor: Records Store [Room 91] showing entrance to chapel undercroft, view to the west
Plate 24.133:	Building 24 - lower ground floor: Records Store [Room 91] showing entrance from central corridor, view to the east
Plate 24.134:	Building 24 - lower ground floor: detail of northern original window and blocking of Building 24e [Room 91], view to the north
Plate 24.135:	Building 24 - lower ground floor: detail of southern original window and blocking of Building 17 link corridor [Room 91], view to the south
Plate 24.136:	Building 24 - lower ground floor: interior of office [Room 88] showing blocked head, view to the west
Plate 24.137:	Building 24 - lower ground floor: interior of office [Room 88] showing modified original window, view to the west
Plate 24.138:	Building 24 - lower ground floor: interior of enquiries office [Room 86] showing blocked original window
Plate 24.139:	Building 24 - lower ground floor: detail of late Victorian chimney piece in enquiries office, view to the south
Plate 24.140:	Building 24 - lower ground floor: dermatology department [Room 66] showing inserted glazed partitions, view to the southeast
Plate 24.141:	Building 24 - lower ground floor: original windows in examination room [Room 68], view to the southwest
Plate 24.142:	Building 24 - lower ground floor: part blocked original window in north wall of examination room [Room 65], view to the northwest
Plate 24.143:	Building 24 - lower ground floor: main corridor [room 74] in Spires

	Suite showing modern partitioning, view to the east
Plate 24.144:	Building 24 - lower ground floor: original openings in west elevation of Building 24b [Room 58], view to the southwest
Plate 24.145:	Building 24 - lower ground floor: former original entrance to Building 24b now blocked in Room 72, view to the southwest
Plate 24.146:	Building 24 - lower ground floor: late 20th century entrance, lobby and doors to the ECG room in Building 24e, view to the southwest
Plate 24.147:	Building 24 - lower ground floor: pharmaceutical store [Room 53] in base of northwest corner tower, view to the west
Plate 24.148:	Building 24 - lower ground floor: air ducts in modified original window openings, view to the southwest
Plate 24.149:	Building 24 - lower ground floor: original (right) and inserted (left) doorways in pharmaceutical store, view to the east
Plate 24.150:	Building 24 - lower ground floor: blocked openings in original western elevation of north wing (Building 24a) following soft strip, view to the southeast
Plate 24.151:	Building 24 - first floor: central corridor, view to the north
Plate 24.152:	Building 24 - first floor: west wall of central corridor showing commemorative plaque, view to the southwest
Plate 24.153:	Building 24 - first floor: detail of commemorative plaque
Plate 24.154:	Building 24 - first floor: detail of northern lift and surround, view to the northeast
Plate 24.155:	Building 24 - first floor: part blocked round headed arch in central corridor, view to the north
Plate 24.156:	Building 24 - first floor: inserted opening in west wall of corridor for Building 17 link corridor and lift, view to the west
Plate 24.157:	Building 24 - first floor: change in form of balustrade to northern staircase, view to the northwest
Plate 24.158:	Building 24 - first floor: detail of balustrade above first floor level
Plate 24.159:	Building 24 - first floor: ward [Room 2.22] over board room showing original windows in canted bay, view to the west
Plate 24.160:	Building 24 - first floor: north wall of ward [Room 2.22] showing blocked fireplace and typical remodelled doorway, view to the northeast
Plate 24.161:	Building 24 - first floor: interior of interior of ward [Room 2.18] showing original window, view to the west
Plate 24.162:	Building 24 - first floor: general view along Garlick Ward, view to the

	east
Plate 24.163:	Building 24 – first floor: general view along Garlick Ward, view to the west
Plate 24.164:	Building 24 – first floor: inserted 1940s partitions at west of Garlick Ward, view to the southwest
Plate 24.165:	Building 24 – first floor: west end of Garlick Ward showing short window (right), original window (left) and mis-aligned entrance to tower closet, view to the northwest
Plate 24.166:	Building 24 – first floor: detail of typical sill in northwest corner tower
Plate 24.167:	Building 24 – first floor: east end of Garlick Ward showing inserted entrance to utility store room [Room 2.11], view to the south
Plate 24.168:	Building 24 – first floor: interior of utility store room, showing inserted door to relatives room, view to the southeast
Plate 24.169:	Building 24 – first floor: interior of 'Relatives Room' showing original window, view to the northeast
Plate 24.170:	Building 24 – first floor: interior of 'Relatives Room' showing blocked fireplace, view to the northwest
Plate 24.171:	Building 24 – first floor: interior of shower room showing later partitions, view to the northeast
Plate 24.172:	Building 24 – first floor: southern part of central corridor showing inserted doorway (left) to sluice room [Room 2.24 and 25], view to the southeast
Plate 24.173:	Building 24 – first floor: interior of Room 2.24 showing inserted partitions and openings (right), view to the east
Plate 24.174:	Building 24 – first floor: interior of sluice room, view to the southeast
Plate 24.175:	Building 24 – first floor: inserted opening between Room 2.25 and ward [Room 2.26], view to the south
Plate 24.176:	Building 24 – first floor: interior of ward [Room 2.26] showing blocked fireplace, view to the south
Plate 24.177:	Building 24 – first floor: west wall of ward [Room 2.26] showing blocked door, view to the south.
Plate 24.178:	Building 24 – first floor: south end of central corridor showing door to store room [2.21] and Ganderton Ward, view to the south east
Plate 24.179:	Building 24 – first floor: Ganderton Ward [Room 2.34], view to the east
Plate 24.180:	Building 24 – first floor: detail showing brass stop cock opening in floor
Plate 24.181:	Building 24 – first floor: exposed joist carrying 3 rd floor over closet

	wing opening, view to the southwest
Plate 24.182:	Building 24 – first floor: western end of Ganderton Ward showing inserted partitions, view to the west
Plate 24.183:	Building 24 – first floor: exposed original ceiling of the southwest corner tower, view up.
Plate 24.184:	Building 24 – first floor: eastern end of Ganderton Ward showing modified windows, view to the southeast
Plate 24.185:	Building 24 – second floor: central corridor, view to the south
Plate 24.186:	Building 24 – second floor: central corridor, view to the north
Plate 24.187:	Building 24 – second floor: top of the northern staircase, view to the northwest
Plate 24.188:	Building 24 – second floor: false ceiling over northern stairwell, view to the northwest
Plate 24.189:	Building 24 – second floor: historic roof structure following removal of false ceiling over northern stairwell, view to the northwest
Plate 24.190:	Building 24 – second floor: top of the southern staircase, view to the southwest
Plate 24.191:	Building 24 – second floor: area around southern lift, view to the west
Plate 24.192:	Building 24 – second floor: central western room showing subdivision, view to the west
Plate 24.193:	Building 24 – second floor: entrance to the Maddox Ward, view to the north
Plate 24.194:	Building 24 – second floor: subdivision of the eastern part of Maddox Ward, view to the southeast
Plate 24.195:	Building 24 – second floor: easternmost area of Maddox Ward, view to the north
Plate 24.196:	Building 24 – second floor: western part of the Maddox Ward, view to the west
Plate 24.197:	Building 24 – second floor: inserted fire escape doors in west of Maddox Ward, view to the south
Plate 24.198:	Building 24 – second floor: closet wing in original form, view to the east
Plate 24.199:	Building 24 – second floor: ceramic conduit in roof above closet wing, view to the east
Plate 24.200:	Building 24 – second floor: cowl on roof above the closet wing, view to the northeast
Plate 24.201:	Building 24 – second floor: western part of Maddox Ward showing

	entrance to closet wing, view to the north
Plate 24.202:	Building 24 – second floor: ceiling of northwest closet wing showing inserted steel joists, view to the west
Plate 24.203:	Building 24 – second floor: detail of chalked inscription on steel joists, view to the south
Plate 24.204:	Building 24 – second floor: central eastern room showing subdivision, view to the southeast
Plate 24.205:	Building 24 – second floor: inserted opening in the east wall of the central corridor and north wall of Room [3.24], view to the southeast
Plate 24.206:	Building 24 – second floor: general view of Bonaker Ward, view to the east
Plate 24.207:	Building 24 – second floor: general view of Bonaker Ward, view to the west
Plate 24.208:	Building 24 – second floor: inserted opening in the north wall of the Bonaker Ward, view to the northwest
Plate 24.209:	Building 24 – second floor: inserted fire escape doors in south wall of Bonaker Ward, view to the south
Plate 24.210:	Building 24 – second floor: interior of southeast corner tower, view to the south
Plate 24.211:	Building 24 – second floor: lathe and plaster lining to roof of the southeast corner tower, view to the northwest
Plate 24.212:	Building 24 – second floor: structure of roof apex over the southeast corner tower
Plate 24.213:	Building 24 – second floor: western part of Bonaker ward showing subdivision and entrance to the southwest corner tower, view to the southwest
Plate 24.214:	Building 24 – second floor: interior of southwest corner tower showing lavatory partitions, view to the southwest
Plate 24.215:	Building 24 – roof structure: former tank support structure in central part of roof, view to the southwest
Plate 24.216:	Building 24 – roof structure: lathe and plaster chamber in roof west of centre
Plate 24.217:	Building 24 – roof structure: chimney showing extension, view to the south
Plate 24.218:	Building 24 – roof structure: former steps to roof access dormer, view to the west
Plate 24.219:	Building 24 – roof structure: internal lead rainwater hopper and pipe,

	view to the west
Plate 25. 1:	Building 25 – general view of coal conveyor from the southwest
Plate 25.2:	Building 25 –shipping container doors at the south eastern end
Plate 25.3:	Building 25 – interior, view to the northwest
Plate 25.4:	Building 25 – detail of floor bars and lugs, view to the northwest
Plate 25.5:	Building 25 – hydraulic reservoir and pump beneath the conveyor, view to the east
Plate 25.6:	Building 25 – interior of bunded tank showing conveyor trestles, view to the north
Plate 25.7:	Building 25 – foundation slabs for former oil storage tanks showing discarded screw, view to the south
Plate 25.8:	Building 25 – apertures in lower part of boiler house southern elevation, view to the northwest
Plate 26.1:	Building 26 – exposed southern elevation, view to the north
Plate 26.2:	Building 26 – flat roof, view to the north
Plate 26.3:	Building 26 – detail of crenellated parapet, view to the northwest
Plate 26.4:	Building 26 – view of terrace into which the building was set, view to the northeast
Plate 26.5:	Building 26 – ambulance bay, view to the east
Plate 26.6:	Building 26 – detail of ambulance turntable, view to the southwest
Plate 26.7:	Building 26 – principal eastern corridor, view to the north
Plate 26.8:	Building 26 – typical level of survival of fittings, view to the northwest
Plate 26.9:	Building 26 – graffiti left by departing staff in the plaster room, view to the north
Plate 26.10:	Building 26 – original doors fitted to the pedestrian entrance, view to the northwest
Plate 26.11:	Building 26 – children’s ward, view to the north
Plate 26.12:	Building 26 – triage area showing assessment cubicles, view to the east
Plate 26.13:	Building 26 – interior of plaster room showing plaster mixer (right) and light box, view to the west
Plate 27.1:	Building 27a – eastern elevation from across the green
Plate 27.2:	Building 27a – detail of central part of eastern elevation
Plate 27.3:	Building 27a – detail of principal entrance
Plate 27.4:	Building 27a – northern entrance on eastern elevation, view to the

	southwest
Plate 27.5:	Building 27a - southern entrance on eastern elevation, view to the northwest
Plate 27.6:	Building 27a - northern elevation, view to the southeast
Plate 27.7:	Building 27a - southern elevation, view to the northeast
Plate 27.8:	Building 27a - detail showing underside of the elevated corridor, view to the north
Plate 27.9:	Building 27a - western elevation
Plate 27.10:	Building 27a - western elevation of the southern wing
Plate 27.11:	Building 27a - western elevation of the northern wing
Plate 27.12:	Building 27a - detail of typical rainwater head, view to the southwest
Plate 27.13:	Building 27a - ground floor: principal corridor, view to the north
Plate 27.14:	Building 27a - ground floor: main entrance hall, view to the southeast
Plate 27.15:	Building 27a - ground floor: inner doors of principal entrance
Plate 27.16:	Building 27a - ground floor: porch of principal entrance, view to the west
Plate 27.17:	Building 27a - eastern side of entrance hall showing reduced opening to stair hall, view to the west
Plate 27.18:	Building 27a - ground floor: central staircase, view to the southeast
Plate 27.19:	Building 27a - ground floor: interior of toilet block to the north of the principal entrance, view to the east
Plate 27.20:	Building 27a - ground floor: sisters' sitting room, view to the northwest
Plate 27.21:	Building 27a - ground floor: detail of 'Wellington' fireplace within sisters' sitting room, view to the north
Plate 27.22:	Building 27a - ground floor: example of invitation found behind fire surround in the sisters' sitting room
Plate 27.23:	Building 27a - ground floor: NHS internal note found behind fire surround in the sister's sitting room
Plate 27.24:	Building 27a - ground floor: nurses' sitting room, view to the southwest
Plate 27.25:	Building 27a - ground floor: typical room to the north of the entrance hall, view to the north
Plate 27.26:	Building 27a - ground floor: detail of original fireplace in the northern wing
Plate 27.27:	Building 27a - basement: interior of domestic staff room at north end of basement, view to the northwest

Plate 27.28:	Building 27a - basement: detail of original door, view to the north
Plate 27.29:	Building 27a - basement: original part glazed partition, view to the southwest
Plate 27.30:	Building 27a - basement: former domestic laundry room, view to the west
Plate 27.31:	Building 27a - basement: nurses' accommodation, view to the southwest
Plate 27.32:	Building 27a - second floor: typical nurses' room, view to the southwest
Plate 27.33:	Building 27a - second floor: original bathroom partitions, view to the northwest
Plate 27.34:	Building 27a - first floor: linen storage cupboards, view to the northwest
Plate 27.35:	Building 27a - second floor: central corridor, view to the south
Plate 27.36:	Building 27a - second floor: detail of original door, view to the west
Plate 27.37:	Building 27a - second floor: detail of original sink, view to the south
Plate 27.38:	Building 27a - second floor: detail of original toilet, view to the northwest
Plate 27.39:	Building 27a - second floor: detail of original toothbrush holder, view to the west
Plate 27.40:	Building 27a - second floor: detail of original linoleum, view to the northwest
Plate 27.41:	Building 27b - northeast elevation showing ground floor connecting corridor from building 27a
Plate 27.42:	Building 27b - detail of principal entrance treatment to connecting corridor
Plate 27.43:	Building 27b - southeast elevation at east end of building, view to the northwest
Plate 27.44:	Building 27b - southern elevation, view to the west
Plate 27.45:	Building 27b - southern elevation of western cross range showing fire escape, view to the northwest
Plate 27.46:	Building 27b - western elevation of cross range
Plate 27.47:	Building 27b - west end of northern elevation, view to the south
Plate 27.48:	Building 27b - northern elevation showing west side of elevated corridor, view to the east
Plate 27.49:	Building 27b - detail of eastern side of elevated corridor

Plate 27.50:	Building 27b – ground floor: interior of connecting corridor leading from the principal entrance to the building, view to the southeast
Plate 27.51:	Building 27b – ground floor: principal staircase at eastern end, view to the northeast
Plate 27.52:	Building 27b – ground floor: inserted lift, view to the north
Plate 27.53:	Building 27b – ground floor: principal central corridor, view to the east
Plate 27.54:	Building 27b – ground floor: central corridor of western cross wing, view to the north
Plate 27.55:	Building 27b – ground floor: storage cupboard with original door, view to the southwest
Plate 27.56:	Building 27b – ground floor: typical modified bedroom, view to the southeast
Plate 27.57:	Building 27b – ground floor: converted bedroom and store room, view to the south
Plate 27.58:	Building 27b – ground floor: original bathroom suite and tiling, view to the south
Plate 27.59:	Building 27b – lower ground floor: archive shelves in former cinema, view to the west
Plate 27.60:	Building 27b – lower ground floor: eastern wall of archive room showing blocked projection aperture
Plate 27.61:	Building 27b – lower ground floor: interior of projector room, view to the west
Plate 27.62:	Building 27b – lower ground floor: loading bay and mezzanine at western end, view to the northwest
Plate 27.63:	Building 27b – first floor: interior of elevated corridor looking from Building 27a, view to the south
Plate 27.64:	Building 27b – first floor: termination of western staircase at first floor level, view to the east
Plate 27.65:	Building 27b – first floor: interior of lift, view to the north
Plate 27.66:	Building 27b – first floor: original sluice room and fittings, view to the south
Plate 27.67:	Building 27b – first floor: converted bedrooms, view to the south
Plate 27.68:	Building 27b – first floor: converted and refurbished bedrooms, view to the northeast
Plate 27.69:	Building 27b – first floor: blocked lancet window, view to the south
Plate 27.70:	Building 27b – first floor: former payphone area showing graffiti, view to the southwest

Plate 27.71:	Building 27b – second floor: original bedroom view to the southeast
Plate 27.72:	Building 27b – second floor: washroom cupboard
Plate 27.73:	Building 27b – second floor: original bathroom, view to the north
Plate 27.74:	Building 27b – second floor: 'Sani-can' from bathroom
—————	—————
Plate 28.1:	Building 28 – south and east elevations
Plate 28.2:	Building 28 – west elevation
Plate 28.3:	Building 28 – interior, view to the west
—————	—————
Plate 29.1:	Building 29 – north and east elevations showing interior
Plate 29.2:	Building 29 – west elevation
Plate 29.3:	Building 29 – detail of original switches
—————	—————
Plate 30.1:	Building 30 – northern elevation
Plate 30.2:	Building 30 – doorcase to principal (front) entrance, view to the south
Plate 30.3:	Building 30 – detail of door knocker on front door
Plate 30.4:	Building 30 – detail of 1820s ground floor window, view to the southwest
Plate 30.5:	Building 30 – detail of 1820s first floor window showing eaves cornice, view up and to the southeast
Plate 30.6:	Building 30 – western elevation, view to the northeast
Plate 30.7:	Building 30 – detail of western elevation showing changes in brickwork, view to the northwest
Plate 30.8:	Building 30 – southern elevation
Plate 30.9:	Building 30 – eastern side of southwest wing
Plate 30.10:	Building 30 – detail of original southern elevation showing alterations to brickwork below stairlight, view to the north
Plate 30.11:	Building 30 – eastern elevation, view to the southwest
Plate 30.12:	Building 30 – ground floor: entrance hall showing later staircase, view to the southwest
Plate 30.13:	Building 30 – ground floor: entrance hall showing carved newel to staircase
Plate 30.14:	Building 30 – ground floor: entrance hall showing detail of cornice
Plate 30.15:	Building 30 – ground floor: entrance hall showing ceiling rose
Plate 30.16:	Building 30 – ground floor: northwest principal room, view to the northwest
Plate 30.17:	Building 30 – ground floor: northwest principal room showing detail of

	1820s window case, view to the northwest
Plate 30.18:	Building 30 – ground floor: northwest principal room showing detail of 1820s shutters, view to the west
Plate 30.19:	Building 30 – ground floor: northeast principal room, view to the southeast
Plate 30.20:	Building 30 – ground floor: northeast principal room showing detail of blocked fireplace, view to the south
Plate 30.21:	Building 30 – ground floor: northeast principal room showing original doors to wardrobe, view to the southwest
Plate 30.22:	Building 30 – ground floor: northeast principal room showing vent in rear of wardrobe, view to the south
Plate 30.23:	Building 30 – ground floor: kitchen in mid 19 th century extension to southwest wing, view to the south
Plate 30.24:	Building 30 – ground floor: kitchen in mid 19 th century extension to southwest wing, view to the north
Plate 30.25:	Building 30 – ground floor: bedroom in late 20 th century southeast wing, view to the southeast
Plate 30.26:	Building 30 – lower ground floor: westernmost part of original basement showing inserted door and blocked fireplace, view to the south
Plate 30.27:	Building 30 – lower ground floor: westernmost part of original basement showing original door to central room, view to the east
Plate 30.28:	Building 30 – lower ground floor: westernmost part of original basement showing part blocked window opening, view to the west
Plate 30.29:	Building 30 – lower ground floor: westernmost part of original basement showing remnants of service bell arrangement, view to the north
Plate 30.30:	Building 30 – lower ground floor: central part of original basement showing inserted stair enclosure and scar of former stairs, view to the south
Plate 30.31:	Building 30 – lower ground floor: easternmost part of original basement showing blocked fireplace and window, view to the south
Plate 30.32:	Building 30 – lower ground floor: easternmost part of original basement showing part blocked window, view to the east
Plate 30.33:	Building 30 – lower ground floor: corridor along north of late 20 th century extension showing inserted opening through rear wall of original house, view to the west

Plate 30.34:	Building 30 – lower ground floor: refurbished interior of early 19 th century southwest extension, view to the southwest
Plate 30.35:	Building 30 – lower ground floor: rear entrance to late 20 th century extension, view to the southwest
Plate 30.36:	Building 30 – lower ground floor: interior of south eastern room in the late 20 th century extension, view to the southeast
Plate 30.37:	Building 30 – first floor: landing showing inserted door beyond, view to the southwest
Plate 30.37:	Building 30 – first floor: landing showing original doorways to the bathroom and attic stairs
Plate 30.39:	Building 30 – first floor: northwest principal room, view to the northwest
Plate 30.40:	Building 30 – first floor: northwest principal room showing blocked connecting door to bathroom, view to the northeast
Plate 30.41:	Building 30 – first floor: northwest principal room showing detail of window and surround, view to the northeast
Plate 30.: 42	Building 30 – first floor: northeast principal room, view to the northeast
Plate 30.43:	Building 30 – first floor: northeast principal room showing doorway to wardrobe, view to the south
Plate 30.44:	Building 30 – first floor: interior of bathroom, view to the north
Plate 30.45:	Building 30 – first floor: bedroom in late 19 th century extension to southwest wing showing inserted doorway through rear wall of original house, view to the north
Plate 30.46:	Building 30 – first floor: bedroom in late 19 th century extension to southwest wing, view to the southwest
Plate 30.47:	Building 30 – first floor: original stairs to attic floor, view to the north
Plate 30.48:	Building 30 – attic floor: early 20 th century stair enclosure, view to the northeast
Plate 30.49:	Building 30 – attic floor: bedroom and fire escape window, view to the south
Plate 30.50:	Building 30 – attic floor: northern corridor, view to the west
Plate 30.51:	Building 30 – attic floor: interior of former store room, view to the west
Plate 30.52:	Building 30 – attic floor: interior of former store room showing roof access hatch and low door to southwest store, view to the south
Plate 30.53:	Building 30 – attic floor: interior of southwest store room, view to the

	southwest
Plate 30.54:	Building 30 – attic floor: northern corridor showing doors to bedroom and eastern roof space, view to the southeast
Plate 30.55:	Building 30 – attic floor: interior of eastern roofspace showing door to northern corridor, view to the west
Plate 30.56:	Building 30 – attic floor: artefacts recovered from beneath rockwool insulation
Plate 30.57:	Building 30 – ground floor: reshaped window opening and earlier paint decoration in northwest room, view to the northeast
Plate 30.58:	Building 30 – ground floor: detail of wallpaper and dado recovered from behind 1820s sash box
Plate 30.59:	Building 30 – ground floor: exposed floor structure in northwest room
Plate 30.60:	Building 30 – ground floor: blocked openings to former wardrobes in northeast room
Plate 30.61:	Building 30 – ground floor: detail of floor joist showing EH stamp in end
Plate 31.1:	Building 31 – general view showing chain-link enclosure and gate, view to the southwest
Plate 31.2:	Building 31 – gated entrance to compound from Infirmary Walk, view to the west
Plate 31.3:	Building 31 – eastern elevation, view to the southwest
Plate 31.4:	Building 31 – detail of original exterior door
Plate 31.5:	Building 31 – southern extension, view to the northwest
Plate 31.6:	Building 31 – north elevation, view to the southwest
Plate 31.7:	Building 31 – western elevation, view to the southeast
Plate 31.8:	Building 31 – eastern elevation, view to the northwest
Plate 31.9:	Building 31 – southern elevation, view to the north
Plate 31.10:	Building 31 - ground floor: stair hall, view to the west
Plate 31.11:	Building 31 – ground floor: interior of former kitchen, view to the southwest
Plate 31.12:	Building 31 - ground floor: former dining room in southwest corner of original house, view to the north
Plate 31.13:	Building 31 - ground floor: former living room in southeast corner of original house, view to the east
Plate 31.14:	Building 31 - ground floor: staircase showing murals, view to the north
Plate 31.15:	Building 31 - ground floor: inserted corridor between dining and sitting

	room leading to southern extension, view to the south
Plate 31.16:	Building 31 - ground floor: west side of extension, view to the north
Plate 31.17:	Building 31 - ground floor: interior of children's bathroom, view to the east
Plate 31.18:	Building 31 - ground floor: first floor landing, view to the southeast
Plate 31.19:	Building 31 - first floor: refurbished bathroom, view to the southwest
Plate 31.20:	Building 31 - first floor: principal bedrooms, view to the west
—————	—————
Plate 32.1:	Building 32 - western elevation, view to the north
Plate 32.2:	Building 32 - interior of first floor plant room, view to the southeast
Plate 32.3:	Building 32 - main kitchen area showing central cooking area, view to the west
Plate 32.4:	Building 32 - main kitchen area showing prep areas, view to the west
Plate 32.5:	Building 32 - plating room, view to the west
Plate 32.6:	Building 32 - cold store, view to the east
—————	—————
Plate 33.1:	Building 33 - roof showing plan form and relationship to the southwest corner tower of the main Infirmary, view to the west
Plate 33.2:	Building 33 - view between the southwest corner tower (left) and subject building, view to the east
Plate 33.3:	Building 33 - northern elevation of western part, view to the southwest
Plate 33.4:	Building 33 - northern elevation showing blocked entrance in western part, view to the southwest
Plate 33.5:	Building 33 - northern elevation of eastern part, view to the southeast
Plate 33.6:	Building 33 - original signage on door to western part
Plate 33.7:	Building 33 - interior of western part, view to the east
Plate 33.8:	Building 33 - typical lavatory cubicle, view to the north
Plate 33.9:	Building 33 - interior of northern part, view to the north
Plate 33.10:	Building 33 - interior of northern part, view to the southwest
Plate 33.11:	Building 33 - detail of original light switch in eastern part, view to the north
—————	—————
Plate 34.:1	Building 34 - North elevation, view to the southeast
Plate 34.2:	Building 34 - roof, view to the southwest
Plate 34.3:	Building 34 - detail of entrance to the western part, view to the south
Plate 34.4:	Building 34 - detail of window in the western part, view to the south
Plate 34.5:	Building 34 - detail of entrance to the eastern part, view to the south

Plate 34.6:	Building 34 – detail of air brick in the western part, view to the south
Plate 34.7:	Building 34 – interior of western part view to the northeast
Plate 34.8:	Building 34 – detail of c.1950s roof light
Plate 34.9:	Building 34 – interior of the eastern part, view to the south
Plate 34.10:	Building 34 – detail showing roof vent in eastern part
Plate 34.11:	Building 34 – detail of vent in south wall, view to the south
Plate 34.12:	Building 34 – detail of closable vent in the northern wall, view to the north
Plate 34.13:	Building 34 – detail of c.1930s light switch, view to the northwest
—————	—————
Plate 35.1:	Building 35 – general view of northern elevation, view to the southwest
Plate 35.2:	Building 35 – north elevation of western part, view to the southeast
Plate 35.3:	Building 35 – roof light on flat roof of western part, view to the south
Plate 35.4:	Building 35 – interior, view to the southeast
Plate 35.5:	Building 35 – northern elevation of the eastern part, view to the southeast
Plate 35.6:	Building 35 – southern hip to the roof of the eastern part, view to the west
Plate 35.7:	Building 35 – detail of entrance to the eastern part, view to the south
Plate 35.8:	Building 35 – interior of eastern part showing architrave to entrance, view to the north
Plate 35.9:	Building 35 – internal partition, view to the southwest
Plate 35.10:	Building 35 – southern room of eastern part, view to the east
Plate 35.11:	Building 35 – detail of roof structure in eastern part, view to the northeast
Plate 35.12:	Building 35 – view of fireplace following demolition of the building, view to the east
—————	—————
Plate 36.1:	Building 36 – general view of north elevation, view to the southeast
Plate 36.2:	Building 36 – roof, view to the southwest
Plate 36.3:	Building 36 – eastern elevation showing truncated buttresses, view to the southwest
Plate 36.4:	Building 36 – detail of original vent in eastern elevation, view to the west
Plate 36.5:	Building 36 – easternmost part of southern elevation, view to the north
Plate 36.6:	Building 36 – westernmost part of southern elevation, view to the northwest

Plate 36.7:	Building 36 – southern elevation showing 20 th century insertion of concrete foundation for fire escape, view to the northeast
Plate 36.8:	Building 36 – entrance in northern elevation showing steps to elevated floor level, view to the southeast
Plate 36.9:	Building 36 – interior, view to the southeast
Plate 36.10:	Building 36 – detail of roof structure, view to the southwest
Plate 36.11:	Building 36 – detail of closable vent in east side, view to the southeast
—————	—————
Plate 37.1:	Building 37 – view of roof showing relationship to surrounding structures, view to the southwest
Plate 37.2:	Building 37 – north end of west elevation, view to the southeast
Plate 37.3:	Building 37 – west elevation, view to the south
Plate 37.4:	Building 37 – south elevation, view to the northeast
Plate 37.5:	Building 37 – detail of makers badge on south elevation
Plate 37.6:	Building 37 – east elevation, view to the north
Plate 37.7:	Building 37 – general view of interior, view to the north
—————	—————
Plate 38.1:	Building 38 – west elevation
Plate 38.2:	Building 38 – internal corridor along the west side looking into Building 24f, view to the north
Plate 38.3:	Building 38 – detail of Bakelite switches, view to the north
Plate 38.4:	Building 38 – detail of Bakelite bulb holder, view to the southwest
—————	—————
Plate 39.1:	Building 39 – general view to the southwest
Plate 39.2:	Building 39 – detail of Castle Street elevation showing change in fabric, view to the southwest
Plate 39.3:	Building 39 – detail of ‘Hardy and Padmore’ electricity box cover, view to the south
Plate 39.4:	Building 39 – southern elevation
Plate 39.5:	Building 39 – general view of western elevation from Infirmary steps, view to the northeast
Plate 39.6:	Building 39 – western elevation from terrace on Building 41
Plate 39.7:	Building 39 – lower ground floor plant room, view to the southeast
Plate 39.8:	Building 39 – upper ground floor main corridor, view to the east
Plate 39.9:	Building 39 – upper ground floor typical consulting room, view to the southeast
Plate 39.10:	Building 39 – upper ground floor typical lab/ prep area, view to the

	northeast
Plate 39.11:	Building 39 - upper ground floor typical signage
Plate 39.12:	Building 39 - lower ground floor internal staircase, view to the northwest
Plate 39.13:	Building 39 - lower ground floor principal corridor, view to the east
Plate 39.14:	Building 39 - sound studio in speech therapy department, view to the southeast
Plate 39.15:	Building 39 - lower ground floor eastern corridor view to the south
Plate 39.16:	Building 39 - lower ground floor plant room, view to the east
—————	—————
Plate 40.1:	Building 40 - north elevation, view to the southeast
Plate 40.2:	Building 40 - detail of centrepiece on north elevation
Plate 40.3:	Building 40 - detail of tablet in centrepiece
Plate 40.4:	Building 40 - detail of foundation stone in centrepiece
Plate 40.5:	Building 40 - left hand flanking wing of north elevation, view to the southwest
Plate 40.6:	Building 40 - right hand flanking wing of north elevation, view to the southeast
Plate 40.7:	Building 40 - eastern part of southern elevation, view to the northeast
Plate 40.8:	Building 40 - western part of the north elevation, view to the northwest
Plate 40.9:	Building 40 - lower ground floor - entrance to the central corridor from Building 41, view to the east
Plate 40.10:	Building 40 - lower ground floor - outpatients buffet [Room 0.32], view to the north
Plate 40.11:	Building 40 - lower ground floor - buffet wash-up area, view to the south
Plate 40.12:	Building 40 - lower ground floor - typical consulting room [Room 0.27], view to the south
Plate 40.13:	Building 40 - lower ground floor - typical fittings [Room 0.24], view to the north
Plate 40.14:	Building 40 - lower ground floor - clean utility room [Room 0.39] showing 2 types of windows, view to the north
Plate 40.15:	Building 40 - lower ground floor - inserted passage [Room 0.37] showing glazed partition, view to the east
Plate 40.16:	Building 40 - lower ground floor - interior of examination room [Room 0.36] showing partition across window, view to the north
Plate 40.17:	Building 40 - lower ground floor - detail of relocated door handle in

	Room 0.36
Plate 40.18:	Building 40 – upper ground floor – corridor leading from Rushout Ward, view to the southwest
Plate 40.19:	Building 40 - upper ground floor – north – south corridor along western end, view to the north
Plate 40.20:	Building 40 - upper ground floor – main east – west corridor [Room 1.5], view to the east
Plate 40.21:	Building 40 - upper ground floor –typical southern room [Room 1.4], view to the southeast
Plate 40.22:	Building 40 - upper ground floor – office [Room 1.1] at east end, view to the northwest
Plate 40.23:	Building 40 - upper ground floor –splint room [Room 1.8] showing oculus windows, view to the northwest
Plate 40.24:	Building 40 - upper ground floor – detail of oculus window, view to the north
Plate 40.25:	Building 40 - upper ground floor – interior of roofspace showing rooflight over western flanking range
—————	—————
Plate 41.1:	Building 41 – northern elevation
Plate 41.2:	Building 41 – detail of former main entrance, view to the southeast
Plate 41.3:	Building 41 – limited view of the western gable, view to the southeast
Plate 41.4:	Building 41 – detail of George VI post box in northern elevation
Plate 41.5:	Building 41 – general view of the interior showing inserted mezzanine, view to the west
Plate 41.6:	Building 41 - general view of the interior from mezzanine, view to the east
Plate 41.7:	Building 41 – former street entrance enclosure and inserted offices below mezzanine, view to the northeast
Plate 41.8:	Building 41 – south wall showing openings to Infirmary, view to the south
Plate 41.9:	Building 41 – detail of typical pilaster head, view to the south
Plate 41.10:	Building 41 – entrance to the dermatology department., view to the south
Plate 41.11:	Building 41 – outpatient buffet counter, view to the east
Plate 41.12:	Building 41 – inserted office beneath mezzanine showing blocked door, view to the northeast
Plate 41.13:	Building 41 – detail of plaque in later office, view to the south

Plate 41.14:	Building 41 – stairs to mezzanine, view to the northwest
Plate 41.15:	Building 41 – mezzanine floor, view to the east
Plate 41.16:	Building 41 – mezzanine office showing blocked window, view to the north
Plate 41.17:	Building 41 – mezzanine floor frosted coloured Perspex panels, view to the south
Plate 41.18:	Building 41 – mezzanine floor, view to the east
Plate 41.19:	Building 41 – mezzanine floor (west end), view to the south
Plate 41.20:	Building 41 – ground floor - dispensary counter, view to the west
Plate 41.21:	Building 41 – ground floor - dispensary, view to the northeast
Plate 41.22:	Building 41 – ground floor - office store looking through to Building 48, view to the west
Plate 41.23:	Building 41 – ground floor - corridor along south showing opening through original Infirmary wall to Room 61, view to the southeast
Plate 41.24:	Building 41 – corridor along south, view to the east
Plate 41.25:	Building 41 – Room 53 showing blocked opening to connecting corridor for northwest corner tower and chimney stack, view to the south
=====	=====
Plate 42.1:	Building 42 – General view of gates to the principal entrance from Infirmary Walk, view to the southwest
Plate 42.2:	Building 42 – General view of railings to the south of the principal entrance
Plate 42.3:	Building 42 – detail of gate piers, view to the southwest
Plate 42.4:	Building 42 – detail of southern gate pier, view to the southeast
Plate 42.5:	Building 42 – detail of pedestrian gate to the north side, view to the west
Plate 42.6:	Building 42 – detail of boss in pedestrian gate
Plate 42.7:	Building 42 – detail of lock in pedestrian gate
Plate 42.8:	Building 42 – detail of lower ironwork in pedestrian gate
Plate 42.9:	Building 42 – detail of railings to south of gates, view to the southwest
=====	=====
Plate 43.1:	Building 43 – east elevation, view to the southwest
Plate 43.2:	Building 43 – roof, view to the south
Plate 43.3:	Building 43 – detail of centrepiece on east elevation
Plate 43.4:	Building 43 – detail of doorcase to principal entrance
Plate 43.5:	Building 43 – detail of foundation stone in principal elevation

Plate 43.6:	Building 43 – detail of original door bell in principal elevation
Plate 43.7:	Building 43 – detail of low level windows in principal elevation
Plate 43.8:	Building 43 – north elevation, view to the southeast
Plate 43.9:	Building 43 – detail of basement entrance on north elevation
Plate 43.10:	Building 43 – detail of lancet window in west side of basement porch, view to the east
Plate 43.11:	Building 43 – basement window to the east of the porch, view to the southeast
Plate 43.12:	Building 43 - basement window to the west of the porch, view to the south
Plate 43.13:	Building 43 – detail of former bell pull rebate to west of basement door, view to the southeast
Plate 43.14:	Building 43 – western elevation
Plate 43.15:	Building 43 – detail of centrepiece to western elevation
Plate 43.16:	Building 43 – side door on the left of the western elevation
Plate 43.17:	Building 43 – south elevation
Plate 43.18:	Building 43 – ground floor: entrance hall showing formerly blocked opening to the north range and entrance basement, view to the north
Plate 43.19:	Building 43 – ground floor: entrance hall, view to the south
Plate 43.20:	Building 43 – ground floor: detail of terrazzo in around foot of stairs, view to the east
Plate 43.21:	Building 43 – ground floor: detail of later strengthening to staircase
Plate 43.22:	Building 43 – ground floor: basement stairs, view to the north
Plate 43.23:	Building 43 – ground floor: lobby around principal western entrance, view to the northeast
Plate 43.24:	Building 43 – ground floor: lounge area showing surviving fireplace, view to the south
Plate 43.25:	Building 43 – ground floor: detail of skirting in lounge, living room and sitting rooms
Plate 43.26:	Building 43 – ground floor: living room showing blocked fireplace
Plate 43.27:	Building 43 – ground floor: corridor along south side of northern range, view to the north
Plate 43.28:	Building 43 – ground floor: typical details of former bedrooms in northern range, view to the northwest
Plate 43.29:	Building 43 – ground floor: typical original door and overlight to bedrooms in north and south ranges
Plate 43.30:	Building 43 – ground floor: eastern central bedroom in north range

	showing off centre window, view to the north
Plate 43.31:	Building 43 – ground floor: inserted doorway to eastern central bedroom fitted with reproduction door, view to the south
Plate 43.32:	Building 43 – ground floor: detail of standard skirting
Plate 43.33:	Building 43 – ground floor: entrance to southern wing showing wide opening to store room, view to the south
Plate 43.34:	Building 43 – ground floor: kitchen area formerly bathroom, adjacent to the entrance hall, view to the east
Plate 43.35:	Building 43 - ground floor: corridor along north side of southern range, view to the south
Plate 43.36:	Building 43 – ground floor: detail of early 20 th century ideal radiator at west end of corridor, view to the south
Plate 43.37:	Building 43 – ground floor: central room in southern range showing surviving fireplace without surround, view to the southeast
Plate 43.38:	Building 43 – ground floor: detail of historic paintwork and skirting preserved beneath later fire surround, view to the east
Plate 43.39:	Building 43 – ground floor: inserted partitions in eastern room of southern range, view to the southeast
Plate 43.40:	Building 43 – ground floor: interior of bathroom in eastern room of southern range showing historic pelmet, view to the east
Plate 43.41:	Building 43 – basement: entrance hall, view to the south
Plate 43.42:	Building 43 – basement: entrance hall, view to the north
Plate 43.43:	Building 43 – basement: hatch over below floor service duct, view to the southwest
Plate 43.44:	Building 43 – basement: detail of balustrade at foot of basement steps, view to the southeast
Plate 43.45:	Building 43 – basement: porters room to the west of the basement entrance hall showing tally window, view to the south
Plate 43.46:	Building 43 – basement: former boiler room, view to the north
Plate 43.47:	Building 43 - basement: former boiler room, view to the north
Plate 43.48:	Building 43 - basement: store room showing former light well in west wall, view to the west
Plate 43.49:	Building 43 - basement: store room, view to the north
Plate 43.50:	Building 43 – first floor: landing showing balustrade return
Plate 43.51:	Building 43 - first floor: part blocked opening to northern range, view to the north
Plate 43.52:	Building 43 - first floor: original opening to southern range, view to the

	south
Plate 43.53:	Building 43 - first floor: laundry room to the south of the stairwell, view to the southeast
Plate 43.54:	Building 43 - first floor: inserted corridor to the west of the central corridor wall showing blocked original openings, view to the north
Plate 43.55:	Building 43 - first floor: typical first floor bedroom in central range, view to the west
Plate 43.56:	Building 43 - first floor: typical door and overlight to rooms on west side of the central range
Plate 43.57:	Building 43 - first floor: southernmost bedroom in central range showing fire escape in lower part of the original doorway, view to the east
Plate 43.58:	Building 43 - first floor: bathroom in central range, view to the east
Plate 43.59:	Building 43 - first floor: detail of historic, possibly original radiator in bathroom of the central range, view to the south
Plate 43.60:	Building 43 - first floor: inserted cupboard on east side of central corridor, view to the east
Plate 43.61:	Building 43 - first floor: eastern bedroom showing line of former corridor and original communal entrance to the W.C., view to the north
Plate 43.62:	Building 43 - first floor: original doorway to central bedroom in southern range showing blocked fireplace beyond, view to the south
Plate 43.63:	Building 43 - first floor: western bedroom in southern range, showing blocked fireplace and former sink surround, view to the south
Plate 43.64:	Building 43 - first floor: corridor in northern range showing rearranged northern end
Plate 43.65:	Building 43 - first floor: eastern bedroom in northern range showing line of former south wall, view to the southeast
Plate 43.66:	Building 43 - first floor: landing showing string and terminal balustrade, view to the west
Plate 43.67:	Building 43 - second floor: landing, view to the north
Plate 43.68:	Building 43 - second floor: stairwell showing high level stairlight
Plate 43.69:	Building 43 - second floor: landing showing original door to bathroom, view to the south
Plate 43.70:	Building 43 - second floor: bathroom in central range showing original vertical pipe box, view to the east
Plate 43.71:	Building 43 - second floor: detail of pipe box, view to the south
Plate 43.72:	Building 43 - second floor: eastern room of southern range showing

	identical alterations to room below, view to the northwest
Plate 43.73:	Building 43 - second floor: southern bedroom of central range showing identical alterations to room below, view to the northwest
Plate 43.74:	Building 43 - roof space: typical roof truss, view to the north
Plate 43.75:	Building 43 - roof space: detail of king post attachment to tie beam
Plate 43.76:	Building 43 - roof space: internal detail of brick formed oculus in pediment, view to the south
—————	—————
Plate 44.1:	Building 44 - general view of northern elevation, view to the southeast
Plate 44.2:	Building 44 - western end, view to the southeast
Plate 44.3:	Building 44 - northern end, view to the southwest
Plate 44.4:	Building 44 - original drainage goods, view to the south
Plate 44.5:	Building 44 - detail of rainwater hopper
Plate 44.6:	Building 44 - general view of carriageway, view to the west
Plate 44.7:	Building 44 - general view of carriageway, view to the west
Plate 44.8:	Building 44 - interior of arch No 8 from the east, view to the north
Plate 44.9:	Building 44 - detail of arch structure, view to the north
Plate 44.10:	Building 44 - detail of blocking wall, view to the northeast
Plate 44.11:	Building 44 - detail of joint between Butts Siding (right) and viaduct , view to the northwest
—————	—————
Plate 45.1:	Building 45 - southern extremity of pre 1897 boundary wall backed by Building 9, view to the southwest
—————	—————
Plate 46.1:	Building 46 - northern extremity of wall as part of Building 36 to the north, view to the north
Plate 46.2:	Building 46 - southern elevation showing concrete insert for fire escape support, view to the north east
Plate 46.3:	Building 46 - southern face to south of Building 35 showing concrete insert for fire escape, view to the northwest
Plate 46.4:	Building 46 -capping of wall between Buildings 35 (left) and 49, view to the east
Plate 46.5:	Building 46 - capping of wall between Buildings 49 (left) and 35/ 23, view to the east
Plate 46.6:	Building 46 - north elevation between buildings 13 (left) and 12.
—————	—————
Plate 47.1:	Building 47: Castle Street elevation 01

Plate 47.2:	Building 47: Castle Street elevation 02
Plate 47.3:	Building 47: Castle Street elevation 03
Plate 47.4:	Building 47: Castle Street elevation 04
Plate 47.5:	Building 47: Castle Street elevation 05
Plate 47.6:	Building 47: Castle Street elevation 06
Plate 47.7:	Building 47: Castle Street elevation 07
Plate 47.8:	Building 47: Castle Street elevation 08
Plate 47.9:	Building 47: Castle Street elevation 09
Plate 47.10:	Building 47: hospital elevation 01
Plate 47.11:	Building 47: hospital elevation 02
Plate 47.12:	Building 47: hospital elevation 03
Plate 47.13:	Building 47: hospital elevation 04
Plate 47.14:	Building 47: hospital elevation 05
Plate 47.15:	Building 47: hospital elevation 06
—————	—————
Plate 48.1	Building 48: northern part, view to the northeast
Plate 48.2:	Building 48: southern part, view to the east
Plate 48.3:	Building 48: detail of railings around stairwell to basement
Plate 48.4:	Building 48: east elevation of western part, view to the north
Plate 48.5:	Building 48: northern elevation, view to the east
Plate 48.6:	Building 48: interior of southern part, view to the north
Plate 48.7:	Building 48: interior of northern part, view to the northwest
Plate 48.8:	Building 48: access to northern part, view to the southwest
Plate 48.9:	Building 48: basement – western side showing entrance from stair well, view to the southwest
Plate 48.10:	Building 48: basement – internal north wall, view to the northeast
Plate 48.11:	Building 48: basement – detail of north wall showing infilled arch
Plate 48.12:	Building 48: basement – detail of brickwork following partial removal of blocking, view to the north
Plate 48.13:	Building 48: basement – general interior, view to the northeast
Plate 48.14:	Building 48: basement – interior of main eastern part, view to the southeast
Plate 48.15:	Building 48: basement – view of boiler exhaust manifold, view to the west
Plate 48.16:	Building 48: basement – coal bunker, view to the north
—————	—————
Plate 49.1:	Building 49 – general view from the green outside Building 27a, view to

	the northwest
Plate 49.2:	Building 49 – roof, view to the southwest
Plate 49.3:	Building 49 – interior of northern dining area, view to the southwest
Plate 49.4:	Building 49 – interior of southern dining area, view to the northwest
Plate 49.5:	Building 49 – interior of southern dining area, view to the southwest



Plate 1: Aerial view of hospital site (2006)



Plate 1.1: Building 1 – northern and western elevations



Plate 1.2: Building 1 – western elevation



Plate 1.3: Building 1 – southern elevation



Plate 1.4: Building 1 – eastern elevation against Building 4



Plate 1.5: Building 1 – interior, view to the southwest



Plate 1.6: Building 1 – detail of pad stone for metal roof truss



Plate 1.7: Building 1 – detail of switches



Plate 2.1: Building 2 – southern and western elevations



Plate 2.2: Building 2 – western elevation



Plate 2.3: Building 2 – eastern elevation



Plate 2.4: Building 2 – interior of southern part, view to the south west



Plate 2.5: Building 2 – detail of window handle



Plate 2.6: Building 2 – detail of roof bracket



Plate 2.7: Building 2 – detail of coat hook by entrance



Plate 3.1: Building 3 – southern and eastern elevation (taken from B.27b)



Plate 3.2: Building 3 – northern and eastern elevation



Plate 3.3: Building 3 – western elevation



Plate 3.4: Building 3 – detail of typical window



Plate 3.5: Building 3 – typical interior, view to the north



Plate 3.6: Building 3 – detail of internal roof structure, view to the northeast



Plate 3.7: Building 3 – detail of internal door



Plate 3.8: Building 3 – detail of typical die-cast window handle



Plate 4.1: Building 4 – southern and eastern elevations



Plate 4.2: Building 4 – southern and western elevations



Plate 4.3: Building 4 – interior of western part



Plate 5.1: Building 5 – eastern and northern elevations (taken from B.6)



Plate 5.2: Building 5 – western elevation



Plate 5.3: Building 5 – eastern elevation



Plate 5.4: Building 5 – northern elevation during demolition



Plate 5.5: Building 5 – interior of lavatory, view to the southeast



Plate 5.6: Building 5 – interior of washroom, view to the east



Plate 6.1: Building 6 – Eastern elevation



Plate 6.2: Building 6 – northern elevation



Plate 6.3: Building 6 – western elevation



Plate 6.4: Building 6 – southern elevation



Plate 6.5: Building 6
- external store



Plate 6.6: Building 6
- detail of typical
window



Plate 6.7: Building 6 – detail of emergency electricity isolation switch



Plate 6.8: Building 6 – interior of southern extension, view to the east



Plate 6.9: Building 6 – interior of former southernmost workshop, view to the southeast



Plate 6.10: Building 6 – interior of former southernmost workshop, view to the southwest



Plate 6.11: Building 6 – interior of former central workshop, view to the southwest



Plate 6.12: Building 6 – interior of former central workshop, view to the northeast



Plate 6.13: Building 6 – detail of 1950 'Vent-Axia' fan, former central workshop



Plate 6.14: Building 6 – interior of northernmost workshop showing blocked central door, view to the north



Plate 6.15: Building 6 – detail of 1950s 'Univectair' heater unit, northern workshop



Plate 6.16: Building 6 – detail of makers plate on heater unit, northern workshop



Plate 6.17: Building 6 – roof trusses over former southernmost workshop, view to the southeast



Plate 6.18: Building 6 – detail showing original metal purlins (right) and later purlins over central and northern workshops, view to the east



Plate 6.19: Building 6 – detail of wall between former southern workshop and remainder of building showing former bowed roof, view to the southeast



Plate 7.1: Building 7 – eastern elevation



Plate 7.2: Building 7 – northern elevation



Plate 7.3: Building 7 – western elevation



Plate 7.4: Building 7 – southern elevation showing generator room



Plate 7.5: Building 7 – Interior of southern lab showing air con unit, view to the east



Plate 7.6: Building 7 – interior of typical room showing plastic ducting, view to the east



Plate 7.7: Building 7 – plant room on roof, view to the east



Plate 7.8: Building 7 – interior of generator room, view to the northeast



Plate 7.9: Building 7 – detail of amp metre in generator room

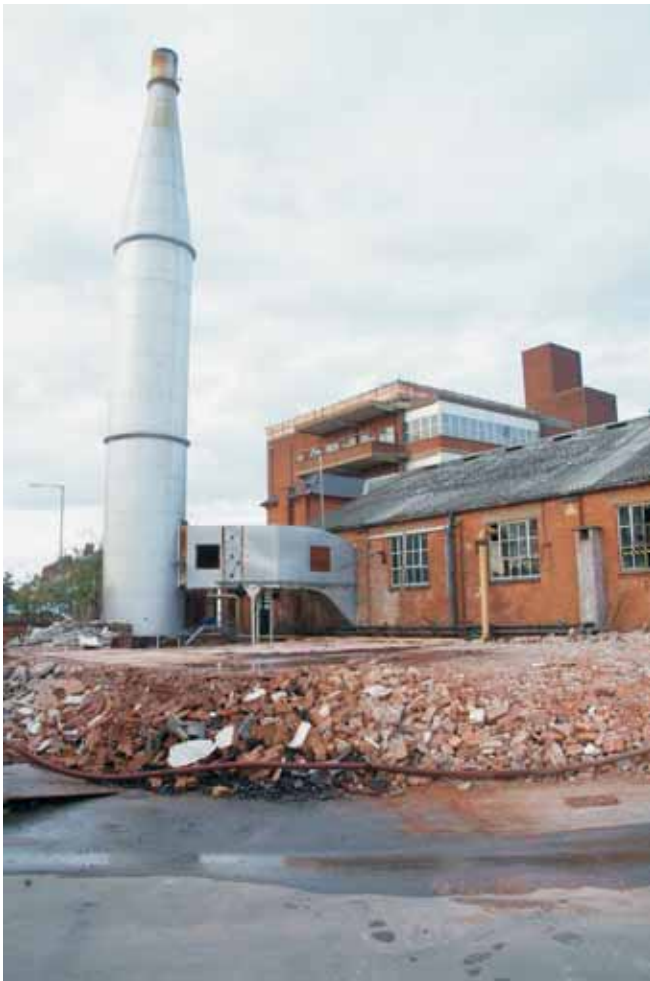


Plate 8.1: Building 8 – view to the north following the demolition of Building 7



Plate 9.1: Building 9 – southern and eastern elevations



Plate 9.2: Building 9 – interior showing mains riser, view to the west



Plate 10.1: Building 10 – east side, view to the northwest



Plate 10.2: Building 10 – southern end of the eastern elevation, view to the east



Plate 10.3: Building 10 – northern end of the east elevation, view to the south



Plate 10.4: Building 10 – northern and eastern elevations, view to the south west



Plate 10.5: Building 10 – northern elevation



Plate 10.6: Building 10 – western elevation



Plate 10.7: Building 10 – western elevation following the demolition of Building 7



Plate 10.8: Building 10 – west side of southern elevation



Plate 10.9: Building 10 – east side of (upper) southern elevation



Plate 10.10: Building 10 – east side of (lower) southern elevation



Plate 10.11: Building 10 – southern elevation following demolition of Building 25



Plate 10.12: Building 10 – ancillary store and steps to elevated water tank to the south east of main building, view to the southeast



Plate 10.13: Building 10 – interior of main shed, view to the south



Plate 10.14: Building 10 – coal bins along the southern wall, view to the west



Plate 10.15: Building 10 – northeast entrance to main shed showing partitioned workshop/ stores, view to the east



Plate 10.16: Building 10 – detail of roof trusses



Plate 10.17: Building 10 – detail of high level window in main shed, view to the west



Plate 10.18: Building 10 – interior of northern range, view to the northeast



Plate 10.19: Building 10 – interior of workshop in eastern range, view to the north



Plate 10.20: Building 10 – interior of mess room in eastern range, view to the south



Plate 10.21: Building 10 – detail of window handle in eastern range, view to the north



Plate 11.1: Building 11 and 12 – view to the southeast showing structures in relation to Building 18 (far left), Building 26 (behind) and Building 10 (far right)



Plate 11.2: Building 11 – north and west elevations



Plate 11.3: Building 11 – north and east elevations



Plate 11.4: Building 11 – interior showing water softener, view to the east



Plate 12.1: Building 12 – south elevation following the partial demolition of the single storey range



Plate 12.2: Building 12 – south and west elevation



Plate 12.3: Building 12 – interior showing ladder to water tank, view to the south



Plate 13.1: Building 13 – View east along the western access road showing the northern and western elevations



Plate 13.2: Building 13 – principal entrance on the northern elevation, view to the east



Plate 13.3: Building 13 – basement door in western elevation, view to the east



Plate 13.4: Building 13 - southern elevation showing earlier wall at base, view to the north



Plate 13.5: Building 13 – interior of basement, view to the west



Plate 13.6: Building 13 – interior of westernmost ground floor room, view to the west



Plate 13.7: Building 13 – interior of eastern ground floor room showing later partition, view to the west



Plate 13.8: Building 13 – detail of window handle in eastern room, view to the northwest



Plate 13.9: Building 13 – Interior of ground floor showing connecting door to Building 14, view to the east



Plate 14.1: Building 14 – northern and eastern elevations



Plate 14.2: Building 14 – northern elevation (western end)



Plate 14.3: Building 14
– detail of typical original
window, view to the south



Plate 14.4: Building 14 –
eastern side of central
gabled projection showing
blocked door, view to the
west



Plate 14.5: Building 14 – detail of rebate and drip moulding in central gable, view to the southwest



Plate 14.6: Building 14 – eastern wing showing modified windows, view to the southeast



Plate 14.7: Building 14 – eastern elevation above the roof of Building 15a



Plate 14.8: Building 14 – western elevation following demolition of Building 13



Plate 14.9: Building 14 – southern elevation showing proximity of Building 15 (partly demolished, view to the north east



Plate 14.10: Building 14 – entrance corridor from Building 13, view to the northeast



Plate 14.11: Building 14 – female WC, view to the east



Plate 14.12: Building 14 – western seminar room, view to the northwest



Plate 14.13: Building 14 – original showing blocked fireplace (Right) and original door (left), view to the southeast



Plate 14.14: Building 14 – detail of original doorway in partition between west wing and central range, view to the northeast



Plate 14.15: Building 14 – central seminar room showing interior of gabled projection, view to the north

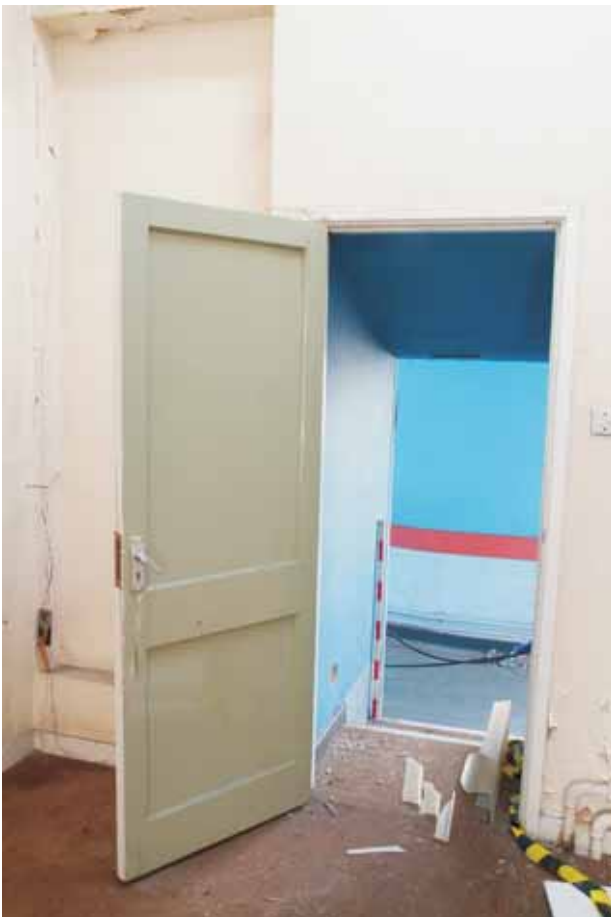


Plate 14.16: Building 14 – two inserted doorways in south elevation looking through to Building 15, view to the southeast



Plate 14.17: Building 14 – detail of metal framed pivoting window in north elevation, view to the north



Plate 14.18: Building 14 – detail of metal framed casement in south elevation, view to the southeast



Plate 14.19: Building 14 – detail showing timber framed window in southern elevation, view to the southwest



Plate 14.20: Building 14 – interior of room in east wing showing tiled floor, view to the north



Plate 14.21: Building 14 – interior of easternmost room, view to the north



Plate 14.22: Building 14 – interior of eastern wall showing inserted doorway, view to the southeast



Plate 14.23: Building 14 – detail of original ceiling boarding, view up



Plate 14.24: Building 14 – detail of historic roof light, view up



Plate 14.25: Building 14 – detail demonstrating difference between original and later roof lights, view to the southeast



Plate 15.1: Building 15 – roof and south elevation against rear of Building 14



Plate 15.2: Building 15 and 15a – roof, view to the south



Plate 15.3: Building 15 – interior of north-south section showing doors to western access road, view to the northwest



Plate 15.4: Building 15 – interior of north-south section showing doors to kitchens (B.24c), view to the northeast



Plate 15.5: Building 15 – interior of east-west section, view to the west



Plate 15.6: Building 15a –northern elevation



Plate 15.7: Building 15a – interior, view to the south



Plate 15.8: Building 15a – interior, view to the north



Plate 16.1: Building 16 – southern elevation, view to the northeast



Plate 16.2: Building 16 – southern and eastern elevations



Plate 16.3: Building 16 – eastern elevation above Building 15



Plate 16.4: Building 16 – roof showing later extension to the left, view to the southeast



Plate 16.5: Building 16 – typical ground floor room, view to the northeast



Plate 16.6: Building 16 – typical first floor consulting room, view to the south



Plate 16.7: Building 16 – typical first floor store, view to the south



Plate 16.8: Building 16 – interior of first floor male WC, view to the south



Plate 16.9: Building 16 – detail of original door with viewing panel and Bakelite signage, view to the south



Plate 16.10: Building 16 –detail of original door handle



Plate 16.11: Building 16 –interior of third floor extension, view to the southwest



Plate 17.1: Building 17a – east elevation



Plate 17.2: Building 17a –north elevation (right)



Plate 17.3: Building 17a – west elevation



Plate 17.4: Building 17a – roof, view to the northwest



Plate 17.5: Building 17a – exposed north wall of E – W link corridor, view to the southeast



Plate 17.6: Building 17a – flat roof of E – W link corridor with stair/ lift tower in background, view to the west



Plate 17.7: Building 17a – south elevation of stair tower



Plate 17.8: Building 17b – visible remnants of the VD Clinic showing northern lavatory wing and change in brickwork above ground floor, view to the southwest



Plate 17.9: Building 17b – visible remnants of the VD Clinic showing western lavatory wing and change in brickwork above ground floor, view to the southeast



Plate 17.10: Building 17b – visible remnants of the VD Clinic showing western lavatory wing change in brickwork above ground floor and between ground floor extension, view to the northeast



Plate 17.11: Building 17b – northern elevation of post 1938 building, view to the east



Plate 17.12: Building 17b – c.1960s infill block against the east side of the N – S link corridor, view to the southwest



Plate 17.13: Building 17b – half glazed extension over two storey flat roofed range, view to the northeast



Plate 17.14: Building 17a – c.1960s balconies on southern elevation, view to the southeast



Plate 17.15: Building 17a – basement: 1938 doorcase and overhead at entrance to N-S link corridor, view to the northeast



Plate 17.16: Building 17a – basement: 1938 parquet flooring of N-S link corridor, view to the north



Plate 17.17: Building 17a – basement:
1938 swing doors within the central
corridor, view to the south



Plate 17.18: Building 17a – basement: tiled post mortem room, view to the south



Plate 17.19: Building 17a – basement: tiled mortuary (body store), view to the southwest



Plate 17.20: Building 17a – basement: physiotherapy department showing wall bars, view to the north



Plate 17.21: Building 17a – ground floor: E – W link corridor showing opening ceremony plaque and original doors, doorcase and overlight, view to the west



Plate 17.22: Building 17a – ground floor: detail of opening plaque, view to the north



Plate 17.23: Building 17a – ground floor: E – W link corridor showing formerly external lancet windows of the chapel, view to the northeast



Plate 17.24: Building 17a – ground floor: detail of typical original corridor window, view to the northeast



Plate 17.25: Building 17a – ground floor: detail showing original southern chapel facade beneath the brickwork of the corridor, view to the north



Plate 17.26: Building 17a – ground floor: interior of lavatories showing original period fixtures, fittings and decor, view to the east



Plate 17.27: Building 17a – ground floor: detail of original door fittings



Plate 17.28: Building 17a – ground floor: detail of original sluice sink fittings



Plate 17.29: Building 17a – ground floor: refurbished treatment rooms, view to the east



Plate 17.30: Building 17a – second floor: general view along central corridor, view to the south



Plate 17.31: Building 17a – second floor: central corridor looking through to the preparation/ sterilizing room, view to the north



Plate 17.32: Building 17a – second floor: detail of gas supply controls to operating theatres



Plate 17.33: Building 17a – second floor: door from the sterilizing room to Theatre 1 with laser warning sign above, view to the west



Plate 17.34: Building 17b – basement: interior of original consulting room within the VD clinic showing original door, view to the north



Plate 17.35: Building 17b – basement: original external window on south side of VD Clinic from within former male changing room, view to the south



Plate 17.36: Building 17b – basement: detail of original 1936 window catch



Plate 17.37: Building 17b – basement: former window opening on south side of VD Clinic enlarged to access 1938 extension, view to the northeast



Plate 17.38: Building 17b – ground floor: hopper-light windows on the south side of link corridor between 17a and 1938 extension to 17b, view to the southeast



Plate 17.39: Building 17b – ground floor: floor and skirting detail at entrance to link corridor between 17a and 1938 extension to 17b, view to the southwest



Plate 17.40: Building 17b – ground floor: floor and skirting detail at entrance to office within 1938 extension to 17b, view to the south



Plate 17.41: Building 17b – ground floor: coved cornice within changing room, view to the north



Plate 17.42: Building 17b – ground floor: original doors to changing rooms, view to the north



Plate 17.43: Building 17b – first floor: original doors between link corridor and main block, view to the south



Plate 17.44: Building 17b – second floor: original metal partitions within the children's ward, view to the north



Plate 17.45: Building 17b – second floor: interior of 1960s extension on south side of main block, view to the west



Plate 17.46: Building 17b – first floor: interior of surgeons changing room in 1960s extension to east side of 17a link corridor, view to the east



Plate 17.47: Building 17a – second floor: later openings on east side of link corridor accessing 1960s extension (note the change in floor level), view to the northeast



Plate 17.48: Building 17b –first floor: extended window openings on west elevation accessing balcony, view to the northeast



Plate 18.1: Building 18 – north (principal) elevation



Plate 18.2: Building 18 – detail of stone cornice, view to the southwest



Plate 18.3: Building 18 – detail of entrance facade and flanking lancets, view to the south



Plate 18.4: Building 18 – east elevation



Plate 18.5: Building 18 – west and south elevation, view to the northeast



Plate 18.6: Building 18 – south elevation



Plate 18.7: Building 18 – detail of eastern closet wing showing vertical joints in brickwork, view to the northwest



Plate 18.8: Building 18 – ground floor: entrance hall, view to the south



Plate 18.9: Building 18 – first floor: gallery and stairwell, view to the north



Plate 18.10: Building 18 – first floor: gallery showing doors to the duty room, view to the south



Plate 18.11: Building 18 – first floor: eastern closet wing, view to the south



Plate 18.12: Building 18 – first floor: western closet wing, view to the south



Plate 18.13: Building 18 – first floor: eastern part of partitioned duty room, view to the northeast



Plate 18.14: Building 18 – corridor inserted into the southeast corner of the west ward, view to the south



Plate 18.15: Building 18 – ground floor: inserted opening in western wall of the stair well, view to the west



Plate 18.16: Building 18 – ground floor: detail showing original west ward skirting beneath inserted steps, view to the northeast



Plate 18.17: Building 18 – ground floor: exposed vousoir of the former opening between the west wing and the duty room, view to the north



Plate 18.18: Building 18 – first floor: southeast corner of west ward showing location of former openings, view to the southeast



Plate 18.19 Building 18 – first floor:
inserted opening from duty room through
to western closet wing, view to the
southwest



Plate 18.20: Building 18 – ground floor: southwest corner of eastern ward showing door to eastern closet and former entrance to duty room, view to the south



Plate 18.21: Building 18 – first floor: southwest corner of eastern ward showing door to eastern closet and former entrance to duty room, view to the south



Plate 18.22: Building 18 – ground floor: east ward following removal of the floor showing traces of brick ducting, view to the northeast



Plate 18.23: Building 18 – ground floor: duct passing beneath the floor of the entrance hall, view to the southwest



Plate 18.24: Building 18 – ground floor: eastern chimney showing stubs of brick ducting projecting from the chambered hearth plinth, view to the northeast



Plate 18.25: Building 18 – ground floor: interior of northern elevation showing openings to vertical shafts below the ground floor, view to the north



Plate 18.26: Building 18 – demolition of lower storey showing plaster lined shafts within the north and east walls, view to the northwest



Plate 18.27: Building 18 – ground floor: main air inlet duct beneath duty room floor, view to the northwest



Plate 18.28: Building 18 – ground floor: detail of controllable grill in skirting board



Plate 18.29: Building 18 – first floor: over-papered vent in ceiling of ward, view up



Plate 18.30: Building 18 – ground floor: detail of double grooved floorboards and metal fillet, view to the southeast



Plate 18.31: Building 18 – basement: exterior of barrel vault, view to the west



Plate 18.32: Building 18 – basement: interior, view to the south



Plate 18.33: Building 18 – basement: interior showing blocked former entrance, view to the west



Plate 18.34: Building 18 – ground floor: foundation walls below floor in western closet wing showing truncated stub wall (left) and formerly external 'blue' brick, view to the northeast



Plate 18.35: Building 18 – first floor: interior of comms room, view to the north



Plate 18.36: Building 18 – first floor: interior of comms room showing lobby area, view to the south



Plate 18.37: Building 18 – first floor: interior of eastern ward showing inserted partition, view to the northwest



Plate 18.38: Building 18 – first floor: east side of partitioned duty room, view to the northwest



Plate 18.39: Building 18 – first floor:
west side of partitioned duty room, view
to the northwest



Plate 18.40: Building 18 – detail of
later opening from duty room to
western closet wing, view to the
southwest



Plate 19.1: Building 19 – general view from first floor of building 18, view to the northwest



Plate 19.2: Building 19 – southern and western elevation showing detail of louvers, view to the northeast



Plate 19.3: Building 19 – passage along north side leading to Building 21



Plate 19.4: Building 19 – interior showing gas bottle racks, view to the west



Plate 20.1: Building 20 – south and east elevations of southern hut



Plate 20.2: Building 20 – south and west elevations of northern hut



Plate 20.3: Building 20 – east elevation of linking range



Plate 20.4: Building 20 – Interior of southern hut showing half glazed partitions, view to the north



Plate 20.5: Building 20 – Interior of northern hut showing lab sink and fume cupboard, view to the northeast



Plate 20.6: Building 20 – detail of effluent scrubber in northern hut, view to the northeast



Plate 20.7: Building 20 – sterilizing equipment in the linking range, view to the south



Plate 20.8: Building 20 – lavatories in the linking range, view to the south



Plate 21.1: Building 21 – south and west elevations



Plate 21.2: Building 21 – north elevation showing interior, view to the south



Plate 22.1: Building 22 – general view westwards showing the chapel following the demolition of Building 17



Plate 22.2: Building 22 – northern elevation



Plate 22.3: Building 22 – southern elevation following the demolition of the link corridor to Building 17a, view to the northeast



Plate 22.4: Building 22 – detail of southern elevation during removal of brick skin (corridor wall), view to the east



Plate 22.5: Building 22 – upper ground floor: later openings in former external southern elevation, view to the northeast



Plate 22.6: Building 22 – upper ground floor: detail of early 20th century hopperlight window, view to the northeast



Plate 22.7: Building 22 – upper ground floor: detail of modified original door in formerly external southern elevation, view to the northeast



Plate 22.8: Building 22 – upper ground floor: detail of early 20th century fittings on modified original door, view to the northwest



Plate 22.9: Building 22 – upper ground floor: interior of modified original door in formerly external southern elevation, view to the south



Plate 22.10: Building 22 – detail of carved head kneeler on northern elevation, view to the southwest



Plate 22.11: Building 22 – detail of nave lancet on northern elevation, view to the southwest



Plate 22.12: Building 22 – original basement windows in southern elevation, view to the northeast



Plate 22.13: Building 22 – half conical roof of apse, view to the east



Plate 22.14: Building 22 – detail of stone wheel-head cross at the apex of the gable parapet, view to the east



Plate 22.15: Building 22 – oculus in eastern elevation (partly obscured by scaffolding), view to the northwest



Plate 22.16: Building 22 – chimney stack at apex of east elevation, view to the northwest



Plate 22.17: Building 22 – nave:
interior, view to the east



Plate 22.18: Building 22 – nave: detail of internal east elevation showing external door hinges, view to the east



Plate 22.19: Building 22 – nave: detail of internal east elevation showing internal door hinges, view to the east



Plate 22.20: Building 22 – nave: detail of moulded corbel cornice and stone corbel block, view to the northwest



Plate 22.21: Building 22 – nave: roof structure, view to the west

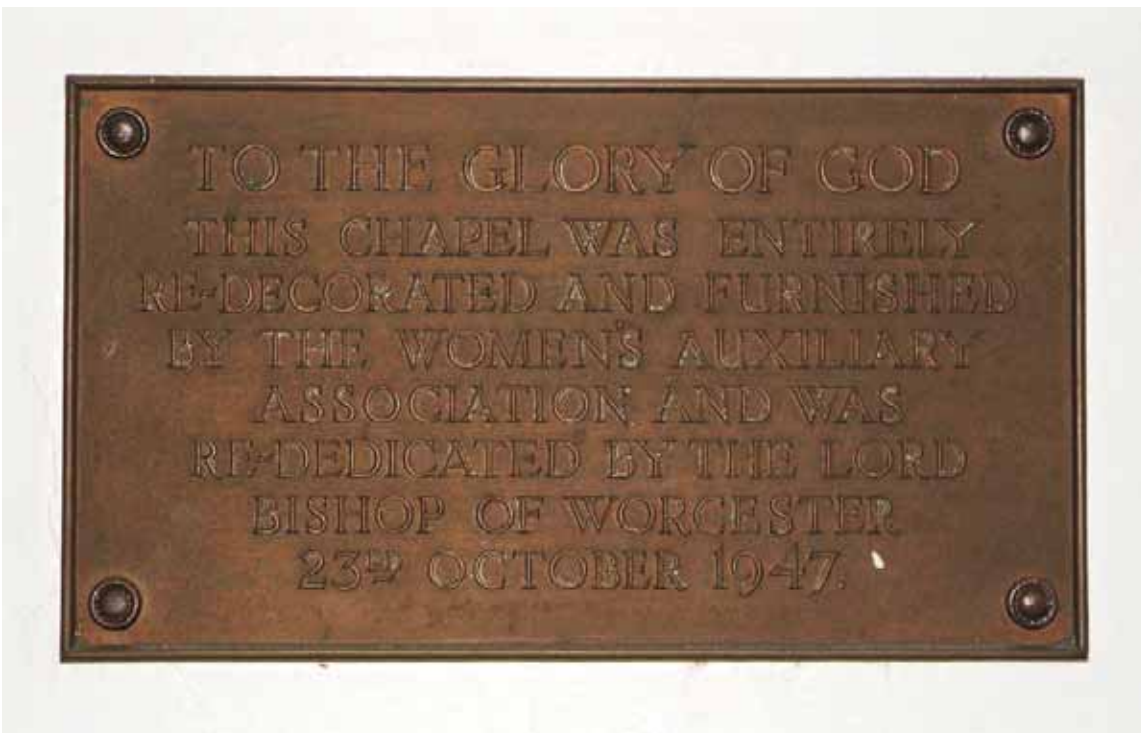


Plate 22.22: Building 22 – nave: detail of commemorative plaque on east wall, view to the east



Plate 22.23: Building 22 – nave: detail of organ pipe case on eastern wall, view to the east



Plate 22.24: Building 22 – nave: detail of eastern oculus window as seen from inside the boardroom of the infirmary, view to the west



Plate 22.25: Building 22 – nave: detail of memorial plaque to Herbert Cole on eastern wall, view to the east

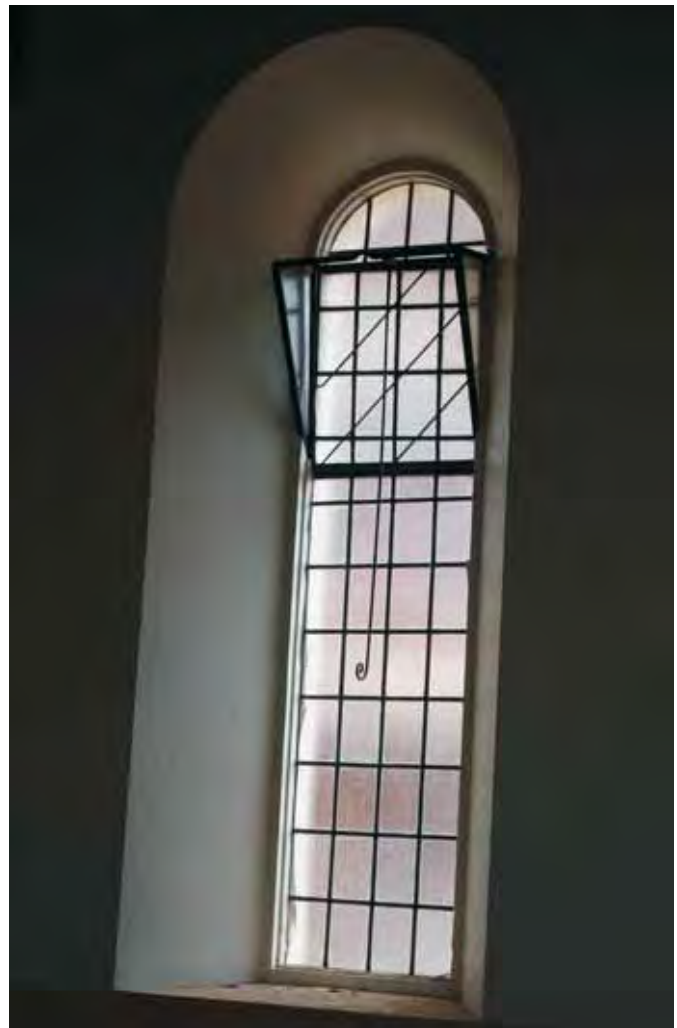


Plate 22.26: Building 22 – nave: detail of typical plain glazed hopper-light window, view to the southeast

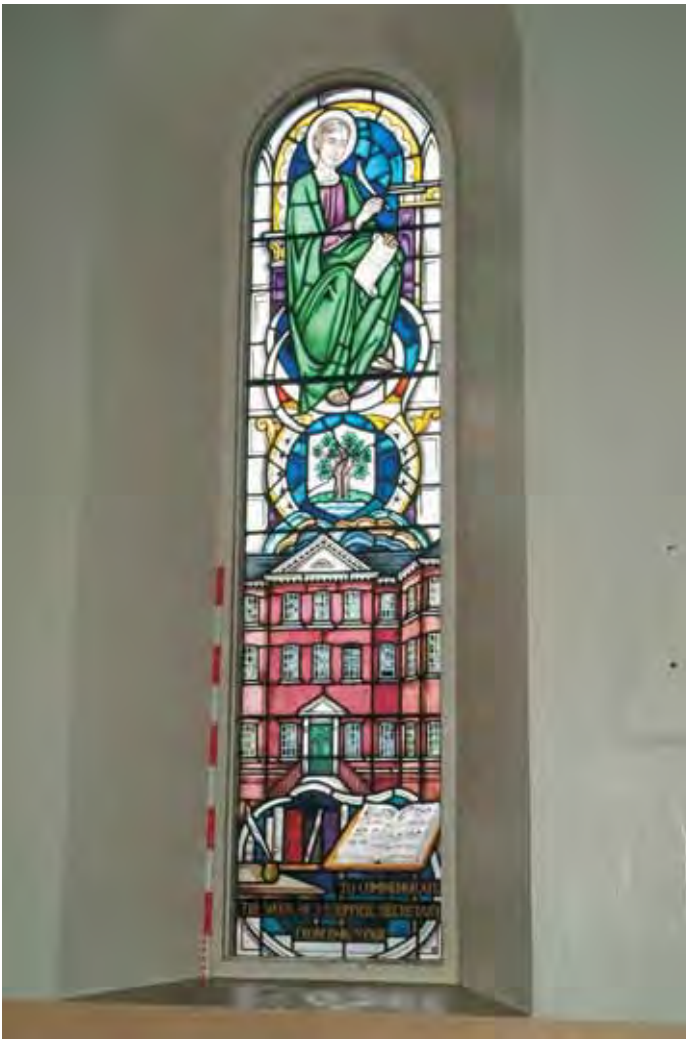


Plate 22.27: Building 22 – nave: detail of purpose made stained glass window on north side, view to the northwest



Plate 22.28: Building 22 – nave: close up of lower part of purpose made stained glass window, view to the north



Plate 22.29: Building 22 – nave: interior showing floor detail, view to the west



Plate 22.30: Building 22 – nave: chancel arch and pulpit at the west end, view to the west



Plate 22.31: Building 22 – chancel: interior showing communion rail, blind arcade and ribs, view to the west



Plate 22.32: Building 22 – chancel: detail of southern window, view to the southwest

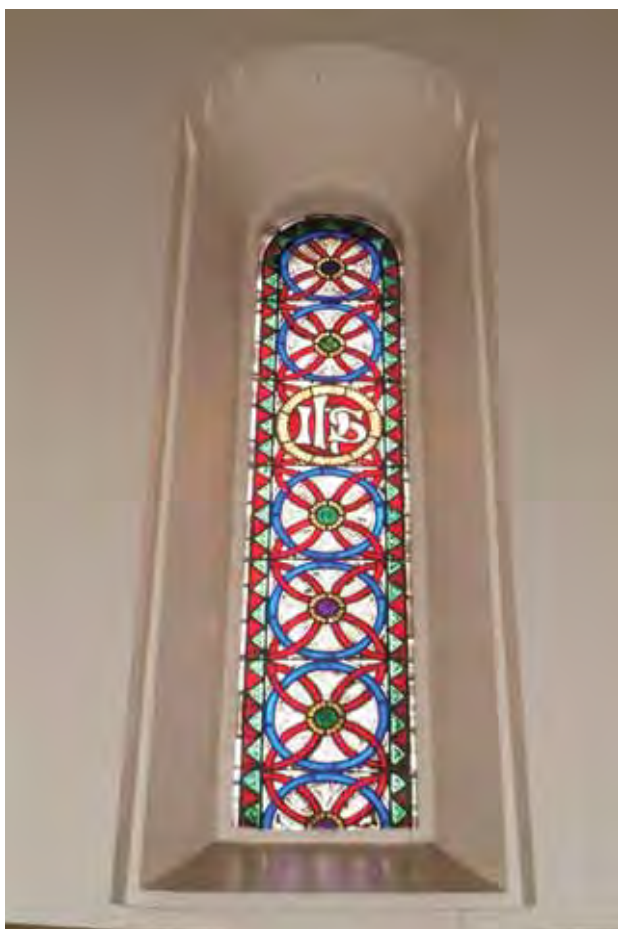


Plate 22.33: Building 22 – chancel: detail of central window, view to the west



Plate 22.34: Building 22 – chancel: detail of northern chancel window, view to the northwest



Plate 22.35: Building 22 – connecting range: central corridor on upper ground floor, view to the west



Plate 22.36: Building 22 – connecting range: central corridor on upper ground floor, view to the east



Plate 22.37: Building 22 – connecting range: central corridor on upper ground floor showing detail of floor tiles, view to the north



Plate 22.38: Building 22 – connecting range: central corridor on upper ground floor showing ceiling detail, view to the east



Plate 22.39: Building 22 – connecting range: central corridor on upper ground floor showing doorway on north side, view to the northwest



Plate 22.40: Building 22 – connecting range: medical library on upper ground floor, view to the north



Plate 22.41 : Building 22 – connecting range: medical library on upper ground floor showing detail of original panelling behind radiator, view to the north



Plate 22.42: Building 22 – connecting range: north – south corridor on upper ground floor, view to the north



Plate 22.43: Building 22 – connecting range: central corridor on lower ground floor as seen from the medical records store in the infirmary, view to the west



Plate 22.44: Building 22 – connecting range: central corridor on lower ground floor looking into central corridor beneath the nave, view to the west



Plate22.45 : Building 22 – connecting range (LGF): opening to the central corridor beneath the nave, view to the west



Plate 22.46: Building 22 – connecting range (LGF): detail of skirting within the central corridor and architrave to the contingency store, view to the southwest



Plate 22.47: Building 22 – connecting range (LGF): door from the central corridor to the 'Contingency Store', view to the southwest



Plate 22.48: Building 22 – connecting range (LGF): door from the Building 17 link corridor to the 'Contingency Store', view to the southeast



Plate 22.49: Building 22 – connecting range (LGF): interior of the 'Contingency Store', view to the west



Plate 22.50: Building 22 – connecting range (LGF): interior of the 'Contingency Store' showing high level blocked window (left), view to the east



Plate 22.51: Building 22 – connecting range (LGF): entrance to the 'ECG Department', view to the south



Plate 22.52: Building 22 – connecting range (LGF): interior of the 'ECG Department', view to the northwest



Plate 22.53: Building 22 – connecting range (LGF): interior of the 'ECG Department' showing early 20th century fittings, view to the northeast



Plate 22.54: Building 22 – connecting range (LGF): interior of the 'ECG Department' showing high level blocked window, view to the southeast



Plate 22.55: Building 22 (LGF): entrance from central corridor to the 'Porter's Rest Room', view south



Plate 22.56: Building 22 (LGF): interior of 'Porter's Rest Room' showing window rebates, view to southeast



Plate 22.57: Building 22 (LGF): interior of 'Porter's Rest Room' showing piers and high level window, view to the northeast



Plate 22.58: Building 22 (LGF): interior of 'Porter's Rest Room', view to the east



Plate 22.59: Building 22 (LGF): interior of 'Porter's Rest Room' showing historic fireplace, view to the east



Plate 22.60: Building 22 (LGF): interior of 'Porter's Rest Room' view to the west



Plate 22.61: Building 22 (LGF): interior of 'Porter's Rest Room' showing high level ducts, view to the north



Plate 22.62: Building 22 (LGF): detail of connecting conduit crossing central corridor and high level window from the 'Porter's Rest Room' view to the west



Plate 22.63: Building 22 (LGF): interior of 'Porters Changing Room' showing entrance from central corridor and high level ducts, view to the south



Plate 22.64: Building 22 (LGF): interior of 'Porter's Rest Room', view to the east



Plate 22.65: Building 22 (LGF): interior of 'Porter's Rest Room' showing detail of inserted doorway in north wall, view to the northwest



Plate 22.66: Building 22 (LGF): interior of 'Porter's Changing Room' showing detail of enlarged window in north wall, view to the northeast



Plate 22.67: Building 22 (LGF): entrance to electricity switch room from the Building 17 link corridor, view to the northwest



Plate 22.68: Building 22 (LGF): interior of southern part of the electricity switch room, view to the east



Plate 22.69: Building 22 (LDF): interior of western part of the electricity switch room, view to the north



Plate 22.70: Building 22 (LGF): interior of southern part of the electricity switch room, view to the west



Plate 22.71: Building 22 (LGF): interior of the transformer room, view to the southeast



Plate 22.72: Building 22 (LGF): interior of the transformer room showing surviving transformer and brick lined sub floor ducting, view to the southwest



Plate 22.73: Building 22 (LGF): interior of transformer room showing modified window, view to the north



Plate 22.74: Building 22 (LGF): interior of northern side of the transformer room showing historic signage, view to the east

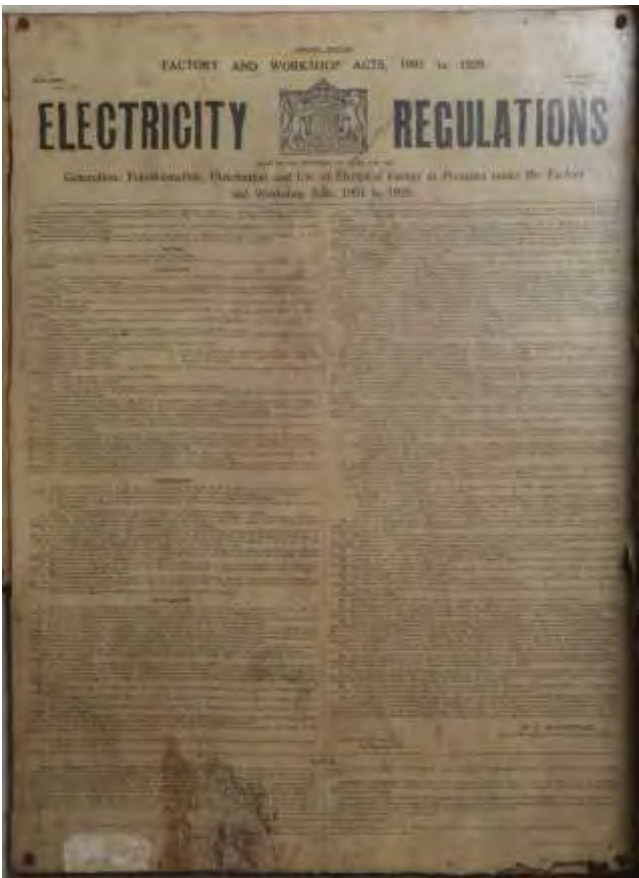


Plate 22.75: Building 22 (LGF): detail of historic sign

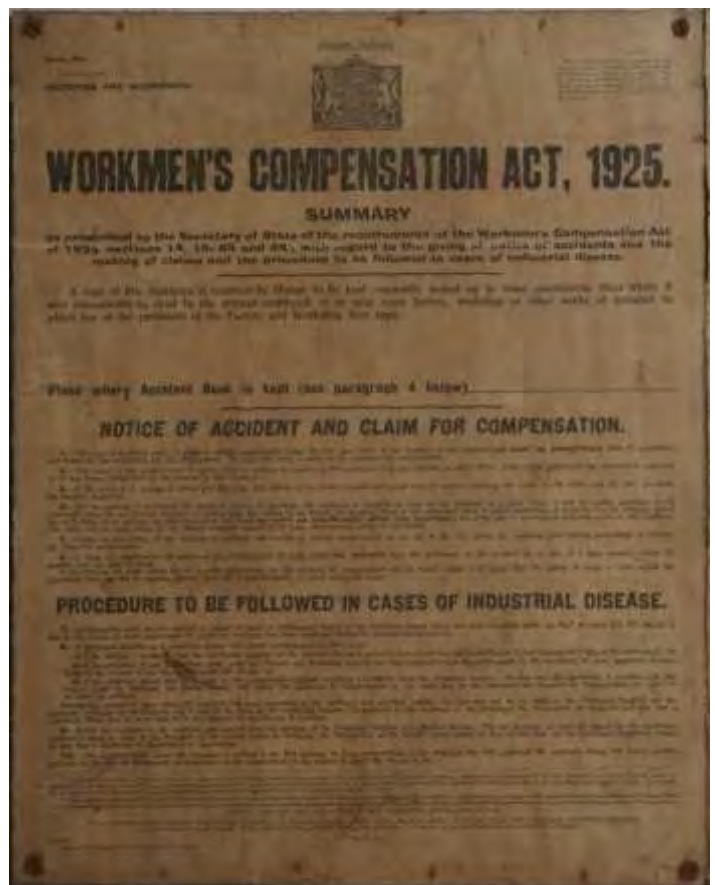


Plate 22.76: Building 22 (LGF): detail of historic sign



Plate 22.77: Building 22 (LGF): interior of apse showing inserted doorway, view to the south



Plate 22.78: Building 22 (LGF): interior of apse showing surviving window opening, view to the north



Plate 22.79: Building 22 (LGF): interior of apse showing former doorway from central aisle, view to the south



Plate 22.80: Building 22 (LGF): interior detail of historic floor tiles (re-laid)



Plate 22.81: Building 22 (LGF):
example of an 'Octopus Furnace' (NOT
FROM THIS SITE)



Plate 23.1: Building 23 - eastern elevation of short N - S corridor at the western end of the structure, view to the northwest



Plate 23.2: Building 23 - exposed western elevation of short N - S corridor at the western end of the structure, view to the east



Plate 23.3: Building 23 - exposed southern elevation of the E - W corridor at the western end of the structure, view to the north



Plate 23.4: Building 23 - exposed western elevation of short N - S corridor at the eastern end of the structure, view to the east



Plate 23.5: Building 23 - exposed eastern elevation of short N - S corridor at the eastern end of the structure, view to the west



Plate 23.6: Building 23 - interior of short N - S corridor at the eastern end of the structure showing rooflight, view to the north



Plate 23.7: Building 23 - interior of the E - W corridor, view to the southwest



Plate 23.8: Building 23 - internal southern elevation of the E - W corridor at the western end of the structure showing pier and blocked opening, view to the southeast



Plate 23.9: Building 23 - internal southern elevation of the E - W corridor showing inserted doorway to Building 32, view to the southeast



Plate 23.10: Building 23 - inserted opening to staff restaurant at east end of the E - W corridor, view to the northeast



Plate 23.11: Building 23 - pilaster on the north wall of the E - W corridor showing location of commemorative plaque, view to the northeast



Plate 23.12: Building 23 - detail of commemorative plaque on internal north elevation



Plate 24.1: Building 24: eastern elevation (2005)



Plate 24.2: Building 24: south eastern wing, view to the southwest (2005)



Plate 24.3: Building 24:
detail of north facing elevation
of SE wing showing point of
extension

Plate 24.4: Building 24:
southeast corner tower (Building
24f), view to the northwest



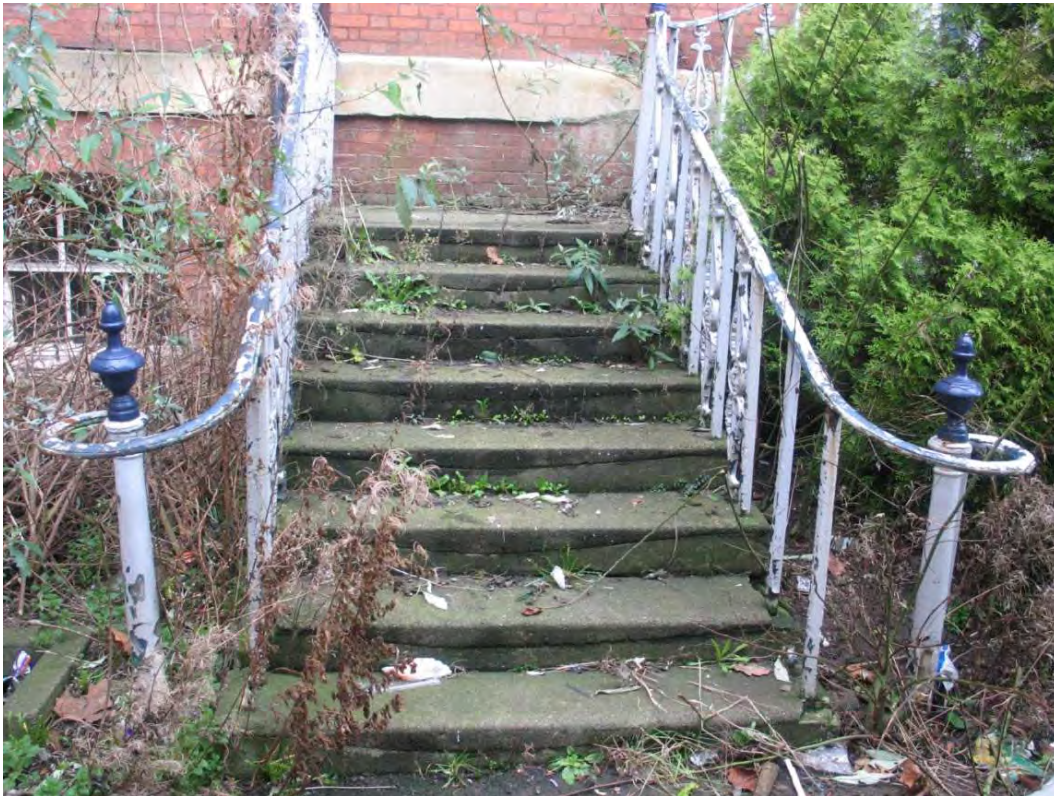


Plate 24.5: Building 24: detail of principal entrance steps, view to the west



Plate 24.6: Building 24: detail showing principal entrance and steps following removal of stone treads, view to the west



Plate 24.7: Building 24: detail showing structure of tread supports, view to the west



Plate 24.8: Building 24: post excavation shot following removal of central tread supporting wall, view to the west



Plate 24.9: Building 24: exterior of barrel vault supporting central platform, view to the northwest



Plate 24.10: Building 24: detail of decorative grill across central oculus, view to the west



Plate 24.11: Building 24: detail showing surviving bead moulding around base of oculus, view to the southwest



Plate 24.12: Building 24: sloping floor inside barrel vault of central platform, view to the south



Plate 24.13: Building 24: enlarged opening through the infirmary wall beneath the central platform, view to the west



Plate 24.14: Building 24: inserted opening in south side of barrel vault



Plate 24.15: Building 24: modern grille across the mouth of the vent, view to the north

Plate 24.16: Building 24: northern wing, view to the west





Plate 24.17: Building 24: north elevation above Building 40



Plate 24.18: Building 24: detail of north western extension (Buildings 24b and 24g) showing vertical and horizontal changes in brickwork



Plate 24.19: Building 24: detail of upper ground floor window in the northern elevation showing hopper light, view to the northwest



Plate 24.20: Building 24: western elevation above the roof of the chapel (Building 22) view to the east



Plate 24.21: Building 24: detail of central part of western elevation showing canted bay, view to the northeast



Plate 24.22: Building 24: detail of left hand part of central western elevation, view to the east



Plate 24.23: Building 24: detail of right hand part of central western elevation, view to the east

Plate 24.24: Building 24: northwest wing, view to the northeast





Plate 24.25: Building 24: southwest wing, view to the southeast



Plate 24.26: Building 24: southern elevation following demolition of buildings to the south, view to the northeast



Plate 24.27: Building 24: southern elevation showing detail of left hand part of lower ground floor, view to the northeast



Plate 24.28: Building 24: southern elevation showing detail of right hand part of lower ground floor, view to the northeast



Plate 24.29: Building 24: southern elevation showing original central doorway

Plate 24.30: Building 24: southern elevation showing detail of point of attachment to the southwest corner tower, view to the northwest





Plate 24.31: Building 24: southern elevation showing detail of graffiti on lower ground floor of western extension (Building 24d), view to the north



Plate 24.32: Building 24: southern elevation showing detail of graffiti on lower ground floor of original building (Building 24a)



Plate 24.33: Building 24: southern elevation showing detail of graffiti on lower ground floor of original building (Building 24a)



Plate 24.34: Building 24: southern elevation showing detail of graffiti on lower ground floor of original building (Building 24a)



Plate 24.35: Building 24: entrance hall, view to the west



Plate 24.36: Building 24: entrance hall, detail of entablature, view to the northeast



Plate 24.37: Building 24:
main north-south corridor, view
to the north



Plate 24.38: Building 24: entrance hall, view to the east



Plate 24.39: Building 24: entrance hall showing detail of modified alcove, view to the northeast



Plate 24.40: Building 24: entrance hall, view to the north



Plate 24.41: Building 24: entrance hall, detail of fireplace, view to the south



Plate 24.42: Building 24:
detail of door to the boardroom,
view to the west

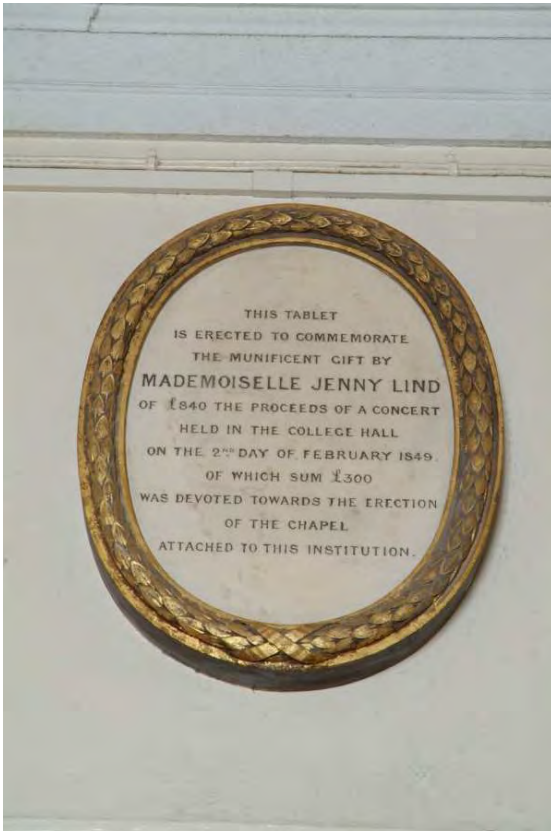


Plate 24.43: Building 24: detail of plaque above boardroom door, view to the west



Plate 24.44: Building 24: boardroom, view to the east



Plate 24.45: Building 24: boardroom, detail of ceiling, view to the east



Plate 24.46: Building 24: boardroom showing fireplace in 2005, view to the northeast



Plate 24.47: Building 24:
boardroom showing fireplace in
2008, view to the north



Plate 24.48: Building 24: boardroom showing southern window, view to the
southeast



Plate 24.49: Building 24: cash office [Room 1.21], view to the east



Plate 24.50: Building 24: cash office [Room 1.21], view to the southeast



Plate 24.51: Building 24: door from central corridor to cash office, view to the west

Plate 24.52: Building 24: northern staircase, view to the west





Plate 24.53: Building 24: comms room [Room 1.19], view to the east



Plate 24.54: Building 24:comms room [Room 1.19], view to the southeast



Plate 24.55: Building 24: comms room [Room 1.19], view to the northwest



Plate 24.56: Building 24: comms room [Room 1.19], view to the northwest



Plate 24.57: Building 24: Room 1.18, view to the east



Plate 24.58: Building 24: Rushout Ward [Room1.11], view to the west



Plate 24.59: Building 24: Rushout Ward [Room 1.11], view to the east



Plate 24.60: Building 24: Rushout Ward [Room 1.11], west end (Building 24b), view to the west



Plate 24.61: Building 24: Rushout Ward [Room 1.11], view to the south



Plate 24.62: Building 24: Rushout Ward [Room 1.11] view to the southwest



Plate 24.63: Building 24: Rushout Ward [Room 1.11] showing detail of riveted beam, view up and to the northwest

Plate 24.64: Building 24: Rushout Ward [Room 1.17] showing closet wing, view to the south





Plate 24.65: Building 24: Rushout Ward [Room 1.12 and 13] showing interior of corner tower, view to the northwest

Plate 24.66: Building 24: Rushout Ward [Room 1.12] showing interior of corner tower, view to the east





Plate 24.67: Building 24: Rushout Ward [Room 1.12] showing corner tower connecting corridor, view to the southeast

Plate 24.68: Building 24: entrance to Visiting Staff Room [Room 1.30], view to the east





Plate 24.69: Building 24: Visiting Staff Room [Room 1.30], view to the north



Plate 24.70: Visiting Staff Room [Room 1.30], view to the east



Plate 24.71: Building 24: Visiting Staff Room [Room 1.30], view to the south



Plate 24.72: Building 24: Visiting Staff Room [Room 1.30], view to the west



Plate 24.73: Building 24: entrance to Room 1.31, view to east

Plate 24.74: Building 24: Room 1.32, view to the east





Plate 24.75: Building 24: Room 1.32, view to the southwest

Plate 24.76: Building 24: corridor and southern lift looking toward the Building 17 link corridor, view to the west





Plate 24.77: Building 24: southern staircase, view to the southwest



Plate 24.78: Building 24: Wheeley Lea Ward [Room 1.35], view to the west



Plate 24.79: Building 24: Wheeley Lea Ward [Room 1.35], view to the east



Plate 24.80: Wheeley Lea Ward [Room 1.35], view to the northwest



Plate 24.81: Building 24: Wheeley Lea Ward [Room 1.35], view up and to the east



Plate 24.82: Building 24: Wheeley Lea Ward [Room 1.35], showing point of eastern extension, view to the southwest



Plate 24.83: Building 24: Wheeley
Lea Ward [Room 1.35] showing
redundant fire exit, view to the
south

Plate 24.84: Building 24: Wheeley
Lea Ward [Room 1.35] showing point
of eastern extension, view to the
west





Plate 24.85: Building 24: Wheeley Lea Ward [Room 1.35] showing interior of corner tower (Building 24g), view to the west



Plate 24.86: Building 24: Wheeley Lea Ward [Room 1.35], showing first floor structure in eastern extension (Building 24f), view to the northeast



Plate 24.87: Building 24: Wheeley Lea Ward [Room 1.35] showing entrance to corner tower, view to the southeast

Plate 24.88: Building 24: Wheeley Lea Ward [Room 1.35] showing interior of corner tower, view to the southeast





Plate 24.89: Building 24 (LGF):
central corridor [Room 90] looking
through the southern entrance, view
to the south

Plate 24.90: Building 24 (LGF):
central corridor [Room 90] from the
south, view to the north





Plate 24.91: Building 24 (LGF): southern stairwell and entrance to kitchen, view to the west

Plate 24.92: Building 24 (LGF): southern lift and entrance to Building 17 link corridor, view to the west





Plate 24.93: Building 24 (LGF): central corridor [Room 90] central section, view to the north

Plate 24.94: Building 24 (LGF): foot of northern stairs, view to the northwest





Plate 24.95: Building 24 (LGF): northern stairwell and entrance to Building 24e, view to the west

Plate 24.96: Building 24 (LGF): central corridor [Room 90] looking toward the northern entrance, view to the north





Plate 24.97: Building 24 (LGF):
entrance to Spire Suite [Room 74],
view to the southwest



Plate 24.98: Building 24 (LGF): nursing staff changing area [Room 109], view to the east



Plate 24.99: Building 24 (LGF): nursing staff changing area [Room 109], view to the southeast



Plate 24.100: Building 24 (LGF): nursing staff changing areas [Room 109], view to the west



Plate 24.101: Building 24 (LGF): nursing staff changing area [Room 109] showing blocked cooking range, view to the northwest



Plate 24.102: Building 24 (LGF): storekeepers room [Room 109], view to the southwest



Plate 24.103: Building 24 (LGF): storekeepers room [Room 109], view to the southeast



Plate 24.104: Building 24 (LGF): entrance to catering office [Room 108], view to the north



Plate 24.105: Building 24 (LGF): catering office [Room 108], view to the northwest



Plate 24.106: Building 24 (LGF): catering office [Room 108], view to the northwest



Plate 24.107: Building 24(LGF): original opening in southern elevation of Building 24f, view to the northeast

Plate 24.108: Building 24 (LGF): later lean-to corridor against southern elevation of Building 24f, view to the west





Plate 24.109: Building 24 (LGF): original opening in base of southeast corner tower, view to the northeast

Plate 24.110: Building 24 (LGF): interior of southeast corner tower looking through inserted opening into Building 8, view to the south





Plate 24.111: Building 24 (LGF): doorway from central corridor through to main kitchens [Room 110], view to the west



Plate 24.112: Building 24 (LGF): southern part of main kitchens, view to the northwest



Plate 24.113: Building 24 (LGF): central part of main kitchens looking towards side entrance, view to the north



Plate 24.114: Building 24 (LGF): former side entrance to kitchens showing supporting arch for the closet wing, view to the north



Plate 24.115: Building 24 (LGF): detail of inserted window in blocking wall across former side entrance to kitchens, view to the north



Plate 24.116: Building 24 (LGF): point of western extension to main kitchens, view to the northwest



Plate 24.117: Building 24 (LGF): former external west wall of extension and doorway to corner tower, view to the west



Plate 24.118: Building 24 (LGF): interior of southwest corner tower showing original external doorway, view to the east



Plate 24.119: Building 24 (LGF): interior of southwest corner tower showing barrel vault, view to the west



Plate 24.120: Building 24 (LGF): 1920s extension to main kitchens, view to the north



Plate 24.121: Building 24 (LGF): interior of northern annex to kitchens [Rom 105], view to the west



Plate 24.122: Building 24 (LGF): covered entrance to southern stairwell of infirmary and entrance to basement, view to the east



Plate 24.123: Building 24 (LGF): stairs to basement, view to the east



Plate 24.124: Building 24 (basement): interior showing barrel ramp, view to the south



Plate 24.125: Building 24 (basement): interior showing stairs and cupboard



Plate 24.126: Building 24 (basement): detail of cupboard door, view to the northeast



Plate 24.127: Building 24 (LGF): interior of Room 103, view to the east



Plate 24.128: Building 24 (LGF): interior of 'Blood Sampling' [Room 102] showing inserted glazed partition, view to the southwest



Plate 24.129: Building 24 (LGF): door to central eastern room [Room 102], view to the east



Plate 24.130: Building 24 (LGF): Room 89 showing inner conduit, view to the east



Plate 24.131: Building 24 (LGF): Room 89, view to the north



Plate 24.132: Building 24 (LGF): Records Store [Room 91] showing entrance to chapel undercroft, view to the west



Plate 24.133: Building 24 (LGF): Records Store [Room 91] showing entrance from central corridor, view to the east



Plate 24.134: Building 24 (LGF): detail of northern original window and blocking of Building 24e [Room 91], view to the north



Plate 24.135: Building 24 (LGF): detail of southern original window and blocking of Building 17 link corridor [Room 91], view to the south



Plate 24.136: Building 24 (LGF): interior of office [Room 88] showing blocked head, view to the west



Plate 24.137: Building 24 (LGF): interior of office [Room 88] showing modified original window, view to the west



Plate 24.138: Building 24 (LGF): interior of enquiries office [Room 86] showing blocked original window



Plate 24.139: Building 24 (LGF): detail of late Victorian chimney piece in enquiries office, view to the south



Plate 24.140: Building 24 (LGF): dermatology department [Room 66] showing inserted glazed partitions, view to the southeast



Plate 24.141: Building 24 (LGF): original windows in examination room [Room 68], view to the southwest



Plate 24.142: Building 24 (LGF): part blocked original window in north wall of examination room [Room 65], view to the northwest



Plate 24.143: Building 24 (LGF): main corridor [Room 74] in Spires Suite showing modern partitioning, view to the east



Plate 24.144: Building 24 (LGF): original openings in west elevation of Building 24b [Room 58], view to the southwest



Plate 24.145 Building 24 (LGF): former original entrance to Building 24b now blocked in Room 72, view to the southwest

Plate 24.146: Building 24 (LGF): late 20th century entrance, lobby and doors to the ECG room in Building 72, view to the southwest





Plate 24.147: Building 24 (LGF): pharmaceutical store [Room 53] in base of northwest corner tower, view to the west

Plate 24.148: Building 24 (LGF): air ducts in modified original window openings, view to the southwest





Plate 24.149: Building 24 (LGF): original (right) and inserted (left) doorways in pharmaceutical store, view to the east



Plate 24.150: Building 24 (LGF): blocked openings in original western elevation of north wing (Building 24a) following soft strip, view to the southeast



Plate 24.151: Building 24 (FF):
central corridor, view to the north

Plate 24.152: Building 24 (FF):
west wall of central corridor showing
commemorative plaque, view to the
southwest





Plate 24.153: Building 24 (FF): detail of commemorative plaque



Plate 24.154: Building 24 (FF): detail of northern lift and surround, view to the northeast



Plate 24.155: Building 24 (FF): part blocked round headed arch in central corridor, view to the north

Plate 24.156: Building 24 (FF): inserted opening in west wall of corridor for Building 17 link corridor and lift, view to the west





Plate 24.157: Building 24 (FF): change in form of balustrade to northern staircase, view to the northwest



Plate 24.158: Building 24 (FF): detail of balustrade above first floor level



Plate 24.159: Building 24 (FF): ward [Room 2.22] over board room showing original windows in canted bay, view to the west



Plate 24.160: Building 24 (FF): north wall of ward [Room 2.22] showing blocked fireplace and typical remodelled doorway, view to the northeast



Plate 24.161: Building 24 (FF): interior of ward [Room 2.18] showing original window, view to the west



Plate 24.162: Building 24 (FF): general view along Garlick Ward, view to the east



Plate 24.163: Building 24 (FF): general view along Garlick Ward, view to the west



Plate 24.164: Building 24 (FF): inserted 1940s partitions at west of Garlick Ward, view to the southwest



Plate 24.165: Building 24 (FF): west end of Garlick Ward showing short window (right), original window (left) and mis-aligned entrance to tower closet, view to the northwest



Plate 24.166: Building 24 (FF): detail of typical sill in northwest corner tower



Plate 24.167 Building 24 (FF): east end of Garlick Ward showing inserted entrance to utility store room [Room 2.11], view to the south



Plate 24.168: Building 24 (FF):
interior of utility store room,
showing inserted door to
relatives room, view to the
southeast



Plate 24.169: Building 24 (FF):
interior of 'Relatives Room' showing
original window, view to the
northeast

Plate 24.170: Building 24 (FF):
interior of 'Relatives Room' showing
blocked fireplace, view to the
northwest





Plate 24.171: Building 24 (FF): interior of shower room showing later partitions, view to the northeast

Plate 24.172: Building 24 (FF): southern part of central corridor showing inserted doorway (left) to sluice room [Room 2.24 and 25], view to the southeast





Plate 24.173: Building 24 (FF): interior of Room 2.24 showing inserted partitions and openings (right), view to the east



Plate 24.174: Building 24 (FF): interior of sluice room, view to the southeast



Plate 24.175: Building 24 (FF): inserted opening between Room 2.25 and ward [Room 2.26], view to the south



Plate 24.176: Building 24 (FF): interior of ward [Room 2.26] showing blocked fireplace, view to the south

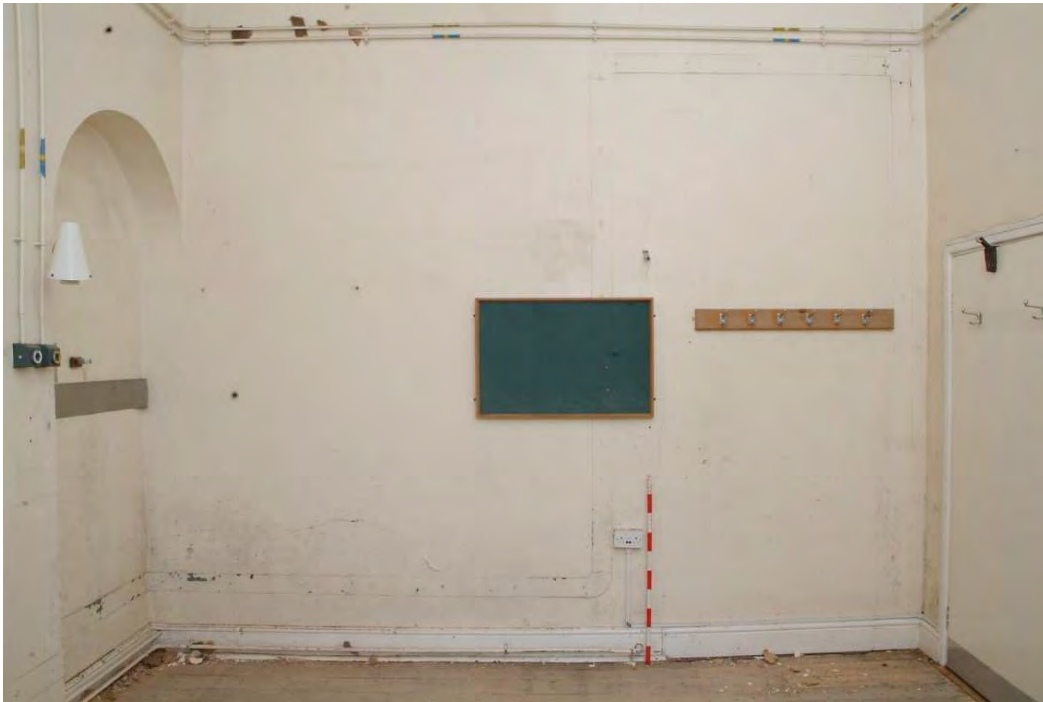


Plate 24.177: Building 24 (FF): west wall of ward [Room 2.26] showing blocked door, view to the south



Plate 24.178: Building 24 (FF): south end of central corridor showing door to store room [Room 2.21] and Ganderton Ward, view to the southeast



Plate 24.179: Building 24 (FF): Ganderton Ward [Room 2.34], view to the east



Plate 24.180: Building 24 (FF): detail showing brass stop cock opening in floor



Plate 24.181: Building 24 (FF): exposed joist carrying 3rd floor over closet wing opening, view to the southwest



Plate 24.182: Building 24 (FF): western end of Ganderston Ward showing inserted partitions, view to the west



Plate 24.183: Building 24 (FF): exposed original ceiling of the southwest corner tower, view up



Plate 24.184: Building 24 (FF): eastern end of Ganderton Ward showing modified windows, view to the southeast



Plate 24.185: Building 24 (SF):
central corridor, view to the south

Plate 24.186: Building 24 (SF):
central corridor, view to the north





Plate 24.187: Building 24 (SF): top of northern staircase, view to the northwest



Plate 24.188: Building 24 (SF): false ceiling over northern stairwell, view to the northwest



Plate 24.189: Building 24 (SF): historic roof structure following removal of false ceiling over northern stairwell, view to the northwest



Plate 24.190: Building 24 (SF): top of southern staircase, view to the southwest



Plate 24.191: Building 24 (SF): area around southern lift, view to the west



Plate 24.192: Building 24 (SF): central western room showing subdivision, view to the west



Plate 24.193: Building 24 (SF): entrance to the Maddox Ward, view to the north



Plate 24.194: Building 24 (SF): subdivision of the eastern part of Maddox Ward, view to the southeast



Plate 24.195: Building 24 (SF): easternmost area of Maddox Ward, view to the north



Plate 24.196: Building 24 (SF): western part of the Maddox Ward, view to the west



Plate 24.197: Building 24 (SF):
inserted fire escape doors in west of
Maddox Ward, view to the south

Plate 24.198: Building 24 (SF):
closet wing in original form, view to
the east





Plate 24.199: Building 24 (SF): ceramic conduit in roof above closet wing, view to the east



Plate 24.200: Building 24 (SF): cowl on roof above the closet wing, view to the northeast



Plate 24.201: Building 24 (SF): western part of Maddox Ward showing entrance to closet wing, view to the north

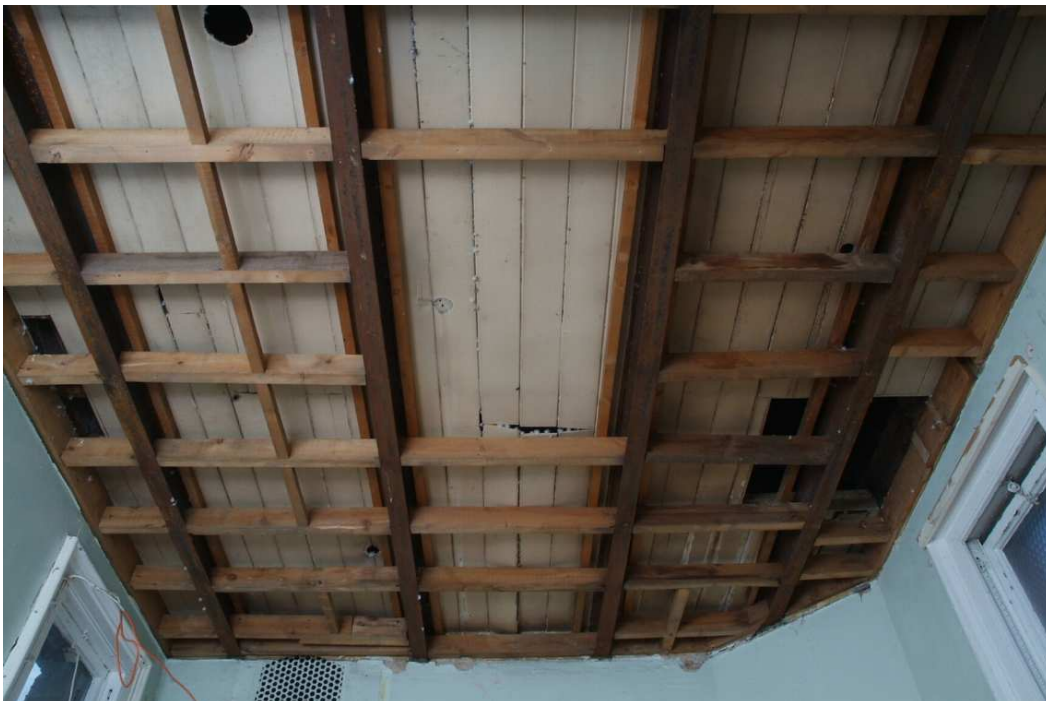


Plate 24.202 Building 24 (SF): ceiling of northwest closet wing showing inserted steel joists, view to the west



Plate 24.203: Building 24 (SF): detail of chalked inscription on steel joists, view to the south



Plate 24.204: Building 24 (SF): central eastern room showing subdivision, view to the southeast



Plate 24.205: Building 24 (SF): inserted opening in the east wall of the central corridor and north wall of Room 3.24, view to the southeast



Plate 24.206: Building 24 (SF): general view of Bonaker Ward, view to the east



Plate 24.207: Building 24 (SF): general view of Bonaker Ward, view to the west



Plate 24.208: Building 24 (SF): inserted opening in the north wall of the Bonaker Ward, view to the northwest



Plate 24.209: Building 24 (SF): inserted fire escape doors in south wall of Bonaker Ward, view to the south

Plate 24.210: Building 24 (SF): interior of southeast corner tower, view to the south





Plate 24.211: Building 24 (SF):
lathe and plaster lining to roof of the
southeast corner tower, view to the
northwest



Plate 24.212: Building 24 (SF): structure of roof apex over southeast corner
tower



Plate 24.213: Building 24 (SF): western part of Bonaker Ward showing subdivision and entrance to the southwest corner tower, view to the southwest



Plate 24.214: Building 24 (SF): interior of southwest corner tower showing lavatory partitions, view to the southwest



Plate 24.215: Building 24 (Roof Structure): former tank support structure in central part of roof, view to the southwest



Plate 24.216: Building 24 (Roof Structure): lathe and plaster chamber in roof west of centre



Plate 24.217: Building 24 (Room Structure): chimney showing extension, view to the south



Plate 24.218: Building 24 (Room Structure): former steps to roof access dormer, view to the west



Plate 24.219: Building 24
(Roof Structure): internal lead
rainwater hopper and pipe, view
to the west



Plate 25.1: Building 25: general view of coal conveyor from the southwest



Plate 25.2: Building 25: shipping container doors at the south eastern end



Plate 25.3: Building 25: interior, view to the northwest



Plate 25.4: Building 25: detail of floor bars and lugs, view to the northwest



Plate 25.5: Building 25: hydraulic reservoir and pump beneath the conveyor, view to the east

Plate 25.6: Building 25: interior of bunded tank showing conveyor trestles, view to the north





Plate 25.7: Building 25: foundation slabs for former oil storage tanks showing discarded screw, view to the south

Plate 25.8: Buildings 25: apertures in lower part of boiler house southern elevation, view to the northwest





Plate 26.1: Building 26: exposed southern elevation, view to the north



Plate 26.2: Building 26: flat roof, view to the north



Plate 26.3: Building 26: detail of crenulated parapet, view to the northwest



Plate 26.4: Building 26: view of terrace into which the building was set, view to northeast



Plate 26.5: Building 26: ambulance bay, view to east



Plate 26.6: Building 26: detail of ambulance turntable, view to southwest

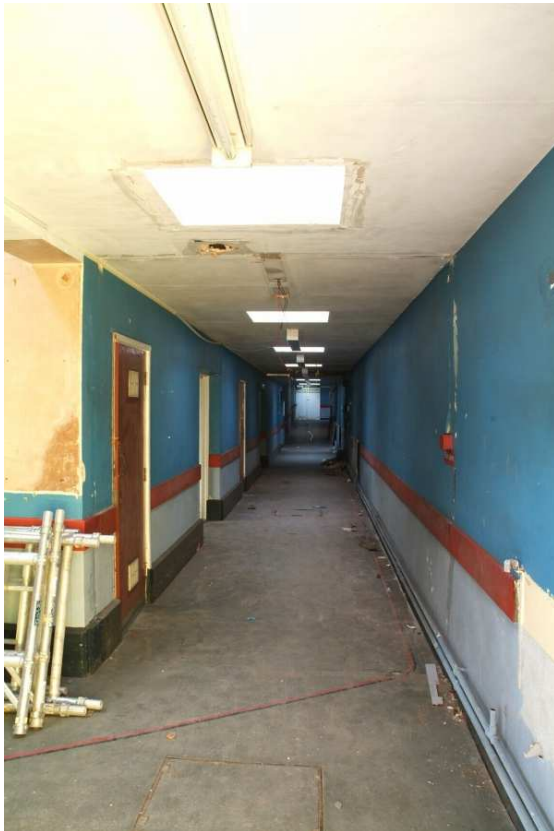


Plate 26.7: Building 26: principal eastern corridor, view to the north



Plate 26.8: Building 26: typical level of survival of fittings, view to the northwest

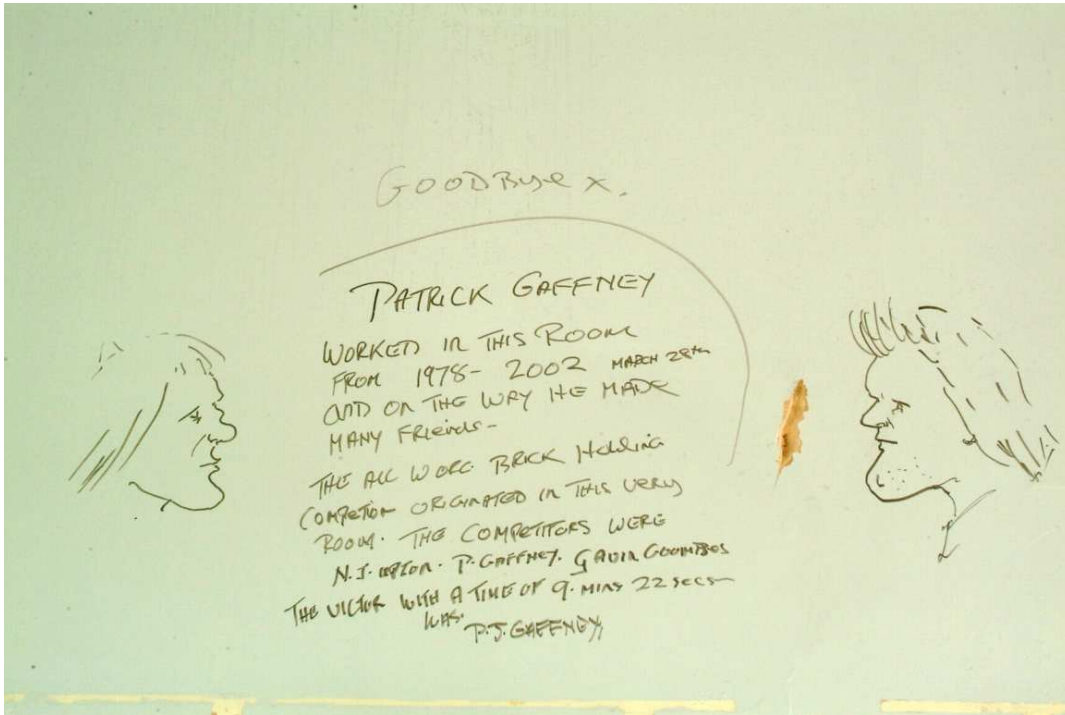


Plate 26.9: Building 26: graffiti left by departing staff in plaster room, view to the north



Plate 26.10: Building 26: original doors fitted to the pedestrian entrance, view to the northwest



Plate 26.11: Building 26: children's ward, view to the north



Plate 26.12: Building 26: triage area showing assessment cubicles, view to the east



Plate 26.13: Building 26: interior of plaster room showing plaster mixer (right) and light box, view to the west



Plate 27.1 : Building 27a – eastern elevation from across the green



Plate 27.2 : Building 27a – detail of central part of eastern elevation



Plate 27.3 : Building 27a – detail of principal entrance

Plate 27.4: Building 27a – northern entrance on eastern elevation, view to the southwest





Plate 27.5: Building 27a - southern entrance on eastern elevation, view to the northwest

Plate 27.6: Building 27a – northern elevation, view to the southeast





Plate 27.7: Building 27a – southern elevation, view to the northeast



Plate 27.8: Building 27a – detail showing underside of the elevated corridor, view to the north



Plate 27.9 : Building 27a - western elevation



Plate 27.10: Building 27a – western elevation of the southern wing



Plate 27.11: Building 27a - western elevation of the northern wing



Plate 27.12: Building 27a - detail of typical rainwater head, view to the southwest



Plate 27.13: Building 27a – ground floor:
principal corridor, view to the north

Plate 27.14: Building 27a – ground floor:
main entrance hall, view to the southeast





Plate 27.15: Building 27a – ground floor: inner doors of principal entrance



Plate 27.16: Building 27a – ground floor: porch of principal entrance, view to the west



Plate 27.17: Building 27a – eastern side of entrance hall showing reduced opening to stair hall, view to the west



Plate 27.18: Building 27a – ground floor: central staircase, view to the southeast



Plate 27.19: Building 27a – ground floor: interior of toilet block to the north of the principal entrance, view to the east



Plate 27.20: Building 27a – ground floor: sister's sitting room, view to the northwest



Plate 27.21 : Building 27a – ground floor: detail of 'Wellington' fireplace within sister's sitting room, view to the north



Plate 27.22: Building 27a – ground floor: example of invitation found behind fire surround in the sister's sitting room

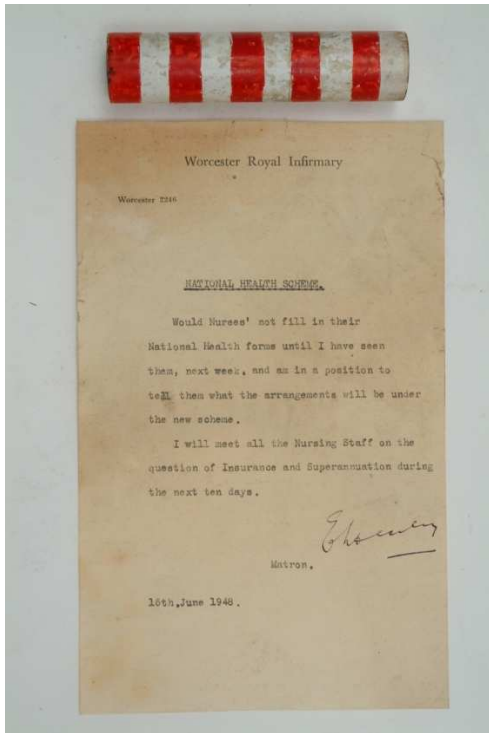


Plate 27.23: Building 27a – ground floor:
NHS internal note found behind fire surround
in the sister's sitting room



Plate 27.24: Building 27a – ground floor: nurses' sitting room, view to the southwest



Plate 27.25: Building 27a – ground floor: typical room to the north of the entrance hall, view to the north



Plate 27.26: Building 27a - ground floor: detail of original fireplace in the northern wing



Plate 27.27: Building 27a - basement: interior of domestic staff room at north end of basement, view to the northwest



Plate 27.28: Building 27a - basement: detail of original door, view to the north



Plate 27.29: Building 27a - basement: original part glazed partition, view to the southwest



Plate 27.30: Building 27a - basement: former domestic laundry room, view to the west



Plate 27.31: Building 27a – basement: nurse's accommodation, view to the southwest



Plate 27.32: Building 27a – second floor: typical nurse's room, view to the southwest



Plate 27.33 : Building 27a - second floor:
original bathroom partitions, view to the
northwest

Plate 27.34: Building 27a - first floor:
linen storage cupboards, view to the
northwest





Plate 27.35: Building 27a - second floor: central corridor, view to the south



Plate 27.36: Building 27a - second floor: detail of original door, view to the west



Plate 27.37: Building 27a - second floor: detail of original sink, view to the south



Plate 27.38: Building 27a - second floor: detail of original toilet, view to the northwest



Plate 27.39: Building 27a - second floor:
detail of original toothbrush holder, view to
the west



Plate 27.40: Building 27a - second floor: detail of original linoleum, view to the northwest



Plate 27.41: Building 27b – northeast elevation showing ground floor connecting corridor from building 27a

Plate 27.42 : Building 27b – detail of principal entrance treatment to connecting corridor





Plate 27.43: Building 27b – southeast elevation at east end of building, view to the northwest



Plate 27.44: Building 27b – southern elevation, view to the west



Plate 27.45: Building 27b – southern elevation of western cross range showing fire escape, view to the northwest



Plate 27.46: Building 27b – western elevation of cross range



Plate 27.47: Building 27b – west end of northern elevation, view to the south



Plate 27.48: Building 27b – northern elevation showing west side of elevated corridor, view to the east



Plate 27.49: Building 27b – detail of eastern side of elevated corridor



Plate 27.50: Building 27b – ground floor: interior of connecting corridor leading from the principal entrance to the building, view to the southeast



Plate 27.51: Building 27b – ground floor:
principal staircase at eastern end, view to
the northeast

Plate 27.52: Building 27b – ground
floor: inserted lift, view to the north





Plate 27.53: Building 27b – ground floor:
principal central corridor, view to the east

Plate 27.54: Building 27b – ground floor:
central corridor of western cross wing,
view to the north





Plate 27.55: Building 27b – ground floor: storage cupboard with original door, view to the southwest



Plate 27.56: Building 27b – ground floor: typical modified bedroom, view to the southeast



Plate 27.57: Building 27b – ground floor:
converted bedroom and store room, view
to the south

Plate 27.58: Building 27b – ground
floor: original bathroom suite and tiling,
view to the south





Plate 27.59: Building 27b – lower ground floor: archive shelves in former cinema, view to the west



Plate 27.60: Building 27b – lower ground floor: eastern wall of archive room showing blocked projection aperture



Plate 27.61: Building 27b – lower ground floor: interior of projector room, view to the west



Plate 27.62: Building 27b – lower ground floor: loading bay and mezzanine at western end, view to the northwest



Plate 27.63: Building 27b – first floor: interior of elevated corridor looking from Building 27a, view to the south

Plate 27.64: Building 27b – first floor: termination of western staircase at first floor level, view to the east





Plate 27.65: Building 27b – first floor:
interior of lift, view to the north

Plate 27.66: Building 27b – first floor:
original sluice room and fittings, view to
the south





Plate 27.67: Building 27b – first floor: converted bedrooms, view to the south



Plate 27.68: Building 27b – first floor: converted and refurbished bedrooms, view to the northeast



Plate 27.69: Building 27b – first floor: blocked lancet window, view to the south

Plate 27.70: Building 27b – first floor: former payphone area showing graffiti, view to the southwest





Plate 27.71: Building 27b – second floor: original bedroom view to the southeast



Plate 27.72: Building 27b – second floor: washroom cupboard



Plate 27.73: Building 27b – second floor:
original bathroom, view to the north

Plate 27.74: Building 27b – second floor:
'Sani-can' from bathroom





Plate 28.1: Building 28: south and east elevations



Plate 28.2: Building 28: west elevation



Plate 28.3: Building 28: interior, view to the west



Plate 29.1: Building 29: north and east elevations showing interior



Plate 29.2: Building 29: west elevation



Plate 29.3: Building 29: detail of original switches



Plate 30.1: Building 30: northern elevation



Plate 30.2: Building 30:
doorcase to principal (front)
entrance, view to the south

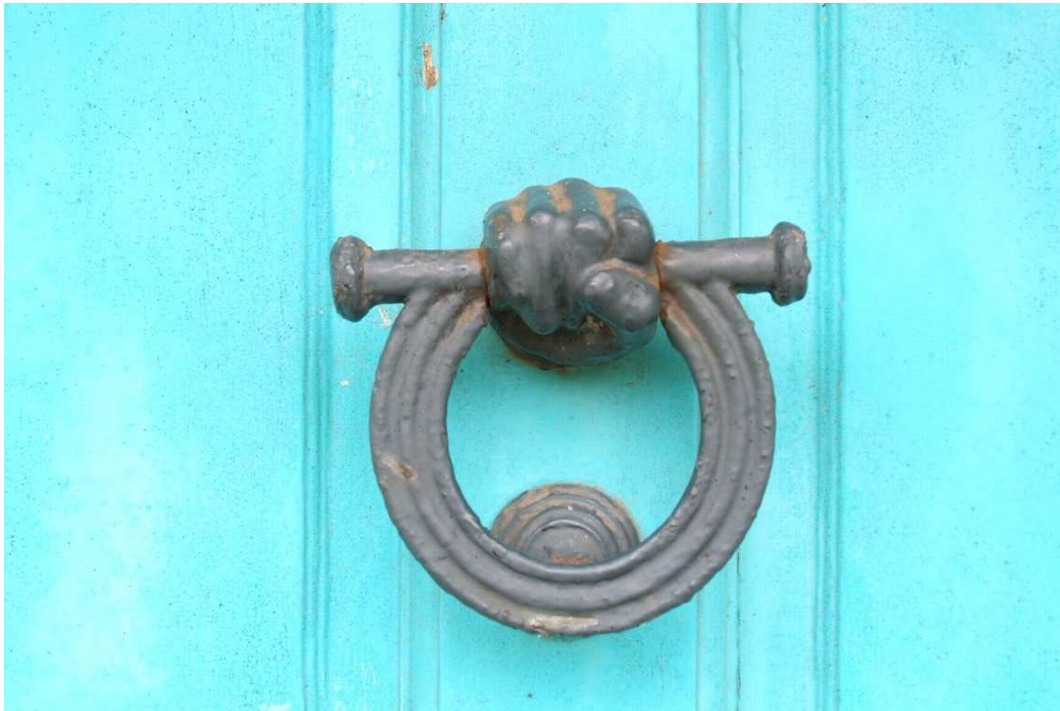


Plate 30.3: Building 30: detail of door knocker on front door



Plate 30.4: Building 30: detail of 1820s ground floor window, view to the southwest



Plate 30.5: Building 30: detail of 1820s first floor window showing eaves cornice, view up and to the southeast



Plate 30.6: Building 30: western elevation, view to the northeast



Plate 30.7: Building 30: detail of western elevation showing changes in brickwork, view to northwest



Plate 30.8: Building 30: southern elevation



Plate 30.9: Building 30: eastern side of southwest wing

Plate 30.10: Building 30: detail of original southern elevation showing alterations to brickwork below stairlight, view to the north





Plate 30.11: Building 30: eastern elevation, view to the southwest

Plate 30.12: Building 30 (GF): entrance hall showing later staircase, view to the southwest





Plate 30.13: Building 30 (GF):
entrance hall showing carved newel
to staircase



Plate 30.14: Building 30 (GF): entrance hall showing detail of cornice



Plate 30.15: Building 30 (GF):
entrance hall showing ceiling rose



Plate 30.16: Building 30 (GF): northwest principal room, view to the northwest



Plate 30.17: Building 30 (GF): northwest principal room showing detail of 1820s window case, view to the northwest

Plate 30.18: Building 30 (GF): northwest principal room showing detail of 1820s shutters, view to west





Plate 30.19: Building 30 (GF): northeast principal room, view to the southeast



Plate 30.20: Building 30 (GF): northeast principal room showing detail of blocked fireplace, view to the south



Plate 30.21: Building 30 (GF): northeast principal room showing original doors to wardrobe, view to the southwest

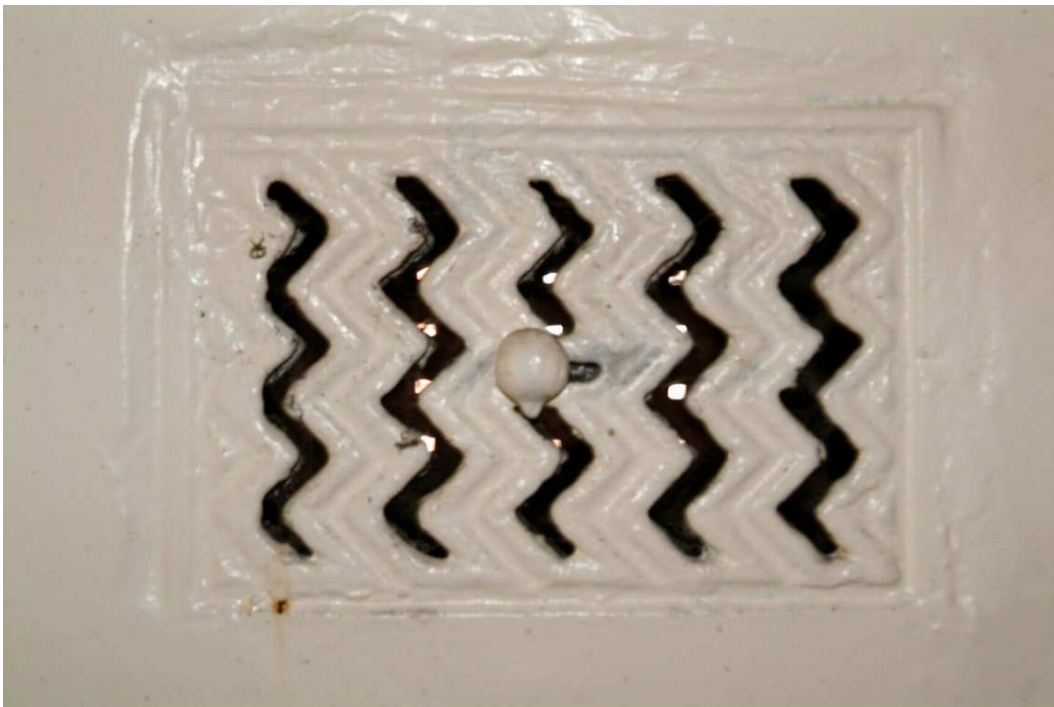


Plate 30.22: Building 30 (GF): northeast principal room showing vent in rear of wardrobe, view to the south



Plate 30.23: Building 30 (GF): kitchen in mid 19th century extension to southwest wing, view to the south



Plate 30.24: Building 30 (GF): kitchen in mid 19th century extension to southwest wing, view to the north



Plate 30.25: Building 30 (GF): bedroom in late 20th century southeast wing, view to the southeast



Plate 30.26: Building 30 (LGF): westernmost part of original basement showing inserted door and blocked fireplace, view to the south



Plate 30.27: Building 30 (LGF): westernmost part of original basement showing original door to central room, view to the east



Plate 30.28: Building 30 (LGF): westernmost part of original basement showing part blocked window opening, view to the west



Plate 30.29: Building 30 (LGF): westernmost part of original basement showing remnants of service bell arrangement, view to the north



Plate 30.30: Building 30 (LGF): central part of original basement showing inserted stair enclosure and scar of former stairs, view to the south



Plate 30.31: Building 30 (LGF): easternmost part of original basement showing blocked fireplace and window, view to the south



Plate 30.32: Building 30 (LGF): easternmost part of original basement showing part blocked window, view to east



Plate 30.33: Building 30 (LGF): corridor along north of late 20th century extension showing inserted opening through rear wall of original house, view to the west



Plate 30.34: Building 30 (LGF): refurbished interior of early 19th century southwest extension, view to the southwest



Plate 30.35: Building 30 (LGF): rear entrance to late 20th century extension, view to the southwest



Plate 30.36: Building 30 (LGF): interior of south eastern room in the late 20th century extension, view to the southeast



Plate 30.37: Building 30 (FF): landing showing inserted door beyond, view to the southwest



Plate 30.38: Building 30 (FF): landing showing original doorways to the bathroom and attic stairs



Plate 30.39: Building 30 (FF): northwest principal room, view to the northwest



Plate 30.40: Building 30 (FF): northwest principal room showing blocked connecting door to bathroom, view to the northeast



Plate 30.41: Building 30 (FF): northwest principal room showing detail of window and surround, view to the northeast



Plate 30.42: Building 30 (FF): northeast principal room, view to the northeast



Plate 30.43: Building 30 (FF): northeast principal room showing doorway to wardrobe, view to the south



Plate 30.44: Building 30 (FF): interior of bathroom, view to the north



Plate 30.45: Building 30 (FF): bedroom in late 19th century extension to southwest wing showing inserted doorway through rear wall of original house, view to the north



Plate 30.46: Building 30 (FF): bedroom in late 19th century extension to southwest wing, view to the southwest



Plate 30.47: Building 30 (FF): original stairs to attic floor, view to the north

Plate 30.48: Building 30 (attic floor): early 20th century stair enclosure, view to the northeast





Plate 30.49: Building 30 (attic floor): bedroom and fire escape window, view to the south



Plate 30.50: Building 30 (attic floor): northern corridor, view to the west



Plate 30.51: Building 30 (attic floor): interior of former store room, view to the west

Plate 30.52: Building 30 (attic floor): interior of former store room showing roof access hatch and low door to southwest store, view to the south





Plate 30.53: Building 30 (attic floor): interior of southwest store room, view to the southwest



Plate 30.54: Building 30 (attic floor): northern corridor showing doors to bedroom and eastern roof space, view to southeast



Plate 30.55: Building 30 (attic floor): interior of eastern roof space showing door to northern corridor, view to the west



Plate 30.56: Building 30 (attic floor): artefacts recovered from beneath rockwool insulation



Plate 30.57: Building 30 (GF): reshaped window opening and earlier paint decoration in northwest room, view to the northeast



Plate 30.58: Building 30 (GF): detail of wallpaper and dado recovered from behind 1820s sash box



Plate 30.59: Building 30 (GF): exposed floor structure in northwest room



Plate 30.60: Building 30 (GF): blocked openings to former wardrobes in northeast room



Plate 30.61: Building 30 (GF): detail of floor joist showing EH stamp in end



Plate 31.1: Building 31: general view showing chain-link enclosure and gate, view to the southwest



Plate 31.2: Building 31: gated entrance to compound from Infirmary walk, view to the west



Plate 31.3: Building 31: eastern elevation, view to the southwest

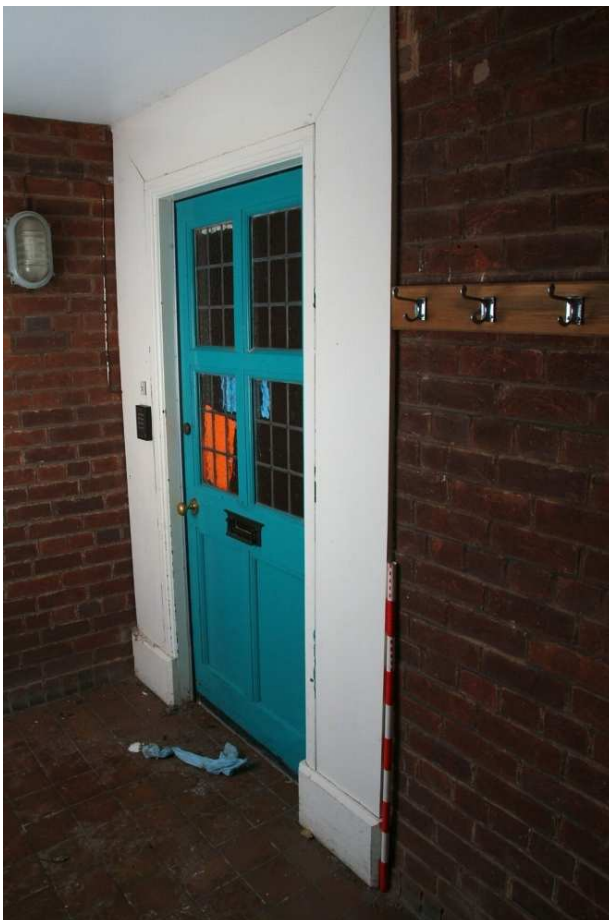


Plate 31.4: Building 31: detail of original exterior door



Plate 31.5: Building 31: southern extension, view to the northwest

Plate 31.6: Building 31: north elevation, view to the southwest





Plate 31.7: Building 31: western elevation, view to the southeast



Plate 31.8: Building 31: eastern elevation, view to the northwest



Plate 31.9: Building 31: southern elevation, view to the north



Plate 31.10: Building 31 (GF):
stair hall, view to the west



Plate 31.11: Building 31 (GF): interior of former kitchen, view to the southwest



Plate 31.17: Building 31 (GF): former dining room in southwest corner of original house, view to the north



Plate 31.13: Building 31 (GF): former living room in southeast corner of original house, view to the east



Plate 31.14: Building 31 (GF): staircase showing murals, view to the north



Plate 31.15: Building 31 (GF): inserted corridor between dining and sitting room leading to southern extension, view to the south



Plate 31.16: Building 31 (GF): west side of extension, view to the north



Plate 31.17: Building 31 (GF): interior of children's bathroom, view to the east



Plate 31.18: Building 31: first floor landing, view to the southeast



Plate 31.19: Building 31 (FF): refurbished bathroom, view to the southwest



Plate 31.20: Building 31 (FF): principal bedrooms, view to the west



Plate 32.1: Building 32: western elevation, view to the north

Plate 32.2: Building 32: interior of first floor plant room, view to the southeast





Plate 32.3: Building 32: main kitchen area showing central cooking area, view to the west



Plate 32.4: Building 32: main kitchen area showing prep areas, view to the west



Plate 32.5: Building 32: plating room, view to the west



Plate 32.6: Building 32: cold store, view to the east



Plate 33.1: Building 33 – roof showing plan form and relationship to the southwest corner tower of the main infirmary, view to the west



Plate 33.2: Building 33 – view between the southwest corner tower (left) and subject building, view to the east



Plate 33.3: Building 33 – northern elevation of western part, view to the southwest



Plate 33.4: Building 33 – northern elevation showing blocked entrance in western part, view to the southwest



Plate 33.5: Building 33 – northern elevation of eastern part, view to the southeast



Plate 33.6: Building 33 – original signage on door to western part



Plate 33.7: Building 33 –interior of western part, view to the east



Plate 33.8: Building 33 –typical lavatory cubicle, view to the north



Plate 33.9: Building 33 – interior of northern part, view to the north



Plate 33.10: Building 33 - interior of northern part, view to the southwest



Plate 33.11: Building 33 – detail of original light switch in eastern part, view to the north



Plate 34.1: Building 34 – North elevation, view to the southeast



Plate 34.2: Building 34 – roof, view to the southwest



Plate 34.3: Building 34 – detail of entrance to the western part, view to the south



Plate 34.4: Building 34 – detail of window in the western part, view to the south



Plate 34.5: Building 34 – detail of entrance to the eastern part, view to the south



Plate 34.6: Building 34 – detail of air brick in the western part, view to the south



Plate 34.7: Building 34 – interior of western part view to the northeast



Plate 34.8: Building 34 – detail of c.1950s roof light



Plate 34.9: Building 34 – interior of the eastern part, view to the south



Plate 34.10: Building 34 – detail showing roof vent in eastern part



Plate 34.11: Building 34 – detail of vent in south wall, view to the south



Plate 34.12: Building 34 – detail of closable vent in the northern wall, view to the north



Plate 34.13: Building 34 – detail of c.1930s light switch, view to the northwest



Plate 35.1: Building 35 – general view of northern elevation, view to the southwest



Plate 35.2: Building 35 – north elevation of western part, view to the southeast



Plate 35.3: Building 35 – roof light on flat roof of western part, view to the south



Plate 35.4: Building 35 – interior, view to the southeast



Plate 35.5: Building 35 – northern elevation of the eastern part, view to the southeast



Plate 35.6: Building 35 – southern hip to the roof of the eastern part, view to the west



Plate 35.7: Building 35 – detail of entrance to the eastern part, view to the south



Plate 35.8: Building 35 – interior of eastern part showing architrave to entrance, view to the north



Plate 35.9: Building 35 – internal partition, view to the southwest



Plate 35.10: Building 35 – southern room of eastern part, view to the east



Plate 35.11: Building 35 – detail of roof structure in eastern part, view to the northeast



Plate 35.12: Building 35 – view of fireplace following demolition of the building, view to the east



Plate 36.1: Building 36 – general view of north elevation, view to the southeast



Plate 36.2: Building 36 – roof, view to the southwest



Plate 36.3: Building 36 – eastern elevation showing truncated buttresses, view to the southwest



Plate 36.4: Building 36 – detail of original vent in eastern elevation, view to the west



Plate 36.5: Building 36 – easternmost part of southern elevation, view to the north



Plate 36.6: Building 36 – westernmost part of southern elevation, view to the northwest



Plate 36.7: Building 36 – southern elevation showing 20th century insertion of concrete foundation for fire escape, view to the northeast



Plate 36.8: Building 36 – entrance in northern elevation showing steps to elevated floor level, view to the southeast



Plate 36.9: Building 36 – interior, view to the southeast



Plate 36.10: Building 36 – detail of roof structure, view to the southwest



Plate 36.11: Building 36 – detail of closable vent in east side, view to the southeast



Plate 37.1: Building 37 – view of roof showing relationship to surrounding structures, view to the southwest



Plate 37.2: Building 37 – north end of west elevation, view to the southeast



Plate 37.3: Building 37 – west elevation, view to the south

Plate 37.4: Building 37 – south elevation, view to the northeast





Plate 37.5: Building 37 – detail of makers badge on south elevation



Plate 37.6: Building 37 – east elevation, view to the north



Plate 37.7: Building 37 – general view of interior, view to the north



Plate 38.1: Building 38 – west elevation



Plate 38.2: Building 38 – internal corridor along the west side looking into Building 24f, view to the north



Plate 38.3: Building 38 – detail of Bakelite switches, view to the north



Plate 38.4: Building 38 – detail of Bakelite bulb holder, view to the southwest



Plate 39.1: Building 39 – general view to the southwest



Plate 39.2: Building 39 – detail of Castle Street elevation showing change in fabric, view to the southwest



Plate 39.3: Building 39 – detail of 'Hardy and Padmore' electricity box cover, view to the south



Plate 39.4: Building 39 – southern elevation



Plate 39.5: Building 39 – general view of western elevation from infirmary steps, view to the northeast



Plate 39.6: Building 39 – western elevation from terrace on Building 41



Plate 39.7: Building 39 – lower ground floor plant room, view to the southeast



Plate 39.8: Building 39 – upper ground floor main corridor, view to the east



Plate 39.9: Building 39 – upper ground floor typical consulting room, view to the southeast



Plate 39.10: Building 39 – upper ground floor typical lab/ prep area, view to the northeast



Plate 39.11: Building 39 - upper ground floor typical signage



Plate 39.12: Building 39 – lower ground floor internal staircase, view to the northwest



Plate 39.13: Building 39 - lower ground floor principal corridor, view to the east



Plate 39.14: Building 39 – sound studio in speech therapy department, view to the southeast



Plate 39.15: Building 39 – lower ground floor eastern corridor view to the south

Plate 39.16: Building 39 - lower ground floor plant room, view to the east





Plate 40.1: Building 40: north elevation, view to the southeast



Plate 40.2: Building 40: detail of centerpiece on north elevation



Plate 40.3: Building 40: detail of tablet centerpiece

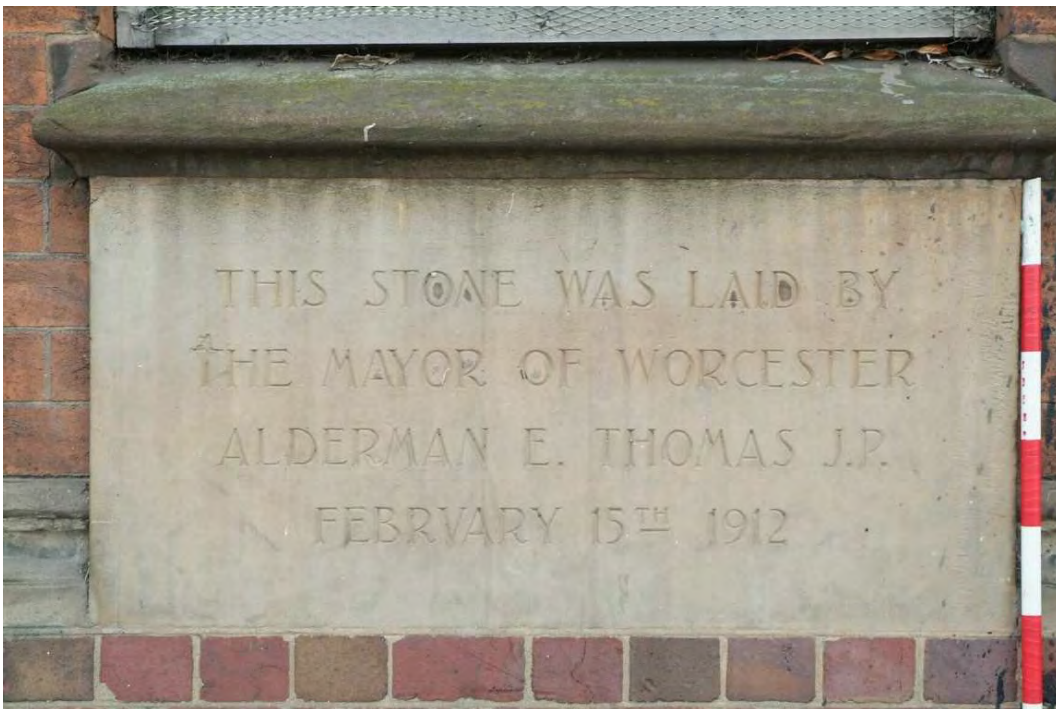


Plate 40.4: Building 40: detail of foundation stone in centerpiece



Plate 40.5: Building 40: left hand flanking wing of north elevation, view to the southwest

Plate 40.6: Building 40: right hand flanking wing of north elevation, view to the southeast





Plate 40.7: Building 40: eastern part of southern elevation, view to the northeast



Plate 40.8: Building 40: western part of the north elevation, view to the northwest



Plate 40.9: Building 40 (LGF):
entrance to the central corridor from
Building 41, view to the east

Plate 40.10: Building 40 (LGF):
outpatients buffet [Room 0.32].
view to the north





Plate 40.11: Building 40 (LGF): buffet wash-up area, view to the south



Plate 40.12: Building 40 (LGF): typical consulting room [Room 0.27] view to the south



Plate 40.13: Building 40 (LGF): typical fittings [Room 0.24], view to the north



Plate 40.14: Building 40 (LGF): clean utility room [Room 0.39] showing two types of windows, view to the north



Plate 40.15: Building 40 (LGF):
inserted passage [Rom 0.37]
showing glazed partition, view to the
east

Plate 40.16: Building 40 (LGF):
interior of examination room [Room
0.36] showing partition across
window, view to the north





Plate 40.17: Building 40 (LGF):
detail of relocated door handle in
Room 0.36

Plate 40.18: Building 40 (UGF):
corridor leading from Rushout Ward,
view to the southwest





Plate 40.19: Building 40 (UGF): south corridor along western end, view to the north



Plate 40.20: Building 40 (UGF): main east-west corridor [Room 1.5], view to the east



Plate 40.21: Building 40 (UGF): typical southern room [Room 1.4], view to the southeast



Plate 40.22: Building 40 (UGF): office [Room 1.1] at east end, view to the northwest



Plate 40.23: Building 40 (UGF): splint room [Room 1.8] showing oculus windows, view to the northwest



Plate 40.24: Building 40 (UGF): detail of oculus window, view to the north



Plate 40.25: Building 40 (UGF): interior of roofspace showing rooflight over western flanking range



Plate 41.1: Building 41: northern elevation



Plate 41.2: Building 41: detail of former main entrance, view to the southeast



Plate 41.3: Building 40: limited view of western gable, view to the southeast



Plate 41.4: Building 41: detail of George VI post box in northern elevation



Plate 41.5: Building 41: general view of the interior showing inserted mezzanine, view to the west



Plate 41.6: Building 41: general view of the interior from mezzanine, view to the east



Plate 41.7: Building 41: former street entrance enclosure and inserted offices below mezzanine, view to the northeast



Plate 41.8: Building 41: south wall showing openings to infirmary, view to the south



Plate 41.9: Building 41: detail of typical pilaster head, view to the south



Plate 41.10: Building 41: entrance to the dermatology department, view to the south



Plate 41.11: Building 41: outpatients buffet counter



Plate 41.12: Building 41: inserted office beneath mezzanine showing blocked door, view to the northeast



Plate 41.13: Building 41: detail of plaque in later office, view to the south



Plate 41.14: Building 41: stairs to mezzanine, view to the northwest



Plate 41.15: Building 41: mezzanine floor, view to the east



Plate 41.16: Building 41: mezzanine office showing blocked window, view to the north



Plate 41.17: Building 41: mezzanine floor frosted coloured Perspex panels, view to the south



Plate 41.18: Building 41: mezzanine floor, view to the east



Plate 41.19: Building 41:
mezzanine floor (west end), view to
the south



Plate 41.20: Building 41 – ground floor - dispensary counter, view to the west



Plate 41.21: Building 41 – ground floor - dispensary, view to the northeast



Plate 41.22: Building 41 – ground floor - office store looking through to Building 48, view to the west



Plate 41.23: Building 41 – ground floor - corridor along south showing opening through original infirmary wall to Room 61, view to the southeast



Plate 41.24: Building 41 – corridor along south, view to the east



Plate 41.25: Building 41 – Room 53 showing blocked opening to connecting corridor for northwest corner tower and chimney stack, view to the south



Plate 42.1: Building 42 – General view of gates to the principal entrance from Infirmary Walk, view to the southwest



Plate 42.2: Building 42 – General view of railings to the south of the principal entrance



Plate 42.3: Building 42 – detail of gate piers, view to the southwest

Plate 42.4: Building 42 – detail of southern gate pier, view to the southeast





Plate 42.5: Building 42 – detail of pedestrian gate to the north side, view to the west



Plate 42.6: Building 42 - detail of boss in pedestrian gate



Plate 42.7: Building 42 –detail of lock in pedestrian gate



Plate 42.8: Building 42 – detail of lower ironwork in pedestrian gate



Plate 42.9: Building 42 – detail of railings to south of gates, view to the southwest



Plate 43.1: Building 43 – east elevation, view to the southwest



Plate 43.2: Building 43 – roof, view to the south



Plate 43.3: Building 43 – detail of centrepiece on east elevation

Plate 43.4: Building 43 – detail of doorcase to principal entrance





Plate 43.5: Building 43 – detail of foundation stone in principal elevation



Plate 43.6: Building 43 – detail of original door bell in principal elevation



Plate 43.7: Building 43 – detail of low level windows in principal elevation



Plate 43.8: Building 43 – north elevation, view to the southeast



Plate 43.9: Building 43 – detail of basement entrance on north elevation

Plate 43.10: Building 43 – detail of lancet window in west side of basement porch, view to the east





Plate 43.11: Building 43 – basement window to the east of the porch, view to the southeast



Plate 43.12: Building 43 - basement window to the west of the porch, view to the south



Plate 43.13: Building 43 – detail of former bell pull rebate to west of basement door, view to the southeast



Plate 43.14: Building 43 – western elevation



Plate 43.15: Building 43 – detail of centrepiece to western elevation

Plate 43.16: Building 43 – side door on the left of the western elevation





Plate 43.17: Building 43 – south elevation



Plate 43.18: Building 43 – ground floor: entrance hall showing formerly blocked opening to the north range and entrance basement, view to the north



Plate 43.19: Building 43 – ground floor: entrance hall, view to the south



Plate 43.20: Building 43 – ground floor: detail of terrazzo in around foot of stairs, view to the east



Plate 43.21: Building 43 – ground floor: detail of later strengthening to staircase



Plate 43.22: Building 43 – ground floor: basement stairs, view to the north



Plate 43.23: Building 43 – ground floor: lobby around principal western entrance, view to the northeast



Plate 43.24: Building 43 – ground floor: lounge area showing surviving fireplace, view to the south



Plate 43.25: Building 43 – ground floor:
detail of skirting in lounge, living room
and sitting



Plate 43.26: Building 43 – ground floor: living room showing blocked fireplace



Plate 43.27: Building 43 – ground floor:
corridor along south side of northern range,
view to the north

Plate 43.28: Building 43 – ground floor:
typical details of former bedrooms in
northern range, view to the northwest





Plate 43.29: Building 43 – ground floor:
typical original door and overlight to bedrooms
in north and south ranges

Plate 43.30: Building 43 – ground floor:
eastern central bedroom in north range
showing off centre window, view to the
north





Plate 43.31: Building 43 – ground floor: inserted doorway to eastern central bedroom fitted with reproduction door, view to the south



Plate 43.32: Building 43 – ground floor: detail of standard skirting



Plate 43.33: Building 43 – ground floor: entrance to southern wing showing wide opening to store room, view to the south

Plate 43.34: Building 43 – ground floor: kitchen area formerly bathroom, adjacent to the entrance hall, view to the east





Plate 43.35: Building 43 - ground floor: corridor along north side of southern range, view to the south



Plate 43.36: Building 43 – ground floor: detail of early 20th century ideal radiator at west end of corridor, view to the south



Plate 43.37: Building 43 – ground floor:
western room in southern range showing
surviving fireplace without surround, view
to the southeast

Plate 43.38: Building 43 – ground floor:
detail of historic paintwork and skirting
preserved beneath later fire surround,
view to the east





Plate 43.39: Building 43 – ground floor:
inserted partitions in eastern room of southern
range, view to the southeast

Plate 43.40: Building 43 – ground floor:
interior of bathroom in eastern room of
southern range showing historic pelmet,
view to the east





Plate 43.41: Building 43 – basement: entrance hall, view to the south



Plate 43.42: Building 43 – basement: entrance hall, view to the north



Plate 43.43: Building 43 – basement:
hatch over below floor service duct,
view to the southwest

Plate 43.44: Building 43 – basement:
detail of balustrade at foot of basement
steps, view to the southeast





Plate 43.45: Building 43 – basement: porters room to the west of the basement entrance hall showing tally window, view to the south



Plate 43.46: Building 43 – basement: former boiler room, view to the north



Plate 43.47: Building 43 - basement: former boiler room, view to the north



Plate 43.48: Building 43 - basement: store room showing former light well in west wall, view to the west



Plate 43.49: Building 43 - basement:
store room, view to the north

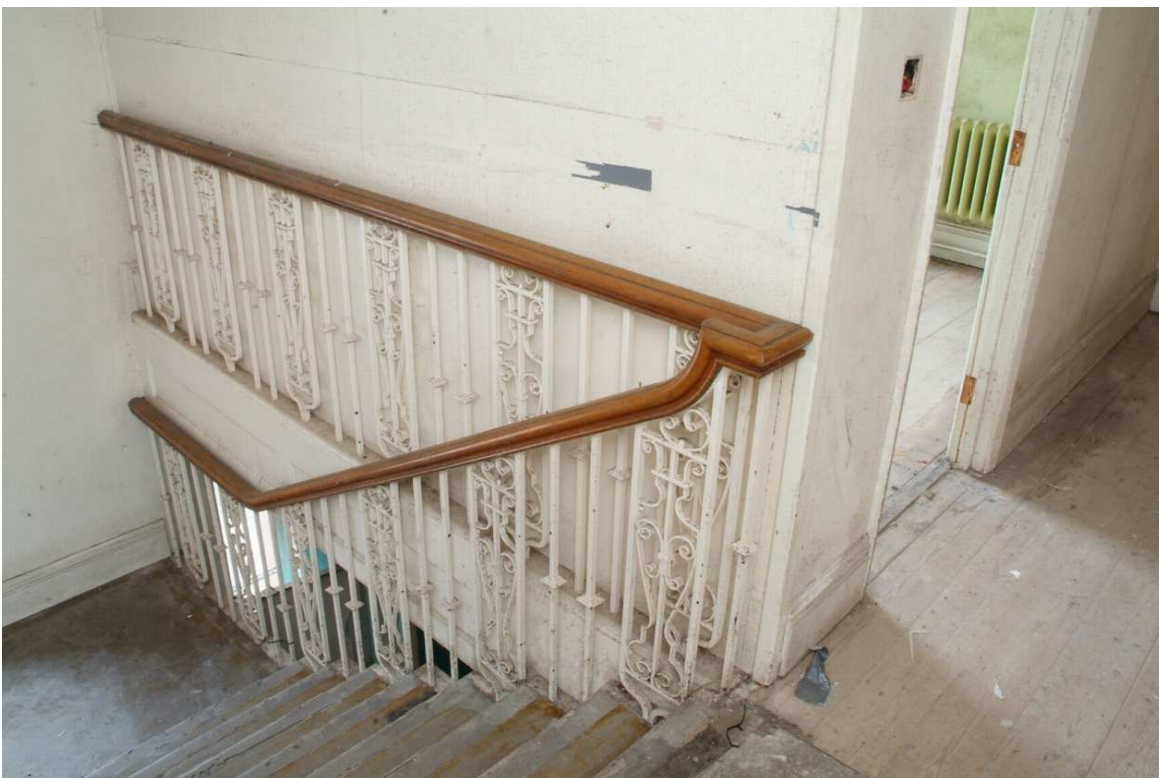


Plate 43.50: Building 43 - first floor: landing showing balustrade return



Plate 43.51: Building 43 - first floor: part blocked opening to northern range, view to the north

Plate 43.52: Building 43 - first floor: original opening to southern range, view to the south





Plate 43.53: Building 43 - first floor:
laundry room to the south of the stairwell,
view to the southeast

Plate 43.54: Building 43 - first floor:
inserted corridor to the west of the central
corridor wall showing blocked original
openings, view to the north





Plate 43.55: Building 43 - first floor:
typical first floor bedroom in central
range, view to the west

Plate 43.56: Building 43 - first floor:
typical door and overhead to rooms on
west side of the central range





Plate 43.57: Building 43 - first floor:
southernmost bedroom in central range
showing fire escape in lower part of the
original doorway, view to the east

Plate 43.58: Building 43 - first floor:
bathroom in central range, view to the
east





Plate 43.59: Building 43 - first floor:
detail of historic, possibly original radiator
in bathroom of the central range, view to
the south

Plate 43.60: Building 43 - first floor:
inserted cupboard on east side of central
corridor, view to the east





Plate 43.61: Building 43 - first floor: eastern bedroom showing line of former corridor and original communal entrance to the W.C., view to the north



Plate 43.62: Building 43 - first floor: original doorway to central bedroom in southern range showing blocked fireplace beyond, view to the south



Plate 43.63: Building 43 - first floor: western bedroom in southern range, showing blocked fireplace and former sink surround, view to the south



Plate 43.64: Building 43 - first floor: corridor in northern range showing rearranged northern end



Plate 43.65: Building 43 - first floor: eastern bedroom in northern range showing line of former south wall, view to the southeast



Plate 43.66: Building 43 - first floor: landing showing string and terminal balustrade, view to the west



Plate 43.67: Building 43 – second floor:
landing, view to the north

Plate 43.68: Building 43 - second floor:
stairwell showing high level stairlight





Plate 43.69: Building 43 - second floor: landing showing original door to bathroom, view to the south

Plate 43.70: Building 43 - second floor: bathroom in central range showing original vertical pipe box, view to the east





Plate 43.71: Building 43 - second floor:
detail of pipe box, view to the south



Plate 43.72: Building 43 - second floor: eastern room of southern range showing
identical alterations to room below, view to the northwest



Plate 43.73: Building 43 - second floor: southern bedroom of central range showing identical alterations to room below, view to the northwest



Plate 43.74: Building 43 – roof space: typical roof truss, view to the north



Plate 43.75: Building 43 - roof space:
detail of king post attachment to tie beam

Plate 43.76: Building 43 - roof space:
internal detail of brick formed oculus in
pediment, view to the south





Plate 44.1: Building 44 – general view of northern elevation, view to the southeast



Plate 44.2: Building 44 – western end, view to the southeast



Plate 44.3: Building 44 – northern end, view to the southwest



Plate 44.4: Building 44 – original drainage goods, view to the south



Plate 44.5: Building 44 – detail of rainwater hopper



Plate 44.6: Building 44 – general view of carriage way, view to the west



Plate 44.7: Building 44 - general view of carriageway, view to the west

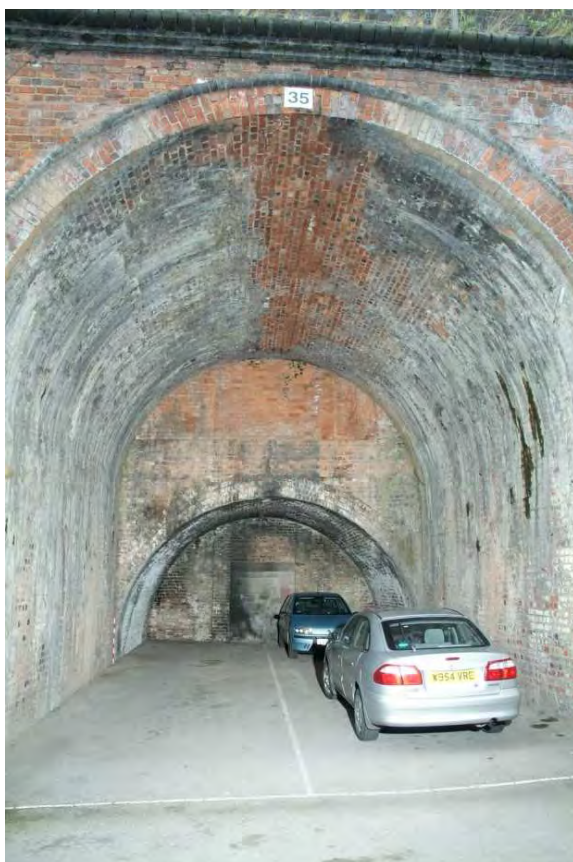


Plate 44.8: Building 44 – interior of arch No 8 from the east, view to the north



Plate 44.9: Building 44 – detail of arch structure, view to the north



Plate 44.10: Building 44 – detail of blocking wall, view to the northeast



Plate 44.11: Building 44 – detail of joint between Butts Siding (right) and viaduct , view to the northwest



Plate 45.1: Building 45 – southern extremity of pre 1897 boundary wall backed by building 9, view to the southwest



Plate 46.1: Building 46 – northern extremity of wall as part of Building 36 to the north, view to the north



Plate 46.2: Building 46 –southern face to south of Building 36 showing concrete insert for fire escape, view to the northeast



Plate 46.3: Building 46 - southern face to south of Building 35 showing concrete insert for fire escape, view to the northwest



Plate 46.4: Building 46 - capping of wall between Buildings 35 (left) and 49, view to the east



Plate 46.5: Building 46 - capping of wall between Buildings 49 (left) and 35/ 23, view to the east



Plate 46.6: Building 46 – north elevation between buildings 13 (left) and 12.



Plate 47.1: Building 47: Castle Street elevation 01



Plate 47.2: Building 47: Castle Street elevation 02



Plate 47.3: Building 47: Castle Street elevation 03



Plate 47.4: Building 47: Castle Street elevation 04



Plate 47.5: Building 47: Castle Street elevation 05



Plate 47.6: Building 47: Castle Street elevation 06



Plate 47.7: Building 47: Castle Street elevation 07



Plate 47.8: Building 47: Castle Street elevation 08



Plate 47.9: Building 47: Castle Street elevation 09



Plate 47.10: Building 47: hospital elevation 01



Plate 47.11 & 11a: Building 47: hospital elevation 02



Plate 47.12: Building 47: hospital elevation 03



Plate 47.13: Building 47: hospital elevation 04



Plate 47.14: Building 47: hospital elevation 05



Plate 47.15: Building 47: hospital elevation 06



Plate 48.1: Building 48: northern part, view to the northeast



Plate 48.2: Building 48: southern part, view to the east



Plate 48.3: Building 48: detail of railings around stairwell to basement



Plate 48.4: Building 48: east elevation of western part, view to the north



Plate 48.5: Building 48: northern elevation, view to the east



Plate 48.6: Building 48: interior of southern part, view to the north



Plate 48.7: Building 48: interior of northern part, view to the northwest



Plate 48.8: Building 48: access to northern part, view to the southwest



Plate 48.9: Building 48: basement – western side showing entrance from stair well, view



Plate 48.10: Building 48: basement –internal north wall, view to the northeast



Plate 48.11: Building 48: basement – detail of north wall showing infilled arch



Plate 48.12: Building 48: basement – detail of brickwork following partial removal of blocking, view to the north



Plate 48.13: Building 48: basement – general interior, view to the northeast



Plate 48.14: Building 48: basement – interior of main eastern part, view to the southeast



Plate 48.15: Building 48: basement – view of boiler exhaust manifold, view to the west



Plate 48.16: Building 48: basement – coal bunker, view to the north



Plate 49.1: Building 49 – general view from the green outside Building 27a, view to the northwest



Plate 49.2: Building 49 – roof, view to the southwest



Plate 49.3: Building 49 – interior of northern dining area, view to the southwest



Plate 49.4: Building 49 – interior of southern dining area, view to the northwest



Plate 49.5: Building 49 - interior of southern dining area, view to the southwest



Published by
Worcestershire
Archive & Archaeology Service

www.explorethepast.co.uk/

