

Appendices

Appendix A LLR HLC Whole Study Area Analysis Report
Appendix B: LLR HLC Leicestershire County Area Analysis Report
Appendix C: LLR HLC Blaby District Area Analysis Report
Appendix D: LLR HLC Charnwood Borough Area Analysis Report
Appendix E: LLR HLC Harborough District Area Analysis Report
Appendix F: LLR HLC Hinckley and Bosworth Borough Area Analysis Report
Appendix G: LLR HLC Melton Borough Area Analysis Report
Appendix H: LLR HLC North West Leicestershire District Area Analysis Report
Appendix I: LLR HLC Oadby and Wigston Borough Area Analysis Report
Appendix J: LLR HLC Leicester City Area Analysis Report
Appendix K: LLR HLC Rutland County Area Analysis Report
Appendix L: LLR HLC National Forest Analysis Report
Appendix M: LLR HLC Belvoir Scarp LCA Analysis Report
Appendix N: LLR HLC Charnwood Forest LCA Analysis Report
Appendix O: LLR HLC Cottesmore Plateau LCA Analysis Report
Appendix P: LLR HLC High Leicestershire LCA Analysis Report
Appendix Q: LLR HLC Knipton Bowl LCA Analysis Report
Appendix R: LLR HLC Langley Lowlands LCA Analysis Report
Appendix S: LLR HLC Loughton Hills LCA Analysis Report
Appendix T: LLR HLC Lutterworth Lowlands LCA Analysis Report
Appendix U: LLR HLC Mease/Sence Lowlands LCA Analysis Report
Appendix V: LLR HLC Soar Valley Lowlands LCA Analysis Report
Appendix W: LLR HLC The Coalfield LCA Analysis Report
Appendix X: LLR HLC The Wolds LCA Analysis Report
Appendix Y: LLR HLC Trent Valley LCA Analysis Report
Appendix Z: LLR HLC Upper Soar LCA Analysis Report
Appendix AA: LLR HLC Vale of Belvoir LCA Analysis Report
Appendix AB: LLR HLC Vale of Catmose LCA Analysis Report
Appendix AC: LLR HLC Welland Valley LCA Analysis Report
Appendix AD: LLR HLC Wreake Valley LCA Analysis Report
Appendix AE: Belvoir Scarp LCA HLC Map
Appendix AF: Charnwood Forest LCA HLC Map
Appendix AG: Cottesmore Plateau LCA HLC Map
Appendix AH: High Leicestershire LCA HLC Map
Appendix AI: Knipton Bowl LCA HLC Map
Appendix AJ: Langley Lowlands LCA HLC Map
Appendix AK: Loughton Hills LCA HLC Map
Appendix AL: Lutterworth Lowlands LCA HLC Map
Appendix AM: Mease/Sence Lowlands LCA HLC Map
Appendix AN: Soar Valley LCA HLC Map
Appendix AO: The Coalfield LCA HLC Map
Appendix AP: The Wolds LCA HLC Map
Appendix AQ: Trent Valley LCA HLC Map
Appendix AR: Upper Soar LCA HLC Map
Appendix AS: Vale of Belvoir LCA HLC Map
Appendix AT: Vale of Catmose LCA HLC Map
Appendix AU: Welland Valley LCA HLC Map
Appendix AV: Wreake Valley LCA HLC Map

Leicestershire CC HNET HLC Area Analysis Report

Number of records: 18973

WHOLE STUDY AREA

	Count	Total Area (Ha)
Broad Type: Civic and Commercial		
HLC Type:		
Commercial and Retail	503	787
Educational	429	706
Hospitals	80	121
Municipal and Civic	228	245
Religious	328	24
Totals for Civic and Commercial	1568	1883
Broad Type: Extractive and Landfill		
HLC Type:		
Abandoned/Restored Clay Extraction	2	7
Abandoned/Restored Deep Coal Mines	7	67
Abandoned/Restored Open Cast Coal Mines	5	41
Abandoned/Restored Sand and Gravel Quarry	1	34
Abandoned/Restored Stone Quarries	18	131
Clay Extraction	18	198
Gypsum Extraction	1	21
Landfill	7	49
Open Cast Coal Mines	4	170
Sand and Gravel Quarry	13	284
Stone Quarries	29	940
Totals for Extractive and Landfill	105	1942

	Count	Total Area (Ha)
Broad Type: Fields and Enclosed Land		
HLC Type:		
Drained Wetlands	21	455
Irregular Squatter Enclosure	5	8
Large Assarts with Sinuous Boundaries	22	1163
Large Irregular Fields	226	8212
Other Large Rectilinear Fields	135	5521
Other Small Rectilinear Fields	545	3171
Paddocks and Closes	278	648
Piecemeal Enclosure	360	14278
Planned Enclosure	914	61807
Planned Enclosure Containing Ridge and Furrow	347	8470
Planned Woodland Clearance	56	1470
Rectilinear Squatter Enclosure	2	5
Re-organised Piecemeal Enclosure	537	45996
Small Assarts	49	925
Small Irregular Fields	200	1328
Very Large Post-War Fields	488	39258
Totals for Fields and Enclosed Land	4185	192715
Broad Type: Industrial		
HLC Type:		
Derelict Industrial Land	13	142
Engineering and Metal Working	4	7
Other Works	90	200
Post-1880s Industrial Complex	504	2758
Pre-1880s Industrial Complex	28	146
Textiles, Boot & Shoe and Associated Industries	27	15
Totals for Industrial	666	3268
Broad Type: Military		
HLC Type:		
Abandoned Ordnance Depot	1	8
Barracks/Training Ground	7	78
Former Ordnance Depot Now Used For Other Purposes	1	1
Military Airfield	1	312
Military Airfield Abandoned	8	1110
Totals for Military	18	1509

	Count	Total Area (Ha)
Broad Type: Orchards and Allotments		
HLC Type:		
Post War Allotments	92	78
Post-1880s Nursery/Horticulture	62	199
Post-1880s Orchards	4	21
Pre-1880s Nursery/Horticulture	5	7
Pre-War Allotments	105	190
Totals for Orchards and Allotments	268	495
Broad Type: Ornamental, Parkland and Recreational		
HLC Type:		
Cemeteries	85	119
Golf Course	50	1728
Other Parkland	424	1918
Parks and Gardens	131	2264
Public Open Space	252	597
Racecourse	2	68
Sports Fields	383	1507
Village Greens	9	3
Totals for Ornamental, Parkland and Recreational	1336	8204

	Count	Total Area (Ha)
Broad Type: Settlement		
HLC Type:		
Country House	198	259
Farm Complex	1478	1106
Historic Settlement Core	495	2244
Post 1970s Residential Development	1768	4614
Pre-1880s Settlement Detached	417	225
Pre-1880s Settlement Semi Detached	49	18
Pre-1880s Settlement Terraced	225	140
Settlement 1st-2nd ed Detached	81	83
Settlement 1st-2nd ed Semi Detached	49	32
Settlement 1st-2nd ed Terraced	250	391
Settlement 2nd-3rd ed Detached	191	443
Settlement 2nd-3rd ed Semi Detached	256	554
Settlement 2nd-3rd ed Terraced	191	158
Settlement 3rd-4th ed Detached	159	257
Settlement 3rd-4th ed Semi Detached	290	922
Settlement 3rd-4th ed Terraced	117	127
Settlement Pre-1970s Detached	933	1835
Settlement Pre-1970s Semi Detached	693	2626
Settlement Pre-1970s Terraced	216	364
Totals for Settlement	8066	17058
Broad Type: Transportation		
HLC Type:		
Canal Locks/Basin	20	47
Civil Airports/Airfields	5	947
Major Road Junction	37	347
Service Station	4	25
Train Stations/Sidings/Cuttings	28	75
Totals for Transportation	94	1441
Broad Type: Unenclosed Land		
HLC Type:		
Heathland	9	152
Other Commons	5	31
Totals for Unenclosed Land	14	183

	Count	Total Area (Ha)
Broad Type: Water and Valley Floor		
HLC Type:		
Artificial Lake/Pond	154	552
Marsh	8	28
Miscellaneous Floodplain Fields	241	3907
Natural Open Water	1	14
Reservoir	27	1643
Totals for Water and Valley Floor	431	6144
Broad Type: Woodland		
HLC Type:		
Broadleaved Ancient Woodland	107	1569
Broadleaved Plantation	624	3283
Broadleaved Woods with Sinuous Boundaries	43	258
Coniferous Plantation	66	272
Coniferous Woodland with Sinuous Boundaries	4	54
Mixed Ancient Woodlands	4	57
Mixed Plantation	117	650
Mixed Woods with Sinuous Boundaries	5	18
Other Plantation	1160	2925
Other Woods with Sinuous Boundaries	30	59
Replanted Ancient Woodlands	62	1079
Totals for Woodland	2222	10224

Leicestershire CC HNET HLC Area Analysis Report

Number of records: 14739

LLR HLC LEICESTERSHIRE ONLY Polygons

	Count	Total Area (Ha)
Broad Type: Civic and Commercial		
HLC Type:		
Commercial and Retail	259	601.02
Educational	271	617.81
Hospitals	38	55.79
Municipal and Civic	117	185.67
Religious	206	104.10
Totals for Civic and Commercial	891	1564.38
Broad Type: Extractive and Landfill		
HLC Type:		
Abandoned/Restored Clay Extraction	2	8.53
Abandoned/Restored Deep Coal Mines	7	70.96
Abandoned/Restored Open Cast Coal Mines	5	42.51
Abandoned/Restored Sand and Gravel Quarry	1	34.77
Abandoned/Restored Stone Quarries	10	100.68
Clay Extraction	18	205.25
Gypsum Extraction	1	21.37
Landfill	7	52.42
Open Cast Coal Mines	4	172.21
Sand and Gravel Quarry	13	290.77
Stone Quarries	24	640.40
Totals for Extractive and Landfill	92	1639.87

	Count	Total Area (Ha)
Broad Type: Fields and Enclosed Land		
HLC Type:		
Drained Wetlands	19	438.53
Irregular Squatter Enclosure	5	9.97
Large Assarts with Sinuous Boundaries	17	759.84
Large Irregular Fields	190	7140.61
Other Large Rectilinear Fields	128	5334.65
Other Small Rectilinear Fields	496	3290.46
Paddocks and Closes	195	493.18
Piecemeal Enclosure	336	13808.64
Planned Enclosure	732	49024.97
Planned Enclosure Containing Ridge and Furrow	254	6895.42
Planned Woodland Clearance	45	1039.98
Rectilinear Squatter Enclosure	2	6.50
Re-organised Piecemeal Enclosure	497	43895.31
Small Assarts	46	917.80
Small Irregular Fields	176	1335.70
Very Large Post-War Fields	380	28686.53
Totals for Fields and Enclosed Land	3518	163078.08
Broad Type: Industrial		
HLC Type:		
Derelict Industrial Land	9	141.96
Engineering and Metal Working	1	0.77
Other Works	71	205.63
Post-1880s Industrial Complex	366	2317.38
Pre-1880s Industrial Complex	26	155.56
Textiles, Boot & Shoe and Associated Industries	19	19.82
Totals for Industrial	492	2841.11
Broad Type: Military		
HLC Type:		
Abandoned Ordnance Depot	1	8.48
Barracks/Training Ground	5	22.74
Former Ordnance Depot Now Used For Other Purposes	1	1.14
Military Airfield Abandoned	6	641.63
Totals for Military	13	673.98

	Count	Total Area (Ha)
Broad Type: Orchards and Allotments		
HLC Type:		
Post War Allotments	71	82.35
Post-1880s Nursery/Horticulture	56	219.38
Post-1880s Orchards	3	22.57
Pre-1880s Nursery/Horticulture	3	3.20
Pre-War Allotments	68	127.32
Totals for Orchards and Allotments	201	454.83
Broad Type: Ornamental, Parkland and Recreational		
HLC Type:		
Cemeteries	66	103.22
Golf Course	40	1271.20
Other Parkland	290	1196.59
Parks and Gardens	104	2023.21
Public Open Space	183	505.46
Racecourse	2	68.84
Sports Fields	292	1316.22
Village Greens	7	6.13
Totals for Ornamental, Parkland and Recreational	984	6490.87

Appendix B: LLR HLC Leicestershire County Area Analysis Report

	Count	Total Area (Ha)
Broad Type: Settlement		
HLC Type:		
Country House	163	303.85
Farm Complex	1304	1649.26
Historic Settlement Core	411	2010.22
Post 1970s Residential Development	1342	4703.98
Pre-1880s Settlement Detached	344	357.63
Pre-1880s Settlement Semi Detached	36	29.46
Pre-1880s Settlement Terraced	145	135.83
Settlement 1st-2nd ed Detached	68	102.13
Settlement 1st-2nd ed Semi Detached	36	42.75
Settlement 1st-2nd ed Terraced	162	223.38
Settlement 2nd-3rd ed Detached	126	394.19
Settlement 2nd-3rd ed Semi Detached	134	278.61
Settlement 2nd-3rd ed Terraced	99	126.01
Settlement 3rd-4th ed Detached	125	284.67
Settlement 3rd-4th ed Semi Detached	188	612.54
Settlement 3rd-4th ed Terraced	53	66.34
Settlement Pre-1970s Detached	858	2129.35
Settlement Pre-1970s Semi Detached	581	2412.51
Settlement Pre-1970s Terraced	111	185.13
Totals for Settlement	6286	16047.83
Broad Type: Transportation		
HLC Type:		
Canal Locks/Basin	18	48.12
Civil Airports/Airfields	5	949.06
Major Road Junction	33	341.65
Service Station	4	27.19
Train Stations/Sidings/Cuttings	21	58.14
Totals for Transportation	81	1424.18
Broad Type: Unenclosed Land		
HLC Type:		
Heathland	9	156.03
Other Commons	5	33.87
Totals for Unenclosed Land	14	189.91

Appendix B: LLR HLC Leicestershire County Area Analysis Report

	Count	Total Area (Ha)
Broad Type: Water and Valley Floor		
HLC Type:		
Artificial Lake/Pond	140	598.23
Marsh	4	9.01
Miscellaneous Floodplain Fields	201	3415.38
Natural Open Water	1	14.32
Reservoir	15	315.39
Totals for Water and Valley Floor	361	4352.32
Broad Type: Woodland		
HLC Type:		
Broadleaved Ancient Woodland	85	1196.20
Broadleaved Plantation	534	3047.89
Broadleaved Woods with Sinuous Boundaries	37	237.40
Coniferous Plantation	56	240.31
Coniferous Woodland with Sinuous Boundaries	4	56.25
Mixed Ancient Woodlands	4	58.50
Mixed Plantation	99	567.31
Mixed Woods with Sinuous Boundaries	4	13.50
Other Plantation	921	2909.51
Other Woods with Sinuous Boundaries	27	66.62
Replanted Ancient Woodlands	35	581.62
Totals for Woodland	1806	8975.12

Leicestershire CC HNET HLC Area Analysis Report

Number of records: 1160

LLR HLC BLABY DISTRICT Polygons

	Count	Total Area (Ha)
Broad Type: Civic and Commercial		
HLC Type:		
Commercial and Retail	28	145.55
Educational	29	74.53
Hospitals	5	11.47
Municipal and Civic	15	58.57
Religious	16	7.19
Totals for Civic and Commercial	93	297.32
Broad Type: Extractive and Landfill		
HLC Type:		
Landfill	2	13.65
Sand and Gravel Quarry	1	38.03
Stone Quarries	3	117.97
Totals for Extractive and Landfill	6	169.64
Broad Type: Fields and Enclosed Land		
HLC Type:		
Drained Wetlands	2	61.75
Large Irregular Fields	9	153.63
Other Large Rectilinear Fields	7	272.66
Other Small Rectilinear Fields	24	224.27
Paddocks and Closes	3	5.89
Piecemeal Enclosure	21	870.65
Planned Enclosure	54	2605.87
Planned Enclosure Containing Ridge and Furrow	3	116.02
Re-organised Piecemeal Enclosure	38	3842.44
Small Irregular Fields	8	51.00
Very Large Post-War Fields	17	975.43
Totals for Fields and Enclosed Land	186	9179.59
Broad Type: Industrial		
HLC Type:		
Other Works	7	22.69
Post-1880s Industrial Complex	43	267.45
Pre-1880s Industrial Complex	2	4.75
Textiles, Boot & Shoe and Associated Industries	3	2.05
Totals for Industrial	55	296.95

	Count	Total Area (Ha)
Broad Type: Orchards and Allotments		
HLC Type:		
Post War Allotments	12	17.35
Post-1880s Nursery/Horticulture	10	19.31
Pre-War Allotments	7	12.67
Totals for Orchards and Allotments	29	49.34
Broad Type: Ornamental, Parkland and Recreational		
HLC Type:		
Cemeteries	10	11.14
Golf Course	9	235.89
Other Parkland	36	119.90
Parks and Gardens	7	47.53
Public Open Space	27	99.43
Sports Fields	27	119.40
Totals for Ornamental, Parkland and Recreational	116	633.30
Broad Type: Settlement		
HLC Type:		
Country House	12	14.51
Farm Complex	76	97.99
Historic Settlement Core	29	118.74
Post 1970s Residential Development	210	981.69
Pre-1880s Settlement Detached	13	11.73
Pre-1880s Settlement Semi Detached	1	1.10
Pre-1880s Settlement Terraced	12	10.51
Settlement 1st-2nd ed Detached	11	27.86
Settlement 1st-2nd ed Semi Detached	2	3.27
Settlement 1st-2nd ed Terraced	13	17.91
Settlement 2nd-3rd ed Detached	15	85.26
Settlement 2nd-3rd ed Semi Detached	12	40.04
Settlement 2nd-3rd ed Terraced	4	4.64
Settlement 3rd-4th ed Detached	13	24.47
Settlement 3rd-4th ed Semi Detached	17	118.52
Settlement 3rd-4th ed Terraced	4	5.67
Settlement Pre-1970s Semi Detached	93	434.57
Settlement Pre-1970s Terraced	22	28.15
Totals for Settlement	559	2026.64

	Count	Total Area (Ha)
Broad Type: Transportation		
HLC Type:		
Major Road Junction	7	55.42
Service Station	1	10.65
Train Stations/Sidings/Cuttings	2	2.76
Totals for Transportation	10	68.83
Broad Type: Unenclosed Land		
HLC Type:		
Other Commons	1	5.89
Totals for Unenclosed Land	1	5.89
Broad Type: Water and Valley Floor		
HLC Type:		
Artificial Lake/Pond	5	23.37
Miscellaneous Floodplain Fields	15	501.07
Totals for Water and Valley Floor	20	524.44
Broad Type: Woodland		
HLC Type:		
Broadleaved Ancient Woodland	2	55.93
Broadleaved Plantation	23	79.01
Broadleaved Woods with Sinuous Boundaries	1	2.05
Coniferous Plantation	1	1.11
Mixed Plantation	8	25.55
Other Plantation	49	116.83
Other Woods with Sinuous Boundaries	1	0.57
Totals for Woodland	85	281.05

Leicestershire CC HNET HLC Area Analysis Report

Number of records: 2559

LLR HLC Charnwood Borough Polygons

	Count	Total Area (Ha)
Broad Type: Civic and Commercial		
HLC Type:		
Commercial and Retail	57	126.84
Educational	76	217.06
Hospitals	6	8.52
Municipal and Civic	23	27.01
Religious	23	15.12
Totals for Civic and Commercial	185	394.55
Broad Type: Extractive and Landfill		
HLC Type:		
Abandoned/Restored Stone Quarries	1	14.97
Gypsum Extraction	1	21.37
Landfill	3	23.49
Sand and Gravel Quarry	1	4.61
Stone Quarries	9	142.77
Totals for Extractive and Landfill	15	207.21
Broad Type: Fields and Enclosed Land		
HLC Type:		
Drained Wetlands	7	228.03
Large Assarts with Sinuous Boundaries	3	135.17
Large Irregular Fields	17	466.95
Other Large Rectilinear Fields	11	289.42
Other Small Rectilinear Fields	59	448.63
Paddocks and Closes	16	29.57
Piecemeal Enclosure	34	1186.29
Planned Enclosure	128	7083.24
Planned Enclosure Containing Ridge and Furrow	14	347.80
Planned Woodland Clearance	11	210.72
Re-organised Piecemeal Enclosure	54	4645.73
Small Assarts	10	198.11
Small Irregular Fields	25	208.37
Very Large Post-War Fields	56	3707.48
Totals for Fields and Enclosed Land	445	19185.51

	Count	Total Area (Ha)
Broad Type: Industrial		
HLC Type:		
Derelict Industrial Land	2	13.90
Engineering and Metal Working	1	0.77
Other Works	12	65.84
Post-1880s Industrial Complex	97	385.45
Pre-1880s Industrial Complex	8	105.24
Textiles, Boot & Shoe and Associated Industries	5	4.02
Totals for Industrial	125	575.22
Broad Type: Military		
HLC Type:		
Barracks/Training Ground	2	9.83
Former Ordnance Depot Now Used For Other Purposes	1	1.14
Military Airfield Abandoned	2	128.51
Totals for Military	5	139.48
Broad Type: Orchards and Allotments		
HLC Type:		
Post War Allotments	10	15.42
Post-1880s Nursery/Horticulture	14	37.07
Pre-War Allotments	16	28.76
Totals for Orchards and Allotments	40	81.24
Broad Type: Ornamental, Parkland and Recreational		
HLC Type:		
Cemeteries	15	29.11
Golf Course	10	304.50
Other Parkland	47	280.59
Parks and Gardens	17	503.11
Public Open Space	42	86.68
Sports Fields	74	320.59
Village Greens	2	2.92
Totals for Ornamental, Parkland and Recreational	207	1527.51

	Count	Total Area (Ha)
Broad Type: Settlement		
HLC Type:		
Country House	20	40.13
Farm Complex	149	207.31
Historic Settlement Core	57	302.43
Post 1970s Residential Development	297	1084.49
Pre-1880s Settlement Detached	41	50.99
Pre-1880s Settlement Semi Detached	8	8.85
Pre-1880s Settlement Terraced	35	33.74
Settlement 1st-2nd ed Detached	15	36.25
Settlement 1st-2nd ed Semi Detached	12	16.11
Settlement 1st-2nd ed Terraced	37	59.55
Settlement 2nd-3rd ed Detached	38	148.73
Settlement 2nd-3rd ed Semi Detached	23	55.42
Settlement 2nd-3rd ed Terraced	34	43.89
Settlement 3rd-4th ed Detached	29	81.62
Settlement 3rd-4th ed Semi Detached	42	164.23
Settlement 3rd-4th ed Terraced	17	21.79
Settlement Pre-1970s Detached	155	442.40
Settlement Pre-1970s Semi Detached	97	633.34
Settlement Pre-1970s Terraced	13	42.29
Totals for Settlement	1119	3445.98
Broad Type: Transportation		
HLC Type:		
Canal Locks/Basin	7	14.70
Major Road Junction	8	51.80
Train Stations/Sidings/Cuttings	6	20.96
Totals for Transportation	21	87.45
Broad Type: Unenclosed Land		
HLC Type:		
Heathland	6	52.01
Other Commons	1	1.47
Totals for Unenclosed Land	7	53.49

Appendix D: LLR HLC Charnwood Borough Area Analysis Report

	Count	Total Area (Ha)
Broad Type: Water and Valley Floor		
HLC Type:		
Artificial Lake/Pond	31	179.23
Miscellaneous Floodplain Fields	37	604.52
Reservoir	3	129.95
Totals for Water and Valley Floor	71	913.69
Broad Type: Woodland		
HLC Type:		
Broadleaved Ancient Woodland	19	239.63
Broadleaved Plantation	95	567.33
Broadleaved Woods with Sinuous Boundaries	10	61.33
Coniferous Plantation	17	93.94
Coniferous Woodland with Sinuous Boundaries	1	26.74
Mixed Plantation	16	78.74
Mixed Woods with Sinuous Boundaries	1	6.96
Other Plantation	142	382.92
Other Woods with Sinuous Boundaries	6	9.99
Replanted Ancient Woodlands	12	220.77
Totals for Woodland	319	1688.34

Leicestershire CC HNET HLC Area Analysis Report

Number of records: 3415

LLR HLC HARBOROUGH District Polygons

	Count	Total Area (Ha)
Broad Type: Civic and Commercial		
HLC Type:		
Commercial and Retail	63	94.04
Educational	38	63.22
Hospitals	7	6.95
Municipal and Civic	18	27.43
Religious	70	28.82
Totals for Civic and Commercial	196	220.46
Broad Type: Extractive and Landfill		
HLC Type:		
Abandoned/Restored Sand and Gravel Quarry	1	34.77
Landfill	1	2.78
Sand and Gravel Quarry	4	150.80
Totals for Extractive and Landfill	6	188.35
Broad Type: Fields and Enclosed Land		
HLC Type:		
Drained Wetlands	3	49.43
Large Assarts with Sinuous Boundaries	8	409.25
Large Irregular Fields	67	3324.91
Other Large Rectilinear Fields	43	1253.20
Other Small Rectilinear Fields	136	661.48
Paddocks and Closes	62	153.38
Piecemeal Enclosure	59	2240.73
Planned Enclosure	188	16206.97
Planned Enclosure Containing Ridge and Furrow	135	3679.53
Planned Woodland Clearance	8	359.10
Re-organised Piecemeal Enclosure	148	14802.57
Small Assarts	9	131.36
Small Irregular Fields	37	282.80
Very Large Post-War Fields	91	6961.93
Totals for Fields and Enclosed Land	994	50516.64

	Count	Total Area (Ha)
<i>Broad Type: Industrial</i>		
HLC Type:		
Other Works	16	27.40
Post-1880s Industrial Complex	29	368.92
Pre-1880s Industrial Complex	4	7.20
Textiles, Boot & Shoe and Associated Industries	1	0.94
Totals for Industrial	50	404.46
<i>Broad Type: Orchards and Allotments</i>		
HLC Type:		
Post War Allotments	16	13.55
Post-1880s Nursery/Horticulture	12	65.50
Post-1880s Orchards	2	22.01
Pre-1880s Nursery/Horticulture	2	2.17
Pre-War Allotments	6	12.03
Totals for Orchards and Allotments	38	115.26
<i>Broad Type: Ornamental, Parkland and Recreational</i>		
HLC Type:		
Cemeteries	8	9.57
Golf Course	6	239.84
Other Parkland	62	172.60
Parks and Gardens	39	817.12
Public Open Space	29	66.47
Sports Fields	45	157.15
Village Greens	2	1.50
Totals for Ornamental, Parkland and Recreational	191	1464.26

	Count	Total Area (Ha)
Broad Type: Settlement		
HLC Type:		
Country House	57	100.59
Farm Complex	379	460.60
Historic Settlement Core	112	563.48
Post 1960s Residential Development	306	787.69
Pre-1880s Settlement Detached	74	58.83
Pre-1880s Settlement Semi Detached	11	6.29
Pre-1880s Settlement Terraced	22	15.79
Settlement 1st-2nd ed Detached	11	10.71
Settlement 1st-2nd ed Semi Detached	8	7.93
Settlement 1st-2nd ed Terraced	17	22.58
Settlement 2nd-3rd ed Detached	21	24.74
Settlement 2nd-3rd ed Semi Detached	20	34.04
Settlement 2nd-3rd ed Terraced	4	3.87
Settlement 3rd-4th ed Detached	35	71.40
Settlement 3rd-4th ed Semi Detached	47	62.54
Settlement 3rd-4th ed Terraced	5	2.04
Settlement Pre-1970s Detached	160	292.54
Settlement Pre-1970s Semi Detached	83	176.76
Settlement Pre-1970s Terraced	21	23.25
Totals for Settlement	1393	2725.66
Broad Type: Transportation		
HLC Type:		
Canal Locks/Basin	5	11.12
Civil Airports/Airfields	3	482.79
Major Road Junction	4	35.40
Service Station	1	12.38
Train Stations/Sidings/Cuttings	1	9.92
Totals for Transportation	14	551.60
Broad Type: Water and Valley Floor		
HLC Type:		
Artificial Lake/Pond	29	52.56
Marsh	1	1.18
Miscellaneous Floodplain Fields	51	530.46
Natural Open Water	1	14.32
Reservoir	3	58.96
Totals for Water and Valley Floor	85	657.48

	Count	Total Area (Ha)
Broad Type: Woodland		
HLC Type:		
Broadleaved Ancient Woodland	25	398.48
Broadleaved Plantation	125	547.98
Broadleaved Woods with Sinuous Boundaries	8	36.77
Coniferous Plantation	7	25.30
Coniferous Woodland with Sinuous Boundaries	1	4.21
Mixed Ancient Woodlands	2	39.85
Mixed Plantation	31	113.30
Mixed Woods with Sinuous Boundaries	1	1.85
Other Plantation	238	499.94
Other Woods with Sinuous Boundaries	4	19.33
Replanted Ancient Woodlands	6	105.94
Totals for Woodland	448	1792.96

Leicestershire CC HNET HLC Area Analysis Report

Number of records: 2257

LLR HLC HINCKLEY AND BOSWORTH BOROUGH Polygons

HLE1331	HLE1331	1331	-150000	Count	Total Area (Ha)
Broad Type: Civic and Commercial					
HLC Type:					
	Commercial and Retail			27	42.14
	Educational			43	88.63
	Hospitals			9	13.18
	Municipal and Civic			19	16.78
	Religious			24	13.90
Totals for Civic and Commercial				122	174.63
Broad Type: Extractive and Landfill					
HLC Type:					
	Abandoned/Restored Clay Extraction			1	2.58
	Abandoned/Restored Deep Coal Mines			3	49.10
	Abandoned/Restored Stone Quarries			7	79.05
	Clay Extraction			1	13.43
	Landfill			1	12.51
	Sand and Gravel Quarry			3	59.67
	Stone Quarries			3	115.48
Totals for Extractive and Landfill				19	331.80
Broad Type: Fields and Enclosed Land					
HLC Type:					
	Drained Wetlands			1	9.54
	Large Assarts with Sinuous Boundaries			1	16.61
	Large Irregular Fields			27	1096.29
	Other Large Rectilinear Fields			19	1168.27
	Other Small Rectilinear Fields			82	564.57
	Paddocks and Closes			25	54.69
	Piecemeal Enclosure			96	4503.36
	Planned Enclosure			81	4185.44
	Planned Enclosure Containing Ridge and Furrow			13	396.79
	Planned Woodland Clearance			11	132.08
	Rectilinear Squatter Enclosure			1	0.71
	Re-organised Piecemeal Enclosure			66	4772.15
	Small Assarts			8	201.61
	Small Irregular Fields			23	156.91
	Very Large Post-War Fields			76	5404.78
Totals for Fields and Enclosed Land				530	22663.81

	Count	Total Area (Ha)
Broad Type: Industrial		
HLC Type:		
Other Works	5	8.84
Post-1880s Industrial Complex	70	433.63
Pre-1880s Industrial Complex	3	2.42
Textiles, Boot & Shoe and Associated Industries	6	9.08
Totals for Industrial	84	453.96
Broad Type: Military		
HLC Type:		
Military Airfield Abandoned	1	193.62
Totals for Military	1	193.62
Broad Type: Orchards and Allotments		
HLC Type:		
Post War Allotments	15	23.94
Post-1880s Nursery/Horticulture	5	17.45
Pre-War Allotments	7	17.01
Totals for Orchards and Allotments	27	58.40
Broad Type: Ornamental, Parkland and Recreational		
HLC Type:		
Cemeteries	13	17.91
Golf Course	3	108.55
Other Parkland	55	202.53
Parks and Gardens	7	104.00
Public Open Space	17	60.18
Sports Fields	41	219.92
Totals for Ornamental, Parkland and Recreational	136	713.08

	Count	Total Area (Ha)
Broad Type: Settlement		
HLC Type:		
Country House	23	58.76
Farm Complex	228	276.04
Historic Settlement Core	69	241.29
Post 1970s Residential Development	222	1228.11
Pre-1880s Settlement Detached	53	51.83
Pre-1880s Settlement Semi Detached	5	4.58
Pre-1880s Settlement Terraced	14	9.35
Settlement 1st-2nd ed Detached	6	5.36
Settlement 1st-2nd ed Terraced	32	38.33
Settlement 2nd-3rd ed Detached	11	18.99
Settlement 2nd-3rd ed Semi Detached	16	30.36
Settlement 2nd-3rd ed Terraced	16	21.33
Settlement 3rd-4th ed Detached	13	48.79
Settlement 3rd-4th ed Semi Detached	24	150.53
Settlement 3rd-4th ed Terraced	5	7.85
Settlement Pre-1970s Detached	159	423.73
Settlement Pre-1970s Semi Detached	100	370.08
Settlement Pre-1970s Terraced	17	21.70
Totals for Settlement	1013	2620.01
Broad Type: Transportation		
HLC Type:		
Canal Locks/Basin	3	6.31
Major Road Junction	4	38.97
Service Station	1	2.54
Train Stations/Sidings/Cuttings	2	1.82
Totals for Transportation	10	49.65
Broad Type: Unenclosed Land		
HLC Type:		
Other Commons	1	24.31
Totals for Unenclosed Land	1	24.31

	Count	Total Area (Ha)
Broad Type: Water and Valley Floor		
HLC Type:		
Artificial Lake/Pond	30	117.49
Miscellaneous Floodplain Fields	34	640.07
Reservoir	2	39.07
Totals for Water and Valley Floor	66	796.63
Broad Type: Woodland		
HLC Type:		
Broadleaved Ancient Woodland	13	145.45
Broadleaved Plantation	94	458.35
Broadleaved Woods with Sinuous Boundaries	5	25.04
Coniferous Plantation	10	27.07
Mixed Ancient Woodlands	1	9.11
Mixed Plantation	2	10.50
Other Plantation	113	516.19
Other Woods with Sinuous Boundaries	5	5.91
Replanted Ancient Woodlands	5	145.31
Totals for Woodland	248	1342.92

Leicestershire CC HNET HLC Area Analysis Report

Number of records: 2305

LLR HLC MELTON BOROUGH Polygons

	Count	Total Area (Ha)
Broad Type: Civic and Commercial		
HLC Type:		
Commercial and Retail	32	60.29
Educational	21	43.77
Hospitals	3	5.49
Municipal and Civic	10	15.64
Religious	48	21.40
Totals for Civic and Commercial	114	146.59
Broad Type: Extractive and Landfill		
HLC Type:		
Abandoned/Restored Stone Quarries	2	6.67
Clay Extraction	1	51.41
Sand and Gravel Quarry	1	13.44
Totals for Extractive and Landfill	4	71.52
Broad Type: Fields and Enclosed Land		
HLC Type:		
Drained Wetlands	1	19.85
Large Assarts with Sinuous Boundaries	2	54.78
Large Irregular Fields	34	1045.26
Other Large Rectilinear Fields	26	1405.82
Other Small Rectilinear Fields	119	671.95
Paddocks and Closes	60	155.53
Piecemeal Enclosure	43	2734.52
Planned Enclosure	134	14401.28
Planned Enclosure Containing Ridge and Furrow	78	2205.53
Planned Woodland Clearance	1	1.95
Re-organised Piecemeal Enclosure	102	10952.65
Small Assarts	4	125.57
Small Irregular Fields	25	196.76
Very Large Post-War Fields	76	7475.58
Totals for Fields and Enclosed Land	705	41447.02

	Count	Total Area (Ha)
<i>Broad Type: Industrial</i>		
HLC Type:		
Derelict Industrial Land	4	42.56
Other Works	16	27.21
Post-1880s Industrial Complex	33	188.89
Pre-1880s Industrial Complex	2	3.05
Totals for Industrial	55	261.71
<i>Broad Type: Military</i>		
HLC Type:		
Abandoned Ordnance Depot	1	8.48
Barracks/Training Ground	2	10.47
Military Airfield Abandoned	3	319.49
Totals for Military	6	338.45
<i>Broad Type: Orchards and Allotments</i>		
HLC Type:		
Post War Allotments	9	7.72
Post-1880s Nursery/Horticulture	8	65.24
Pre-1880s Nursery/Horticulture	1	1.04
Pre-War Allotments	14	19.34
Totals for Orchards and Allotments	32	93.34
<i>Broad Type: Ornamental, Parkland and Recreational</i>		
HLC Type:		
Cemeteries	6	6.23
Golf Course	4	192.56
Other Parkland	32	159.25
Parks and Gardens	21	363.31
Public Open Space	13	30.10
Racecourse	1	41.51
Sports Fields	34	108.03
Village Greens	1	0.42
Totals for Ornamental, Parkland and Recreational	112	901.41

Appendix G: LLR HLC Melton Borough Area Analysis Report

	Count	Total Area (Ha)
Broad Type: Settlement		
HLC Type:		
Country House	33	63.30
Farm Complex	298	368.47
Historic Settlement Core	85	496.91
Post 1970s Residential Development	121	349.57
Pre-1880s Settlement Detached	46	42.14
Pre-1880s Settlement Semi Detached	4	2.18
Pre-1880s Settlement Terraced	5	2.50
Settlement 1st-2nd ed Detached	16	13.68
Settlement 1st-2nd ed Semi Detached	9	11.17
Settlement 1st-2nd ed Terraced	7	12.45
Settlement 2nd-3rd ed Detached	10	21.27
Settlement 2nd-3rd ed Semi Detached	6	16.00
Settlement 2nd-3rd ed Terraced	7	7.43
Settlement 3rd-4th ed Detached	22	30.91
Settlement 3rd-4th ed Semi Detached	28	44.87
Settlement 3rd-4th ed Terraced	9	8.10
Settlement Pre-1970s Detached	101	186.33
Settlement Pre-1970s Semi Detached	54	117.41
Settlement Pre-1970s Terraced	13	29.89
Totals for Settlement	874	1824.57
Broad Type: Transportation		
HLC Type:		
Civil Airports/Airfields	1	97.30
Train Stations/Sidings/Cuttings	4	7.12
Totals for Transportation	5	104.42
Broad Type: Unenclosed Land		
HLC Type:		
Other Commons	1	1.94
Totals for Unenclosed Land	1	1.94
Broad Type: Water and Valley Floor		
HLC Type:		
Artificial Lake/Pond	12	83.01
Miscellaneous Floodplain Fields	31	480.47
Reservoir	4	43.62
Totals for Water and Valley Floor	47	607.10

	Count	Total Area (Ha)
Broad Type: Woodland		
HLC Type:		
Broadleaved Ancient Woodland	7	66.75
Broadleaved Plantation	113	960.12
Broadleaved Woods with Sinuous Boundaries	9	78.79
Coniferous Plantation	13	60.25
Mixed Plantation	21	234.87
Other Plantation	181	445.37
Other Woods with Sinuous Boundaries	6	13.18
Totals for Woodland	350	1859.34

Leicestershire CC HNET HLC Area Analysis Report

Number of records: 2536

LLR HLC NORTH WEST LEICESTERSHIRE DISTRICT Polygons

	Count	Total Area (Ha)
Broad Type: Civic and Commercial		
HLC Type:		
Commercial and Retail	22	99.08
Educational	43	76.46
Hospitals	5	5.37
Municipal and Civic	20	26.54
Religious	14	14.92
Totals for Civic and Commercial	104	222.36
Broad Type: Extractive and Landfill		
HLC Type:		
Abandoned/Restored Clay Extraction	1	5.95
Abandoned/Restored Deep Coal Mines	4	21.86
Abandoned/Restored Open Cast Coal Mines	5	42.51
Clay Extraction	16	140.41
Open Cast Coal Mines	4	172.21
Sand and Gravel Quarry	3	24.23
Stone Quarries	9	264.18
Totals for Extractive and Landfill	42	671.34

	Count	Total Area (Ha)
Broad Type: Fields and Enclosed Land		
HLC Type:		
Drained Wetlands	5	69.93
Irregular Squatter Enclosure	5	9.97
Large Assarts with Sinuous Boundaries	3	144.03
Large Irregular Fields	33	1000.18
Other Large Rectilinear Fields	20	921.94
Other Small Rectilinear Fields	73	697.89
Paddocks and Closes	29	94.12
Piecemeal Enclosure	82	2263.46
Planned Enclosure	146	4508.31
Planned Enclosure Containing Ridge and Furrow	10	133.00
Planned Woodland Clearance	14	336.13
Rectilinear Squatter Enclosure	1	5.79
Re-organised Piecemeal Enclosure	86	4551.63
Small Assarts	15	261.15
Small Irregular Fields	56	429.21
Very Large Post-War Fields	62	4068.19
Totals for Fields and Enclosed Land	640	19494.92
Broad Type: Industrial		
HLC Type:		
Derelict Industrial Land	2	81.64
Other Works	12	41.32
Post-1880s Industrial Complex	70	589.99
Pre-1880s Industrial Complex	6	32.22
Textiles, Boot & Shoe and Associated Industries	3	3.58
Totals for Industrial	93	748.75
Broad Type: Orchards and Allotments		
HLC Type:		
Post War Allotments	8	4.10
Post-1880s Nursery/Horticulture	6	14.06
Post-1880s Orchards	1	0.56
Pre-War Allotments	15	28.51
Totals for Orchards and Allotments	30	47.24

	Count	Total Area (Ha)
Broad Type: Ornamental, Parkland and Recreational		
HLC Type:		
Cemeteries	11	22.48
Golf Course	5	102.66
Other Parkland	43	193.52
Parks and Gardens	13	188.15
Public Open Space	31	118.23
Sports Fields	55	308.09
Village Greens	2	1.29
Totals for Ornamental, Parkland and Recreational	160	934.43
Broad Type: Settlement		
HLC Type:		
Country House	17	26.37
Farm Complex	171	230.70
Historic Settlement Core	51	262.06
Post 1970s Residential Development	214	666.13
Pre-1880s Settlement Detached	110	137.27
Pre-1880s Settlement Semi Detached	6	6.10
Pre-1880s Settlement Terraced	43	57.12
Settlement 1st-2nd ed Detached	4	5.94
Settlement 1st-2nd ed Semi Detached	3	3.00
Settlement 1st-2nd ed Terraced	39	55.80
Settlement 2nd-3rd ed Detached	13	30.02
Settlement 2nd-3rd ed Semi Detached	34	65.56
Settlement 2nd-3rd ed Terraced	21	37.14
Settlement 3rd-4th ed Detached	3	8.50
Settlement 3rd-4th ed Semi Detached	8	33.37
Settlement 3rd-4th ed Terraced	2	2.66
Settlement Pre-1970s Detached	155	337.19
Settlement Pre-1970s Semi Detached	116	362.28
Settlement Pre-1970s Terraced	15	29.35
Totals for Settlement	1025	2356.55

	Count	Total Area (Ha)
Broad Type: Transportation		
HLC Type:		
Canal Locks/Basin	3	16.00
Civil Airports/Airfields	1	368.97
Major Road Junction	10	160.07
Service Station	1	1.62
Train Stations/Sidings/Cuttings	5	11.66
Totals for Transportation	20	558.32
Broad Type: Unenclosed Land		
HLC Type:		
Heathland	3	104.02
Other Commons	1	0.25
Totals for Unenclosed Land	4	104.27
Broad Type: Water and Valley Floor		
HLC Type:		
Artificial Lake/Pond	30	136.33
Marsh	3	7.83
Miscellaneous Floodplain Fields	31	543.28
Reservoir	3	43.79
Totals for Water and Valley Floor	67	731.23
Broad Type: Woodland		
HLC Type:		
Broadleaved Ancient Woodland	19	289.96
Broadleaved Plantation	83	429.64
Broadleaved Woods with Sinuous Boundaries	4	33.41
Coniferous Plantation	8	32.64
Coniferous Woodland with Sinuous Boundaries	2	25.30
Mixed Ancient Woodlands	1	9.55
Mixed Plantation	21	104.35
Mixed Woods with Sinuous Boundaries	2	4.68
Other Plantation	194	942.35
Other Woods with Sinuous Boundaries	5	17.64
Replanted Ancient Woodlands	12	109.60
Totals for Woodland	351	1999.14

Leicestershire CC HNET HLC Area Analysis Report

Number of records: 507

LLR HLC OADBY AND WIGSTON BOROUGH Polygons

	Count	Total Area (Ha)
Broad Type: Civic and Commercial		
HLC Type:		
Commercial and Retail	30	33.07
Educational	21	54.14
Hospitals	3	4.80
Municipal and Civic	12	13.69
Religious	11	2.76
Totals for Civic and Commercial	77	108.46
Broad Type: Fields and Enclosed Land		
HLC Type:		
Large Irregular Fields	3	53.40
Other Large Rectilinear Fields	2	23.34
Other Small Rectilinear Fields	3	21.67
Piecemeal Enclosure	1	9.63
Planned Enclosure	1	33.84
Planned Enclosure Containing Ridge and Furrow	1	16.76
Re-organised Piecemeal Enclosure	3	328.15
Small Irregular Fields	2	10.66
Very Large Post-War Fields	2	93.14
Totals for Fields and Enclosed Land	18	590.59
Broad Type: Industrial		
HLC Type:		
Derelict Industrial Land	1	3.87
Other Works	3	12.33
Post-1880s Industrial Complex	24	83.04
Pre-1880s Industrial Complex	1	0.67
Textiles, Boot & Shoe and Associated Industries	1	0.14
Totals for Industrial	30	100.06
Broad Type: Military		
HLC Type:		
Barracks/Training Ground	1	2.43
Totals for Military	1	2.43

	Count	Total Area (Ha)
Broad Type: Orchards and Allotments		
HLC Type:		
Post War Allotments	1	0.28
Post-1880s Nursery/Horticulture	1	0.76
Pre-War Allotments	3	8.99
Totals for Orchards and Allotments	5	10.02
Broad Type: Ornamental, Parkland and Recreational		
HLC Type:		
Cemeteries	3	6.77
Golf Course	3	87.20
Other Parkland	15	68.19
Public Open Space	24	44.36
Racecourse	1	27.33
Sports Fields	16	83.03
Totals for Ornamental, Parkland and Recreational	62	316.88
Broad Type: Settlement		
HLC Type:		
Country House	1	0.19
Farm Complex	3	8.15
Historic Settlement Core	8	25.30
Post 1960s Residential Development	58	311.51
Pre-1880s Settlement Detached	7	4.83
Pre-1880s Settlement Semi Detached	1	0.36
Pre-1880s Settlement Terraced	14	6.83
Settlement 1st-2nd ed Detached	5	2.34
Settlement 1st-2nd ed Semi Detached	2	1.26
Settlement 1st-2nd ed Terraced	17	16.75
Settlement 2nd-3rd ed Detached	18	65.19
Settlement 2nd-3rd ed Semi Detached	23	37.19
Settlement 2nd-3rd ed Terraced	13	7.72
Settlement 3rd-4th ed Detached	10	18.98
Settlement 3rd-4th ed Semi Detached	22	38.48
Settlement 3rd-4th ed Terraced	11	18.23
Settlement Pre-1970s Detached	42	156.55
Settlement Pre-1970s Semi Detached	38	318.08
Settlement Pre-1970s Terraced	10	10.49
Totals for Settlement	303	1048.43

	Count	Total Area (Ha)
Broad Type: Transportation		
HLC Type:		
Train Stations/Sidings/Cuttings	1	3.91
Totals for Transportation	1	3.91
Broad Type: Water and Valley Floor		
HLC Type:		
Artificial Lake/Pond	3	6.23
Miscellaneous Floodplain Fields	2	115.52
Totals for Water and Valley Floor	5	121.75
Broad Type: Woodland		
HLC Type:		
Broadleaved Plantation	1	5.47
Other Plantation	4	5.91
Totals for Woodland	5	11.38

Leicestershire CC HNET HLC Area Analysis Report

Number of records: 2230

LLR HLC LEICESTER CITY Polygons

	Count	Total Area (Ha)
Broad Type: Civic and Commercial		
HLC Type:		
Commercial and Retail	219	392.94
Educational	120	219.11
Hospitals	40	103.65
Municipal and Civic	98	116.68
Religious	75	27.55
Totals for Civic and Commercial	552	859.94
Broad Type: Fields and Enclosed Land		
HLC Type:		
Large Irregular Fields	2	42.55
Other Small Rectilinear Fields	3	15.66
Paddocks and Closes	1	1.84
Planned Enclosure	6	215.05
Planned Enclosure Containing Ridge and Furrow	2	33.45
Re-organised Piecemeal Enclosure	2	67.97
Small Irregular Fields	2	18.19
Very Large Post-War Fields	1	10.84
Totals for Fields and Enclosed Land	19	405.55
Broad Type: Industrial		
HLC Type:		
Derelict Industrial Land	4	7.38
Engineering and Metal Working	3	9.09
Other Works	5	15.88
Post-1880s Industrial Complex	121	563.11
Pre-1880s Industrial Complex	2	2.28
Textiles, Boot & Shoe and Associated Industries	8	9.74
Totals for Industrial	143	607.48
Broad Type: Orchards and Allotments		
HLC Type:		
Post War Allotments	13	30.66
Post-1880s Nursery/Horticulture	1	0.92
Pre-1880s Nursery/Horticulture	1	2.48
Pre-War Allotments	27	95.92
Totals for Orchards and Allotments	42	129.99

	Count	Total Area (Ha)
Broad Type: Ornamental, Parkland and Recreational		
HLC Type:		
Cemeteries	7	50.08
Golf Course	4	175.64
Other Parkland	95	667.75
Parks and Gardens	11	125.59
Public Open Space	64	203.94
Sports Fields	63	272.63
Village Greens	1	1.52
Totals for Ornamental, Parkland and Recreational	245	1497.16
Broad Type: Settlement		
HLC Type:		
Country House	11	9.31
Farm Complex	7	6.46
Historic Settlement Core	9	20.92
Post 1970s Residential Development	226	837.33
Pre-1880s Settlement Detached	27	26.01
Pre-1880s Settlement Semi Detached	10	9.18
Pre-1880s Settlement Terraced	76	100.38
Settlement 1st-2nd ed Detached	10	16.27
Settlement 1st-2nd ed Semi Detached	12	11.65
Settlement 1st-2nd ed Terraced	88	281.36
Settlement 2nd-3rd ed Detached	60	145.33
Settlement 2nd-3rd ed Semi Detached	122	399.42
Settlement 2nd-3rd ed Terraced	89	117.22
Settlement 3rd-4th ed Detached	32	51.87
Settlement 3rd-4th ed Semi Detached	100	451.55
Settlement 3rd-4th ed Terraced	63	117.06
Settlement Pre-1970s Detached	56	147.32
Settlement Pre-1970s Semi Detached	90	533.94
Settlement Pre-1970s Terraced	95	274.61
Totals for Settlement	1183	3557.17

	Count	Total Area (Ha)
Broad Type: Transportation		
HLC Type:		
Canal Locks/Basin	2	8.93
Major Road Junction	1	4.51
Train Stations/Sidings/Cuttings	3	17.23
Totals for Transportation	6	30.67
Broad Type: Water and Valley Floor		
HLC Type:		
Artificial Lake/Pond	2	7.03
Miscellaneous Floodplain Fields	1	47.57
Totals for Water and Valley Floor	3	54.61
Broad Type: Woodland		
HLC Type:		
Broadleaved Ancient Woodland	1	4.28
Broadleaved Plantation	9	28.48
Mixed Plantation	1	2.71
Other Plantation	25	35.73
Other Woods with Sinuous Boundaries	1	1.08
Totals for Woodland	37	72.27

Leicestershire CC HNET HLC Area Analysis Report

Number of records: 1994

LLR HLC RUTLAND COUNTY Polygons

	Count	Total Area (Ha)
Broad Type: Civic and Commercial		
HLC Type:		
Commercial and Retail	24	29.81
Educational	38	68.24
Hospitals	2	2.32
Municipal and Civic	13	49.06
Religious	47	17.30
Totals for Civic and Commercial	124	166.74
Broad Type: Extractive and Landfill		
HLC Type:		
Abandoned/Restored Stone Quarries	8	39.14
Stone Quarries	5	317.68
Totals for Extractive and Landfill	13	356.82
Broad Type: Fields and Enclosed Land		
HLC Type:		
Drained Wetlands	2	29.22
Large Assarts with Sinuous Boundaries	5	414.87
Large Irregular Fields	34	1141.28
Other Large Rectilinear Fields	7	254.41
Other Small Rectilinear Fields	45	139.03
Paddocks and Closes	81	295.65
Piecemeal Enclosure	27	822.53
Planned Enclosure	174	12998.42
Planned Enclosure Containing Ridge and Furrow	91	1719.10
Planned Woodland Clearance	11	460.97
Re-organised Piecemeal Enclosure	34	2119.10
Small Assarts	3	31.25
Small Irregular Fields	21	74.68
Very Large Post-War Fields	107	10797.43
Totals for Fields and Enclosed Land	642	31297.95
Broad Type: Industrial		
HLC Type:		
Other Works	14	27.50
Post-1880s Industrial Complex	17	123.53
Totals for Industrial	31	151.03

	Count	Total Area (Ha)
Broad Type: Military		
HLC Type:		
Barracks/Training Ground	2	58.23
Military Airfield	1	312.23
Military Airfield Abandoned	2	471.27
Totals for Military	5	841.72
Broad Type: Orchards and Allotments		
HLC Type:		
Post War Allotments	8	6.50
Post-1880s Nursery/Horticulture	5	10.73
Post-1880s Orchards	1	0.33
Pre-1880s Nursery/Horticulture	1	2.96
Pre-War Allotments	10	16.57
Totals for Orchards and Allotments	25	37.08
Broad Type: Ornamental, Parkland and Recreational		
HLC Type:		
Cemeteries	12	7.14
Golf Course	6	310.83
Other Parkland	39	261.22
Parks and Gardens	16	183.23
Public Open Space	5	17.60
Sports Fields	28	108.56
Village Greens	1	0.33
Totals for Ornamental, Parkland and Recreational	107	888.91

	Count	Total Area (Ha)
Broad Type: Settlement		
HLC Type:		
Country House	24	46.25
Farm Complex	167	216.27
Historic Settlement Core	76	475.08
Post 1970s Residential Development	208	602.39
Pre-1880s Settlement Detached	46	40.33
Pre-1880s Settlement Semi Detached	3	2.31
Pre-1880s Settlement Terraced	4	1.82
Settlement 1st-2nd ed Detached	3	4.25
Settlement 1st-2nd ed Semi Detached	1	0.55
Settlement 2nd-3rd ed Detached	5	2.70
Settlement 2nd-3rd ed Terraced	3	2.47
Settlement 3rd-4th ed Detached	2	0.93
Settlement 3rd-4th ed Semi Detached	2	0.89
Settlement 3rd-4th ed Terraced	1	0.77
Settlement Pre-1970s Detached	19	28.00
Settlement Pre-1970s Semi Detached	22	31.00
Settlement Pre-1970s Terraced	10	6.09
Totals for Settlement	596	1462.09
Broad Type: Transportation		
HLC Type:		
Major Road Junction	3	16.83
Train Stations/Sidings/Cuttings	4	14.02
Totals for Transportation	7	30.85
Broad Type: Water and Valley Floor		
HLC Type:		
Artificial Lake/Pond	12	24.60
Marsh	4	23.30
Miscellaneous Floodplain Fields	39	570.40
Reservoir	12	1340.65
Totals for Water and Valley Floor	67	1958.95

	Count	Total Area (Ha)
Broad Type: Woodland		
HLC Type:		
Broadleaved Ancient Woodland	21	416.18
Broadleaved Plantation	81	527.51
Broadleaved Woods with Sinuous Boundaries	6	39.69
Coniferous Plantation	10	64.43
Mixed Plantation	17	144.73
Mixed Woods with Sinuous Boundaries	1	7.03
Other Plantation	212	550.30
Other Woods with Sinuous Boundaries	2	5.62
Replanted Ancient Woodlands	27	530.26
Totals for Woodland	377	2285.75

Leicestershire CC HNET HLC Area Analysis Report

Number of records: 2402

LLR HLC NATIONAL FOREST Polygons

	Count	Total Area (Ha)
Broad Type: Civic and Commercial		
HLC Type:		
Commercial and Retail	12	30.76
Educational	42	85.06
Hospitals	6	6.92
Municipal and Civic	21	26.68
Religious	10	10.57
Totals for Civic and Commercial	91	159.99
 Broad Type: Extractive and Landfill		
HLC Type:		
Abandoned/Restored Clay Extraction	1	5.95
Abandoned/Restored Deep Coal Mines	6	65.70
Abandoned/Restored Open Cast Coal Mines	5	42.51
Abandoned/Restored Stone Quarries	7	79.05
Clay Extraction	17	153.84
Landfill	2	20.52
Open Cast Coal Mines	4	172.21
Stone Quarries	10	331.80
Totals for Extractive and Landfill	52	871.58

	Count	Total Area (Ha)
Broad Type: Fields and Enclosed Land		
HLC Type:		
Drained Wetlands	3	50.78
Irregular Squatter Enclosure	5	9.97
Large Assarts with Sinuous Boundaries	2	37.50
Large Irregular Fields	28	986.10
Other Large Rectilinear Fields	16	723.70
Other Small Rectilinear Fields	76	930.58
Paddocks and Closes	11	36.15
Piecemeal Enclosure	69	1894.66
Planned Enclosure	157	5073.82
Planned Enclosure Containing Ridge and Furrow	11	151.12
Planned Woodland Clearance	25	492.52
Rectilinear Squatter Enclosure	1	5.79
Re-organised Piecemeal Enclosure	55	2442.75
Small Assarts	23	535.19
Small Irregular Fields	61	485.55
Very Large Post-War Fields	34	1641.25
Totals for Fields and Enclosed Land	577	15497.41
Broad Type: Industrial		
HLC Type:		
Derelict Industrial Land	1	10.91
Other Works	10	30.58
Post-1880s Industrial Complex	71	524.17
Pre-1880s Industrial Complex	4	29.44
Textiles, Boot & Shoe and Associated Industries	1	2.59
Totals for Industrial	87	597.69
Broad Type: Military		
HLC Type:		
Barracks/Training Ground	1	9.05
Totals for Military	1	9.05
Broad Type: Orchards and Allotments		
HLC Type:		
Post War Allotments	5	3.85
Post-1880s Nursery/Horticulture	8	13.22
Pre-War Allotments	14	24.14
Totals for Orchards and Allotments	27	41.22

	Count	Total Area (Ha)
Broad Type: Ornamental, Parkland and Recreational		
HLC Type:		
Cemeteries	10	21.87
Golf Course	8	185.71
Other Parkland	46	223.48
Parks and Gardens	17	475.35
Public Open Space	26	112.36
Sports Fields	52	191.91
Totals for Ornamental, Parkland and Recreational	159	1210.68
Broad Type: Settlement		
HLC Type:		
Country House	18	22.60
Farm Complex	137	185.36
Historic Settlement Core	37	165.73
Post 1970s Residential Development	175	647.19
Pre-1880s Settlement Detached	93	115.78
Pre-1880s Settlement Semi Detached	5	5.72
Pre-1880s Settlement Terraced	40	55.45
Settlement 1st-2nd ed Detached	8	15.15
Settlement 1st-2nd ed Semi Detached	3	3.00
Settlement 1st-2nd ed Terraced	39	59.66
Settlement 2nd-3rd ed Detached	16	37.55
Settlement 2nd-3rd ed Semi Detached	38	72.24
Settlement 2nd-3rd ed Terraced	27	43.45
Settlement 3rd-4th ed Detached	3	8.50
Settlement 3rd-4th ed Semi Detached	8	33.37
Settlement 3rd-4th ed Terraced	1	2.15
Settlement Pre-1970s Detached	139	388.10
Settlement Pre-1970s Semi Detached	102	371.25
Settlement Pre-1970s Terraced	13	24.26
Totals for Settlement	902	2256.52

	Count	Total Area (Ha)
Broad Type: Transportation		
HLC Type:		
Canal Locks/Basin	1	0.98
Major Road Junction	7	47.55
Service Station	1	2.54
Train Stations/Sidings/Cuttings	3	9.10
Totals for Transportation	12	60.18
 Broad Type: Unenclosed Land		
HLC Type:		
Heathland	9	156.03
Other Commons	1	0.25
Totals for Unenclosed Land	10	156.28
 Broad Type: Water and Valley Floor		
HLC Type:		
Artificial Lake/Pond	26	89.67
Marsh	1	2.69
Miscellaneous Floodplain Fields	13	137.30
Reservoir	5	131.69
Totals for Water and Valley Floor	45	361.35
 Broad Type: Woodland		
HLC Type:		
Broadleaved Ancient Woodland	27	378.23
Broadleaved Plantation	101	559.11
Broadleaved Woods with Sinuous Boundaries	16	95.83
Coniferous Plantation	23	122.67
Coniferous Woodland with Sinuous Boundaries	3	52.04
Mixed Ancient Woodlands	1	9.55
Mixed Plantation	16	108.01
Other Plantation	228	1375.92
Other Woods with Sinuous Boundaries	4	13.47
Replanted Ancient Woodlands	20	417.09
Totals for Woodland	439	3131.91

Leicestershire CC HNET HLC Area Analysis Report

Number of records: 150

BELVOIR SCARP LCA Polygons

	Count	Total Area (Ha)
Broad Type: Civic and Commercial		
HLC Type:		
Educational	1	1.02
Religious	1	0.37
Totals for Civic and Commercial	2	1.38
Broad Type: Fields and Enclosed Land		
HLC Type:		
Large Assarts with Sinuous Boundaries	1	6.26
Large Irregular Fields	5	87.41
Other Large Rectilinear Fields	6	414.08
Other Small Rectilinear Fields	5	52.95
Paddocks and Closes	3	20.52
Piecemeal Enclosure	2	23.57
Planned Enclosure	9	556.72
Planned Enclosure Containing Ridge and Furrow	2	22.85
Re-organised Piecemeal Enclosure	5	236.51
Small Assarts	4	125.57
Small Irregular Fields	4	33.51
Very Large Post-War Fields	5	340.93
Totals for Fields and Enclosed Land	51	1920.88
Broad Type: Industrial		
HLC Type:		
Derelict Industrial Land	1	1.03
Post-1880s Industrial Complex	1	1.40
Pre-1880s Industrial Complex	1	2.04
Totals for Industrial	3	4.47
Broad Type: Ornamental, Parkland and Recreational		
HLC Type:		
Cemeteries	1	0.26
Other Parkland	2	1.64
Parks and Gardens	1	16.87
Village Greens	1	0.42
Totals for Ornamental, Parkland and Recreational	5	19.18

	Count	Total Area (Ha)
Broad Type: Settlement		
HLC Type:		
Country House	3	6.27
Farm Complex	18	20.77
Historic Settlement Core	2	8.75
Post 1970s Residential Development	4	2.85
Pre-1880s Settlement Detached	2	3.49
Pre-1880s Settlement Semi Detached	1	0.62
Settlement 1st-2nd ed Detached	1	0.74
Settlement 3rd-4th ed Detached	1	0.41
Settlement 3rd-4th ed Semi Detached	1	0.65
Settlement Pre-1970s Detached	8	6.47
Settlement Pre-1970s Semi Detached	1	1.81
Settlement Pre-1970s Terraced	1	0.42
Totals for Settlement	43	53.26
 Broad Type: Transportation		
HLC Type:		
Train Stations/Sidings/Cuttings	1	3.83
Totals for Transportation	1	3.83
 Broad Type: Woodland		
HLC Type:		
Broadleaved Ancient Woodland	2	14.39
Broadleaved Plantation	18	165.67
Broadleaved Woods with Sinuous Boundaries	2	23.44
Coniferous Plantation	4	22.31
Mixed Plantation	8	173.20
Other Plantation	11	27.12
Totals for Woodland	45	426.13

Leicestershire CC HNET HLC Area Analysis Report

Number of records: 1491

CHARWOOD FOREST LCA Polygons

	Count	Total Area (Ha)
Broad Type: Civic and Commercial		
HLC Type:		
Commercial and Retail	12	29.56
Educational	30	80.97
Hospitals	3	3.92
Municipal and Civic	7	6.35
Religious	8	9.89
Totals for Civic and Commercial	60	130.69
Broad Type: Extractive and Landfill		
HLC Type:		
Abandoned/Restored Stone Quarries	8	94.02
Landfill	2	20.52
Stone Quarries	15	347.55
Totals for Extractive and Landfill	25	462.08
Broad Type: Fields and Enclosed Land		
HLC Type:		
Drained Wetlands	1	4.16
Irregular Squatter Enclosure	2	3.26
Large Assarts with Sinuous Boundaries	5	172.67
Large Irregular Fields	12	457.25
Other Large Rectilinear Fields	8	261.09
Other Small Rectilinear Fields	46	429.49
Paddocks and Closes	4	6.37
Piecemeal Enclosure	16	585.25
Planned Enclosure	101	3963.56
Planned Enclosure Containing Ridge and Furrow	7	63.95
Planned Woodland Clearance	17	321.12
Re-organised Piecemeal Enclosure	16	830.13
Small Assarts	12	289.12
Small Irregular Fields	23	178.16
Very Large Post-War Fields	12	480.67
Totals for Fields and Enclosed Land	282	8046.24

	Count	Total Area (Ha)
Broad Type: Industrial		
HLC Type:		
Derelict Industrial Land	1	10.67
Other Works	7	22.74
Post-1880s Industrial Complex	30	79.95
Pre-1880s Industrial Complex	3	35.37
Totals for Industrial	41	148.73
 Broad Type: Military		
HLC Type:		
Barracks/Training Ground	1	9.05
Totals for Military	1	9.05
 Broad Type: Orchards and Allotments		
HLC Type:		
Post War Allotments	4	5.90
Post-1880s Nursery/Horticulture	4	4.28
Pre-War Allotments	10	19.22
Totals for Orchards and Allotments	18	29.40
 Broad Type: Ornamental, Parkland and Recreational		
HLC Type:		
Cemeteries	8	16.04
Golf Course	8	171.70
Other Parkland	25	171.04
Parks and Gardens	14	465.33
Public Open Space	17	42.64
Sports Fields	39	154.82
Village Greens	2	2.92
Totals for Ornamental, Parkland and Recreational	113	1024.49

	Count	Total Area (Ha)
Broad Type: Settlement		
HLC Type:		
Country House	15	24.72
Farm Complex	73	93.20
Historic Settlement Core	30	105.41
Post 1970s Residential Development	133	691.79
Pre-1880s Settlement Detached	33	41.57
Pre-1880s Settlement Semi Detached	1	0.92
Pre-1880s Settlement Terraced	15	13.04
Settlement 1st-2nd ed Detached	8	18.04
Settlement 1st-2nd ed Semi Detached	5	6.30
Settlement 1st-2nd ed Terraced	14	16.37
Settlement 2nd-3rd ed Detached	25	94.89
Settlement 2nd-3rd ed Semi Detached	17	24.85
Settlement 2nd-3rd ed Terraced	15	16.66
Settlement 3rd-4th ed Detached	5	12.18
Settlement 3rd-4th ed Semi Detached	8	38.07
Settlement 3rd-4th ed Terraced	5	6.23
Settlement Pre-1970s Detached	105	407.00
Settlement Pre-1970s Semi Detached	69	403.98
Settlement Pre-1970s Terraced	8	26.18
Totals for Settlement	584	2041.40
Broad Type: Transportation		
HLC Type:		
Major Road Junction	9	61.37
Service Station	1	2.54
Train Stations/Sidings/Cuttings	2	5.34
Totals for Transportation	12	69.25
Broad Type: Unenclosed Land		
HLC Type:		
Heathland	9	156.03
Other Commons	1	1.47
Totals for Unenclosed Land	10	157.51

	Count	Total Area (Ha)
Broad Type: Water and Valley Floor		
HLC Type:		
Artificial Lake/Pond	8	22.27
Miscellaneous Floodplain Fields	13	115.99
Reservoir	4	163.49
Totals for Water and Valley Floor	25	301.75
Broad Type: Woodland		
HLC Type:		
Broadleaved Ancient Woodland	28	401.37
Broadleaved Plantation	94	519.03
Broadleaved Woods with Sinuous Boundaries	15	105.21
Coniferous Plantation	22	109.46
Coniferous Woodland with Sinuous Boundaries	2	32.45
Mixed Plantation	17	85.42
Mixed Woods with Sinuous Boundaries	1	6.96
Other Plantation	119	400.58
Other Woods with Sinuous Boundaries	5	8.06
Replanted Ancient Woodlands	17	386.79
Totals for Woodland	320	2055.33

Leicestershire CC HNET HLC Area Analysis Report

Number of records: 761

COTTESMORE PLATEAU LCA Polygons

	Count	Total Area (Ha)
Broad Type: Civic and Commercial		
HLC Type:		
Commercial and Retail	11	8.12
Educational	8	17.02
Municipal and Civic	3	26.17
Religious	15	5.71
Totals for Civic and Commercial	37	57.02
Broad Type: Extractive and Landfill		
HLC Type:		
Abandoned/Restored Stone Quarries	7	34.80
Stone Quarries	4	309.83
Totals for Extractive and Landfill	11	344.63
Broad Type: Fields and Enclosed Land		
HLC Type:		
Large Assarts with Sinuous Boundaries	3	102.84
Large Irregular Fields	17	434.84
Other Large Rectilinear Fields	8	529.03
Other Small Rectilinear Fields	19	56.23
Paddocks and Closes	21	100.87
Piecemeal Enclosure	8	357.64
Planned Enclosure	56	6624.39
Planned Enclosure Containing Ridge and Furrow	9	67.16
Planned Woodland Clearance	6	221.17
Re-organised Piecemeal Enclosure	11	1051.30
Small Assarts	3	31.25
Small Irregular Fields	6	23.45
Very Large Post-War Fields	46	5054.86
Totals for Fields and Enclosed Land	213	14655.03
Broad Type: Industrial		
HLC Type:		
Other Works	4	4.62
Post-1880s Industrial Complex	7	67.77
Totals for Industrial	11	72.39

	Count	Total Area (Ha)
Broad Type: Military		
HLC Type:		
Barracks/Training Ground	2	58.23
Military Airfield	1	312.23
Military Airfield Abandoned	2	471.27
Totals for Military	5	841.72
Broad Type: Orchards and Allotments		
HLC Type:		
Post War Allotments	1	0.89
Post-1880s Nursery/Horticulture	2	4.18
Pre-1880s Nursery/Horticulture	1	2.96
Pre-War Allotments	1	2.05
Totals for Orchards and Allotments	5	10.07
Broad Type: Ornamental, Parkland and Recreational		
HLC Type:		
Cemeteries	5	2.21
Golf Course	4	232.67
Other Parkland	8	24.05
Parks and Gardens	8	186.96
Public Open Space	2	1.60
Sports Fields	12	36.02
Totals for Ornamental, Parkland and Recreational	39	483.51
Broad Type: Settlement		
HLC Type:		
Country House	8	16.90
Farm Complex	74	120.26
Historic Settlement Core	23	147.92
Post 1970s Residential Development	73	190.92
Pre-1880s Settlement Detached	21	17.38
Pre-1880s Settlement Semi Detached	2	1.31
Pre-1880s Settlement Terraced	3	1.98
Settlement 1st-2nd ed Detached	3	3.07
Settlement 1st-2nd ed Semi Detached	2	2.99
Settlement 3rd-4th ed Terraced	2	1.19
Settlement Pre-1970s Detached	5	11.67
Settlement Pre-1970s Semi Detached	5	4.90
Settlement Pre-1970s Terraced	2	1.27
Totals for Settlement	223	521.75

	Count	Total Area (Ha)
Broad Type: Transportation		
HLC Type:		
Civil Airports/Airfields	1	97.30
Major Road Junction	2	10.99
Totals for Transportation	3	108.29
Broad Type: Water and Valley Floor		
HLC Type:		
Artificial Lake/Pond	10	21.88
Miscellaneous Floodplain Fields	14	134.68
Totals for Water and Valley Floor	24	156.56
Broad Type: Woodland		
HLC Type:		
Broadleaved Ancient Woodland	14	338.77
Broadleaved Plantation	47	384.06
Broadleaved Woods with Sinuous Boundaries	4	27.94
Coniferous Plantation	5	53.66
Mixed Plantation	12	83.80
Other Plantation	86	219.80
Other Woods with Sinuous Boundaries	2	5.62
Replanted Ancient Woodlands	20	424.98
Totals for Woodland	190	1538.64

Leicestershire CC HNET HLC Area Analysis Report

Number of records: 3088

HIGH LEICESTERSHIRE LCA Polygons

	Count	Total Area (Ha)
Broad Type: Civic and Commercial		
HLC Type:		
Commercial and Retail	36	40.30
Educational	48	119.38
Hospitals	8	17.03
Municipal and Civic	17	15.50
Religious	70	24.66
Totals for Civic and Commercial	179	216.86
Broad Type: Extractive and Landfill		
HLC Type:		
Sand and Gravel Quarry	1	13.44
Stone Quarries	1	7.85
Totals for Extractive and Landfill	2	21.29
Broad Type: Fields and Enclosed Land		
HLC Type:		
Drained Wetlands	1	5.45
Large Assarts with Sinuous Boundaries	11	769.80
Large Irregular Fields	65	2899.35
Other Large Rectilinear Fields	30	1148.68
Other Small Rectilinear Fields	103	634.78
Paddocks and Closes	81	221.83
Piecemeal Enclosure	52	2820.47
Planned Enclosure	167	11708.45
Planned Enclosure Containing Ridge and Furrow	117	2987.11
Planned Woodland Clearance	13	598.90
Re-organised Piecemeal Enclosure	134	15730.02
Small Assarts	9	131.36
Small Irregular Fields	35	334.49
Very Large Post-War Fields	101	9202.15
Totals for Fields and Enclosed Land	919	49192.84

	Count	Total Area (Ha)
Broad Type: Industrial		
HLC Type:		
Derelict Industrial Land	1	2.24
Other Works	14	26.52
Post-1880s Industrial Complex	23	108.80
Totals for Industrial	38	137.55
Broad Type: Military		
HLC Type:		
Military Airfield Abandoned	1	176.72
Totals for Military	1	176.72
Broad Type: Orchards and Allotments		
HLC Type:		
Post War Allotments	11	9.19
Post-1880s Nursery/Horticulture	6	100.97
Post-1880s Orchards	1	0.33
Pre-1880s Nursery/Horticulture	1	1.04
Pre-War Allotments	7	7.82
Totals for Orchards and Allotments	26	119.35
Broad Type: Ornamental, Parkland and Recreational		
HLC Type:		
Cemeteries	9	4.42
Golf Course	4	191.16
Other Parkland	46	204.20
Parks and Gardens	35	498.28
Public Open Space	37	108.30
Sports Fields	46	201.15
Village Greens	1	1.52
Totals for Ornamental, Parkland and Recreational	178	1209.03

	Count	Total Area (Ha)
Broad Type: Settlement		
HLC Type:		
Country House	55	92.82
Farm Complex	302	396.65
Historic Settlement Core	108	533.99
Post 1960s Residential Development	228	702.25
Pre-1880s Settlement Detached	53	49.08
Pre-1880s Settlement Semi Detached	4	2.41
Pre-1880s Settlement Terraced	4	1.70
Settlement 1st-2nd ed Detached	8	8.61
Settlement 1st-2nd ed Semi Detached	3	3.24
Settlement 1st-2nd ed Terraced	2	2.14
Settlement 2nd-3rd ed Detached	31	67.86
Settlement 2nd-3rd ed Semi Detached	20	39.55
Settlement 2nd-3rd ed Terraced	10	6.49
Settlement 3rd-4th ed Detached	33	64.19
Settlement 3rd-4th ed Semi Detached	42	90.29
Settlement 3rd-4th ed Terraced	12	11.29
Settlement Pre-1970s Detached	129	392.59
Settlement Pre-1970s Semi Detached	92	362.12
Settlement Pre-1970s Terraced	43	82.06
Totals for Settlement	1164	2867.63
Broad Type: Transportation		
HLC Type:		
Civil Airports/Airfields	1	131.11
Totals for Transportation	1	131.11
Broad Type: Water and Valley Floor		
HLC Type:		
Artificial Lake/Pond	15	26.60
Miscellaneous Floodplain Fields	38	337.55
Reservoir	2	163.03
Totals for Water and Valley Floor	55	527.18

	Count	Total Area (Ha)
Broad Type: Woodland		
HLC Type:		
Broadleaved Ancient Woodland	28	442.75
Broadleaved Plantation	116	549.44
Broadleaved Woods with Sinuous Boundaries	10	65.89
Coniferous Plantation	12	37.07
Coniferous Woodland with Sinuous Boundaries	1	4.21
Mixed Ancient Woodlands	2	39.85
Mixed Plantation	31	160.51
Mixed Woods with Sinuous Boundaries	1	1.85
Other Plantation	308	686.23
Other Woods with Sinuous Boundaries	5	25.32
Replanted Ancient Woodlands	11	195.87
Totals for Woodland	525	2208.98

Leicestershire CC HNET HLC Area Analysis Report

Number of records: 198

KNIPTON BOWL LCA Polygons

	Count	Total Area (Ha)
<i>Broad Type: Civic and Commercial</i>		
HLC Type:		
Commercial and Retail	1	1.46
Religious	4	1.91
Totals for Civic and Commercial	5	3.37
<i>Broad Type: Fields and Enclosed Land</i>		
HLC Type:		
Large Irregular Fields	7	323.32
Other Large Rectilinear Fields	3	39.00
Other Small Rectilinear Fields	12	107.57
Paddocks and Closes	10	24.93
Piecemeal Enclosure	2	24.28
Planned Enclosure	12	1413.65
Planned Enclosure Containing Ridge and Furrow	10	150.39
Re-organised Piecemeal Enclosure	6	273.05
Small Irregular Fields	6	23.82
Very Large Post-War Fields	6	686.78
Totals for Fields and Enclosed Land	74	3066.79
<i>Broad Type: Industrial</i>		
HLC Type:		
Other Works	2	1.42
Totals for Industrial	2	1.42
<i>Broad Type: Orchards and Allotments</i>		
HLC Type:		
Pre-War Allotments	2	1.60
Totals for Orchards and Allotments	2	1.60
<i>Broad Type: Ornamental, Parkland and Recreational</i>		
HLC Type:		
Cemeteries	1	0.35
Other Parkland	2	4.54
Parks and Gardens	5	64.33
Sports Fields	2	3.87
Totals for Ornamental, Parkland and Recreational	10	73.09

	Count	Total Area (Ha)
Broad Type: Settlement		
HLC Type:		
Farm Complex	18	19.58
Historic Settlement Core	9	53.68
Post 1970s Residential Development	6	4.78
Pre-1880s Settlement Detached	8	6.43
Pre-1880s Settlement Semi Detached	1	0.39
Settlement Pre-1970s Detached	3	2.20
Settlement Pre-1970s Semi Detached	4	3.34
Totals for Settlement	49	90.39
Broad Type: Water and Valley Floor		
HLC Type:		
Artificial Lake/Pond	2	15.58
Miscellaneous Floodplain Fields	7	38.00
Reservoir	1	17.98
Totals for Water and Valley Floor	10	71.55
Broad Type: Woodland		
HLC Type:		
Broadleaved Plantation	16	256.53
Coniferous Plantation	5	17.86
Mixed Plantation	6	27.21
Other Plantation	18	47.45
Other Woods with Sinuous Boundaries	1	1.78
Totals for Woodland	46	350.84

Leicestershire CC HNET HLC Area Analysis Report

Number of records: 584

LANGLEY LOWLANDS LCA Polygons

	Count	Total Area (Ha)
Broad Type: Civic and Commercial		
HLC Type:		
Commercial and Retail	5	49.85
Educational	7	13.44
Hospitals	1	0.39
Municipal and Civic	3	2.21
Religious	4	4.39
Totals for Civic and Commercial	20	70.28
Broad Type: Extractive and Landfill		
HLC Type:		
Stone Quarries	4	73.97
Totals for Extractive and Landfill	4	73.97
Broad Type: Fields and Enclosed Land		
HLC Type:		
Drained Wetlands	4	27.31
Large Assarts with Sinuous Boundaries	2	123.14
Large Irregular Fields	11	289.11
Other Large Rectilinear Fields	4	348.93
Other Small Rectilinear Fields	11	61.61
Paddocks and Closes	10	40.49
Piecemeal Enclosure	25	625.82
Planned Enclosure	35	1323.70
Planned Enclosure Containing Ridge and Furrow	5	56.68
Planned Woodland Clearance	10	235.61
Re-organised Piecemeal Enclosure	29	1883.37
Small Assarts	9	154.68
Small Irregular Fields	9	46.14
Very Large Post-War Fields	26	1752.56
Totals for Fields and Enclosed Land	190	6969.15
Broad Type: Industrial		
HLC Type:		
Other Works	3	6.03
Post-1880s Industrial Complex	3	10.96
Pre-1880s Industrial Complex	1	0.22
Totals for Industrial	7	17.21

	Count	Total Area (Ha)
Broad Type: Orchards and Allotments		
HLC Type:		
Post-1880s Nursery/Horticulture	2	4.29
Pre-War Allotments	3	8.00
Totals for Orchards and Allotments	5	12.28
Broad Type: Ornamental, Parkland and Recreational		
HLC Type:		
Golf Course	2	42.89
Other Parkland	3	6.04
Parks and Gardens	4	87.63
Public Open Space	2	2.91
Sports Fields	13	171.31
Village Greens	1	0.61
Totals for Ornamental, Parkland and Recreational	25	311.39
Broad Type: Settlement		
HLC Type:		
Country House	3	7.28
Farm Complex	63	80.02
Historic Settlement Core	16	99.94
Post 1970s Residential Development	48	87.69
Pre-1880s Settlement Detached	12	12.75
Pre-1880s Settlement Terraced	5	5.61
Settlement 1st-2nd ed Detached	1	1.41
Settlement 1st-2nd ed Semi Detached	1	1.03
Settlement 1st-2nd ed Terraced	3	1.52
Settlement 2nd-3rd ed Terraced	1	0.13
Settlement 3rd-4th ed Semi Detached	1	0.42
Settlement Pre-1970s Detached	33	72.88
Settlement Pre-1970s Semi Detached	25	86.66
Settlement Pre-1970s Terraced	1	0.68
Totals for Settlement	213	458.02

	Count	Total Area (Ha)
Broad Type: Transportation		
HLC Type:		
Civil Airports/Airfields	1	368.97
Major Road Junction	2	40.94
Train Stations/Sidings/Cuttings	1	1.27
Totals for Transportation	4	411.18
Broad Type: Water and Valley Floor		
HLC Type:		
Artificial Lake/Pond	3	7.51
Miscellaneous Floodplain Fields	10	96.82
Reservoir	2	10.24
Totals for Water and Valley Floor	15	114.57
Broad Type: Woodland		
HLC Type:		
Broadleaved Ancient Woodland	12	199.79
Broadleaved Plantation	28	141.58
Broadleaved Woods with Sinuous Boundaries	1	1.09
Coniferous Plantation	2	14.53
Coniferous Woodland with Sinuous Boundaries	1	19.59
Mixed Plantation	12	37.53
Mixed Woods with Sinuous Boundaries	1	3.68
Other Plantation	35	78.10
Other Woods with Sinuous Boundaries	4	9.58
Replanted Ancient Woodlands	5	27.61
Totals for Woodland	101	533.09

Leicestershire CC HNET HLC Area Analysis Report

Number of records: 416

LAUGHTON HILLS LCA Polygons

	Count	Total Area (Ha)
Broad Type: Civic and Commercial		
HLC Type:		
Commercial and Retail	8	16.19
Educational	2	1.93
Hospitals	1	0.92
Municipal and Civic	4	1.18
Religious	6	2.10
Totals for Civic and Commercial	21	22.31
Broad Type: Extractive and Landfill		
HLC Type:		
Sand and Gravel Quarry	2	43.90
Totals for Extractive and Landfill	2	43.90
Broad Type: Fields and Enclosed Land		
HLC Type:		
Large Irregular Fields	10	504.38
Other Large Rectilinear Fields	5	88.42
Other Small Rectilinear Fields	17	94.40
Paddocks and Closes	8	22.32
Piecemeal Enclosure	6	44.66
Planned Enclosure	25	2520.97
Planned Enclosure Containing Ridge and Furrow	20	647.74
Re-organised Piecemeal Enclosure	23	2071.81
Small Irregular Fields	6	40.50
Very Large Post-War Fields	12	804.19
Totals for Fields and Enclosed Land	132	6839.38
Broad Type: Industrial		
HLC Type:		
Other Works	1	0.81
Pre-1880s Industrial Complex	1	0.88
Totals for Industrial	2	1.68

	Count	Total Area (Ha)
Broad Type: Orchards and Allotments		
HLC Type:		
Post War Allotments	1	1.06
Post-1880s Nursery/Horticulture	4	11.82
Post-1880s Orchards	2	22.01
Pre-War Allotments	1	0.55
Totals for Orchards and Allotments	8	35.44
Broad Type: Ornamental, Parkland and Recreational		
HLC Type:		
Cemeteries	1	0.92
Golf Course	1	54.08
Other Parkland	8	17.00
Parks and Gardens	6	288.39
Public Open Space	4	11.25
Sports Fields	5	8.59
Totals for Ornamental, Parkland and Recreational	25	380.23
Broad Type: Settlement		
HLC Type:		
Country House	8	18.20
Farm Complex	49	50.67
Historic Settlement Core	12	62.99
Post 1970s Residential Development	35	34.28
Pre-1880s Settlement Detached	10	9.11
Pre-1880s Settlement Semi Detached	1	0.59
Settlement 1st-2nd ed Detached	2	0.58
Settlement 2nd-3rd ed Detached	2	2.54
Settlement 2nd-3rd ed Semi Detached	2	1.21
Settlement 3rd-4th ed Detached	7	16.46
Settlement 3rd-4th ed Semi Detached	7	8.05
Settlement 3rd-4th ed Terraced	1	0.36
Settlement Post-1970s Detached	1	0.91
Settlement Pre-1970s Detached	9	6.89
Settlement Pre-1970s Semi Detached	5	3.83
Totals for Settlement	151	216.66

	Count	Total Area (Ha)
Broad Type: Transportation		
HLC Type:		
Canal Locks/Basin	4	10.68
Civil Airports/Airfields	1	122.33
Major Road Junction	2	25.73
Totals for Transportation	7	158.74
Broad Type: Water and Valley Floor		
HLC Type:		
Artificial Lake/Pond	5	7.02
Miscellaneous Floodplain Fields	7	67.21
Natural Open Water	1	14.32
Reservoir	2	56.83
Totals for Water and Valley Floor	15	145.38
Broad Type: Woodland		
HLC Type:		
Broadleaved Ancient Woodland	1	3.37
Broadleaved Plantation	21	100.02
Broadleaved Woods with Sinuous Boundaries	2	4.02
Coniferous Plantation	1	7.27
Mixed Plantation	4	9.38
Other Plantation	22	33.98
Other Woods with Sinuous Boundaries	1	1.34
Replanted Ancient Woodlands	1	13.31
Totals for Woodland	53	172.69

Leicestershire CC HNET HLC Area Analysis Report

Number of records: 902

LUTTERWORTH LOWLANDS LCA Polygons

	Count	Total Area (Ha)
Broad Type: Civic and Commercial		
HLC Type:		
Commercial and Retail	12	15.98
Educational	12	18.98
Hospitals	2	1.84
Municipal and Civic	6	3.43
Religious	21	10.42
Totals for Civic and Commercial	53	50.65
Broad Type: Extractive and Landfill		
HLC Type:		
Abandoned/Restored Sand and Gravel Quarry	1	34.77
Sand and Gravel Quarry	2	106.89
Totals for Extractive and Landfill	3	141.66
Broad Type: Fields and Enclosed Land		
HLC Type:		
Drained Wetlands	2	28.82
Large Irregular Fields	7	262.74
Other Large Rectilinear Fields	12	154.68
Other Small Rectilinear Fields	27	102.81
Paddocks and Closes	12	34.00
Piecemeal Enclosure	19	1029.42
Planned Enclosure	49	3784.43
Planned Enclosure Containing Ridge and Furrow	30	847.01
Re-organised Piecemeal Enclosure	34	2943.11
Small Irregular Fields	6	16.96
Very Large Post-War Fields	26	1689.35
Totals for Fields and Enclosed Land	224	10893.33
Broad Type: Industrial		
HLC Type:		
Other Works	3	4.91
Post-1880s Industrial Complex	12	307.43
Textiles, Boot & Shoe and Associated Industries	1	0.94
Totals for Industrial	16	313.28

	Count	Total Area (Ha)
Broad Type: Orchards and Allotments		
HLC Type:		
Post War Allotments	7	4.83
Post-1880s Nursery/Horticulture	1	1.56
Pre-1880s Nursery/Horticulture	2	2.17
Pre-War Allotments	1	6.77
Totals for Orchards and Allotments	11	15.33
Broad Type: Ornamental, Parkland and Recreational		
HLC Type:		
Cemeteries	1	2.06
Golf Course	1	47.18
Other Parkland	25	77.10
Parks and Gardens	8	95.77
Public Open Space	4	4.32
Sports Fields	15	43.47
Village Greens	1	0.52
Totals for Ornamental, Parkland and Recreational	55	270.43

	Count	Total Area (Ha)
Broad Type: Settlement		
HLC Type:		
Country House	11	17.07
Farm Complex	135	146.13
Historic Settlement Core	30	150.90
Post 1960s Residential Development	100	247.83
Pre-1880s Settlement Detached	13	5.84
Pre-1880s Settlement Semi Detached	3	1.69
Pre-1880s Settlement Terraced	8	2.84
Settlement 1st-2nd ed Detached	3	2.88
Settlement 1st-2nd ed Semi Detached	2	2.89
Settlement 1st-2nd ed Terraced	6	3.37
Settlement 2nd-3rd ed Detached	6	4.87
Settlement 2nd-3rd ed Semi Detached	7	7.61
Settlement 2nd-3rd ed Terraced	3	2.41
Settlement 3rd-4th ed Detached	5	8.32
Settlement 3rd-4th ed Semi Detached	16	15.35
Settlement 3rd-4th ed Terraced	1	0.38
Settlement Post-1960s Detached	1	0.36
Settlement Post-1960s Semi Detached	1	0.44
Settlement Pre-1960s Detached	50	68.28
Settlement Pre-1960s Semi Detached	19	57.35
Settlement Pre-1960s Terraced	6	6.40
Totals for Settlement	426	753.21
Broad Type: Transportation		
HLC Type:		
Civil Airports/Airfields	1	229.35
Major Road Junction	1	8.62
Service Station	1	12.38
Totals for Transportation	3	250.35
Broad Type: Water and Valley Floor		
HLC Type:		
Artificial Lake/Pond	11	26.22
Marsh	1	1.18
Miscellaneous Floodplain Fields	17	324.01
Totals for Water and Valley Floor	29	351.41

	Count	Total Area (Ha)
Broad Type: Woodland		
HLC Type:		
Broadleaved Ancient Woodland	1	14.29
Broadleaved Plantation	33	166.42
Coniferous Plantation	3	7.66
Mixed Plantation	6	22.52
Other Plantation	38	95.96
Other Woods with Sinuous Boundaries	1	0.53
Totals for Woodland	82	307.38

Leicestershire CC HNET HLC Area Analysis Report

Number of records: 1019

MEASE/SENCE LOWLANDS LCA Polygons

	Count	Total Area (Ha)
Broad Type: Civic and Commercial		
HLC Type:		
Commercial and Retail	10	15.22
Educational	9	17.02
Hospitals	1	4.08
Municipal and Civic	1	1.94
Religious	11	5.72
Totals for Civic and Commercial	32	43.98
Broad Type: Extractive and Landfill		
HLC Type:		
Stone Quarries	1	9.08
Totals for Extractive and Landfill	1	9.08
Broad Type: Fields and Enclosed Land		
HLC Type:		
Drained Wetlands	1	9.54
Large Irregular Fields	18	627.18
Other Large Rectilinear Fields	14	810.69
Other Small Rectilinear Fields	48	201.14
Paddocks and Closes	23	46.34
Piecemeal Enclosure	60	2947.88
Planned Enclosure	37	2275.03
Planned Enclosure Containing Ridge and Furrow	5	295.44
Planned Woodland Clearance	3	36.10
Rectilinear Squatter Enclosure	1	0.71
Re-organised Piecemeal Enclosure	51	3926.98
Small Assarts	4	104.00
Small Irregular Fields	9	46.83
Very Large Post-War Fields	55	4911.12
Totals for Fields and Enclosed Land	329	16238.99
Broad Type: Industrial		
HLC Type:		
Other Works	5	8.04
Post-1880s Industrial Complex	9	25.05
Pre-1880s Industrial Complex	1	1.13
Totals for Industrial	15	34.22

	Count	Total Area (Ha)
Broad Type: Military		
HLC Type:		
Military Airfield Abandoned	1	193.62
Totals for Military	1	193.62
Broad Type: Orchards and Allotments		
HLC Type:		
Post War Allotments	1	0.45
Post-1880s Nursery/Horticulture	4	16.39
Pre-War Allotments	1	0.74
Totals for Orchards and Allotments	6	17.59
Broad Type: Ornamental, Parkland and Recreational		
HLC Type:		
Cemeteries	1	0.53
Golf Course	1	29.03
Other Parkland	11	53.26
Parks and Gardens	4	56.75
Public Open Space	1	0.59
Sports Fields	10	34.68
Village Greens	1	0.69
Totals for Ornamental, Parkland and Recreational	29	175.54
Broad Type: Settlement		
HLC Type:		
Country House	13	34.58
Farm Complex	160	203.07
Historic Settlement Core	38	126.66
Post 1970s Residential Development	60	89.78
Pre-1880s Settlement Detached	41	44.71
Pre-1880s Settlement Semi Detached	5	4.27
Pre-1880s Settlement Terraced	1	0.84
Settlement 1st-2nd ed Detached	1	0.38
Settlement 2nd-3rd ed Detached	1	1.89
Settlement Pre-1970s Detached	61	112.11
Settlement Pre-1970s Semi Detached	28	50.38
Settlement Pre-1970s Terraced	2	1.24
Totals for Settlement	411	669.91

	Count	Total Area (Ha)
Broad Type: Transportation		
HLC Type:		
Canal Locks/Basin	2	3.72
Major Road Junction	1	8.71
Service Station	1	1.62
Train Stations/Sidings/Cuttings	2	2.29
Totals for Transportation	6	16.34
Broad Type: Water and Valley Floor		
HLC Type:		
Artificial Lake/Pond	14	50.37
Miscellaneous Floodplain Fields	30	508.46
Totals for Water and Valley Floor	44	558.83
Broad Type: Woodland		
HLC Type:		
Broadleaved Ancient Woodland	2	17.09
Broadleaved Plantation	67	349.24
Coniferous Plantation	5	15.71
Mixed Ancient Woodlands	1	9.11
Mixed Plantation	3	13.11
Other Plantation	63	152.93
Other Woods with Sinuous Boundaries	1	0.72
Replanted Ancient Woodlands	3	18.27
Totals for Woodland	145	576.18

Leicestershire CC HNET HLC Area Analysis Report

Number of records: 901

Soar Valley LCA Polygons

	Count	Total Area (Ha)
Broad Type: Civic and Commercial		
HLC Type:		
Commercial and Retail	34	76.38
Educational	47	137.15
Hospitals	2	2.63
Municipal and Civic	14	20.10
Religious	10	6.05
Totals for Civic and Commercial	107	242.31
Broad Type: Extractive and Landfill		
HLC Type:		
Gypsum Extraction	1	21.37
Landfill	2	15.47
Sand and Gravel Quarry	1	4.61
Totals for Extractive and Landfill	4	41.45
Broad Type: Fields and Enclosed Land		
HLC Type:		
Drained Wetlands	4	214.42
Large Irregular Fields	7	135.84
Other Large Rectilinear Fields	4	49.28
Other Small Rectilinear Fields	12	62.37
Paddocks and Closes	1	3.05
Piecemeal Enclosure	7	93.86
Planned Enclosure	25	1039.61
Planned Enclosure Containing Ridge and Furrow	3	43.37
Re-organised Piecemeal Enclosure	7	700.97
Small Irregular Fields	6	43.74
Very Large Post-War Fields	16	477.20
Totals for Fields and Enclosed Land	92	2863.71

	Count	Total Area (Ha)
<i>Broad Type: Industrial</i>		
HLC Type:		
Engineering and Metal Working	1	0.77
Other Works	6	52.82
Post-1880s Industrial Complex	56	237.08
Pre-1880s Industrial Complex	4	69.54
Textiles, Boot & Shoe and Associated Industries	5	4.02
Totals for Industrial	72	364.23
<i>Broad Type: Military</i>		
HLC Type:		
Barracks/Training Ground	1	0.78
Totals for Military	1	0.78
<i>Broad Type: Orchards and Allotments</i>		
HLC Type:		
Post War Allotments	7	12.30
Post-1880s Nursery/Horticulture	6	9.64
Pre-War Allotments	7	17.97
Totals for Orchards and Allotments	20	39.91
<i>Broad Type: Ornamental, Parkland and Recreational</i>		
HLC Type:		
Cemeteries	8	20.66
Golf Course	1	43.75
Other Parkland	26	215.12
Parks and Gardens	2	68.04
Public Open Space	32	59.77
Sports Fields	33	148.79
Totals for Ornamental, Parkland and Recreational	102	556.14

	Count	Total Area (Ha)
Broad Type: Settlement		
HLC Type:		
Country House	3	8.73
Farm Complex	30	30.89
Historic Settlement Core	121	415.83
Post 1970s Residential Development	56	211.67
Pre-1880s Settlement Detached	11	12.00
Pre-1880s Settlement Semi Detached	8	8.85
Pre-1880s Settlement Terraced	16	19.44
Settlement 1st-2nd ed Detached	5	17.96
Settlement 1st-2nd ed Semi Detached	5	7.36
Settlement 1st-2nd ed Terraced	26	49.13
Settlement 2nd-3rd ed Detached	11	31.66
Settlement 2nd-3rd ed Semi Detached	7	23.75
Settlement 2nd-3rd ed Terraced	17	27.09
Settlement 3rd-4th ed Detached	12	40.65
Settlement 3rd-4th ed Semi Detached	20	111.93
Settlement 3rd-4th ed Terraced	10	14.75
Settlement Pre-1970s Detached	43	100.31
Settlement Pre-1970s Semi Detached	42	283.57
Settlement Pre-1970s Terraced	5	17.77
Totals for Settlement	406	1319.15
Broad Type: Transportation		
HLC Type:		
Canal Locks/Basin	7	14.70
Major Road Junction	2	19.82
Train Stations/Sidings/Cuttings	3	14.02
Totals for Transportation	12	48.54
Broad Type: Water and Valley Floor		
HLC Type:		
Artificial Lake/Pond	25	147.19
Marsh	2	5.14
Miscellaneous Floodplain Fields	11	344.59
Totals for Water and Valley Floor	38	496.92

	Count	Total Area (Ha)
Broad Type: Woodland		
HLC Type:		
Broadleaved Plantation	15	77.51
Coniferous Plantation	1	4.26
Mixed Plantation	1	8.74
Other Plantation	30	80.38
Totals for Woodland	47	170.88

Leicestershire CC HNET HLC Area Analysis Report

Number of records: 1697

THE COALFIELD LCA Polygons

	Count	Total Area (Ha)
Broad Type: Civic and Commercial		
HLC Type:		
Commercial and Retail	10	25.13
Educational	33	54.69
Hospitals	4	4.57
Municipal and Civic	20	25.13
Religious	10	5.91
Totals for Civic and Commercial	77	115.43
Broad Type: Extractive and Landfill		
HLC Type:		
Abandoned/Restored Clay Extraction	1	5.95
Abandoned/Restored Deep Coal Mines	7	70.96
Abandoned/Restored Open Cast Coal Mines	5	42.51
Clay Extraction	17	153.84
Open Cast Coal Mines	4	172.21
Stone Quarries	1	91.83
Totals for Extractive and Landfill	35	537.30
Broad Type: Fields and Enclosed Land		
HLC Type:		
Drained Wetlands	2	46.62
Irregular Squatter Enclosure	3	6.71
Large Irregular Fields	21	567.85
Other Large Rectilinear Fields	12	459.90
Other Small Rectilinear Fields	55	653.02
Paddocks and Closes	15	44.41
Piecemeal Enclosure	59	1733.16
Planned Enclosure	94	2569.43
Planned Enclosure Containing Ridge and Furrow	7	108.66
Planned Woodland Clearance	4	68.60
Rectilinear Squatter Enclosure	1	5.79
Re-organised Piecemeal Enclosure	49	2238.85
Small Assarts	6	106.47
Small Irregular Fields	43	358.07
Very Large Post-War Fields	33	1585.42
Totals for Fields and Enclosed Land	404	10552.97

	Count	Total Area (Ha)
<i>Broad Type: Industrial</i>		
HLC Type:		
Derelict Industrial Land	1	10.91
Other Works	6	21.65
Post-1880s Industrial Complex	60	494.13
Pre-1880s Industrial Complex	4	29.44
Textiles, Boot & Shoe and Associated Industries	1	2.59
Totals for Industrial	72	558.72
<i>Broad Type: Orchards and Allotments</i>		
HLC Type:		
Post War Allotments	6	5.24
Post-1880s Nursery/Horticulture	5	10.82
Pre-War Allotments	9	15.47
Totals for Orchards and Allotments	20	31.53
<i>Broad Type: Ornamental, Parkland and Recreational</i>		
HLC Type:		
Cemeteries	8	15.76
Golf Course	3	59.77
Other Parkland	40	198.58
Parks and Gardens	5	25.46
Public Open Space	20	98.84
Sports Fields	37	134.44
Totals for Ornamental, Parkland and Recreational	113	532.85

	Count	Total Area (Ha)
Broad Type: Settlement		
HLC Type:		
Country House	13	18.26
Farm Complex	105	130.83
Historic Settlement Core	31	145.41
Post 1970s Residential Development	160	490.82
Pre-1880s Settlement Detached	78	91.27
Pre-1880s Settlement Semi Detached	4	4.80
Pre-1880s Settlement Terraced	33	47.19
Settlement 1st-2nd ed Detached	2	1.42
Settlement 1st-2nd ed Semi Detached	3	3.00
Settlement 1st-2nd ed Terraced	34	52.45
Settlement 2nd-3rd ed Detached	12	15.74
Settlement 2nd-3rd ed Semi Detached	30	61.70
Settlement 2nd-3rd ed Terraced	23	38.19
Settlement 3rd-4th ed Detached	3	8.50
Settlement 3rd-4th ed Semi Detached	7	22.45
Settlement 3rd-4th ed Terraced	1	2.15
Settlement Pre-1970s Detached	112	227.36
Settlement Pre-1970s Semi Detached	83	221.57
Settlement Pre-1970s Terraced	16	25.43
Totals for Settlement	750	1608.55
Broad Type: Transportation		
HLC Type:		
Canal Locks/Basin	1	0.98
Major Road Junction	3	19.77
Train Stations/Sidings/Cuttings	3	9.10
Totals for Transportation	7	29.85
Broad Type: Unenclosed Land		
HLC Type:		
Other Commons	1	0.25
Totals for Unenclosed Land	1	0.25

	Count	Total Area (Ha)
Broad Type: Water and Valley Floor		
HLC Type:		
Artificial Lake/Pond	20	63.39
Marsh	1	2.69
Miscellaneous Floodplain Fields	11	107.78
Reservoir	1	35.93
Totals for Water and Valley Floor	33	209.80
Broad Type: Woodland		
HLC Type:		
Broadleaved Ancient Woodland	4	27.11
Broadleaved Plantation	29	154.05
Broadleaved Woods with Sinuous Boundaries	2	8.35
Coniferous Plantation	2	5.31
Mixed Ancient Woodlands	1	9.55
Mixed Plantation	4	42.40
Mixed Woods with Sinuous Boundaries	1	1.00
Other Plantation	136	969.97
Other Woods with Sinuous Boundaries	2	9.22
Replanted Ancient Woodlands	4	43.01
Totals for Woodland	185	1269.98

Leicestershire CC HNET HLC Area Analysis Report

Number of records: 1003

THE WOLDS LCA Polygons

	Count	Total Area (Ha)
Broad Type: Civic and Commercial		
HLC Type:		
Commercial and Retail	14	33.55
Educational	9	20.07
Municipal and Civic	4	4.46
Religious	18	6.51
Totals for Civic and Commercial	45	64.60
Broad Type: Extractive and Landfill		
HLC Type:		
Abandoned/Restored Stone Quarries	2	6.67
Clay Extraction	1	51.41
Totals for Extractive and Landfill	3	58.07
Broad Type: Fields and Enclosed Land		
HLC Type:		
Large Irregular Fields	9	199.68
Other Large Rectilinear Fields	6	291.13
Other Small Rectilinear Fields	54	241.81
Paddocks and Closes	24	54.25
Piecemeal Enclosure	23	1141.28
Planned Enclosure	71	7404.95
Planned Enclosure Containing Ridge and Furrow	43	950.65
Planned Woodland Clearance	1	1.95
Re-organised Piecemeal Enclosure	57	5591.84
Small Irregular Fields	9	41.42
Very Large Post-War Fields	50	5146.68
Totals for Fields and Enclosed Land	347	21065.64
Broad Type: Industrial		
HLC Type:		
Derelict Industrial Land	2	38.68
Other Works	4	4.80
Post-1880s Industrial Complex	20	117.31
Pre-1880s Industrial Complex	1	1.01
Totals for Industrial	27	161.80

	Count	Total Area (Ha)
Broad Type: Military		
HLC Type:		
Barracks/Training Ground	2	10.47
Former Ordnance Depot Now Used For Other Purposes	1	1.14
Military Airfield Abandoned	2	128.51
Totals for Military	5	140.12
 Broad Type: Orchards and Allotments		
HLC Type:		
Post War Allotments	6	5.55
Pre-War Allotments	5	10.79
Totals for Orchards and Allotments	11	16.34
 Broad Type: Ornamental, Parkland and Recreational		
HLC Type:		
Cemeteries	3	5.42
Golf Course	4	182.85
Other Parkland	12	95.28
Parks and Gardens	5	43.29
Public Open Space	9	19.56
Racecourse	1	41.51
Sports Fields	11	46.68
Totals for Ornamental, Parkland and Recreational	45	434.59

	Count	Total Area (Ha)
Broad Type: Settlement		
HLC Type:		
Country House	13	24.20
Farm Complex	136	188.64
Historic Settlement Core	30	180.25
Post 1970s Residential Development	55	135.77
Pre-1880s Settlement Detached	17	14.24
Pre-1880s Settlement Semi Detached	2	1.16
Pre-1880s Settlement Terraced	3	1.62
Settlement 1st-2nd ed Detached	2	1.39
Settlement 1st-2nd ed Semi Detached	5	6.66
Settlement 1st-2nd ed Terraced	3	6.94
Settlement 2nd-3rd ed Detached	6	11.79
Settlement 2nd-3rd ed Semi Detached	4	12.22
Settlement 2nd-3rd ed Terraced	4	5.54
Settlement 3rd-4th ed Detached	11	15.46
Settlement 3rd-4th ed Semi Detached	9	16.47
Settlement 3rd-4th ed Terraced	3	2.27
Settlement Pre-1970s Detached	39	75.64
Settlement Pre-1970s Semi Detached	29	56.87
Settlement Pre-1970s Terraced	5	19.42
Totals for Settlement	379	780.17
Broad Type: Unenclosed Land		
HLC Type:		
Other Commons	1	1.94
Totals for Unenclosed Land	1	1.94
Broad Type: Water and Valley Floor		
HLC Type:		
Artificial Lake/Pond	3	21.74
Miscellaneous Floodplain Fields	5	30.71
Reservoir	2	3.88
Totals for Water and Valley Floor	10	56.33

	Count	Total Area (Ha)
Broad Type: Woodland		
HLC Type:		
Broadleaved Ancient Woodland	3	25.72
Broadleaved Plantation	48	286.87
Broadleaved Woods with Sinuous Boundaries	3	22.21
Coniferous Plantation	2	7.21
Mixed Plantation	1	10.43
Other Plantation	70	173.93
Other Woods with Sinuous Boundaries	3	4.99
Totals for Woodland	130	531.36

Leicestershire CC HNET HLC Area Analysis Report

Number of records: 196

TRENT VALLEY LCA Polygons

	Count	Total Area (Ha)
Broad Type: Civic and Commercial		
HLC Type:		
Commercial and Retail	5	16.11
Educational	2	2.21
Hospitals	1	0.79
Municipal and Civic	1	0.38
Religious	1	0.68
Totals for Civic and Commercial	10	20.17
Broad Type: Extractive and Landfill		
HLC Type:		
Sand and Gravel Quarry	3	24.23
Totals for Extractive and Landfill	3	24.23
Broad Type: Fields and Enclosed Land		
HLC Type:		
Large Irregular Fields	1	62.66
Other Large Rectilinear Fields	1	6.33
Other Small Rectilinear Fields	2	9.82
Paddocks and Closes	1	2.43
Piecemeal Enclosure	4	69.94
Planned Enclosure	10	205.15
Planned Enclosure Containing Ridge and Furrow	1	10.81
Re-organised Piecemeal Enclosure	5	176.18
Small Irregular Fields	2	16.71
Very Large Post-War Fields	10	492.08
Totals for Fields and Enclosed Land	37	1052.11
Broad Type: Industrial		
HLC Type:		
Derelict Industrial Land	1	70.72
Other Works	1	3.27
Post-1880s Industrial Complex	5	93.19
Pre-1880s Industrial Complex	1	2.56
Textiles, Boot & Shoe and Associated Industries	2	0.99
Totals for Industrial	10	170.74

	Count	Total Area (Ha)
Broad Type: Orchards and Allotments		
HLC Type:		
Post War Allotments	3	0.95
Post-1880s Orchards	1	0.56
Pre-War Allotments	2	4.52
Totals for Orchards and Allotments	6	6.03
Broad Type: Ornamental, Parkland and Recreational		
HLC Type:		
Cemeteries	2	1.84
Other Parkland	4	6.19
Parks and Gardens	3	28.72
Public Open Space	7	29.48
Sports Fields	5	15.10
Totals for Ornamental, Parkland and Recreational	21	81.33
Broad Type: Settlement		
HLC Type:		
Country House	1	1.07
Farm Complex	8	12.79
Historic Settlement Core	6	30.34
Post 1970s Residential Development	21	62.38
Pre-1880s Settlement Detached	5	6.16
Pre-1880s Settlement Semi Detached	1	0.70
Pre-1880s Settlement Terraced	3	0.89
Settlement 1st-2nd ed Detached	1	1.19
Settlement 1st-2nd ed Terraced	2	0.79
Settlement 2nd-3rd ed Semi Detached	2	0.61
Settlement 3rd-4th ed Terraced	1	0.51
Settlement Pre-1970s Detached	12	14.56
Settlement Pre-1970s Semi Detached	7	7.92
Settlement Pre-1970s Terraced	3	5.20
Totals for Settlement	73	145.12
Broad Type: Transportation		
HLC Type:		
Canal Locks/Basin	2	15.02
Major Road Junction	4	90.65
Totals for Transportation	6	105.67

	Count	Total Area (Ha)
Broad Type: Water and Valley Floor		
HLC Type:		
Artificial Lake/Pond	6	58.94
Miscellaneous Floodplain Fields	8	330.27
Totals for Water and Valley Floor	14	389.21
Broad Type: Woodland		
HLC Type:		
Broadleaved Plantation	4	22.83
Coniferous Plantation	1	1.32
Mixed Plantation	1	5.05
Other Plantation	10	21.81
Totals for Woodland	16	51.01

Leicestershire CC HNET HLC Area Analysis Report

Number of records: 4527

UPPER SOAR LCA Polygons

	Count	Total Area (Ha)
Broad Type: Civic and Commercial		
HLC Type:		
Commercial and Retail	277	584.08
Educational	175	342.54
Hospitals	47	110.33
Municipal and Civic	125	189.23
Religious	108	42.38
Totals for Civic and Commercial	732	1268.56
Broad Type: Extractive and Landfill		
HLC Type:		
Abandoned/Restored Clay Extraction	1	2.58
Landfill	2	13.65
Sand and Gravel Quarry	4	97.70
Stone Quarries	3	117.97
Totals for Extractive and Landfill	10	231.89
Broad Type: Fields and Enclosed Land		
HLC Type:		
Drained Wetlands	2	61.75
Large Irregular Fields	16	629.11
Other Large Rectilinear Fields	14	727.24
Other Small Rectilinear Fields	69	495.53
Paddocks and Closes	10	28.30
Piecemeal Enclosure	52	2143.61
Planned Enclosure	87	4671.77
Planned Enclosure Containing Ridge and Furrow	5	34.89
Planned Woodland Clearance	2	17.51
Re-organised Piecemeal Enclosure	64	5502.08
Small Assarts	2	6.60
Small Irregular Fields	21	156.86
Very Large Post-War Fields	46	2540.31
Totals for Fields and Enclosed Land	390	17015.55

	Count	Total Area (Ha)
Broad Type: Industrial		
HLC Type:		
Derelict Industrial Land	5	11.25
Engineering and Metal Working	3	9.09
Other Works	15	51.17
Post-1880s Industrial Complex	235	1243.66
Pre-1880s Industrial Complex	7	8.99
Textiles, Boot & Shoe and Associated Industries	18	21.02
Totals for Industrial	283	1345.18
Broad Type: Military		
HLC Type:		
Barracks/Training Ground	1	2.43
Totals for Military	1	2.43
Broad Type: Orchards and Allotments		
HLC Type:		
Post War Allotments	38	67.75
Post-1880s Nursery/Horticulture	15	26.53
Pre-1880s Nursery/Horticulture	1	2.48
Pre-War Allotments	37	115.41
Totals for Orchards and Allotments	91	212.16
Broad Type: Ornamental, Parkland and Recreational		
HLC Type:		
Cemeteries	29	79.56
Golf Course	17	483.88
Other Parkland	160	746.00
Parks and Gardens	19	194.61
Public Open Space	98	307.12
Racecourse	1	27.33
Sports Fields	116	524.32
Totals for Ornamental, Parkland and Recreational	440	2362.82

	Count	Total Area (Ha)
Broad Type: Settlement		
HLC Type:		
Country House	30	41.92
Farm Complex	152	175.52
Historic Settlement Core	73	265.91
Post 1970s Residential Development	507	2166.68
Pre-1880s Settlement Detached	64	60.88
Pre-1880s Settlement Semi Detached	12	10.64
Pre-1880s Settlement Terraced	111	124.28
Settlement 1st-2nd ed Detached	34	55.95
Settlement 1st-2nd ed Semi Detached	16	16.18
Settlement 1st-2nd ed Terraced	146	349.12
Settlement 2nd-3rd ed Detached	78	260.79
Settlement 2nd-3rd ed Semi Detached	148	461.93
Settlement 2nd-3rd ed Terraced	109	141.04
Settlement 3rd-4th ed Detached	59	124.11
Settlement 3rd-4th ed Semi Detached	142	692.30
Settlement 3rd-4th ed Terraced	77	142.93
Settlement Pre-1970s Detached	242	648.51
Settlement Pre-1970s Semi Detached	229	1299.13
Settlement Pre-1970s Terraced	103	255.92
Totals for Settlement	2332	7293.75
Broad Type: Transportation		
HLC Type:		
Canal Locks/Basin	3	11.52
Major Road Junction	9	69.51
Service Station	1	10.65
Train Stations/Sidings/Cuttings	7	24.72
Totals for Transportation	20	116.40
Broad Type: Unenclosed Land		
HLC Type:		
Other Commons	2	30.21
Totals for Unenclosed Land	2	30.21

	Count	Total Area (Ha)
Broad Type: Water and Valley Floor		
HLC Type:		
Artificial Lake/Pond	25	91.78
Miscellaneous Floodplain Fields	30	798.60
Reservoir	1	3.14
Totals for Water and Valley Floor	56	893.51
Broad Type: Woodland		
HLC Type:		
Broadleaved Ancient Woodland	7	84.74
Broadleaved Plantation	47	160.09
Broadleaved Woods with Sinuous Boundaries	2	7.18
Coniferous Plantation	1	1.11
Mixed Plantation	9	28.26
Other Plantation	100	226.96
Other Woods with Sinuous Boundaries	4	4.54
Totals for Woodland	170	512.88

Leicestershire CC HNET HLC Area Analysis Report

Number of records: 365

VALE OF BELVOIR LCA Polygons

	Count	Total Area (Ha)
Broad Type: Civic and Commercial		
HLC Type:		
Commercial and Retail	7	11.42
Educational	2	4.34
Religious	7	4.82
Totals for Civic and Commercial	16	20.59
Broad Type: Fields and Enclosed Land		
HLC Type:		
Other Large Rectilinear Fields	1	75.20
Other Small Rectilinear Fields	24	101.98
Paddocks and Closes	15	21.89
Piecemeal Enclosure	10	588.84
Planned Enclosure	15	4342.60
Planned Enclosure Containing Ridge and Furrow	13	519.87
Re-organised Piecemeal Enclosure	18	1203.93
Small Irregular Fields	2	9.95
Very Large Post-War Fields	7	562.29
Totals for Fields and Enclosed Land	105	7426.54
Broad Type: Industrial		
HLC Type:		
Derelict Industrial Land	1	3.84
Other Works	4	6.95
Post-1880s Industrial Complex	5	32.45
Totals for Industrial	10	43.24
Broad Type: Military		
HLC Type:		
Abandoned Ordnance Depot	1	8.48
Military Airfield Abandoned	2	142.77
Totals for Military	3	151.25

	Count	Total Area (Ha)
Broad Type: Orchards and Allotments		
HLC Type:		
Post War Allotments	1	0.29
Post-1880s Nursery/Horticulture	1	1.44
Pre-War Allotments	5	3.63
Totals for Orchards and Allotments	7	5.36
Broad Type: Ornamental, Parkland and Recreational		
HLC Type:		
Other Parkland	3	6.38
Public Open Space	1	1.76
Sports Fields	6	13.30
Totals for Ornamental, Parkland and Recreational	10	21.44
Broad Type: Settlement		
HLC Type:		
Farm Complex	58	73.25
Historic Settlement Core	26	145.71
Post 1970s Residential Development	36	51.32
Pre-1880s Settlement Detached	6	3.85
Settlement 1st-2nd ed Detached	2	1.07
Settlement 1st-2nd ed Semi Detached	1	0.98
Settlement 2nd-3rd ed Detached	1	1.40
Settlement 3rd-4th ed Detached	5	10.07
Settlement 3rd-4th ed Semi Detached	11	8.48
Settlement 3rd-4th ed Terraced	1	0.53
Settlement Pre-1970s Detached	26	33.01
Settlement Pre-1970s Semi Detached	12	29.04
Settlement Pre-1970s Terraced	1	0.20
Totals for Settlement	186	358.92
Broad Type: Transportation		
HLC Type:		
Train Stations/Sidings/Cuttings	1	0.57
Totals for Transportation	1	0.57
Broad Type: Water and Valley Floor		
HLC Type:		
Miscellaneous Floodplain Fields	2	12.62
Totals for Water and Valley Floor	2	12.62

	Count	Total Area (Ha)
Broad Type: Woodland		
HLC Type:		
Broadleaved Plantation	5	77.58
Other Plantation	20	77.54
Totals for Woodland	25	155.12

Leicestershire CC HNET HLC Area Analysis Report

Number of records: 434

VALE OF CATMOSE LCA Polygons

	Count	Total Area (Ha)
Broad Type: Civic and Commercial		
HLC Type:		
Commercial and Retail	7	10.38
Educational	18	25.70
Hospitals	2	2.32
Municipal and Civic	9	21.05
Religious	8	3.60
Totals for Civic and Commercial	44	63.05
Broad Type: Fields and Enclosed Land		
HLC Type:		
Drained Wetlands	1	5.42
Large Irregular Fields	6	222.04
Other Large Rectilinear Fields	1	13.24
Other Small Rectilinear Fields	8	33.20
Paddocks and Closes	11	32.46
Piecemeal Enclosure	6	208.68
Planned Enclosure	38	1964.57
Planned Enclosure Containing Ridge and Furrow	24	332.70
Re-organised Piecemeal Enclosure	2	65.64
Small Irregular Fields	3	8.27
Very Large Post-War Fields	18	2080.98
Totals for Fields and Enclosed Land	118	4967.21
Broad Type: Industrial		
HLC Type:		
Other Works	2	4.97
Post-1880s Industrial Complex	5	34.36
Totals for Industrial	7	39.33
Broad Type: Orchards and Allotments		
HLC Type:		
Post-1880s Nursery/Horticulture	2	2.42
Pre-War Allotments	6	11.97
Totals for Orchards and Allotments	8	14.38

	Count	Total Area (Ha)
Broad Type: Ornamental, Parkland and Recreational		
HLC Type:		
Cemeteries	3	3.54
Golf Course	1	35.50
Other Parkland	20	202.22
Parks and Gardens	3	24.56
Public Open Space	2	11.86
Sports Fields	7	38.98
Village Greens	1	0.33
Totals for Ornamental, Parkland and Recreational	37	316.99

Broad Type: Settlement

HLC Type:		
Country House	6	12.38
Farm Complex	19	19.47
Historic Settlement Core	14	84.13
Post 1970s Residential Development	48	226.18
Pre-1880s Settlement Detached	8	7.30
Pre-1880s Settlement Semi Detached	1	1.01
Pre-1880s Settlement Terraced	2	0.36
Settlement 1st-2nd ed Detached	1	1.51
Settlement 2nd-3rd ed Detached	3	1.90
Settlement 2nd-3rd ed Terraced	2	1.74
Settlement 3rd-4th ed Semi Detached	1	0.48
Settlement 3rd-4th ed Terraced	1	0.77
Settlement Pre-1970s Detached	6	8.69
Settlement Pre-1970s Semi Detached	5	11.89
Settlement Pre-1970s Terraced	7	4.32
Totals for Settlement	124	382.13

Broad Type: Transportation

HLC Type:		
Train Stations/Sidings/Cuttings	3	10.41
Totals for Transportation	3	10.41

Broad Type: Water and Valley Floor

HLC Type:		
Marsh	4	23.30
Miscellaneous Floodplain Fields	4	36.90
Reservoir	11	1179.76
Totals for Water and Valley Floor	19	1239.95

	Count	Total Area (Ha)
Broad Type: Woodland		
HLC Type:		
Broadleaved Ancient Woodland	5	47.27
Broadleaved Plantation	17	90.41
Broadleaved Woods with Sinuous Boundaries	2	11.74
Mixed Woods with Sinuous Boundaries	1	7.03
Other Plantation	48	104.54
Replanted Ancient Woodlands	1	2.05
Totals for Woodland	74	263.04

Leicestershire CC HNET HLC Area Analysis Report

Number of records: 693

WELLAND VALLEY LCA Polygons

	Count	Total Area (Ha)
Broad Type: Civic and Commercial		
HLC Type:		
Commercial and Retail	33	52.30
Educational	12	23.78
Hospitals	4	4.19
Municipal and Civic	7	21.74
Religious	14	5.45
Totals for Civic and Commercial	70	107.46
Broad Type: Extractive and Landfill		
HLC Type:		
Abandoned/Restored Stone Quarries	1	4.34
Landfill	1	2.78
Totals for Extractive and Landfill	2	7.12
Broad Type: Fields and Enclosed Land		
HLC Type:		
Drained Wetlands	2	44.42
Large Irregular Fields	11	488.00
Other Large Rectilinear Fields	4	136.04
Other Small Rectilinear Fields	22	69.16
Paddocks and Closes	21	67.07
Piecemeal Enclosure	8	122.99
Planned Enclosure	51	4500.17
Planned Enclosure Containing Ridge and Furrow	42	1308.12
Re-organised Piecemeal Enclosure	10	346.53
Small Irregular Fields	5	16.87
Very Large Post-War Fields	12	1228.66
Totals for Fields and Enclosed Land	188	8328.03
Broad Type: Industrial		
HLC Type:		
Other Works	9	16.16
Post-1880s Industrial Complex	13	46.02
Pre-1880s Industrial Complex	3	6.32
Totals for Industrial	25	68.50

	Count	Total Area (Ha)
Broad Type: Orchards and Allotments		
HLC Type:		
Post War Allotments	4	3.07
Post-1880s Nursery/Horticulture	2	4.41
Pre-War Allotments	4	4.71
Totals for Orchards and Allotments	10	12.19
Broad Type: Ornamental, Parkland and Recreational		
HLC Type:		
Cemeteries	3	4.68
Golf Course	1	40.71
Other Parkland	15	34.93
Parks and Gardens	3	18.98
Public Open Space	11	13.97
Sports Fields	8	45.95
Village Greens	1	0.97
Totals for Ornamental, Parkland and Recreational	42	160.20
Broad Type: Settlement		
HLC Type:		
Country House	8	13.72
Farm Complex	41	63.68
Historic Settlement Core	21	171.73
Post 1970s Residential Development	86	248.34
Pre-1880s Settlement Detached	19	14.11
Pre-1880s Settlement Semi Detached	3	1.60
Pre-1880s Settlement Terraced	11	12.20
Settlement 1st-2nd ed Detached	2	1.88
Settlement 1st-2nd ed Semi Detached	4	2.36
Settlement 1st-2nd ed Terraced	9	16.46
Settlement 2nd-3rd ed Detached	6	10.61
Settlement 2nd-3rd ed Semi Detached	10	24.82
Settlement 2nd-3rd ed Terraced	1	1.46
Settlement 3rd-4th ed Detached	5	5.81
Settlement 3rd-4th ed Semi Detached	11	25.73
Settlement Pre-1970s Detached	31	69.61
Settlement Pre-1970s Semi Detached	28	55.82
Settlement Pre-1970s Terraced	7	9.22
Totals for Settlement	303	749.18

	Count	Total Area (Ha)
Broad Type: Transportation		
HLC Type:		
Canal Locks/Basin	1	0.43
Major Road Junction	2	6.89
Train Stations/Sidings/Cuttings	2	13.53
Totals for Transportation	5	20.85
Broad Type: Water and Valley Floor		
HLC Type:		
Artificial Lake/Pond	1	2.09
Miscellaneous Floodplain Fields	18	349.20
Totals for Water and Valley Floor	19	351.29
Broad Type: Woodland		
HLC Type:		
Broadleaved Plantation	6	33.43
Mixed Plantation	1	0.93
Other Plantation	22	43.39
Totals for Woodland	29	77.74

Leicestershire CC HNET HLC Area Analysis Report

Number of records: 538

WREAKE VALLEY LCA Polygons

	Count	Total Area (Ha)
Broad Type: Civic and Commercial		
HLC Type:		
Commercial and Retail	20	37.76
Educational	14	24.93
Hospitals	4	8.74
Municipal and Civic	7	12.53
Religious	12	8.40
Totals for Civic and Commercial	57	92.35
Broad Type: Fields and Enclosed Land		
HLC Type:		
Drained Wetlands	1	19.85
Large Irregular Fields	3	133.71
Other Large Rectilinear Fields	2	36.10
Other Small Rectilinear Fields	10	37.26
Paddocks and Closes	7	19.14
Piecemeal Enclosure	4	69.82
Planned Enclosure	30	1369.29
Planned Enclosure Containing Ridge and Furrow	4	200.57
Re-organised Piecemeal Enclosure	12	1310.07
Small Irregular Fields	4	32.82
Very Large Post-War Fields	7	458.56
Totals for Fields and Enclosed Land	84	3687.20
Broad Type: Industrial		
HLC Type:		
Other Works	4	12.12
Post-1880s Industrial Complex	20	104.47
Pre-1880s Industrial Complex	1	0.32
Totals for Industrial	25	116.91
Broad Type: Orchards and Allotments		
HLC Type:		
Post War Allotments	2	2.05
Post-1880s Nursery/Horticulture	8	32.28
Pre-War Allotments	4	8.59
Totals for Orchards and Allotments	14	42.93

	Count	Total Area (Ha)
Broad Type: Ornamental, Parkland and Recreational		
HLC Type:		
Cemeteries	2	2.18
Golf Course	2	142.51
Other Parkland	14	61.97
Parks and Gardens	6	168.05
Public Open Space	5	13.05
Sports Fields	18	75.93
Totals for Ornamental, Parkland and Recreational	47	463.69
Broad Type: Settlement		
HLC Type:		
Country House	8	21.29
Farm Complex	37	46.58
Historic Settlement Core	13	95.04
Post 1970s Residential Development	64	330.5
Pre-1880s Settlement Detached	16	23.81
Pre-1880s Settlement Terraced	10	6.04
Settlement 1st-2nd ed Detached	5	4.55
Settlement 1st-2nd ed Semi Detached	2	1.96
Settlement 1st-2nd ed Terraced	5	6.45
Settlement 2nd-3rd ed Detached	9	36.30
Settlement 2nd-3rd ed Semi Detached	9	19.77
Settlement 2nd-3rd ed Terraced	6	4.95
Settlement 3rd-4th ed Detached	13	31.30
Settlement 3rd-4th ed Semi Detached	14	34.31
Settlement 3rd-4th ed Terraced	2	0.80
Settlement Pre-1960s Detached	19	46.88
Settlement Pre-1960s Semi Detached	10	37.28
Settlement Pre-1960s Terraced	6	10.10
Totals for Settlement	248	757.91
Broad Type: Transportation		
HLC Type:		
Train Stations/Sidings/Cuttings	3	4.33
Totals for Transportation	3	4.33

	Count	Total Area (Ha)
<i>Broad Type: Water and Valley Floor</i>		
HLC Type:		
Artificial Lake/Pond	6	67.28
Miscellaneous Floodplain Fields	16	399.97
Reservoir	1	21.76
Totals for Water and Valley Floor	23	489.01
<i>Broad Type: Woodland</i>		
HLC Type:		
Broadleaved Plantation	13	69.13
Mixed Plantation	1	6.27
Other Plantation	22	54.85
Other Woods with Sinuous Boundaries	1	1.63
Totals for Woodland	37	131.87

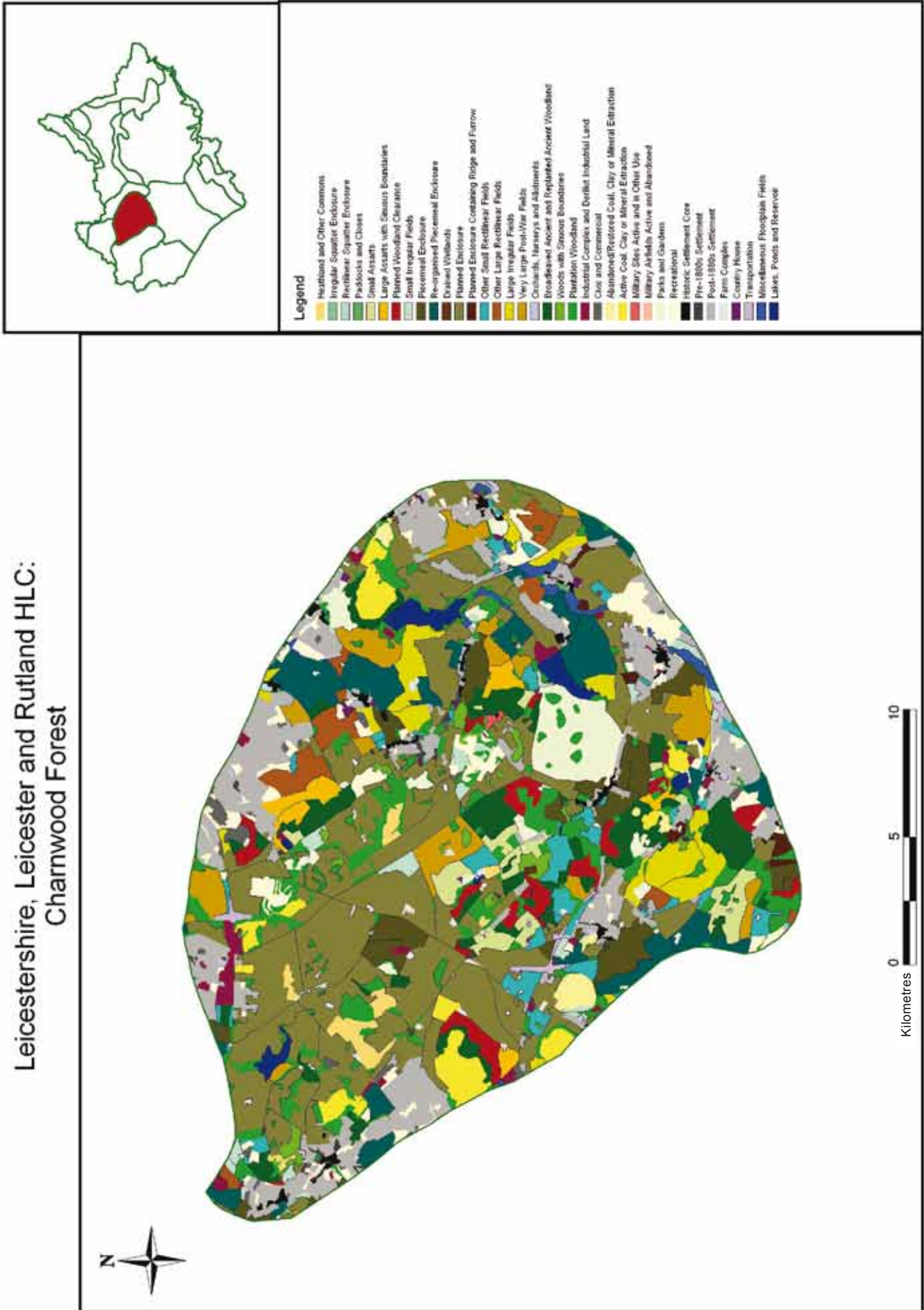
Leicestershire, Leicester and Rutland HLC:
Belvoir Scarp



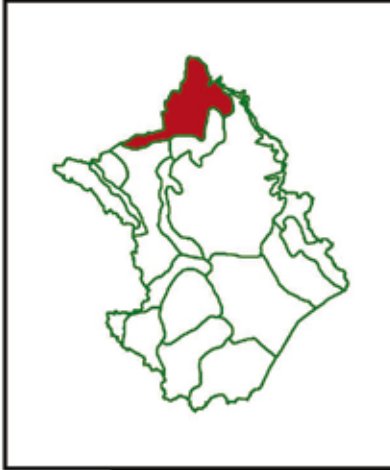
Legend

- Heathland and Other Commons
- Irregular Squatter Enclosure
- Rectilinear Squatter Enclosure
- Paddocks and Closes
- Small Assarts
- Large Assarts with Sluice Boundaries
- Planned Woodland Clearance
- Small Irregular Fields
- Piecemeal Enclosure
- Re-organised Piecemeal Enclosure
- Drained Wetlands
- Planned Enclosure
- Planned Enclosure Containing Ridge and Farrow
- Other Small Rectilinear Fields
- Other Large Rectilinear Fields
- Large Irregular Fields
- Very Large Post-War Fields
- Orchards, Nurseries and Allotments
- Broadleaved Ancient and Replanted Ancient Woodland
- Woods with Sluice Boundaries
- Plantation Woodland
- Industrial Complex and Derelict Industrial Land
- Old and Commercial
- Abandoned/Restored Coal, Clay or Mineral Extraction
- Active Coal, Clay or Mineral Extraction
- Military Sites Active and in Other Use
- Military Airfields Active and Abandoned
- Parks and Gardens
- Recreational
- Historic Settlement Core
- Pre-1850s Settlement
- Post-1850s Settlement
- Farm Complex
- Country House
- Transportation
- Miscellaneous Floodplain Fields
- Lakes, Ponds and Reservoir

Leicestershire, Leicester and Rutland HLC:
Charnwood Forest



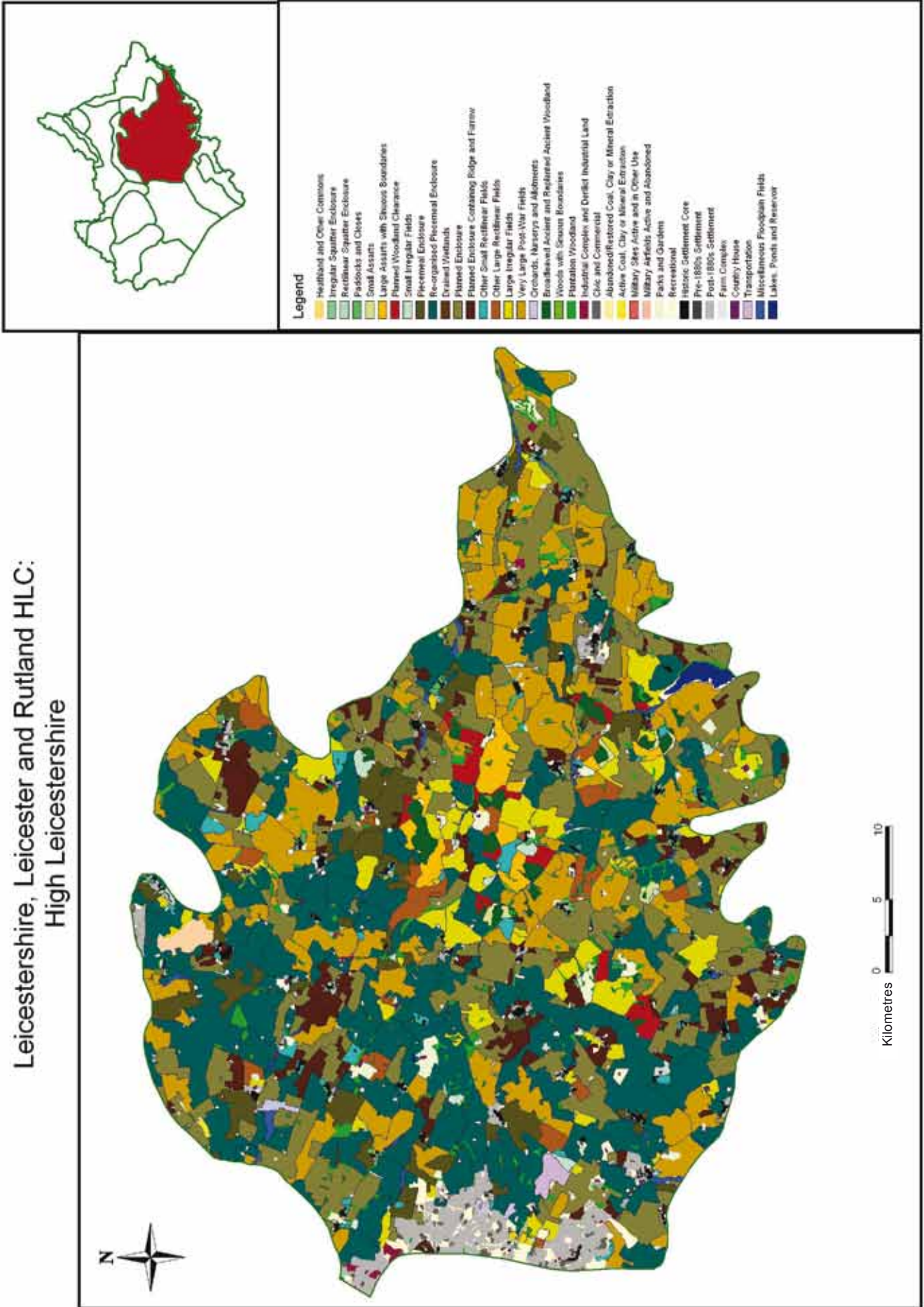
Leicestershire, Leicester and Rutland HLC:
Cottesmore Plateau



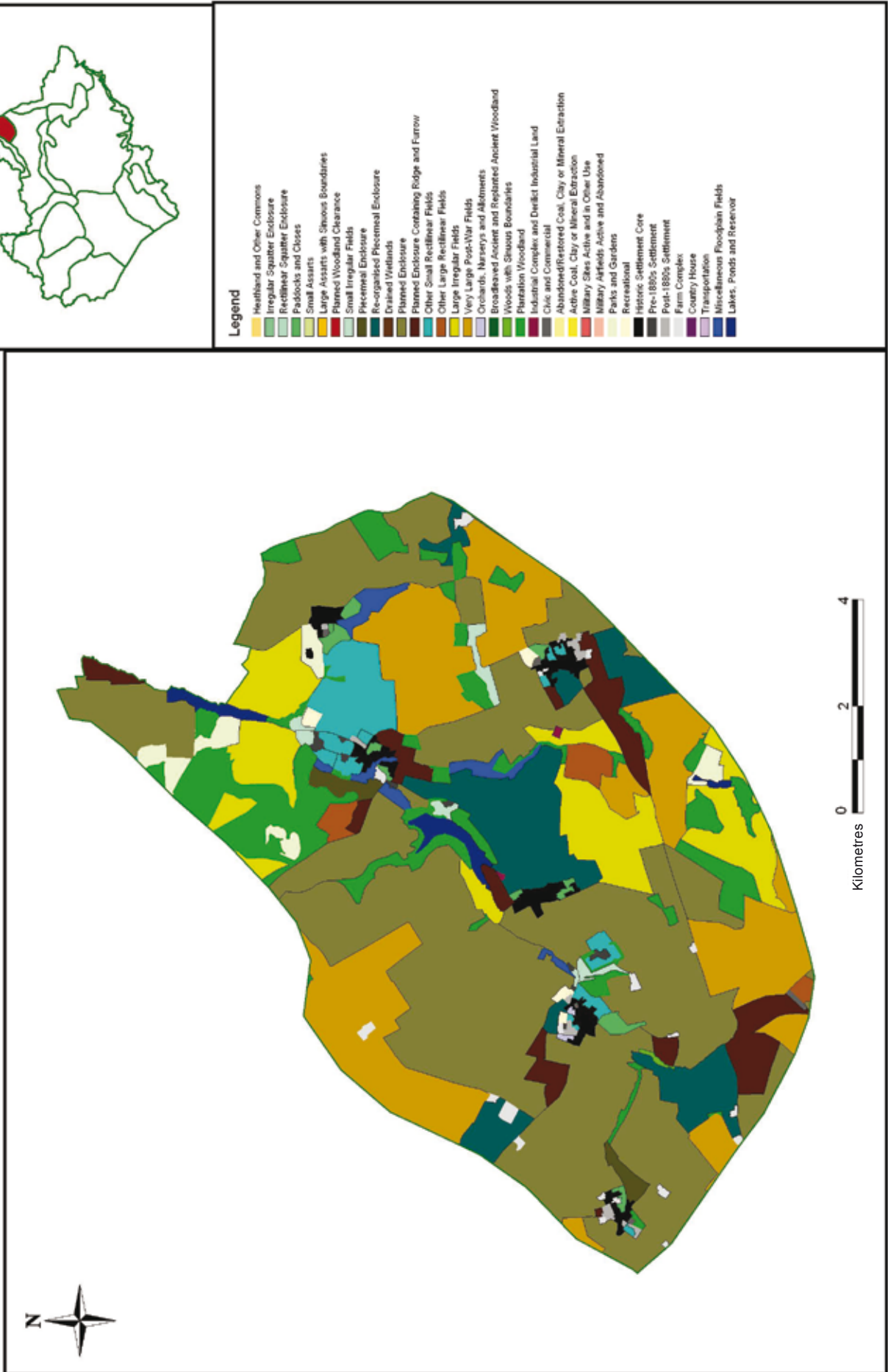
Legend

- Heathland and Other Commons
- Irregular Squatter Enclosure
- Rectilinear Squatter Enclosure
- Peddocks and Closets
- Small Assarts
- Large Assarts with Slausus Boundaries
- Planned Woodland Clearance
- Small Irregular Fields
- Piecemeal Enclosure
- Re-organised Piecemeal Enclosure
- Drained Wetlands
- Planned Enclosure
- Planned Enclosure Containing Ridge and Furrow
- Other Small Rectilinear Fields
- Other Large Rectilinear Fields
- Large Irregular Fields
- Very Large Post-War Fields
- Orchards, Nareyns and Abonments
- Broadsheared Ancient and Replanted Ancient Woodland
- Floods with Slausus Boundaries
- Plantation Woodland
- Industrial Complex and Derelict Industrial Land
- Civic and Commercial
- Abandoned/Restored Coal, Clay or Mineral Extraction
- Active Coal, Clay or Mineral Extraction
- Military Sites Active and in Other Use
- Military Airfields Active and Abandoned
- Parks and Gardens
- Recreational
- Historic Settlement Core
- Pre-1880s Settlement
- Post-1880s Settlement
- Farm Complex
- Country House
- Transportation
- Miscellaneous Floodplain Fields
- Lakes, Ponds and Reservoir

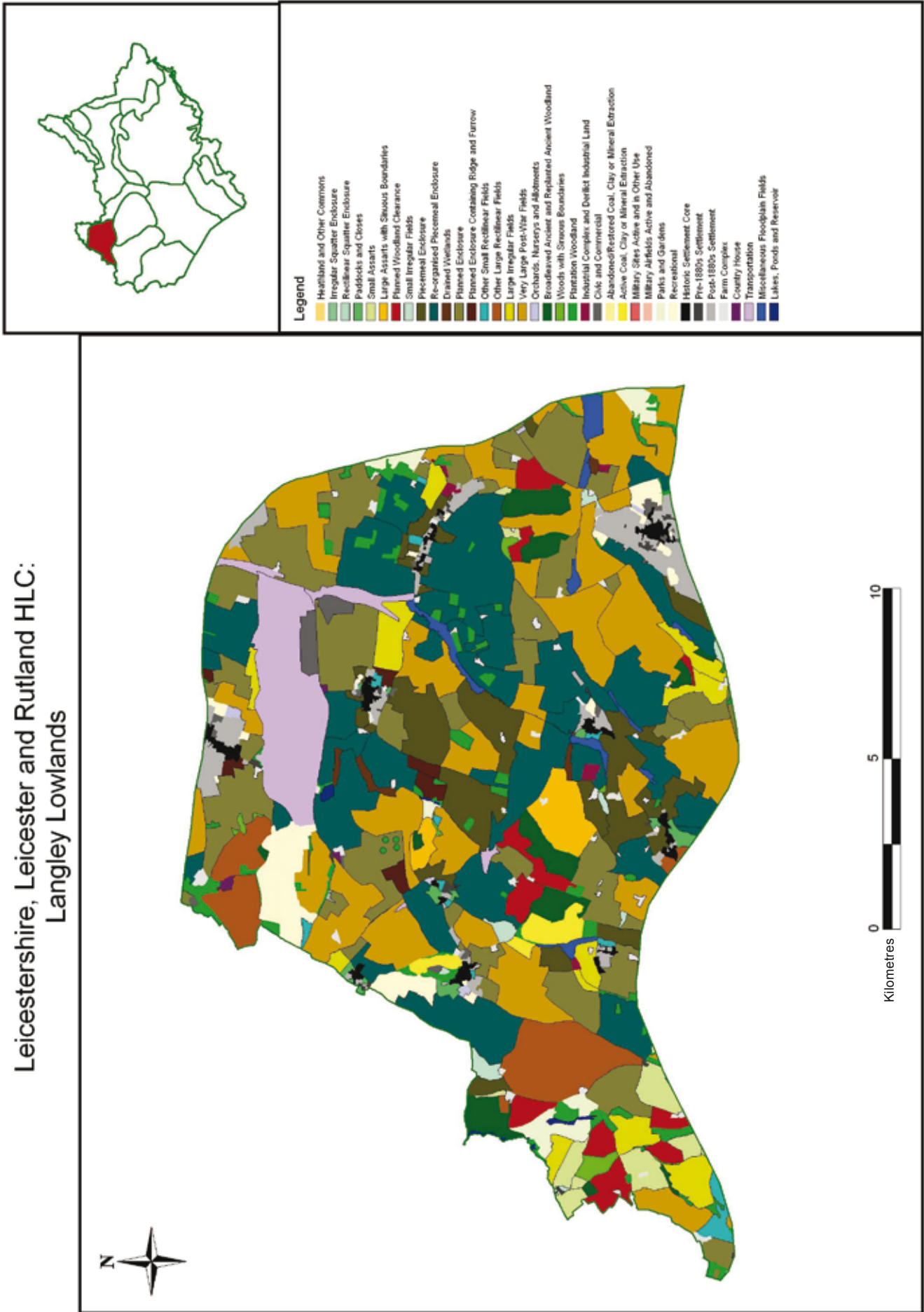
Leicestershire, Leicester and Rutland HLC:
High Leicestershire



Leicestershire, Leicester and Rutland HLC:
Knipton Bowl

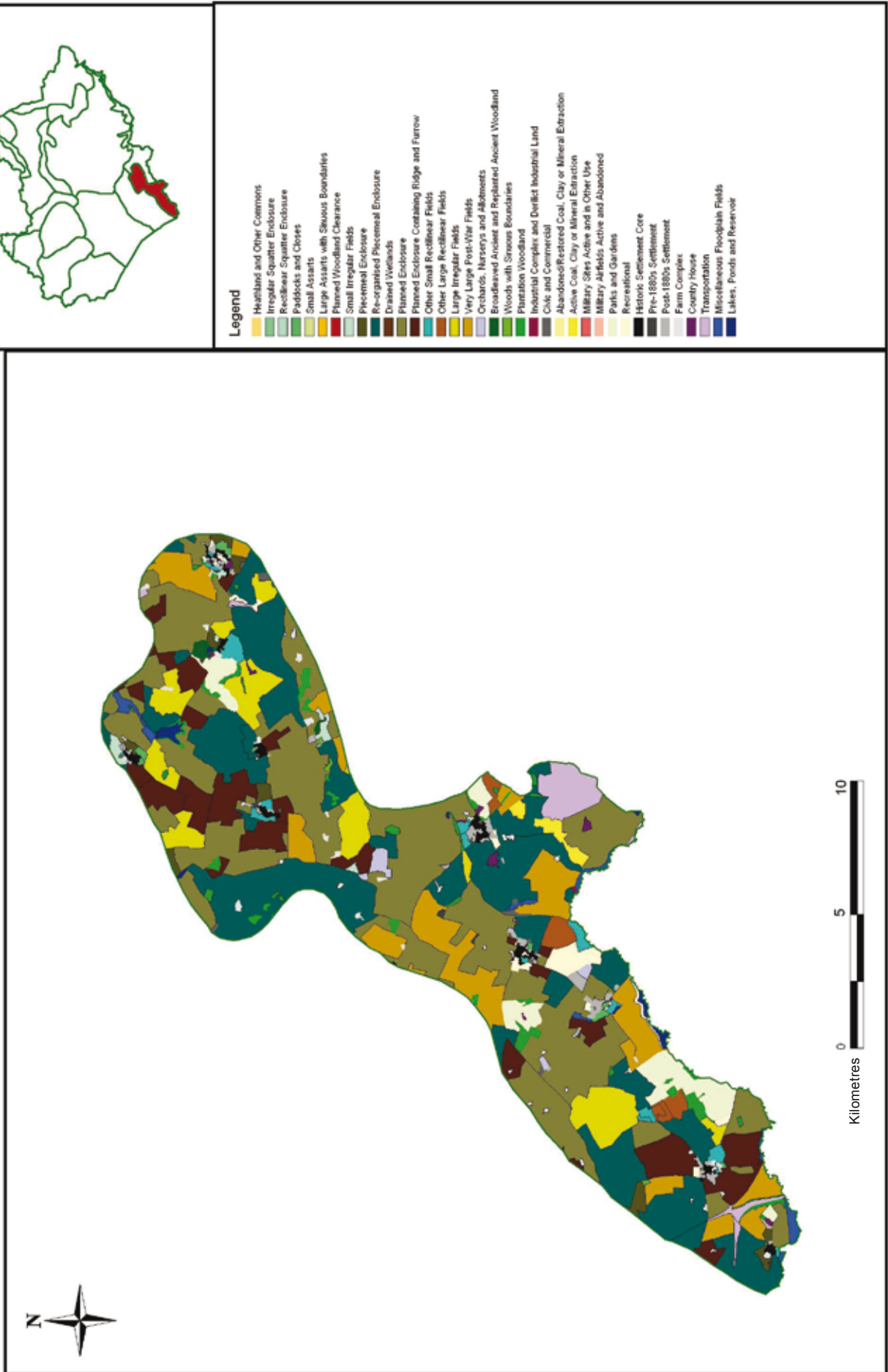


Leicestershire, Leicester and Rutland HLC:
Langley Lowlands



0 5 10
Kilometres

Leicestershire, Leicester and Rutland HLC:
Laughton Hills



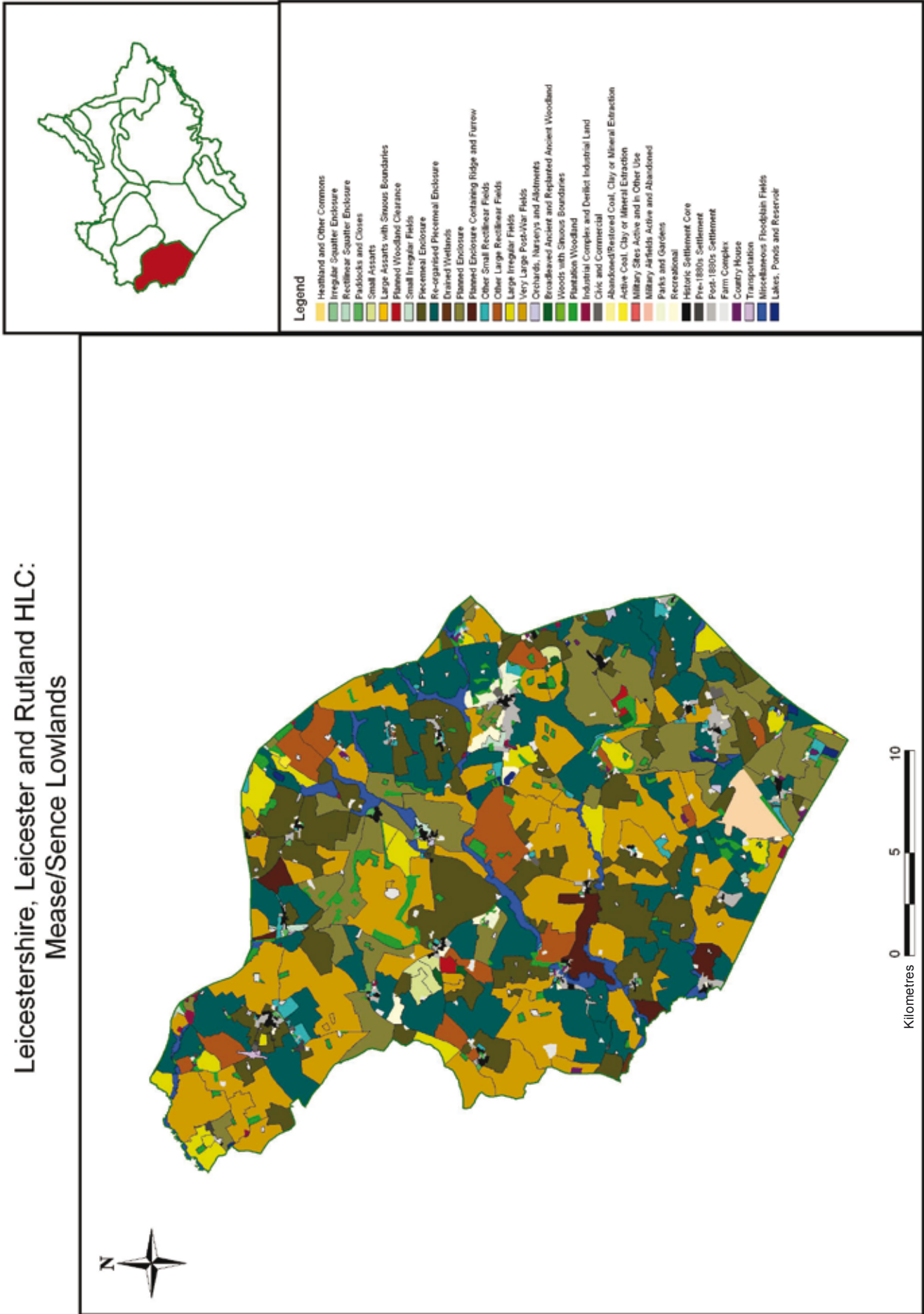
Leicestershire, Leicester and Rutland HLC:
Lutterworth Lowlands



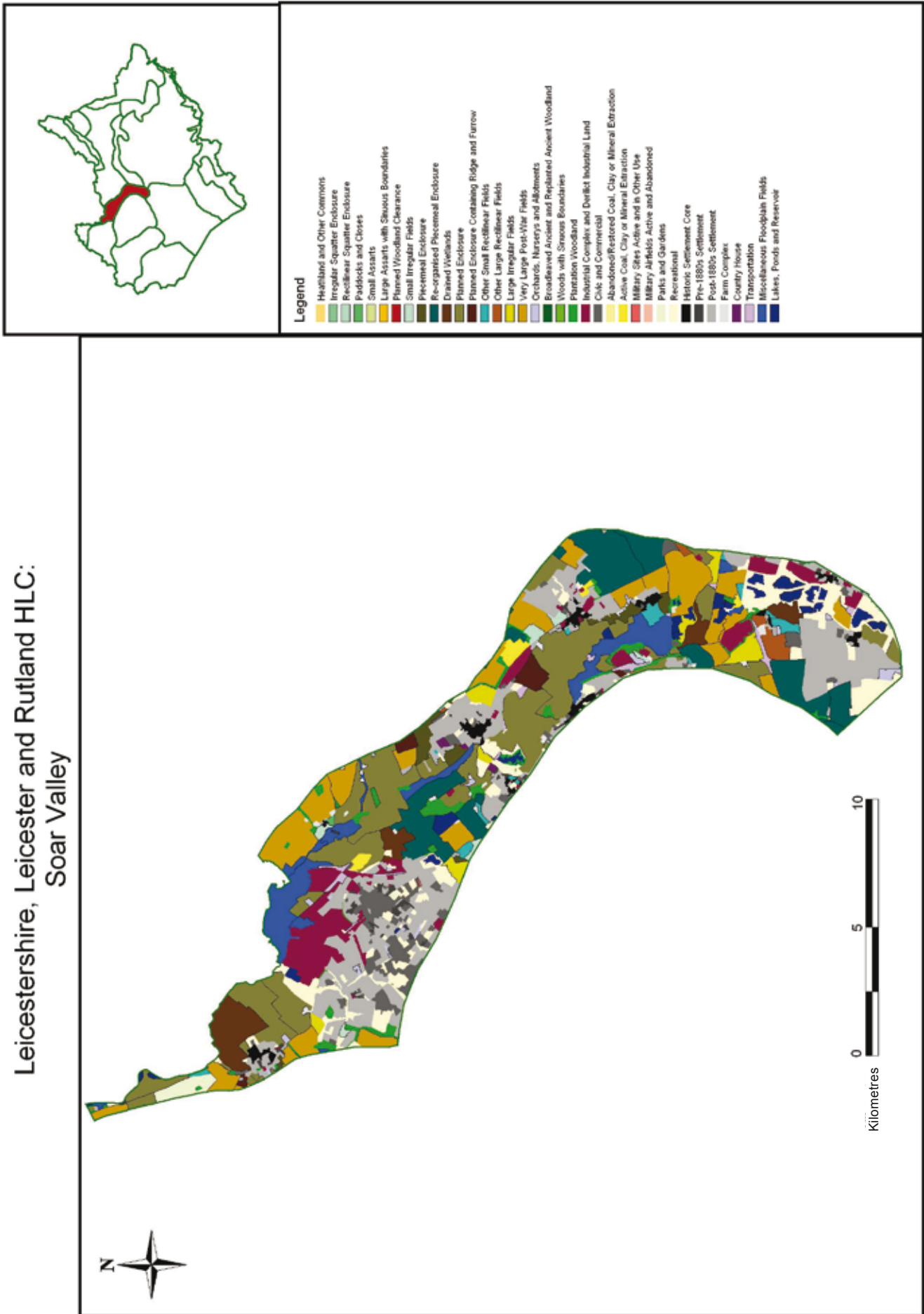
Legend

- Heathland and Other Commons
- Irregular Squatter Enclosure
- Rectilinear Squatter Enclosure
- Pastures and Closes
- Small Assarts
- Large Assarts with Sinuous Boundaries
- Planned Woodland Clearance
- Small Irregular Fields
- Piecemeal Enclosure
- Re-organised Piecemeal Enclosure
- Drained Wetlands
- Flanned Enclosure
- Flanned Enclosure Containing Ridge and Furrow
- Other Small Rectilinear Fields
- Other Large Rectilinear Fields
- Large Irregular Fields
- Very Large Post-War Fields
- Crochards, Narsseys and Abolments
- Broadleaved Ancient and Replanted Ancient Woodland
- Woods with Sinuous Boundaries
- Plantation Woodland
- Industrial Complex and Derlict Industrial Land
- Civic and Commercial
- Abandoned/Restored Coal, Clay or Mineral Extraction
- Active Coal, Clay or Mineral Extraction
- Military Sites Active and in Other Use
- Military Airfields Active and Abandoned
- Parks and Gardens
- Recreational
- Historic Settlement Core
- Pre-1800s Settlement
- Post-1800s Settlement
- Farm Complex
- Country House
- Transportation
- Miscellaneous Floodplain Fields
- Lakes, Ponds and Reservoirs

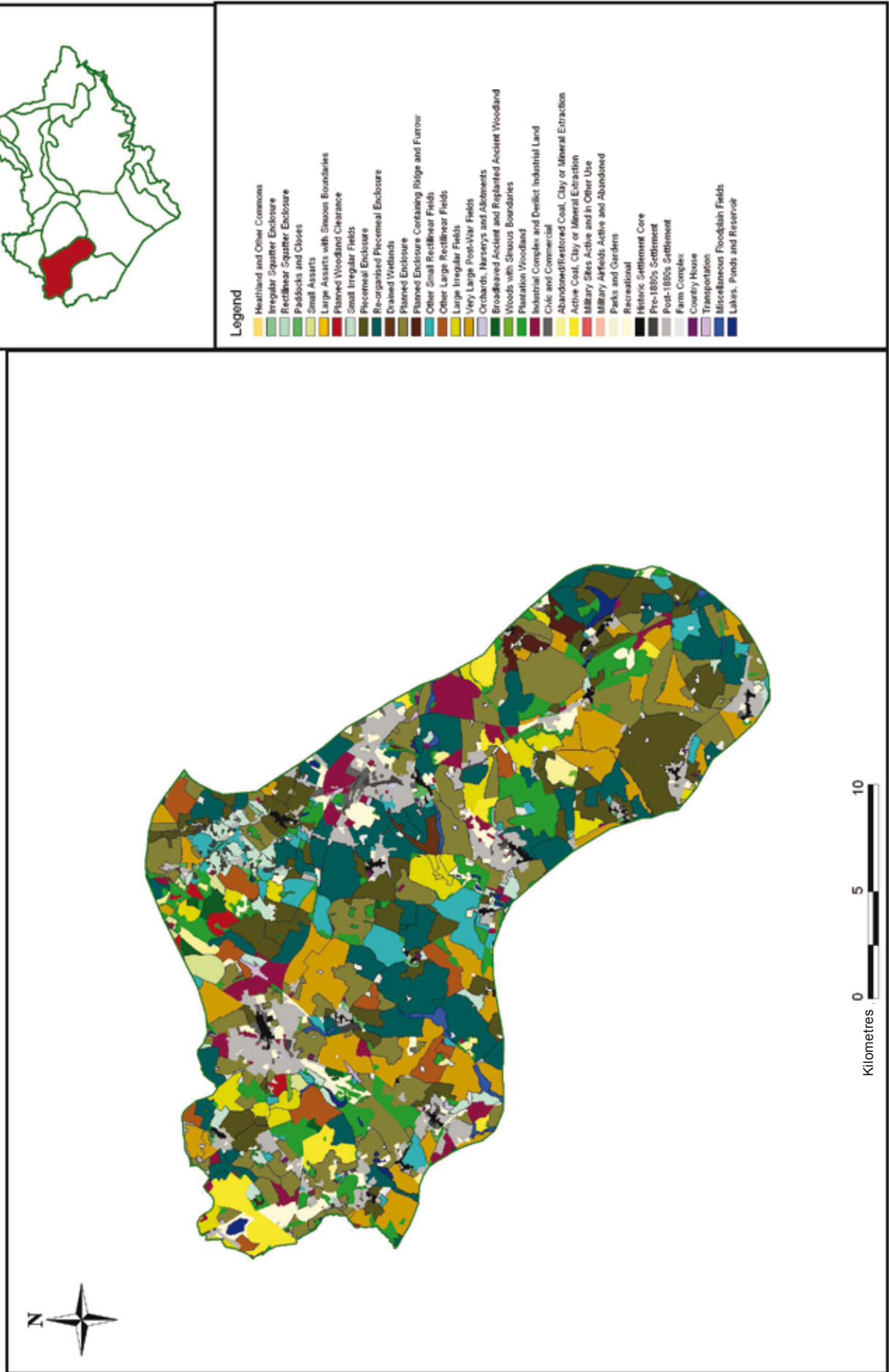
Leicestershire, Leicester and Rutland HLC:
Mease/Sence Lowlands



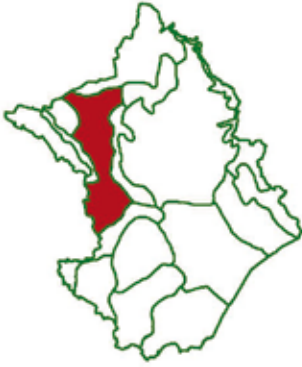
Leicestershire, Leicester and Rutland HLC:
Soar Valley



Leicestershire, Leicester and Rutland HLC:
The Coalfield



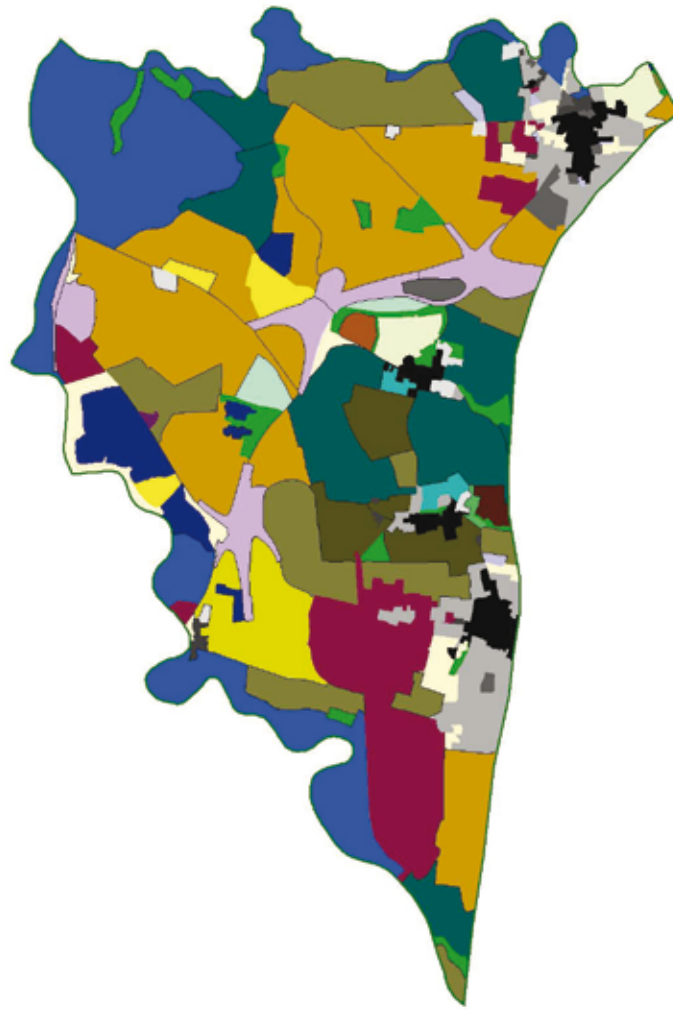
Leicestershire, Leicester and Rutland HLC:
The Wolds



Legend

- Heathland and Other Commons
- Irregular Squatter Enclosure
- Rectilinear Squatter Enclosure
- Paddocks and Closes
- Small Assarts
- Large Assarts with Slauson Boundaries
- Planned Woodland Clearance
- Small Irregular Fields
- Pivotal Enclosure
- Re-organised Pivotal Enclosure
- Drained Wetlands
- Planned Enclosure
- Planned Enclosure Containing Ridge and Furrow
- Other Small Rectilinear Fields
- Other Large Rectilinear Fields
- Large Irregular Fields
- Very Large Post-War Fields
- Crocords, Nurseries and Submeads
- Broadleaved Ancient and Replanted Ancient Woodland
- Woods with Slauson Boundaries
- Plantation Woodland
- Industrial Complex and Derelict Industrial Land
- Abandoned/Restored Coal, Clay or Mineral Extraction
- Active Coal, Clay or Mineral Extraction
- Military Sites Active and in Other Use
- Parks and Gardens
- Recreational
- Historic Settlement Core
- Pre-1880s Settlement
- Post-1880s Settlement
- Farm Complex
- Country House
- Transportation
- Miscellaneous Floodplain Fields
- Lakes, Ponds and Reservoir

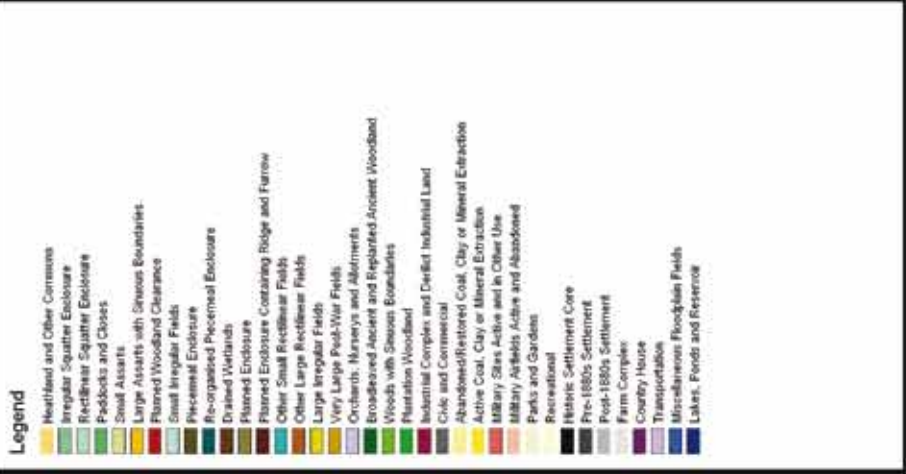
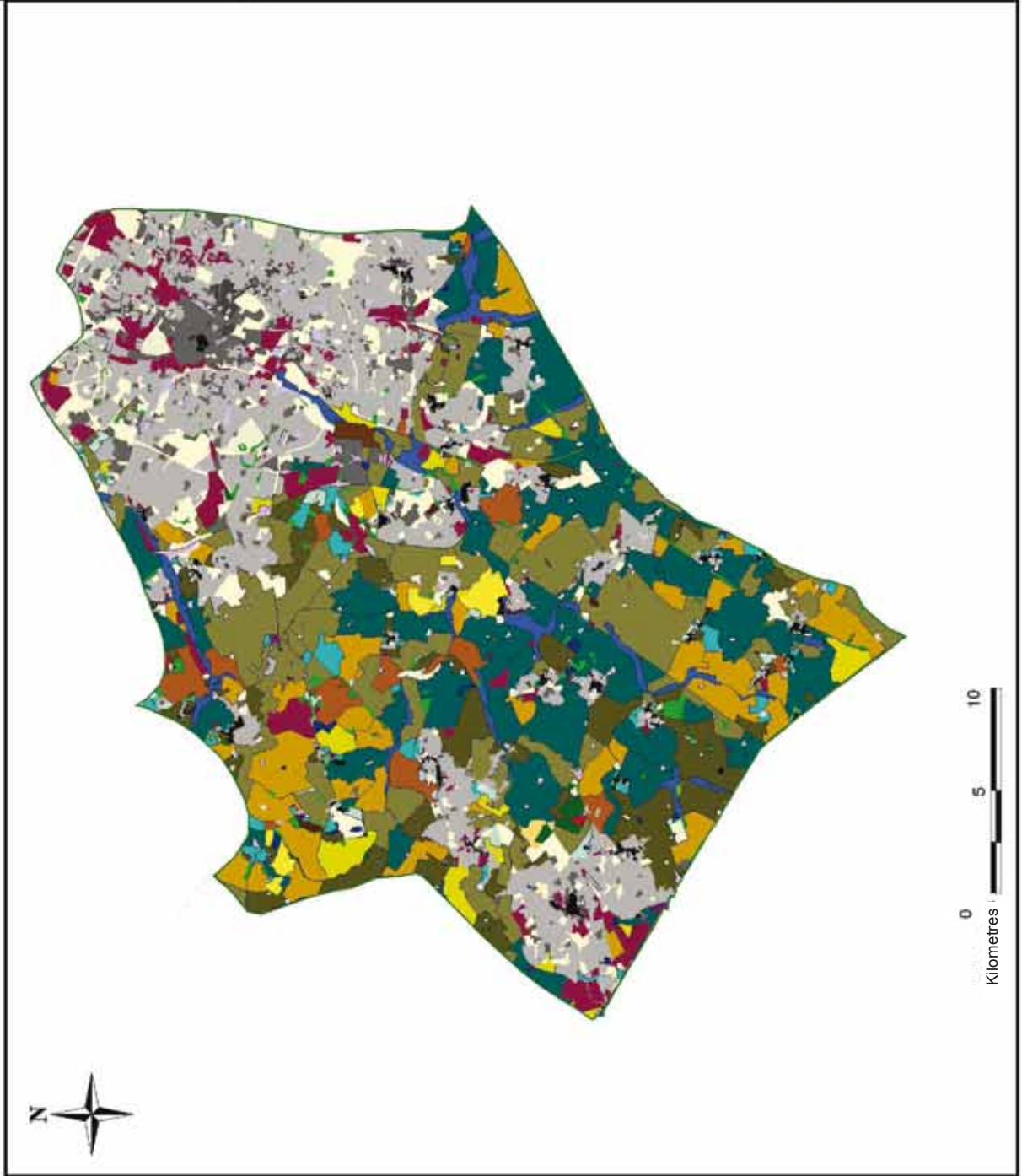
Leicestershire, Leicester and Rutland HLC:
Trent Valley



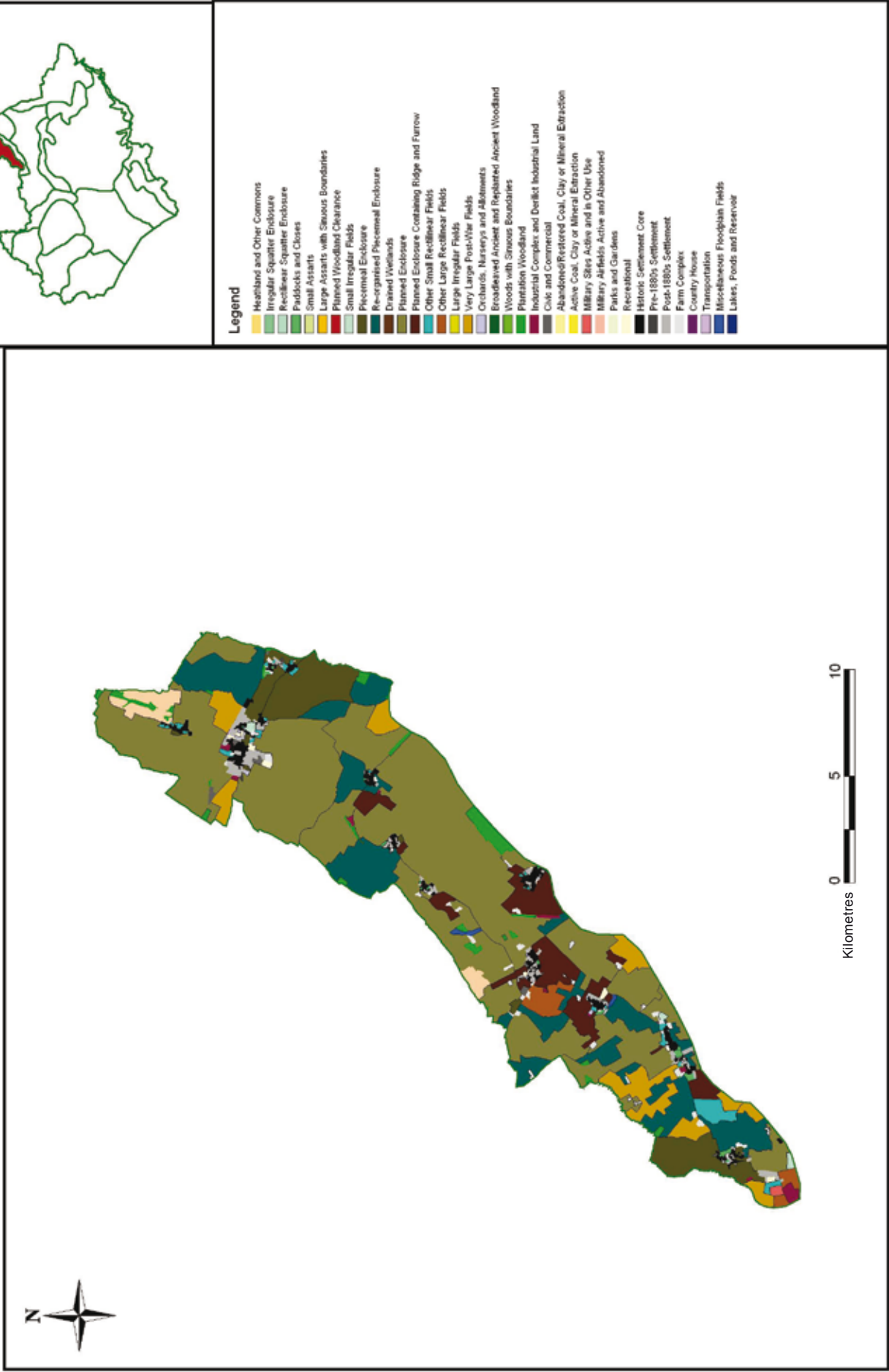
Legend

- Heavily and Other Commons
- Irregular Squatter Enclosure
- Rectilinear Squatter Enclosure
- Paddocks and Closes
- Small Assarts
- Large Assarts with Skewus Boundaries
- Planned Woodland Clearance
- Small Irregular Fields
- Piecemeal Enclosure
- Re-organised Piecemeal Enclosure
- Drained Wetlands
- Planned Enclosure
- Planned Enclosure Containing Ridge and Furrow
- Other Small Rectilinear Fields
- Other Large Rectilinear Fields
- Large Irregular Fields
- Very Large Post-War Fields
- Orchards, Nurseries and Abbotments
- Broadleaved Ancient and Replanted Ancient Woodland
- Woods with Skewus Boundaries
- Plantation Woodland
- Industrial Complex and Derelict Industrial Land
- Coke and Commercial
- Abandoned/Reclaimed Coal, Clay or Mineral Extraction
- Active Coal, Clay or Mineral Extraction
- Military Sites Active and in Other Use
- Parks and Gardens
- Recreational
- Historic Settlement Core
- Pre-1880s Settlement
- Post-1880s Settlement
- Farm Complex
- Country House
- Transportation
- Miscellaneous Floodplain Fields
- Lakes, Ponds and Reservoir

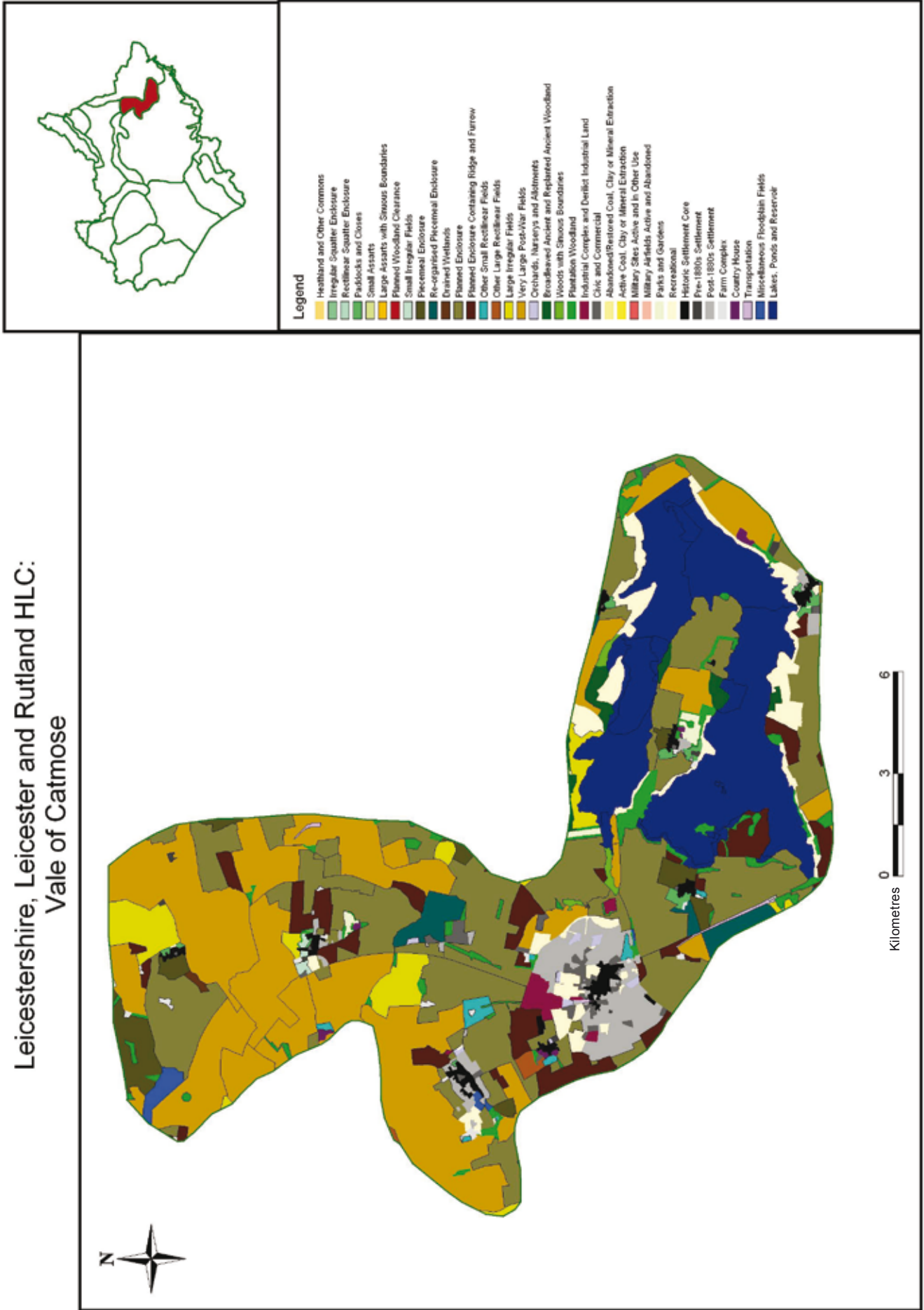
Leicestershire, Leicester and Rutland HLC:
Upper Soar



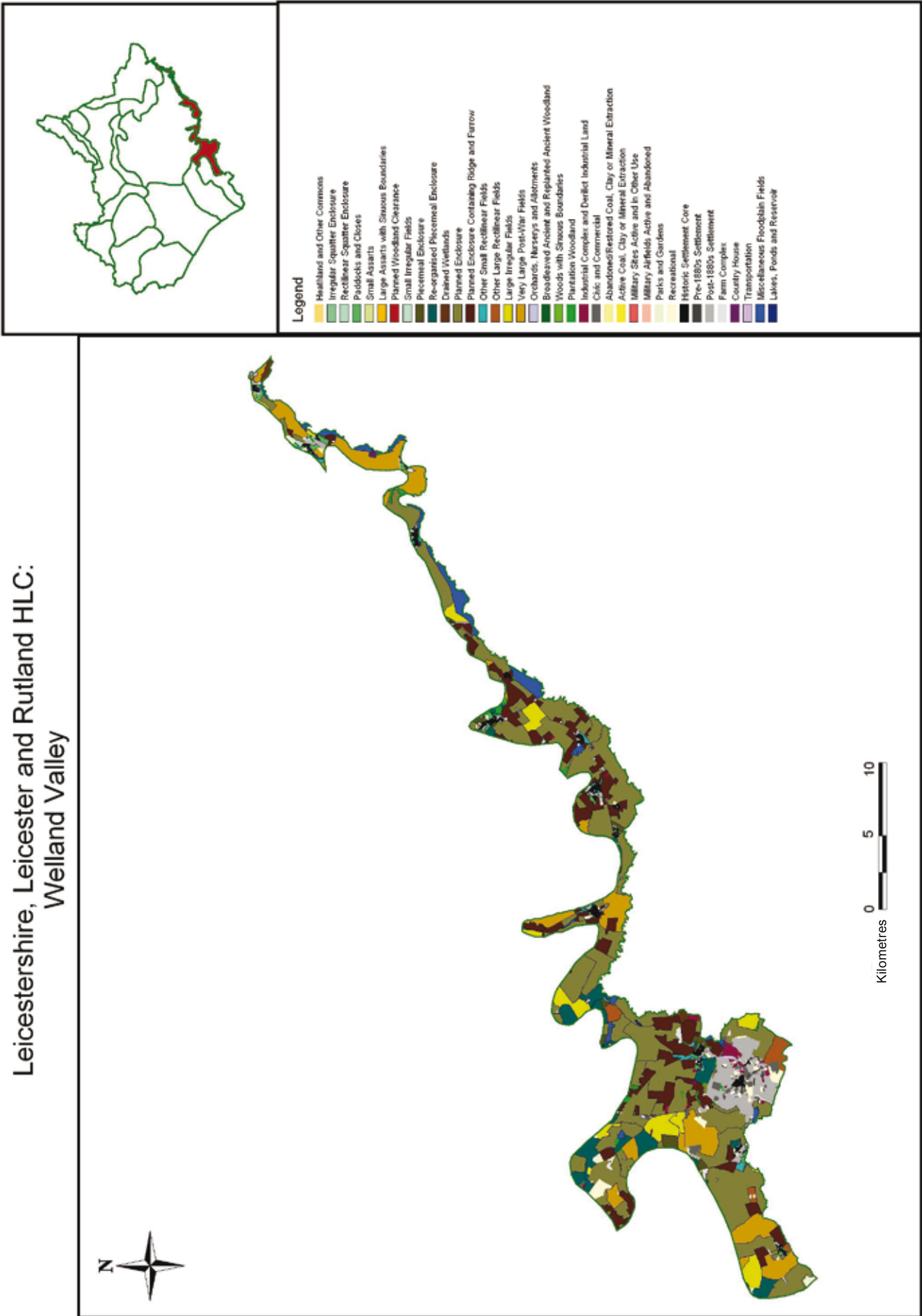
Leicestershire, Leicester and Rutland HLC:
Vale of Belvoir



Leicestershire, Leicester and Rutland HLC:
Vale of Catmose



Leicestershire, Leicester and Rutland HLC:
Welland Valley



Leicestershire, Leicester and Rutland HLC:
Wreake Valley



Legend

- Heathland and Other Commons
- Irregular Squatter Enclosure
- Rectilinear Squatter Enclosure
- Paddocks and Closets
- Small Assarts
- Large Assarts with Stucco Boundaries
- Planned Woodland Clearance
- Small Irregular Fields
- Piecemeal Enclosure
- Re-organised Piecemeal Enclosure
- Drained Wetlands
- Planned Enclosure
- Planned Enclosure Containing Ridge and Furrow
- Other Small Rectilinear Fields
- Other Large Rectilinear Fields
- Large Irregular Fields
- Very Large Post-War Fields
- Orchards, Nurseries and Allotments
- Broadleaved Ancient and Replanted Ancient Woodland
- Woods with Stucco Boundaries
- Plantation Woodland
- Industrial Complex and Defunct Industrial Land
- Civic and Commercial
- Abandoned/Restored Coal, Clay or Mineral Extraction
- Active Coal, Clay or Mineral Extraction
- Military Sites Active and in Other Use
- Military Airfields Active and Abandoned
- Parks and Gardens
- Recreational
- Historic Settlement Core
- Pre-1800s Settlement
- Post-1800s Settlement
- Farm Complex
- Country House
- Transportation
- Miscellaneous Floodplain Fields
- Lakes, Ponds and Reservoir

