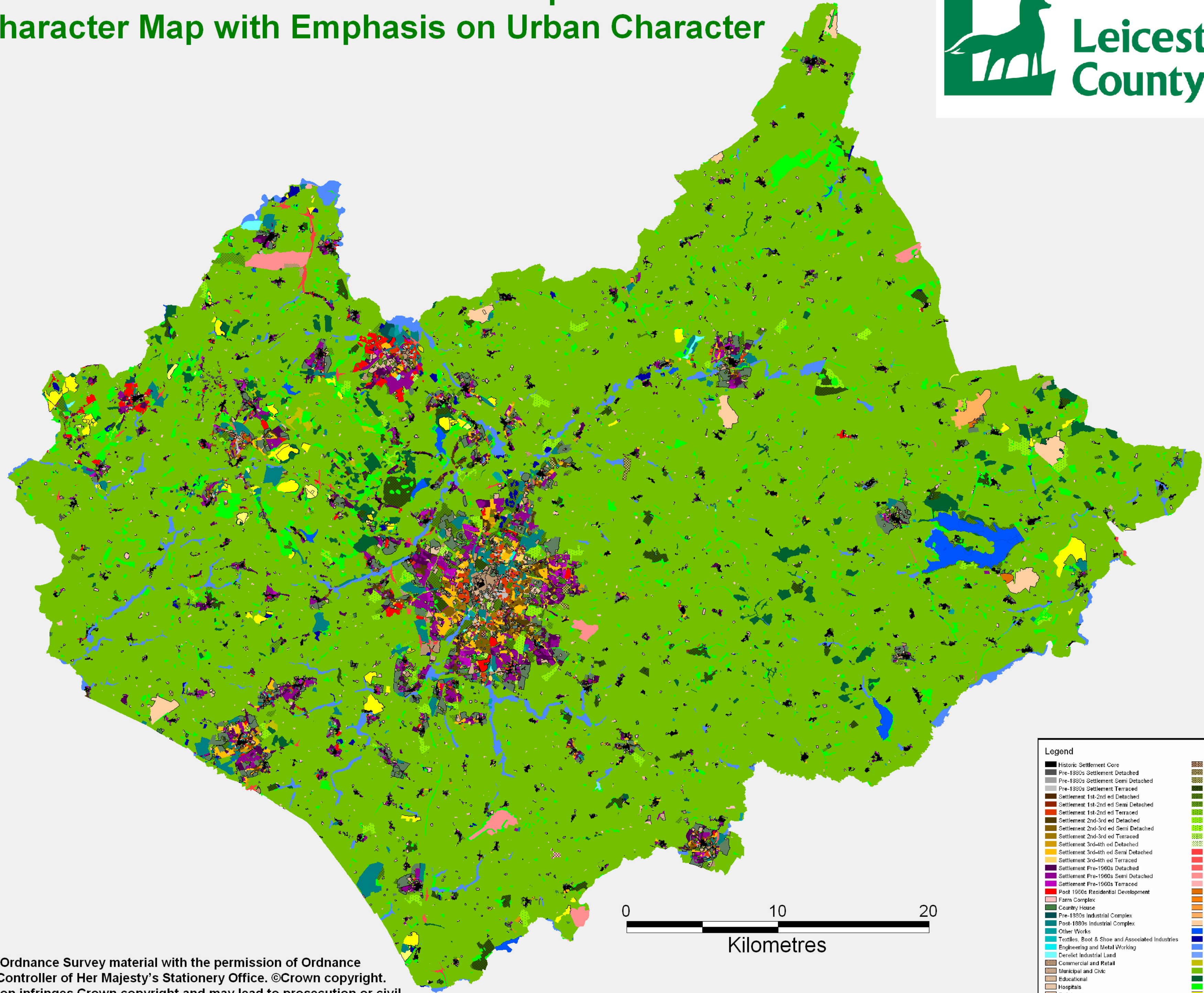
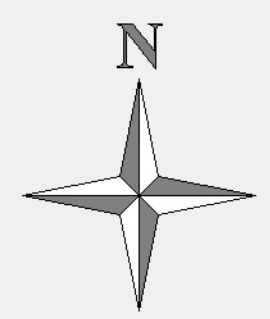


# Leicestershire and Rutland Historic Landscape Characterisation

## Current Character Map with Emphasis on Urban Character



**Legend**

Historic Settlement Core	Post War Allotments
Pre-1890s Settlement Detached	Pre-1890s Nursery/Horticulture
Pre-1890s Settlement Semi Detached	Post-1880s Nursery/Horticulture
Pre-1890s Settlement Terraced	Parks and Gardens
Settlement 1st-2nd ed Detached	Other Parkland
Settlement 1st-2nd ed Semi Detached	Sports Fields
Settlement 1st-2nd ed Terraced	Public Open Space
Settlement 2nd-3rd ed Detached	Golf Course
Settlement 2nd-3rd ed Semi Detached	Racecourse
Settlement 2nd-3rd ed Terraced	Cemeteries
Settlement 3rd/4th ed Detached	Village Greens
Settlement 3rd/4th ed Semi Detached	Major Road Junction
Settlement 3rd/4th ed Terraced	Service Station
Settlement Pre-1960s Detached	Train Stations/Slings/Cuttings
Settlement Pre-1960s Semi Detached	Civil Airports/Airfields
Settlement Pre-1960s Terraced	Canal Locks/Basin
Post 1960s Residential Development	Barracks/Training Ground
Farm Complex	Former Ordnance Depot Now Used For Other Purposes
Country House	Abandoned Ordnance Depot
Pre-1890s Industrial Complex	Military Airfield
Post-1890s Industrial Complex	Military Airfield Abandoned
Other Works	Reservoir
Textiles, Boot & Shoe and Associated Industries	Artificial Lake/Pond
Engineering and Metal Working	Miscellaneous Floodplain Fields
Derelict Industrial Land	Marsh
Commercial and Retail	Heathland and Other Commons
Municipal and Civic	Fields and Enclosed Land
Educational	Broadleaved Ancient and Woods with Sinuous Boundaries
Hospitals	Plantation Woodland
Religious	Coal, Clay and Mineral Extraction
Post-1880s Orchards	Abandoned/Restored Coal, Clay and Mineral Extraction
Pre-War Allotments	Landfill

This map is based upon Ordnance Survey material with the permission of Ordnance Survey on behalf of the Controller of Her Majesty's Stationery Office. ©Crown copyright. Unauthorised reproduction infringes Crown copyright and may lead to prosecution or civil proceedings. Leicestershire County Council. 100019271. Published 2011.