

Figure 1 Satellite image of Orchard Hospital and Long Reach Causeway with GPS markers

List of GPS Markers (accurate to within 10m)

- 1) Western turning circle of Orchard Hospital tramway. (Lat: 51.46572 Long: 0.21971)
- 2) Western passing point of Orchard Hospital tramway. (Lat: 51.4657 Long: 0.21992)
- 3) Base of Ward Block (Building F) (Lat: 51.46553 Long: 0.22081)
- 4) Building G (Lat: 51.46569 Long: 0.22096)
- 5) Central passing point of Orchard Hospital tramway. (Lat: 51.4657 Long: 0.22191)
- 6) Boiler House (Building H). (Lat: 51.4652 Long: 0.22435)
- 7) Workshop (Building D). (Lat: 51.46516 Long: 0.22434)
- 8) Building C. (Lat: 51.46524 Long: 0.22468)
- 9) Tram Shed (Building E). (Lat: 51.46549 Long: 0.22500)
- 10) Telephone/Telegraph pole associated with Building A. (Lat: 51.46524 Long: 0.22534)
- 11) Building A. (Lat: 51.46526 Long: 0.22538)
- 12) Southern end of surviving Long Reach Causeway near Binnie Road. (Lat: 51.46441 Long: 0.22722)
- 13) Treeline on line of original E-W tramway to Orchard Hospital. (Lat: 51.46562 Long: 0.22813)
- 14) Passing place on Long Reach Causeway. (Lat: 51.46775 Long: 0.22981)
- 15) Long Reach Gates. (Lat: 51.47152 Long: 0.23293)
- 16) End of accessible causeway. (Lat: 51.47188 Long: 0.23265)

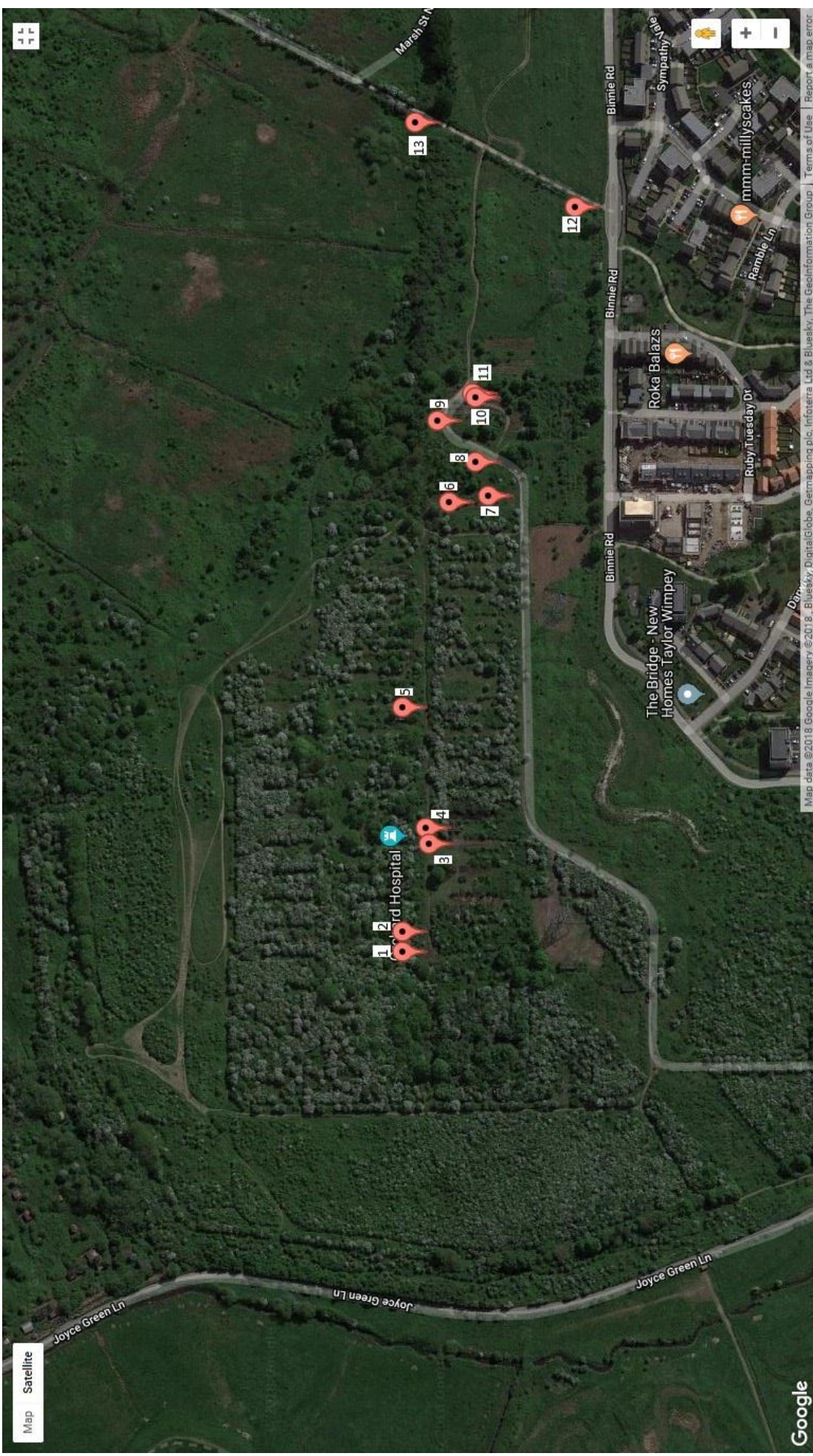


Figure 2 Satellite image of Orchard Hospital and part of Long Reach Causeway with GPS markers. The outline of the Orchard Hospital Site can be seen in the plant growth.