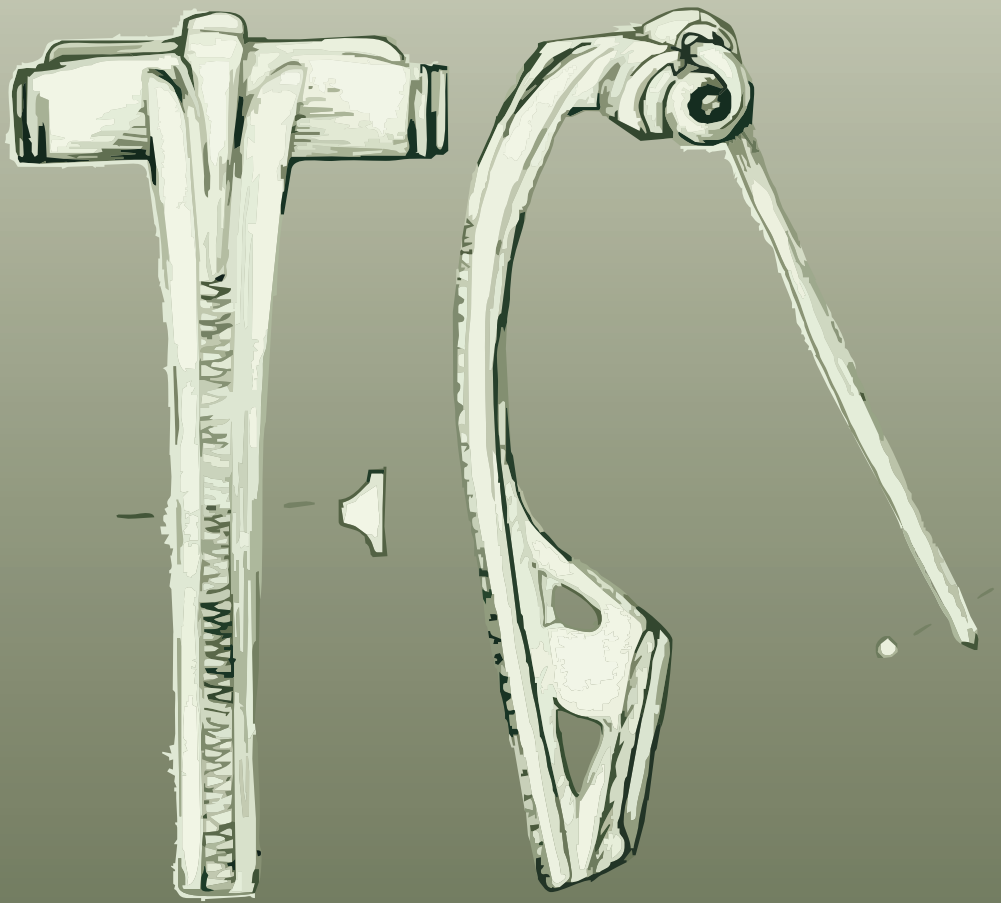


## CHAPTER 14

### Iron Age, Roman and Saxon metalwork



*by Ian Scott*

## 14 Iron Age, Roman and Saxon metalwork

*Ian Scott*

The Iron Age, Romano-British and Saxon/early medieval material treated in this part of the report comprises material from dated or phased contexts and typologically datable material from later or unphased contexts. The bulk of the material comes from the MTCP (site codes BAAMP99 & BAAMP00) and the LTCP sites (BAACP00). The remaining few objects are from M11 (Site Code: BAALR00) and LBR sites (BAALB00) (Table 14.1).

A total of 924 finds was recorded from the MTCP site. The LTCP site produced 212 objects. Both sites have produced a small number objects from medieval or post-medieval contexts, or objects identified as medieval or post-medieval objects on typological grounds. Where appropriate these are discussed in the report on medieval and post-medieval finds. The material here is discussed by site. The very limited amounts of material from the M11 and LBR sites do not require detailed discussion.

### **The LTCP site (BAACP00)**

#### *Assemblage Composition*

The metals assemblage from this site comprises 212 objects. The assemblage is interesting but small numerically and dominated by four functional groups: personal items (n = 65), nails (n = 55), miscellaneous pieces of strip, rod, bar, etc (n = 38) and small unidentified fragments ('unknown'; n = 42). Otherwise the range and number of finds is limited.

#### *Functional categories and identified finds*

There is a single weapon from a context (114038) of late Roman date, but is an arrowhead undoubted medieval type and not relevant to the discussion here. There are two tools, one probably a blade from pair of shears from a 2nd-3rd century Romano-British context (Cat. No.01). The deposit is a tertiary fill and the shears may be later in date. The other probable tool is of uncertain function (Cat. No.02) and from an unphased context.

The items relating to transport are horseshoes, are medieval or post-medieval in date and are omitted here. The single household object is a fragment of a flat-bottomed iron vessel, possibly part of a frying pan, from a late Roman context (Cat. No.03).

The personal items include hobnails (n = 55); the largest group (n=26) was from the fill (134025) of inhumation grave 134027. There is a small but interesting group of brooches and brooch fragments (n = 7, including Cat. Nos 04-07) and other personalia, including a bracelet (Cat. No.08) and a pair of tweezers (Cat. No. 09). The

brooches include a la Tène III type (Cat. No.04), a possible Nauheim derivative (Cat. No.05) and a Hod Hill type (Cat. No.06). Typologically all date to the mid 1st century AD and all are from contexts dated to the late Iron Age or early Roman phases. The bracelet (Cat. No.08) is plain with tapering pointed terminals. It is generally thought that bracelets are more commonly found in later Roman contexts, dating to the 3rd and 4th centuries, but this example is plain with few diagnostic features and could be earlier in date. The tweezers (Cat. No. 09) are Roman type but cannot be closely dated, although the examples under discussion are from an early Roman context.

The single item of security is a latchlifter (Cat. No.10) from a late Romano-British context.

Structural items are very limited in numbers. There is a fragment of a possible clamp or dog from a 2nd- or 3rd-century context and a U-staple from an early Romano-British context. Although nails are one of the more numerous classes of find, they were not found in great numbers on this site (n = 54). The nails come almost exclusively from Roman-British contexts (n = 49). They are common Romano-British site finds. We might expect to find more structural items and more nails on a settlement site with buildings.

Although the numbers of finds is limited, and some classes of finds that might have been expected, are absent, or present only in tiny numbers, the presence of the small group of brooches dating to the mid 1st century AD shows that there were people of wealth and prestige present on the site. The composition of the assemblage and the absence of what might be termed domestic finds and of structural metalwork raises questions about the nature of the occupation, or about the subsequent history of the site.

### *Context and dating*

A substantial number (n = 188; 88.7%) of the metal finds are from stratified and phased contexts and most of these are from contexts of Iron Age or Romano-British date (n = 184).

Amongst the apparently stratified material are three nail stem fragments from a middle Bronze Age context (115002). There are some small unidentified fragments from middle Iron Age contexts (128004 and 128005).

Amongst finds from late Iron Age and late Iron Age / Romano-British contexts are a la Tène III brooch (context 136042; Cat. No.04), a fragmentary la Tène III or Nauheim derivative brooch (context 125086; Cat. No.05), a Hod Hill brooch (context 129032; Cat. No.06) and fragments from a brooch of uncertain type with a hinged pin (context 121126; Cat. No.07). Other finds from early contexts include a fragment of bracelet (context 110003; Cat. No.08) and a pair of tweezers (context 143063; Cat. No.09). Other finds from late Iron Age/early Roman contexts include a small number of nails and some miscellaneous fragments (Table 14.2).

Finds from 2nd- to 3rd-century contexts are more limited, and include a probable shears blade (context 138028; Cat. No.01). The only personal items are two hobnails.

Other finds include a possible clamp (context 129025), a few nails, and some miscellaneous fragments.

Late Romano-British finds include a vessel fragment (Cat. No.03) from context 115023 and a latchlifter (context 143005; Cat. No.10). The medieval arrowhead from context 114038 has already been noted, and must be intrusive. There are 44 hobnails from late Roman contexts. They include 26 hobnails from context 134025 and five hobnails from context 134026, both fills of an inhumation burial (134027). Other hobnails came from contexts 115022 (6 hobnails) and 115023 (4 hobnails), and from context 140024 (3 hobnails). There are some nails and miscellaneous fragments (Table 14.2).

The datable finds comprise the Romano-British brooches, which are closely datable to the early to mid 1st century. As a group they are slightly earlier in date than the larger brooch assemblage from the MTCP site, which includes mid to late 1st-century forms.

### **Catalogue of selected objects from the LTCP site (BAACP00) (Fig. 14.1)**

#### **Tools**

- 01 Possible shears blade fragment. Tip of blade and most of handle missing. Fe. L 45 mm. BAACP00, ctx 138028, SF -. Phase: Romano-British 2nd – 3rd C AD. [ID 703]
- 02 Probable tool. It has a rectangular section handle or tang, which is looped over at the end, and cranked at the other end to a flat rectangular blade, which may be complete. Function uncertain. Fe. L 178 mm. BAACP00, ctx 915006, SF-. Unph. [ID 712]

#### **Household Equipment**

- 03 Vessel fragment from a flat-bottomed vessel with low steeply sloping sides. Fe. L 50 mm. BAACP00, ctx 115023, SF -. Phase: late Romano-British. [ID 708]

#### **Personal Items**

##### *Brooches*

- 04 La Tène III brooch. A one piece brooch probably with a four coil spring and internal chord. It has a long thin bow decorated near to pin with a row of relief crosses in a recessed panel. The remains of the catchplate show that it had large cut-outs. The brooch was one piece with a sprung pin (now lost). Cu alloy. L 71 mm. BAACP00, ctx 136082, SF 464. Phase: late IA/early Romano-British. [ID 720]

Compare an incomplete example from Baldock (Stead 1986a, 109 & fig. 40, no 1) and another, slightly plainer, from Saham Toney, Norfolk (Brown 1986, 15 & fig. 8, n 0.5). This form of brooch belongs to the pre-Roman tradition (see Bayley and Butcher 2004, 145), and can be dated to the early to mid 1st AD

- 05 Possible La Tène III, or Nauheim derivative brooch fragments. One fragment (L 22 mm) forms the top of the bow with part of the spring. A second piece forms a lower part of the bow (L 21 mm). These two pieces do not join, but the brooch seems to have comprised a narrow tapering strip bow edged with a slight groove or beading. There are also two fragments from the spring (L 13 mm & 23 mm). Cu alloy. L overall at least 43 mm. BAACP00, ctx 125086, SF 367. Phase: late IA/early Romano-British. [ID 716]

The precise form of the brooch is uncertain, but most probably it is a Nauheim derivative dating to the first century AD. See particularly an example from Richborough (Bayley and Butcher 2004, 53 & fig. 37, no.2) and generally examples from Fishbourne (Hull 1971, 100 & fig. 36, nos 1-8).

- 06 Hod Hill brooch with hinged pin. The bow is flat with two parallel ridges running along its length and very slightly curved in profile. The bow is angled near the head. The brooch is eroded and the catch plate is largely missing. Cu alloy. L 33 mm; W 14 mm. BAACP00, ctx 129032, SF 296. Phase: early Romano-British. [ID 714]

Compare an example from Baldock (Stead 1986, 120 & fig. 47, no. 109). The Hod Hill type dates to the mid 1st century and the Roman conquest.

- 07 Brooch fragments. Uncertain type. Had hinged pin. Fe. L 41 mm. BAACP00, ctx 121126, SF - . Phase: early Romano-British. [ID 699]

#### *Bracelet*

- 08 Plain bracelet with band of oval section. The surviving terminal tapers to a point. Cu alloy. L 58 mm; W 53 mm. BAACP00, ctx 110003, SF 100. Phase: late IA/early Romano-British [ID 713]

#### *Toilet Items*

- 09 Tweezers, formed from plain strip with slightly flared tips. Cu alloy. L 44 mm. BAACP00, ctx 143063, SF 437. Phase: early Romano-British [ID 719]

#### **Security**

- 10 Latchlifter formed from rod of rectangular section, with flat handle with terminal loop. Fe. L 195 mm. BAACP00, ctx 143005, SF 361. Phase: late Romano-British [ID 707]

### **The MTCP Site (BAAMP 99 & 00)**

#### *Assemblage composition*

The metalwork assemblage from the MTCP site is somewhat larger than that from the LTCP. It comprises 924 pieces. Two functional groups predominate: nails (n = 373) and personal items (n = 235). Other large functional groups are miscellaneous pieces (n = 110) and unidentifiable fragments ('Unknown') (n = 63). The functional range of the metal finds is quite limited.

#### *Functional categories and identified finds*

There is a socketed leaf-shaped spear-, or arrowhead (Cat. No.11) from a late Romano-British context, and an unstratified lead pistol ball. The latter is post-medieval, or later, in date.

The nine tools, or tool fragments, include two fragments from modern cast iron ploughshares, one from a context of early medieval date (354064). Otherwise only two objects are from phased contexts, a probable reaping hook (Cat. No.13) from a late Romano-British context (330084), and a copper alloy punch (Cat No. 15) from an early Romano-British context (7204). A second reaping hook (Cat. No.14) comes from context 301001. The latter context is unphased, although finds from it were predominantly Roman-British, and it is comparable to examples from Romano-British contexts. Other tools found in this context are a possible punch (SF 729), a handaxe or hatchet (SF 1092) and a saw (Cat. No.12). The handaxe is clearly quite modern, and the identification of the punch is not certain, and it is not closely dateable. The small, but complete hand saw (Cat. No.12) is similarly not dateable typologically with any confidence.

The items relating to transport include seven horseshoes or horseshoe fragments and four horseshoe nails, which are all medieval or later in date, although a horseshoe fragment, a possible horseshoe fragment, and a horseshoe nail came from contexts (336064, 326062 and 347034) of late Romano-British date. The other transport finds are a probable fragment of tire from a wheel (SF 1013) and a harness bell (Cat. No.16), both from context 301001, which is undated.

Household items, which number 20 items, include a Romano-British spoon bowl (Cat. No.17) from a late Romano-British context (350061), and cleaver (Cat. No.18) of Romano-British type from topsoil (301001). Two possible blade fragments come from late Roman-British contexts (315076 SF 501 & 353009). There are three knives of early medieval form (Cat. Nos 19-21) from late Saxon (317002) and early medieval contexts (310135; 357057), and a possible knife from an early medieval context (310139). Other knives include an undiagnostic blade fragment (context 301001, SF 938) and two knives of post-medieval form with arched backs (context 301001, SF 939; and context 328279). The latter two knives are catalogued with the medieval and post-medieval material, even though one is from the upper fill of a late Romano-British feature (328279).

There is a fragment from a small flat-bottomed iron vessel, possibly a frying pan (Cat. No.22).

The remaining household items are six lead plugs that were used to repair ceramics, which could well be Romano-British but are from unphased contexts (301001 (n = 5); 1000), and two paper clip rivets of late medieval or post-medieval date (context 301001 SF 793; context 1006 SF 740 - both unphased).

The main class of material, personal items, comprises 235 items, and includes 186 hobnails and a single boot clamp. The remaining 48 items include items of apparel, pieces of jewellery and toilet items. The items of apparel or dress include a large decorated button-and-loop fastener (Cat. No.23), which is from an undated context (1006), and two plain studs with T-bar stems (Cat. Nos 24-5), one unphased but one from a Romano-British context. There are two small early medieval hooked tags (Cat. Nos 26-7), one from an early medieval context, and a belt stud with a diamond-shaped head and traces of enamel decoration (Cat. No.28), which is unphased and of uncertain date. There is a fragment of circular buckle or penannular brooch (Cat. No.29) from a late Romano-British context. Cat. No.30 is a distinctive heart-shaped late Roman strap end, although undated stratigraphically. Other items of apparel include a post-medieval button (SF 1501), a buckle fragment (SF 1095), a buckle plate fragment (SF 967) and a plain belt plate (SF 904) all from context 301001 and undated stratigraphically. Another buckle fragment came from a late Saxon context (SF 301, context 307015), but is of later medieval type and is catalogued with the medieval and post-medieval material.

The items of ornament, or jewellery, comprise seventeen brooches or brooch fragments (including Cat. Nos 31-45), five hairpin, or pin, fragments (including Cat. Nos 46-7), and eleven bracelets or bracelet fragments (Cat. Nos 48-58). There is also a possible finger ring (Cat. No. 59). The brooches include a fragment of a la Tène III brooch (Cat. No.31), a so-called 'Nauheim derivative' (Cat. No.32), and *Aucissa*

brooch (Cat. No.33), a Hod Hill brooch (Cat. No.34), a one-piece Colchester (Cat. No.36), six two-piece Colchesters (Cat. Nos 37-42) and a 'Dolphin' brooch (Cat. No.43). All are types that are of mid- to late-1st-century date, and most are from late Iron Age / early Romano-British, or early Romano-British contexts.

The hairpins include an almost complete pin with large head (Cat. No.46) from an early medieval context, and another with a smaller head (Cat. No.47), which is unstratified. The bracelets include examples of early forms (Cat. Nos 48-9), but the majority (Cat. Nos 50-58) probably date to the 3rd and 4th centuries. They come from late Roman contexts or are undated. There is a single possible plain finger ring (Cat. No.59) that was unphased.

The single toilet item comprises a pair of tweezers (Cat. No. 59).

Items of security include a latchlifter (Cat. No. 61), a handle from barb-spring padlock keys (Cat. No. 62), and a length of copper alloy chain (Cat. No.66) from late Roman contexts. The chain may be more decorative than functional. A handle from barb-spring padlock key (Cat. No. 63), a bolt from a barbed-spring padlock (Cat. No.64), a lever lock key (Cat. No. 65) all from undated contexts.

The remaining objects comprise limited numbers of structural fittings (eg Cat. No. 67) a good number of nails (Appendix 2), and a small number of unidentified objects (Cat. Nos 68-75).

The number of finds is not large, and structural finds, household objects, tools are very poorly represented. By contrast personal items and in particular brooches and bracelets are well represented. The skewed composition of the metal assemblage may well give insights into the nature of the occupation of the site.

### *Context and dating*

More than half of metal finds from the MTCP site are stratified (n = 746; 80.7%) and most of these come from late Iron or Romano-British contexts (n = 687). There are small numbers from late Saxon or early medieval contexts (n = 34) and from medieval and post-medieval contexts (n = 18).

There are five finds from late Iron Age/early Romano British contexts. These include two brooches, a 'Nauheim derivative' (Cat. No.32) and the much eroded and probably burnt fragments of a two-piece brooch (Cat. No.44) both from context 328013, which was the fill of a cremation burial 328012. The other finds are binding (ctx 360021) and two nails (context 1909).

Finds from early Romano-British contexts are more numerous (n = 59), but include 12 nails, six hobnails, three miscellaneous pieces and 28 small fragments ('unknown'). The catalogued and illustrated finds comprise a copper alloy punch (Cat. No.15), and six brooches - an Aucissa brooch (Cat. No.33), four two-piece Colchesters (Cat. Nos 37-39, 42) and a Dolphin brooch (Cat. No.43). Finally there are three pin fragments (uncatalogued).

A small number of the early Roman finds came from cremation burials. Cremation 330008 (fill 330007) contained two pin fragments, and a fragment of wire, all copper alloy, Cremation 330018 (fill 330017) contained the Dolphin brooch (Cat. No.43), and Cremation 349139 (fill 349147) contained fragments of a probable Colchester two-piece brooch (Cat. No.42) together with five nails and five hobnails, and (fill 349154) one hobnail and an unidentifiable small fragment of iron.

From Romano-British contexts dated to the 2nd and 3rd centuries there are 17 finds. These include a stud (Cat. No.24) and an eroded two-piece brooch (Cat. No.35). The remaining finds comprise five nails, two structural items, two hobnails, four miscellaneous pieces, and two small unidentified fragments.

Late Romano-British contexts produced the most finds (n = 605), although the bulk of these comprised nails (n = 285) and hobnails (n = 174). There are also 57 miscellaneous pieces, 25 pieces of slag or cinder, and 24 small unidentified fragments.

The finds from contexts of this period included a small spear-, or arrow-, head (Cat. No.11) and a reaping hook (Cat. No.13). A horseshoe (contexts 336064), a possible horseshoe fragment (context 326062) and horseshoe nail (context 347034) are from contexts of late Roman date but are medieval or later types.

The household items include a spoon bowl of Roman type (Cat. No.17) and two poorly preserved knives (contexts 315076 SF 501; and context 353009) (not catalogued). A third knife (context 328279) is of a medieval or later form and is catalogued with the medieval and post-medieval finds.

The personal items, which number 179, include 174 hobnails and a single boot clamp. The majority of hobnails from the site are from later Roman contexts (Table 14.5). Most come from just four contexts: contexts 6604 (n = 52), 319125 (n = 24), 335022 (n = 23) and 348016 (n = 28). The other personal items are three cable pattern bracelets or bangles (Cat. Nos 50-52), and a circular buckle, or brooch fragment (Cat. No.29).

Other items from late Roman contexts include a possible lead weight (context 6606) (not catalogued), and a latchlifter (Cat. No.61), a barb spring padlock key handle (Cat. No.62) and possible key handle (context 1608, SF 13512) (not catalogued), and length of copper alloy chain with small S-shaped links (Cat. No.66).

The remaining items from late Roman contexts include five structural pieces (including Cat. No.67), five 'bindings', and eleven unidentified pieces (including Cat. Nos.68-72).

The finds from late Saxon contexts number seven and include one nail and four unidentified small fragments. Otherwise the finds include a whittle-tang knife (Cat. No.20) of good Saxon form (Ottaway form C) and a buckle fragment (context 307015 SF 301) of medieval type. The latter is catalogued with the medieval and post-medieval finds.



A further 27 finds come from early medieval contexts and included three knives: two are of good Saxon type (Cat. Nos 19 and 21), and the third is poorly preserved not diagnostic (context 310139). No. 19 is of Ottaway form D. Other interesting finds include two hooked tags (Cat. Nos 26-27) and a hairpin (Cat. No.46). There are four unidentified objects (including Cat. Nos 73-74). The remaining finds comprise one structural fitting, two miscellaneous fragments, seven nails, five horseshoe nails, a hobnail and a fragment of a cast iron plough share (context 354064) which is intrusive.

Overall the metalwork assemblages lack significant domestic or craft elements. This may reflect the areas excavated, or possibly the types of feature investigated. However, it may be that the strong element of personal ornament in the assemblage, particularly the Romano-British portion, reflects the nature of the occupation of the site. It is also to be noted that some objects were recovered from cremation burials.

### **Catalogue of selected objects from the MTCP site (BAAMP99 & BAAMP00)** **(Figs 14.2-14.5)**

#### **Arrowhead**

- 11 Arrowhead, or small spearhead, socketed with a leaf-shaped blade. Fe. L 77 mm. BAAMP00 ctx 329027, SF -, Phase: late Romano-British. [ID 412]

#### **Tools**

- 12 Saw, complete. It has a blade with a slightly curved toothed edge and a curved back. The blade is 140 mm long. The handle is in one piece with the blade and is of oval section, slightly curved and ending in a down-curved knobbed terminal. Fe. L 224 mm. BAAMP00, ctx 301001, SF 1044. Unph. [ID 65]

A small hand saw, comparable perhaps to a modern pad saw. Roman handsaws are known, but usually have tapering triangular blades and wooden handles attached by rivets (eg. Verulamium: Manning 1972, 166 & fig. 61, no. 12). An example from Hambledon Hill (Manning 1985, 19-21 & pl.9, no. B21) has a handle attached by a rivet, but the blade has a curved or arched back and straight cutting edge. There is a small saw from London (Wheeler 1930, 79 & pl. xxxvi, no. 5), which has a tapering triangular blade and a solid handle, but it is not similar in form to the example under discussion. The handle of the Stansted saw is reminiscent of the handle of a cleaver or knife from Hod Hill (Manning 1985, 120 & pl.57, no. Q94). It is not possible to be certain of the date of this saw.

- 13 Reaping, or pruning, hook, with flanged socket. The socket is incomplete, but there is a single extant nail to secure the handle. The strongly curved blade has an oval eye on its outer edge. The purpose of the eye is uncertain. Fe. L 80 mm; W 70 mm. BAAMP00, ctx 330084, SF -. Phase: late Romano-British. [ID 273]

The purpose of the eye, which is clearly visible in the outer edge of the blade, is uncertain. The form of the blade conforms to Manning's Type 2 reaping hook (1985, fig. 14: reaping hook 2) and is comparable to examples from Hod Hill and Hambledon Hill (Manning 1985, 53-5, pl. 23, F30-F32 & F35).

- 14 Reaping, or pruning, hook, with complete socket and small strongly curved blade. A single nail secured the head. Fe. L 110 mm; W 80 mm. BAAMP00, ctx 301001, SF 748. Unph. [ID 37]

Comparable small reaping hooks have been found at Caerwent (Jones nd, 44, nos 20-22). These may not be Romano-British examples. The Caerwent examples come from old excavations and are not securely stratified.

- 15 Punch with tapering circular section stem, the broader end is slightly flared and (?)hammered. Cu alloy. L 124 mm. BAAMP 99, ctx 7204, SF 13525. Phase: early Romano-British. [ID 605]

## Transport

- 16 Harness bell, with clapper missing, but otherwise well preserved. Lathe turned and spun. It has a broad flared body stepped at the top with a domed top pierced with two holes for attachment of the clapper and/or suspension. Cu alloy. D 45 mm; Ht 29 mm. BAAMP00, ctx 301001, SF 843. Unph. [ID 71]

There is a similar bell amongst votive finds from Woodeaton, Oxfordshire (Bagnall Smith 1998, 174 & fig.11, no.16.1). This is identified as part of a priest's regalia.

## Household equipment

### *Cutlery*

#### Spoon

- 17 Spoon bowl, mandolin-, or fig-, shaped. Crummy Type 3. Cu alloy. L 39 mm, W 26 mm. BAAMP00, ctx 350061, SF 555. Phase: late Romano-British [ID 109]

Parallels from Colchester (Crummy 1983, 69 & fig. 73, nos 2016, 2018-19), Aldborough (Bishop 1996, 14 & fig. 7, no. 26) and Richborough (Wilson 1968, 101 & pl. xlv, no. 180). In the latter example the bowl and handle are separately formed and joined by a tenon. Although the Stansted example consists of the bowl alone there is no evidence that the handle was separately formed. The form appears to be used throughout the Roman period.

#### Knives

- 18 Cleaver with socketed triangular blade and curved cutting edge. Triangular cross-section. Roman type. Fe. L 185 mm. BAAMP00, ctx 301001, SF 752. U/S. [ID 39]

This form of cleaver is one of a number of types common in the Roman period (see for examples in Manning 1976, fig. 22, nos 131, 135-36). This example is of Manning 2a cleaver with a straight back and strongly curved cutting edge (Manning 1985, 120-23 & fig. 30).

- 19 Knife blade with curved back and edge. No extant tang. Fe. L 73 mm. BAAMP00, ctx 310135, SF -. Phase: early medieval. [ID 261]

A knife that conforms to Ottaway form D, with a curved back (Ottaway 1992, 572: see esp. fig. 234, no. 2934)

- 20 Whittle-tang knife blade. The tang is cranked in relation to the blade, which is narrow and of triangular section. Saxon. Fe. L 140 mm. BAAMP00, ctx 317002, SF 303. Phase: late Saxon. [ID 156]

A knife of Ottaway Type C (see in particular examples from York: Ottaway 1992, fig. 233, no. 2877, & fig. 234, no.2937).

- 21 Whittle-tang knife fragment. The tang and blade are cranked. Triangular section blade. Saxon form. Fe. L 68 mm. BAAMP00, ctx 357057, SF -. Phase: early medieval. [ID 258]

Fragment of a knife similar to No. 20.

### *Vessel fragments (not illustrated)*

- 22 Vessel fragment, shallow sloping side. Fe. L 42 mm; Ht 34 mm. BAAMP00, ctx 314067, SF -. Phase: uncertain. [ID 367]

## Personal Items

### *Items of Dress*

- 23 Button and loop fastener with elongated rectangular head decorated with enamel inlay. The decoration Wild Class VIa (Wild 1970, 141). Cu alloy. L 49 mm; W 22 mm. BAAMP00, ctx 1006, SF 702. Unph. [ID 113]

This fits broadly into Wild's Class VI, with rectangular head and enamelled decoration (Wild 1970, 141 & fig.2, IVa). The decorative scheme is curvilinear rather than the more usual rectilinear scheme with square and triangular enamel panels, and has late Celtic affinities. Compare for example the decoration on a cheek piece or 'slider' from the Eckford Hoard, which MacGregor thought might be of south-eastern manufacture (MacGregor, 1976, vol. 1, 38, vol. 2, no. 45). They are generally thought to be for fastening clothing, but there are suggestions that they might have been used for fastening harness. This example is quite large and solid and could have been used as part of a harness. Generally button and loop fasteners seem to date from before the end of the 2nd century (Wild 1970, 146).

- 24 Stud with T-bar stem and flattish circular head with central knob. Cu alloy. D 19 x 17 mm. BAAMP00, ctx 328268, SF 171. Phase: Romano-British 2nd-3rd AD. [ID 82]

See an example from Fishbourne, from a late 3rd-century destruction level (Cunliffe 1971, 112 & fig.46, no.109)

- 25 Stud with T-bar stem and flattish circular head with central knob. Similar to Cat. No.19. Cu alloy. D 18 x 17 mm. BAAMP00, ctx 301001, SF 1073. Unph. [ID 81]

Similar to No. 24.

- 26 Circular hooked tag pierced by a pattern of 7 ring and dot motifs. Hook missing, but scar where it was attached. Cu alloy. D 11 mm. BAAMP00, ctx 310139, SF-. Phase: early medieval. [ID 72]

A small early medieval clothes fastener. There are broad parallels from Hamwic (Hinton 1996, fig. 4, nos 36/190 & 169/488), Winchester (plain examples: Hinton 1990a, 552 & fig.149, nos 1426-27) and from Maiden Lane, London (Blackmore 1988, 127 & fig.35, nos 8-9). The Stansted examples are small and of lesser quality than many examples.

- 27 Circular hooked tag pierced by a pattern of five small holes. Hook missing. Cu alloy. BAAMP00, ctx 310139, SF-. Phase: early medieval. [ID 73]

Similar to No. 26.

- 28 Stud with diamond-shaped head decorated with enamel inlay. The stem is of square section. Cu alloy. L 23 mm; W 20 mm; Ht 12 mm. BAAMP00, ctx 301001, SF 1048. Unph. [ID 133]

- 29 Circular buckle or brooch comprising incomplete ring with thickening at one end. Circular section. Fe. D 30 mm. BAAMP 99, ctx 2305, SF 1350. Phase: late Romano-British. [ID 548]

- 30 'Heart-shaped' strap end, with central motif of dot with two concentric rings. It is edged by a border of small ring and dot motifs. Cu alloy. L 34 mm; W 25 mm. BAAMP00, ctx 301001, SF 851. Unph. [ID 120]

Broadly this falls into a class of strap ends described as 'heart-shaped' by Simpson (1976, 201-02 fig. 5). This example does not exactly match the description of Simpson, in that it lacks the double-leaf plate attachment, and the top is flat and plain. It is possibly a copy of a late Roman form rather than an actual example.

#### *Brooches*

- 31 La Tène III brooch fragment. Broad flat upper portion of bow with slight decorative grooving. Little of the spring extant. Cu alloy. L 13 mm. BAAMP00, ctx 301001, SF -. Unph. [ID 88]

- 32 Probable Nauheim derivative brooch, probably one piece, with strip bow decorated with parallel grooves, and narrowing to plain unpierced catch plate. The pin is missing, but one fragment of spring survives. Fe. L 53 mm. BAAMP00, ctx 328013, SF-. Phase: late IA / early Romano-British. [ID 312]

- 33 Possible *Aucissa* brooch fragments (x 5), including a probable bow fragment and part of the pin. Cu alloy. L - mm. BAAMP00, ctx 328015, SF -. Phase: early Romano-British. [ID 135]

- 34 Possible Hod Hill type brooch, eroded. The bow is very slightly curved in the middle and has an angle at the head. It is decorated with cast cross ribs. The catch plate is largely missing. The hinged pin is lost. Cu alloy. L 39 mm; W 16 mm. BAAMP00, ctx 1004, SF 682. Unph. [ID 111]

The bow is quite narrow, but its profile with angled head confirms its affinities.

35 Two-piece brooch, of uncertain form, much eroded. The bow is more or less circular in section with a slight medial ridge. Remains of a sprung pin. Second fragment comprises spring and axle pin. Cu alloy. L 36 mm; W 12 mm. BAAMP00, ctx 330042, SF 875. Phase: Romano-British 2nd – 3rd C AD. [ID 122]

36 Colchester one-piece brooch. (Hull Type 90.) The bow is with an oval section, the catch-plate is largely lost. The spring has an outside chord secured by a hook decorated in profile. Cu alloy. L 39 mm; W 19 mm. BAAMP00, ctx 301001, SF 878. Unph. [ID 124]

Compare an example from Colchester (Crummy 1983, 12 & fig. 6, no. 40)

37 Colchester two-piece brooch. (Hull Type 92) Curved bow with medial ridge, and solid catch-plate. The pin is sprung with an external chord, which is secured by a pierced lug. Cu alloy. L 39 mm; W 17 mm. BAAMP00, ctx 349132, SF 533. Phase: early Romano-British. [ID 105]

38 Colchester two-piece brooch. (Hull Type 92) Curved bow with medial ridge, and solid catch-plate. The medial ridge is decorated with fine zig-zag pattern for part of its length. The pin is sprung with an external chord secured by a pierced lug. Cu alloy. L 38 mm; W 17 mm. BAAMP00, ctx 349132, SF 534. Phase: early Romano-British. [ID 106]

39 Colchester two-piece brooch. (Hull Type 92.) Curved bow of flattened oval section, and catch-plate with single triangular cut-out. The pin now lost was sprung with an external chord, which was secured by a pierced lug. Cu alloy. L 44 mm; W 17 mm. BAAMP00, ctx 349132, SF 535. Phase: early Romano-British. [ID 107]

40 Colchester two-piece brooch. (Hull Type 92.) The bow has a medial ridge with a section of fine zigzag pattern. The catchplate has two cut-outs. The sprung pin has an outside chord secured by a pierced lug). Cu alloy. L 62 mm; W 29 mm. BAAMP00, ctx 301001, SF 877. Unph. [ID 123]

41 Colchester two-piece brooch, with largely plain bow. Cu alloy. L 40 mm; W 19 mm. BAAMP00, ctx 301001, SF 833. Unph. [ID 119]

42 Fragments of a probable Colchester two-piece brooch with sprung pin. The bow has a medial ridge with lightly chased cross-hatching. The pin and spring are lost but an external chord can be inferred. Found with two small copper alloy fragments - not part of brooch. Cu alloy. L 45 mm; W 14 mm. BAAMP00, ctx 349147, SF 540. Phase: early Romano-British. [ID 108]

43 Dolphin brooch with hinged pin. The bow is of diamond cross-section. There are three transverse notches across the upper part of the bow. Cu alloy. L 34 mm; W 22 mm. BAAMP00, ctx 330017, SF -. Phase: early Romano-British. [ID 130]

The transverse slots were probably inlaid with coloured enamel. Compare an example from Dragonby (Olivier 1996, 255 & fig. 1.8, no 90)

44 Brooch fragments. Part of body of brooch, much eroded, and three fragments of spring. Was a two-piece brooch, but uncertain type. Cu alloy. L 24 mm; W 13 mm. BAAMP00, ctx 328013, SF 712. Phase: late IA / early Romano-British. [ID 114]

45 Brooch pin with coiled spring and axle. Only half the spring survives, but has nine coils. From a two piece brooch. Cu alloy. L 67 mm. BAAMP00, ctx 301001, SF 922. Unph. [ID 125]

#### *Hair pins*

46 Hairpin with large head with large head flattened on top, and thin tapering stem. Cu alloy. L 59 mm. BAAMP00, ctx 310139, SF -. Phase: early medieval. [ID 92]

No clear parallel can be found for this pin with has a thin stem and large heavy head. Most probably falls within Hamwic Class Aa, with spherical undecorated heads (Hinton and Parsons 1996, 14)

47 Hairpin with domed head, and incomplete stem. Cu alloy. L 24 mm. BAAMP00, ctx 301001, SF 844. Unph. [ID 98]

A Roman hairpin that falls within Cool's group 1 (knobbed heads) (Cool 1990, 151-4 & fig.1).

## *Bracelets*

### Early broad flat bracelets

- 48 Bracelet fragment. Flat broad strip with slight decoration down the centre. Cu alloy. L 22 mm; W 17 mm. BAAMP00, ctx 301001, SF 1005. Unph. [ID 74]
- 49 Bracelet fragment formed from broad flat strip. The outer edges are defined by fine plain beading. There are two parallel beaded lines running along the centre of the band. The terminal is apparently undecorated. Cu alloy. L 47 mm; W 22 mm. BAAMP00, ctx 301001, SF 1030. Unph. [ID 128]

Broad flat bracelets are an early form. See the examples from Colchester (Crummy 1983, 37 & fig. 40, nos 1586-87) and Baldock (Stead 1986b, 125 & fig.52, nos 163-66: no.164 is from a Neronian context).

### Cable pattern bracelets

- 50 Bracelet of cable/rope pattern, formed from two strands of wire twisted together. Cu alloy. D 38 mm. BAAMP00, ctx 348016, SF 504. Phase: late Romano-British. [ID 101]
- 51 Probable bracelet fragment, comprising three strands of wire twisted together to form a cable pattern bracelet. Cu alloy. L 81 mm. BAAMP00, ctx 6606, SF 995. Phase: late Romano-British. [ID 127]
- 52 Possible bracelet fragment, comprising length of wire of flattened section, originally twisted but now partially untwisted. Cu alloy. L 69 mm. BAAMP00, ctx 333050, SF 510. Phase: late Romano-British. [ID 103]

The rope, or cable, pattern bracelet was a common later Roman form. See examples from Colchester (Crummy 1983, 38 & fig. 41, nos 1611, 1613, 1628 & 1633) and from South Shields (Allason-Jones and Miket 1984, 134-6, nos 3.267-3.277).

### Miscellaneous bracelets

- 53 Bracelet fragment, of half round section. One end is broadened and flattened with a slight groove down the centre. Encrusted. Cu alloy. L 43 mm. BAAMP00, ctx 301001, SF 853. Unph. [ID 121]
- 54 Bracelet, formed from strip decorated with ring and dot motifs. Cu alloy. D 40 mm. BAAMP00, ctx 1004, SF 677. Unph. [ID 110]

Compare complete bracelet with hooked terminals and decorated with ring and dot motifs from Kingscote, Gloucestershire found in fieldwalking (Viner, 1998, 208 & fig. 100, no. 1.22)

- 55 Bracelet fragment, comprising terminal with two ring and dot motifs. The rest of the band has a central groove and notched edges. Cu alloy. L 34 mm. BAAMP00, ctx 301001, SF 768. U/S. [ID 117]

Compare examples from Kingscote, Gloucestershire found in fieldwalking (Viner, 1998, 208 & fig. 100, no. 1.21) and from Aldborough (Bishop 1996, 49 & fig.29, no.293).

- 56 Bracelet fragment, with raised opposed chevron motifs. Cu alloy. L 23 mm. BAAMP00, ctx 301001, SF 797. U/S. [ID 118]

A bracelet with raised chevron or zig-zag pattern was found at Baldock (Stead 1986b, 125 & fig.53, nos. 174) in a late context.

- 57 Bracelet with narrow band of oval section, with transverse grooving. At intervals there are thicker sections, or applied collars. Cu alloy. D 52 mm. BAAMP00, ctx 301001, SF 985. U/S. [ID 126]

Compare examples from Kingscote, Gloucestershire (Viner 1998, 154 & fig. 75, nos 1.303-1.305). They are from late contexts dating to 3rd and 4th centuries.

- 58 Bracelet with thin band of oval section. A variant of the crenellated bracelet form. Cu alloy. L 46 mm. BAAMP00, ctx 301001, SF 1061. U/S. [ID 129]

### *Possible Finger Ring*

- 59 Possible finger ring of oval section. Cu alloy. D 26 mm. BAAMP00, ctx 301001, SF 1091. U/S. [ID 132]

Comparable to rings, which are interpreted as votive offerings, have been recovered in some numbers from a suggested shrine at a site at Kings Meadow, Higham Ferrers, Northamptonshire (report in preparation).

### *Toilet Items*

- 60 Small tweezers formed from plain narrow strip and with slightly pointed tips. Cu alloy. L 45 mm. BAAMP00, ctx 1007, SF 692. Unph. [ID 112]

### **Security, including locks, keys and chains**

- 61 Latchlifter formed from rectangular section strip. The handle is broader and terminates in a loop. Fe. L 178 mm. BAAMP00, ctx 306031, SF 808. Phase: late Romano-British. [ID 157]
- 62 Barb spring padlock key handle, comprising tapering strip rolled into a suspension loop at the narrow end. At the broad end the strip is broken but there is evidence that the handle was bent to form the bit and for a cut out in the bit. Fe. L 109 mm. BAAMP00, ctx 365032, SF 550. Phase: late Romano-British. [ID 4]
- 63 Not illustrated, Similar to No. 62. Barb spring padlock key handle, with a tapering flat rectangular section stem. The narrower end is rolled into a loop. The wider end was originally bent and formed into the bit, now missing. Traces of cut-outs in bit survive. Fe. L 145 mm. BAAMP00, ctx 301001, SF 942. U/S. [ID 55]
- 64 Barb spring padlock bolt fragment. The two barb springs have are now detached from the square section bolt stem fragment. Much of the bolt is missing, so that it not possible to determine how the padlock and bolt were secured. Fe. L 60 mm. BAAMP00, ctx 301001 SF 681. Unph. [ID 163]
- 65 Lever lock key, with large rectangular bit. The stem of the key is hollow at the outer end, and has a circular bow with a small knob opposite the stem. The bit has at least three slots or clefts. In profile the bit is not flat but shaped to form bullets. Fe. L 91 mm. BAAMP00, ctx 301001, SF 969. U/S [ID 162]
- 66 Chain of eight irregular and worn figure-of-eight or S-shaped links. One link is incomplete. The links vary in size: from 14 mm to 17 mm; most are *c.* 15 mm long. Cu alloy. L 96 mm. BAAMP00, ctx 331005, SF 506. Phase: late Romano-British. [ID 102]

### **Structural fittings**

The bulk of structural fittings comprise nails, which have been tabulated in Appendix 2.

- 67 Ring and looped bar. The bar appears twisted. Fe. L 135 mm. D of ring 57 mm x 55 mm. BAAMP00, ctx 355066, SF -. Phase: late Romano-British. [ID 257]

### **Objects of uncertain function**

- 68 Possible handle formed from square section rod, expanded at one end, which is broken. Fe. L 62 mm. BAAMP00, ctx 329027, SF -. Phase: late Romano-British. [ID 413]
- 69 Not illustrated. Object comprising thick circular head and stem of square section. The top of the head has a raised triangular section. Function uncertain. Fe. L 112 mm. BAAMP00, ctx 348007, SF 965. Phase: late Romano-British. [ID 189]
- 70 Object comprising strip of rectangular section, rounded at one end and pierced with a nail hole, the other end is formed into a handle or tang, incomplete. Fe. L 159 mm. BAAMP00, ctx 306066, SF 557. Phase: late Romano-British. [ID 158]

- 71 Tapering rod of circular section. At the wider end the object thins sharply to a square section, perhaps a tang, now missing? Fe. L 208 mm. BAAMP00, ctx 306066, SF -. Phase: late Romano-British. [ID 294]
- 72 Object formed from bar bent at a right angle, with one end flattened and broad to a blade like edge. Function uncertain. Fe. L 34 mm; W 31 mm. BAAMP00, ctx 336048, SF -. Phase: late Romano-British. [ID 154]
- 73 Ring or collar, plain and of triangular section. Cu alloy. D 14 mm x 16 mm. BAAMP00, ctx 310139, SF -. Phase: early medieval. [ID 77]
- 74 Small domed fitting, with tiny knob at crest. Tinned. Function uncertain. Cu alloy. D 10 mm. BAAMP00, ctx 310135, SF -. Phase: early medieval. [ID 91]
- 75 Not illustrated. Strip handle with looped terminal. Possibly a looped handle from a key. Fe. L 51 mm. BAAMP00, ctx 1000, SF -. Unph. [ID 224]

**The LBR and M11 sites (BAALB00 and BAALR00).**

The objects from the LBR site are all iron. Five pieces are miscellaneous fragments of wire, strip and rod, there is one possible structural fragment (a possible broken clamp, but more probably a fragment of strip), a single nail and a latchlifter (Cat. No.74). The material from the M11 site comprises five miscellaneous fragments, four nails and a piece of rod formed into a loop at one end.

- 76 Latchlifter, formed from rod of circular section, with flat rectangular section handle with looped terminal. Fe. L 277 mm. BAALB00, ctx 204005, SF 584. Phase: Romano-British 2nd – 3rd C AD. [ID 622]

Table 14.1: Overall numbers of metal objects by site and phase

Site Code	Phase															Totals
	MBA	EIA	MIA	LIA	LIA/ERB	ERB	RB 2-3c	LRB	RB	Late Saxon	EM	M	PM	Unph	U/S	
BAACP 00	3		16		50	16	25	77					1	24		212
BAAMP 00	3				3	56	15	463	1	6	26	15	2	65	107	762
BAAMP 99					2	3	2	142		1	1		1	9	1	162
BAALB 00						1	8									9
BAALR 00		1		4	4									2		11
<b>Totals</b>	<b>6</b>	<b>1</b>	<b>16</b>	<b>4</b>	<b>59</b>	<b>76</b>	<b>50</b>	<b>682</b>	<b>1</b>	<b>7</b>	<b>27</b>	<b>15</b>	<b>4</b>	<b>99</b>	<b>108</b>	<b>1156</b>

Table 14.2: LTCP site - Summary quantification of metal finds by phase and function

Phase	Function														Totals
	Arms	Tools	Transport	Household	Personal	Security	Structural	Bindings	Nails	Misc	Query	Industrial	Unk		
MBA									3						3
MIA														16	16
LIA/ERB					6				8	21	1	1	13	50	
ERB					4		1		6	5				16	
RB 2-3c		1			2		1		11	8			2	25	
LRB	1			1	44	1		2	24	4				77	
PM			1											1	
unph		1			9				3				11	24	
<b>Totals</b>	<b>1</b>	<b>2</b>	<b>1</b>	<b>1</b>	<b>65</b>	<b>1</b>	<b>2</b>	<b>2</b>	<b>55</b>	<b>38</b>	<b>1</b>	<b>1</b>	<b>42</b>	<b>212</b>	



Table 14.3: LTCP site: summary quantification of metal finds by phase, context and function

Phase	Context	Function													Totals		
		Arms	Tools	Transport	Household	Personal	Security	Structural	Bindings	Nails	Misc	Query	Industrial	Unk			
MBA	115002										3						3
	<i>Sub Total</i>										3						3
MIA	128004															10	10
	128005															6	6
	<i>Sub Total</i>															16	16
LIA/ERB	110003					1											1
	110013					1											1
	110079												1				1
	113075									2							2
	125086					1											1
	129031									1							1
	129057											1					1
	136082					1											1
	136089									1							1
	136138										1						1
	138041					1											1
	139015										1						1
	140010										1						1
	151005									3	9					13	25
	151006										1						1
	151007										4						4
	151025										2						2
	151028					1											1
	156024									1	1						2
	157008										1						1
	<i>Sub Total</i>					6				8	21	1	1		13		50
ERB	110075								1								1

Phase	Context	Function													Totals
		Arms	Tools	Transport	Household	Personal	Security	Structural	Bindings	Nails	Misc	Query	Industrial	Unk	
ERB	112052										1				1
	121028									2					2
	121126					1									1
	129032					1				1	3				5
	136013									1					1
	139019					1									1
	139042									1					1
	143032										1				1
	143063					1									1
	147023									1					1
<i>Sub Total</i>						4		1		6	5				16
RB 2-3c	129025					2		1		1					4
	138026									2					2
	138027									5	7				12
	138028		1							3	1			2	7
<i>Sub Total</i>			1			2		1		11	8			2	25
LRB	109045										1				1
	114038	1													1
	115022					6				2	1				9
	115023				1	4				1	1				7
	121016									2					2
	129017									5					5
	134025					26									26
	134026					5									5
	136003									1	1				2
	136055									1					1
	138021									8					8
	140024					3			2	4					9
	143005							1							1

Phase	Context	Function													Totals
		Arms	Tools	Transport	Household	Personal	Security	Structural	Bindings	Nails	Misc	Query	Industrial	Unk	
	<i>Sub Total</i>	<i>1</i>			<i>1</i>	<i>44</i>	<i>1</i>		<i>2</i>	<i>24</i>	<i>4</i>				<i>77</i>
<b>PM</b>	<b>114043</b>			<i>1</i>											<b>1</b>
	<i>Sub Total</i>			<i>1</i>											<i>1</i>
<b>Unph</b>	<b>107056</b>					<i>9</i>				<i>3</i>				<i>11</i>	<b>23</b>
	<b>915006</b>		<i>1</i>												<b>1</b>
	<i>Sub Total</i>		<i>1</i>			<i>9</i>				<i>3</i>				<i>11</i>	<i>24</i>
	<b>Totals</b>	<b>1</b>	<b>2</b>	<b>1</b>	<b>1</b>	<b>65</b>	<b>1</b>	<b>2</b>	<b>2</b>	<b>55</b>	<b>38</b>	<b>1</b>	<b>1</b>	<b>42</b>	<b>212</b>

Table 14.4: MTCP site: summary quantification of metal finds by phase and function

Phase	Function														Totals
	Arms	Tools	Transport	Household	Personal	Measure	Security	Structural	Bindings	Nails	Misc	Query	Industrial	Unknown	
<b>MBA</b>				1	1					1					<b>3</b>
<b>LIA/ERB</b>					2				1	2					<b>5</b>
<b>ERB</b>		1			15					12	2	1		28	<b>59</b>
<b>RB 2-3c</b>					4			2		5	4			2	<b>17</b>
<b>LRB</b>	1	1	3	4	179	1	4	5	5	285	57	11	25	24	<b>605</b>
<b>RB</b>					1										<b>1</b>
<b>Late Saxon</b>				1	1					1				4	<b>7</b>
<b>EM</b>		1	5	3	4			1		7	2	4			<b>27</b>
<b>M</b>										11	1			3	<b>15</b>
<b>PM</b>											2	1			<b>3</b>
<b>unph</b>			1	2	6		1	4		43	13	2		2	<b>74</b>
<b>U/S</b>	1	6	4	9	22	1	2	6	5	6	29	17			<b>108</b>
<b>Totals</b>	<b>2</b>	<b>9</b>	<b>13</b>	<b>20</b>	<b>235</b>	<b>2</b>	<b>7</b>	<b>18</b>	<b>11</b>	<b>373</b>	<b>110</b>	<b>36</b>	<b>25</b>	<b>63</b>	<b>924</b>

Table 14.5: MTCP site: hobnails

Phase	Context	Hobnails
<b>middle BA</b>	314067	1
<i>Sub Total</i>		<i>1</i>
<b>early RB</b>	349147	5
	351004	1
<i>Sub Total</i>		<b>6</b>
<b>RB 2-3 C</b>	328268	2
<i>Sub Total</i>		<b>2</b>
<b>late RB</b>	2305	12
	2311	1
	6604	52
	6606	3
	6609	3
	6617	1
	6619	1
	319125	24
	319139	1
	319175	7
	319178	1
	319200	1
	330088	4
	333003	1
	334016	2
	335017	4
	335022	23
	335028	1
	347029	1
	348016	28
352003	1	
356060	2	
<i>Sub Total</i>		<b>174</b>
<b>RB</b>	349154	1
<i>Sub Total</i>		<b>1</b>
<b>early Medieval</b>	337015	1
<i>Sub Total</i>		<b>1</b>
<b>Unphased</b>	342085	1
<i>Sub Total</i>		<b>1</b>
<b>Grand Total</b>		<b>186</b>

Table 14.6: MTCP site: summary quantification of metal finds by phase, context and function

Phase	Context	Function													Totals	
		Arms	Tools	Transport	Household	Personal	Measure	Security	Structural	Bindings	Nails	Misc	Query	Industrial		Unknown
MBA	307032										1					
	314067				1	1										
<i>Sub Total</i>					1	1					1					
LIA/ERB	1909										2					
	328013					2										
	360021									1						
<i>Sub Total</i>						2				1	2					
ERB	6323										1				1	2
	7204		1													1
	309155											1				1
	319303										1					1
	320084										1					1
	328009														2	2
	328015					1										1
	328037					1									4	5
	330007					2						1				3
	330017					1										1
	330019												1			1
	330146										1				2	3
	332021										2				17	19
	349042										1					1
	349132						3									3
	349133														1	1
	349147						6				5					11
349154														1	1	
351004						1									1	
<i>Sub Total</i>			1			15				12	2	1		28	59	

Phase	Context	Function														Totals
		Arms	Tools	Transport	Household	Personal	Measure	Security	Structural	Bindings	Nails	Misc	Query	Industrial	Unknown	
RB 2-3c	6319											1				1
	6335										1					1
RB 2-3c	319309								1							1
	325028											1				1
	328268					3			1		4					8
	330042					1										1
	330051														2	2
	333054											1				1
	347116											1				1
<b>Sub Total</b>						4			2		5	4			2	17
LRB	1608							1	1		2					4
	1707										2					2
	2305					13					3					16
	2311					1					5	1				7
	6309										1					1
	6505										3					3
	6509										2		1			3
	6604					52					3					55
	6606					4	1				9	6		3	2	25
	6608										1					1
	6609					3					10				2	15
	6611										1					1
	6617					1					7					8
	6619					1										1
	6621										1	1				2
	306026										6					6
	306031								1		3	1				5
306037											1				1	
306056											2				2	

Phase	Context	Function														Totals
		Arms	Tools	Transport	Household	Personal	Measure	Security	Structural	Bindings	Nails	Misc	Query	Industrial	Unknown	
LRB	306066									1	4		2			7
	314143										1					1
	315076				1						2					3
	315087										1					1
	315090										1					1
	315111										2		1			3
	316061										2					2
	319125					24				1						25
	319139					1										1
	319150											1				1
	319158											1				1
	319167												1			1
	319175					7										7
	319178					1						1				2
	319200					1										1
	319234											2				2
	319238											2				2
	320013												1			1
	320072											1				1
	321210											2				2
	321227											1				1
	321232											4				4
	321233											1				1
	321234											1				1
	321239												1			1
	323049											2				2
	324001												1			1
	325027											1				1
	326045											1				1



Phase	Context	Function														Totals	
		Arms	Tools	Transport	Household	Personal	Measure	Security	Structural	Bindings	Nails	Misc	Query	Industrial	Unknown		
LRB	326046										1						1
	326054										4						4
	326062			1							2						3
	327014										1				1		2
	328152										1						1
	328167										5				7		12
	328180										2						2
	328194										2						2
	328221											1					1
	328256										2						2
	328279					1											1
	328292														6		6
	328293											1					1
	328297														1		1
	329027	1											1				2
	329032										1						1
	330065										1						1
	330084		1														1
	330088						4				3	1	1				9
	330096										1						1
	330100										2					2	4
	330108										4	1					5
	330116										1						1
	330120										1						1
	330136									1							1
	330148										1						1
	331005					1											1
	332024										1						1
	333003						1				5		1				7

Phase	Context	Function														Totals
		Arms	Tools	Transport	Household	Personal	Measure	Security	Structural	Bindings	Nails	Misc	Query	Industrial	Unknown	
LRB	333023											2				2
	333026										3	3	1			7
	333038										1					1
	333050					1							1			2
	333052									1	7	9		19		36
	334006										1					1
	334009										1					1
	334011											1				1
	334012											3		2		5
	334014											2				2
	334015											2	1			3
	334016						2					39				41
	334018												1			1
	334023											1				1
	334031											8				8
	334034											1	1			2
	334036											3				3
	335005												1			1
	335017						4			1		1	2			8
	335022						23					1	1			25
	335028						1									1
	336006											1				1
	336048											3		1		4
	336064				1											1
	336074														1	1
	337018											1				1
	338008												1			1
	338015						1					1				2
	345050														1	1

Phase	Context	Function														Totals
		Arms	Tools	Transport	Household	Personal	Measure	Security	Structural	Bindings	Nails	Misc	Query	Industrial	Unknown	
LRB	347015											1				1
	347029					1										1
	347034			1												1
	347049										2					2
	348007												1			1
	348016					29					2					31
	349035										1					1
	349169											1				1
	350023										2					2
	350030										1					1
	350032											2				2
	350061				1				1		2	1				5
	351007										1					1
	352003						1				3	1			2	7
	353009				1						2					3
	354010										1					1
	355005										1					1
	355033										1					1
	355057										1					1
	355066									1						1
	355078											1				1
	355081											1				1
	355122											1				1
	356002										1					1
	356004										1					1
	356060						2				1					3
	356061										3					3
	356079											2				2
	358007										1					1

Phase	Context	Function														Totals
		Arms	Tools	Transport	Household	Personal	Measure	Security	Structural	Bindings	Nails	Misc	Query	Industrial	Unknown	
	359025										41					41
	359026										3					3
	359033										2					2
	362033									1						1
	365003										1					1
	365032							1			1					2
<b>Sub Total</b>		1	1	3	5	179	1	3	5	5	285	57	11	25	24	605
<b>RB</b>	349154					1										1
<b>Sub Total</b>						1										1
<b>L Saxon</b>	<b>1106</b>										1					1
	307015					1										1
	317002				1											1
<b>L Saxon</b>	<b>323014</b>														1	1
	340006														3	3
<b>Sub Total</b>					1	1					1				4	7
<b>EM</b>	<b>920</b>			1												1
	310128										2					2
	310135			3	1						1		1			6
	310139				1	3					1	1	1			7
	336004										1					1
	337015					1										1
	354064		1													1
	354074								1							1
	356091			1								1				2
	356103												2			2
	357027										1					1
	357057				1											1
	357070										1					1
<b>Sub Total</b>			1	5	3	4			1		7	2	4			27

Phase	Context	Function														Totals
		Arms	Tools	Transport	Household	Personal	Measure	Security	Structural	Bindings	Nails	Misc	Query	Industrial	Unknown	
Med	354047										5					5
	354048										1					1
	354055										1					1
	354059										4				3	7
	354061											1				1
<i>Sub Total</i>											11	1			3	15
PM	8713												1			1
	333044											2				2
<i>Sub Total</i>												2	1			3
unph	0							1			4					5
	525														1	1
unph	1000				1				2		20	6	1			30
	1004					2										2
	1005												1			1
	1006				1	1						1				3
	1007					1					5	1				7
	6207								1							1
	6238										1					1
	6333								1		3					4
	6607											2				2
	301002					1						1				2
	310144										1					1
	317010											1				1
	320146										2					2
	324021										1					1
	330207			1												1
	335009										2	1			1	4
342085						1									1	
343128										1					1	

Phase	Context	Function														Totals
		Arms	Tools	Transport	Household	Personal	Measure	Security	Structural	Bindings	Nails	Misc	Query	Industrial	Unknown	
	395025										3					3
<i>Sub Total</i>				1	2	6		1	4		43	13	2		2	74
U/S	0										1					1
	301001	1	6	4	9	22	1	2	6	5	5	29	17			107
<i>Sub Total</i>		1	6	4	9	22	1	2	6	5	6	29	17			108
<b>Totals</b>		<b>2</b>	<b>9</b>	<b>13</b>	<b>21</b>	<b>235</b>	<b>2</b>	<b>6</b>	<b>18</b>	<b>11</b>	<b>373</b>	<b>110</b>	<b>36</b>	<b>25</b>	<b>63</b>	<b>924</b>

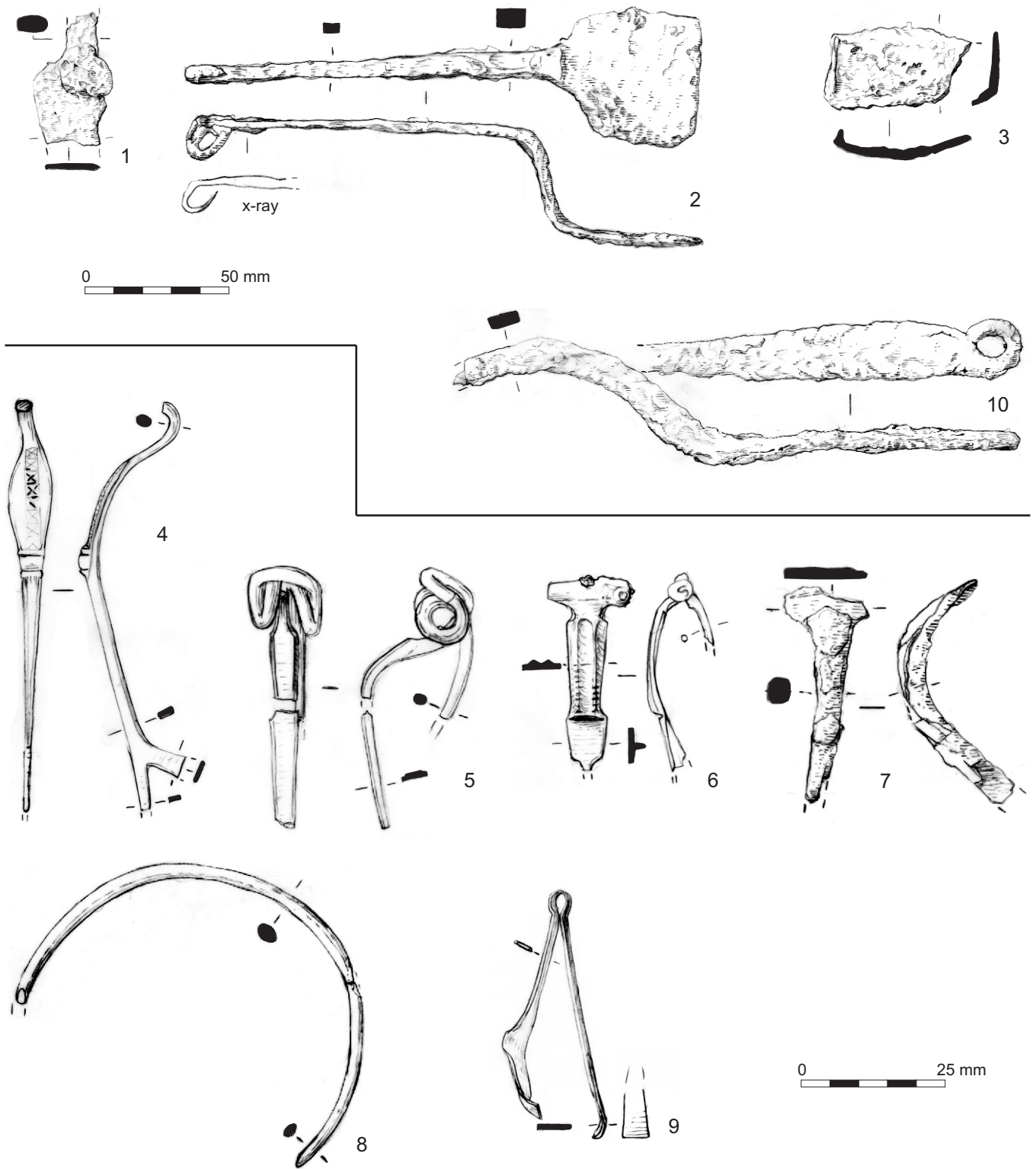
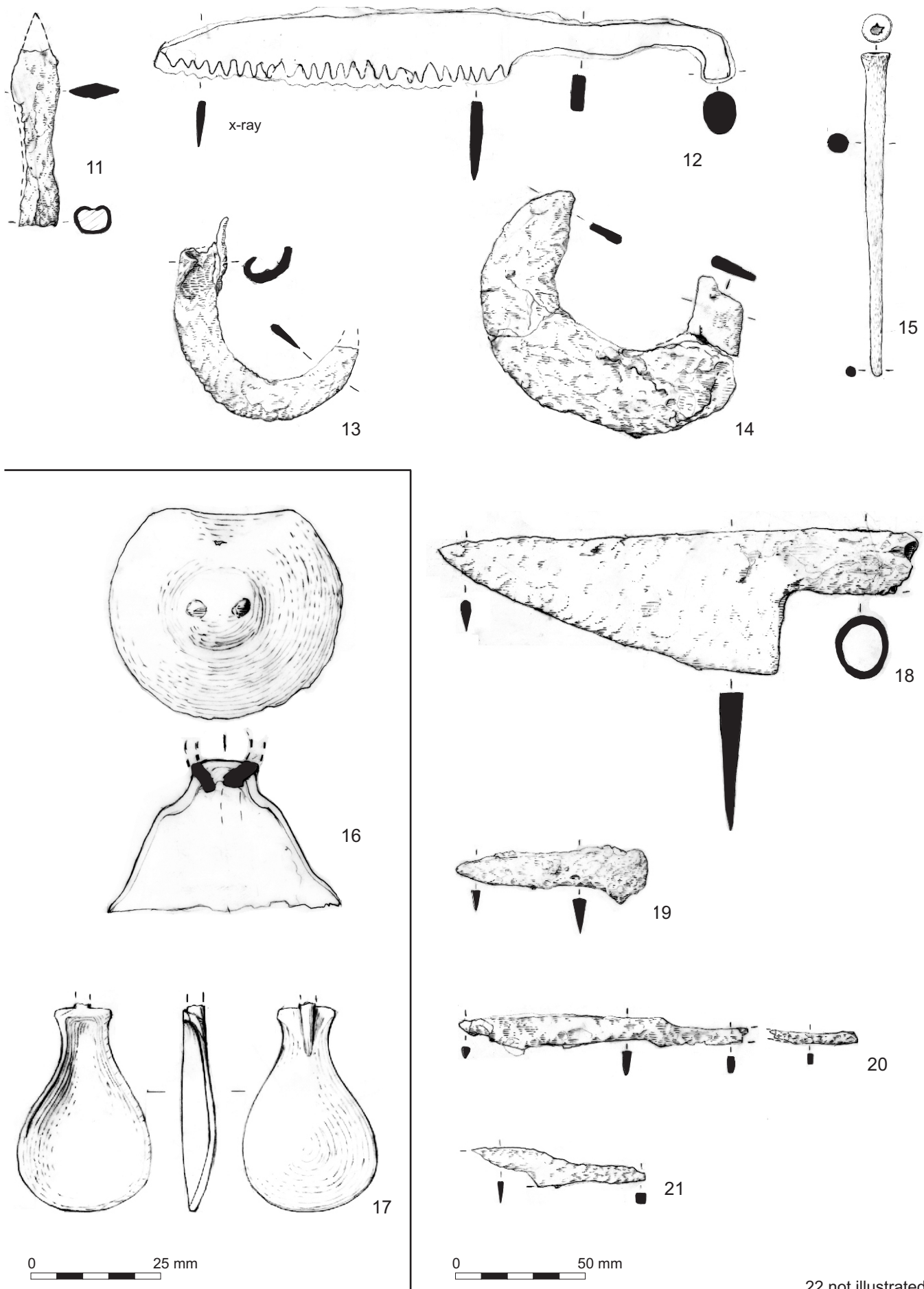


Figure 14.1: Selected metalwork (details in the catalogue)



22 not illustrated

Figure 14.2: Selected metalwork (details in the catalogue)



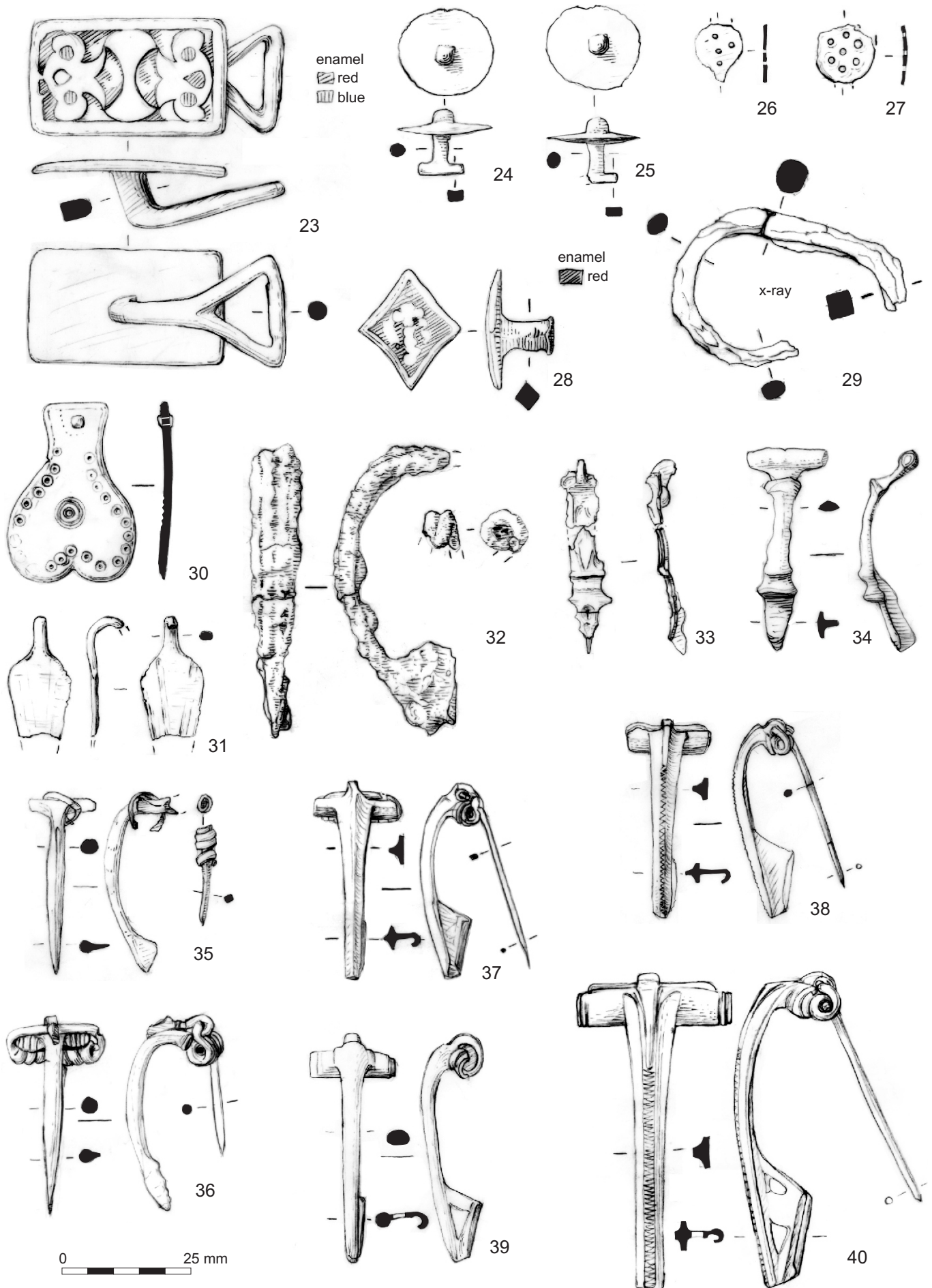


Figure 14.3: Selected metalwork (details in the catalogue)

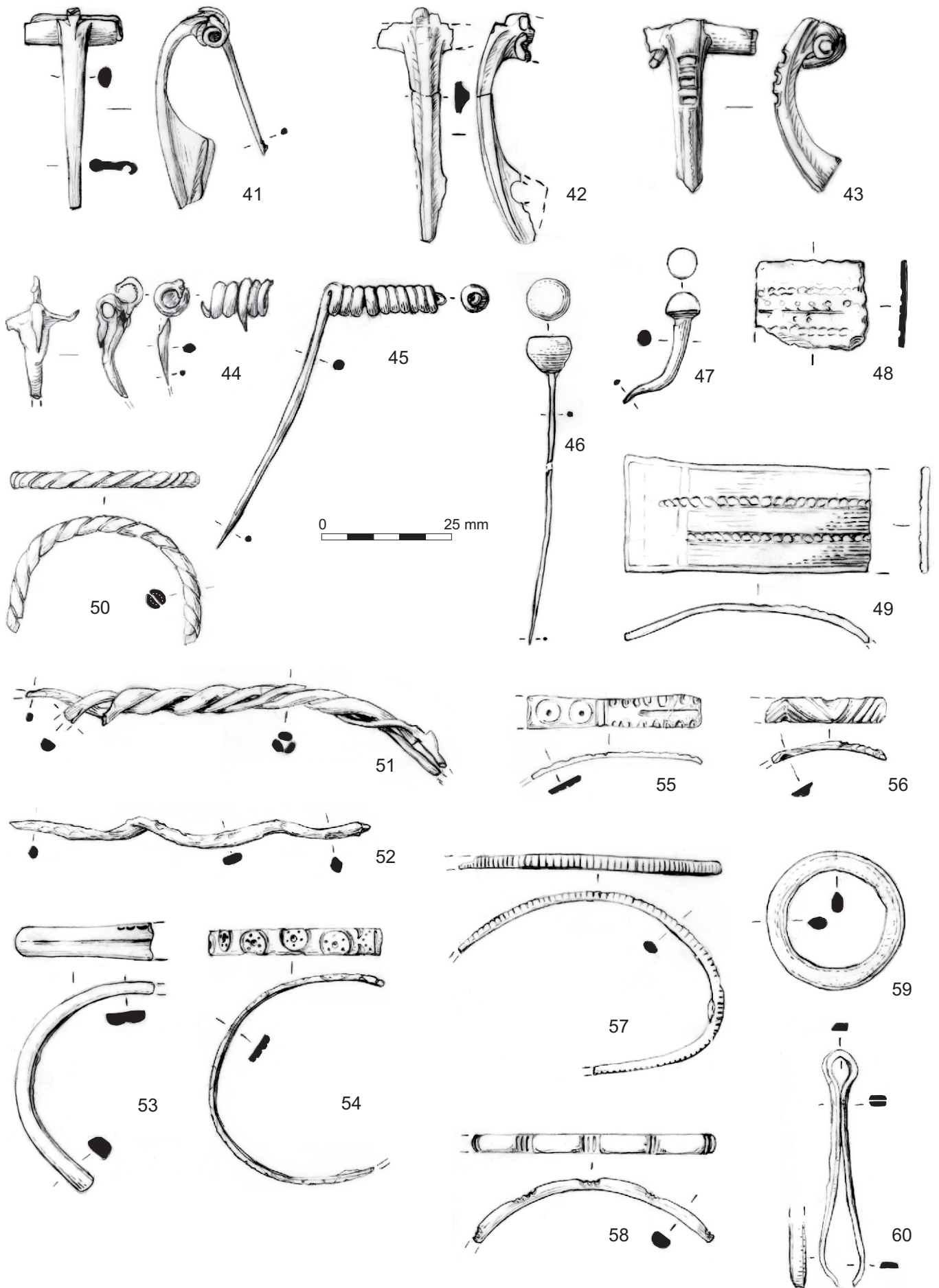
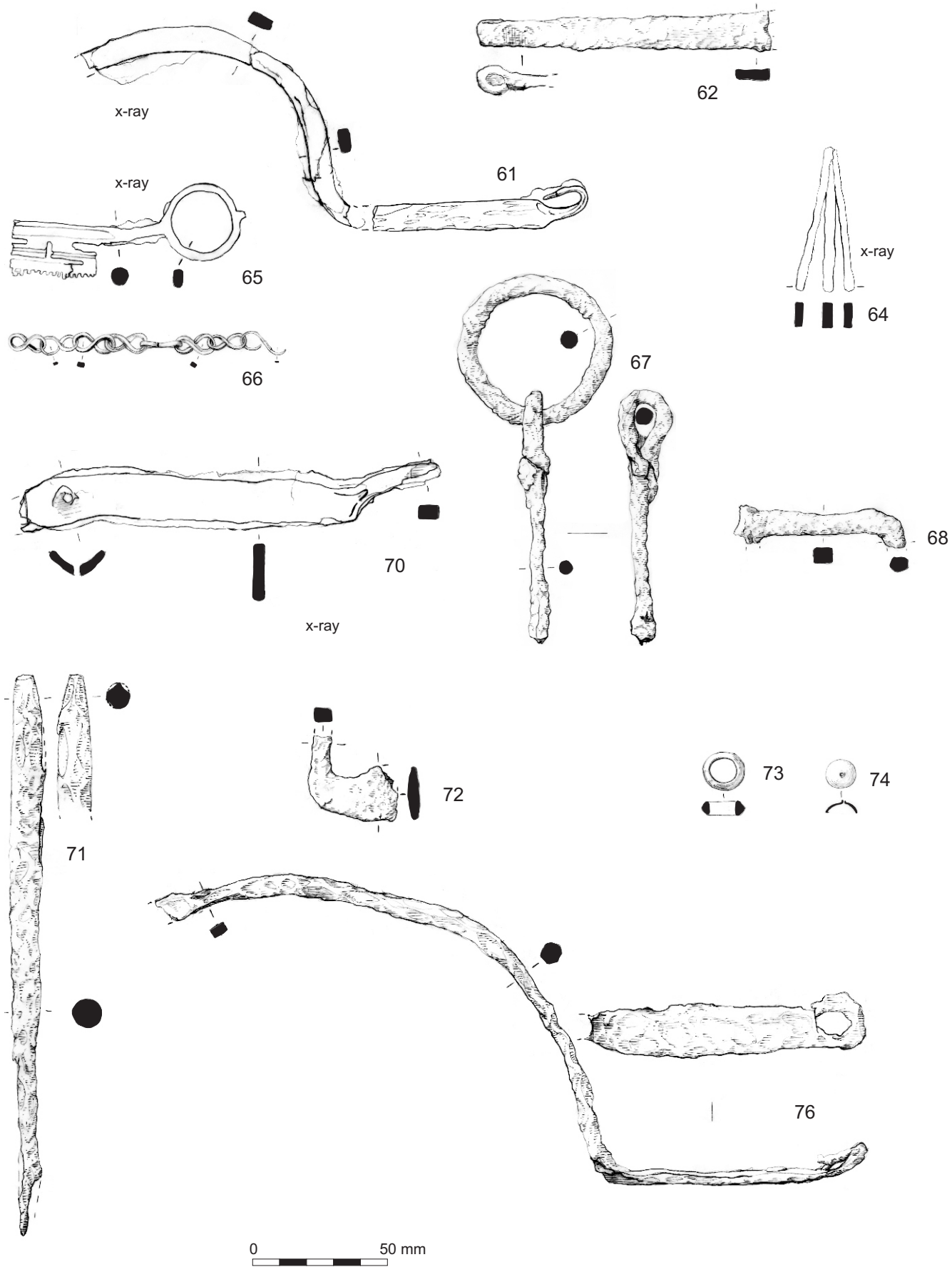


Figure 14.4: Selected metalwork (details in the catalogue)



63, 69 and 75 not illustrated

Figure 14.5: Selected metalwork (details in the catalogue)



*Framework  
Archaeology*

**BAA** Stansted London 