

GEOPHYSICAL SURVEY REPORT

STRATASCAN™



Project name:

Land at Williams Grand Prix Holdings Plc, Grove, Oxfordshire

Client:

Oxford Archaeology

September 2015

Job ref:

J8818

Report author:

Thomas Richardson MSc ACIfA

GEOPHYSICAL SURVEY REPORT

Project name:

Land at Williams Grand Prix Holdings Plc, Grove, Oxfordshire

Client:

Oxford Archaeology



Job ref:

J8818

Field team:

Stephen Weston BA (Hons)

Rebecca Davies BSc (Hons)

Suzanne Reeves BSc (Hons)

Techniques:

**Detailed magnetic survey –
Gradiometry**

Project manager:

Simon Haddrell BEng(Hons) AMBCS PCIfA

Survey date:

16th-17th September 2015

Report written By:

Thomas Richardson MSc ACIfA

Site centred at:

SU 406 910

CAD illustrations by:

Thomas Richardson MSc ACIfA

Post code:

OX12 0DQ

Checked by:

David Elks MSc ACIfA

TABLE OF CONTENTS

LIST OF FIGURES.....	2
1 SUMMARY OF RESULTS	3
2 INTRODUCTION	3
2.1 Background synopsis.....	3
2.2 Site location	3
2.3 Description of site	3
2.4 Geology and soils	3
2.5 Site history and archaeological potential	3
2.6 Survey objectives	4
2.7 Survey methods	4
2.8 Processing, presentation and interpretation of results.....	5
2.8.1 Processing	5
2.8.2 Presentation of results and interpretation.....	5
3 RESULTS.....	5
3.1 Probable Archaeology.....	5
3.2 Possible Archaeology	5
3.3 Medieval/Post-Medieval Agriculture.....	6
3.4 Other Anomalies	6
4 DATA APPRAISAL & CONFIDENCE ASSESSMENT.....	6
5 CONCLUSION	7
6 REFERENCES	8
APPENDIX A – METHODOLOGY & SURVEY EQUIPMENT	9
APPENDIX B – BASIC PRINCIPLES OF MAGNETIC SURVEY	10
APPENDIX C – GLOSSARY OF MAGNETIC ANOMALIES.....	11

LIST OF FIGURES

Figure 01	1:1000	Site location, survey area & referencing
Figure 02	1:1000	Colour plot of gradiometer data showing extreme values
Figure 03	1:1000	Plot of minimally processed gradiometer data
Figure 04	1:1000	Abstraction and interpretation of gradiometer anomalies

1 SUMMARY OF RESULTS

A detailed gradiometry survey was conducted over approximately 7.7 hectares of grassland. The survey has not identified any anomalies of archaeological origin. Areas of modern ploughing and a former field boundary suggest a recent agricultural past for the site. The remaining anomalies are natural or modern, relating to underground services, ferrous objects, and fencing.

2 INTRODUCTION

2.1 Background synopsis

Stratascan were commissioned to undertake a geophysical survey of an area outlined for development. This survey forms part of an archaeological investigation being undertaken by Oxford Archaeology.

2.2 Site location

The site is located to the west of the A338, Grove, Oxfordshire at OS ref. SU 406 910.

2.3 Description of site

The survey area is approximately 9.1 hectares, however areas of buildings and overgrown vegetation reduced the surveyable area to approximately 7.7 hectares of generally flat grassland.

2.4 Geology and soils

The underlying geology is Gault Formation – Mudstone (British Geological Survey website). The drift geology is Northmoor Sand and Gravel Member, Upper Facet – Sand and Gravel across the east of the site, Northmoor Sand and Gravel Member, Lower Facet – Sand and Gravel across the centre of the site, and Alluvium – Clay, Silt, Sand and Gravel across the west (British Geological Survey website).

The overlying soils are known as Grove, which are typical gleyic brown calcareous earths. These consist of fine loamy calcareous soils over chalky gravel (Soil Survey of England and Wales, Sheet 6 South East England).

2.5 Site history and archaeological potential

Extract from 'Land at Williams Grand Prix Holdings Plc, Grove, Oxfordshire Archaeological Desk-Based Assessment' (Oxford Archaeology 2015):

There is, on current understanding, no indication that the Site contains significant archaeological deposits likely to prevent or seriously constrain the development of the Site. The Site does contain known archaeology, in the form of two undated (but presumably pre

medieval) banks (OA 24a and b), an area of medieval ridge and furrow earthworks (OA 25) and some buildings dating to the 1940s (part of OA 23). The medieval ridge and furrow and 20th century buildings are of no more than local significance. The significance of the undated banks is uncertain without further investigation.

The Site has the good potential to contain later prehistoric archaeological remains. A Middle Bronze Age settlement and field system has been recorded c 140m to the south of the Site, although an evaluation closer to the Site suggested that the remains may be decreasing as they move northwards. The previous excavations to the south have also identified possible Iron Age field boundaries, which may also extend into the Site.

There is a good potential for Roman archaeology to be present within the Site, in particular a continuation of the substantial north-south aligned ditch identified by excavations to the south of the Site, which appears to continue through the far western corner of the Site as bank OA 24a. This bank is undated, but appears to be respected by the ridge and furrow earthworks and is therefore presumably early. Evidence associated with the Roman road which forms the eastern boundary of the Site may also be present along the eastern extent of the Site. Archaeological investigations to the south of the Site have not identified a Roman settlement, although some cremations and an inhumation have been recorded during works c140m to the south.

There is a low potential for significant medieval and post-medieval archaeological remains to be present. The Site was located within the Open Fields of Grove and Tulwick throughout the medieval and post-medieval periods and away from the settlements. With the exception of evidence associated to the farming practises, there is not a high potential for archaeological remains of these periods to be present.

There is some potential for 20th century military archaeology to be present. Aerial photographs appear to show military buildings within the Site in the 1940s and 50s, possibly associated with Grove Airfield. However, the Site was not part of the actual airfield and any peripheral remains are unlikely to be significant.

2.6 Survey objectives

The objective of the survey was to locate any features of possible archaeological origin in order that they may be assessed prior to development.

2.7 Survey methods

This report and all fieldwork have been conducted in accordance with both the English Heritage guidelines outlined in the document: *Geophysical Survey in Archaeological Field Evaluation, 2008* and with the Chartered Institute for Archaeologists document *Standard and Guidance for Archaeological Geophysical Survey*.

Given the potential for prehistoric and Roman activity, detailed magnetic survey (gradiometry) was used as an efficient and effective method of locating archaeological anomalies. More information regarding this technique is included in Appendix A.

2.8 *Processing, presentation and interpretation of results*

2.8.1 *Processing*

Processing is performed using specialist software. This can emphasise various aspects contained within the data but which are often not easily seen in the raw data. Basic processing of the magnetic data involves 'flattening' the background levels with respect to adjacent traverses and adjacent grids. Once the basic processing has flattened the background it is then possible to carry out further processing which may include low pass filtering to reduce 'noise' in the data and hence emphasise the archaeological or man-made anomalies.

The following schedule shows the basic processing carried out on all minimally processed gradiometer data used in this report:

1. *Destripe* (Removes striping effects caused by zero-point discrepancies between different sensors and walking directions)
2. *Destagger* (Removes zigzag effects caused by inconsistent walking speeds on sloping, uneven or overgrown terrain)

2.8.2 *Presentation of results and interpretation*

The presentation of the data for each site involves a print-out of the minimally processed data both as a greyscale plot and a colour plot showing extreme magnetic values. Magnetic anomalies have been identified and plotted onto the 'Abstraction and Interpretation of Anomalies' drawing for the site.

3 **RESULTS**

The detailed magnetic gradiometer survey conducted at Grove has not identified any anomalies that can be characterised as being either of a *probable* or *possible* archaeological origin. The following list of numbered anomalies refers to numerical labels on the interpretation plots.

3.1 *Probable Archaeology*

No probable archaeology has been identified within the survey area.

3.2 *Possible Archaeology*

No possible archaeology has been identified within the survey area.

3.3 *Medieval/Post-Medieval Agriculture*

- 1 A weak positive linear anomaly in the west of the site. This is related to a former field boundary visible on aerial photography.
- 2 Areas of closely spaced, parallel, linear anomalies across the site. These are indicative of modern agricultural activity, such as ploughing.

3.4 *Other Anomalies*

- 3 High amplitude bipolar linear anomalies across the site. These are indicative of modern underground services, such as cables or pipes.
- 4 Large areas of scattered magnetic debris across the east of the site. These are likely related former military buildings visible on aerial photography in the 1940s and 50s.
- 5 Small areas of magnetic variation in the west of the site. These anomalies are likely to be geological or pedological in origin.
- 6 Areas of magnetic disturbance are the result of substantial nearby ferrous metal objects such as fences and underground services. These effects can mask weaker archaeological anomalies, but on this site have not affected a significant proportion of the area.
- 7 A number of magnetic 'spikes' (strong focussed values with associated antipolar response) indicate ferrous metal objects. These are likely to be modern rubbish.

4 DATA APPRAISAL & CONFIDENCE ASSESSMENT

Mudstone geologies and sand and gravel drift geologies can give variable responses to magnetic survey. The high potential for archaeology, and extant earthworks combined with the lack of archaeological anomalies in the data would suggest that the survey has not been completely effective and that weak archaeological anomalies may not be seen. The large areas of scattered magnetic debris from the former military buildings also have potential to mask weak archaeological anomalies.

5 CONCLUSION

The survey has not identified any anomalies of archaeological origin. Given the potential for prehistoric and Roman activity indicated by the desk-based assessment, as well as the extant banks on site, it is possible that the local geology is not creating contrasting anomalies and archaeological features may not be being detected. Scattered magnetic debris from former military buildings may also be contributing to the masking effects. Areas of modern ploughing and a former field boundary suggest a recent agricultural past for the site. The remaining anomalies are modern or natural in origin. The modern anomalies relate to underground services, ferrous objects, and fencing.

6 REFERENCES

British Geological Survey South Sheet, 1977. *Geological Survey Ten Mile Map, South Sheet First Edition (Quaternary)*. Institute of Geological Sciences.

British Geological Survey, 2001. *Geological Survey Ten Mile Map, South Sheet, Fourth Edition (Solid)*. British Geological Society.

British Geological Survey, n.d., *website*:
(<http://www.bgs.ac.uk/opengeoscience/home.html?Accordion1=1#maps>) Geology of Britain viewer.

Chartered Institute For Archaeologists. *Standard and Guidance for Archaeological Geophysical Survey*.
<http://www.archaeologists.net/sites/default/files/nodefiles/Geophysics2010.pdf>

English Heritage, 2008. *Geophysical Survey in Archaeological Field Evaluation*.

Oxford Archaeology, 2015. *Land at Williams Grand Prix Holdings Plc, Grove, Oxfordshire Archaeological Desk-Based Assessment*

Soil Survey of England and Wales, 1983. *Soils of England and Wales, Sheet 6 South East England*.

APPENDIX A – METHODOLOGY & SURVEY EQUIPMENT

Grid locations

The location of the survey grids has been plotted together with the referencing information. Grids were set out using a Leica 705auto Total Station and referenced to suitable topographic features around the perimeter of the site or a Leica Smart Rover RTK GPS.

An RTK GPS (Real-time Kinematic Global Positioning System) can locate a point on the ground to a far greater accuracy than a standard GPS unit. A standard GPS suffers from errors created by satellite orbit errors, clock errors and atmospheric interference, resulting in an accuracy of 5m-10m. An RTK system uses a single base station receiver and a number of mobile units. The base station re-broadcasts the phase of the carrier it measured, and the mobile units compare their own phase measurements with those they received from the base station. A SmartNet RTK GPS uses Ordnance Survey's network of over 100 fixed base stations to give an accuracy of around 0.01m.

Survey equipment and gradiometer configuration

Although the changes in the magnetic field resulting from differing features in the soil are usually weak, changes as small as 0.2 nanoTeslas (nT) in an overall field strength of 48,000nT, can be accurately detected using an appropriate instrument.

The mapping of the anomaly in a systematic manner will allow an estimate of the type of material present beneath the surface. Strong magnetic anomalies will be generated by buried iron-based objects or by kilns or hearths. More subtle anomalies such as pits and ditches can be seen if they contain more humic material which is normally rich in magnetic iron oxides when compared with the subsoil.

To illustrate this point, the cutting and subsequent silting or backfilling of a ditch may result in a larger volume of weakly magnetic material being accumulated in the trench compared to the undisturbed subsoil. A weak magnetic anomaly should therefore appear in plan along the line of the ditch.

The magnetic survey was carried out using a dual sensor Grad601-2 Magnetic Gradiometer manufactured by Bartington Instruments Ltd. The instrument consists of two fluxgates very accurately aligned to nullify the effects of the Earth's magnetic field. Readings relate to the difference in localised magnetic anomalies compared with the general magnetic background. The Grad601-2 consists of two high stability fluxgate gradiometers suspended on a single frame. Each gradiometer has a 1m separation between the sensing elements so enhancing the response to weak anomalies.

Sampling interval

Readings were taken at 0.25m centres along traverses 1m apart. This equates to 3600 sampling points in a full 30m x 30m grid.

Depth of scan and resolution

The Grad 601-2 has a typical depth of penetration of 0.5m to 1.0m, though strongly magnetic objects may be visible at greater depths. The collection of data at 0.25m centres provides an optimum methodology for the task balancing cost and time with resolution.

Data capture

The readings are logged consecutively into the data logger which in turn is daily down-loaded into a portable computer whilst on site. At the end of each site survey, data is transferred to the office for processing and presentation.

APPENDIX B – BASIC PRINCIPLES OF MAGNETIC SURVEY

Detailed magnetic survey can be used to effectively define areas of past human activity by mapping spatial variation and contrast in the magnetic properties of soil, subsoil and bedrock.

Weakly magnetic iron minerals are always present within the soil and areas of enhancement relate to increases in *magnetic susceptibility* and permanently magnetised *thermoremanent* material.

Magnetic susceptibility relates to the induced magnetism of a material when in the presence of a magnetic field. This magnetism can be considered as effectively permanent as it exists within the Earth's magnetic field. Magnetic susceptibility can become enhanced due to burning and complex biological or fermentation processes.

Thermoremanence is a permanent magnetism acquired by iron minerals that, after heating to a specific temperature known as the Curie Point, are effectively demagnetised followed by re-magnetisation by the Earth's magnetic field on cooling. Thermoremanent archaeological features can include hearths and kilns and material such as brick and tile may be magnetised through the same process.

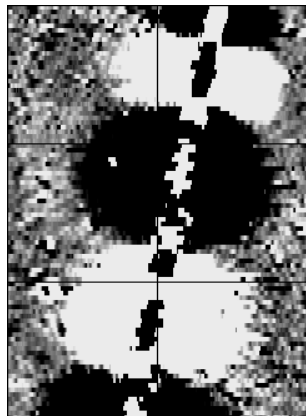
Silting and deliberate infilling of ditches and pits with magnetically enhanced soil creates a relative contrast against the much lower levels of magnetism within the subsoil into which the feature is cut. Systematic mapping of magnetic anomalies will produce linear and discrete areas of enhancement allowing assessment and characterisation of subsurface features. Material such as subsoil and non-magnetic bedrock used to create former earthworks and walls may be mapped as areas of lower enhancement compared to surrounding soils.

Magnetic survey is carried out using a fluxgate gradiometer which is a passive instrument consisting of two sensors mounted vertically 1m apart. The instrument is carried about 30cm above the ground surface and the top sensor measures the Earth's magnetic field whilst the lower sensor measures the same field but is also more affected by any localised buried field. The difference between the two sensors will relate to the strength of a magnetic field created by a buried feature, if no field is present the difference will be close to zero as the magnetic field measured by both sensors will be the same.

Factors affecting the magnetic survey may include soil type, local geology, previous human activity, disturbance from modern services etc.

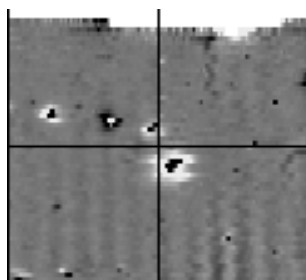
APPENDIX C – GLOSSARY OF MAGNETIC ANOMALIES

Bipolar



A bipolar anomaly is one that is composed of both a positive response and a negative response. It can be made up of any number of positive responses and negative responses. For example a pipeline consisting of alternating positive and negative anomalies is said to be bipolar. See also dipolar which has only one area of each polarity. The interpretation of the anomaly will depend on the magnitude of the magnetic field strength. A weak response may be caused by a clay field drain while a strong response will probably be caused by a metallic service.

Dipolar

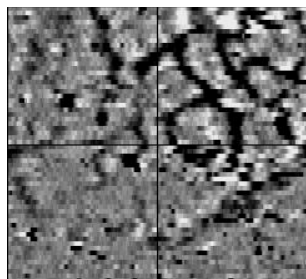


This consists of a single positive anomaly with an associated negative response. There should be no separation between the two polarities of response. These responses will be created by a single feature. The interpretation of the anomaly will depend on the magnitude of the magnetic measurements. A very strong anomaly is likely to be caused by a ferrous object.

Positive anomaly with associated negative response

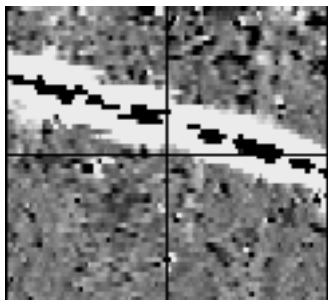
See bipolar and dipolar.

Positive linear



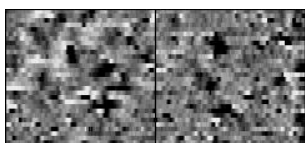
A linear response which is entirely positive in polarity. These are usually related to in-filled cut features where the fill material is magnetically enhanced compared to the surrounding matrix. They can be caused by ditches of an archaeological origin, but also former field boundaries, ploughing activity and some may even have a natural origin.

Positive linear anomaly with associated negative response



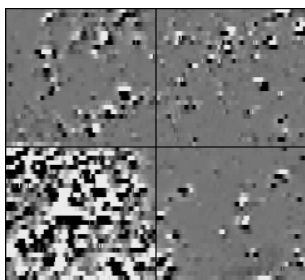
A positive linear anomaly which has a negative anomaly located adjacently. This will be caused by a single feature. In the example shown this is likely to be a single length of wire/cable probably relating to a modern service. Magnetically weaker responses may relate to earthwork style features and field boundaries.

Positive point/area



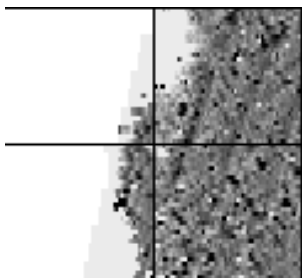
These are generally spatially small responses, perhaps covering just 3 or 4 reading nodes. They are entirely positive in polarity. Similar to positive linear anomalies they are generally caused by in-filled cut features. These include pits of an archaeological origin, possible tree bowls or other naturally occurring depressions in the ground.

Magnetic debris



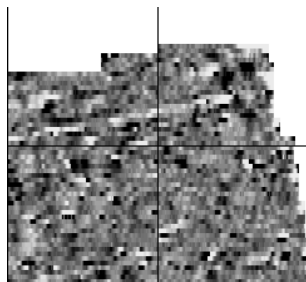
Magnetic debris consists of numerous dipolar responses spread over an area. If the amplitude of response is low ($\pm 3\text{nT}$) then the origin is likely to represent general ground disturbance with no clear cause, it may be related to something as simple as an area of dug or mixed earth. A stronger anomaly ($\pm 250\text{nT}$) is more indicative of a spread of ferrous debris. Moderately strong anomalies may be the result of a spread of thermoremanent material such as bricks or ash.

Magnetic disturbance



Magnetic disturbance is high amplitude and can be composed of either a bipolar anomaly, or a single polarity response. It is essentially associated with magnetic interference from modern ferrous structures such as fencing, vehicles or buildings, and as a result is commonly found around the perimeter of a site near to boundary fences.

Negative linear

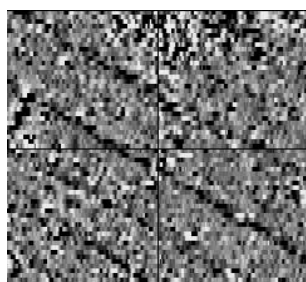


A linear response which is entirely negative in polarity. These are generally caused by earthen banks where material with a lower magnetic magnitude relative to the background top soil is built up. See also ploughing activity.

Negative point/area

Opposite to positive point anomalies these responses may be caused by raised areas or earthen banks. These could be of an archaeological origin or may have a natural origin.

Ploughing activity



Ploughing activity can often be visualised by a series of parallel linear anomalies. These can be of either positive polarity or negative polarity depending on site specifics. It can be difficult to distinguish between ancient ploughing and more modern ploughing. Clues such as the separation of each linear, straightness, strength of response and cross cutting relationships can be used to aid this, although none of these can be guaranteed to differentiate between different phases of activity.

Polarity

Term used to describe the measurement of the magnetic response. An anomaly can have a positive polarity (values above 0nT) and/or a negative polarity (values below 0nT).

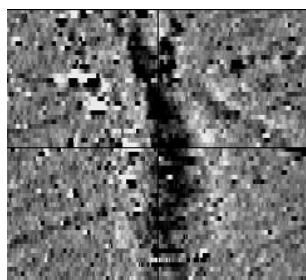
Strength of response

The amplitude of a magnetic response is an important factor in assigning an interpretation to a particular anomaly. For example a positive anomaly covering a 10m² area may have values up to around 3000nT, in which case it is likely to be caused by modern magnetic interference. However, the same size and shaped anomaly but with values up to only 4nT may have a natural origin. Colour plots are used to show the amplitude of response.

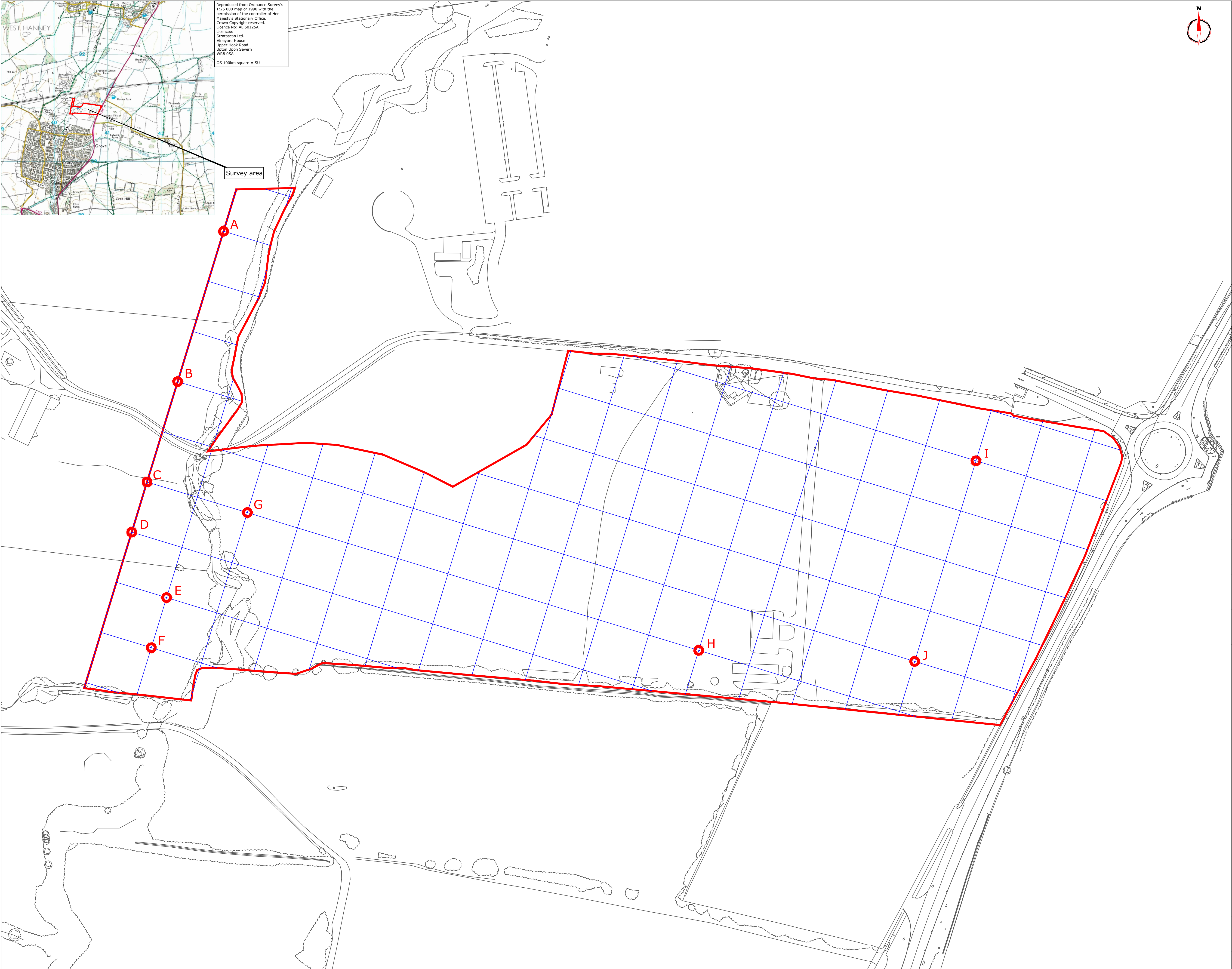
Thermoremanent response

A feature which has been subject to heat may result in it acquiring a magnetic field. This can be anything up to approximately +/-100 nT in value. These features include clay fired drains, brick, bonfires, kilns, hearths and even pottery. If the heat application has occurred in situ (e.g. a kiln) then the response is likely to be bipolar compared to if the heated objects have been disturbed and moved relative to each other, in which case they are more likely to take an irregular form and may display a debris style response (e.g. ash).

Weak background variations



Weakly magnetic wide scale variations within the data can sometimes be seen within sites. These usually have no specific structure but can often appear curvy and sinuous in form. They are likely to be the result of natural features, such as soil creep, dried up (or seasonal) streams. They can also be caused by changes in the underlying geology or soil type which may contain unpredictable distributions of magnetic minerals, and are usually apparent in several locations across a site.



Reproduced from Ordnance Survey's 1:25 000 map of 1998 with the permission of the controller of Her Majesty's Stationary Office. Crown Copyright reserved. Licence No: AL 50125A
Licencees:
Stratascan Ltd.
Vineyard House
Upper Hook Road
Upton Upon Severn
WR8 0SA
OS 100km square = SU



Amendments

Issue No.	Date	Description
-	-	-
-	-	-

© Stratascan Ltd - 2015

Survey area

Site centred on NGR SU 406 910

OS REFERENCING INFORMATION

A	440359.48, 191153.00
B	440333.21, 191066.92
C	440315.70, 191009.54
D	440306.94, 190980.84
E	440326.88, 190943.39
F	440318.12, 190914.70
G	440373.08, 190992.02
H	440631.33, 190913.21
I	440789.88, 191021.66
J	440754.86, 190906.88

Job No. J8818 Survey Date SEP 15

Client

OXFORD ARCHAEOLOGY

Project Title

LAND AT WILLIAMS GRAND PRIX HOLDINGS PLC, GROVE, OXFORDSHIRE

Subject

SITE LOCATION, SURVEY AREA & REFERENCING

GEOPHYSICS FOR ARCHAEOLOGY AND ENGINEERING

VINEYARD HOUSE UPTON UPON SEVERN WR8 0SA

T: 01684 592266 E: info@stratascan.co.uk www.stratascan.co.uk

EUROPEAN GPR ASSOCIATION

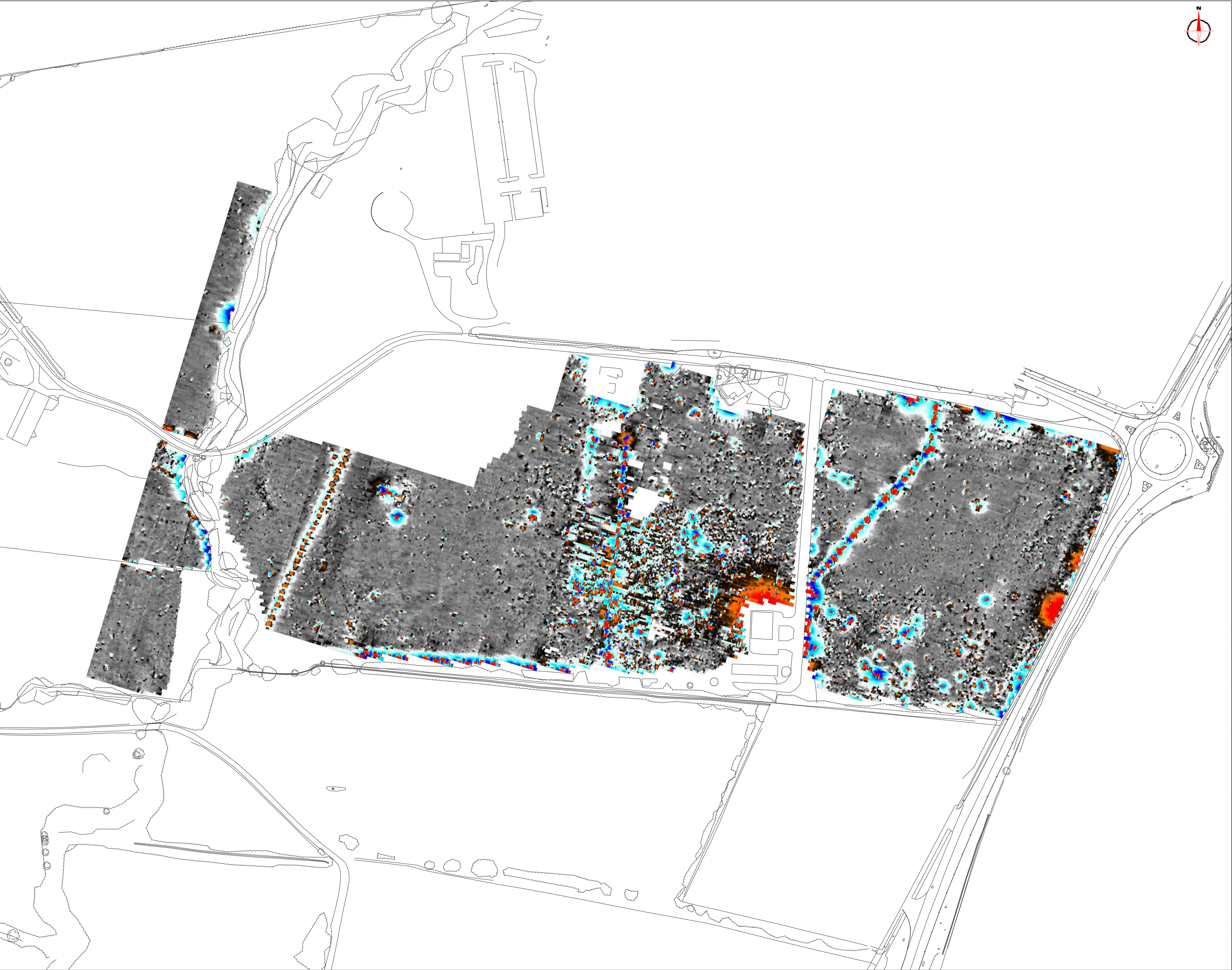
SUMO GROUP MEMBER

ISO 9001 certified ISO 14001 certified

Scale 1:1000

0m 10 20 30 40 50 60m

Plot A1	Checked by DGE	Issue No. 01
Date SEP 15	TR	Figure No. 01



Amendments		
Issue No.	Date	Description
-	-	-
-	-	-
© Stratascan Ltd - 2015		

Plotting parameters		<div><div></div><div>+100nT</div><div>+25nT</div><div>+3nT</div><div>-3nT</div><div>-25nT</div><div>-100nT</div></div>
Maximum +100nT (red)		
Minimum -100nT (blue)		

Job No.	J8818	Survey Date	SEP 15
Client			
OXFORD ARCHAEOLOGY			
Project Title			
LAND AT WILLIAMS GRAND PRIX HOLDINGS PLC, GROVE, OXFORDSHIRE			
Subject			
COLOUR PLOT OF GRADIOMETER DATA SHOWING EXTREME VALUES			
<div><div>STRATASCANTM</div><div>GEOPHYSICS FOR ARCHAEOLOGY AND ENGINEERING</div><div>VINEYARD HOUSE UPTON UPON SEVERN WR8 0SA</div><div>T: 01684 592266 E: info@stratascan.co.uk www.stratascan.co.uk</div></div>			
<div><div><div>GPR ASSOCIATION</div><div>SUMO GROUP MEMBER</div></div><div><div>ISO 9001 certified</div><div>ISO 14001 certified</div><div>ISO 18001 certified</div></div></div>			
Scale 1:1000 0m 10 20 30 40 50 60m			
Plot	A1	Checked by	DGE
Date	SEP 15	Issue No.	01
		Drawn by	TR
		Figure No.	02



Amendments

Issue No.	Date	Description
-	-	-
-	-	-

© Stratascan Ltd - 2015

Plotting parameters

Maximum +2nT (black)
Minimum -2nT (white)

Zero
Mean

-2nT +2nT

+2nT

-2nT

Job No.

J8818

Survey Date

SEP 15

Client

OXFORD ARCHAEOLOGY

Project Title

LAND AT WILLIAMS GRAND
PRIX HOLDINGS PLC, GROVE,
OXFORDSHIRE

Subject

PLOT OF MINIMALLY
PROCESSED GRADIOMETER
DATA

STRATASCAN™

GEOPHYSICS FOR ARCHAEOLOGY
AND ENGINEERING

VINEYARD HOUSE
UPTON UPON SEVERN
WR8 0SA

T: 01684 592266
E: info@stratascan.co.uk
www.stratascan.co.uk

GPR
ASSOCIATION

SUMO
GROUP
MEMBER

IMS
ISO 9001
certified

UKAS
ISO 9001
certified

IMS
ISO 14001
certified

UKAS
ISO 14001
certified

Scale

1:1000

Plot

A1

Checked by

DGE

Issue No.

01

Date

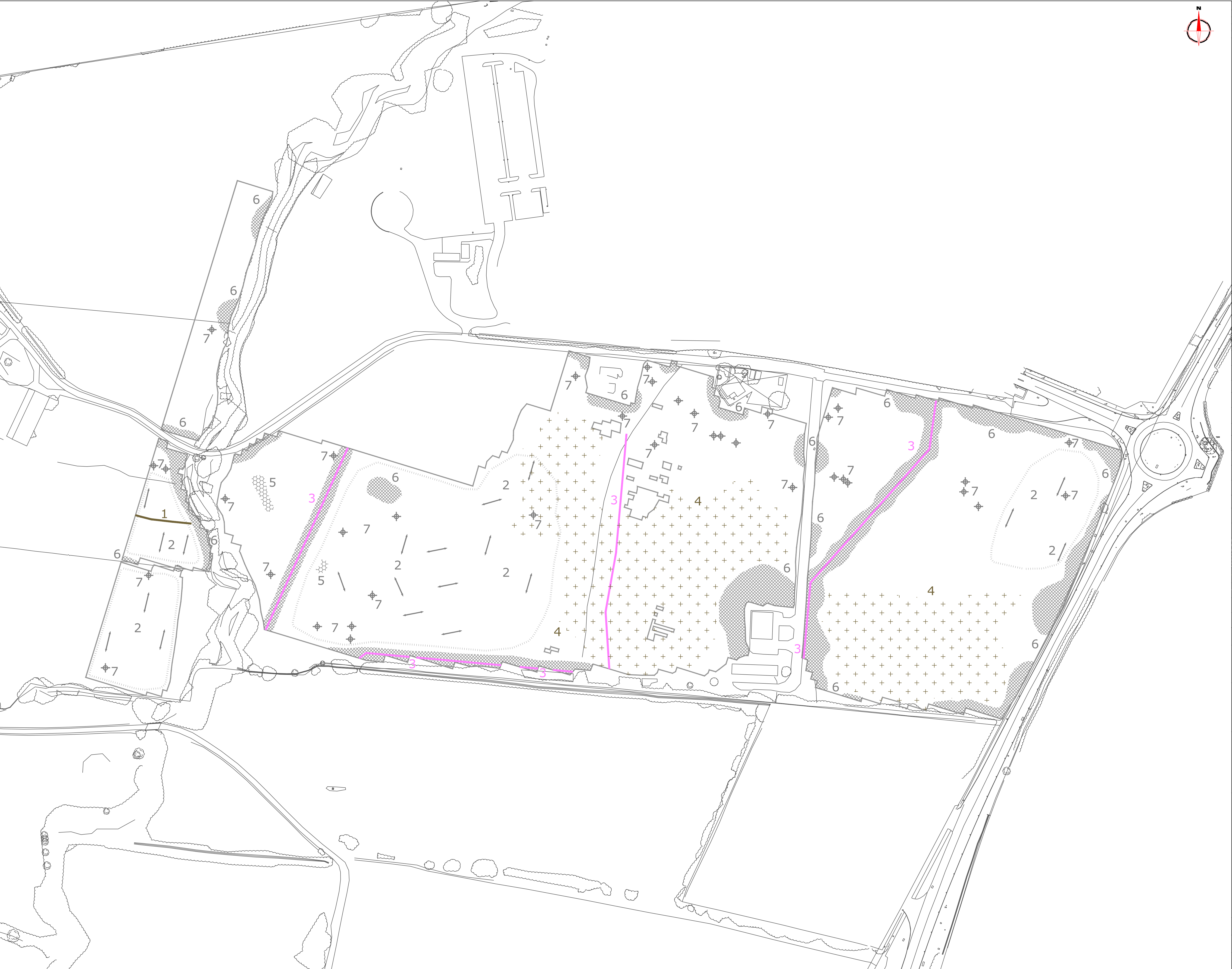
SEP 15

Drawn by

TR

Figure No.

03



Amendments

Issue No.	Date	Description
-	-	-
-	-	-
© Stratascan Ltd - 2015		

PROBABLE ARCHAEOLOGY

Positive anomaly / weak positive anomaly - probable cut feature of archaeological origin

Negative anomaly / weak negative anomaly - probable bank or earthwork of archaeological origin

POSSIBLE ARCHAEOLOGY

Positive anomaly / weak positive anomaly - possible cut feature of archaeological origin

Negative anomaly / weak negative anomaly - possible bank or earthwork of archaeological origin

MEDIEVAL/POST-MEDIEVAL AGRICULTURE

Widely spaced curving parallel linear anomalies - probably related to ridge-and-furrow

OTHER ANOMALIES

Linear anomaly - probably related to pipe, cable or other modern service

Job No.

J8818

Survey Date

SEP 15

Client

OXFORD ARCHAEOLOGY

Project Title

LAND AT WILLIAMS GRAND PRIX HOLDINGS PLC, GROVE, OXFORDSHIRE

Subject

ABSTRACTION AND INTERPRETATION OF GRADIOMETER ANOMALIES

STRATASCAN™

GEOPHYSICS FOR ARCHAEOLOGY AND ENGINEERING

VINEYARD HOUSE
UPTON UPON SEVERN
WR8 0SA

T: 01684 592266
E: info@stratascan.co.uk
www.stratascan.co.uk

EUROPEAN GPR ASSOCIATION

SUMO GROUP MEMBER

IMS ISO 9001 certified

UKAS ISO 9001 certified

IMS ISO 14001 certified

UKAS ISO 14001 certified

Scale

1:1000

0m 10 20 30 40 50 60m

Plot

A1

Checked by

DGE

Issue No.

01

Date

SEP 15

Drawn by

TR

Figure No.

04

Your Survey Partner

For a complete and complementary
range of survey services

*Survey services
you can rely on*

Archaeological
As Built Records
BIM Ready 3D Models
Boundary Disputes
CCTV
Geophysical
Laser Scanning
Measured Building
Pipeline Routes
Railway
Retrofit
Setting Out
Statutory Plan Collation
Topographic
Utility Mapping
UXO Detection
Void Detection

STRATASCAN LTD

Vineyard House Upper Hook Road Upton upon Severn
Worcestershire WR8 0SA United Kingdom

T:01684 592266 F: 01684 594142
info@stratascan.co.uk www.stratascan.co.uk

STRATASCAN™



SUMO
Group
Member