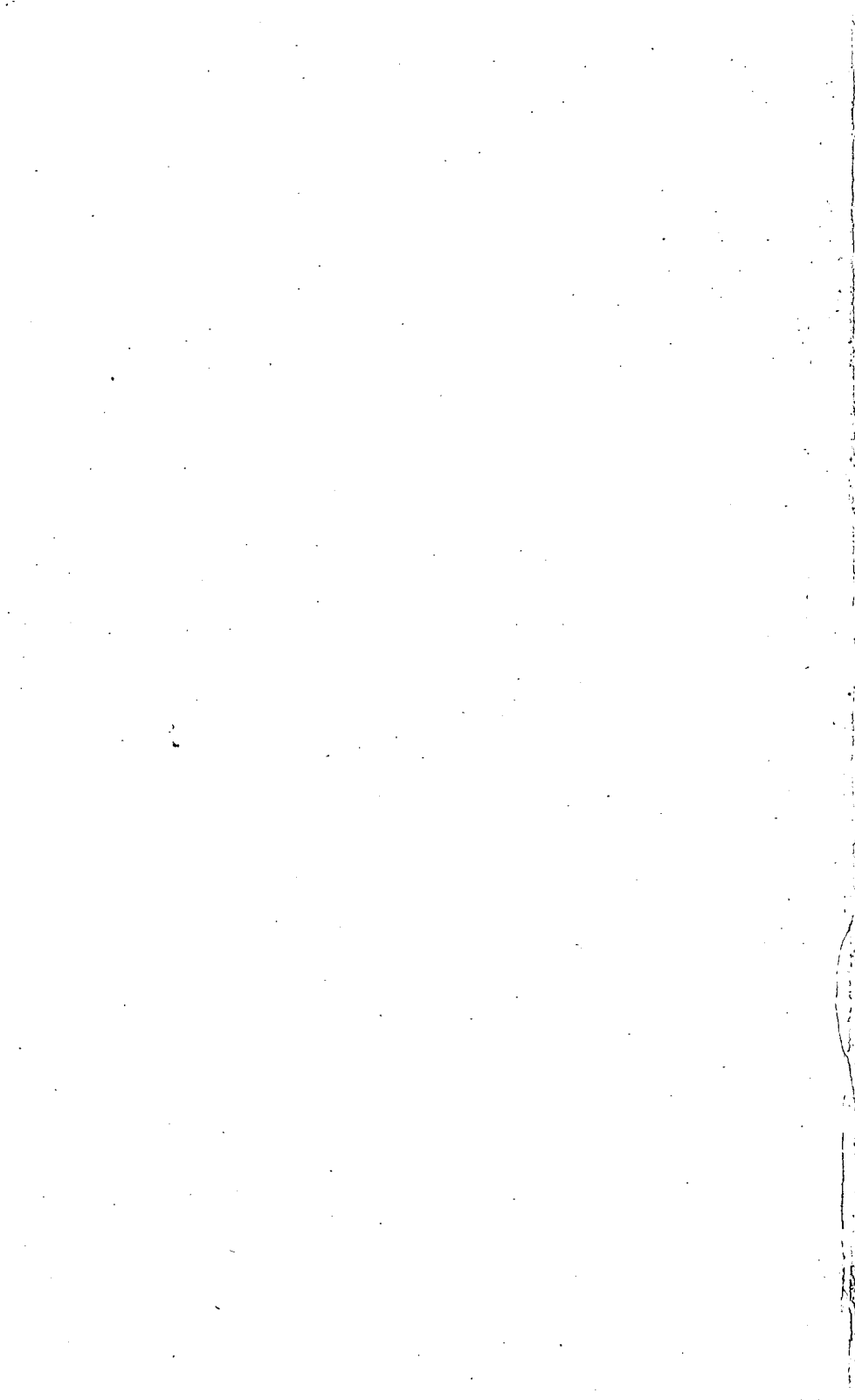


John Oxberry
Gateshead

GATESHEAD PUBLIC LIBRARIES
REFERENCE LIBRARY

Accession No. C 8251

Class No. L 906



ARCHAEOLOGIA AELIANA:

OR,

Miscellaneous Tracts

RELATING TO ANTIQUITY.

PUBLISHED BY THE
SOCIETY OF ANTIQUARIES OF NEWCASTLE-UPON-TYNE.

VOLUME XII.



NEWCASTLE-UPON-TYNE:

PRINTED BY ANDREW REID, PRINTING COURT BUILDINGS, AKENSIDE HILL.

M.DCCC.LXXXVII.

CITY OF PUBLIC LIBRARIES

CLASS NO.

BOOK NO.

C-8251

CHECKED

DATE

CONTENTS.

	PAGE.
List of Plates, &c.	iii.
Contributions of Plates, etc.	iv.
Report of the Society for 1886	(i.) v.
Treasurer's Balance Sheet ...	(iv.) viii.
Officers for 1886 ...	(vi.) x.
Report of the Society for 1887 ...	xi.
Treasurer's Balance Sheet... ..	xiv.
Officers for 1887	xvi.
List of Members	xvii.
I.—Catalogue of the Inscribed and Sculptured Stones of the Roman Era in possession of the Society of Antiquaries, Newcastle (Illustrated)	1
II.— <i>Blatum Belgium</i> ; or Notes on the Camps of Birrens and Burnswark. By Thos. Hodgkin, D.C.L. (Illustrated)	101
III.—The Bigg Market Military Execution, 1640: The Year of Newburn. By James Clephan	112
IV.—An Account of the Discovery of a British perforated Axe-hammer and a Roman Silver Coin, near Barrasford, with Notices of other Stone Implements from this locality. By the Rev. G. Rome Hall, F.S.A. (Illustrated)	116
V.—On a Building at <i>Cilurnum</i> , supposed to be Roman Baths. By Sheriton Holmes (Illustrated)	124
VI.—Remarks on two Mediaeval Grave Covers, from St. Nicholas's Church, Newcastle, discovered in June, 1886. By C. C. Hodges (Illustrated)	130
VII.—Old Tyne Bridge and its Story. By James Clephan	135
VIIa.—Report on Old Tyne Bridge. By John Smeaton	148
VIII.—The late Sir C. E. Trevelyan, Bart. By the Rev. Dr. Bruce, D.C.L., F.S.A., etc. (Portrait).	150
VIIIa.—Notes on a Pre-Historic Camp and Avenue of Stones on Thockrington Quarry House Farm. By R. Cecil Hedley (Plan)	155
IX.—Report of Excavations in Cumberland, <i>per lineam Valli</i> , undertaken by, and at the cost of the Cumberland and Westmoreland Antiquarian and Archaeological Society (Illustrated)	159
X.—A Terrier of Lands in the Manor of Tinemouth, in 1649; with Notes by Horatio A. Adamson	172
XI.—Three Papal Bulls confirmatory of the Possessions of the Riddells of Riddell. By Cadwallader J. Bates, M.A.	191
XII.—On a Roman Tombstone in the Carlisle Museum. By Dr. Hulsebos (Illustrated)	205
XIII.—Departure of the Quayside Wall; and what became of it. By James Clephan	210

XIV.—An attempt to trace the Delavals from the time of the Norman Conquest to the present day. By the Rev. E. H. Adamson, Vice-President (Illustrated)	215
XIVa.—Notes on the Chapel of our Lady, Seaton Delaval. By W. S. Hicks	229
XV.—The Walls of Newcastle in 1638. By Richard Welford (Illustrated)	230
XVI.—The Plate and Insignia of the Corporation of Newcastle-upon-Tyne. By the Rev. J. R. Boyle (Illustrated)	236
XVII.—Recent Explorations in Ancient British Barrows, containing Cup-marked Stones, near Birtley. By the Rev. G. Rome Hall, F.S.A. (Illustrated)	241
XVIII.—On some Cup-incised Stones, found in an Ancient British Burial-Mound at Pitland Hills, near Birtley. By the Rev. G. Rome Hall, F.S.A. (Illustrated)	268
XIX.—On some recently discovered Inscriptions of the Roman Period (Illustrated)—	
1. On Altars at Chester-le-Street, Caervoran, and Corbridge. By the Rev. Dr. Bruce... ..	284
2. On Altars at West Harrington and Birdoswald. By the Rev. Dr. Bruce	287
3. On Inscriptions at Cliburn, &c.—	
a. By R. S. Ferguson	289
b. By W. Thompson Watkin	290
4. On Altar from Chester-le-Street. By W. Thompson Watkin... ..	292
5. On a Greek Inscription from Risingham. By Prof. E. C. Clark, Hon. Member	294
6. On a Roman Tombstone at Mertola, Portugal. By the Rev. Dr. Bruce	297
XX.—The Bells of the Priory Church of St. Andrew, Hexham. By J. P. Gibson	299

ERRATA.

In the pagination of the Report for 1886, for i-vi. read v-x.

Page 130.—The grave covers were discovered in making alterations in the vestries; the churchwardens caused them to be taken up and cleaned and placed in the Bewicke chapel.

Page 134, line 11, for "fifteenth" read "sixteenth."

LIST OF PLATES.

	PLATE.	PAGE.
✓ Roman Altar at Burnfoot, Ecclefechan	I.	101
✓ Plan of Roman Camp at Birrens	II.	104
✓ Plan, etc., of Burnswark... ..	III.	108
✓ Ancient British Axe-hammers	IV.	118
✓ Roman Buildings at <i>Cilurnum</i>	V.	124
✓ Portrait of Sir C. E. Trevelyan, Bart.	VI.	150
✓ Plan of Ancient British Camp, etc., at Thockrington	VII.	156
✓ Plan of Roman Buildings at Gilsland... ..	VIII.	160
✓ Plan of Stanegate at Poltross Burn	IX.	160
✓ Plan of Roman Station at Stanwix, etc.	X.	170
✓ Roman Tombstone in Carlisle Museum	XI.	205
✓ Seaton Delaval Hall	XII.	215
✓ The Walls of Newcastle in 1638	XIII.	230
✓ Sir Jacob Astley's Plan of Newcastle... ..	XIV.	234
✓ 'Loving Cup' belonging to the Corporation of Newcastle	XV.	238
✓ Ancient British Urns from North Tindale	XVI.	244
✓ Cup-marked Stones from North Tindale	XVII.	272
✓ Cup-marked Stone from <i>Cilurnum</i> , now at Chesters	XVIII.	278

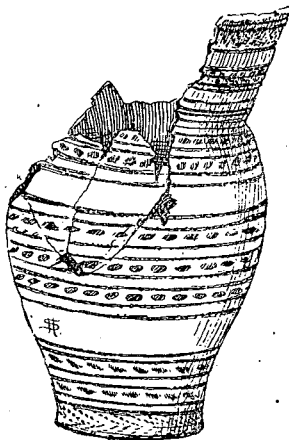
WOODCUTS, &c.

	PAGE.
Ancient British Urn, Black Gate Museum	iv.
Roman Altars, &c., in Black Gate Museum	2-94
„ Altar at Burnfoot (from a drawing by Mrs. Hodgkin)	100
Mediaeval Grave Covers, St. Nicholas's Church (drawn by C. C. Hodges)... ..	131
<i>Fac-simile</i> of Autograph of John Smeaton	149
Roman Tombstone, Carlisle Museum	204
Seaton Sluice (drawn by C. J. Spence)... ..	222
Interior of Chapel at Seaton Delaval (drawn by C. J. Spence)	224
Ancient British Beads of Gold from Chesterhope (cut by Bewick)	248
„ „ Urn from Hallington, in Black Gate Museum	253
Roman Altars, Chester-le-Street... ..	284, 292
„ „ Caervoran	285, 286
„ Altar, <i>Amboglanna</i>	288
„ Inscribed Stone at Cliburn	289
Greek Inscription on fragment of Pottery, from <i>Habitancum</i>	295
Roman Christian Inscription, from Mertola, Portugal	297
'Creeping Trough,' Black Gate Museum	316

CONTRIBUTIONS OF PLATES, &c.

- J. Clayton, V.P., F.S.A. : Plate xviii, and Woodcuts at pages 285 and 286.
 R. C. Hedley : Plan of Ancient British Camp, page 156.
 Sheriton Holmes : Plan of Roman buildings at *Cilurnum* (pl. v.), page 124.
 C. J. Spence : Etching facing page 215, and Drawings at pages 223 and 224.
 R. Welford : Plans of Newcastle, pages 230 and 234 (pl. xiii. and xiv.).

Plate vi., from a photo. by W. & D. Downey, of London and Newcastle.
 Plates xvi. (centre and right hand urn), xvii., and xviii. are from photographs
 by J. P. Gibson, of Hexham, a Member of the Society.
 Plate xvi. (left hand urn) from a photo. by J. Bacon of Newcastle.



IN BLACK GATE MUSEUM.