

fourth lord Ogle, who died in 1539.<sup>3</sup> In like manner, when the fifth lord, being 'commanded to invade the realm of Scotland in the king's 'majesty's wars,' made his last will in 1543, 'in case of being slain by 'the chance of war,' as actually did befall him on Ancrum moor, he bequeathed to his wife Jane 'Cockell Parke and Towre.'<sup>4</sup>

'A projection on the west side of the tower, which had small 'windows in it, fell,' Hodgson informs us, 'in 1828, when the opening 'occasioned by the fall was filled up in a line with the rest of the wall; 'and the mantelpiece of one of the two curious old chimneys formerly 'in the tower, and cleverly decorated with dentils and mouldings, was 'inserted high up in the gap on the outside, by way of curiosity and 'ornament.'<sup>5</sup>

Cockle Park has descended to its present owner, the Duke of Portland, in the same manner as Bothal Castle.<sup>6</sup>

<sup>3</sup> 'Cocleparke cum Turre &c. que dudum fuer. in manibus Anne Ogle matris mee.'—Trust deed from Robert 5th Lord Ogle, dated 4 Apr. 35 H. viij; *Lansd. MS.* 326, fo. 82; Hodgson, *Northd.* II. i. p. 394 n. A deed from Robert 4th Lord Ogle to his brother Sir William Ogle of 'Cokill Park,' relating to Cawsey Park, and dated 10 May 18 H. viij, and one from Robert the 5th Lord to the same, his uncle, relating to Earsdon, and dated 2 Dec. 28 H. viij, are in the possession of Mr. Brumell of Morpeth.—*Hist. MSS. Comm. App. 6th Report*, p. 540.

<sup>4</sup> Hodgson, *Northd.* II. i. p. 393 n.

<sup>5</sup> *Ibid.* II. ii. p. 141.

<sup>6</sup> See above, p. 287.

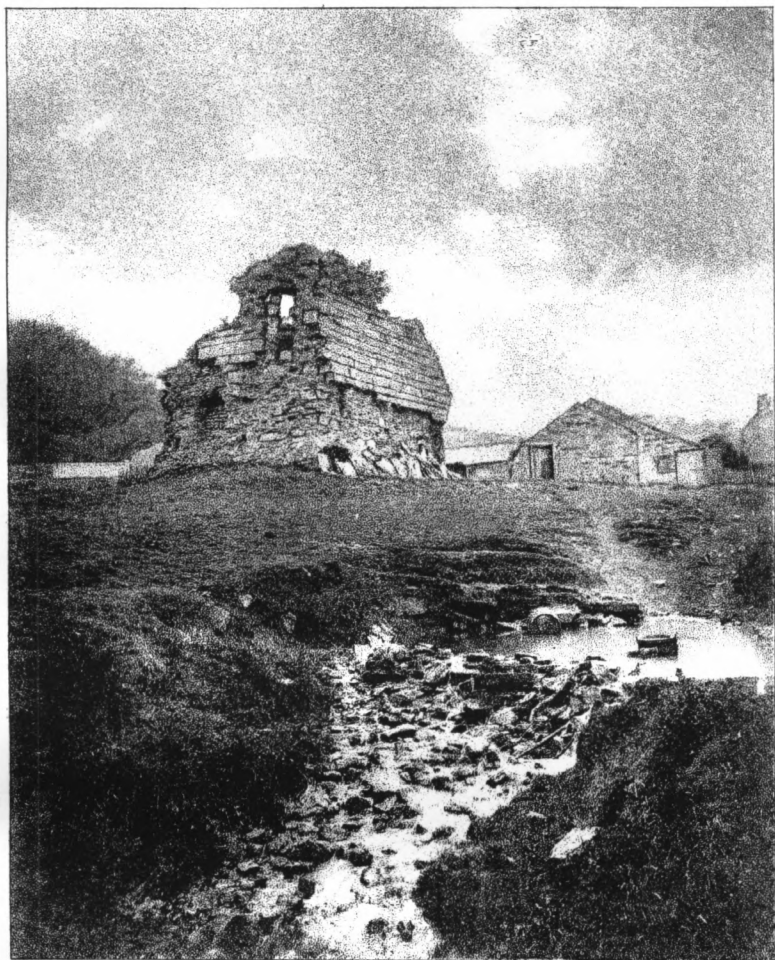
---

## TOSSON TOWER.

---

LITTLE can be said of the tower of Great Tosson, about a mile from Rothbury, on the south side of the Coquet. It is mentioned in 1541 as 'a tower of the lorde Ogles Inherytance & not in good reparacions.'<sup>1</sup> The Ogles obtained lands here through a marriage with the daughter of Sir Robert Hepple in about 1330, but the tower is probably of later construction. It measures about 25 feet from east to west, by 18 feet from north to south. There has been the wonted slit for air and light at the west end of the vault. Very near the south-east corner there remain portions of the jamb and springing of the inner arch of the doorway. Some traces of the stair are left in the north-east angle, and above these a square-headed door and flat-roofed passage is seen from outside.

<sup>1</sup> See above, p. 45.



J. P. GIBSON. PHOTO.

"IRON-PHOTO" SPRADUE & CO. LONDON

TOSSION TOWER, NEAR ROTHBURY, FROM THE N.E.

1884.

THIS PLATE CONTRIBUTED BY SIR W. G. ARMSTRONG.

