

GATESHEAD PUBLIC LIBRARIES

REFERENCE LIBRARY

Accession No. C 8351

Class No. L906

ARCHAEOLOGIA AELIANA.

VOL. XXIV.



ARCHAEOLOGIA AELIANA:

OR

Miscellaneous Tracts

RELATING TO ANTIQUITIES.

PUBLISHED BY THE

SOCIETY OF ANTIQUARIES OF NEWCASTLE UPON TYNE.

VOLUME XXIV.



LONDON AND NEWCASTLE-UPON-TYNE:

ANDREW REID & Co., LIMITED, PRINTING COURT BUILDINGS, AKENSIDE HILL.

LONDON OFFICE: 11, GREAT ST. HELENS, E.C.

M.DCCC.CIII.

| GATESHEAD PUBLIC LIBRARIES | |
|----------------------------|------------------|
| CLASS NO. | BOOK NO. 8357 |
| CHECKED | DATE |

NEWCASTLE-UPON-TYNE
ANDREW REID AND COMPANY, LIMITED, PRINTING COURT BUILDINGS,
AKENSIDE HILL.

CONTENTS.

| | PAGE. | |
|---|---------|-----|
| List of Plates | vi | |
| Other Illustrations | vi, vii | |
| Contributions of Plates, etc. | viii | |
| Annual Report for 1901 | ix | |
| Treasurer's Balance Sheet for 1901 | xiv | |
| Curators' Report for 1901 | xvi | |
| Gifts to Museum in 1901 | xvii | |
| Council and Officers for 1901 | xx | |
| Honorary Members | xxi | |
| Ordinary Members | xxii | |
| Societies exchanging Publications | xxxi | |
| ----- | | |
| I.—Excavations on the line of the Roman Wall:— | | |
| 1. Introduction. By Thomas Hodgkin, D.C.L., F.S.A., V.P. | 1 | |
| 2. Mucklebank Wall Turret. By J. P. Gibson | 13 | |
| 3. Great Chesters (ÆSICA). By J. P. Gibson | 19 | |
| II.—Discoveries in the Chapel at Raby Castle, County Durham. By | | |
| J. P. Pritchett | 65, 114 | |
| III.—Notes on Roman and Medieval Engines of War. By R. Coltman | | |
| Clephan, F.S.A., V.P. | 69 | |
| IV.—The Brumell Collection of Charters, etc. By J. Crawford | | |
| Hodgson, F.S.A. | 115 | |
| V.—Abstract of Deeds at Kirkleatham Hall, relating to the Chantry | | |
| of the B.V.M. in Chester-le-Street Church. By T. M. Fal- | | |
| low, M.A., F.S.A. | 124 | |
| VI.—Proofs of Age of Heirs to Estates in Northumberland (continua- | | |
| tion). By J. C. Hodgson | 126 | |
| VII.—Local Muniments (second Instalment). By Richard Welford, | | |
| M.A., V.P. | 128 | |
| VIII.—Obituary Notice of Cadwallader John Bates, M.A., V.P. By | | |
| Thomas Hodgkin | 178 | |
| IX.—Extracts from the Privy Seal Dockets, relating principally to the | | |
| North of England. By F. W. Dendy, V.P. | 184 | |
| X.—Seaton Sluice. By W. W. Tomlinson | | 229 |
| XI.—Notes on a Northumbrian Roll of Arms, known as 'The Craster | | |
| Tables.' By J. C. Hodgson | 244 | |
| ----- | | |
| Index | 257 | |

PLATES, ETC.

| | |
|---|--------------------|
| 01.—Mucklebank Wall Turret and Walltown Crags | ... facing page 13 |
| AESICA (Great Chesters): | |
| I.—West Gateway from S.E. | 26 |
| II.—Western Rampart and West Gateway | 28 |
| III.—N.W. Angle Turret from East, showing junction with North Wall of Camp | 34 |
| IV.—N.W. Angle Turret from the West | 36 |
| V.—South Gateway and Circular Chamber | 38 |
| VI.—The lines of the <i>Murus</i> and <i>Vallum</i> at Cawfields, from W. | 46 |
| VII.—Plan of AESICA | 62 |
| VIII.—Plan of Chapel at Raby Castle, County Durham | 66 |
| IX.—Longitudinal sections of same | 66 |
| X.—Transverse sections of same | 66 |
| XI.—Portrait of the late C. J. Bates, V.P. | 179 |
| XII.—The North Harbour Gates, Seaton Sluice, 1876 | 229 |
| XIII.—Seaton Sluice, 1880 | 232 |

OTHER ILLUSTRATIONS.

| | PAGE. |
|---|-------|
| Bronze Dagger from river Blyth | vii |
| Ancient Ironbound Box | viii |
| Corbel from Pilgrim Street, Newcastle | xxi |
| Sockburn Church in 1826 | xxx |
| Old Bottles from Gallowgate, Newcastle | xxxi |
| Plan of Camp of Polybius | 7 |
| Plan of Camp of Hyginus | 9 |
| Plan of Camp of BREMENIUM (High Rochester) | 11 |
| Centurial Stone from Mucklebank Wall Turret | 12 |
| Fragments of <i>Amphora</i> from same place | 18 |
| AESICA (Great Chesters):— | |
| Vaulted Chamber in Camp | 21 |
| Silver Plated <i>Fibula</i> | 23 |
| Gold Plated <i>Fibula</i> | 25 |
| South Tower of West Gateway | 27 |
| Junction of Southern Chamber of West Gateway with outside of Camp Wall | 30 |
| Exterior of Built-up West Gateway | 32 |
| Eastern Guard Chamber of South Gateway | 38 |
| <i>Graffiti</i> and Potters' Names | 40 |

AESICA (continued) :—

| | |
|--|--------------------|
| Silver Necklace and Pendant | 41 |
| Gold and Silver Finger Rings, Gold Earring and Gnostic <i>Intaglio</i> | 42 |
| Bronze Figure of Mercury | 43 |
| Suburban Building No. III. | 44 |
| Ground Plan of same | 46 |
| Hypocaust in same building | 49 |
| Same building from East | 50 |
| Building S.E. of Pretorium | 54 |
| Inscriptions | 33, 55, 56, 58, 59 |
| Hypocaust near Centre of Camp from the East | 60 |
| Hypocaust near South Gateway, from the West | 61 |
| Figure of Mercury... .. | 64 |
| Early Sundials at St. Cuthbert's Church, Darlington | 68 |
| Principle of Catapult and Balista | 70 |
| Soldiers with a Balista (Column of Trajan) | 71 |
| Model of a Catapult made at Meudon | 72 |
| Model of a <i>Balista</i> made at Meudon | 73 |
| Model of an <i>Onager</i> made at Meudon | 75 |
| Trébuchet from a 14th Century Ivory Carving | 89 |
| Romano-Gallic Crossbow | 98 |
| Crossbows and Quarrels | 104 |
| A Caltrap | 106 |
| A Battering Ram on Arch of Septimius Severus | 108 |
| A <i>Testudo</i> on the Antonine Column | 111 |
| Design of Window at end of Side Chamber in Raby Castle Chapel | 114 |
| Potters' names from <i>Aesica</i> | 228 |
| Plan of Seaton Sluice Harbour | 230 |
| 'Hartley Haven,' from an old engraving | 236 |
| Fac-similes of autographs of Delavals | 243 |



BRONZE DAGGER, FROM RIVER BLYTH (see p. xviii).

CONTRIBUTIONS OF PLATES, ETC.

Thanks are given to the following :—

Brewis, Parker, for photographs from which blocks on pp. xxi, xxxii, and 68 have been made.

Clephan, R. C., for the blocks which illustrate his paper, pp. 70 to 111.

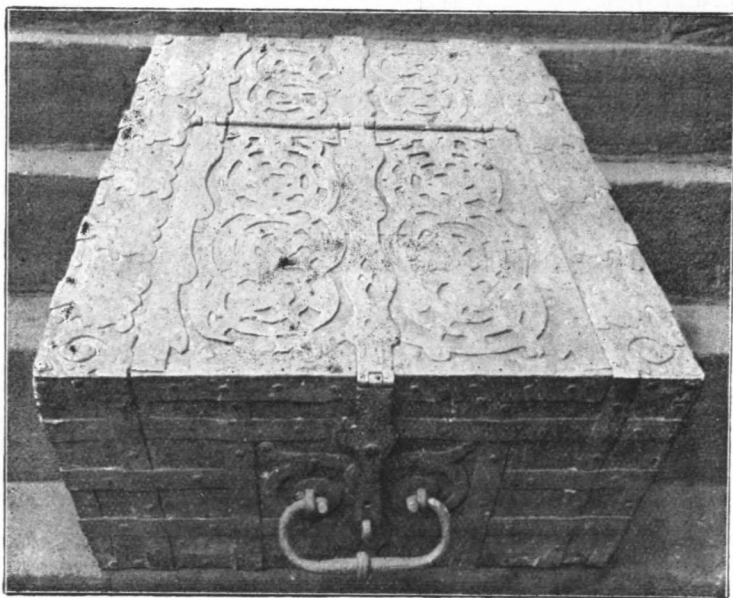
Fallow, T. M., for loan of etching for block on p. xxx.

Gibson, J. P., for the photographs from which illustrations have been made for his papers, pp. 12 to 64.

Pritchett, J. P., for the drawings illustrating his paper, facing p. 66 and on p. 114.

Society of Antiquaries of London, for loan of blocks on pp. 23, 25, 41 and 42 (silver rings).

Spence, C. J., for photographs for blocks on pp. 42 (*intaglio*) and 43, and for drawings and plates facing pp. 229 and 232.



IRONBOUND BOX (see p. xvii).