

GATESHEAD PUBLIC LIBRARIES

This book has been kindly donated by

F.W.D. Manders, Esq.,

58, Long Acre, Dairy Lane Estate,

HOUGHTON -LE-SPRING.

Thomas Carrick Watson,

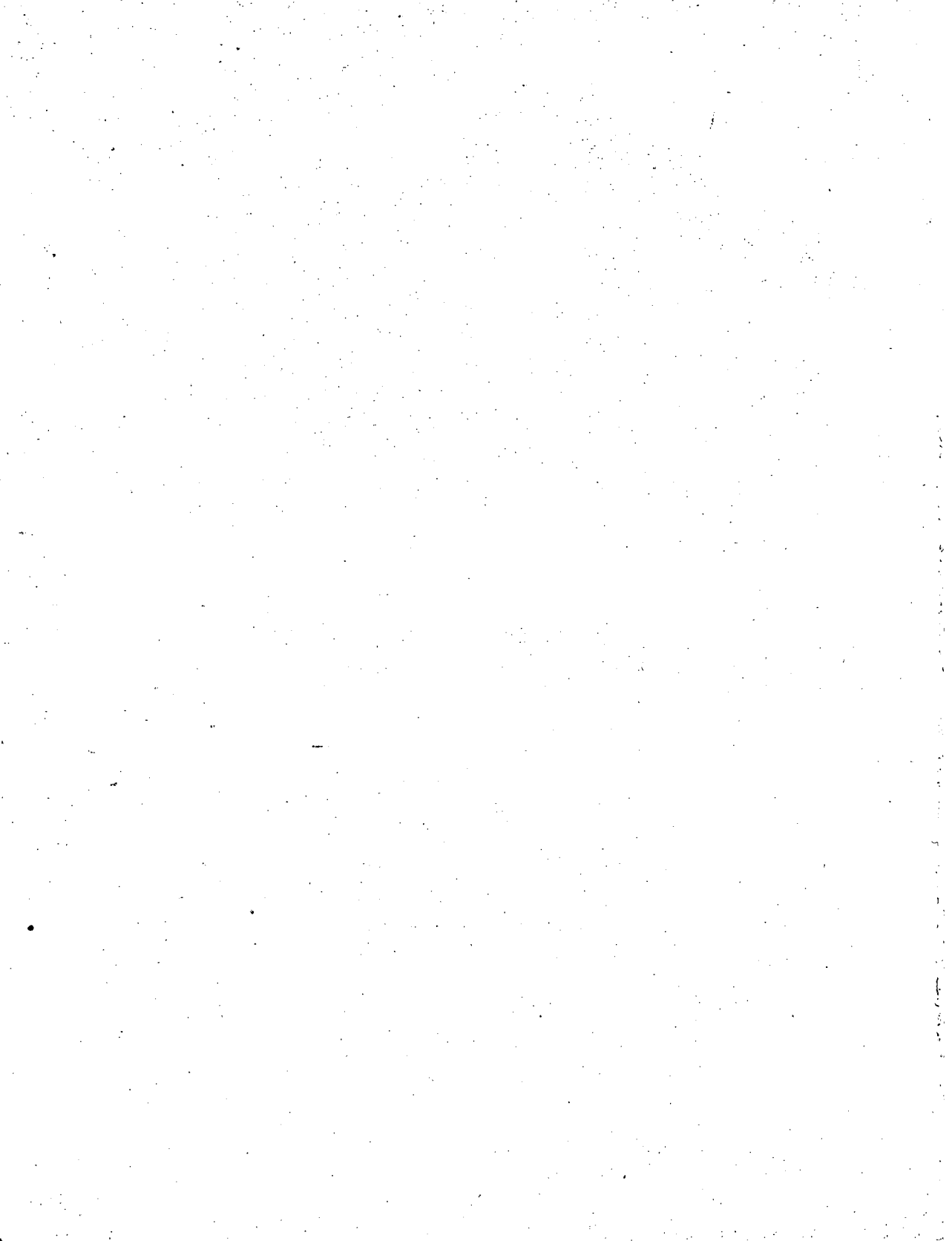
John

GATESHEAD PUBLIC LIBRARIES

Archives & Local History Library

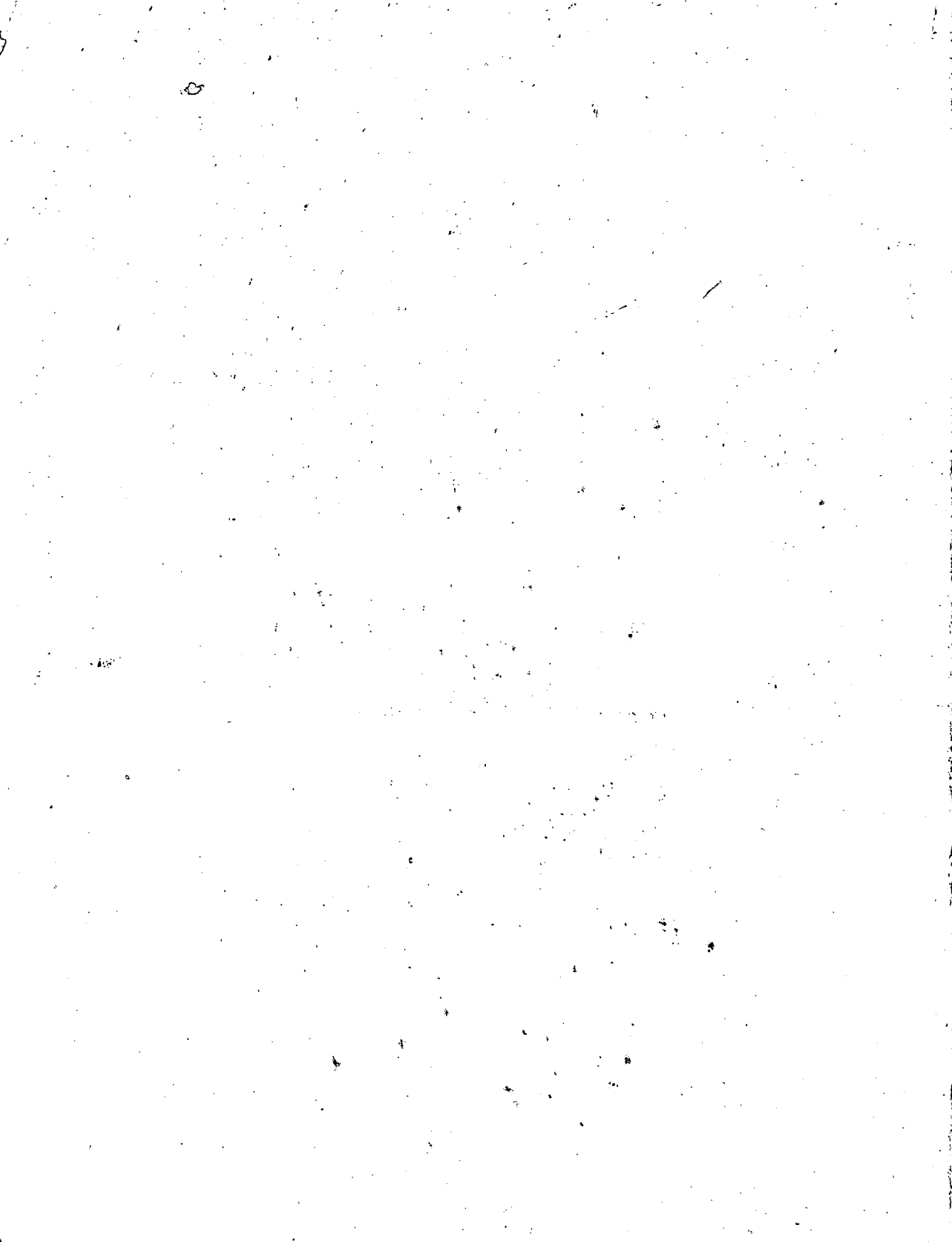
Class No. L 906

Accession No. 35022



ARCHAEOLOGIA AELIANA.

THIRD SERIES, VOLUME V.



BRITISH INSTITUTE OF ADULT EDUCATION
NATIONAL APPEAL FOR BOOKS.
PROPERTY OF THE UNEMPLOYED CENTRE.

ARCHAEOLOGIA AELIANA:

OR

MISCELLANEOUS TRACTS

RELATING TO ANTIQUITY.

PUBLISHED BY THE

SOCIETY OF ANTIQUARIES OF NEWCASTLE UPON TYNE

AND

EDITED BY R. BLAIR:

THIRD SERIES, VOLUME V.



NEWCASTLE-UPON-TYNE:

ANDREW REID & COMPANY, LTD., PRINTING COURT BUILDINGS, AKENSIDE HILL.

M.DCCC.IX.

CLASS NO.	BOOK NO.
L 906	35022
CHECKED	DATE
7m	4/5/74

NEWCASTLE-UPON-TYNE:
ANDREW REID AND COMPANY, LIMITED, PRINTING COURT BUILDINGS,
AKENSIDE HILL.

CONTENTS.

	PAGE.
List of plates and other illustrations	vi, vii
Contributions of photographs, etc.	viii
Corrections and additions	viii
Annual Report	ix
Treasurer's Report and balance sheet	xviii
Gifts to Museum	xxii
Gifts of books, etc.	xxiii
Council and Officers	xxv
Honorary members	xxvi
Ordinary members	xxvi
Societies exchanging publications	xxxvii
I.—Municipal Contests in Newcastle, 1342-1345. By Thomas Hodgkin, D.C.L., F.S.A., a vice-president	1
II.—An Attempt to elucidate the Descents of the Family of Alder of Prendwick. By J. Crawford Hodgson, M.A., F.S.A., a vice-president	16
III.—The Woodman Charters, with note by H. H. E. Craster, Fellow of All Souls' College, Oxford	40
IV.—Local Muniments. By Richard Welford, M.A., a vice-president	55
V.—The Ryton Brasses, with some account of Archdeacon Bunny and his family. By Sidney Story Carr	147
VI.—Recently discovered Roman inscriptions. By J. Pattison Gibson, a vice-president, and F. Gerald Simpson.	
1. An altar from <i>Aesica</i>	158
2. A centurial stone from Cockmount hill	166
VII.—Some account of the Incorporated Company of Free Joiners of Newcastle-upon-Tyne. By John Stephenson Robson, a member of the Company	170
VIII.—Art and Archaeology: The Three Richardsons. By Richard Welford	197
IX.—Obituary notices of deceased members. By Richard Welford.	
1. Horatio A. Adamson, a vice-president	203
2. Robert Richardson Dees, a vice-president	208
X.—The Roman fort on the Stanegate at Haltwhistle-burn. By J. Pattison Gibson and F. Gerald Simpson	213
XI.—The Gatehouse and Barbican at Alnwick Castle, with an account of the recent discoveries. By W. H. Knowles, F.S.A.	286
XII.—CORSTOPTUM: Report on the excavations in 1908. By W. H. Knowles and R. H. Forster, M.A., LL.B., with contributions by H. H. E. Craster and F. Haverfield, LL.D., F.S.A.	305
Index	425
List of Publications	467

PLATES.

I.—Arms of Newcastle Joiners' Company facing page 170
II.—Portrait of Horatio A. Adamson ,, 203
HALTWHISTLE-BURN ROMAN FORT:		
III.—General plan of fort and district ('plate I') ,, 216
IV.—Plan of the fort ('plate II') ,, 224
V.—Sections through the fort ('plate III') ,, 232
VI.—West side of south gate and south gate looking south ,, 238
VII.—South gate looking north-east and east gate looking north-west ,, 240
VIII.—West gate looking west and south-west ,, 242
IX.—North-west angle and drain looking south-west; and north rampart from north-west angle ,, 244
X.—Drain at south-west angle looking north and south ,, 246
Xa.—Oven at north-east angle looking north; and portions of sites II and III, looking north-east ,, 248
XI.—Buttresses on west side of site IV, looking north; and outer face of rampart wall at south-west angle, looking north-west ,, 252
XII.—Sections through the fort ('plate IV') ,, 256
XIII.—The Stanegate at section MN looking north-east; and remains of storage vessels ,, 264
XIV.—Sections of pottery ('plate V') ,, 272
ALNWICK CASTLE:		
XV.—The Barbican and Gatehouse ,, 286
XVI.—North side of gatehouse and barbican ,, 288
XVII.—Section of ,, 289
XVIII.—Plan of different storeys ,, 290
XIX.—The drawbridge pit and the moat beyond ,, 294
XX.—Sectional elevations ,, 296
CORSTOPITUM:		
XXI.—The east granary, plan and sections ,, 310
XXII.—Plan of excavations, 1908 ,, 344
XXIII.—Portion of hoard of Roman gold coins found ,, 352

OTHER ILLUSTRATIONS.

	PAGE.		PAGE.
Late Celtic <i>fibula</i> found at Rising-ham	viii	Alnwick Castle (<i>continued</i>):	
Seals of Holgrave and Hastings	52, 53	showing the arches carrying the walls at the side of the causeway	300
Ryton Church:		In the drawbridge pit, looking outwards	301
Brass of John and Henry Bunny	146	In the drawbridge pit, looking inwards... ..	302
Brass of Francis Bunny	148, 150	CORSTOPTUM:	
Achievement of Francis Bunny I	152	Site plan	304
Achievement of Francis Bunny II	154	Sculptured slab	311
AESICA:		East granary from north-east ...	315
Plan of villa at	159	Wall of east granary with mullion	319
Roman altar to Fortune	160	Bas-relief of a sun-god	321
Inscribed tablet from	164	Wall of site XI (or 'forum') ...	326
Inscribed tile from	169	Section of west wall, etc.	327
Roman altar from VINDOLANA ...	162	General view of site XI... ..	319
Roman altar from Birrens	165	Capitals of columns	334, 340
Roman tablet at Jedburgh	167	Carved slab of a horse and horseman	344
Roman centurial stones from Cockmount hill, Chesters, Sewing-shields, Halton Chesters and Lanchester	168, 169	Architectural details ... 346, 347, 350	
Pilgrims' Gate, Newcastle	174	Coin of Allectus	363
Portrait of Richard Farrington ...	178	Altar from west granary	396
The Stephenson arms	181	<i>Fibulae</i>	401-403
The Farbridge arms	183	Anglian <i>fibulae</i> from	405
Portrait of Moses Aaron Richardson	197	Round brooches and studs from	406
Portrait of George Bouchier Richardson	198	Gold ring	408
Plan of fort on the Stanegate at Haltwhistle-burn	215	A 'caltrop,' etc.	409
Late Celtic enamelled <i>fibula</i> from the Tyne	285	Triangular arrowhead, etc. ...	410
Alnwick Castle:		Figured 'Samian' ware	411-415
The gatehouse from within	288	Castor ware	416, 417
The gatehouse from the barbican	291	Samian ware fluted dish	419
The portal of the gatehouse	292	An iron skid	423
The platform over the barbican	294	Bronze helmet cheekpiece	424
The moat before the gatehouse	299	Late Celtic dragonesque <i>fibula</i> from South Shields	394
The moat before the gatehouse,		Late Celtic brooch from Backworth	400

CONTRIBUTIONS OF PHOTOGRAPHS, ETC.

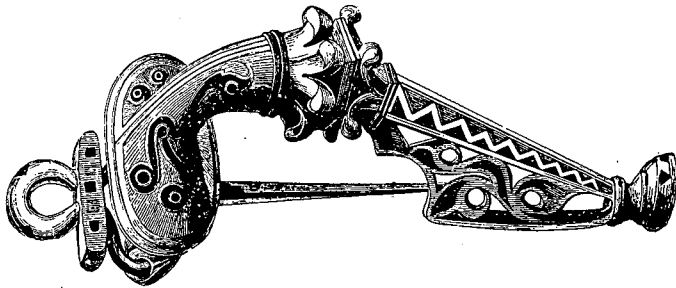
Thanks are due and given to the following :—

- Brewis, Mr. W. Parker, for photographs of seals, pp. 52 and 53.
 Clarke, Mr. H. F., for drawings of Bunny arms.
 Gibson, Mr. John Pattison, and Mr. F. Gerald Simpson, for photographs, etc., and largely contributing to the cost of the collotypes, etc., illustrating their papers on the *Aesica* altar, etc., and on Haltwhistle-burn camp.
 Knowles, Mr. W. H., for plans, etc.
 Northumberland, the Duke of, for the photographs, blocks and plates illustrating the paper on the barbican of Alnwick Castle.
 Northumberland Excavation Committee, for the collotype of Roman gold coins found at *Corstopitum*.
 Robson, Mr. John Stephenson, for the coloured plate of the Newcastle Joiners' Company's arms, etc.
 Scotland, Society of Antiquaries of, for loan of block on p. 165.
 Welford, Mr. Richard, for blocks of portraits on pp. 197 and 198.

The photographs of Haltwhistle-burn camp and of the *Aesica* altar, etc., are by Messrs. J. P. Gibson and F. G. Simpson, as are those illustrating their Haltwhistle burn camp report; of Alnwick Castle by Mr. J. Worsnop of Rothbury. Mr. Gibson also took the photographs reproduced for the *Corstopitum* report.

CORRECTIONS.

- Page 36, line 1 of note, for 'Portland' read 'Portsmouth.'
 ,, 102, lines 4, for 'Walton' read 'Whalton'; and 10, for 'Toson' read 'Tosson.'
 ,, 138, line 16, for 'Mich.' read 'Nicholas.'
 ,, 147 *et seq.*, headlines, for 'Bunney' read 'Bunny.'



RISINGHAM BROOCH (see p. 401).