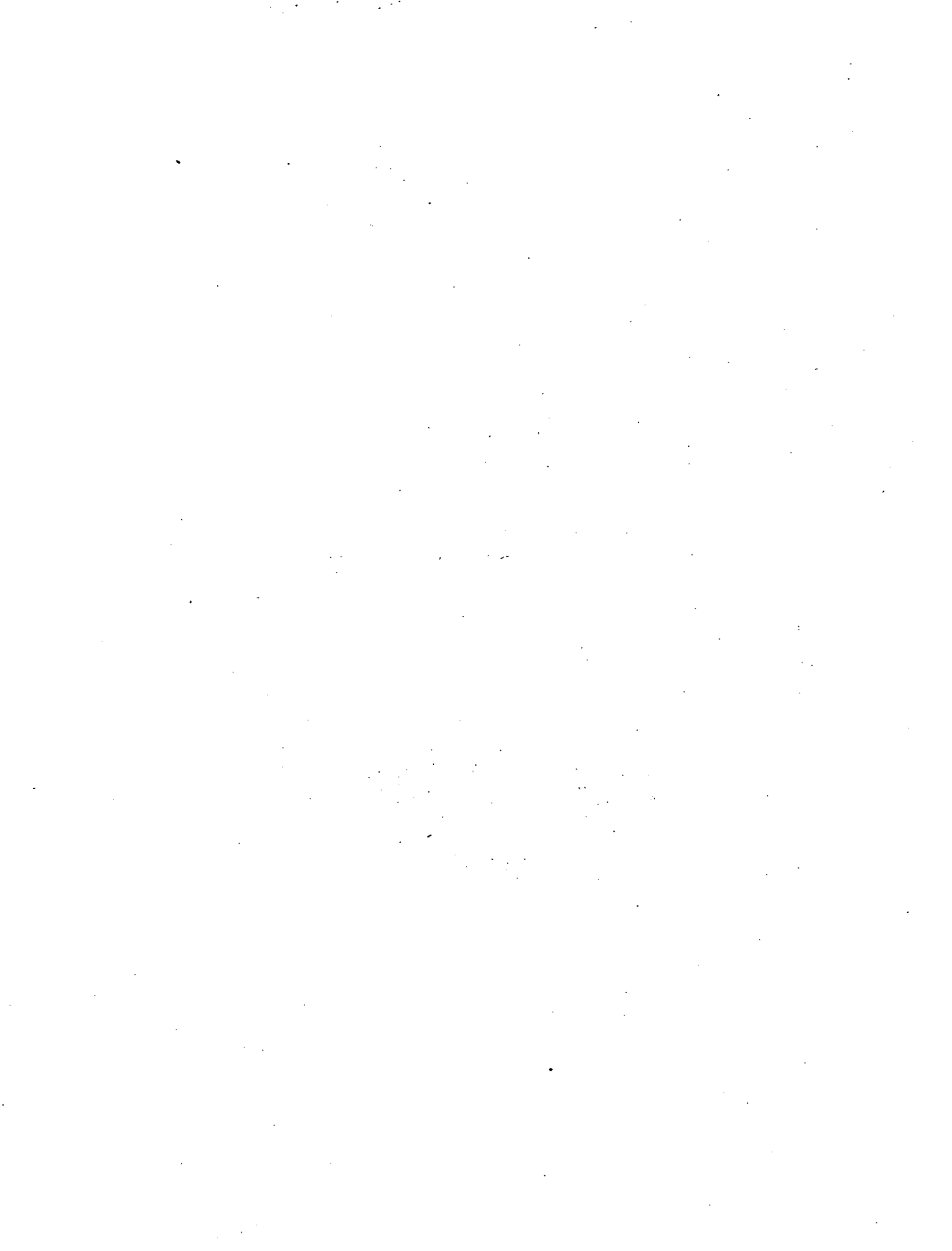




ARCHAEOLOGIA AELIANA.

THIRD SERIES, VOLUME VI.



ARCHAEOLOGIA AELIANA:

OR

MISCELLANEOUS TRACTS
RELATING TO ANTIQUITY.

PUBLISHED BY THE
SOCIETY OF ANTIQUARIES OF NEWCASTLE UPON TYNE

AND

EDITED BY R. BLAIR.

THIRD SERIES, VOLUME VI.



NEWCASTLE-UPON-TYNE:
ANDREW REID & COMPANY, LTD., PRINTING COURT BUILDINGS, AKENSIDE HILL.

M.DCCCC.X.

GATESHEAD PUBLIC LIBRARY	
CLASS NO.	BOOK NO. 68196
CHECKED	DATE

NEWCASTLE-UPON-TYNE
ANDREW REID AND COMPANY, LIMITED, PRINTING COURT BUILDINGS,
AKENSIDE HILL.

CONTENTS.

	PAGE
List of plates and other illustrations	vi
Contributions of photographs, etc.	viii
Additions, corrections, etc.	viii
Annual report for 1909	ix
Treasurer's report and balance sheet	xiv, xv
Gifts to Museum	xviii
Gifts of books, etc.	xx
Council and Officers	xxii
Honorary Members	xxiii
Ordinary Members	xxiii
Societies exchanging publications	xxxiv
Statutes	xxxvi
I.—On the Medieval and Later Owners of Eslington. By J. Crawford Hodgson, M.A., F.S.A.	1
II.—A Pedigree of Widdrington of Cheeseburn Grange. By J. C. Hodgson	34
III.—Extracts from the De Banco Rolls relating to Northumberland: 1308 to 1558. By F. W. Dendy	41
IV.—The Armorial of Northumberland: an Index and an Ordinary. By C. Hunter Blair	89
V.—The Church of the Holy Cross, Wallsend, Northumberland. By W. H. Knowles, F.S.A.	191
VI.—CORSTOPITUM: Report of the Excavations of 1909. By R. H. Forster, M.A., F.S.A., and W. H. Knowles	205
VII.—Obituary Notice of the Rev. J. Walker, hon. canon of Newcastle and rector of Whalton, Northumberland. By J. Crawford Hodgson	273
Index	275
List of Publications	301

PLATES.

I.—Octagon Towers, Alnwick Castle facing page	89
II.—Coats of arms derived from the Baliol arms	100
III.—Gateway of Bothal Castle showing Bertram shields	102
IV.—Coats of arms derived from the Fitz Roger arms	112
V.—Coats of arms derived from the Grey arms	114
VI.—Gateway of Lumley Castle showing the Lumley arms	120
VII.—Coats of arms derived from the Umfreville arms	132
VIII-XI.—Northumbrian seals	188
XII.—Romano-British pottery in Guildhall Museum	226
XIII.—Plan of the Excavations at Corstopitum	246
XIV.—Figured Samian ware discovered at Corstopitum	270
XV.—Portrait with autograph of the Rev. John Walker	274

OTHER ILLUSTRATIONS.

	PAGE
Alnwick, seal of	136
Bertram, Sir Robert, seal of	182
Bertram, Sir Roger, seal of	182
Berwick, seal of	136
Corbridge, seal of	136
CORSTOPITUM :	
Fig. 1.—Porticoes of south front of granaries	204
Fig. 2.—Plan, etc., of portico to east granary	210
Fig. 3.— Do. do. west granary	213
Fig. 4.—Site XIV	221
Fig. 5.—Plan and section, site XIV	223
Fig. 6.—Romano-British god (?)	225
Fig. 7.—Sculptured panel	231
Fig. 8.—Plan and section, site XVII	234
Fig. 9.—Site XVII, showing apse on north side	236
Fig. 10.—Furnace near site XVII	240
Fig. 11.—Sections of ditch indicated on general plan	245
Fig. 12.—Figure of Mercury	247
Fig. 12A.—Greco-Asiatic medal of Septimius Severus	255
Fig. 15.—' Pig ' of iron	267

OTHER ILLUSTRATIONS—*continued.*

	PAGE
Eure, Hugh de, seal of	184
Houghton, Henry de, seal of	183
Lumley, Sir Ralph de, seal of	180
Neville, John, lord, seal of	180
Newcastle and Carlisle Railway ticket	xxi
Northumberland, seals of towns in	136
Railway ticket, old, of paper, xxi; of brass	300
Roman pottery from South Shields	xlii
Seals of towns in Northumberland	136
SEALS:	
Sir Robert Bertram	182
Sir Roger Bertram	182
Hugh de Eure	184
Henry de Houghton	183
Sir Ralph Lumley	180
John, lord Neville	180
Sir Gilbert de Umfraville	187
Sir Ingram de Umfraville	182
John Vesci	176
John de Widdrington	184
Shields, South, Roman pottery from	xliii
Umfraville, Gilbert de, earl of Angus, seal of	187
,, Ingram de, seal of	182
Vesci, John, seal of	176
Wallsend, Holy Cross church	190
,, ,, plan of	195
,, ,, south doorway	197, 198
,, ,, font	200
,, ,, communion plate	202
Widdrington, John de, seal of	184

CONTRIBUTIONS OF PHOTOGRAPHS, ETC.

The following are thanked :—

Brewis, W. Parker, F.S.A., for photographs of illustrations facing pp. 89, 100, 120.

Haverfield, Professor F., for loan of block facing p. 226.

Heatley, W. Robertson, for plate x.

Hunter, Edward, for plates viii and ix.

Knowles, W. H., F.S.A., for photographs, etc., illustrating his paper on Wallsend church.

Welford, Richard, M.A., V.P., for plate xi.

An unknown donor : for the four coloured plates of shields of arms facing pp. 100, 112, 114 and 132.

ADDITIONS, CORRECTIONS, ETC.

Page 42, end of third paragraph, beginning 'These extracts,' is not correct, as only the extracts copied are in books beginning volume vii.

Page 50, line 23, for 'for' read 'from.'

Page 74, line 13, for 'le' read 'de.'

Page 99, Amundeville, Robert de. X. describes him as of 'Wotton in Wardale,' and blasons for him *Vair three pales gules*.

Page 108, Dalden. The birds should be blazoned *popinjays* not *martlets*. The seal of Jordan of Dalden (D.T. Misc. Charts, 6880) shows four birds, but they do not seem to be popinjays. Are they daws in canting allusion to the name?

Page 118, Knut, Richard. This seal is ascribed to him in error, it is that of Nicholas Knut of Keepehich; the legend on the seal is . . . LLVM . . . OLAI KNOWT. The changes appear to be derived from the Errington arms. The writer has not been able to find the arms of Richard Knut.

W/1
2/1

ERRATA.

Page viii, line 3 from bottom, for 'Keepnich' read 'Keepwick.'

