



Gateshead Public Library.

REFERENCE DEPARTMENT.

Accession No. 1861 Class No. 942.821
913

THIS Book belongs to the Reference Department of the Gateshead Public Library, and must be returned into the hands of the Librarian or his Assistants.

On no pretence whatever can it be taken out of this room.

H. F. FALLAW,

Chairman.

c 27/371.

NOV 1933





ARCHAEOLOGIA AELIANA.

THIRD SERIES, VOLUME XV.



PUBLIC LIBRARY
GATE HEAD

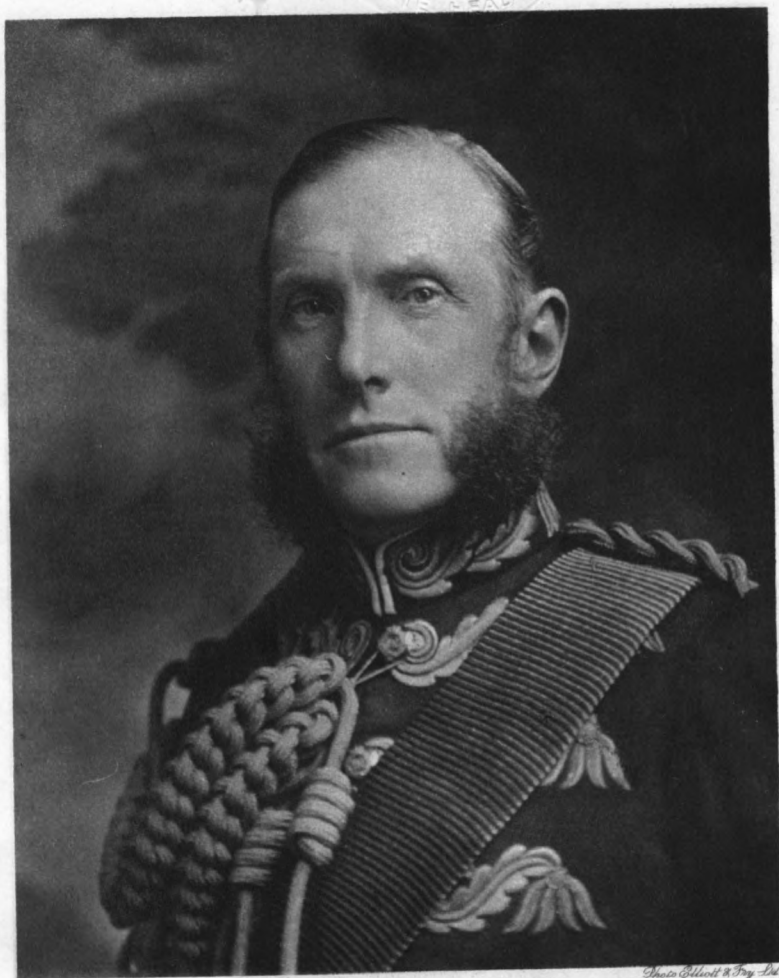


Photo Elliott & Fry Ltd.

HENRY GEORGE PERCY
SEVENTH DUKE OF NORTHUMBERLAND, KG, F.S.A.
PRESIDENT OF THE SOCIETY.

LIBRARY
OF THE
BANK OF AMERICA



ARCHAEOLOGIA AELIANA :

OR

MISCELLANEOUS TRACTS
RELATING TO ANTIQUITY.

PUBLISHED BY THE
SOCIETY OF ANTIQUARIES OF NEWCASTLE UPON TYNE.

AND

EDITED BY R. BLAIR.

THIRD SERIES, VOLUME XV.

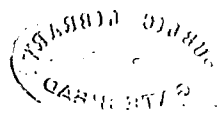


KENDAL :

PRINTED FOR THE SOCIETY BY TITUS WILSON & SON.

M.DCCCC.XVIII.

Collated by	M. J.
Stock No.	1861
Vendor	
Price	
Date	11. 6. 19
Bound	
Replaced	
Book No.	942.821
Class No.	913



2942.821
913

KENDAL :
TITUS WILSON AND SON,
PRINTERS AND PUBLISHERS.

CONTENTS.

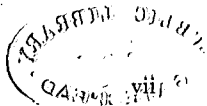
	PAGE.
List of plates and other illustrations	vi
Contributions of photographs, etc.	vii
Additions and corrections	vii
Annual Report for 1917	ix
Treasurer's report and balance sheet	xii
Librarian's report	xvii
Council and Officers	xviii
Honorary and Ordinary Members	xix
Societies exchanging publications	xxviii
I.—Memoir of the Rev. William Greenwell, D.C.L., F.R.S., F.S.A., a vice-president. By J. Crawford Hodgson, M.A., V.P.	I
II.—Early Northumbrian Christianity and the Altars to the 'Di Veteres.' By Prof. F. Haverfield, D.Litt., LL.D., F.S.A., F.B.A., V.P.	22
III.—Thomas Cradock's Estate. By the Rev. D. S. Boutflower, M.A., Master of Sherburn Hospital, co. Durham	44
IV.—Remains of John Horsley, the historian. By J. C. Hodgson, V.—Unpublished Letters of Richard Dawes, Master of the Newcastle Grammar School, &c. By J. C. Hodgson	57
VI.—George Tate, the historian of Alnwick. By J. C. Hodgson	100
VII.—Obituary Notices of the Seventh Duke of Northumberland. (1) By J. C. Hodgson	109
(2) 'An Antiquary's Memories.' By Howard Pease	112
VIII.—Catalogue of Durham Seals, from a Manuscript of the Rev. W. Greenwell, D.C.L., &c., collated and annotated by C. H. H. Blair (continued from vol. xiv)	115
Index	205
List of Publications	223

PLATES.

Portrait of Henry George, seventh duke of Northumberland, K.G., F.S.A., patron and president of the society	Frontispiece
I.—Two early Christian Inscriptions, Kirkmadrine	facing page 26
II-VII.—Durham Seals	204

OTHER ILLUSTRATIONS.

	PAGE
Seal of Southwick Priory, Sussex	viii
Portraits of the Rev. W. Greenwell, D.C.L., &c.	xxx and 20
Roman inscriptions:	
From Risingham	28
'Brigomaglos' stone	30
Silver bowl found near Carlisle	31
Tombstone from Carlisle	32
Altars to the 'Di Veteres'	39 and 41
Tynemouth Priory, an imaginary restoration	114
A Durham Stile, Coatham-Mundeville	222



CONTRIBUTIONS OF PHOTOGRAPHS, ETC.

Thanks are given to the following :

The Duke of Northumberland, for the photograph and plate (frontispiece) of the late duke.

Mr. C. H. H. Blair, F.S.A., for photographs of seals, illustrating 'Durham Seals'; and for photographs of seal on p. viii.

Prof. F. Haverfield, F.S.A., &c., for blocks facing p. 26.

Mr. R. B. Hepple, LL.D., for loan of block of Tynemouth priory restored, on page 114.

Cumberland and Westmorland Antiquarian and Archaeological Society for loan of block on p. 32.

Contributors of plates of 'Durham Seals.'

ADDITIONS AND CORRECTIONS.

Page 12, line 14, for '1893' read '1891.'

„ 27, line 13, insert '25.'

„ 48, line 11, for 'Anthiny,' read 'Anthony.'

„ 20. Greenwell Pedigree facing :

The Rev. Francis Smales, clerk, of the parish of Middleham, and Jane Lanchester were married by licence 6 December, 1756, at Manfield. It is presumed that she was grand-daughter of Henry Lanchester of St. John's College, Cambridge, B.A. 1690, and subsequently vicar of Manfield. The vicar's youngest son, Thomas Lanchester of Lancaster, who may be identified with the father of Mrs. Smales was baptized at Manfield, 12 April, 1692.

SEAL OF SOUTHWICK PRIORY, SUSSEX.



1. Obverse : SIGILLUM : ECCLESIE : SANCTE : MARIE : DE : SUWIKIA
2. Reverse : SIT. PRO : SUWIKIA : MEDIATRIX : VIRGO : PVDICA : ET :
PAX : ANGELICA : SIT : NOBIS : SEMPER : AMICA

For an account of this very interesting seal see *Proc. Soc. Antiq., Lond.*,
2 ser., XXIX, p. 103 *et seq.*, and *Archaeologia* vol. XXIII, pages 374-379.

From photographs by Mr. C. H. H. Blair, F.S.A., of an impression from the
ancient matrix.