

### III.—SEALS OF NORTHUMBERLAND AND DURHAM.

BY C. H. HUNTER BLAIR, M.A., F.S.A.

(Continued from Vol. xx, p. 186.)

544. MOWBRAY, THOMAS P.R.O. Exchq. Treas. Misc. 46/1, A.D. 1388.  
Red, round, imperfect, armorial, a lion rampant. The shield is  
couched and above it is a mantled helm with cap of estate and  
crest of a standing lion.

Legend gone.

Earl marshal of England and earl of Nottingham. Styled here warden of  
the East Marches and guardian of Berwick upon Tweed. He later (A.D.  
1389) adopted the three leopards of England with a label of five points.  
See seal B.M. Seal Cat. No. 12,007; A.D. 1396. Also an equestrian seal  
(Cott. MS. Julius C. vii) of 1389 giving the three leopards and the lion  
crest crowned with a label of five points.

545. MULTON, THOMAS OF P.R.O. Baron's Letter A22, A.D. 1301.  
Green, round, 40 mm., equestrian, the knight in mail, loose flowing  
surcoat, cylindrical helm with fan crest. His horse wears a loose  
trapping and a fan crest. Shield and trappings bear his arms,  
three bars.

.SIGILLVM.THOME.DE.MOVLTON.

Facsimile Foster's *Feudal Lords and Their Seals*, pl. p. 85. The blason is  
*de argent o treis barres de goulys* (Poem of Caerlaverock). See Hodgson  
II, iii, 364, 365; *Surtees* III, p. 70.

546. MUSCAMP, ROBERT OF *Liber de Melros*, pl. x, No. 2, circa, A.D.  
1180/90.

Round, 48 mm., device five flies (*muscae*) one at the centre with  
two above and two beneath.

† SIGILL' ROBERTI.DE.MVSCAMPO.

Document *op. cit.* No. N, 232. The seal is that of Robert who died A.D.  
1191. (Pedigree N.C.H. XI, 308.)

547. MUSCAMP, ROBERT OF *Liber de Melros*, pl. x, No. 3.  
Round, 36 mm., device a lion passant to the dexter.

† S' ROBERTI.MVSCHAVNS.

This is probably the seal of the son of above Robert. He died about A.D.  
1250. (Pedigree *op. cit.* 308.)

548. MUSGRAVE, THOMAS OF P.R.O. Exchq. K.R. 73/1, No. 19, A.D.  
1373.

Red, round, 23 mm., armorial, six rings. The shield is couched;  
above it is a full faced mantled helm with crest of two arms and  
hands holding up a ring between them. The shield is placed  
amidst tracery. (Seals pl. IV.)

s'tbome. de. musgrave.

Indenture relating to custody of Berwick upon Tweed. See also *Hodgson* II, ii, note p. 116. Shield blasoned for him in *Powell's* roll—*azure six rings gold*.

549. NEILE, RICHARD (BISHOP OF DURHAM) Waterford, A.D. 1624.  
Red, oval, 23×20 mm., armorial, a cross between four lions rampant (See of Durham) impaling quarterly I paly on a fess a crescent, II three demi lions rampant in an engrailed border IV, a cross engrailed between four roundels.

Bishop of Durham 1617-1628. Pedigree *Hodgson* II, ii, 297. Life *Surtees* I, LXXXVIII. The first quarter of the impalement is for Neile blasoned *paly silver and gules on a fess gules a crescent silver*. The remaining quarters I cannot account for. His great seal is described *Proc. Socy. Antq. N.C.*, N.S. x, 306.

550. NEASHAM, PRIORESS OF P.R.O. Anc. Deeds, B2736, A.D. 1499.  
Red, oval 20×12 mm., crowned **M**

No legend.

A convent of Benedictine nuns, on the Tees about a mile below Hurworth. Founded in the reign of Henry II by 'Emma de Teisa.'

551. NEVILLE, ALEXANDER B.M. Cat. 12,089.. *Surtees* Pl. ix, No. 4  
c. A.D. 1367.

Red, round, 35 mm., armorial a saltire, differenced by a crescent. The shield and saltire are diapered. The shield hangs from a tree planted on a mount. It is supported by two muzzled bears chained to the tree. (Seals, plate iv.)

*sigillu' alexandri de neville.*

He was lord of Raskelf (North Riding, Yorks) and younger brother of Ralph Neville, lord of Raby, who died A.D. 1367. Pedigree *Surtees* IV, 158. The seal is I think in Durham Treasury but the reference is lost.

552. NEVILLE, ALEXANDER P.R.O. Anc. Deeds, B3,606, A.D. 1391.  
Red, round, very imperfect, armorial, a saltire. The shield is couched and above it is a helm upon which is the crest of a bull's head; the neck with the hair on forming the mantling. The shield is in a quatrefoil and in the dexter side lobe is an angel supporting it. The sinister side is destroyed.

..... *neville.*

Styled knight of Co. York.

553. NEVILLE, ALICE Cast B.M. Seal Cat. 12,086.  
Round, 23 mm., armorial, a saltire, the shield is within tracery in which are four roundels charged, I and IV a fret; II and III barry three chaplets, between each of these in the tracery are three rings. (Seals Plate iv.)

SIGILLVM AL . . . DE NEVILLE.

She was the daughter of Hugh, lord Audley (died 1325/26). Her first husband was Ralph, lord Greystock, after his death she married Ralph, lord Neville of Raby (died 1367). She died 1374/75. The shield is that of her last husband Ralph Neville, the chaplets are those of her first husband Ralph FitzWilliam afterwards Greystock. (See No. 302) the fret is that of Audley, *gules a fret gold* derived from the shield of Verdon, their early overlords, and differenced by reversing the colours. (*Surtees* IV, 158, *Clay*, 96; *Comp. Peer*, I, 347).

554. NEVILLE, CECILY                      B.M. Add. Chart. 15,478; A.D. 1477. Seal  
Cat. 12,093.

Red, round, 80 mm., armorial, an eagle with raised wings, a coronet round its neck, bearing on its breast a shield of arms quarterly France and England impaling Neville; the dexter supporter an antelope with coronet round its neck, the sinister a lion. On each side of the shield is a rose branch. (Seals, plate IV.)

*sigillu' dn'e cecille . ur'is . veri . hered . anglie . et . francie .  
et dn'i . bib'nie . matris . reg . edwardi . quarti .*

She was the daughter of Ralph Neville of Raby, first earl of Westmoreland by his second wife Joan Beaufort. She married Richard duke of York and was the mother of Edward IV and Richard III. (*Surtees* IV, 159; *Clay*, 150; Seal engraved *Sandford* 374.)

555. NEVILLE, EUFEMIE                      B.M. Harl. Chart. 51E. 39; A.D. 1369;  
Seal Cat. 11,436.

Red, round, 29 mm., armorial, four shields in cross, the points to the centre; I, a saltire (Neville); II, checky a fess (Clifford); III, six lions rampant crowned (Heslarton); IV, three lucas in pale and a label (Lucy) all within a richly chased quatrefoil.

*: sigillu' : eufemie : de : lucy .*

She was the daughter of Ralph, third lord Neville of Raby. She married firstly Reynold Lucy a younger son of Thomas, second lord Lucy of Cockermouth; secondly Robert, fourth lord Clifford; thirdly Sir Walter Heslarton. (*Surtees* IV, 157; *Clay*, 146; seal engraved *Drummond* II, p. 6).

556. NEVILLE, GEORGE                      Deed at Raby; n.d.  
Octagonal signet surrounded by a twisted straw, a double headed eagle displayed.

*loialment.*

He was the third son of Ralph first earl of Westmorland by his second wife Joan Beaufort, he died 1480/81.

557. NEVILLE, HENRY                      B.M. Harl. 2044, Fo. 127; n.d.  
Round, 42 mm., device an ancient ship with three masts.

‡ SIGILL' HENRICI DE NEVILLA

Styled son of Geoffrey, seal attached to a grant to Newhouse Abbey, Lincolnshire. The device is canting O.F. *Nef*. a ship. In *Grimaldi's* roll '*Geffray de Neville port d'or ove une nef maste et phane de*



*sable* (Col. Top. et Gen. II, 326). This Henry is most probably the son of that Geoffrey who founded Topholme Priory, Co. Lincoln and who married Emma, daughter and heiress of Bertram of Bulmer lord of Brancepeth. Henry died A.D. 1227 (*Clay*, 144). The shield of arms in *Grimaldi's* roll is for a later Geoffrey.

558. NEVILLE, HENRY B.M. Harl. 2044, Fo. 124<sup>b</sup>; n.d.  
Round, 39 mm., a lion fighting with a serpent.

No legend given:

Styled son of Hugh of Neville, document a grant to the abbot of Newhouse.

559. NEVILLE, HUGH B.M. Harl. 2044, Fo. 127<sup>r</sup>; n.d.  
Round, 42 mm., knight in main hauberk and coif with drawn sword fighting a ramping lion.

✠ SIGILL' HVGONIS.DE.NEVILLA.

A seal of early 13th century date. Deed given at London.

560. NEVILLE, HUGH B.M. Harl. 2044, Fo. 127<sup>r</sup>; n.d.  
Round, 30 mm., an eagle with upraised wings, facing to the sinister.

✠ : SIGILLVM : HVGONIS : DE : NEVILL'.

Grant to Newhouse Abbey. In another deed a grant to St. Mary and St. Edmund of Elsham, he is styled of 'Bekebi.' (*Ibid.*, Fo. 124.)

561. NEVILLE, HUGH B.M. Harl. 2044, Fo. 127<sup>r</sup>; n.d.  
Shield shaped, on a chief three roundels.

✠ : S : HVGONIS : DE : NEOVILLA.

Styled son of Henry Neville of Hales; grant to Newhouse Abbey.

562. NEVILLE, JOAN Longstaffe MS. Collections. A.D. 1435.  
Red, round signet, an eagle with raised wings, around it—

non othere.

Wax protected by a straw. Joan Beaufort daughter of John of Gaunt and second wife of Ralph Neville first earl of Westmoreland. (*Surtees* IV, 158; *Clay*, 147.)

563. NEVILLE, JOAN B.M. Seal Cat. 12,111, c. A.D. 1405.  
Round, 39 mm., imperfect, armorial, a saltire (Neville) impaling France (ancient) and England quarterly within a border compony (Beaufort). The field of shield is diapered; it is placed amidst tracery.

..... miti.....

Same person as No. 562.

564. NEVILLE, JOHN *Raine* App. 70, No. 371. c. A.D. 1240.  
Green, round, a falcon.

✠ S' IOH'IS-DE-NEVILE.

Document printed *op. cit.*

565. NEVILLE, JOHN Dur. Treas. Ref. lost.  
Round, 31 mm., device a boar's head, behind it the branches of a tree.  
✦ SIGILL' IOHANNIS DE NEVILLE :  
Styled John son of Roger Neville, grant to Coldingham.
566. NEVILLE, JOHN B.M. Harl. 2044, Fo. 125<sup>v</sup>.  
Round, 30 mm., a sexfoiled flower.  
✦ SIGILL' IOH'IS FIL' : PETRI : DE : NEVILLA  
Styled of Ullesley, document a grant to Newhouse Abbey.
567. NEVILLE, JOHN Melrose Charters., c. A.D. 1358. *Laing Seals*  
1,635. B.M. Seal Cat. 12,122.  
Round, 30 mm., armorial, a saltire and a label of three points; the shield in the centre of tracery.  
S' . . . . . IOHANNI . . . . . EVILE  
Son of Ralph second lord Neville of Raby; died A.D. 1388. Shield blasoned in *Powell's roll* (No. 187) *gules a saltire silver, a label of three points azure.*
568. NEVILLE, JOHN B.M. Seal Cat. 12,129. Cast.  
Round, 48 mm., armorial, a saltire and a fleur de lis for difference.  
The shield is couched; above it is a mantled helm with bull's head crest also charged with a fleur de lis. Field floriated.  
Legend on a scroll—  
sigillum jobannis. . . . .  
Probably the seal of Sir John Neville slain at Towton A.D. 1461. Younger brother of Ralph the second earl.
569. NEVILLE, JOHN Hodgson's MSS. I, p. 276; A.D. 1466. B.M.  
Seal Cat. 12,129.  
Round, 62 mm., armorial, quarterly I and IV, quarterly 1 and 4, three fusils in fess (Montagu) 2 and 3 an eagle displayed (Monthermer) II and III a saltire and a label of three points (Neville). An escutcheon of pretence I, on a canton a rose (Bradstone) II, a cross engrailed (Inglethorpe) III, a fess between three leopards' faces (Pole) IV, a fess of three fusils (Montagu). The shield is couched and surmounted by a helmet with mantling and coronet out of which rises the crest of a demi griffon with expanded wings. Supporters two winged griffons. The legend has a rose between each word. (Seals, plate iv.)  
sigillum iobis nevill dni de montagu gardiani estmarche.  
anglie versus scocie.  
Styled earl of Northumberland, lord Montagu, guardian of the East Marches of England towards Scotland. Document dated at Alnwick, 31 Jan., 1466. He was the third son of Richard Neville earl of Salisbury and grandson of Ralph first earl of Westmoreland and his second wife

Joan Beaufort. He was killed at Barnet 14 April, 1471 (*Doyle* II, 650, *Clay*, 151, *Surtees*, IV, 159).

570. NEVILLE, MARGARET P.R.O. L.S. 68; A.D. 1315.  
Brown, pointed oval, full faced standing figure of Margaret with wimple on her head, her robe blasoned with three lions passant, and an outer mantle. Her left hand holds her mantle girdle, her right holds its edge. On each side is a shield of arms hanging from a bush, the dexter three lions passant, the sinister a lion rampant.  
... MARGARETE-DE-NEVYLE  
Styled wife of John Neville, the deed is a grant to her son Hugh. She is of the Essex family and perhaps should not be included here. See *Drummond*, II, 33.
571. NEVILLE, PETER B.M. Harl. 2044, Fo. 125, n.d.  
Round, 43 mm., an ostrich walking to the dexter.  
✦ SIGILLVM·PETRI·DE·NESVILLA·  
Styled son of Richard Neville; deed a grant to Newhouse Abbey.
572. NEVILLE, RANULPH P.R.O. Baron's Letter No. A54.  
A.D. 1301.  
Green, round, 23 mm., armorial a saltire.  
✦ S'·RANULFI : DE : NEVILE  
Illustrated in facsimile Foster's '*Some Feudal Lords and Their Seals*,' pl. p. 129.
- 572A. NEVILLE, RANULPH B.M. Harl. 112B. 49; A.D. 1318. Seal  
Cat. 12, 143.  
Red, round, 30 mm., armorial, a saltire. The shield hangs by its strap from a tree of three branches; at each side of it is a wyvern.  
\* SIGILLVM : RANVLFI : DE : NEVELLE.  
Both these seals are those of the first lord Neville of Raby, died 1331, buried at Coverham Abbey. These seals shew that his name was Ranulf not Ralph as in the pedigrees.
573. NEVILLE, RALPH P.R.O. Anc. Deeds; W.S. 369. A.D. 1341.  
Red, round, 30 mm., armorial a saltire. The shield is couched and placed in a richly cusped circle of tracery. It is surmounted by a mantled helm with flowing scarf and upon it the crest of a bull's head. Issuing from the dexter side of the field is an arm and hand holding a spear with a triangular pennon, the Neville saltire. (Seals, plate IV.)  
✦ SIGILLVM : RADVLPHI : DE NEVILLE.
574. NEVILLE, RALPH P.R.O. Anc. Deeds; B.S. 43. A.D. 1355.  
Red, round, 23 mm., armorial, a saltire, the field is diapered and above the shield is a mantled helm with the crest a bush of feathers.  
x S' RADVLPHI : DE : NEVILE

These (Nos. 573/574) are apparently two different seals of the same man Ralph, second lord Neville of Raby who died A.D. 1367. (*Surtees*, iv, 158, *Clay*, 145.)

575. NEVILLE, RALPH P.R.O. Anc. Deeds; R.S. 101. A.D. 1359.  
Red, round, 31 mm., armorial, a saltire differenced by a rose. The shield is in a quatrefoil and above it is a mantled helm with bull's head crest.

\* SIGILL . . . . DULPHI . . . . E

Probably the second son of the above Ralph, of Cundall in Richmondshire. References as above.

576. NEVILLE, RALPH P.R.O.; B.S. 269. A.D. 1391.  
Red, round, imperfect, armorial, a saltire; the shield is couched and finely diapered, above it is the bull's head crest with the skin of his neck continued over the helm to form the mantling. The helm is supported by a collared greyhound on each side.

: s : radulphi : de : neville

Ralph fourth lord Neville of Raby created earl of Westmoreland 29 Sept., 1397, died 1425.

577. NEVILLE, RALPH Dur. Treas. 1-1 Spec. 38, 81. A.D. 1402  
and 1422.

Red, round, imperfect, 58 mm., armorial, a saltire; the shield is couched and above it is a helm with dagged mantling and cap of estate upon which is the bull's head crest. At each side sitting on a mount with daisies and trefoils is a collared greyhound supporting the helm. Above each of them is a large black letter **b**. The whole within tracery. (Seals, plate iv.)

sigillum : radulphi : com . . . . de : wes . . . landie

Same man as above but after his creation as first earl of Westmoreland. This seal is No. 8 on plate 8 *Surtees Durham*.

578. NEVILLE, RALPH P.R.O.; R.S. 389. A.D. 1439.  
Red, round, 52 mm., imperfect, armorial, a saltire, the field and charge diapered. Shield is couched and above it on a mantled and coroneted helm is the bull's head crest. On each side is a greyhound supporting the helm—Legend on a scroll—

sigillum : radulphi . . . . . ande

*Counterseal*: red, round, signet, 13 mm., a bull's head in a fence of hurdles with the motto

do not grais

Styled earl of Westmorland, lord Neville. He was the second earl, son of Sir John Neville and grandson of the preceding (No. 577) his wife was Elizabeth, daughter of Henry lord Percy (Hotspur), he died A.D. 1484. Obverse of seal illustrated *Surtees*, pl. 8, No. 7.

579. NEVILLE, RICHARD B.M. Harl. Chart. 54C. 15. A.D. 1430.  
Red, round, imperfect, armorial a saltire and a label compony of three points. The field is diapered with foliage. The shield is couched and above it is a mantled helm (the crest destroyed) at the sides of the helm are the letters **rn**.  
The legend on a scroll.

..... neville: militis:

He was the eldest son of Ralph first earl of Westmoreland by his second wife Joan Beaufort. He was created earl of Salisbury A.D. 1442, married Alice daughter and heiress of Thomas Montagu fourth earl of Salisbury. He was beheaded after the battle of Wakefield, A.D. 1460. (*Doyle*, III, 243; *Clay*, 150.)

580. NEVILLE, ROBERT, BISHOP OF DURHAM, Privy seal, see No. 248 in this catalogue.
581. NEVILLE, ROBERT *Drummond* II, 4; c. A.D. 1279.  
Round, 38 mm., armorial a saltire.

✠ SIGIL . . . OBVRTI DE NOVILLA

Lord of Raby and Brancepeth, governor of Wark and Norham castles, married Ida widow of Roger Bertram, died 1282 (*Surtees* IV, 158; *Clay*, 144). *Robert de Nevill de goules ou ung saltier dargent* (Henry III roll).

582. NEVILLE, ROBERT *Drummond* II, p. 4, n.d.  
Oval, 29×24 mm., ancient gem a bull.  
✠ ROBERTI: DE: NEVILE.

Same man as preceding, probably his privy seal.

583. NEVILLE, THOMAS Cast B.M. Seal Cat. 12, 156; c. A.D. 1314.  
Round, 28 mm., armorial, a saltire ermine; shield placed in fine tracery.

✠ SIGILLVM ✠ THOME ✠ DE ✠ NEVILLE.

Roses between each word of the legend. I cannot trace him but he would appear to be a cadet of the Raby family.

584. NEVILLE, THOMAS *Surtees* pl. 8, No. 9.  
Round, 48 mm., armorial, a saltire charged with a cinquefoil for difference. Shield couched, above it a mantled helm with crest wreath and a bull's head also charged with a cinquefoil for difference. Legend on scroll.

sigillum: thome: neville: militis:

Probably the seal of Thomas Neville, lord Furnivall second son of Sir John Nevill lord Neville of Raby and his wife Maud, daughter of Henry, lord Percy of Alnwick. He was a distinguished soldier and died A.D. 1406/7. (*Clay*, 146; *Comp. Peer.* v, 776). Seal in Durham Treas reference lost.



585. NEVILLE, WILLIAM Cast at Black Gate from Trevelyan Charters.  
Round, 26 mm., armorial a saltire charged with a fleur de lis for difference. The shield is couched and above it is a mantled and coroneted helm from which issues the bull's head crest. The shield is placed in a quatrefoiled panel, in each of whose side lobes is a star. (Seals, plate iv.)  
\* sigill' wil . . . . neville. militis.  
A younger son of Ralph, second lord Neville of Raby and his wife Alice, daughter of Sir Hugh Audley. (*Clay*, 145; *Surtees*, iv, 159.)
586. NEWBURN, ROGER OF Morpeth No. 24; A.D. 1363.  
Brown, round, 27 mm., armorial, two bars over all a bend. Shield is placed in a traceried panel. (Seals, plate vi.)  
. . . . LL. . . . A . . . .  
See *Hodgson*, II, ii, 492.
587. NEWCASTLE UPON TYNE, ADMIRALTY COURT OF *Arch. Ael.*  
3rd Ser. XIX, p. 184.  
Illustration and description there given.
588. NEWCASTLE UPON TYNE, SHERIFF OF *Ibid.*, p. 177.
589. NEWCASTLE UPON TYNE, INCORPORATED COMPANIES OF  
*Ibid.*, 179 *et seq.*  
Illustrated plate facing *Ibid.*, p. 179.
- NEWCASTLE UPON TYNE, RELIGIOUS HOUSES AT
590. AUSTIN FRIARS P.R.O. Aug. Off. 160; A.D. 1538.  
Red, oval, a fragment only remaining, St. Augustine in pontificals standing.  
. . . . . TERE . O . . . . .  
See *Brand*, I, 344.
591. PRIORY OF ST. BARTHOLOMEW B.M. Add. Chart. 29,529,  
13th Cent.  
Green, oval, imperfect, 51×38 mm., St. Bartholomew, nimbed, standing blessing, a flaying knife in his left hand.  
✠ SIGILL . . . . BARTHOLOMEI. DE. NOVOCAST . . . . .
592. PRIORY OF ST. BARTHOLOMEW Cast. B.M. Cat. 3,683, 15th  
Cent.  
Oval, 61×38 mm., St. Bartholomew in pontificals, standing on a bracket, blessing, his left hand holding a flaying knife.  
sigillu. coe. moniali . . . bart'i. i. novocast' . . .  
A convent of Benedictine nuns. See *Brand*, I, 204 *et seq.* seal illustrated *ibid.*, pl. II, Seals No. 3; *Mon. Ang.* IV, 487.

593. MONASTERY OF THE BLACK FRIARS (DOMINICANS) P.R.O.  
 Aug. Off. 161; A.D. 1539.  
 Red, oval, imperfect, 48×? mm., Our Lady with Christ seated in a canopied niche of tabernacle work. Beneath, under an arch, is a friar, in hood and gown with staff and scrip, walking to the dexter.  
 † SIG . . . . CATO . . . . NOVICAST . . . . AM.  
 This seal is apparently of 14th century date. Illustrated *Brand*, pl. II, Seals, No. 9. See also *Brand* I, 122 *et seq.* *Mon. Angl.* VI, 1487.
594. MONASTERY OF GREY FRIARS (FRANCISCANS) P.R.O. Aug.  
 Off. 162; A.D. 1538/39.  
 Red, oval, 48×30 mm., Our Lady robed and crowned, with nimbus around her, standing within the horns of a crescent. Beneath is a shield of arms France and England quarterly.  
 † SIGILL . . . . TVS : MINOR . . . . CASTRO .  
*Brand*, I, 336 and *Ibid.* Seals pl. II, No. 8; *Mon. Angl.* VI, 1523.
595. HOSPITAL OF ST. MARY Cast B.M. Cat. 3,689, 16th Cent.  
 Oval, 45×39 mm., Our Lady with Christ standing, in a canopied niche of classical style, upon the crescent moon.  
 SIGILLV'.HOSPITAL.BETE.MARIE.  
 On the side columns of the niche—WESTE HOSPIT.  
 See *Brand*, I, 67.
596. HOSPITAL OF ST. MARY MAGDALENE Cast B.M. Cat. 3,687,  
 14th Cent.  
 Round, 26 mm., Our Lord holding his Calvary cross in his left hand, raising up St. Mary Magdalene with his right. The design is in tracery and the field strewn with slipped leaves.  
 \* SVSCIPE ~ ME ~ DOMINE.
597. HOSPITAL OF ST. MARY MAGDALENE Cast B.M. Cat. 3,688,  
 16th Cent.  
 Round, 29 mm., Our Lord holding St. Mary Magdalene by the left hand.  
 SIGIL'.HOSPIT'.S.M.MAGDALENAE.  
*Brand*, I, 425, *Mon. Angl.* VI, 772. *Brand* Seals pl. I, Nos. 5 and 12.
598. CHAPEL OF ST. THOMAS ON THE BRIDGE Cast. B.M. Cat.  
 3,691.  
 Pointed oval, 58×39 mm., St. Thomas of Canterbury in pontificals, standing on a bridge of rocks, blessing.  
 SIGILLV' . . . . . (legend reversed).
599. ST. MICHAEL ON THE WALL KNOLL (TRINITARIANS) P.R.O.  
 Aug. Off. 163; 1538/39.  
 Red, oval, very imperfect, Our Lord seated on a throne blessing with

both hands, on his right a cross paty; on his left a crescent enclosing a star.

. . . m . . . . : mich . . d . wall . . . .

*Brand* I, 61 and 400; *Mon. Angl.* 1563, 1575; *Durham Seals*, No. 3524.

600. MONASTERY OF THE CARMELITES (WHITE FRIARS) P.R.O.  
Aug. Off. 164; A.D. 1538/39.

Red, round, 40 mm., a triple towered castle gateway with open door, on each side of it is a shield of arms, England. Beneath is Our Lady with Christ seated, on each side of her is a kneeling monk supporting the towered gateway with their hands, field powdered with crosses.

\* S' . . . . DE. CARMELO.NOVICATR' SUP'TINAM.

*Brand* I, 60 *et seq.*; *Mon. Angl.* VI, 1575; *Brand*, Seals pl. II, No. 5.

- 600A. NORMANVILLE, JOHN OF B.M. Add. Ch. 16,790; A.D. 1345.  
Cat. 12,206.

Red, round, very imperfect, armorial, on a fess doubly cotised, three fleur de lis. Shield hangs from a mantled helm with fan crest.

. . . . . MANVI . . . .

*Hodgson* III, i, 212. The blason is silver on a fess doubly cotised gules, three fleurs de lis gules.

601. NORTHUMBERLAND, EARLS OF, see Percy.

602. NUNWICK, UDARD OF Hodgson MSS. I, p. 183.  
Oval, 52 × 32 mm., a boar (?) passant.

SIGILL' : VDARDI·DE·NVN·WICK·

Grant of land in Nunwick to Adam his son.

603. NUNWICK, WALDEVE OF Hodgson MSS. I, 185.  
Fragment only, an arrow.

. . . . DE. NV . . . . .

Styled son of Malcolm of Nunwick.

604. OGLE, JOHN OF Dods. 18, Fo. 23; A.D. 1316.  
Round, armorial, a fess between three crescents.

✠ SI' : IOH'IS : DE : OGGEL.

See *Hodgson* II, i, 380; *Ogle and Bothal* by Sir Henry Ogle, privately printed 1902. The blason is silver a fess between three crescents gules. *Arch. Ael.* 3rd Ser. VI, 123.

605. OGLE, JOHN OF Dods. 49, Fo. 66<sup>r</sup>; A.D. 1348.  
Round, armorial, crusilly three crescents.

✠ S· IOHA'NIS : DE : HOGILL.

Document *Hodgson* II, i, 389, 7f. Blason not known.

606. OGLE, RALPH B.M. Cott. Chart. xxvii, 30; A.D. 1567.  
Red, oval, signet, 18×15 mm., a coronet from which issues a bull's  
head with a molet on the neck for difference.  
Styled of Alnwick, Northumberland.

607. OGLE, RICHARD OF B.M. Chart. xxviii, 26; A.D. 1323.  
Green, round, 26 mm., a stag's head cabossed a cross between the  
horns.

\* S' RICHARDI . . . . GYL . . . .

Styled of Northumberland.

608. OGLE, ROBERT OF P.R.O. Anc. Deeds L97; c. A.D. 1340.  
Red, round, 22 mm., armorial a fess between three crescents. The  
shield is couched and above it on a conical helm with scarf  
mantling is a fan crest.

\* S'ROBERTI-DE-OGGLE

References as above. The shield is blasoned for him in Jenyn's Ordinary.

609. OGLE, ROBERT OF P.R.O.; K.R.  $\frac{68}{8}$  195; A.D. 1381.  
Red, round, imperfect, armorial a fess between three crescents.  
Shield in a panel of tracery.

Legend destroyed.

The son of above (No. 608). Document is an indenture between Sir  
Thomas Felton on the one part and Robert of Ogle and John of  
Fenwick on the other part. Fenwick's seal is destroyed.

610. OGLE, ROBERT OF Dods. 49, Fo. 64<sup>v</sup>; A.D. 1408.  
Round, armorial, quarterly I and IV a fess between three crescents,  
II and III an orle. 'Creste a dolphin'

Legend not given.

Styled chivaler, senior. He was the son of Robert Ogle and Helen  
Bertram daughter and heiress of Robert Bertram of Bothal. He died  
A.D. 1410. Buried in Hexham Priory where his tombstone yet remains.  
Pedigree *op. cit.* His son's seal is *Durham Seals*, No. 1917.

611. OGLE, ROBERT LORD Dods. 49, Fo. 64; A.D. 1467.  
Round, armorial, quarterly I and IV Ogle, II and III, Bertram.  
Shield couched and over it a mantled helm with crest of a Bull's  
head.

Legend not given.

Styled lord of Ogle and of 'Redysdale.'

612. OGLE, ROBERT LORD *Hodgson* II, i, 392, No. 12a; A.D. 1467.  
Signet, a bull's head.

Deed given at Bothal. He was the son of Robert Ogle and Maud,  
daughter of Sir Thomas Grey of Horton. Summoned to Parliament as  
a Baron 1461-1469. Died 1 Nov., 1469. Pedigree *op. cit.* *Comp. Peer.*  
(1st Ed.) VI, 116.

613. OGLE, ROBERT LORD Brummel; A.D. 1517.  
 Red, round, 64 mm., armorial, Quarterly I and IV Ogle, II and III  
 Bertram. Shield is couched and surmounted by a mantled helm  
 upon which is the crest of a stag's head.  
 sigillum × roberti . . . . domini . . . .  
*Counterseal*: a cartouche shaped signet, 16×10 mm., a dog biting  
 his tail.  
 Styled lord of Ogle and Bothal. References as above.
614. ORD, JOHN OF B.M. Add. Chart. 20,531; A.D. 1418.  
 Red, round, 26 mm., armorial, three salmon paleways. The shield  
 is couched and above it, on a mantled helm, is the crest of a  
 stag's head.  
 × . s × iobanne × de ord' : × :  
 Used by William Orde, son of John Orde of Newcastle upon Tyne.
615. PAMPEDON, ADAM OF University Coll. Oxford, P. Fasc. 12,  
 No. 5.  
 Round, apparently armorial but illegible.  
 S: AD . . . . PAMPDE . . . .
616. PAMPEDON, ADAM OF *Ibid.*, Fasc. 14, Nos. 1 and 10, No. 2.  
 Round, the Holy Lamb with banner.  
 . . . AGNVS . . . .  
 Styled son of John of Pampedon.
617. PAMPEDON, SYBIL OF *Ibid.*, Fasc. II, No. 1.  
 Green, oval, 23×18 mm., a double headed eagle displayed.  
 S. SIBILLE.DE.PAMPEDEN.  
 Pampedon (now Pandon) was united to Newcastle by charter of Edward  
 I, 20 Dec., 1299. Adam of Pampedon was bailiff of the town in A.D.  
 1282 (*Brand* II, 146,396). A John of Pampedon was bailiff in 1315, and  
 later. (*Ibid.*, p. 403.)
618. PARK, JOHN B.M. Harl. 1985, Fo. 276.  
 Round, armorial, three pierced molets.  
 SIGILLVM·IOHANNIS: DE: PARCO.  
 Document is a grant from Robert Lumley to John Park and Cicely his  
 wife.
619. PENRETH, JOHN OF Laing Charts. 20; A.D. 1316.  
 Round, an eagle displayed, upon its breast a shield of arms,  
 apparently charged with the instruments of the Passion.  
 Legend illegible.  
 Styled son of Adam of Starthorpe.
620. PERCY, ARNOLD Dods. 95, Fo. 39; c. A.D. 1306.  
 Round, armorial, a fess indented of five fusils.  
 Legend not given.

- Document printed *Guisboro' Chart*, 1, 270 (Surtees' Socy. publ. 86). He was of the Kildale family. He is styled Arnold Percy, knight, lord of Kildale, son and heir of the lord William Percy. Shield is blasoned for Walter Percy (of Kildale) in the *Charles* and *St. George* rolls *azure a fess of five fusils silver*.
621. PERCY, BEATRICE B.M. Harl. 245, Fo. 72<sup>v</sup>; A.D. 1317.  
Red, round, 19 mm., a kneeling female figure to whom an angel appears from the dexter.  
‡ S' BEAT'CIE : D' . . . . .
- Wife of Robert Percy knight (No. 638). Illustrated *Arch. Instit. Newcastle*, 1852. Vol. II, Seals No. 15.
622. PERCY, HENRY Soc. Ant. Lond. F32; n.d.  
Round, 48 mm., equestrian, knight in mail hauberk, round helm with nasal, sword and shield with central boss from which bars radiate to the border. Horse galloping to the sinister.  
‡ SIGILL' : HENRICI : DE : PERCI :
- Probably Henry, son of Agnes Percy and Josceline of Louvain, who died c. A.D. 1196. Illustrated *op. cit.* No. 8. See also *Arch. Ael. N.S.* IV, 105.
623. PERCY, HENRY P.R.O. Baron's Letter, A.D. 1301.  
Red, round, 70 mm., *Obverse*, equestrian, knight in mail and loose armless surcoat, conical visored helm with scarf mantling and fan crest, sword, and shield charged with a lion rampant. His horse wears an armorial trapping and has also a fan crest.  
‡ SIGILLVM·HENR[ICI]·DE·PERCI·
- Reverse*, same size armorial, in a fine eight lobed figure with cusplings and flowers, a shield of arms bearing a lion rampant.  
‡ SIGILLVM·HENR[ICI·DE]PERCI·
- The first baron by writ and the first lord of Alnwick, died 1315; he married Eleanor, daughter of the earl of Arundel his feudal lord. He was the first to use the lion rampant on his shield in place of the fusils in fess and it seems highly probable that he adopted it on his marriage with Eleanor FitzAlan. It is first blasoned for him in 'Falkirk' roll, A.D. 1298, *d'or ou ung leon d'azure*; the Fitzalans bore it gules and gold. His father's arms, blasoned in *Charles* roll, were *azure a fess engrailed of five fusils gold*. This seal is illustrated in facsimile Foster's *Feudal Lords and Their Seals*, pl. p. 43.
624. PERCY, HENRY B.M. Harl. 1985, Fo. 274; A.D. 1329.  
Oval (*sic*), armorial a lion rampant. The seal is couched and above it on a mantled helm is the crest of a lion's head rased.  
No legend given.
625. PERCY, HENRY P.R.O.; W.S. 369; A.D. 1341.  
Red, round, 32 mm., armorial, a lion rampant; the shield is couched in a cusped and traceried panel with stars and cinquefoils in the field. Above it is a visored helm with mantling on each side and with crest of a demi-lion rampant. (Seals, plate v.)  
‡ SIGILL'·HENRICI·DE·PERCY·SENIOR

Nos. 624/25 are for the same man, Henry second lord Percy of Alnwick, who succeeded his father in 1315, married Idoine, daughter of Robert, lord Clifford, died 26 Feb., 1351/52. (*Comp. Peer.* 1st ed. vi, 229.)

626. PERCY, HENRY Percy Seals, No. 13; A.D. 1355.  
Red, round, 30 mm., armorial a lion rampant, the shield is placed in a geometrical panel in the side lobes of which, at each side of the shield is a bird like a peacock.

\* SIGILLVM·HENRICI·DE·PERCI·

Illustrated *Arch. Instit. Newcastle* 1852, vol. II, No. 13. Son of above No. 625, married Mary, daughter of Henry, earl of Lancaster, died 16th June, 1368. References as above.

627. PERCY, HENRY P.R.O.; B.S. 422; A.D. 1358.  
Red, round, 45 mm., armorial, a lion rampant; shield hangs by its strap from a branch, on each side of it is a bird like a pheasant with its back towards the shield and holding a flower in its beak. (Seals, plate v.)

..... perci: quinti .

Same man as preceding; a very beautiful finely designed seal.

628. PERCY, HENRY Percy Seals No. 16; A.D. 1376.  
Red, round, imperfect, armorial, a lion rampant, the shield is placed in an eight foiled panel, the field finely diapered.

\* sigillum: ben . . . domini: de: . . . .

Son of the above, succeeded A.D. 1368, created earl of Northumberland 16 July, 1377, married firstly Margaret, daughter of Ralph lord Neville, secondly, about 1384, Maud, Countess of Angus, only daughter of Thomas, lord Lucy. He was killed at Bramham Moor, 19 Feb., 1407/8. (*Comp. Peer.* as above.) Seal illustrated *op. cit.* No. 16.

629. PERCY, HENRY (EARL OF NORTHUMBERLAND) P.R.O. Exch.  
Q.R.  $\frac{531}{29}$  c. A.D. 1380.

Red, round, 45 mm., the earl bareheaded and in body armour ornamented with crescents standing behind his shield of arms, a lion rampant. His right hand rests upon the hilt of his sheathed sword which stands upright at his side. His left hand rests upon the top of his shield and in the crook of the elbow leans the staff of a banner of arms—a lion rampant. The field is finely diapered.

× sigillum . bentici . de . perci

Same man as preceding, after his creation as earl. The seal is illustrated in facsimile *Genealogist* N.S. VII, frontispiece and p. 81. A later similar seal, after his marriage with the heiress of Lucy, is *Durham Seals*, No. 1963.

630. PERCY, HENRY (EARL OF NORTHUMBERLAND) *Arch. Ael.* N.S.  
IV, 179; and *Ibid.*, I, p. 36; A.D. 1395.

Red, round, 26 mm., a triple towered and battlemented castle placed within the horns of a crescent.

The earl's seal as sheriff. Illustrated *Arch. Instit. Newcastle, loc. cit.* p. 300.

631. PERCY, HENRY (HOTSPUR) P.R.O. Excheq. Treas. Receipt  
Misc. 4<sup>6</sup>/<sub>1</sub>; 1392/93.

Red, round, imperfect, armorial, a lion rampant and a label of three points.

..... erci .....

On dexter of shield is the Garter, on it

bonni . . . . qui . mal . . . . .

Styled eldest son of the earl of Northumberland. Document an indenture to undertake the guard of the East March and Berwick upon Tweed for five years. He was the eldest son of the first earl (Nos. 628/630). Born 20 May, 1364, married Elizabeth, daughter of Edmund Mortimer, earl of March, created K.G. 1388, killed at Shrewsbury, 23 July, 1403, in his father's lifetime.

632. PERCY, HENRY P.R.O.; K.R. 7<sup>3</sup>/<sub>3</sub>; Nos. 29, 41, 42; A.D.  
1392/95.

Red, round, 29 mm., armorial, a lion rampant and a label of three points. A hand and arm appearing from clouds above holds the shield by its strap.

s' : henrici . de : percy . filii :

Same man as preceding.

633. PERCY, HENRY *Arch. Ael. N.S. iv, p. 183; c. A.D. 1400.*

Red, round, armorial, 42 mm., armorial quarterly I and IV Percy, II and III Lucy. The shield hangs from a fetterlock through which its strap passes; on each side is a lion with his back to the shield.

... s . . . . nortbumbri . . . .

Same man as above, this seal would be made and used by him after the death of his step-mother Maud Lucy, when the entail of her estates on her husband and his issue became certain. Seal illustrated *Ibid.*, p. 183.

634. PERCY, HENRY P.R.O.; B.S. 367; A.D. 1527/28.

Red, round, 48 mm., a sitting lion holding up a banner quarterly Percy and Lucy.

s'henrici : percy : comitis : nortbibrie :  
custodis . marcbie . versus : scotiam .

Counterseal: red, round, 23 mm., a lion within a beaded circle—*tout loyal*: a crescent and a fetterlock alternately between each letter.





Succeeded his father as sixth earl of Northumberland, 19 May, 1527, appointed lord warden of the East and West Marches, 2 Dec., 1527. This seal is for that office and is evidently copied from that used in his father's lifetime (A.D. 1446) by Henry Percy, afterwards third earl of Northumberland (*Durham Seals*, 1965). For counterseal see *Ibid.*, No. 1969.

635. PERCY, HENRY ALGERNON P.R.O.; B.S. 405; A.D. 1528/29.  
Red, round, 83 mm., an armorial shield of five pieces; I Quarterly, 1. a lion rampant (Percy); 2. France and England quarterly in a border (?) (Beaufort); 3. three lucas (Lucy); 4. barry wavy (Spenser) II a fess indented of five fusils (Percy ancient) III barry of six a baston (Poynings) IV three piles (Bryan). Dexter supporter a crowned panther, sinister a unicorn, collared and chained. Above the shield is a mantled helm with cap of estate on which stands the lion crest. Beneath the shield on a scroll is ESPERANCE. (Seals, plate v.)

H'RI·ALGERNNVS·PERCY·CO'IT·NORTHONBRIE.  
HONORV'·DE·COCKERMO'TH·ET·PETWORTH·DNS·

Seal of Henry, sixth earl, succeeded 19 May, 1527, died 30 June, 1537.

636. PERCY, HENRY P.R.O.; B.S. 421; A.D. 1536.  
Red, round, 83 mm., a Gothic shaped shield of five pieces quarterings and supporters as on previous seal. The shield is surrounded by the Garter with motto above which is helm and crest as on his - earlier seal.

S'HE'RICI·COMIT'·NORTHVMBR'·DN'S·HONOR·DE·  
COCKERMVTH·ET·PETWORTH·D·P'CI·LVCI·PONY'G.  
FIT'PAYNI·ET·BRIAN·

Same man as previous No. 635; seal used after his creation as K.G., 23 April, 1531.

637. PERCY, HENRY P.R.O.; B.S. 421; A.D. 1536.  
Red, round, 28 mm., a lion rampant within the Garter.  
Privy seal of the same earl as the two previous numbers.

638. PERCY, ROBERT B.M. Harl. 245, Fo. 72<sup>v</sup>; A.D. 1317.  
Red, round, 30 mm., armorial, a fess indented of five fusils. The field and charges are finely diapered. At each side of the shield, supporting it, is a lion rampant. Above shield is SIGILLVM, beneath it SECRETI.

Document dated at Sutton on Derwent. The shield is blasoned for him in Jenyn's Ordinary *azure a fess of five fusils gold*.

639. PERCY, ROBERT Dods. 49, Fo. 48; N.D.  
Round, armorial, a fess indented of five fusils.

† SIGILLVM : ROBERTI : DE : PERCIE.

640. PERCY, RALPH *Brand MS. Coll. VIII; A.D. 1487.*  
 Round, armorial, in a border engrailed a crescent between two stars.  
 No legend.  
 Styled knight. He is probably the son of that Sir Ralph Percy who was killed at the battle of Hedgely Moor in 1464. The crescent is evidently from the Percy arms but it is a strange shield for one so closely allied to the main stem of the family.
641. PERCY, THOMAS (BISHOP OF NORWICH) *B.M. Seal Cat. 2043; A.D. 1366.*  
 Green, oval, 90×51 mm., in a canopied niche of fine tabernacle work, the bishop, in pontificals, standing blessing. On his dexter a shield of arms, a lion rampant (Percy) on his sinister a like shield, a lion rampant in a border (gules) (Percy differenced).  
*s . . . tbome · deo · gra · norwicensis · episcopi.*  
 Engraved *Percy Seals*. A younger son of Henry, second lord Percy of Alnwick. He was bishop of Norwich 1356-69.
642. PERCY, THOMAS *P.R.O.; K.R.  $\frac{68}{10}$  No. 230; A.D. 1383/84.*  
 Red, round, very imperfect, armorial, a lion rampant. The shield is couched and hangs from a mantled helm with cap of estate on which is the crest of a standing lion with drooping tail, on each side of it is a stag (?) at speed.  
 Legend destroyed.  
 Styled knight, constable of Roxburgh castle.
643. PERCY, THOMAS *Percy Seals No. 17; A.D. 1393.*  
 Round, imperfect, 33 mm., armorial, a lion rampant, the shield is placed in tracery and has probably had a helm and crest above it, but the upper part is destroyed.  
*sigillum · tbome · percy ·*  
 These two (Nos. 642/643) are for the same man, the second son of Henry, third lord Percy of Alnwick. He was one of the great men of his day, created earl of Worcester, 29 Sept., 1397, beheaded 23 July, 1403, after the battle of Shrewsbury. The entire arms of Percy are blazoned for him in *Willemet's* roll of Richard II, and I can detect no difference on his seals.
644. PERCY, THOMAS *P.R.O.; Greenwich, 16A7; A.D. 1434.*  
 Round, signet, a deer kneeling to left.  
 Document printed *N.C.H.* x, p. 261.
645. PERCY, THOMAS *P.R.O.; Wards and Liveries, 136/6; A.D. 1435.*  
 Red, round, 45 mm., armorial quarterly Percy and Lucy. Shield is

couched and hangs from a mantled helm with cap of estate on which is the lion crest.

Legend on a ribbon.

**sigillum: thome: percy . . . dni . . .**

Nos. 644/645 for the same man, the third son of Henry the second earl of Northumberland. Created by patent 20 Nov. 1449, baron of Egremont. A supporter of Henry VI in whose defence he was killed at the battle of Northampton, 10 July, 1460. I can detect no mark of difference on his shield of arms on above seal. (*Comp. Peer.* v, 33.)

646. PERCY, WALTER Dods. 7, Fo. 63<sup>b</sup>, circa; A.D. 1220.  
Green, round, equestrian, knight in mail with sword and shield, galloping to the sinister.

† SIGILL' WALTERI: DE: PERCI.

Document printed *Guisbro' Chart.*, p. 234. (Surtees' Socy. publ. 86.)

647. PERCY, WILLIAM B.M. Add. Chart. 20,565.  
Green, round, equestrian, knight in mail with sword and shield charged with a fess fusilly. His helmet has a plant, or flower as crest and the field of shield is powdered with trefoils.  
He is styled son of Walter Percy of Kildale.

648. PERCY, WILLIAM P.R.O.; L.S. 83; 13th Cent.  
Light brown, round, 46 mm., equestrian; the same seal as *Durham Seals* No. 1970<sup>a</sup>.  
*Counterseal*: natural wax, oval, 15 mm., ancient gem, a bird.

† SIGILL' SECRETI.

649. PICKERING, JOHN Woodman, 19; A.D. 1374.  
Red, round, imperfect, armorial, a lion rampant.  
Legend destroyed.  
See *Arch. Ael.* 3rd Ser. v., pp. 47, 54.

650. PLAYCE, WILLIAM B.M. Harl. 245, Fo. 85<sup>b</sup>;  
A.D. 1353.  
Round, armorial, on a chief three chaplets.

† S'WILL'MI: DE: PLAYCE

Document is a receipt by William Playce, knight to Ralph of Hastings knight. Shield blasoned for him in the 'Powell' roll, *azure on a chief silver three chaplets gules.*

651. PLESSY, JOHN OF Dods. 45, Fo. 33<sup>v</sup>; A.D. 1315.  
Round, armorial, a lion rampant.

† SIGILL': IOH'IS: DE: PLESSYIS:

A John of Plessy was sheriff of Northumberland, A.D. 1258, probably this man's father.

652. PLESSY, JOHN OF P.R.O.; Ex. K.R.  $\frac{16}{28}$  No. 49; A.D. 1323/24;  
and Ridley p. 43.  
Red, round, 18 mm., a bird.  
..... IS: DE: PLESIT . . .  
Styled of Northumberland; son of Simon of Plessy.
653. PLESSY, JOHN OF Waterford 28/58; A.D. 1325.  
Red, round, 20 mm., a cinquefoil in a circle of roundels.  
No legend.  
Given at Halford, 16 Sept., Gilbert of Burradon, then sheriff of North-  
umberland.
654. PLESSY, RICHARD OF Waterford 34/60; A.D. 1340.  
Red, round, 24 mm., two hands clasped; upon the right one a  
bird is perched.  
.. VE . . . . . DE . . . . . CA . . . . .  
Styled son and heir of John of Plessy; deed given at Newcastle upon  
Tyne. For pedigree of this family see *Hodgson* II, ii, 295.
- 654A. PLESSY, RICHARD OF Ridley, 85; A.D. 1346.  
Round, 25 mm., armorial, a beast (? a lion) rampant.  
† SIGILL: RICARDI . . . . PLESSIS .
655. PLUMPTON, ROBERT OF. B.M. Add. Chart. 16,630. Seal Cat.  
12,741. *Temp.* Ed. III.  
Red, round, 27 mm., armorial, a fess indented of five fusils, shield  
hangs from a mantled helm with coronet and crest of a bird's  
head. On a dexter in the field is C. crowned.  
† S' ROBERTI: DE-PLVMTV . . .
656. PLUMPTON, ROBERT OF B.M. Add. Chart. 16,705. Seal Cat.  
12,742.  
Green, round, 20 mm., armorial, a fess indented of five fusils. A  
wyvern at each side and above the shield.  
\* S' ROBERTI: DE-PLVMTNA.  
See *Arch. Ael.* 3rd Ser. I, p. 64 *et passim*. The shield is derived from  
that of Percy whose tenants the Plumptons were. According to the  
rolls (*Powell and Willement*) they differenced the Percy indented fess  
by placing an escallop gules on each fusil. In the *Parliamentary* roll  
Sir Robert differences with molets instead of the escallops, but neither  
appear on these seals.
657. POLE, MICHAEL DE LA B.M. Cott. Chart. xxviii, 85, A.D.  
1384.  
Red, round, 45 mm., armorial, a fess between three leopard's heads.  
Shield hangs from the forked branch of a tree, there is a lion  
crouching on each side of it, supporting the shield with its back.  
(Seals, plate v.)  
× sigillum: micbaelis: de: la: pole.

Son of William de la Pole (Seal *Durham Seals*, 2004), he was afterwards earl of Suffolk, died A.D. 1389. For Durham connection see *Surtees* III, 39.

658. POLE, MICHAEL DE LA B.M. Harl. Chart. 54I.7; A.D. 1408.  
Red, round, 45 mm., armorial, quarterly I and IV, a fess between three leopard's heads (de la Pole) II and III, on a bend three pairs of wings (Wingfield). Above the shield is ii, with foliage. The shield is placed in a panel of fine tracery.

\* sigillu' : micbaelis : de : la : pole . . . . . uffolcbie .

Son of the above and second earl of Suffolk, died at the siege of Harfleur, 14 Sept., 1415. The quartering is for his mother Catherine, daughter and heiress of Sir John Wingfield. (*Off. Baronage* III, 434), the blason is silver on a bend gules three pairs of wings silver.

659. POLE, WILLIAM DE LA B.M. Seal Cat. 12,761; A.D. 1420.  
Red, round, very imperfect, armorial, quarterly I and IV de la Pole, II and III Wingfield. On a mantled helm the crest of an old man's bearded head. Legend on a ribbon—

\* s' . d . will . . . . . itis . suffolcbie . . . . . briqubec

continued in the field

nama . . . rid . . (?)

He was the fourth earl of Suffolk younger son of above No. 658 and brother of Michael the third earl who was killed at Agincourt. He was created lord of Briquebec in Normandy, 12 March, 1417, duke of Suffolk, 1448; killed 2 May, 1450.

660. PONTE, WALTER DE University Coll. Oxford P. Fasc. 2,  
No. 1.

Round, device a key.

. . . WAL'TI : D' PONTE .

Of Newcastle upon Tyne. His wife Sybil uses a seal to the same deed but it is not her own. He was bailiff of Newcastle A.D. 1255 (*Brand* II, 394).

661. PORT, JOHN St. Margaret's Deeds A54; A.D. 1324.  
Brown, round, 13 mm., a squirrel.

✦ I. CRAKS-NOTIS

See N.C.H. x, 448, No. 78.

662. PRENDERGAST, ADAM OF P.R.O.; Wards and Liveries, Box  
13, n.d.

Natural wax, round, 34 mm., an animal passant.

✦ SIGILL' : ADE : FIL' : HENRICI : DNI : D : PNDRG.

Grant to his lord, William of Colvill.

663. PRENDERGAST, ADAM OF *Ibid.*, Box 40, No. 9, n.d.  
Brown, round, 32 mm., a beast passant.

✦ SIGILL' ADE : PRE . . . GIE . . . . .

N.C.H. xi, p. 230 *et seq.*



664. PRESSEN, JOHN OF B.M. Add. Chart. 6052; A.D. 1415; Seal  
Cat. 12,835.

Red, round, 29 mm., armorial, three butterflies. Shield is suspended from a tree's branches and is placed in tracery. A branch of roses at each side of shield.

\* *sigillum* : x : *iobannis* : + : *presfen*.

See N.C.H. II, 322 note and *Proc. Socy. Antq.* of N.C. 3rd Ser. VI, 85.

665. PRESTON, JOHN OF Laing Charts. 52; A.D. 1364.  
Red, round, armorial, a chevron between three crosses (?)

+ S' : IOHANNIS : DE : PRESTOVN.

Indenture between Henry Strother sheriff of Northumberland on the one part and John of Preston and John of Belasise on the other, dated at Newcastle upon Tyne.

666. PUDSAY, JOHN OF Pudsay Deeds, No. 247; A.D. 1399.  
Green, round, 26 mm., armorial, a chevron between three pierced molets. The shield is couched and above it, on a mantled and coroneted helm, is the crest of a unicorn's head. The field of seal is diapered with crosses and on each side of shield is an arrow head with shaft.

s . *johi* ' : *de* : *pudisai*.

*Yorks. Record Series*, vol. LVI, pl. 9, No. 10. For deeds relating to his land at Walwick (near Hexham) see *Ibid.*, Nos. 463/465. The shield is blasoned for him in Jenyn's Ordinary; *vert a chevron between three spur rowells gold*.

667. PUNCHARDON, CECILY Waterford, No. 13; A.D. 1379.

Red, round, signet, 10 mm., the letter *cy*  
Deed dated at Newcastle upon Tyne; she is styled widow of Robert of Punchardon.

668. RADCLIFFE, SIR GEORGE Greenwich, 19, K36; A.D. 1547.  
Round, armorial, a bend engrailed impaling a fess between three cart wheels.

No legend.

Styled of Cartington. See *Visits of North.*, pp. 38 and 39. (Surtees' Socy. publ. 122.) The blason is *silver a bend engrailed sable* for Radcliffe. The impalement is for Cartington, the blason being unknown (see No. 143). Sir George's grandmother was the daughter and heiress of John Cartington of Cartington.

669. RADCLIFFE, RALPH OF Cast. B.M. Seal Cat. 12,896.  
Round, 26 mm., armorial, a bend engrailed, the shield is placed in a traceried panel.

\* S'RADVLFHI-DE-RADCLIF.

See Pedigree *Surtees*, III, 128.

670. RALPH, HENRY SON OF . . . . . Waterford, 14, early 13th Cent.  
Green, round, 40 mm., a large cinquefoil.  
‡ SIGILL' HENRICI FILII RADVLFI.  
N.C.H. ix, p. 253, note 3.
671. RANDOLF, THOMAS . . . . . Balliol D4/5; A.D. 1287.  
Brown, round, 24 mm., armorial, three lozenges or cushions.  
Shield in a trefoiled panel an annulet in each of the cuspings.  
(Seals, plate v.)  
‡ S . . . . VM THOME RANDOLF.  
Styled an executor of John Baliol. He was also the executor of Dervorguil Baliol, he died before 1306. (*Scot. Peer.* ed. Paul VI, 289.)
672. RAYMES, HUGH OF . . . . . Raimes' Deed, c. A.D. 1280-90.  
Brown, round, 26 mm., armorial, three shields in triangle, the chiefs to the centre, each charged with a cross engrailed. Field diapered with a floral device. (Seals, plate VI enlarged.)  
\* SIGILL! HVGONIS DE REMES.
673. RAYMES, ROGER OF . . . . . Raimes' deed. A.D. 1269.  
Green, oval, 33×21 mm., a cross paty with a spike at the end of the lower limb. (Seals, plate v.)  
‡ S' ROGERI DE REYMES.  
Styled knight. He was the elder brother of the above Hugh. Both seals are attached to deeds belonging to Mr. A. L. Raimes of Stockton. See *Arch. Ael.* 3rd Ser. iv, 313 and *Hodgson* II, i, 367.
674. RAYMES, ROBERT . . . . . Dods. 45, Fo. 116. A.D. 1541.  
Round, armorial, cross engrailed.  
Legend not given.  
Styled of Shortflat. See references as above. Dodsworth notes '*Raymes port sable a cross engrailed argent.*'
675. REDHEUGH, HUGH DEL . . . . . P.R.O. Duchy of Lancaster. A. Nos. 10 and 151. A.D. 1369/70.  
Red, round, armorial, three cocks' heads rased. The shield is couched and above it is a mantled helm with crest of a cock's head.  
‡ S' HVGONIS D' REDHOW'  
Grant to him of the keeping of Lochmaben Castle. See *Bain* iv, pp. 144 and 161.
676. REDHEUGH, THOMAS DEL . . . . . P.R.O.; B3839; A.D. 1411.  
Red, round, 24 mm., three cocks' heads rased.  
No legend.  
Styled son and heir of Hugh del Redhough.

677. REDHEUGH, THOMAS FITZ GILBERT DEL B.M. Chart. xxix .18.  
A.D. 1322.

Brown, round, 22 mm., armorial, three shields placed in a trefoiled compartment, their points to the centre. I, two lions passant, II, two bars in chief two escallops. III, an orle.

S' ISABELLE.

Used by him, styled of Newcastle upon Tyne. It is a lady's seal, but whose, it is not possible to say. For pedigree of the family see *Surtees* II, 132. Their shield is blasoned *silver three cocks' heads sable wattled gules.*

678. REDMAN, MATTHEW OF P.R.O.; K.R.  $\frac{68}{8}$  No. 189; A.D. 1380.  
Red, round, 28 mm., armorial, a chevron between three tasselled cushions. The shield is in tracery and hangs from a tree's branches.

× sigillum: ma . . . . redman.

Blasoned for him in the roll of Richard II *gules a chevron silver between three cushions ermine with gold tassels.* He was at Otterburn and it is he of whom Froissart tells a delightful story of his flight, capture and rescue after the battle. (Ed. Macaulay, p. 377.)

679. REDWARE, MARGARET B.M. Egert. Chart. 554; A.D. 1322/23.  
Green, oval, an eight leaved flower.

† S' MARGARET-REDWARE.

Styled daughter and heiress of Robert of Redware, N.C.H. x, 438, No. 37.

680. REDMERSHALL, RICHARD Deed A. M. Oliver; A.D. 1425.  
Red, round, 23 mm., armorial, three fleur de lis.

† S' . . . . . ANGAR . . . . .

Seal used by him, he is styled brother and heir of William Redmershall.

681. RICHMOND, JOHN DE DREUX EARL OF B.M. Egert. Chart. 399;  
A.D. 1315.

Red, round, 62 mm., equestrian, knight in mail and surcoat, closed helm, with sword and shield of arms, checky a border charged with leopards, a canton ermine (Brittany). Field diapered with lozenges and pierced cinquefoils.

. . . . . NDIE

*Counterseal.* Round, 23 mm., shield of arms, as on the seal, placed in a quatrefoiled panel and hanging by its strap from a tree.

No legend.

Earl of Richmond 1306, died 1334. Received manor of Hart from Edward II (*Surtees* III, 95). For shield see *Durham Seals* No. 2082 and note 191.

682. RIDDEL, WALTER Laing Seals, I, 696; A.D. 1566.  
Round, 32 mm., armorial, a chevron between three ears of rye.

† S'VALTERI-RIDDEL.

Of Riddel, county Roxburgh. The family afterwards of Northumberland.



683. RIDEL, WILLIAM . . . . . P.R.O. Ex. Q.R. Misc.  $\frac{37}{1}$ ; A.D. 1318.  
Red, round, a fragment only remains, armorial, a lion rampant in  
an engrailed border.  
  
Legend destroyed.  
Styled knight, sheriff of Northumberland. Document *Bain* III, 606.  
Shield blasoned for him in the 'Boroughbridge' and 'Parliamentary'  
rolls *de goules ove j lyoun et la bordure endente d'argent*. The arms  
are the same as those of Grey of Heton and Chillingham but I know of  
no record so early as this for their arms.
684. RIDLEY, NICHOLAS OF . . . . . P.R.O. Duchy. Lancas. A/140;  
A.D. 1346.  
Red, round, a stringed hunting horn between a crescent and a star.  
× S'NICH'IS-DE-RIDELEI  
A surety for Richard of Thirlwall, constable of Lochmaben. (*Bain* III,  
1459.) See Pedigree *Hodgson* II, ii, 322.
685. RODDAM, ADAM OF . . . . . P.R.O. Exch. K.R.  $\frac{16}{8}$  13; A.D. 1323.  
Red, round, imperfect, a grotesque beast with a man's head.  
. . . . . ETS . . . . .  
  
Styled of Newcastle upon Tyne.
686. RODDAM, JOHN OF . . . . . P.R.O. Exchq. Q.R. Misc.  $\frac{38}{24}$ ; A.D. 1323.  
Red, round, an ancient gem, undecipherable.  
‡ S' IOHANNIS DE RODVM'  
Used by Adam son of Robert of 'Rodome.'
687. RODDAM, JOHN OF . . . . . P.R.O. Exchq.  $\frac{16}{8}$  33; A.D. 1323.  
Red, oval, 26×17 mm., ancient gem, a standing figure. (Seals,  
plate IV.)  
\* S' IOHANNIS-DE-RODVM  
Used by Robert of Roddam.
688. RODDAM, JOHN OF . . . . . B.M. Harl. Ch. 57 D.9; A.D. 1380.  
Red, round, 26 mm., armorial, on a bend three cinquefoils (?) field  
of seal diapered with lozenges.  
. . . . . SILLV' . . . . . DE . . . . .  
There is a pedigree of the family, later than these seals, in Foster *Visits*  
*of Northumberland*, p. 106.
689. ROKEBY, SIR THOMAS . . . . . B.M. Harl. Ch. 55 D.50; A.D. 1402.  
Red, round, 23 mm., armorial, a chevron between three rooks.  
Shield is in a traceried panel and hangs from the branches of a  
tree.  
  
\* sigillum : thome : de : rokeby.  
He was sheriff of Northumberland in 1405. His shield is blasoned in the  
roll of Richard II, *silver a chevron between three rooks sable*.
690. ROS, MARGARET OF; see Brus No. 100.

691. ROS, WILLIAM OF P.R.O. *Bain* II, 488; A.D. 1301.  
Round, armorial, three bougets.  
‡ S' WILLELMI DE ROS.
692. RUDESTONE, ROBERT OF P.R.O.; B3129; A.D. 1365.  
Red, round, 20 mm., armorial, an orle within which is a saltire.  
Legend illegible.  
Styled rector of Bothal.
693. RYDDYNGS, JOHN DEL Dur. Treas. 4-5 Spec. 21; A.D. 1386.  
Red, round, 21 mm., armorial, a fess between three birds in chief  
and a cinquefoil in base.  
× sig . . . . nis . . del . r . . . . ngs.
694. RYLE, RICHARD OF P.R.O. Wards and Liv. 40, No. 11;  
A.D. 1410.  
Round, 20 mm., armorial, device blurred (? a chevron).  
Legend illegible.
695. SADBERGH, JOHN OF P.R.O. Exch. K.R.  $\frac{16}{20}$  57; A.D. 1322/23.  
Red, round, 21 mm., armorial, three cinquefoils.  
\* S' IOHANNIS D . . . . .  
Styled of the bishopric of Durham.
696. ST. MAUR, LAWRENCE DE B.M. Cott. Chart. xxvii, 70, n.d.  
Green, round, 26 mm., armorial, two chevrons and a label of three  
points.  
‡ S-LAVRENCII D'SCO: MAVRO.
697. ST. MAUR, THOMAS DE Merton Coll. No. 419; A.D. 1348.  
Round, armorial, two chevrons and a label of four points.  
‡ S' THOME DE SCO' MAVRO.  
Held Newton by the Sea. N.C.H. II, 84 *et seq.* *Comp. Peer.* 1st ed.  
vii, 23. The arms are blasoned for Lawrence in *Planche's roll silver*  
*two chevrons gules and a label of five points azure.* *Genealogist* N.S.  
III, No. 259.
698. ST. PAUL, MARY DE (COUNTESS OF PEMBROKE) Pembroke Coll.  
Charters; A.D. 1347. Cast B.M. Seal Cat. 6707.  
Red, oval, 81×48 mm. The countess standing, full face in long  
dress, mantle and wimple, in a niche of tabernacle work with  
triple headed canopy. On the tracery on the dexter is a shield of  
arms barry an orle of martlets (Valence) on the sinister a like  
shield paly (güles) and vair on a chief a label of three points  
(Chastillon). (Seals, plate vi.)  
× S'MARIE DE SCO PAULO COMITISSE PEMBROCH'  
DNE D'WEYS D'MONTIGNAC' ET D' BELLAC'  
*Counterseal*: round, 28 mm.; in the centre of very elaborate tracery,  
a shield of arms, Valence impaling Chastillon. In a traceried

roundel on the dexter are the arms of England and on the sinister one charged with France (ancient) beneath the shield in a like roundel are the arms of Dreux, checky a canton ermine. (Seals, plate vi.)

× S-MARIE DE SEYN.POUL.COMITTISE PEMBROCHIE.

N.C.H. VII, 235 *et seq.* On p. 238, a seal, attached to a deed there quoted (note 2), bears only the shield of Dreux, the arms of her maternal grandfather. It is evidently not her own seal.

699. ST. PETER, WALTER OF P.R.O.; B4631; *circa*; A.D. 1260.  
Green, round, 32 mm., a crescent enclosing a star.

✦ S-WALTERI . . . ANTI.PETRI.

*Hodgson* II, ii, 34.

700. SALCOCK, THOMAS OF Dods. 45, Fo. 73<sup>v</sup>; A.D. 1318.  
Round, armorial, three cocks.

✦ SIGILLV' THOME-DE-SALCOKE.

Deed is a grant from Sir Nicholas Meinell, lord of Whorlton, to Thomas son and heir of Thomas Salcock. See *Yorkshire Deeds* (York. Rec. Ser. xxxix), p. 98 and note 1.

701. SAPY, JOHN OF P.R.O.; L.S. 93; A.D. 1315/16.  
Red, round, 21 mm., armorial, a bend charged with three buckles.

There is no legend but around the border are six splayed eagles.

The shield hangs from a bush.

I include this seal because he must have been some connection of Robert Sapy (*Durham Seals*, No. 2169) and because of the interesting differencing. The eagles on Robert's bend are here transferred to the border of the seal and buckles take their place on the bend. In a copy of an old book of arms in my possession, John Sapy bears *gules three buckles gold*. I have failed to trace him but in 1316/17 Robert of Sapy was escheater beyond Trent (*Hodgson* III, ii, 296).

702. SHILVINGTON, ROBERT OF P.R.O. Duch. of Lancas. Box  
A, No. 137; A.D. 1344.

Red, round, 26 mm., an open right hand fessways, within tracery.

× S' ROBERTI-DE-SCHILVYNGTON.

Styled a burgess of Newcastle upon Tyne. He was bailiff of the town in 1336 and Mayor in 1345. (*Brand* II, 410 and A. M. Oliver MS. revised list of Mayors.)

703. SCIRBURN, WILLIAM OF B.M. Cott. Ch. xxix, 63; A.D. 1407;  
Seal Cat. 13,335.

Red, round, 23 mm., armorial, a chevron between three stars, within an engrailed border.

\* s. willi. de . scirburn.

Styled of Northumberland.

704. SCOT, JOHN P.R.O.; R.S. 93; A.D. 1322/23.  
Red, round, 20 mm., armorial, a chevron, charged with three molets  
(?) between three escallops over all a baston.

× SIGILLVM·JOHANNIS·SCOT

Styled son of Nicholas of Newcastle upon Tyne.

705. SCOT, JOHN P.R.O. Exchq. K.R.  $\frac{16}{20}$ , No. 63; A.D. 1323/24.  
Brown, round, 20 mm., armorial a chevron between three  
escallops (?).

\* S·JOH'IS·FIL'·JOH'IS . . . . SCOT

Styled of Newcastle upon Tyne.

706. SCOT, NICHOLAS P.R.O. Exchq. Q.R.  $\frac{37}{1}$ ; A.D. 1318.  
Green, round, 23 mm., armorial a chevron between three escallops,  
five molets (?) on the chevron.

\* SIGILLV' NICHO . . . . T .

Styled knight of Newcastle upon Tyne. He was mayor of Newcastle several years between 1321 and 1328; M.P. 1340. The three shields appear to be all for members of the same family but the blason is unknown.

707. SCROPE, HENRY LE Yorks. Arch. Jour. XII, 258; A.D. 1384.  
Round, imperfect armorial, a bend and a label of three points. The  
shield hangs by its strap from a tree.

× sigillu b . . . . . :le:scrop.

Lord of Walton (*Hodgson* II, i, 372/73). He was a famous warrior fighting at Berwick, Halidon Hill, Crecy, Neville's Cross and at Calais 1346/47. Summoned as the first lord Scrope of Masham 1350-1391. Warden of the East March 1370; died 1391. (*Comp. Peer.* 1st ed. VII, 89.) The blason is *azure a bend gold a label silver*. The label was the difference used by the younger house of Masham, the elder of Bolton using the entire arms.

- 707A. SCROPE, HENRY LE Streatlam  
Deeds No. 3; 12 March, 1388.

Brown, round 27 mm., armorial, a bend and a label of three points. The shield is couched and hangs from a full faced mantled and coroneted helm from which rises the crest of two crab's nippers. On the dexter side above the shield is a right hand grasping a spear with pennon emblazoned barry. (Seals, plate v.)



\* SIGILLUM·HENRICI·LE·SCROP

The same man as No. 707. This is the same seal as No. 2199 *Durham Seals* but more perfect.

708. SCROPE, STEPHEN LE B.M. Harl. Ch. 112D, 13; A.D. 1395;  
Seal Cat. 13,367/13,371.  
Red, round, 35 mm., armorial, a bend and a label of three points.  
The shield is couched and above it on a mantled helm is the crest  
of the nippers of a crab. The field is diapered with foliage and  
the shield placed in a traceried panel.  
**s' steph'i:le. scrop dnt:de:masbam.**  
He was the second son of the above Henry. Served in France and with  
the Black Prince in Spain, died 1422. In *Willement's* roll he differences  
the shield of the house of Masham by adding a molet ermine.
709. SCROPE, THOMAS LE B.M. Cat. 13,377; c. A.D. 1462.  
Round, 40 mm., armorial, a bend and a label of three points. The  
shield is couched and hangs from a mantled helm on which is  
the crest of a crab. Field of seal diapered. Legend on the scroll.  
**sigillu: . . ome: dn'i: lescrop: masbam:**  
He was the fifth lord Scrope of Masham, died A.D. 1475.
710. SCROPE, WILLIAM LE B.M. Harl. Ch. 56, A22; A.D. 1393.  
Red, round, imperfect, armorial a bend and a label of three points.  
The shield hangs from a mantled helm and for crest a coroneted  
plume of feathers. The field of seal is diapered. (Seals, plate v.)  
**. s . . . . . : le : . . scrop . .**  
Brother of Stephen le Scrope (No. 708) created earl of Wiltshire 1397.  
Granted the lordship of Barnard Castle, A.D. 1398. Beheaded A.D. 1399.  
(Hutchinson's *Durham* III, 240; *Hist. Peer.* ed. Courthorpe, 514.) He  
was lord of Man and the Isles. His seal for that office is B.M. Cat.  
13,378. His arms are blasoned in *Willement's* roll of Richard II, I and  
IV gules three legs conjoined silver a label silver (Man); II and III,  
Scrope as above.
711. SEGRAVE, JOHN OF P.R.O. Baron's Letter No. A36; A.D.  
1301.  
Green, round, 24 mm., armorial, a lion rampant. The shield hangs  
from a tree's branches and on each side of it is a sheaf.  
**S' IOH'IS : DE : SEGRAVE**  
Warden of Berwick and captain of Northumberland A.D. 1302. He was  
much employed in Scotland and the Marches, taken prisoner at Bannock-  
burn and died in Gascony A.D. 1325. This seal is illustrated in facsimile  
in Foster's *Some Feudal Lords and Their Seals*, p. 109. His arms  
are blasoned in *Falkirk* roll *de sable ou ung leon rampant d'argent*  
*coronne d'or*. His banner was also so emblazoned at the siege of  
Caerlaverock. I can see no trace of the crown on his seal.
712. SELBY, JAMES B.M. Harl. MS. 1448, Fo. 24<sup>v</sup>; A.D. 1362.  
Round, very imperfect, armorial, barry.  
**Legend destroyed.**  
See Foster's *Visits of Northumberland*, p. 110 note. There is a short  
account of the family and their manor of Biddleston in *Ber. Nat. Club*  
*Trans.* XVIII, 74.

713. SELBY, JOHN B.M. Harl. MS. 1448, Fo. 24<sup>v</sup>.  
Round, armorial, barry.  
Legend not given.  
See reference as above. The shield is blazoned for Sir William Selby in  
*Powell's roll barry of fourteen gold and sable.*
714. SETON, IVO OF Dods, vii, Fo. 63.  
Round, a fleur de lis.  
SIGILL': HIVE: DE: SETVN.
715. SHAFTO, JOHN Waterford MSS.; A.D. 1583.  
Red, round signet, 15 mm.,  $\int$   $\text{S}$  entwined in a knot between four  
pellets, a beaded border.  
Styled of Berwick upon Tweed.
716. SHITLINGTON, ADAM OF P.R.O.; K.R.  $\frac{1}{2}$  $\frac{6}{8}$ , No. 77; A.D.  
1322/23.  
Red, round, imperfect, armorial, three boars' heads rased.  
\* S' ADE-DE-SH . . . . .  
Shitlington or Shotlington is on North Tyne near Bellingham.
717. SHOTTON, HENRY OF Ridley, p. 16.  
Green, round, 30 mm., a six-leaved flower.  
+ S': HENRICI: DE: SCOTTVN.  
Styled in deed Henry Freeman. It is a grant to his lord, John of Plessey  
of all the land he held of him in Shotton. Witnessed by Roger Merlay,  
William Heron then sheriff and others. Shotton is a township in the  
parish of Stanington, see *Hodgson*. ii, ii, 312.
- 717A. SHOTTON, RICHARD OF Ridley p. 22.  
Brown, round, 32 mm., imperfect a device like a cross.  
+ S . . . ICARDI . . . . .  
Styled son of Robert of Shotton.
718. SOMERVILLE, JOAN, see No. 337, Joan Griffith.
719. SOMERVILLE, PHILIP OF Balliol E1/7 and E1/4; A.D. 1340.  
Brown, round, 40 mm., armorial, crusilly fitchy three splayed  
eagles. The shield hangs from a tree and a wyvern is at each  
side of it.  
+ S' PHI: SOMERVILE: DE. WYCHYNOVERN: DNI.  
*Counterseal*: round, 27 mm., armorial three splayed eagles. The  
shield is amidst rich tracery and above it is Our Lady holding the  
Child Christ. (Seals, plate v.)  
. . . FORT ABTOS CVDA . . . TVTT DEI . DI . .  
The seal is the same as *Durham Seals* No. 2271. I have included it  
here because of the counterseal.
720. SOULES, JOHN OF Bain pl. III, No. 6, 1289/90.  
Red, round, 26 mm., armorial; barry of six a. bend. Shield is in a  
sixfoiled panel.  
+ S' IOH'IS-DE-SOVLES-MILITIS:

- They held lands in the Stamfordham district. See N.C.H. vii, 109. Nicholas of Soules the competitor for the crown of Scotland bore barry of six. P.R.O. detached seal, *Bain* II, 102. The blason is *barry silver and sable (Armorial de Gelre)*.
721. SPENSER, WILLIAM Woodman 19; A.D. 1374.  
Red, round, 23 mm., armorial, a bend engrailed between two cotises flory.  
    . . . . . SIGILLVM-WILLELMI . . . . .  
See *Arch. Ael.* 3rd Ser. v, 54, No. 19.
722. SPRING, HENRY Balliol D4/5; A.D. 1287.  
Green, round, 20 mm., armorial, an orle in chief three buckles.  
(Seals, plate v.)  
    ✚ S'HENRICVS-SPRING-DE-HOVTVN.  
Styled executor of John Baliol. The shield obviously bears the differenced arms of Balliol. See his equestrian seal, *Durham Seals*, No. 2286.
723. SPYNKE, JOAN P.R.O.; B3922; A.D. 1428.  
Red, hexagonal signet 8×6 mm., a shield with a device of two (?) joined with a star between them, on dexter I, on sinister b.  
Beaded border.  
Styled wife of William Spynke of Gateshead.
- 723A. STANTON, TESS, daughter of John son of Matthew of Bowes No. 2; A.D. 1281.  
White, oval, a flower device.  
    . . . . . STANTON.  
Relates to land at Stantion near Barnard Castle.
724. STANDEN, THOMAS OF Dods. 49, Fo. 4<sup>v</sup>; A.D. 1346.  
Round, armorial, a bend.  
    No legend given.  
Document grant from Thomas of Standen and Margery his wife to John Heron lord of Moreton. Blason unknown.
725. STICKLAW, WILLIAM OF Waterford 37; n.d.  
Green, round, 30 mm., a floriated fleur de lis.  
    ✚ SIGILL' : WILL' I : DE : STIKELAW.  
See *Arch. Ael.* 3rd Ser. v, 54, No. 19.
726. STICKLAW, WILLIAM OF Waterford, 70; n.d.  
Green, round, 27 mm., a star.  
    S' WILL' : DE : STICKLAV.  
*Ibid.*, p. 248; No. vii.
727. STRABOLGY, see Athol Nos. 21-23.
728. STRATHERNE, MALISE (EARL OF) *Bain* II, pl. I, No. 1; A.D. 1296.  
Round, 23 mm., armorial, two chevrons. Shield in a sixfoiled panel of tracery.  
    ✚ S' MALIS : COM' DE-STRATHERNE

He married Margery, daughter of Robert Muscamp of Wooler. (N.C.H. I, 375; XI, 307 *et seq.*) The blason of his shield is *gules two chevrons gold*. For pedigree see *Scots. Peer.* ed. Paul, vol. VIII, p. 245..

729. STROTHER, ALAN DEL P.R.O. Chap. House, Box 173, No. 139; A.D. 1361.

Red, round, 26 mm., armorial, on a bend engrailed three splayed eagles. Shield in the centre of rich tracery.

† SIGILLVM·ALANI·DE·STROTHIR

Styled lord of Lyham.

730. STROTHER, JOHN DEL Dods. 45, Fo. 54<sup>v</sup>; A.D. 1376.  
Round, armorial, on a bend three splayed eagles a label of three points.

\* SIGILL'·IOH'IS·DEL·STROTHER.

731. STROTHER, JOHN DEL *Arch. Ael. N.S. I, p. 26; A.D. 1423/24.*  
Round, armorial, on a bend indented three splayed eagles, crest a demi eagle.

\* s · iohannis . . . other .

732. STROTHER, WILLIAM DEL *Arch. Ael. N.S. I, 25; A.D. 1395.*  
Round, signet, a splayed eagle.

Styled son and heir of Thomas del Strother.

733. STROTHER, WILLIAM DEL P.R.O.; A6148; A.D. 1359.  
Round, 24 mm., armorial, on a bend three splayed eagles, a border engrailed. Shield is couched and above it on a mantled helm is the crest of an eagle's head.

S'WILLELMI: D. . . . STROTHIE .

Pedigree *Hodgson II, i, 254; N.C.H. XI, 132, Visits. of Northumberland*, ed. Foster, p. 115. No. 733, is illustrated pl. III, No. 7 N.C.H. XI. The blason of their arms is *gules on a bend silver three splayed eagles vert.* (*Jenyn's and Rich. II, rolls.*)

734. STUTEVILLE, JOHN DE B.M. Harl. MS. 2044, Fo. 144; A.D. 1280.

Round, armorial, barry over all a lion rampant.

Legend not given.

For later seal see *Durham Seals*, No. 2336 and note. This seal (No. 2336) is illustrated here plate v. not No. 734.

735. STRYVELYN, JOHN OF P.R.O.; W.S. 441; A.D. 1338.  
Red, round, 23 mm., armorial, crusilly fitchy three covered cups with tops like fleur de lis. A wyvern is at each side of shield.

\* S' IOHANNIS: DE: STRIVELIN.

This appears to be a different and earlier seal than *Durham Seals*, No. 2334, which see and note on.



736. SWAN, WILLIAM Selby Charts. A.D. 1450.  
Red, round, 26 mm., armorial, a chevron between three slipped trefoils. (Seals, plate v.)  
x S'WILLELMVS-SWAN.  
Styled of Kidland, blason unknown (*Genealogist* N.S. VII. pp. 91/92.)
737. SWEETHOPE, THOMAS OF Balliol E1/2; A.D. 1323.  
Red, round, 20 mm., full faced head and neck of a man in mail.  
. . . THOM : D . . . THOP.
738. SWEETHOPE, WARYN OF P.R.O. Exch. K.R.  $\frac{1}{28}$ , No. 77;  
A.D. 1324.  
Brown, round, imperfect, on a lozenge a cinquefoil.  
\* SI . . . . HO . . . .  
See N.C.H. IV, 408. There is a pedigree p. 409, but Thomas does not appear in it.
- 738A. SWILLINGTON, ROGER OF Streatlam Deeds 10, 27 April,  
1394.  
Red, round, 31 mm., armorial, a chevron. The field of shield is diapered in a floral pattern. The shield, placed in tracery, hangs from a tree's branches. . . . .  
sigillum · roger' · swyllington.
739. SWINBURNE, ALAN OF Hodgson MSS. 1, p. 217; A.D. 1282.  
Green, oval, 28x22 mm., an ancient gem, device undecipherable.  
† ALLO . . . . NIA .  
He was rector of Whitfield son of John Swinburne. Pedigree *Hodgson* II, ii, 231.
740. SWINBURNE, ALEXANDER OF Dods. 45, Fo. 50<sup>v</sup>; A.D. 1342.  
Round, armorial, per fess three cinquefoils.  
No legend given.  
Pedigree *op. cit.* The blason in *Jenyn's Ordinary* (Ed. III) is *silver a chief gules three cinquefoils counter coloured*. The charges derive from the cinquefoil of Umfraville under whom the Swinburnes held their manor of Chollerton.
741. SWINBURNE, HUGH OF Dods. 45, Fo. 48; A.D. 1300.  
Round, armorial, per fess three cinquefoils.  
No legend given.  
Second son of above Alexander.
742. SWINBURNE, JOHN OF Balliol E4/6 circa; A.D. 1290.  
White, round, 23 mm., on a cross five sheaves.  
† S'JOH'IS : DE : SWYNBVRNE.  
See *Durham Seals*, No. 2363 and note 292.
743. SWINBURNE, JOHN B.M. Harl. Ch. 56G, 27; A.D. 1417.  
Red, round, imperfect, armorial crusilly three swines' heads coupéd in a border enrailed.  
\* s : toban : swynborne.

744. SWINBURNE, ROBERT OF Dods. 62, Fo. 85; n.d.  
Round, armorial, three swines' heads coupéd; shield in centre of tracery.  
✚ SIGILLVM : ROBERTI : DE : SWINBVRNE.  
Has Dodsworth missed the crosses which ought to be there? His shield is blasoned in *Parliamentary* roll of Ed. II *de goules a iij testes de sengler de argent crusule d'or*. In the same roll Sir Adam of Swinburne bears the same shield without the crosses.
745. SWINBURNE, SIR THOMAS OF Dods. 45, Fo. 49; A.D. 1382/83.  
Round, armorial, per fess three 'Bores heades coped.'  
No legend given.  
Deed relates to manor of Knaresdale.
746. SWINBURNE, THOMAS OF Dods. 45; Fo. 39<sup>r</sup>; A.D. 1391.  
Round, armorial, 'three swynes heads coped verye faire.'  
*sigillu' : thome : de : swinburne*.  
This may be the same seal as preceding but the description and drawing are different.
747. SWINBURNE, THOMAS OF P.R.O.; K.R.  $\frac{69}{1}$ , No. 295; A.D. 1398/99.  
Red, round, imperfect, armorial, crusilly three swines' heads coupéd and a label of three points.  
..... *swynburn* ..  
I suspect this is the same seal as the previous two seals which are probably wrongly described. The shield is blasoned for him in *Willeme's* roll of Richard II, *gules crusilly three boars' heads coupéd silver a label of three points gold*.
748. SWINBURNE, SIR WILLIAM OF Dods. 45, Fo. 50; A.D. 1352.  
Round, armorial, per fess three cinquefoils.  
No legend given.
749. SWINBURNE, WILLIAM B.M. Harl. Ch. 55 H.9; A.D. 1409.  
Red, round, 24 mm., quarterly I and IV, three swines' heads coupéd II and III a saltire engrailed.  
.... *willelmi : swynbourne*.  
He is styled keeper of Merk (?) castle in the marches of Calais. I am not able to trace him, nor to account for the quartering.
750. SWINHOE, WALTER OF P.R.O.; K.R.  $\frac{73}{2}$ , No. 22; A.D. 1379.  
Red, round, armorial, three swine in an engrailed border. Shield in tracery.  
✚ SIGILLVM-WALTERI-DE-SWYNHOW.  
Seal is used by Thomas of Ilderton, styled guardian of Berwick upon Tweed. Illustrated *Arch. Ael.* 3rd Ser. vi, pl. x, No. 9. See also N.C.H. I, 334. In *Jenyn's* roll, Robert Swinhoe bears *sable three swine passant silver*.

751. SWINHOE, WILLIAM *Arch. Ael. N.S. I, 30; A.D. 1388/89.*  
Round, a hunting horn between a crescent and a star.  
Styled son of William Swynhoe of Newcastle upon Tyne.
752. SYWARD, RICHARD *Dods. 49, Fo. 4; n.d.*  
Round, armorial, a cross flory.  
✚ SIGILLV': RICHARDI: DE: SYWARD.  
*Hodgson II, ii, p. 250, No. 13.*
753. TAILBOYS, LUKE *B.M. Harl. M.S. 1985, Fo. 273<sup>v</sup>; A.D. 1306.*  
Round, armorial, a saltire on a chief three escallops.  
✚ SIGILLVM: LVCAS: TAYLEBOYS.  
Deed dated at Newcastle upon Tyne. He was lord of Hepple, Northumberland, I.P.M. 10 Ed. II (1316/17). Pedigree *Surtees III, 254; Plantagenet-Harrison I, 514.* The blason is *silver a saltire gules on a chief gules three escallops silver.*
754. TAILBOYS, RALPH *B.M. Add. Ch. 16,149; A.D. 1592.*  
Red, round, 20 mm., armorial, a saltire charged with a martlet for difference, on a chief three escallops. Crest on a wreathed and mantled helm a demi ostrich (?) bearing a horse shoe in its beak.  
No legend.  
Styled of Thornton, Co. Durham, esquire. He was of Thornton Hall, near Darlington. See Pedigree, *Surtees III, 382.*
755. TAILBOYS, WALTER *P.R.O.; C.S. 104; A.D. 1410/11.*  
Brown, round, 32 mm., armorial, in a traceried panel a shield of arms a saltire, on a chief three escallops. The shield is couched and above it on a mantled helm with cap of estate, is the crest of a talbot.  
\* s. dn'i: walt'i: tailboys:  
Styled knight. He was son of Sir Henry Tailboys and Alianore Burradon, died 20 Sept., 1417. (*Surtees III, 154; Plantagenet-Harrison, 514.*) Shield blasoned for him in *Willement's roll of Richard II.*
756. TAILBOYS, WILLIAM *P.R.O. Exch. K.R. 1<sup>6</sup>/<sub>26</sub>, 73; A.D. 1312.*  
Red, round, 20 mm., armorial, a saltire on a chief three escallops.  
\* S' . . . . TAIL . . . .  
Styled of the Bishopric of Durham. He was lord of Hurworth on Tees and of Hepple; son of Luke Tailboys (No. 753) died 1364. References as above.
757. TAILBOYS, WILLIAM *B.M. Harl. Ch. 56, G.43; A.D. 1381.*  
Red, round, 20 mm., armorial a saltire on a chief three escallops.  
✚ S' WILLEELMI TAILLEBOYS.  
Used by Walter (No. 755), son of Alianore Tailboys, cousin and heir of Gilbert Umfraville. He was the son of Henry Tailboys, lord of Hepple and his wife Alianore daughter and heiress of Gilbert of Burradon (No. 129) by his wife Elizabeth, sister and heiress of Gilbert Umfraville, earl of Angus. References as above.

758. TALBOT, THOMAS P.R.O.; K.R.  $\frac{73}{2}$ , 34; A.D. 1385.  
Red, round, 25 mm., armorial three talbots.  
Styled guardian of Berwick on Tweed. This canting shield does not appear in any of the rolls of arms.  
**thomas. talbot.**
759. TEMPEST, SIR RICHARD P.R.O.; Exch. K.R.  $\frac{73}{1}$ , No. 3;  
A.D. 1347/48.  
Red, round, 24 mm. (?) imperfect, armorial a chevron between three birds (storm finches). The shield hangs from between two bushes. On its dexter is a visored and mantled helm with crest of a wreathed man's head, the sinister side is broken away but appears to be a like helm and head. (Seals, plate III.)  
S' . . . . . TEMPEST .  
He was much employed in the Scots' wars of the first three Edwards. Guardian of Berwick upon Tweed. (Pedigree *Plantagenet-Harrison, Yorks*, 104.)
760. TEMPEST, SIR RICHARD P.R.O.; Exch. K.R.  $\frac{73}{1}$ , No. 13;  
A.D. 1362.  
Red, round, 30 mm., armorial, a bend between six storm finches. The shield is couched and hangs from a mantled helm on which is the crest of a man's head, it is placed in a traceried panel. (Seals, plate v.)  
**sigillum ricardi tempest.**  
Probably the same man as previous. Styled knight.
761. TEMPEST, RICHARD P.R.O.; Exch. K.R.  $\frac{73}{2}$ , No. 34;  
A.D. 1386.  
Red, round, 22 mm., shield hangs from a mantled helm with cap of estate, a bend between six storm finches. Crest, a storm finch.  
**sigill: ricardi. tempest.**  
Son of the above, the shield is blasoned for him in the roll of *Richard II, silver a bend between six birds sable.*
762. TEMPEST, RICHARD Dods. N.S. 49, Fo. 244;  
A.D. 1387.  
Round signet, a storm finch perched on a cap of maintenance.  
**s' ricardi tempest**  
See *Surtees II*, 329 and note, where deed is printed.
763. TEMPEST, ROBERT *Arch. Ael.* N.S. I, 35; A.D. 1562/63.  
Round, signet, a storm finch standing upon a cinquefoil.  
Styled of Gretham.
764. TEMPEST, SIR THOMAS Dods. 59, Fo. 245; A.D. 1540.  
Round, armorial, quarterly I and IV a bend engrailed between

- six storm finches (Tempest); II and III crusilly a cinquefoil, a crescent in dexter chief for difference (Umfraville).  
 † S † THOME † TEMPEST † DE † HOMSET † MILITIS  
*Counterseal* in a lozenge with a border engrailed, a cinquefoil. Styled of Holmsett (Holmside). Pedigree *Surtees* II, 327. Dodsworth notes here 'A rime of this cinque foyle and martlett used in that Countrey'  
 'The martlett in the Cinquefoyle Noates  
 The Tempest's and Umframville's coates.'
765. TEMPYLMAN, ROBERT Waterford, 44.  
 Light brown, oval, 35×23 mm., imperfect, a crescent between two stars.  
 S' ROBERTI FIL RICARDV.  
 Styled of Horton. See N.C.H. IX, 244, note 2.
766. THIRLWALL, JOHN B.M. Harl. 1448, Fo. 55; A.D. 1369.  
 Round, armorial, a chevron between three boars' heads rased. Shield couched and above it a mantled helm with cap of estate on which is the crest of a boar's head.  
 No legend given.  
 Styled John Thirlwall Junior. (See *Northd. Visits.*, ed. Foster, p. 119. Pedigree *Hodgson* II, iii, 145.) The shield is blasoned in *Jenyn's* roll, *gules a chevron between three boars' heads couped silver*, for Ralph Thirlwall. Probably the arms derive from the canting shield of Swinburne.
767. THIRLWALL, RICHARD OF P.R.O.; L97; A.D. 1346 (?)  
 Red, round, 22 mm., armorial, a chevron between three boars' heads couped.  
 \* S' RICARDI : DE : THIRWALL.V . . .
768. THORNTON, ROGER Black Gate; A.D. 1439.  
 Red, round, 40 mm., imperfect, armorial, a chevron and a chief indented. The shield is couched and surmounted by a mantled helm on which is the crest of the head and wings of a dragon. Legend on a label surrounding.  
 .. gillu' : rogerus . . . . .  
 Styled of Nether Witton super aquam. See *Arch. Ael.* 3rd Ser., XIX, pp. 83/84.
769. TIBBETOT, JOHN P.R.O.; Exch. K.R.  $\frac{63}{3}$ , No. 63; 1345/46.  
 Red, round, 34 mm., armorial, a saltire engrailed. The shield is diapered and placed in fine tracery.  
 \* SI . . . I . . . IOH'N . . . . . BETOT :  
 Styled keeper of Berwick upon Tweed. See also *Hodgson* III, ii, 372. Blasoned for him in the roll of the Dunstable tournament, *d'argent ove un sautour engrele de goules*.

770. TILIOL, MAUD OF B.M. Harl. MS. 245, Fo: 120<sup>v</sup>; A.D. 1324.  
 Round, armorial, three shields their points meeting in the centre I,  
 Three chaplets (Lascelles) II Two bars (Hilton). III, a lion  
 debruised by a baston (Tiliol).

Legend not given.

She was the wife of Robert Tiliol, who died 1321, daughter and co-heiress  
 of Robert Lascelles of Illerby whose shield is No. 1. No. 2 is for  
 William Hilton, her first husband whom she married in 1298; he was  
 the second son of Robert Hilton, lord of Hilton, and ancestor of the  
 Hiltons of Swyne. Their son changed the bars of Hilton for the  
 chaplets of Lascelles. No. 3 is for her second husband Robert Tiliol.  
 See *Surtees* II, 26; *Ancester* IV, 94; *Durham Seals*, No. 2445, and  
 note 47.

771. TILIOL, ROBERT P.R.O. Anc. Deeds, L989; A.D. 1357.  
 Red, round, 26 mm., armorial, a lion rampant over all a baston.  
 × SIGILLVM-ROBERTI-DE-TVILVL.

Blasoned for him in *Powell's* roll of Edward III, *gules a lion rampant*  
*silver and a baston azure*. He died A.D. 1367. References as before.

- 771A. TRAYNES, EUDES OF Bowes No. 41; 13 Oct., 1286.  
 Green, oval, 31×21 mm., a stork.

✦ S. EDONIS-TRAYNES.

Given at Streatlam; relates to manors of Stainton and Streatlam near  
 Barnard Castle.

772. TREWICK, JOHN OF Woodman 9; A.D. 1307/08.  
 Brown, round, 18 mm., a chalice or cup draped with a cloth.

..... COSVE .....

For deed see *Arch. Ael.* 3rd Ser. v, p. 45, No. 9; and p. 53.

773. TREWICK, THOMAS OF *Arch. Ael.* 3rd Ser. I, p. 116; A.D.  
 1365.

Round, 27 mm., armorial, three bars, in chief three roundels.

× s. thome × × de × trewic .

See *Arch. Ael.* 3rd Ser. I, pp. 114 and 116. Also *Ibid.* N.S. xxiv, p. 255  
 No. 10.

774. TRILLESDEN, HAWIS OF Proc. N.C. Socy. Antq. 3rd Ser.  
 VI, p. 140; A.D. 1301.

Pointed oval, 25×21 mm., a flower of eight petals.

S'HAVWIS-D' TRILIDEN.

Styled daughter of Walter of Cockhou in Trillisdene. See also *Durham*  
*Seals*, Nos. 2462/65.

775. TUGHAL, HENRY OF P.R.O. Exch. K.R.  $\frac{16}{28}$ , No. 25;  
 A.D. 1322/23.

Red, round, very imperfect, a monster.

Legend destroyed.

See *Durham Seals*, No. 2471.

776. TWENGE, CATHERINE OF B.M. Harl. MS. 1985, Fo. 281<sup>v</sup>;  
A.D. 1342.  
Round, armorial, four shields, the points to the centre, I a fess between three popinjays (Twenge). II, a bend between six birds (Tempest). III, Quarterly a bend, a fret in the second and third quarters (Despencer). IV, a bend between six birds a label of five points (Tempest differenced).  
✦ SIGILLVM : CATHERINE·DE·TWENGE.  
I have included this because the second and fourth quarters are apparently Tempest but I cannot trace the lady. She is styled in the deed, formerly wife of William of Twenge.
777. TWENGE, MARMADUKE OF B.M. Harl. MS. 1985, Fo. 275<sup>v</sup>.  
Round, equestrian, knight in mail and loose surcoat with sword and shield of arms a fess between three popinjays.  
✦ SIGILLV' : MARMADVCI : DE : TWENGE.  
*Secretum*, round, armorial, a fess between three popinjays.  
S'.D'NI : DE : DANEBY.  
See also *Guisboro' Chart.* 1, 99 (Surtees Socy. Publ. No. 86) and Dods. VII, Fo. 57<sup>v</sup>, dated A.D. 1275. *Durham Seals*, No. 1708. The blason is, *silver a fess gules between three popinjays vert.*
778. TWISELL, ADAM OF C.H.H.B. detached seal.  
Brown, oval, 32×21 mm., Our Lady with Christ seated beneath a canopy, a tonsured monk prays to them.  
S'. ADE·DE·TVYSELE·MONACHI.
779. TYES, RAMETTE LA P.R.O. Anc. Deeds, L.S. 56; A.D. 1248.  
Natural wax, pointed oval, 42×32 mm., the lady standing in long gown with girdle, fur lined mantle and wimple. Her right hand holds her girdle, on her left wrist is a hawk with jesses.  
✦ DAME·RAMETTE·LA·TYEYSE.  
See N.C.H. II, p. 15, where seal is illustrated.
780. TYNDALE, ADAM OF Dods. 45, Fo. 8<sup>v</sup>; n.d.  
Round, armorial, a fess between three sheaves.  
No legend given.  
Dodsworth describes it 'a bar inter 3 chesse rookes ut videtur.'
781. TYNDALE, WILLIAM OF Greenwich 15L. 24 and 25; A.D. 1357.  
Red, round signet, a stag's head.  
See N.C.H. X, 249, note; Pedigree *ibid.* 251; *Durham Seals*, Nos. 2484/2493.
782. TYNEMOUTH PRIORY, RALPH PRIOR OF, see No. 244 in this catalogue.

783. TYNEMOUTH, PRIORY OF . . . . . Allendale deeds No. 3; A.D. 1380.  
Pointed oval, 30×26 mm., in the dexter of two niches of fine  
tabernacle work, Our Lady standing with the Child Christ, in  
the sinister a standing figure of St. Oswin, beneath is the prior  
praying.  
. . . . . DE: TINEMVTHA.  
See N.C.H. XIII, p. 122. This is a smaller seal and quite distinct from  
that illustrated No. 6, plate *Ibid.*
784. UFFORD, ROBERT OF (EARL OF SUFFOLK) . . . . . B.M. Harl. Ch.  
84B. II; A.D. 1355.  
Red, round, 35 mm., armorial, a cross engrailed the shield is  
placed in fine tracery and the field is diapered, above it is S  
between two leaves.  
\* S'.ROBERTI: DE: . . . . ORD: COMITIS: SVFFOLCH'  
*Hodgson* III, i, 84. He was the second lord Ufford created earl of  
Suffolk A.D. 1337, his second wife was Margaret daughter of Sir Walter  
Norwich and widow of Sir Thomas Cailly (*Off. Baron.* II, 431). Shield  
blasoned for him in the *Boroughbridge* and *Parliamentary* roll (No. 471)—  
*de sable a une crois engrele d'or.*
785. UGHTRED, THOMAS . . . . . B.M. Harl. 245, Fo. 150; A.D. 1353.  
Round, armorial, on a cross patonce five pierced molets. The  
shield is couched and upon a mantled helm is the crest of a  
sitting hound between a pair of stag's antlers each charged with  
four pierced molets.  
† SIGILLVM: THOME: VGHTRD.  
*Hodgson* III, ii, 372. The shield is blasoned for him in *Powell's* roll of  
Edward III, *gules on a cross patonce gold five pierced molets gules.*
786. ULCESTRE, ROBERT OF . . . . . Greenwich 101<sup>a</sup> No. 1; A.D. 1317.  
Red, round, 20 mm., a lion asleep at the foot of a tree upon  
which two birds are perched.  
\* S': ROBERTI: . . . . .  
See N.C.H. I, 198/203.
787. UMFRAVILLE, ALIANORE, see *Durham Seals*, No. 1728.
- 787A. UMFRAVILLE, ELIZABETH (COUNTESS OF ANGUS) . . . . . P.R.O.  
Exch. Q.R.  $\frac{3}{4}$ ; A.D. 1323.  
Green, round, three shields their points joined in the centre.  
Defaced and illegible.  
She was the widow of Gilbert Umfraville earl of Angus and younger  
daughter of Alexander Comyn earl of Buchan, she died Feb., 1328/29.  
(*Comp. Peer.* I, 148.) For document see *Bain* III, No. 818.
788. UMFRAVILLE, GILBERT (EARL OF ANGUS) . . . . . *Bain* II, pl. 2, No.  
15; c. A.D. 1290; B.M. Seal Cat. 17,010.  
Round, 26 mm., armorial, crusilly a cinquefoil.  
† S'GILB'TI-D'V'FRA'VILL'COMES-D'ANG. . . . .



- Son of Gilbert Umfraville lord of Prudhoe and Redesdale and his wife Maud countess of Angus; he died *circa* Oct., 1307, and was buried at Hexham Priory (*Comp. Peer.* I, 147). His shield is blasoned in the *Falkirk* roll—*de gules ou ung quintfoyl d'or, croisile d'or.*
789. UMFRAVILLE, GILBERT (EARL OF ANGUS) P.R.O.; L.S. 295;  
A.D. 1379.  
Red, round, 30 mm., armorial, crusilly a cinquefoil. The shield is in a cusped and traceried circle and has a slipped cinquefoil at each side of it.  
\* . . DNI : GILBERTI-DE-VMFRAMVILL'-COMIT-DE-A' . . .  
Succeeded his father Robert, A.D. 1331. His second wife was Maud Lucy who, after his death, married Henry Percy first earl of Northumberland. He died Jan., 1380/81 (*Comp. Peer.* I, 150).
790. UMFRAVILLE, INGRAM *Bain* II, pl. v, No. 4; A.D. 1291;  
*Ibid.*; II, No. 1363; A.D. 1303.  
Red, round, 24 mm., armorial, an orle ermine and a label of three points. A wyvern at each side of the shield.  
\* S'INGRAMMI-DE VMFRANVILE
791. UMFRAVILLE, INGRAM B.M. Seal Cat. 15,742; A.D. 1320.  
Cast, round, 30 mm., equestrian, knight in mail hauberk, surcoat, helm with fan crest, sword and shield charged with an orle ermine.  
S' ING. . . . DE. . V . . . . . TIS.  
Shield blasoned for him in *Charles* roll *gules an orle ermine a label of five points azure.* See also *Arch. Ael.* 3rd Ser. vi, p. 182.
792. UMFRAVILLE, MARGARET P.R.O. Duchy of Lancas. M, 37;  
A.D. 1328.  
Red, round, 28 mm., three shields of arms hanging by their straps from the branches of a tree, I, three chevrons and a label of three points (Clare); II, crusilly a cinquefoil (Umfraville), impaling a fess between two bars gemelle (Badlesmere); III, a saltire and a label of three points (Fitzgerald).  
\* S'MARGARETE : DE : VNFRANCVILLE : DAME :  
DE : BADELESMERE.  
See note on this seal and illustration see *Proc. N.C. Socy. Antq.* 3rd Ser. IV, p. 89. She was the eldest daughter of Sir Thomas Clare by Julian daughter and heiress of Maurice fitz Maurice fitz Gerald and married Gilbert Umfraville, eldest son of the first earl of Angus, after his death she married Bartholomew, lord Badlesmere, she died A.D. 1333 (*Comp. Peer.* I, 149).
793. UMFRAVILLE, ROBERT (EARL OF ANGUS) P.R.O. Exchq.  
K.R.  $\frac{1}{2}$  6, 69; A.D. 1323/24.  
Brown, round, 20 mm., imperfect, armorial, crusilly a cinquefoil.

The shield hangs from a tree and is placed in a quatrefoiled panel with a wyvern at each side.

Legend destroyed.

Styled earl of Angus. Second son of Gilbert, first earl of Angus, died 1324 (*op. cit.*).

794. UMFRAVILLE, ROBERT B.M. Harl. MS. 1985, Fo. 280;  
A.D. 1432.

Round, armorial, a cinquefoil in an orle of crosses patonce. The shield is couched and above it on a mantled helm is the crest of a cinquefoil. The helm is supported on each side by a wolf rampant holding a sword upright in the dexter paw.

\* *sigillum roberti umfravile militis.*

Son of the above Robert; K.G. and Admiral of England, died A.D. 1436. (*Surtees II, 325.*)

- 794A. UMFRAVILLE, ROBERT Streatlam Deeds No. 5; 26 April,  
1418.

Brown, round, imperfect, c. 27 mm., armorial, a cinquefoil in an orle of crosses crosslet. The shield, in tracery, hangs from the branches of a tree.

..... *umfravill.*

Same man as No. 794.

795. UMFRAVILLE, THOMAS P.R.O.; Exchq. K.R.  $\frac{68}{11}$ , 253;  
A.D. 1387.

Red, round, 30 mm., armorial, crusilly a cinquefoil. The shield is in tracery and hangs from the branches of a tree.

..... *ome:de:um* .....

Of Harbottle and Holmside, Co. Durham; see *Surtees II, 325*, and *Comp. Peer. I, 151*. See also *Durham Seals, No. 2511*.

796. VALENCE, AGNES DE B.M. Add. MS. 8157; Fols. 34 and  
34<sup>v</sup>; n.d.

Oval, full faced standing robed figure of Agnes holding in her right hand a shield of arms, barry an orle of martlets (Valence); in her left a like shield, a saltire (Fitzgerald), and holding in front of her a shield three bends and a label of three points (? Avesnes).

Legend not given.

She was the daughter of William de Valence, earl of Pembroke and widow of Maurice Fitzgerald when she married Hugh Baliol, lord of Bywell and of Barnard Castle; after his death she married John de Avesnes, lord of Beaumont. (*Clay, p. 6; Hodgson II, ii, 42. Rietstap Armorial Général blasons for Avesnes of Hainault—bandé d'or et de gules. Maurice Fitzgerald bore at the Siege of Calais (1345/46) silver a saltire gules.*)

797. VALENCE, AYMER DE (EARL OF PEMBROKE) P.R.O.; B.S.  
87; n.d.  
*Obverse*, green, round, 75 mm., equestrian, the earl in mail and surcoat, visored helm with scarf mantling and fan crest, sword and heater shaped shield of arms, horse trappings and shield emblazoned barry an orle of martlets. (Seals, plate vi.)  
ADOMARVS-DE-VALENCIA-COMES-PEMBROCHIE-DN'S-  
WEYS'·ET·DE·MONTINIACO·  
*Reverse*, same size, a shield of arms as on the obverse. The shield hangs from the branches of a tree, it is placed in a finely cusped octofoiled panel and a tree is on each side of it. (Seals, plate vi.)  
Legend as on the observe.
798. VALENCE, AYMER DE B.M. Seal Cat. 14,076; A.D. 1301.  
Cast, round, 29 mm., armorial, barry of fourteen an orle of martlets. The shield hangs from a tree's branches and upon each side of it is a branch with a martlet upon it.  
✚ SIGILL' ADEMARI: DE: VALENCE.  
He used this seal to the Baron's Letter. (*Foster*, No. A 50.)
- 798A. VALENCE, AYMER DE P.R.O.; A.S. 68; A.D. 1300; B.M.  
Cat. 14,077.  
Red, round, 28 mm., armorial barry of fifteen an orle of martlets. Above the shield is a leopard of England. The field of the seal on the dexter is powdered with lilies of France, on the sinister with trefoils and a fish. (Clermont-Nesle.)  
S-ADOMARI-COMITIS-PEMBRO . . .
799. VALENCE, AYMER DE P.R.O. Exchq. Q.R. 13, No. 27;  
A.D. 1314 (?).  
Red, round, 20 mm., imperfect, armorial, barry an orle of martlets.  
. . . ADOMARI . . . . .  
Styld Guardian of Scotland. Nos. 798A/799 are for the same man, the second Valence earl of Pembroke lord of Weysford and Montignac, he succeeded his father (No. 797) as earl of Pembroke, A.D. 1307, and died 1324. (*Off. Baron*. II, 9; *Pedigree Hodgson* II, ii, 41; N.C.H. VII, p. 234.)  
Shield blazoned in the *Parliamentary roll*—*Burule de argent et de azure od les meralos de goules*.
800. VALENCE, BEATRICE DE B.M. Add. Ch. 19,835; A.D. 1312.  
Red, round, 32 mm., armorial, barry an orle of martlets impaling by dimidiation, powdered with slipped trefoils, a fish. On the dexter side is a fleur de lis, on the sinister a leopard. All in a fine traceried panel.  
. . . . BEATRI . . . ALENC . . . EMBRO . . . E . . . WEIS'  
ET·DE·MOTINI:

She was the second wife of Aymer de Valence (Nos. 798 and 799), daughter of Raulof of Clermont-Nesle for whom the impalement is—*gules powdered with slipped trefoils two barbels paleways.*

801. VALENCE, JOAN DE P.R.O. Anc. Deeds, 11,554; A.D. 1300.

Green, round, 45 mm., armorial, barry vair and (gules) impaling by dimidiation, barry an orle of martlets. The shield is suspended from the branches of a tree and there is a bush at each side of it.

..... VM: SEC .....

Joan of Munchesnil wife of William de Valence, earl of Pembroke (No. 803). The first shield is that of her father Warin de Munchesnil.

802. VALENCE, WILLIAM DE B.M. Add. Ch. 20,290; A.D. 1266.  
Green, round, 45 mm., armorial, barry of sixteen an orle of martlets. A spray at each side of shield.

✦ SIGI . . . . GVILERMI-DE : VALENTIA : DOMINI :  
PENBROCHIE.

803. VALENCE, WILLIAM DE Merton Coll. 56; A.D. 1268.  
Green, round, 35 mm., armorial, barry an orle of martlets. (Seals, plate VI.)

✦ SIGILL' : GVIL'L : DE : VALENCE

He was half-brother of Henry III, created earl of Pembroke *circa* A.D. 1251, married Joan de Munchesnil (No. 801), died 13 June, 1296. (*Comp. Peer. loc. cit.*) This shield is blasoned for him in *Grimaldi's roll*—*burule dazure et dargent ove une ourle de merlez de goules.* His earlier shield appears to have been *barry silver and azure with a label of five points gules on each three leopards gold.* (B.M. Cott. Nero, D1, F170.)

804. VALOIGNES, HENRY OF B.M. Harl. Ch. 80, H.4; A.D. 1326.

Green, round, 23 mm., armorial, paly wavy.

\* S' : HENRICI-DE VALOINNES.

Blasoned in the *Parliamentary roll* for Sir Will. de Valognes *oundee de long de argent et de goules.*

805. VAUX, ADAM Greenwich 103/13; A.D. 1361.  
Round, 23 mm., armorial, on a bend . . . . . (?)

Legend obliterated.

See Pedigree N.C.H. IV, 202.

806. VAUX, JOHN Dods. 49, Fo. 26; A.D. 1425.  
Round, armorial a bend (? checky or lozengy) in the sinister chief a bird.

✦ SIGILLVM : IOHIS : DE : VAUX :

Styled of Birdoswald.

807. VERNON, ESMOND Dods. 45, Fo. 103<sup>v</sup>; A.D. 1361.  
 Round, armorial, a bend and a label of five points. Shield couched and above it, on a mantled helm, the crest of a horse's head.  
 No legend given.  
*Hodgson* II, ii, 334, note 3a.
808. VESCI, EUSTACE DE Liber de Melros pl. x, No. 4.  
 Round, 65 mm., a vetch plant with seed pods, a wyvern at each side, above, in the field, an ancient gem is inset.  
 † SIGILLVM : EVSTACIVS : DE : VESCI.  
*Secretum* oval, an ancient gem (? an antelope or goat) surrounded by four vetch pods.  
 † SIGILLVM : EVSTACIVS : DE : VESCI.  
 For pedigree see Tate's *History of Alnwick*, I, 402. Document *Liber de Melros*, I, No. 168.
809. VESCI, JOHN DE Liber de Melros pl. x, No. 7 circa;  
 A.D. 1260.  
 Round, 50 mm., armorial, a cross, the field of shield is diapered, it is in a geometrical figure with a vetch plant at each side.  
 SIGILL . . . IOHANNIS : DE : VE . . .  
 Document printed *Ibid.*, vol. II, App. No. 22. Seal is B.M. Cat. No. 17,024.
810. VESCI, JOHN DE Bain II, 488; A.D. 1291.  
 Red, round, 28 mm., armorial, a cross and a label of five points.  
 The shield is in a sexfoiled panel.  
 † SIGILLVM-IOHANNIS-DE-VECI .  
 One of the competitors for the Scottish crown. Seal illustrated *Arch. Ael.* 3rd Ser. VI, p. 176. The blason is *gold a cross sable*.
811. VESCI, JOHN DE B.M. Harl. MS. 245, Fo. 123; n.d.  
 Round, armorial, a cross patonce.  
 S : IOHANNIS-DE : VESCY  
 Deed is a grant to Robert Percy of 'Pertrehall' in York. Blason *gules a cross patonce silver*.
812. VESCI, MARGERY DE Liber de Melros x, No. 5.  
 Oval, 46×30 mm., a lacertine beast eating a vetch pod, a vetch pod is at each side of it.  
 † SIGILL : [MAR]GARIE-DE-VESCI.  
 Document *Ibid.* I, No. 288. She was a natural daughter of William the Lion, wife of Eustace de Vesci (No. 808).
813. VESCI, WILLIAM DE Liber de Melros pl. x, No. 6; c.  
 A.D. 1220.  
 Round, 50 mm., armorial, a cross patonce; in the field above the shield and on each side of it is an ancient gem.  
 † SIGILLVM : WILELMI : DE : WESCY  
 This is the same seal as *Durham Seals*, No. 2540, but that impression is so poor that the gems were not seen.

814. VESCI, WILLIAM DE B.M. Harl. Ch. 57C. 34; A.D. 1295.  
Red, round, 26 mm., imperfect, armorial, shield in a cusped panel,  
a cross, a semi fleur de lis above and at each side of shield.  
‡ SECR[ETVM]: WIL . . . MI: DE: VECCI.
815. VIPONT, IVO DE D'Anisy Charts. Normands, pl. xiii,  
Nos. 10 and 11.  
*Obverse*, round, 70 mm., equestrian knight in mail bearing on his  
left arm a shield of arms, nine rings.  
. . . . . IVONIS: DE: VETERI PONT . . . .  
*Reverse*, round, 35 mm., armorial, nine rings.  
‡ S'IVONIS: DE.VETERI PONTE .  
See Pedigree *Hodgson* II, iii, 27.
816. VIPONT, JOHN DE Greenwich 64<sup>a</sup>, No. 3; A.D. 1376.  
Round, 26 mm., very imperfect, armorial, six (?) rings. Shield  
surmounted by mantled helm with undecipherable crest.  
Legend destroyed.  
Styled lord of Alston Moor. Blasoned for him in *Powell's* roll of Edward  
III, *gold six rings gules*.
817. VIPONT, MAUD DE D'Anisy Chartres Normand, pl. x,  
Nos. 21 and 22.  
*Obverse*, oval 52x36 mm., the robed standing figure of a lady,  
a hawk on her left wrist.  
‡ SIGILL'·MATILDIS·DNA: DE·CVERVILLE.  
*Reverse*, shield shaped, thirteen rings.  
No legend.  
*Hodgson* II, iii, 26.
818. WAKE, BALDWIN Balliol D6/29; n.d.  
Green, round, 27 mm., armorial, six shields in a circle their points  
to the centre, each charged with two bars and in chief three  
roundels.  
‡ SIGILL': BALDWINI: WAKE.  
He was son and heir of Hugh Wake of Blisworth, and of Liddel, Cumber-  
land, by Joan, daughter and heiress of Nicholas Stutteville, he died  
*circa* 1282.
819. WAKE, THOMAS P.R.O. Anc. Deeds L.964; A.D. 1310.  
Red, round, 28 mm., armorial, two bars and in chief three roundels,  
shield in geometrical tracery.  
‡ SIGILLVM·THOME·WAKE·DOMINI·DE·LIDEL.  
Son of John Wake of Liddel and grandson of above Baldwin. The shield  
is blasoned for his father in the *Falkirk* roll—*d'or ou ii fesses de goulez  
ou iij tortous en le chief*. His shield appears over the gateway of Bothal  
castle (*Comp. Peer.* VII, 35; *Arch. Ael.* N.S. XIV, 289).

820. WALLINGTON, LUCY OF *Arch. Ael. N.S. 1, 35; A.D. 1308.*  
Pointed oval, a crescent enclosing a star.  
S' A . . . . . LONDIN .  
Used by her; document *ibid.*
821. WALTON, ADAM OF *Dods. 49, Fo. 7<sup>r</sup>; A.D. 1354.*  
Round, armorial on a lozenge, three crosses crosslet fitchy and a chief.  
✠ S : ADE-DE-WALTON.  
This is among the north country deeds copied by Dodsworth, but I cannot trace him nor blason the shield. A Sir Adam Walton is among the north country Knights in the *Parliamentary* roll, but he bore *silver a cross paty sable and a border indented gules.*
822. WARD, JOHN *Morpeth No. 17 Henry VI; A.D. 1451.*  
Red, round, 26 mm., armorial a bend cotised.  
No legend.
823. WARDE, SIMON *Ex. Q.R. Misc. 3<sup>e</sup>/<sub>3</sub>; A.D. 1314.*  
Green, round, 26 mm., a cross patonce (or paty).  
Legend illegible.  
Styled warden of Berwick upon Tweed, the shield is blasoned for him in the *Parliamentary* roll—*de azur a une crois patee de or.*
824. WARWICK, JOHN EARL OF (VISCOUNT LISLE) *Dods. 49, Fo. 1; A.D. 1550.*  
Round, device, a lion passant surrounded by the Garter with motto  
HONI : SOIT : QVI : MAL : Y : PENSE.  
Document refers to Manors of Birtley and Barrasford. John Dudley, Viscount Lisle created earl of Warwick, 18th Feb., 1548/49, Duke of Northumberland, 11th Oct., 1551, beheaded 22 Aug., 1553. See No. 234.
825. WASHINGTON, WILLIAM OF *Deed, Penes Duchess of Norfolk; A.D. 1346.*  
Red, round, armorial, two bars in chief three molets. Shield in geometrical tracery.  
. . . WILLI . . . . .  
Document is a grant of Halton Flechan, Westmoreland, to William Norton. Given at Wessington.
826. WASHINGTON, WILLIAM OF *Dods. 70, Fo. 30; A.D. 1349.*  
Round, armorial, two bars in chief three molets. Shield in an eight foiled panel.  
✠ SIGILL' : WILL'I : DE : WESSINGTON .  
Styled son of Walter of Wessington. This may be the same seal as the previous one.
827. WASHINGTON . . . . . *Deed penes Duchess of Norfolk; A.D. 1433.*

Signet, in an octagon border, a shield of arms two bars, in chief three molets.

No legend.

Used by Richard Garesdall, clerk of Kirkby Kendal. For blason of shield and other seals of family see *Durham Seals*, Nos. 2505/09.

- 827A. WAUTON, JOHN OF B.M. Add. Chart. 33,142; A.D. 1375;  
Cat. 14,318.

Red, round, very imperfect, armorial, a chevron.

.... *de x wa* ....

See *Hodgson* III, i, 73, N.C.H. v, 254.

- 827B. WAUTON, THOMAS OF B.M. Add. Chart. 21,029; A.D.  
1401; Cat. 14,319.

Red, round, 21 mm., imperfect, armorial, a chevron, a ring in the dexter chief. All within tracery.

✠ SIGILLVM : THOME : DE : WAVT . . . .

See *Arch. Ael.* 3rd Ser. XIX, 87.

828. WAUTON, WILLIAM OF B.M. Harl. Ch. 48, E.52; A.D.  
1388; Cat. 14,320.

Red, round, 29 mm., armorial, a chevron, shield in a traceried and cusped panel.

\* SIGIL . . . . ELMI .DE.WAVTONE .

829. WAUTON, WILLIAM OF P.R.O. A142; A.D. 1390.

Red, round, 28 mm., armorial, a chevron and a label of three points. The shield hangs from a bush and is in a traceried panel.

*sigill' : willi' : de : wantune : militis.*

For account of family see Eyton's *Shropshire*, 180/83 Whitaker's *Richmondshire* II, 98. They held the manor of Brotherwick near Warkworth. The blason is *silver a chevron sable*.

830. WELLES, ADAM OF P.R.O. Baron's Letter No. A37; A.D.  
1301.

*Obverse*, green, round, 68 mm., armorial, a double tailed lion rampant. The shield hangs from a tree's branches and a branch of foliage is on each side of it.

✠ SI[GILL]VM : D[OMINI] : ADE : DE : W[EL]LE.

*Reverse*, round, 23 mm., same as obverse in miniature a lacertine beast is on each side of the shield.

✠ SIGILLVM : ADE : DE : WELLE.

Manor of Ellington; *Hodgson* II, ii, 196 where there is a pedigree. At the battle of Falkirk he bore—*d'or ou ung leon rampant de sable a la couve fourche*. His banner at Caerlaverock bore the same charges. (*Pedigree Comp. Peer.* VIII, 75.) Facsimile of seal Foster's *Feudal Lords*, p. 119.



831. WELLES, JOHN OF B.M. Harl. Ch. 57G. No. 12; A.D. 1359.  
Red, round, 26 mm., armorial, a double tailed lion rampant in a  
sexfoiled traceried panel.  
✦ SIGILLVM : IOHANNIS : DE : WELLE.  
Grandson of the above Adam, died A.D. 1361.
832. WELLES, JOHN OF B.M. Harl. Ch. 57G. 16; A.D. 1373.  
Red, round, 26 mm., armorial, a double tailed lion rampant. The  
shield is couched, above it is a mantled helm with cap of estate  
on which is the crest of a double tailed standing lion. All in a  
traceried panel.  
\* sigillu' x iohannis x de x welles.  
Son of the above, died A.D. 1421.
833. WELTON, RICHARD OF (?) Detached Seal, C.H.H.B.  
Light brown, round, 18 mm., armorial, a cinquefoil in chief a demi  
lion rampant.  
\* S'RICARDI . . . . LD . . . .  
See *Durham Seals*, No. 2600 and note.
834. WELTON, SIMON OF Lord Allendale's deeds, No. 7;  
A.D. 1421.  
Round, 24 mm., a cinquefoil in chief a demi lion rampant.  
sigill' . simonis : de : weltdene.  
The same seal is used Greenwich deeds, 15L. 35; A.D. 1408; deed printed  
N.C.H. x, 452, No. 10.
835. WENDOUT, ROBERT Merton No. 479 and 491; A.D. 1491.  
Description lost.
836. WETEWANG, WALTER OF P.R.O.; W.S. 31; A.D. 1346/47.  
Red, round, 26 mm., armorial, a saltire engrailed on a chief three  
sheaves.  
\* SIGILLVM : WALTERI : DE : WETEWANG  
I doubt if he was of the Northumbrian family of Dunstan (N.C.H. II, 189),  
but the Visitation shield is not that of any 14th century man. (*Visits. of  
Northd.*, 124.)
837. WHETHAMSTEDE, JOHN OF (PRIOR OF TYNEMOUTH) Lord  
Allendale's deeds No. 4; A.D. 1393.  
Oval, above in a traceried niche, a crowned demi figure of St.  
Oswin, holding a palm in his right hand; beneath in a pointed  
oval compartment is the prior praying.  
ORO . ET . . . . . VETET.  
See N.C.H. VIII, 123.
838. WHICKHAM, ALICE OF Brand 1, 465; Note v.  
Green, round, device a flower.  
S . ALICIE . DE . . . . .  
Document printed *ibid.*

839. WHITCHESTER, ROGER OF P.R.O. Anc. Deeds; B.3081/84;  
A.D. 1253.  
Brown, oval, very imperfect, ancient gem, an animal (?).  
Legend obliterated.
840. WHITEVED, ALAN OF Dods. 45, Fo. 46<sup>v</sup>; A.D. 1358.  
Round, armorial, two bars, the shield is in a traceried panel.  
Legend not given.  
The deed says that William de Tyndale and Alan de Whiteved have affixed their seals to it.
841. WHITEHEVED, ALAN OF Waterford 153; A.D. 1371.  
Red, round, 20 mm., imperfect, St. John Baptist standing holding the Holy Lamb, a tree at each side of him.  
S' IO . . . . DE . . . .  
Used by Alan.
842. WHITTON, GEOFFREY OF Greenwell deeds, uncatalogued  
*circa* A.D. 1175.  
Brown, round, 50 mm., very imperfect, equestrian, knight in mail hauberk, conical peaked helm, long kite shaped shield with central boss and a spear in his right hand.  
Legend destroyed.
843. WIDDRINGTON, GERARD OF Dods. 45, Fo. 94; A.D. 1361.  
Round, armorial, quarterly a baston.  
Legend not given.
844. WIDDRINGTON, ROGER OF Dods. 49, Fo. 43<sup>v</sup>; A.D. 1280.  
Round, armorial, quarterly a baston.  
✚ S'.ROGERI: DE: WODDRINGTON .
845. WIDDRINGTON, ROGER OF B.M. Eger. Ch. 567; A.D. 1345.  
Red, round, 26 mm., armorial, quarterly a baston.  
✚ SIGILL'.ROGERI.DE.WIDDRINGTON.  
Styled brother of Gerard of Woddrington, knight, of Northumberland.
846. WIDDRINGTON, ROGER Selby; A.D. 1453.  
Round, 26 mm., the gateway of a castle.  
His seal as Sheriff. Widdrington pedigree *Hodgson* II, ii, 230. See also *Durham Seals*, Nos. 2651/54 and note 147.
847. WILLIAM Dur. Tres. 1-2 Spec. 14; A.D. 1234.  
Green, oval, 27×24 mm., ancient gem, a lion walking.  
✚ SIGILL'.W: M: LL':  
Styled chaplain of Bamburgh.
848. WYBERYTH, WILLIAM OF Dods. 45, Fo. 77<sup>v</sup>; A.D. 1399.  
Round, armorial, three escallops.  
No legend given.  
This is attached to a deed among those of Northumberland. I am unable to trace him or blason the shield which is probably a differenced one of Dacre.

849. WYCLIFFE, ROBERT OF Cast B.M. 14,611; A.D. 1421/22.  
Cast, round, 26 mm., armorial a chevron between three crosses  
crosslet. The shield is in a traceried panel and hangs from the  
branches of a tree.

**sigillu' . roberti . de . wyclif . cl'i.**

See *Durham Seals*, No. 2716 and note 170.

850. YELAND, RICHARD OF B.M. Harl. MS. 1985, Fo. 275<sup>v</sup>; n.d.  
Round, armorial, a fess.

**† SIGILLVM : RICARDI-DE-YELANDE.**

See *Durham Seals*, Nos. 2724/27. Pedigree *Surtees* 1, 273.

### ADDENDA.

851. ALNWICK, CHANTRY AT Deed belonging  
to Charles Clay, Esq.  
Oval, red, Our Lady standing with the  
child Christ.

**S' : CANTARIE : DE : ALNWyK.**

852. DURHAM, SEE OF (SEDE VACANTE) Deed  
belonging to Miss Edleston; A.D.  
1576.

*Obverse*, round, yellow, equestrian Queen  
Elizabeth seated side saddle holding a  
sceptre in her right hand a slipped rose  
in her left. Behind the horse is a shield  
of the royal arms, ensigned by a  
coroneted mitre.

**† . . . . . ANGLII-FRANC-ET-HIB-REGINA-FIDEI-  
DEFENSOR-ETC.**

*Reverse*, a shaped shield of arms France and England quarterly  
ensigned of the royal crown.

**† SIGILLVM-REGINA-ELIZ-P-VA-EPATVS-DVNELM.**

This seal is illustrated and the document printed in *Newcastle Ant. Procs.*  
4th Ser. I, 145.

853. FITZ HUGH, SIR GEOFFREY Clairambault<sup>1</sup> No. 3624;  
31 Dec., 1419.



<sup>1</sup> *Inventaire des Sceaux de la Collection Clairambault a La Bibliotheque Nationale* par G. Demay. Consists of a very large number of deeds with seals attached (227 volumes) connected chiefly with the Hundred Years War and the English occupation of Normandy. There are therefore a considerable number of English seals, amongst them the following of Northumberland.



Round, 35 mm., armorial, fretty and a chief, the shield is couched and above it, on a mantled helm with coronet, is the crest of a demi dragon, supporters two griffons.

s. dñi. galf . . . fitz bugb. militiis.

854. FITZ HUGH, SIR GEOFFREY Clairambault No. 3625;  
29 July, 1429.

Round, 32 mm., same as No. 853 but smaller.

Legend destroyed.

In deed No. 853 he is styled Lieutenant of his father Henry Fitz Hugh, captain of Falaise. In No. 854 he is styled knight (chevalier). He was a younger son of Henry lord Fitz Hugh of Ravensworth (No. 296), who died at Ravensworth, 11 Jan., 1424/25, and whose Inquest P.M. (Northumberland), was held 14 April, 1425, when he was found to have held in fee tail various tenements in Longhirst, Old Moor, Ashington, Chevington, Mowick and Reaveley, by gift and feoffment of John Bulmer and Tiphaine, his wife. Geoffrey died before 3 June, 1436 (*Comp. Peer.* v, 661, and pedigree p. 668).

855. GREY, HENRY, EARL OF TANCARVILLE Clairambault, No. 8801;  
12 Oct., 1440.

Round, 48 mm., armorial, quarterly I and IV a lion rampant in a border engrailed; II and III a lion rampant over all an escucheon of pretence, a border bezanty. The shield is couched and above it is a mantled helm with crest of a ram's head—Supporters two griffons.

. . . . el. henry gray . . . . .

856. GREY, HENRY, EARL OF TANCARVILLE Clairambault No. 8802;  
26 Dec., 1440.

Round, 56 mm., armorial as No. 855, only larger and the escucheon described as plain and without supporters.

. . . . enry g . . . . le de . . . .

In No. 855 he is styled earl of Tancarville; in No. 856, earl and captain of Tancarville. He was son of Sir John Grey and grandson of Sir Thomas Grey of Heton (Raine, 326). His father was created earl of Tancarville in Normandy (one of the Anglo-Norman earldoms created by Henry v; a list of them is given in *Comp. Peer.* 1st ed. III, p. 292 note), 31 Jan., 1419, and was killed at Beaugé, 22 Mar., 1421. His mother was Joan, daughter and coheirress of Edward, lord Cherleton of Powys. His wife was Antigone, natural daughter of Humphrey, duke of Gloucester; he died 15 Jan., 1450. Tancarville was lost by the English in 1449 (*Comp. Peer.* 1st ed. VI, 290; VII, 365; *Off. Baron. Angl.* III, 510). The shield bears in quarters I and IV the arms of Grey of Heton, *gules a lion rampant in a border engrailed silver*; Quarters II and III bear the shield of Cherleton of Powys *gules a lion rampant gold*; the shield carried in pretence according to Doyle (*Off. Baron.* II, 511), should be blazoned *silver an inescucheon purple voided of the field within an orle of martlets gules*.

857. GREY, SIR JOHN Clairambault No. 4230; 2 Nov., 1433.  
Round, 44 mm., armorial, a lion rampant in a border engrailed.  
The shield is couched and above it is a mantled helm with crest  
of a ram's head. Supporters two lions, the field is diapered with  
leaves or flowers.

*sigillum joban . . .*

858. GREY, SIR JOHN Clairambault, No. 4231; 24 Aug., 1434.  
Round, 38 mm., armorial like No. 857 but a little smaller.

*sigillu' · jobannis · grey ·*

859. GREY, SIR JOHN Clairambault No. 4232; 20 June, 1438.  
Round, 40 mm., armorial, very similar to the preceding two.

*s · jo . . . . gray*

In each of these documents he is styled knight (chevalier) and captain of  
Exmes. He was a younger son of Sir Thomas Grey of Heton, who was  
executed at Southampton in 1415 (Pedigree Raine, 326).

860. GREY, RALPH Clairambault No. 4233; 30 Sept., 1441.  
Round, 37 mm., armorial, a lion rampant in an engrailed border.  
The shield is couched and above it, on a mantled helm, is the crest  
of a ram's head, supporters two griffons or like beasts.

*s dni radulph . . . gray · milit.*

Styled knight, captain of Mantes. This is apparently Sir Ralph Grey of  
Heton and Chillingham, who married Elizabeth Fitz Hugh and who with  
his wife is buried in the magnificent tomb in Chillingham church (Raine,  
326; Clay, 88; Newcastle Records Series, vol. iv. p. 116).

861. REDHUGH, THOMAS Clairambault No. 7624; 20 July, 1432.  
Round, 31 mm., armorial, three cock's heads rased. The shield  
is couched and above it is a mantled helm with crest of a Moor's  
head.

*sigillum · thome redhugh.*

He is styled esquire and captain of Lisieux. From his arms it would appear  
that he was of the family of Redheugh, near Gateshead on Tyne, but  
according to the pedigree the last Thomas Redheugh died in 1420. (*Surtees*  
II, 132.)

862. TAILBOYS, SIR WALTER Clairambault No. 8764; 22 April,  
1430.

Round, 50 mm., imperfect, armorial a saltire, on a chief three  
escallops. The shield is couched and above it is a mantled helm  
(crest destroyed) supporters two wolves.

Legend destroyed.

He is styled knight and captain of the men at arms at Mantes. He was the  
son of Sir Walter Tailboys (No. 755), he fought at Agincourt and died  
13 April, 1444. The wolves are like the supporters used by Sir Robert  
Umfreville (No. 794), his kinsman and probably refer to that family  
legend. (Pedigree *Plantagenet-Harrison*, York., p. 515.)

863. WILLOUGHBY, ROBERT LORD Clairambault No. 9691;  
25 Nov., 1427.  
Round, 44 mm., armorial, quarterly I and IV a cross engrailed (Ufford); II and III a cross moline (Bek). The shield is couched and above it upon a mantled helm is the crest of a Soldan's head. On a scroll in the field *en bon espoir*  
... *roberti. de . . . dni de eres . . .*
864. WILLOUGHBY, ROBERT LORD Clairambault No. 9692;  
20 July, 1432.  
Round, 54 mm., armorial; like No. 863 but larger.  
... *robert . . . wylughby. dni. de . . .*
865. WILLOUGHBY, ROBERT LORD Clairambault No. 9693.  
Round, 55 mm., very like to No. 864.

*sigillum. roberti. de. wylughby. dni. de. eresby.*

In No. 863 he is styled baron and lord of Willoughby, lately captain of Rouen. In No. 864 he is called earl of Vendome and of Beaumont, lieutenant of the duke of Bedford in the bailiwicks of Caen, Cotentin and Alencon. In No. 865 his style is baron and lord of Willoughby, captain of Pont-de-l'Arche. He was the sixth lord Willoughby of Eresby, he fought at Harfleur, Agincourt and Verneuil, made K.G. in 1416. Dugdale says that in 1431 he bore the title earl of Vendosme and Beaumont, lord Willoughby of Monblay and Beaumesguil. He died 25 July, 1452 (*Comp. Peer.* 1st ed. VIII, 142).

## SUPPLEMENT.

Being (I) some seals in the Treasury of the Dean and Chapter of Durham omitted from the previous catalogue;<sup>1</sup> (II) some seals and casts in the Library at the Black Gate and (III) seals and casts belonging to the author.<sup>2</sup>

### ABBREVIATIONS OF REFERENCES.

Dur. Treas.	Treasury of the Dean and Chapter of Durham. With references as in the previous catalogue.
B.G.	Black Gate Library and Museum.
C.H.H.B.	Belonging to the author.
B.G. Brum.	Seals attached to the Brumell deeds in the Black Gate Library.

<sup>1</sup> *Arch. Ael.* 3rd Ser. vols. VII to XVII.

<sup>2</sup> Seals already described either in *Durham Seals* or *Seals of Northumberland and Durham* (*Arch. Ael.* 3rd Ser. vols. XX and XXI) are not included here.

## ROYAL SEALS.

1. EDWARD III (second seal of absence) Dur. Treas. Misc.  
 5498; A.D. 1342.  
 Green, round, 115 mm.  
*Obverse*: Edward robed and crowned holding sceptre in right hand and orb with cross in left, seated on a throne with panelled back and canopy of Gothic tracery. On each side is a niche in which hangs a shield of arms France (ancient) and England quarterly; above each of these niches is a half length figure of a man at arms. On each side of the throne is a sitting lion.  
 † EDWARDVS : DEI : GRACIA : REX : FRANCIE : ET :  
 ANGLIE : ET : DOMINVS : HIBERNIE : .  
*Reverse*: equestrian, Edward in skirted armorial jupon over mail, visored helm with cap of maintenance and lion crest. Sword in hand fastened by chain to his breast. His horse covered with armorial trappings, gallops to the sinister over hilly ground. His shield, jupon and horse caparison bears the arms as on the obverse. The legend begins with the hand of God blessing. It is the same as on the obverse.  
 This seal was used during Edward's various absences in France between 1340 and 1360. See Wyon *The Great Seals of England*, Nos. 59, 60.
2. EDWARD III (fourth seal of presence) Dur. Treas. 2-3 Reg.  
 Nos. 2, 5 and 8; 1-4 Reg. Nos. 8, 9 and 18; 4-1 Sacr. No. 2;  
 Misc. 1483.  
 See *Durham Seals* No. 3031 where it is fully described. I give it here in order to put on record the examples at Durham.
- 2A. EDWARD III (Brétigny seal) Dur. Treas. 1-3 Reg. No. 11;  
 1-4 Reg. Nos. 4 and 7.  
 See *Durham Seals* No. 3032 where the same seal with name altered to 'Richard' is fully described but Richard uses the legend as on next seal.  
 edwardus : dei : gracia : rex : anglie : dn̄s : bibernie :  
 et : acquitanne :
3. EDWARD III (fifth seal) Dur. Treas. 2-3 Reg. Nos. 5 and  
 6; 1-4 Reg. No. 1.  
 This is the same as previous seal with altered legend as used by Richard II (*Durham Seals*, 3032).  
 edwardvs : dei : gracia : rex : francie : et : anglie : et :  
 dn̄s : bibernie .  
 This seal was used by Edward from A.D. 1372-1377.

4. EDWARD III (privy seal) Dur. Treas.; Misc. 5382; A.D. 1345.  
Red, round, 29 mm., three leopards, a fleur de lis at each side of the shield.  
× SECRETVM : REGIS : EDWARDI.  
Illustrated Plate E, *Arch. Ael.* 3rd Ser. vol. xvii.
5. EDWARD III (lands beyond Tweed) Dur. Treas.; Misc. 969;  
A.D. 1373.  
*Obverse*: brown, round, 76 mm., within a cusped sixfoiled panel diapered with foliage, a shield of arms, England (three leopards), a wyvern is at each side of shield.  
✦ EDWARDVS.DEI.GRACIA.REX.ANGLIE.DOMINUS.  
HIBERNIE.ET.DUX.AQUITANIE.  
*Reverse*: in a like panel, a bear standing in front of a tree.  
✦ SIGILLV.DNI.EDWARDI.DEI.GRA.REX.ANGLIE.PRO.  
TERRAS.ULTRA.TWEDAM.  
Similar seals to this were used by the first two Edwards. (See B.M. Seal Catalogue Nos 750/54.)
6. HENRY VI (?) (lands beyond Tweed) B.G.  
*Obverse*: light brown, round, 86 mm., imperfect, armorial France (modern) and England quarterly. The shield is ensigned by the royal crown and is placed in a cusped sixfoiled panel, in each of the spandrils is a rose. The field is finely diapered.  
X ben . . . dei . gra . . . . . et francie : et : dominus : bibernie .  
*Reverse*: a bear standing in front of a tree with spreading branches.  
Within a like sixfoiled panel.  
X sigillum . dn'i . henrici . dei . gra . reg' . anglie . et . francie  
et . dn'i . bibernie . de terra . sua . ultra . tweeda' .  
This seal is appended to a letter patent of Elisabeth dated A.D. 1587. The seal is I think either that of Henry V or VI.
7. ELIZABETH (second seal) B. G. Brum., 11 May, 1594.  
Round, 145 mm., whitey brown wax.  
*Obverse*: the queen, seated on a throne with arms and a high back, her feet resting on a cushion embroidered with fleurs de lis. Her hair is gathered in a coif and upon it is a small crown, round her neck is a large ruff. Her dress fits tight to the waist with large sleeves gathered in at the wrist, the skirt is very full with stiff folds. On her shoulders is a jewelled collar, or tippet, fastened at the breast by a brooch, from which falls a loose mantle which is upheld at each side by a hand and arm issuing from clouds. A necklace lies over the mantle and falls to her waist. She holds a sceptre with fleur de lis in her right hand, the orb with cross in her left. In the field at each side of the throne is a shield of arms bearing France and England quarterly, surrounded with the



Garter and motto and ensigned with the royal crown, above at each side is the double Tudor rose.

ELIZABETHA ❀ DEI ❀ GRACIA ❀ ANGLIE ❀ FRANCIE ❀  
ET ❀ HIBERNIE ❀ REGINA ❀ FIDEI ❀ DEFENSOR

*Reverse*: the queen on horseback walking to the dexter. Her costume is like that on the obverse the mantle being absent. She is seated on a side saddle, the square saddle cloth, with a tassel at each corner hangs below her dress. She holds a light sceptre in her right hand and in her left a small orb with cross. Above her head is an arch of clouds from behind which the suns rays shine downwards. In the field on the dexter in front of the Queen is a crowned Tudor rose, behind her on the sinister is a crowned fleur de lis with a crowned harp behind it. Flowers spring beneath the horse and in front and behind him is a rose growing on a leaved plant.

ELIZABETHA·DEI·GRACIA·ANGLIE·FRANCIE·ET·  
HIBERNIE·REGINA·FIDEI·DEFENSOR·

This, Elizabeth's second seal, was in use from A.D. 1587 to 19 July, 1603, when it was defaced at Hampton Court in the presence of James I (Wyon p. 78). It is considerably larger and of finer design than her first seal (*Durham Seals* No. 3059), and gives a very detailed and faithful picture of the Queen's costume. On the reverse the harp, the emblem of Ireland, appears for the first time on a royal seal. This seal is Wyon's plate XXIII. The document is No. 29 Brumell Charters calendared *Arch. Ael.* 2nd Ser. xxiv, p. 120.

8. ELIZABETH (treasury seal) B. G. Brum. 24; 24 June, 1563.  
Round, 96 mm., dark brown wax.

*Obverse*: The Queen robed and crowned seated on a canopied throne, holding in her right hand a sceptre with fleur de lys, in her left an orb with cross. The upper part of the field is diapered with lozenges enclosing a rose and a fleur de lys alternately. The lower part is similarly diapered but in a smaller pattern representing the dais upon which the throne stands. Beneath this dais are the letters E. R.

ELIZABETH·D'·GRA·ANGLIE·FRANCIE·ET·HIB'NIE·R·  
FIDEI·DEFENSOR·

*Reverse*: On a cartouche the arms of France and England, quarterly, above is a closed crown with fleur de lys and crosses paly alternately. The cartouche is supported on the dexter by a collared and chained yale, on the sinister by a hart with a coronet of fleurs de lis round his neck to which a chain is fastened. The field is diapered with a lozenge pattern enclosing roses and fleurs de lis alternately.

SIGILLVM·SCACARII·DOMINE·REGINE·ANNO·D'·MDLIX·

The motive of this seal is very similar to that of Henry VIII for the court

of Common Pleas (*Durham Seals* No. 3056). The obverse is stiff and inartistic in design, but the reverse is more interesting and is an excellent illustration of Tudor armoury at its best. The dexter supporter is that curious heraldic beast called a Yale, a full account of this mythical animal is to be found in the *Archaeological Journal*, vol. LXVIII, pp. 173-199. This seal is illustrated *ibid.* pl. vi face, page 186. The sinister supporter was often used in the royal armorials of the House of York, it was so used by both Edward IV and Edward V. It first appears, in A.D. 1461, on the seal of Cecily Neville wife of Richard duke of York and mother of Edward IV (see *Heraldry for Craftsmen*: by Sir W. H. St. John Hope, Fig. 127, p. 212). The document is No. 24 Calendar of Brumell Charters, *Arch. Ael.* XXIV, p. 119.

9. ELIZABETH (seal *pro brevibus coram nobis*) B. G. Brum.  
25; 12 Feb., 1566.

Round, 102 mm., dark brown wax.

*Obverse*: the queen robed and crowned seated upon a canopied and curtained throne. In the field on the dexter is a crowned Tudor rose, on the sinister a crowned fleur de lys.

ELIZABETH·D·G·ANGLIE·FRANCIE·ET·HIBERNIE·REGINA·  
FIDEI·DEFENSOR·

*Reverse*: armorial, France and England quarterly the shield is ensigned by the closed royal crown surmounted by a cross paty. The dexter supporter is a crowned lion, the sinister a dragon.

Beneath the shield on a scroll S·PRO·BREVI·BUS·CORAM·NOBIS·

ELIZABETH·D·G·ANGLIE·FRANCIE·ET·HIBERNIE·REGINA·  
FIDEI·DEFENSOR·

This, the seal of the court of Queen's Bench, is like in general motive to the previous one and to *Durham Seals* No. 3056. The badges of England and France appear in the field of the obverse and brighten an otherwise heavy and uninteresting design. The reverse offers another excellent example of Tudor heraldic art, the beautiful cartouch of the former seal is replaced by a less artistic but more distinctively Tudor type of shield. The supporters are those first used by Henry VII, the dexter the royal crowned lion, the sinister the Red Dragon of Wales. The document is calendared *op. cit.* p. 119.

10. JAMES I (second seal) B. G. Brum. 36; 12 Feb., 1621.

Round, 150 mm., dark brown wax. This is the same in every particular as his first seal (*Durham Seals* No. 3061), except that the canopy of the throne, on the obverse, projects more and scroll work has taken the place of the cherub above it as on the first seal.

Used A.D. 1605-1625. See Wyon p. 80 and plate xxv. Document calendared *Arch. Ael.* XXIV, p. 121.

11. CHARLES II (seal of King's Bench?) B.G.

Round, very imperfect, 115 mm., dark brown wax.

*Obverse*: the king robed and crowned seated on a canopied throne, a sceptre in his right hand, an orb with cross in his left hand, resting on his knee. Above the canopy of the throne is a shield

of arms, quarterly I and IV grand quarters, 1 and 4 France, 2 and 3 England, II Scotland, III Ireland, above is a round object possibly a pomegranate. On each side of the shield is an infant its left hand supporting the shield, its right a garland of flowers falling downwards, below this garland in the dexter field is a crowned Tudor rose, the sinister side of seal is destroyed.

..... ET·HIBERN·REX·FIDEI·DEPENSOR·

*Reverse*: armorial quarterly as on the observe. The shield is ensigned with a closed royal crown on the sinister side of which is R, the sinister supporter is a greyhound. The dexter side of seal is destroyed.

CAROLVS .....

This is a very poor impression and in an imperfect state. It appears to be like in general design to No. 9.

12. JAMES II

B.G.; A.D. 1688.

Round, 146 mm., brown wax.

*Obverse*: The king robed, crowned and wearing the collar of the Garter seated on a throne, his right hand holding a sceptre, his left an orb with cross. The canopy of the throne is curved in shell form and in front ensigned with the royal crown is a cartouche surrounded by the Garter and bearing the royal arms as on No. 11. It is supported on each side by a cherub. On each side of the canopy is a standing draped female figure holding with outstretched arm the voluminous drapery of the canopy. In the field on the dexter is a crowned sitting lion holding upright in his right paw a lance from which hangs a pennant bearing the cross of St. George, on the sinister is a sitting unicorn, round its neck a coronet of fleurs de lis and crosses paty and holding in its left hoof a spear from which hangs a pennant with the cross of St. Andrew. The legend begins in the lower dexter corner of the border. Beyond the legend is a laurel wreath, fastened in four places with a narrow riband crossed in saltire.

IACOBVS·SECVNDVS·D·GRA·MAG·BRI·FRA·ET·HIB·REX·  
FID·DEFENSOR·&

*Reverse*: The king, in Roman armour with cloak flowing from his shoulders and laureated head, mounted on a curveting horse, facing to the sinister. Beneath the horse, in the background, is a view of Southwark and London with the Thames between and connected by London Bridge. The legend begins at the top of seal.

IACOBVS·SECVNDVS·DEI·GRATIA·MAGNÆ·BRITANNIÆ·  
FRANCÆ·ET·HIBERNIÆ·REX·FIDEI·DEFENSOR·&

Used A.D. 1685-1688. The obverse is the same, with the needful alteration of name and some slight alterations of detail, as the fourth seal of Charles

ii (Wyon p. 106). The reverse is also the same except that James appears as a 'noble Roman' in armour, with laureated brows and wielding the short Roman sword. This is the seal that James dropped into the Thames at Lambeth, whilst crossing the river, on the night of his flight from London; it was afterwards dredged up in a fisherman's net. Illustrated Wyon plate xxxix.

## II.—PAPAL BULLS.

13. INNOCENT III C.H.H.B.  
Lothair count of Anagni and Segni, near Palestrina, cardinal deacon of SS. Serge and Bacchus, elected pope 8th or 9th January, 1198, ordained priest 21st February, consecrated and enthroned on the day following, died 16th July, 1216 (Mas Latrie 'Trésor de Chronologie,' p. 1112).
14. URBAN IV C.H.H.B.  
Jacques Pantaleon called 'de Court-Palais.' Born at Troyes, archdeacon of Liège, bishop of Verdun, patriarch of Jerusalem. Elected pope at Viterbo, 29th August, 1261, consecrated 4th September following, died at Perouse 2nd October, 1264. (*Op. cit.* p. 1119.)
15. URBAN VI B.G.  
Barthelemy Prignano, archbishop of Bari, elected pope 9th April, 1378, by the sixteen cardinals who were at Rome on the death of Gregory XI, died at Rome 18th October, 1389 (*Op. cit.* p. 1134). His election was the beginning of the schism which divided Christendom for nearly forty years.

## III.—EPISCOPAL.

## ARCHBISHOPS OF CANTERBURY.

16. BONIFACE Cast B.G.  
Oval, 80×50 mm., the archbishop standing on a bracket, blessing, his crosier in his left hand. He is vested in alb, tunic, chasuble, amice, rationale, pall, maniple and mitre. Beneath the bracket is a representation of his cathedral church with three towers and spires. In the field are four antique gems, two at each side.  
✠ BONIFACIVS DEI GRACIA CANTVARIENSIS  
ARCHIEPISCOPVS  
Boniface of Savoy, A.D. 1245-70.
17. JOHN Cast B.G.  
Oval, 78×52 mm., the archbishop standing on a carved bracket, blessing, holding his cross. Vested in alb, dalmatic, stole, chasuble, pall, amice, maniple and jewelled mitre. In the field on each side is a conventional lily.  
✠ S' IOHES-DEI : GRA-ARCHIEPS . . . . RIEN : TOCIVS.  
ANGLIE-PRIMA . . . .  
John Peckham, A.D. 1279-92.
18. JOHN Cast B.G.  
Oval, 78×51 mm., the archbishop standing on a richly carved

bracket beneath a triple canopy, blessing, holding a crucifix in his left hand. Vested in alb, dalmatic, stole, chasuble, pall, amice, maniple and jewelled mitre. In the field on the dexter, within an ornate panel, is the mitred head of a bishop, on the sinister a sword and key saltireways.

✠ S' IOHANNIS·DEI·GRA·CANTVARIENSIS ARCHIEPI  
TOCIVS ANGLIE·PRIMATIS·

John Stratford, A.D. 1333-48.

19. JOHN (seal *ad causas*) Cast B.G.  
Oval, 78×50 mm., in a centre niche, beneath a triple canopy of rich tabernacle work, is the emblem of the Holy Trinity, in a niche on the dexter is a bishop blessing, on the sinister an archbishop blessing; above in a central canopied niche is Our Lady, robed and crowned, seated with the child Christ, on each side in a like niche is a praying angel. Beneath under a round arch is the archbishop praying; on his dexter is a shield of the arms of the see of Canterbury, on his sinister a like shield, on a chevron within a border engrailed a mitre (Stafford).

s : ad : causas : jobis : pmissiōne : divina : cantvariē : archiepi

John Stafford, A.D. 1443-52.

20. CANTERBURY, COMMISSARY OF ARCHBISHOP OF Cast B. 4A.  
Oval, 58×35 mm., a king, robed and crowned, seated in a canopied niche, his right hand is blessing, his left holds an orb from which issues a sceptre with cross. Beneath in a square compartment is a pall.

+ sigillū : comissar : dnt : archiepi : cant' : in : visitacione :  
metropolitica :

21. CARLISLE, JOHN BISHOP OF Cast B.G.  
Oval, 88×54 mm., Our Lady robed, crowned and nimbed standing in a central niche of renaissance style and ornament, holding the child Christ on her right arm. Beneath is the bishop, holding an archiepiscopal cross, praying, on his dexter is the shield of arms, a plain cross, on his sinister a like shield, an archiepiscopal pall ensigned with a cross, impaling on a chevron between three kites' heads rased, three roses.

S·JOHIS·ARCHIEPI·TEBANES·f·EPI·KARLIOLI'S

John Kite, archbishop of Thebes, bishop of Carlisle, A.D. 1521-37.

#### BISHOPS OF DURHAM.

22. RICHARD BARNES (*ad causas*) Cast, Rev. G. V. Collier.  
Oval, 64×44 mm., God the Father seated on His throne holding a

scourge(?) in His right hand, an open book in His left. Beneath is a shield of arms on a bend embattled between two stars, a bear powdered with stars devouring a naked child, on a chief three radiated roses.

SIGILLVM·RICHARDI·BARNES·EPIS . . . DUNELMEN·AD  
CAUSAS·ECCL'ICAS.

A.D. 1577-87.

23. DURHAM, CHANCERY SEAL OF BISHOP BARNES Cast, Rev.  
G. V. Collier.

Rounded, oval, 64×57 mm., in the centre a large radiated rose upon which is a shield of arms of the Bishopric impaling Barnes as No. 3761, above the rose is the date 1577, and above that two arms and hands issuing from clouds, the dexter holds an open book on which is PATERNO and a scroll on which is DOCTRINA; the sinister holds a scourge and on a scroll DISCIPLINA. On the dexter side of central rose is R, on the sinister B, beneath it on a scroll CRVX·VERITATI·COMES

+ SIGILLVM·OFFICII·CANCELL·ECCLII·REVERENDI·  
PATRIS·RICI·DUNELM·EPI.

24. WILLIAM JAMES (great seal in chancery) Newcastle Public  
Library, Greenwell deeds.

Round, 86 mm.

*Obverse*: The bishop robed, seated on his throne under a round arch through which is seen the interior of a church with pillars, arches and traceried windows, on each side is a semi-arch and a masoned wall, upon this, on the dexter, is a shield of arms of the see of Durham, on the sinister is a shield quarterly I and IV a dolphin, II and III ermine on a chief three crosses crosslet. On a scroll beneath the throne is the motto VITA CHRVS MORS LVCRV. Beneath is a shield with the arms of the see impaling James as above.

. . . . ILLVM . . . LELMI·JAMES·EPI . . . . . ENSIS·1606

*Reverse*: Equestrian, the bishop in plate armour with a large plume of feathers on his helm, brandishing a sword in his right hand. The horse, caparisoned and plumed, gallops over a field in which flowers grow. Beneath on a scroll is . . . TATE VITIT  
SIGILLVM·GVLIELMI·JAMES·EPISCOPI·DVNELMENSIS 1606

A.D. 1606-17.

25. THOMAS MORTON (great seal in chancery) Newcastle Public  
Library, Greenwell deeds.

Round, very imperfect.

*Obverse*: A shield of arms the see of Durham, impaling I and IV a goat's head rased, II and III ermine, above the shield is a mitre, with its ribbons, placed with the horns at each side.

Legend destroyed.

*Reverse*: Equestrian, the bishop in richly ornamented armour and a plumed helm, brandishing a sword. The horse is caparisoned and plumed.

Legend destroyed.

A.D. 1632-59.

26. EXETER, JOHN BISHOP OF Cast B.G.  
 Oval, 64×38 mm., the bishop, seated on his throne beneath a canopy, vested in alb, dalmatic, chasuble, amice, maniple and jewelled mitre, his right hand blesses, his left holds his crosier. On the dexter in the field is a key, on the sinister a sword. Beneath is a shield of arms paly, on a bend three eagles above it  
 GRANDISONO  
 S' IOHIS DEI GRA EPI EXONIENSIS  
 John Grandison, A.D. 1327-69.

#### BISHOPS OF HEREFORD.

27. RICHARD Cast B.G.  
 Oval, 74×45 mm., the bishop standing on a bracket, blessing, vested in alb, dalmatic, stole, chasuble, amice, maniple and mitre.  
 RICARDVS : DEI : GRA : EPS : HEREFORDENSIS.  
 A.D. 1121-27.
28. THOMAS (*ad causas*) Cast B.G.  
 Oval, 64×44 mm. Beneath a triple canopy on the dexter two women nimbed and reading from a book, on the sinister a bishop in pontificals blessing. Beneath a shield of arms three fleur de lys issuing out of leopards' faces.  
 S' THOME DEI ET A'PLCE SEDIS GRA EPĪ HERFORDII AD  
 CAVSAS  
 Thomas Cantilupe, A.D. 1275-82.
29. RICHARD Cast B.G.  
 Oval, 54×32 mm. A double canopy with side shafts, crockets, and finials, in the dexter Our Lady seated nursing the child Christ, in the sinister a robed, headless figure holding in front of his breast his crowned head (St. Ethelbert). Beneath under a pointed arch is the bishop in pontificals praying.  
 REGIS : ETHELB'TI PRECE VIRGO MEMETO RICARDI.  
 Richard Swinfield, A.D. 1283-1317.
30. HEREFORD, CHAPTER OF Cast B.G.  
 Oval, 48×32 mm., a king crowned and robed seated on a throne his right hand holding . . . . . his left a sceptre. In the field on the dexter is a crescent, on the sinister a star.  
 † SIGILL : CAPITVLI : HEREFORDI.

## BISHOPS OF LINCOLN.

31. RICHARD Cast B.G.  
 Oval, 72×44 mm., the bishop standing, on a carved bracket, beneath a canopy representing his cathedral, vested in alb, dalmatic, chasuble, rationale, amice, maniple and mitre. His right hand blesses, his left holds his crosier. Field diapered.  
 RICARDVS : DEI : GRACIA LINCOLNIENSIS-EPISCOPVS.  
 Richard Gravesend, A.D. 1258-79.
32. RICHARD Cast B.G.  
 Oval, 37×30 mm. Our Lady, with the child Christ, seated on a throne beneath a canopy. Below Richard kneeling prays.  
 TE-RICARDE-REGO-PORTA-SALVTIS-EGO  
 Same man as No. 31.
33. JOHN Cast B.G.  
 Oval, 68×44 mm. A double canopied niche, in the dexter Our Lady robed and crowned standing holding the child Christ, in the sinister a bishop *in pontificalia* standing blessing. Beneath, under an arch, is the bishop kneeling and praying.  
 SIGILLV IOHANES DEI GRA LINCOLNI EPISCOPI AD  
 CAVSAS  
 John Chadworth, A.D. 1452-71.

## BISHOPS OF LONDON.

34. FULK Cast B.G.  
 Oval, 65×40 mm. The bishop, blessing, standing on a bracket carved in wavy lines (representing the barry wavy shield of Basset) vested in alb, tunic, chasuble, rationale, amice and mitre.  
 † SIGILL' FVLCONIS : DEI GRACIA LONDONIEN-EPISCOP.  
 Fulk Basset, A.D. 1244-59.
35. JOHN Cast B.G.  
 Oval, 63×44 mm., the bishop standing blessing, his crosier in his left hand; vested in alb, dalmatic, chasuble, amice, maniple and mitre. In the field on the dexter is a sword, on the sinister two keys.  
 † IOHANNES : DEI : GRA LONDONIENSIS : EPISCOPVS  
 John Chishull, A.D. 1274-80.
36. NORWICH, WILLIAM BISHOP OF Cast B.G.  
 Oval, 78×63 mm. The Trinity within a niche of renaissance style and decoration. Beneath is a shield of arms three mitres.  
 .. SIGILLVM-WILHELMI-NORWICENCIS.  
 William Repps or Rugg, A.D. 1536-50.



## ARCHBISHOPS OF ST. ANDREWS.

37. JAMES STEWART C.H.H.B.  
 Oval, 108×61 mm. In a central canopied niche St. Andrew standing, holding his cross by his side by his right hand, his left holding a book. Above him in a canopied niche is the emblem of the Holy Trinity, on his dexter, also in a niche is St. Michael the Archangel holding in his right hand a pair of scales and in his left a cross-topped spear; on his sinister side in a like niche is a bishop in *pontificalia*, his right hand blessing, his left holding his crosier. Beneath, under a round arch, in the centre, is the Archbishop, with cross and mitre, kneeling praying; on his dexter side is a standing robed figure holding a palm branch, on his sinister is St. Giles with his hind. Beneath the archbishop is the royal shield of Scotland ensigned with an archiepiscopal cross and a crown. The legend begins in the lower dexter corner.  
 S' IA-ARCHIEPI-SCI-ANDR-TOCIVS-SCOTIE-PMAT-SE-AP-  
 LEGATI-DVCIS-ROSSIE-SCE-CRUC-COMEDATA'  
 James Stewart, Duke of Ross, archbishop of St. Andrews, A.D. 1497-1503.
38. ANDREW FORMAN C.H.H.B.  
 Round, 64 mm., red wax, three canopied niches, in the central one St. Andrew holding his cross in front of him, in the dexter Our Lady standing robed and crowned holding the child Christ, in the sinister St. Mary Magdalene nimbed and holding a pot of ointment in her right hand. Beneath is a shield of arms quarterly I and IV a chevron between three fishes paleways, II and III a horse's head rased, with a bell at the neck.  
 s · andree · [forma · archiepi · sct · andr]ee · totivs · regni ·  
 scotie · p'mat' · ac · [aplice]sedis legati nati  
 A.D. 1514-22.
39. WINCHESTER, JOHN BISHOP OF Cast B.G.  
 Oval, 66×44 mm., the bishop standing blessing, his crosier in his left hand, vested in alb, dalmatic, chasuble, amice, maniple and mitre. In the field on each side is a fleur de lys.  
 † S' IOHANNIS : DEI : GRA : WINTONIEÑ : EPISCOPI.  
 John of Pontoise, A.D. 1282-1304.
40. YORK, CHAPTER OF (*ad causas*) Cast B.G.  
 Oval, 73×45 mm. St. Peter robed and tonsured standing holding two keys in his right hand the wards resting over his shoulder, and a closed book in his left.  
 † SIGILL' CAPITVLI-ECCLESIE-BEATI PETRI EBORAC'AD  
 CAVSAS-ET NEGOCIA.

## IV.—MONASTIC.

41. ABINGDON, JOHN ABBOT OF Cast B.G.  
 Oval, 88×55 mm., beneath a triple canopy of tabernacle work, in the centre niche Our Lady standing robed and crowned holding the child Christ on her left arm and a sceptre in her right hand, on her dexter is St. Peter, on her sinister St. Paul, beneath are three shields of arms, that in the centre bearing a tree, that on the dexter a lion rampant, that on the sinister a cross paty between four martlets.  
**sigillv : dñi jobis abbatis : abandonic · s · d · n · : pape : commissarii.**  
 Benedictine Abbey, Berkshire. This is the seal of John Sante, D.D. and Papal Commissary. A.D. 1469-95.
42. BARLINGS, ABBEY OF Cast B.G.  
 Oval, 60×36 mm., beneath a central canopy is Our Lady robed and crowned seated, a sceptre in her right hand, the child Christ standing on her left knee, in a niche on the dexter is St. John the Baptist, on the sinister St. John the Evangelist, above in the centre is Our Lord in Glory, blessing; beneath in the centre is the abbot praying; on his dexter a shield of arms three cinquefoils (Bardolf), on his sinister a like shield charged with a star of sixteen points (Hay).  
**· s · abbatis : ecclie beate marie : de : barlingis**  
 Premonstratensian abbey of St. Mary, Lincolnshire.
43. BARLINGS, ABBOT OF Cast B.G.  
 Oval, 51×32 mm., the abbot standing on a bracket beneath a canopy with side shafts, crockets and finials, his crosier in his right hand, a book in his left.  
**SIGILLVM : ABBATIS : DE : BARLINGES.**
44. BOXGRAVE, PRIORY OF Cast B.G.  
*Obverse* : Oval, 64×42 mm., the western front of the abbey church, the Annunciation represented in the doorway, a praying monk in each of the side doorways, above in a trefoil is a demi figure of Our Lord blessing, beneath in a quatrefoil within a lozenge is the mitred head of St. Blaise, a star in a circle on each side.  
**SIGILL' : ECCI'E : SCE : MARIE : SCIQ : BLASII : DE : BOXGRAVA :**  
*Reverse* : Oval, 64×42 mm., Our Lady, robed, crowned and nimbed seated on a throne, a lily in her right hand and the child Christ seated on her left knee, a box tree is on each side of the throne with a bird on the top.  
**‡ DICIT̄ EX LIGNO : VIRIDI : BOXGVIA : DIGNO : NOIE NĀ : CRESCIT : VTVTIB·ATQ·VIRESCIT.**

45. BRIDGENORTH (?) DOMINICAN FRIARY OF Cast B.G.  
 Oval, 65×38 mm., St. Paul, a sword in his right hand, a book in his left, standing beneath a canopy.  
 S'-CONVENT-FRM-ORDIS PREDICATOR-BRVGEN.
46. CANTERBURY, HENRY PRIOR OF Cast B.G.  
 Oval, 80×48 mm., the abbot in pontificals holding a book to his breast with both hands, standing on a carved bracket beneath a canopy with side shafts, crockets and finials, on each side is the full faced head of a monk within a quatrefoil. The field is beautifully diapered.  
 S' HENRICI PRIORIS EC[CLE]SIE X'PI CANTVARIE  
 Henry Eastry, prior of Christ Church from *circa* A.D. 1284-1331.
47. CANTERBURY, ROGER ABBOT OF ST. AUGUSTINE'S OF Cast B.G.  
 Oval, 74×46 mm., the abbot in pontificals standing in the centre of a conventional representation of his priory church, on each side, in a sunk panel, is the full faced head of a monk.  
 SIGILL ROGERI DEI GRA AB . . . . . SCI AVGVSTINE :  
 CANTVARIE.  
 Benedictine abbey of St. Augustine, Roger of Chichester was abbot A.D. 1252-72.
48. CANTERBURY, CHRIST CHURCH Cast B.G.  
*Obverse*: Round, 90 mm., a representation of the church within its precinct wall, above the central doorway is Our Lord, blessing, beneath Him EST·DOMVS·H'·XPI, between the towers are two angels descending from clouds and censing, in sunk panels on each of the side towers above is a head, below is on the dexter the head of St. Dunstan, on the sinister St. Elphegus, on the wall beneath the central door is MURI·METROPOL'·ISTI.  
 SIGILLVM : ECCLESIE : XPISTI : CANTVARIE : PRIME :  
 SEDIS : BRITANNIE :  
*Reverse*: Round, 90 mm., a conventional representation of the cathedral, showing through the central double doorway, the martyrdom of St. Thomas; through a single doorway on the dexter the knights are shown entering the church, through a like door on the sinister they are shown leaving it. An angel leaning out through a round window is seen above each of the side doors; above the central door is Our Lord in *vesica* and above that in a triple arched arcade is the soul of St. Thomas held up by angels, a monk is on each side praying, above the roof on each side is an angel descending from clouds and censing.  
 † EST HVIC : VITA : MORI : PRO : QVA : DVM[VIXIT  
 A]MORI·MORS : ERAT : ET : MEMORI : PER : MORTEM  
 VIVIT : HONORI

49. CHAUCOMBE, PRIORY OF Cast B.G.  
 Oval, 68×42 mm., the standing figures of St. Peter and St. Paul,  
 above is the hand of God blessing, beneath is the prior praying.  
 ✦ SIGILL' APOSTOLORV̄ PETRI ET PAVLI DE CHAUCUMBA.  
 A priory of Austin canons, Northamptonshire.
50. CHESTER, PRIORY OF CARMELITES OF Cast B.G.  
 Oval, 48×26 mm., Our Lady standing with the child Christ, on  
 each side a candle in a candlestick.  
 S P'ORI-CESTRIE-FR'M DE CARMELO
51. COMBERMERE, THOMAS ABBOT OF Cast B.G.  
 Oval, 60×30 mm., Our Lady robed and crowned standing in a  
 decorated niche, holding the child Christ on her left arm, beneath  
 is the abbot praying.  
**sigilly thome fynyon abbatis de combermere**  
 Cisterian abbey, Cheshire.
52. DUNWICH, GUARDIAN OF FRIARS MINOR OF Cast B.G.  
 Oval, 55×33 mm., in a traceried niche, St. John Baptist standing  
 holding the Holy Lamb, a friar kneels to him holding a scroll  
 upon which is inscribed s. job' ora p' me  
**sigilly' gardiani : fratrv̄ minor' donewych**
53. DENNY, ABBEY OF ST. MARY OF Cast B.G.  
 Oval, 43×28 mm., Our Lady, robed and crowned, standing beneath  
 a canopy, holding the child Christ.  
**s' abbatisse sce maria deainie**  
 Abbey of minoresses, Cambridgeshire.
54. DORE, JORDAN ABBOT OF Cast B.G.  
 Oval, 55×35 mm., Our Lady, robed and crowned, holding the child  
 Christ, standing in a decorated niche, beneath is the abbot praying.  
**s : fratris : jordanii : abbis : de : monstii : de : dora**  
 Cistercian abbey of St. Mary, Herefordshire.
55. ELY, CHAPTER OF Cast B.G.  
 Round, 80 mm.  
*Obverse* : A façade of three pointed arches, trefoil cusped on the  
 inside, and supported on clustered columns with bases and carved  
 capitals, above is a representation of the cathedral priory with  
 an angel censuring on each side. Beneath the central arch is St.  
 Etheldreda robed and crowned, holding in her right hand a  
 crosier, a book in her left; on her dexter is the robed and crowned  
 figure of King Ecgfrid, on her sinister the robed figure of a youth,  
 Tonberht, a falcon on his right wrist.  
**SIGILLVM : CAPITVLI : ECCL'IE : SCĒ : ETHELDREDE :**  
**DE : ELY.**

*Reverse*: Round, 80 mm., the architectural decoration is the same as on the obverse. In the centre is St. Peter standing, nimbed and robed, and holding keys and book, on his dexter is bishop Ethelwold, on his sinister St. Etheldreda. Beneath is a boat, on water, in which are five figures.

S'ŪCI : PETRI-ET SĒE : ETHELDRIDE : VIRGINIS : ET  
REGINE.

On the edge of the completed seal is the following rhyme:—

PETRVS : ET.ELDREDA : MOLLIS : SVB : TEGMINE : CERE : ELY : SECRETA :  
CELARE : SIMVL : STATVERE :

56. EXETER, THOMAS PRIOR OF ST. JAMES OF Cast B.G.  
Oval, 42×26 mm., St. James as a pilgrim standing in a traceried and canopied niche.

*s. fris · thome · dene · prior' exonie*

A Cluniac priory dedicated to St. James. James Dene was prior *circa* A.D. 1426.

57. EXETER, CATHEDRAL OF Cast B.G.  
Oval, 88×51 mm., St. Peter, in pontificals and wearing the tiara, seated on a throne beneath a canopy, holding in his right hand a church, in his left a key.

SIGULLVM : ECCLESIE : BEATI : PETRI : EXONIE

Dating about the middle of the fourteenth century.

58. EXETER, VICARS CHORAL OF Cast B.G.  
Oval, 56×36 mm., in a canopied niche Our Lord walking on the water and raising the half submerged figure of St. Peter, above the latter is a scroll upon which is QVARE·DVBITASTI· beneath are six heads of the vicars choral, gazing upwards, one being a demi figure with hands raised in prayer.

*s' : coe : custodis : et : collegii vicarior' : de chro. eccl'ie :  
cathedralis : exonie*

59. GLOUCESTER, DOMINICAN FRIARS OF Cast B.G.  
Oval, 50×32 mm., a double canopied niche with crockets, finials and side shafts, in the sinister stands St. Dominic holding in his right hand a long cross, in his left a book; in the dexter is a saint (?) holding, in his left hand, by its point, a sword upright. Beneath is a friar kneeling praying.

S'COMMVNE·FRM·PREDICATOR·GLOVCESTRIE

60. HALTEMPRICE, PRIORY OF Cast B.G.  
Oval, 57×36 mm. In a central niche St. Michael spearing the dragon, beneath is a kneeling figure praying.

*s prior' covetus ball ordis sci augustini balt.*

A priory of Austen Canons, Yorkshire.

61. HATFIELD REGIS Cast B.G.  
 Oval, 58×48 mm., Our Lady robed and crowned seated with the child Christ on her knee.  
 \* S'PRIORIS·ET·CONVENTVS·DE·HATFIELD·REG·AD·  
 CAVSAS  
 A Benedictine priory in Essex.
62. HAYLES, ABBEY OF Cast B.G.  
 Oval, 56×34 mm., a tonsured and robed figure standing holding in his right hand a bottle with a cross coming out of its neck, in his left a spurge or sprinkler. The field is diapered with a floral pattern.  
 \* sigillū · fratīnitāt' mōna sterii · beate · marie · de · hayles.  
 Cistercian abbey of St. Mary, Gloucestershire. The bottle alludes to the blood of Our Lord some of which was reputed to be preserved in the abbey.
63. JERUSALEM, ORDER OF ST. JOHN OF Cast B.G.  
 Oval, 59×36 mm., in a central canopied niche, a bishop, in pontificals, blessing.  
 × sigillū × fratīnitātis × sci joan jerusale · in · anglia
64. JERUSALEM, ORDER OF ST. JOHN OF (?) Cast B.G.  
 Oval, 55×35 mm., in a canopied niche a bishop in pontificals blessing.  
 · sigillū · fratīnitātis · sci joan · jerlm̄ · in · anglie
65. KIRKSTEAD, ABBOT OF Cast B.G.  
 Oval, 54×35 mm., the abbot standing, his crosier in his right hand, a book in his left.  
 \* SIGILLVM ABBATIS DE KIRKESTEDE  
 Cistercian abbey of St. Mary, Lincolnshire. The seal is that of Simon, abbot *circa* A.D. 1280.
66. LEWES, PRIORY OF Cast B.G.  
 Round, 78 mm., in a central canopied niche the seated figure of a king robed and crowned holding a long sword in his left hand; in a niche on each side is a figure in civilian dress and in an outer niche on each side a soldier; beneath is St. Pancras being beheaded by an executioner, behind him on a scroll S'PANCRATI'. On the dexter is a shield of arms checky (Warene), on the sinister another shield quarterly I and IV Fitz Alan, II and III Warene; on the plinth is MARTIRIALE·DECVS·TRIBVIT·MICH·CESARIS·IRA'  
 sigillum comūne prioris et conventus monasterii sancti  
 pancratii · de · lewes.  
 A Cluniac priory at Lewes in Sussex.

67. LODON, DOMINICAN FRIARS OF (?) Cast B.G.  
 Oval, 64×40 mm., St. Bartholomew holding a flaying knife and a book, standing in a niche.  
 SIGILLV : COVET9 SĀTI : BARTHOLOMEI·ORDINIS·  
 FRATRV·PREDECATORV LODO :
68. LUFFIELD, PRIORY OF Cast B.G.  
 Oval, 65×43 mm., in a niche with trefoiled canopy (above which is a church) and side shafts, Our Lady robed and crowned, the child Christ on her knee. Beneath the prior prays.  
 S' : COMMVNIS : SANCTE : MARIE·D' LVFFEILT  
 Benedictine priory of St. Mary, Northamptonshire.
69. MALDON, ABBEY OF Cast B.G.  
 Oval, 50×32 mm., a bishop, St. Nicholas, in vestments and mitre holding his crosier in his left hand, his right hand blessing, seated on a throne with pinnacles. Beneath is the abbot praying.  
 S'ABBATIS·ET·CONVENTVS·DE·MALDONA·  
 A Premonstratensian abbey dedicated to St. Nicholas, in Essex. This seal is apparently of early fourteenth century date.
70. MERTON, PRIORY OF Cast C.H.H.B.  
 Oval, 83×51 mm.  
*Obverse* : Our Lady seated with the child Christ.  
 † SIGILL : ECCLESIE : SANCTE : MARIE : DE : MERITONA.  
*Reverse* : A standing figure of St. Augustine of Hippo.  
 † MVNDI : LVCERNA NOS AVGVSTINE : GVBERNA·  
 Round the edge of the seal is the legend AVGVSTINE·PATER·QVOS·INSTRVIS·IN·  
 MERITONA·HIS·CHRISTI·MATER·TVTRIX·EST ATQVE·PATRONA·  
 A Priory of Austin canons, Surrey.
71. Nil.
72. NORTHAMPTON, AUSTIN CANONS OF ST JAMES' Cast B.G.  
 Oval, 69×44 mm., St. James in pilgrim's garb standing in a canopied niche with side shafts. On each side is a man's head and the field is strewn with scallop shells. Beneath is the abbot holding his crosier.  
 S'CONVENTVS : SĀI·JACOBI EXTRA NORHĀTONA
73. NORWICH, AUSTIN FRIARS OF Cast B.G.  
 Oval, 40×25 mm., St. Michael spearing the dragon.  
 † S'PRIORIS FRATV̄ ORDINIS SCI AVGVSTINI NORWICI·
74. NUTLEY, ABBEY OF Cast B.4E.  
 Oval, 60×41 mm., Our Lady robed and crowned seated, the child Christ on her left knee, a lily in her right hand.  
 † SIGILLVM : SANCTE : MARIE : DE : NVTLE·  
 An abbey of Austin canons, Buckinghamshire.

75. ROMSEY, ABBEY OF Cast B.G.  
 Oval, 50×32 mm., Our Lady with Christ standing in a niche of tabernacle work. Beneath is the abbot holding up a gridiron (?)  
 S'COMVNE : ABBATIS-ET-CO . . TVS.DE.ROMESAY  
 A Benedictine Abbey in Hampshire.
76. SAINT EDWARD, ABBEY OF Cast B.G.  
 Oval, 40×25 mm., the abbot standing, tonsured, vested in alb, chasuble and amice, holding a crosier in his right hand, a book in his left.  
 S'ABB'IS-LOCI-SC'I-EDWARDI-  
 A Cistercian abbey in Netley, Hampshire.
77. SANDWELL Cast B.G.  
 Oval, 78×44 mm., Our Lord with cruciferous nimbus, seated, his right hand blessing, his left holding a book.  
 † SIGILV-COMVNE-SANE-MARIE-MAGDELENA-DE-  
 SANDWELLE  
 A Benedictine Priory, Staffordshire.
78. SELBORNE, PETER PRIOR OF Cast B.G.  
 Oval, 40×25 mm., demi figure of Our Lady with Christ between two pinnacles and beneath a canopy. Below the prior kneeling prays.  
 S'PETRI-PRIORIS-DE-SELEBVRNE.  
 A priory of Austin canons, Hampshire.
79. SHREWSBURY, ABBEY FORGATE AT Cast B.G.  
 Oval, 54×33 mm., on the dexter a vested arm and hand holding a crosier on the sinister a mail clad arm and hand grasping a sword, a staff between them. Beneath the crosier head is a rose and beneath the hand a smaller rose, beneath the pommel of the sword is also a rose and above the arm a cross of four roundels.  
 \* S'COMMVNE-DE-FFORYATE-MONACHOR  
 The Benedictine abbey of St. Peter and St. Paul, Shrewsbury.
80. SOUTHWICK, PRIORY OF Cast B.G.  
 Round, 70 mm.  
*Obverse* : Our Lady robed and crowned, seated with the child Christ, whom she nurses, on her left knee. The figures are in a central niche above and around which is a conventional representation of the priory church. On an inner layer of wax four tonsured heads look through the open windows of the church.  
 SIGILLVM : ECCLESIE : SANCTE : MARIE : DE : SVWIKA.  
*Reverse* : A representation of the west end of the priory church, on an inner layer of wax seen through an open eight foiled window is a cruciferous nimbed figure of Our Lord, His right hand



blessing, His left holding a . . . . . Through an open window at each side looks a tonsured head of a canon. Through the central doorway beneath is a representation of the Annunciation.

SIT·PRO : SVWIKĀ : MEDIATRIX : VIRGO : PVDICA : ET :

PAX : ANGELICA : SIT·NOBIS : SEMPER : AMICA :

A priory of Austin canons at Southwick, Hampshire.

81. SPALDING, SIMON PRIOR OF Cast B.G.

Oval, 48×31 mm., the abbot tonsured, vested in amice, alb, and chasuble, standing holding a book to his breast with both hands.

✠ SIGILLVM : SYMONIS : PRIORIS : SPALDINGIE

A Benedictine priory at Spalding, Lincolnshire. The seal is that of Simon Hantebarge, A.D. 1229-52.

82. SPON, CONVENT OF (?) Cast B.G.

Oval, 55×30 mm., a nimbed figure in armour and cloak, standing on a lion, holding a sword in right hand and a book in left.

s·convētus·de·spon·sc̄ti·adriani·ī·cb·...

83. WORMLEY, JOHN PRIOR OF Cast B.G.

Oval, 37×25 mm., in a canopied niche a tonsured figure, St. Leonard, standing holding a crosier in his right hand, a book in left. Beneath the prior kneeling prays.

s'jobannis prioris de wormeley

A priory of canons of the order of St. Victor, dedicated to St. Leonard, at Wormsley, Herefordshire. This is the seal of John ap Eignon, *circa* A.D. 1452.

84. YARMOUTH, DOMINICAN FRIARS OF Cast B.G.

Oval, 48×29 mm., three niches with pointed arches and with side shafts, above which is a church canopy. In the centre Our Lady robed and crowned, stands with the child Christ, in the dexter niche is a robed figure standing holding a cross (St. Dominic) in the sinister a bishop in episcopal vestments and crosier, blessing. Beneath are two fishes swimming in water.

S'CONVENT : FRVM PREDIC GERNEMVTE·

#### V.—MISCELLANEOUS ECCLESIASTICAL.

85. CHESTER, ARCHDEACON OF Cast B.G.

Oval, 46×31 mm., above in a crocketed niche is a demi figure of Our Lady with Christ, below in a double niche on the dexter a bishop in pontificals blessing, on the sinister St. John Baptist, on each side in the field, is a sheaf. Beneath, under an arch, is the archdeacon praying.

S'MAGRĪ ROBTI' DE REDSWELLE ARCHID'I CESTRI'

Robert of Radeswell, archdeacon *circa* 1290-1314.

86. NORTHAMPTON, ARCHDEACON OF Cast B.G.  
 Oval, 68×46 mm., the archdeacon, holding a book, standing in a  
 canopied niche of debased renaissance style.  
 SIGILLVM·THOMAE·WOLSEY·S·T·P· ARCHIDIACONI·  
 NORTHAMTON  
 Collated 4th Jan., 1679-80, died 29th Nov., 1707.
87. SHREWSBURY, ARCHDEACON OF Cast B.G.  
 Oval, 59×37 mm., in a niche of classical design a bishop in ponti-  
 ficals blessing.  
 SIGILLVM : WILLMS : HILL : ARCHIDIACONI·SALOP  
 Collated 15th Jan., 1557-58, died *circa* 1561.
88. HANBURY, PECULIAR JURISDICTION OF Cast B.G.  
 Oval, 58×35 mm., Our Lady with Christ seated on a throne.  
 Beneath is a shield of arms, a fess between six birds.  
 SIGILLV̄ PECVLIARIS IVRISDICTIONIS ECCLIE·DE :  
 HANBERI  
 Apparently of seventeenth century date. Hanbury in Worcestershire.
89. CHICK, CHURCH OF Cast B.G.  
 Oval, 64×41 mm., beneath a canopy, representing the church,  
 supported on round side shafts, the headless figure of St. Osyth  
 facing to the sinister holding her head in front of her, behind  
 her is a sword (St. Paul), in front a key (St. Peter).  
 S·ECĀE·SĀE : OSYTH·DE : CHIC : AD·CĀS :  
 A Priory of Austin canons at Chich or St. Osyth, Essex.
90. NEWTOWN, CHAPEL OF ST. MARY IN THE MARSH AT Cast B.G.  
 Oval, 63×48 mm., Our Lady crowned and robed holding the child  
 Christ, standing beneath a canopy supported on round side shafts.  
 sigillum : capelle : beate : marie : in : mari·  
 ? Newton in Cambridgeshire.
91. LITTLE MALVERN, JURISDICTION OF Cast B.G.  
 Oval 48×29 mm., St. Giles vested as abbot with crosier and mitre,  
 the hind by his side seated in a canopied niche.  
 SIGILLV JURISDICCIONIS PARVE MALVERNIE·  
 Benedictine priory at Little Malvern, Worcestershire.
92. SALISBURY, VICARS CHORAL OF Cast B.G.  
 Oval, 56×35 mm., the coronation of the Virgin.  
 † S' 9 MVNE VIC'RIO ECCL'E SARESBIENS'  
 Seal is apparently of thirteenth century date.

93. SHREWSBURY, FRATERNITY OF ST. WINIFRED AT Cast B.G.  
 Oval, 70×43 mm., in a central panel the martyrdom of St. Winifred, above is a cross between the letters t. m. ; beneath is a shield of arms, a sword and a key saltireways.  
**sigillū · cōe · fraternitat' · beate · wenefride · virginis · ī : eclīa :**  
**sce : cruc' : i : fra : monastv' : scī : petri : salopie :**  
 Seal of the Fraternity of St. Winifred in the church of St. Cross within the abbey of St. Peter and St. Paul, Shrewsbury.
94. WOLVERHAMPTON, CHAPTER OF Cast B.G.  
 Oval, 65×38 mm., in a double canopied niche on the dexter St. Peter, on the sinister St. Paul. Beneath is a kneeling figure praying surrounded by five men's tonsured heads.  
**sigillū cōe · capitali · de : wolvernhampton.**

## VI.—COLLEGES, SCHOOLS, HOSPITALS, &amp;c.

95. CAMBRIDGE, CORPUS CHRISTI COLLEGE Cast B.G.  
 Oval, 61×38 mm., above in a niche is the coronation of the Virgin, below on the dexter is a shield of arms with the armorial representation of the Trinity, on the sinister a like shield with the instruments of Our Lord's passion. Beneath are two kneeling figures, with three smaller ones beside them, holding up a church between them.  
**s' · cōe' · domus · corporis · xpi et bē' · marie · cantebriggie**
96. OXFORD, LINCOLN COLLEGE Cast B.G.  
 Oval, 45×26 mm., a bishop in pontificals, standing in a canopied niche, blessing. On the exergue s'bugo.  
**sigillū collegii lyncolnie in oronia ad causas**
97. OXFORD, ALL SOULS' COLLEGE Cast B.G.  
 Round, 66 mm., a triple niche with canopies of tabernacle work, the outer niches having double canopies. In the centre is Our Lord in Glory, blessing, in the dexter is a kneeling figure of King Henry VI robed and crowned and holding his sceptre, behind him is a figure wearing the tiara, and holding a cross patriarchal, on the king's right hand stands a bishop in pontificals and with crosier, in the sinister niche is the kneeling figure of an archbishop in pontificals, behind him stands a figure wearing a cardinal's hat and holding a cross, on the archbishop's left stands a bishop in pontificals. Beneath in the centre are souls tortured in fire, on the dexter is a shield of arms France and

England, quarterly (Henry VI), on the sinister a like shield, the see of Canterbury impaling Chicheley (a chevron between three cinquefoils).

× sigillū : commune : collegii animarū oīm defvictorūm  
de oxonia

98. OXFORD, QUEEN'S COLLEGE . . . . . Cast B.G.  
Round, 40 mm., in a central canopied niche the robed and crowned figure of Queen Philippa standing holding a sceptre in her left hand. On her dexter upon the tracery of a side niche is a shield of arms France (ancient) and England quarterly, on her sinister a like shield I and IV England, II and III quarterly Flanders and Holland. In base the arms three eagles displayed (Eglesfield).  
S' COMVNE-PREPOSITI ET SCOLARIV-AVLE-REGINE-DE-  
OXONIA
99. OXFORD, STAPELDON HALL . . . . . Cast B.G.  
Oval, 60×47 mm., above in a canopied niche Our Lady seated with the child Christ. Beneath is bishop Stapeldon in episcopal vestments kneeling to the sinister holding his crosier in front of him; behind him are two keys, in front a sword, beneath a shield of arms, two bends wavy.  
S-RECTORIS-ET-SCOLARIVM-DE-STAPELDON-HAL OXON-
100. OXFORD, MERTON COLLEGE . . . . . Cast B.G.  
Oval, 50×31 mm., Our Lady seated on a throne with the child Christ on her knee, beneath is a demi figure praying.  
S'SCOLARIVM D' MERTONA-AD CAS.
101. SALISBURY, COLLEGE OF ST. EDMUND . . . . . Cast B.G.  
Oval, 62×38 mm., in a central canopied niche an archbishop in pontificals seated, beneath under a round arch is a kneeling figure praying. On the dexter of the central niche is a shield of arms, three suns, on the sinister a like shield, a chevron between three castles.  
s : cōe : collegii : scī · edmundi nove sar'
102. STRATFORD, COLLEGE OF . . . . . Cast B.G.  
Oval, 53×33 mm. The emblem of the Holy Trinity within a canopied niche, beneath is a shield of arms, on a fess three crosses crosslet.  
sigillū · cōe · collegii · de · strattford ad cas.
103. WESTMINSTER, ST. STEPHENS OF . . . . . Cast B.G.  
Oval, 65×40 mm., above in a double canopied niche on the dexter Our Lady robed and crowned holding the child Christ, on the sinister St. John the Evangelist holding an eagle and a palm branch. Beneath, in a niche with two round arches, is on the

dexter St. Stephen holding a book and stones, on the sinister five persons kneeling to him. In base a shield of arms France (ancient) and England quarterly.

s' · comē · decani · et · collegii · capelle · sc̄i · steph̄i ·  
westmonasterii ·

104. WINCHESTER, COLLEGE OF Cast B.G.  
Oval, 75×46 mm., in an upper double canopied niche is the Annunciation, Gabriel holds a scroll on which is AVE MARIA; beneath in like niches is St. Peter, seated, on the dexter and St. Paul on the sinister, on each side, on the tracery is a shield of arms two chevrons between three roses (William of Wykeham), on the exergue *wike' m. eps fundator* beneath under a round headed arch is a demi bishop (William) with crosier and mitre, under a smaller arch, on each side is a man's head.  
sig : cōe : collegii : vocati : sc̄e : marie : collegie · of :  
wynchestre ppe wynton :
105. ASHBORNE SCHOOL (DERBYSHIRE) Cast B.G.  
Oval, 88×68 mm., above is Queen Elizabeth robed and crowned seated on a canopied throne, on each side are kneeling figures of the founders to whom she gives the charter. Beneath is a representation of the school with the masters in caps and gowns and the pupils seated on a form.  
SIGILLV · LIBERAE · SCHOLAE · GRAMATICALIS · ELIZABETHAE ·  
REGINAE · ANGLIAE · IN · VILLA · DE · ASHBURNE · IN ·  
COMITATV · DERBIAE
106. HALIFAX GRAMMAR SCHOOL Cast B.G.  
Oval, 53×35 mm., an open book—the Bible, upon which is, QUI · MIHI · DISCIPVLVS · PVER · ES · SAPI ·S ATQZ, above it is a Tudor rose with the date 1597, beneath is a portcullis.  
‡ SIGIL · LIBE · GRAM · SCHOL · R · ELIZ · VICARIAT · HALIFAX.
107. CHESTER, HOSPITAL OF ST. JOHN IN Cast B.G.  
Oval, 94×60 mm., St. John Baptist standing holding the Holy Lamb in a circle. On each side of him is a kneeling angel holding up a thistle. Beneath is a demi figure praying.  
× SIGILL · HOSPITAL · SANCTI · JOHAN · BAPT · CESTR ·
108. CLUN, HOSPITAL OF Cast B.G.  
Oval, 63×44 mm., beneath a canopy a figure in armour and tabard, kneeling on a tasseled cushion. The tabard is emblazoned a bend between crosses crosslet a crescent for difference.  
‡ SIGILL · HOSPITALIS · SANCTA · ET · INDIVIDVA · TRINITATIS ·  
IN · CLUNN ·
109. EXETER, HOSPITAL OF ST. MARY MAGDALENE Cast B.G.  
Oval, 61×36 mm., St. Mary Magdalene standing holding a pot of



ointment in her right hand, a palm branch in her left. Beneath is a shield of arms, a castle gateway. The field of seal is diapered.

sigillu · hospitalis · sce · marie · magdene · civitatis · exoniæ

110. HADDESDON, HOSPITAL OF : Cast B.G.  
Oval, 80×47 mm., in a double canopied niche on the dexter St. Anthony holding his cross, at his feet an animal (? pig), on the sinister St. Clement in archiepiscopal vestments, his right hand holding a hammer, his left a pair of pincers.

sigillu : ospitalis : sancti : antonii : loci · de · bodstun

111. HADDESDON, HOSPITAL OF Cast B.G.  
Oval, 67×46 mm., in a double canopied niche, on the dexter St. Anthony holding his cross in his right hand, and a book in his left, on the sinister St. Clement, his right hand blessing, his left holding a hammer, beneath St. Anthony is a pig (?), beneath St. Clement a horseshoe.

sigillum · hospitalis · sancti · clement · loci · de · hoddesson

112. HARBLETON, HOSPITAL OF Cast B.G.  
Oval, 80×45 mm., St. Nicholas in pontificals, standing blessing. Field of seal diapered.

+ sigill . . . hospitalis sci nicholai de herbaltonie

113. KIRBY RAVENSWORTH, HOSPITAL OF ST. JOHN BAPTIST AT Cast B.G.  
Oval, 58×46 mm., a nimbed and robed figure of St. John Baptist standing amidst trees, holding the Holy Lamb, in a circle. Beneath him is the date 1555.

+ S-ELEMSINARIE-S-IOHANNIS-BABTISTE-DE-KIRBY  
RAVESWATH

114. NORWICH, HOSPITAL OF ST. STEPHEN IN Cast B.G.  
Oval, 71×45 mm., the stoning of St. Stephen, above is a crowned Tudor rose.

THIS-SEALL-BELONGI-TO . . . HOSPITAL-OF-SANT  
STEVEN IN-NORWICH.

115. NORTHAMPTON, ST. LEONARDS OF Cast B.G.  
Oval, 62×38 mm., in a canopied niche a standing figure of St. Leonard in episcopal vestments. Beneath is a shield of arms a castle gateway.

s · cœ' · domus · sci · leonardi · ivgta · norbampton.

116. STAMFORD, HOSPITAL OF Cast B.G.  
Oval, 70×44 mm., in a canopied niche of rich tabernacle work the symbol of the Trinity; God the Father holds a napkin by the corners in front of him in which appear three heads. Beneath

under a round arch is a demi figure praying and below him a shield of arms, ermine two bars; and a border charged with roundels.

. sigillū comūne : domus : elemosinarie stamford.

117. YORK, ST. MARY'S HOSPITAL BOOTHAM Cast B.G.  
Oval, 47×30 mm., Our Lady robed and crowned standing in a canopied niche with side shafts, the child Christ on her left arm. Beneath is a kneeling figure praying. In front of him a shield of arms, a saltire engrailed and an indented chief.  
S' HOSPITALIS : BEATE-MARIE DE BOVTHVM
118. YORK, ST. LEONARD'S HOSPITAL Cast B.G.  
Oval, 56×35 mm., a tonsured figure standing in a niche with side shafts and canopy, a crosier in his right hand, a book in his left, on his dexter is a shield of arms England. Beneath is a demi figure in gown and hood praying.  
S OFFICII-SCACCAR' HOSP' SCI LEONARD-EBOR.
119. KNOLL, GUILD OF Cast B.G.  
Oval, 80×45 mm., in a central canopied niche a standing figure of St. Anne nimbed and robed teaching Our Lady to read, in a smaller niche on the dexter is St. John Baptist and in a like niche on the sinister St. Laurence. Beneath in two round arched niches are two kneeling and praying figures.  
. s fratinitat' gilde · scōr' · jobis · baptiste · et · laurencii · ac ·  
scē · anne · de · knoll
120. THETFORD, GUILD OF ST. MARY OF Cast B.G.  
Oval, 66×43 mm., the Annunciation.  
SIGILLVM-FRATERNITATI-GILDE-BEATE-MARIE-IN-  
THETFORD.

#### VII.—OFFICIAL AND MUNICIPAL.

121. EDWARD I, CUSTOMS B.G.  
Round, 30 mm., armorial, England.  
S'ED'.REG'.ANGL'.DVC'AQIT'.AP'.SC̄M.MACH'
122. ADMIRAL OF ENGLAND, JOHN, EARL OF HUNTINGDON  
Cast C.H.H.B.  
Round, 64 mm., a ship of war at sea with high forecastle and stern, a short bowsprit and a lantern at the stem. The one mast is supported by three ropes, it ends in a cross and from it floats a pennant of two tails. Below the cross is a fighting top in which four spears rest. The sail is emblazoned with the admiral's arms England (*gules three leopards gold*) in a border of France

(*azure with golden liles*). Inside the border in the field are three ears of wheat.

**s iobis comit' butygdon d'ni de ivory tc admiralli' angl'  
bibne t acquitani.**

123. SUB-ADMIRAL OF ENGLAND Cast C.H.H.B.  
Round, 61 mm., a ship of war at sea with high forecastle and stern, bowsprit and in the bows a banner of the arms of France and England quarterly, at the stern a banner of a hart lodged and with collar and chain. The mast is upheld by four ropes and from it floats a pennant of two tails, with the cross of St. George. Below the pennant is a round gallery in which are three spears. The sails bear the arms of Holand, earls of Kent, England, within a silver border.
- sigillum : officii : subadmirallitatis : anglie .**
124. SOUTHAMPTON, SUBSIDY OF LEAD AT Cast B.G.  
Round, 28 mm., the crowned head of a king between two feathers, the pen through a scroll.
- . SVBSIDIVM : PANNORVM . SVTH'OS**
125. APPLEBY, COMMONALTY OF Cast B.G.  
Round, 64 mm., armorial, the arms of England (three leopards) on a triangular shield which hangs from an apple tree with leaves and fruit.
- + SIGILLVM : COMMVNITATIS : BVRGII : DE : APPILBI.**
126. BARNSTAPLE Cast B.G.  
Round, 51 mm., a bird walking.
- \* SIGILLVM : COMMVNE : BVRGI : BARNASTAPOLI**
127. BOSTON, STAPLE OF Cast B.G.  
Round, 32 mm., St. Botolph as abbot, holding crosier in right hand and a book to his breast in left, standing behind a wool pack.
- sigill + stapule + de + sancto + botulfo.**
128. CALAIS, MAYORALTY OF Cast B.G.  
Round, 48 mm., a wild boar passant among trees having round his neck a triangular banner charged with wavy a lion rampant.
- SIGILLVM : MAIORATVS : VILLE : DE : CALAIS.**
129. CANTERBURY, CITY OF Cast B.G.  
Round, 83 mm., the martyrdom of St. Thomas within the cathedral;



in a niche on each side is a king. Below is a demi figure of Our Lord blessing.

ICTIBUS : INMEÑS : THOMAS : QUI : CORRUIT : ENS :  
TVTOR : AB : OFFENS : VRBIS : SIT : CANTVRIENS.

This is only the reverse, the obverse bears a castle.

130. CARLISLE Cast B.G.  
Round, 80 mm., Our Lady, robed, crowned and nimbed seated, holding a lily in her right hand. The child Christ, seated on her left knee. He stretches out his right hand to the lily, his left holds a book.  
*Outer legend*—  
✦ S'COMMVNIS : CIVIVM : KARLIOLENSIS .  
*Inner legend*—  
AVE MARIA : GRACIA PLENA  
*Reverse* : Round, 80 mm., and cross between four roses and a rose at the intersection.  
✦ S'COMMVNIS : CIVIVM : KARLIOLENSIS
131. CHESTER, MAYOR AND CITIZENS OF Cast B.G.  
Round, 74 mm., a castle with portcullised gateway and surrounding walls and towers. Above the central towers of the gate is a crowned leopard with a sheaf on each side of it.  
✦ SIGILLVM COMVNE MAIORIS ET CIVIVM CIVITATIS  
CESTRIE
132. CHESTER, STATUTE MERCHANT AT Cast B.G.  
Round, 42 mm., the crowned head and bust of a king, on his breast a leopard, a castle at each side.  
.S'EDW'REG'ANGL'AD : RECOGN'DEBITOR APD'CESTRIAM
133. DOVER Cast B.G.  
Round, 77 mm., St. Martin of Tours riding out of a castle gateway, cutting his cloak with his sword and handing part of it to a beggar with crutch, who stands behind his horse. The border of seal is surrounded by leopards of England. There is no legend.
134. DUNFERMLINE, COCKET SEAL OF Cast B.G.  
Round, 54 mm., St. Margaret, the Queen of Scotland standing on a pedestal, robed and crowned. Holding a sceptre in her right hand

and a book in her left. On her dexter is a shield of the arms of St. Edward the Confessor. The field of seal is floriated.

✦ S COKETE.REGATIS AGIS.DE.DVNFERMELIN.

135. EDINBURGH, CITY OF B.G.

*Obverse*: Round, 61 mm., yellow wax, a castle gateway standing upon a rock; a doorway, with portcullis, in the centre flanked upon each side by a round battlemented tower with a pointed roof, upon the apex of which is a small cross. A battlemented parapet runs between these two towers and over the doorway above this rises a high hexagonal tower, a cross loop window in the centre and with a pointed gable roof and a small cross at each end of the gable. The field is diapered with a running foliage design.

sigillum . . . . . burgi de edynburgh

*Reverse*: St. Giles nimbed and in monastic dress standing in a central canopied niche. He holds a book to his breast with his left hand and his right rests on the head of a hind which leaps up to him, an arrow is sticking in his right arm. The central compartment is flanked with tabernacle work, and the field is diapered.

[EGI]DII SINGNO CREDITIS CO[RDE BENNIG]NO.

136. EXETER, MAYORALTY OF Cast B.G.

Oval, 38×29 mm., in a canopied niche a demi figure of the Pope holding a church in his right hand, a cross in his left. Beneath is a lion's head crowned. In the field on the dexter sword of St. Paul on the sinister keys of St. Peter.

S MAIORATVS : CIVITATIS : EXONIE.

137. GLOUCESTER, STATUTE MERCHANT AT Cast B.G.

Round, 54 mm., the crowned head and bust of a king, on his breast a leopard of England, the field of the seal strewn with horse shoes and nails.

× S'EDWARDI : REG' : ANGL' : AD : RECOGN' : DEBITOR' :  
APVD : GLOVCESTR :

138. GLOUCESTER, BAILIFF OF Cast B.G.

Round, 28 mm., a castle gateway with two flanking towers.

✦ SIGILL : BALLIVOR : GLOVCESTRIE

139. NORWICH Cast B.G.  
 Round, 57 mm., a high battlemented tower within walls with towers and battlements. In the centre is a gateway with portcullis. Beneath is a leopard of England. On each side in the field, is a spray with leaves and flowers (roses); a like spray is between each word of the legend.

**sigillum . comune . civitatis . norwici**

140. SHREWSBURY Cast B.G.  
 Round, 77 mm., in front is a bridge of two arches crossing a river (Severn) and leading to the open gateway of a walled city, with round towers and battlements and two other portcullised gates; within the walls is a conventional representation of the city with its Abbey church; the spire of the latter passes through the border and forms the cross at the beginning of the legend. Above the central gate is a shield of arms, England, on the dexter is a like shield bearing a plain cross (St. George) on the sinister one charged with three leopards' faces.

+ sigillu' + comune + libertatis + ville + salopesburie +  
 factu + ano + gre' m'cccc'xxv +

141. YARMOUTH Cast B.G.  
 Round, 77 mm., a fishing boat in water with raised platforms in the bows and stern, a bowsprit and single mast upon which is a cross yard to which the sail is reefed up, two men sit across the yard. A 'crow's nest' is near the top of the mast and a short pennant flies from the truck. One man is at the rudder, one in the stern castle and another in the centre. Three herrings swim in the sea beneath.

SIGILLVM COMVNITATIS DE GVRNEMVTHA :

The following seals, for which the author is indebted to Dr. H. H. E. Craster, were received too late to be included in their proper place. They are taken from MS. Ashmole No. 799, a volume of Robert Glover's collections.

142. ACTON, WILLIAM SON OF WILLIAM OF Fol. 42; A.D. 1351.  
 Round, armorial, a lion rampant within a border enrailed.

No legend given.

See No. 6 in this catalogue. The document is dated at Newcastle-upon-Tyne.

143. BURNTON, THOMAS OF Fol. 43; A.D. 1346.  
Round, armorial, on a chevron, between three griffins, three roundels.  
× SIGILLVM·THOMAE·DE·BVRNTON  
Glover notes 'other seales of these armes having no roundels on the chevron.' See No. 128 in this Catalogue.
144. FRISMARYS, JOHN OF Fol. 43; A.D. 1338/39.  
Round, armorial, a dance, charged with a molet.  
✦ SIGILLVM·IOHANNIS·DE·FRISMARYS·  
A prominent Newcastle citizen in the middle of the fourteenth century, bailiff of the town for several years (Welford I, *passim*).
145. GILBERT, WALTER SON OF Fol. 43; n.d.  
'The seale very large, a man on horseback.'  
✦ SIGILLVM·WALTERI·FILII·GILBERTI·  
Walter fitz Gilbert lord of Bolam living in time of King John. Pedigree Hodgson II, i, 333, see also *Ibid* III, i, 205-206 and III, iii, *passim*.
146. ILDERTON, THOMAS OF Fol. 93<sup>a</sup>; A.D. 1521.  
Large round, armorial, three bougets, mantled helm surmounted by crest of a horse's head. All within a quatrefoiled panel.  
S THOME : DE : ILDERTON.
147. STROTHER, MAUD DEL Fol. 42; A.D. 1365.  
Round, armorial, on a bend cotised five lozenges conjoined.  
No legend given.  
Styléd widow of William del Strother. She was the daughter and coheiress of Thomas Graper. Her husband William Strother was several times mayor of Newcastle between 1355-1360 and M.P. for the town in 1358 and 1360. (See N.C.H. VII, 391 and XI, 132, also *Arch. Ael.*, 3rd Ser., I, 68). The arms are those of her own family who bear spindles (lozenges) on a bend (See No. 323 in this catalogue).
148. GREATHAM HOSPITAL Hutchinsonson III, 103.  
Oval, in a canopied niche, the dean in choir habit holding in front of him, clasped in his arms, the hull of a ship in the bows of which is a shield of arms a plain cross, in the stern a like shield France (modern) and England quarterly, above the figure is a shield bearing a cross flory between four birds (Edward the Confessor). Beneath him on the exergue is—**at·pbs·pagn**.  
**offici ·· elemosinarii ·· regis ·· bencici ·· quinti ·· anglie ··**

This seal is used by the hospital but there is no record how or why it came to be used. It is obviously the seal of Stephen Payn dean of Exeter 4 Nov. 1415, until 17 May, 1419, when he died. He was apparently also almoner to Henry v. The plain cross on his dexter is probably his own shield. It is illustrated Hutchinson III, p. 103.

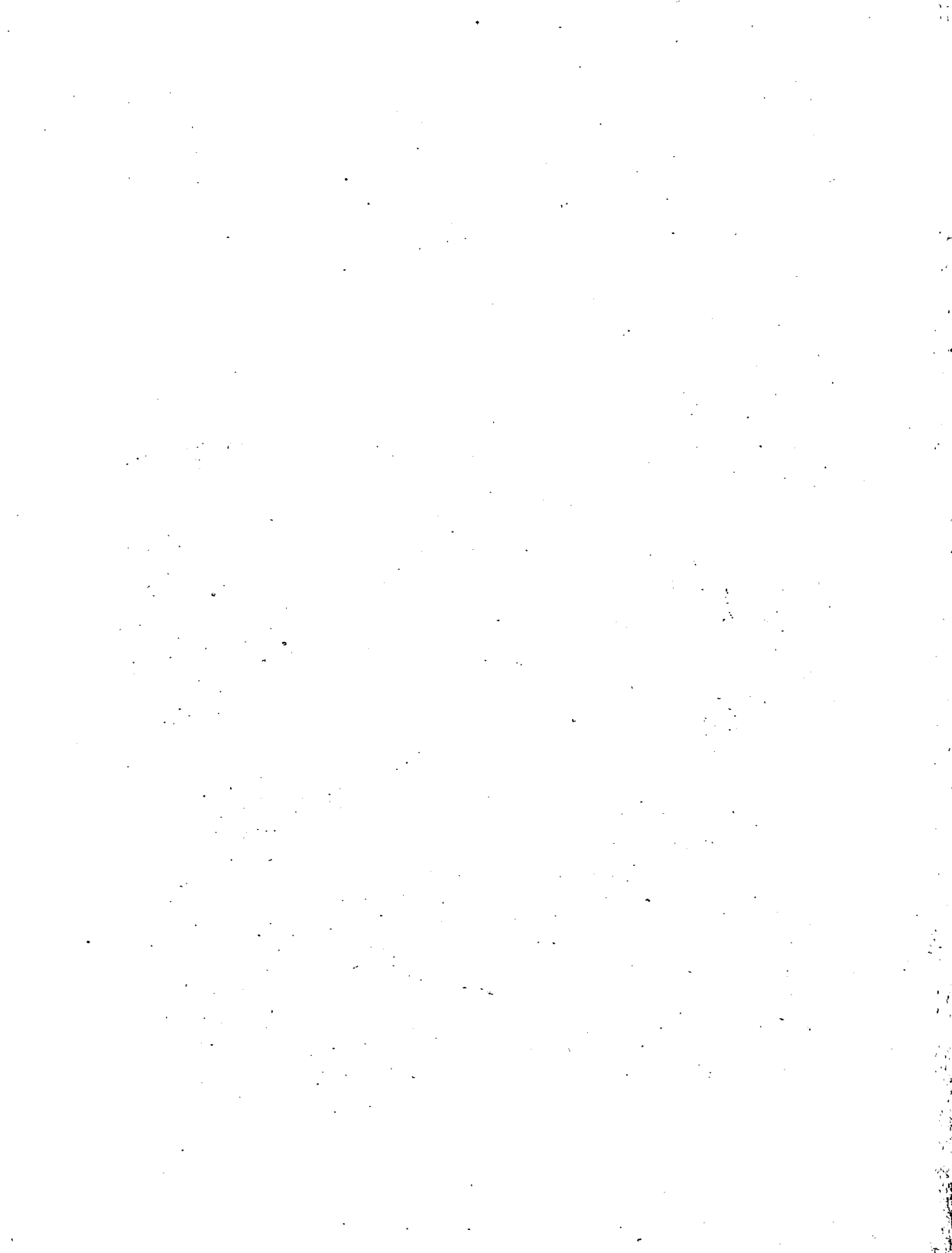
149. BELLASIS, ROBERT Hist. MSS. Com. rep. various coll.,  
vol. II, p. 17; A.D. 1415/16.  
Round, armorial, a chevron between three fleurs de lis.  
No legend.  
Given at Durham, he is styled of Henknoll.
150. BILLINGHAM, JOHN OF *Ibid*, p. 14, c. 1270/80.  
Round, a merchant's mark.  
S JOHAN' BILLINGHAM.  
See No. 79A in this catalogue.
151. COLVILLE, THOMAS OF *Ibid*, p. 7; A.D. 1344-  
Round, armorial, a fess three roundels in chief.  
Legend illegible.  
Styled knight.
152. COLVILLE, WILLIAM OF *Ibid*, p. 8; A.D. 1365-  
Round, black, armorial, a fess in chief three roundels.  
No legend given.  
Styled knight son and heir of sir Robert Colville knight.
153. COLVILLE, JOHN OF *Ibid*, p. 8; A.D. 1380-  
Round, black, armorial, a fess in chief three besants.  
Legend illegible.  
Styled lord of the ville of Dale, son and heir of sir William Colville. See Pedigree N.C.H., I, 181.

END OF CATALOGUE.



NORTHUMBERLAND AND DURHAM SEALS. IV

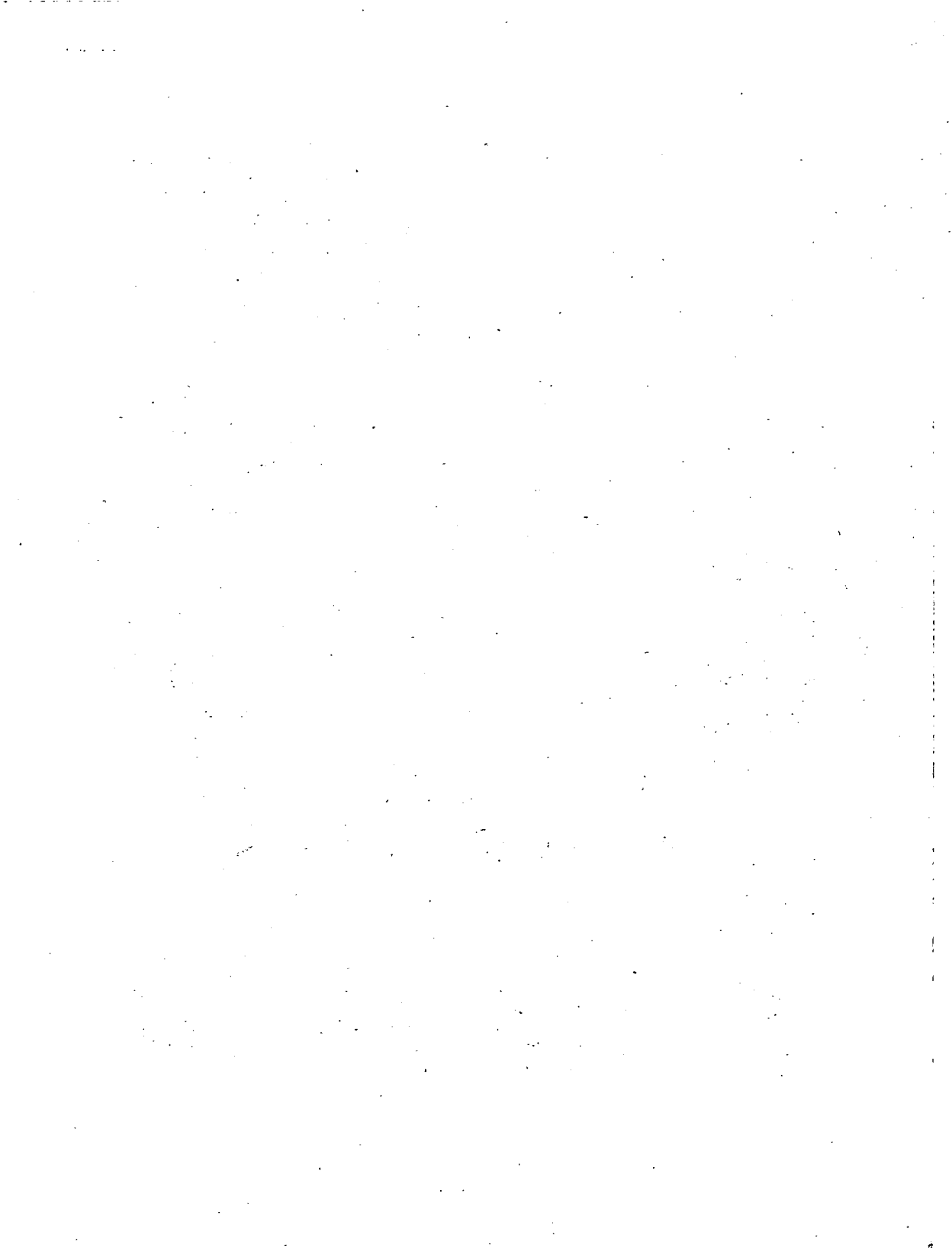
From photographs by C. H. Hunter Blair





NORTHUMBERLAND AND DURHAM SEALS. V  
From photographs by C. H. Hunter Blair







NORTHUMBERLAND AND DURHAM SEALS. VI  
From photographs by C. H. Hunter Blair

