



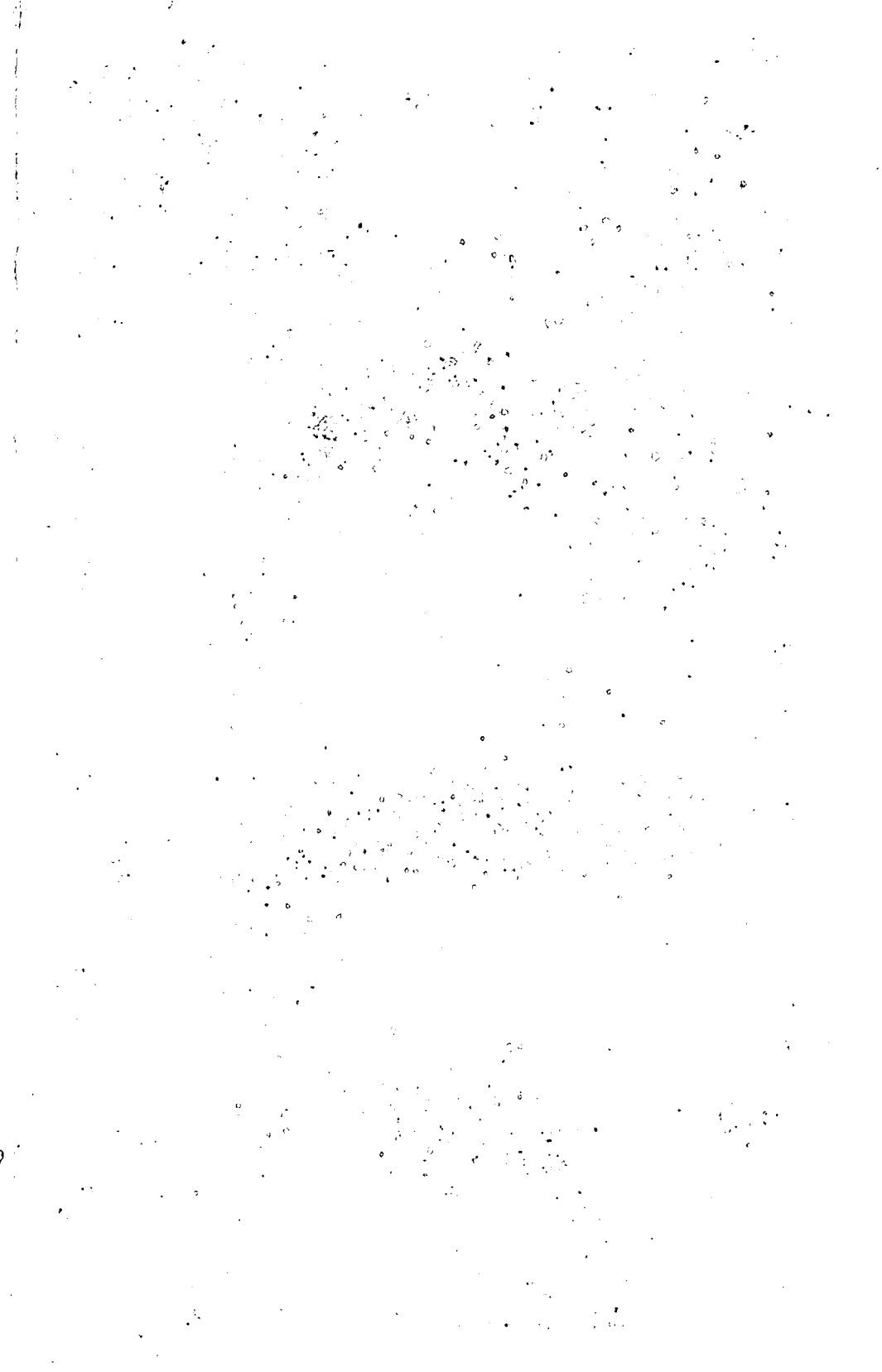
Gateshead Public Library.

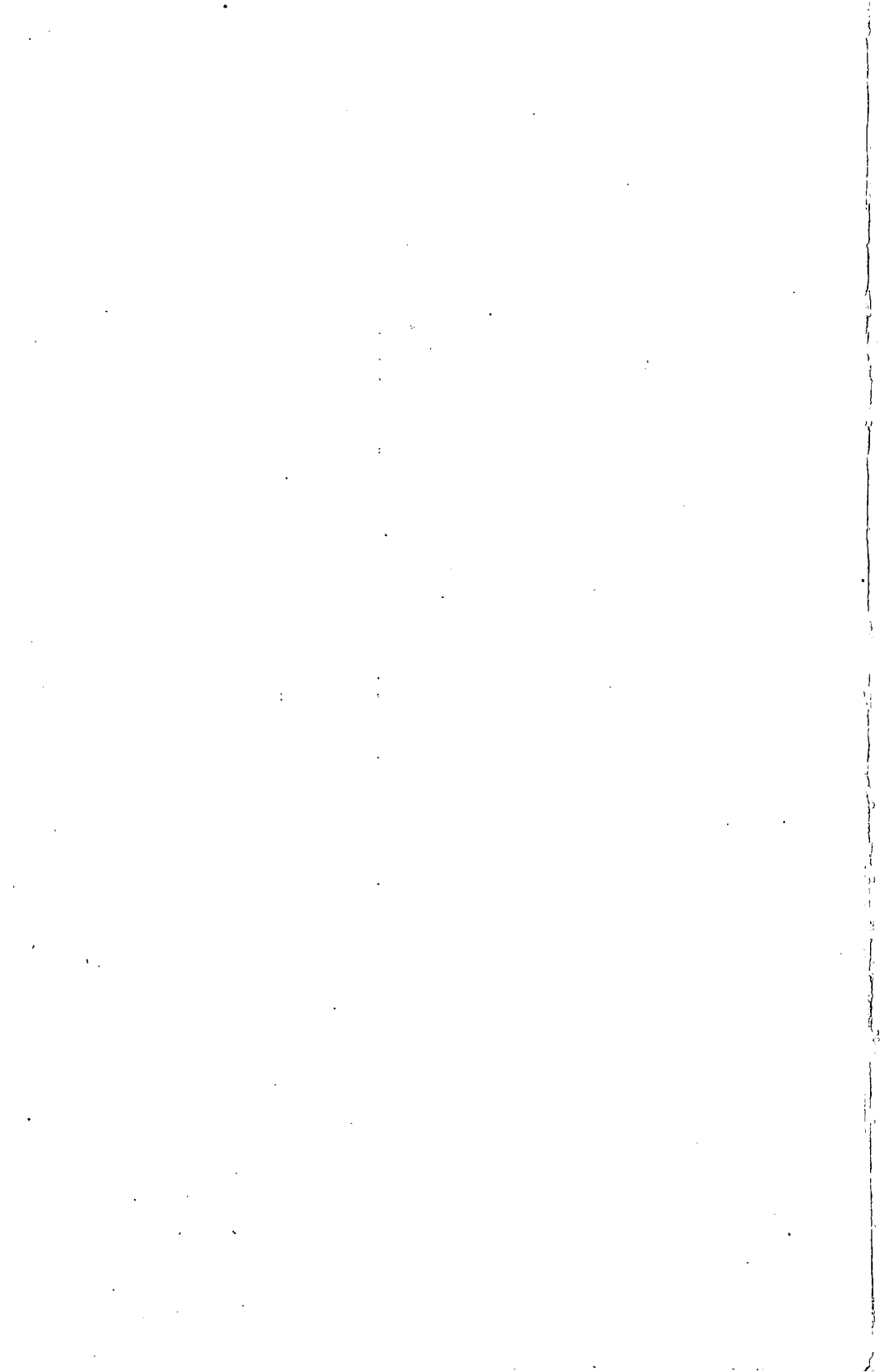
REFERENCE DEPARTMENT.

Accession No. *3615* Shelf No. *L942.821*

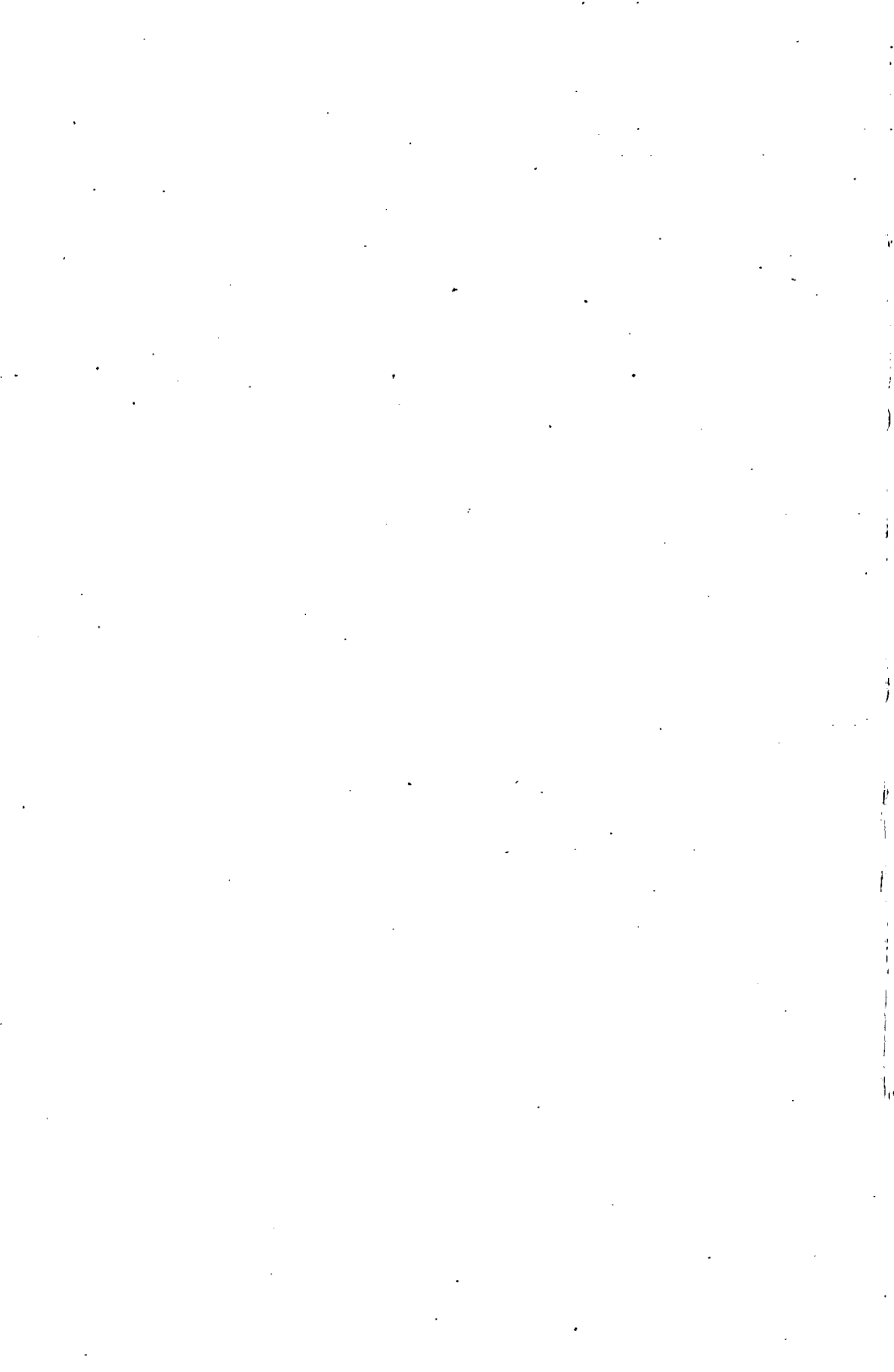
THIS Book belongs to the Reference Department of the Gateshead Public Library, and must be returned into the hands of the Librarian or his Assistants.

On no pretence whatever can it be taken out of this room.





THE PUBLICATIONS OF THE
SOCIETY OF ANTIQUARIES
OF NEWCASTLE UPON TYNE



THE PUBLICATIONS OF THE
SOCIETY OF ANTIQUARIES
OF NEWCASTLE UPON TYNE



FOURTH SERIES, VOL. XIII.
FOR THE YEAR 1936





Arch. Ael. 4th ser., vol. xiii.

Frontispiece



ROBERT CARR BOSANQUET.

ARCHAEOLOGIA AELIANA

OR

MISCELLANEOUS TRACTS
RELATING TO ANTIQUITY



EDITED BY
C. H. HUNTER BLAIR

PRINTED FOR THE SOCIETY OF
ANTIQUARIES OF NEWCASTLE UPON TYNE
BY NORTHUMBERLAND PRESS LIMITED
MCMXXXVI

Collated by	GH
Stack No.	3615
Vendor	
Price	
Date	14.9.36
Bound	
Replaced	
Book No.	L942.82
Class No.	

NEWCASTLE UPON TYNE:
NORTHUMBERLAND PRESS LIMITED, PRINTERS AND PUBLISHERS
WATERLOO HOUSE, THORNTON STREET

CONTENTS

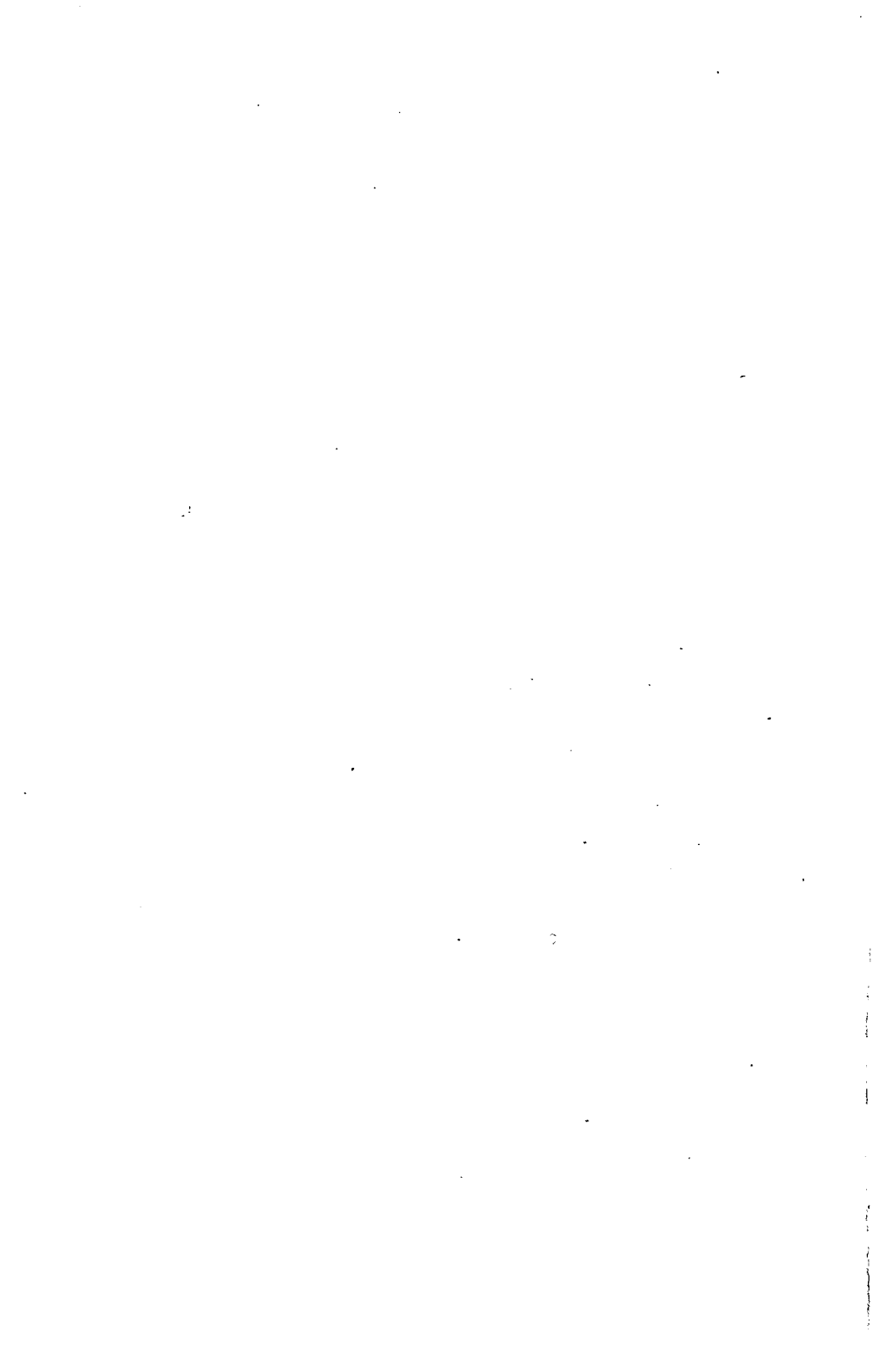
	PAGE
List of plates	ix
Illustrations in the text	xi
Contributions of drawings, plans and photographs	xiii
List of council and officers for 1936	xv
I.—Robert Carr Bosanquet. By R. H. Hodgkin	1
II.—Local armorials of the eighteenth century. By C. H. Hunter Blair	9
III.—Members of parliament for the boroughs of Northumberland, 1295-1377	59
IV.—The Newcastle galley. By W. R. G. Whiting	95
V.—A cruciform brooch from Benwell. By Parker Brewis	117
VI.—Tynemouth priory. By R. Neville Hadcock	122
VII.—A Roman skillet from South Shields. By the late Robert Carr Bosanquet, edited by Ian A. Richmond	139
VIII.—Anthony Hedley: a centenary memoir. By Eric Birley	152
IX.—Excavations at High Rochester and Risingham, 1935. By Ian A. Richmond	170
X.—The Stanegate at North Tyne. By R. P. Wright	199
XI.—Excavation of two Bronze Age barrows at Kirkhaugh, Northumberland. By Herbert Maryon	207
XII.—Excavations at Chesterholm-Vindolanda: third report. By Eric Birley, Ian A. Richmond and J. A. Stanfield	218
XIII.—Milecastles on Hadrian's wall explored in 1935-36. By F. G. Simpson, I. A. Richmond, Eric Birley, G. S. Keeney and K. A. Steer	258
XIV.—Another record of Lollius Urbicus from Corstopitum. By Eric Birley	274

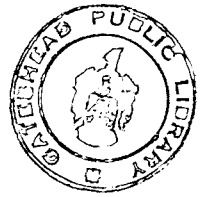
	PAGE
XV.—Excavations at Dunstanburgh castle in 1931. By the late R. C. Bosanquet, edited by John Charlton . . .	279
XVI.—Excavations of a long and a round cairn on Bellshiel Law, Redesdale. By Nancy Newbiggin . . .	293
XVII.—An inscribed openwork gold ring from Corstopitum. By John D. Cowen	310
XVIII.—Reviews: 1. Corbridge Roman Station	320
2. Gazetteer of Roman remains in East Yorkshire . . .	323
Index	329
Publications of the society	347



PLATES

	<i>Frontispiece</i>
	<i>Facing page</i>
Robert Carr Bosanquet	58
I—III.—Local armorials	120
IV.—The Benwell brooch	120
V.—The Benwell and Londesborough brooches	138
VI.—Plan of Tynemouth priory	150
VII—VIII.—Roman skillet	170
IX.—Risingham and High Rochester	182
X—XI.—High Rochester (details)	182
XII—XIV.—Sections High Rochester (<i>Bremenium</i>)	198
XV—XVI.—Risingham (details)	198
XVII.—Section and elevation, Risingham	242
XVIII—XIX.—Chesterholm (details)	242
XX.—Plan of buildings at Chesterholm	272
XXI.—Milecastles 19 and 20	274
XXII.—Corstopitum: inscription of A.D. 139	308
XXIII.—Round and long cairns: Bellshiel Law	308
XXIV.—Plan of Bellshiel, long cairn	318
XXV.—Roman gold ring from Corstopitum	

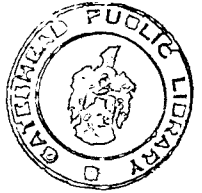




ILLUSTRATIONS IN THE TEXT

	PAGE
Sections of long ship and galley	107
Profile and plan of long ship and galley	111
Cross-bow brooches	119
North wall, western range, Tynemouth priory	125
Plan of presbytery, Tynemouth priory	127
Plan of presbytery, Tynemouth priory	128
South transept and presbytery, Tynemouth priory	131
Roman skillets: comparative designs	147
N-W. angle, Bremenium	173
Plan of Risingham	185
Plan and sections, west gate, Risingham	187
South gate, Risingham	189
Stanegate at North Tyne	203
Map showing site of Bronze Age barrows near Kirkhaugh	209
Plan of barrow near Kirkhaugh	210
Objects found in barrow	213
Rubbers from barrows	215
Plan of <i>principia</i> : Chesterholm	222
Plan of <i>principia</i> : Chesterholm	226
Plan of <i>principia</i> : Chesterholm	230
Plan of west gate: Chesterholm	234
Plan of east gate: Chesterholm	237
Figured samian ware	247
Samian ware	249

	PAGE
Samian ware	251
Samian ware	253
Samian ware	255
Samian ware	256
Plans of milecastles nos. 19 and 20	261
Plan of milecastle no. 33	263
Plan of milecastle no. 38	264
Inscription on tombstone	267
Plan of milecastle no. 39	268
Plan of milecastle no. 42	269
Plan of milecastle no. 47	271
Sketch plan of Dunstanburgh	280
Prehistoric objects, Dunstanburgh	283
Mediaeval pottery, Dunstanburgh	287
Mediaeval objects, Dunstanburgh	291
Plan of long cairn: Bellshiel	299
Flints and stone: Bellshiel	300
Plan of round cairn: Bellshiel	302
Roman ring: Corstopitum	311



The thanks of the society are given to the following :—

MRS. R. C. BOSANQUET for the photograph of her late husband on frontispiece.

MR. C. H. HUNTER BLAIR for photographs on plates I-III.

MR. PARKER BREWIS for photographs on plates IV and V and for drawings on page 119.

MR. W. R. G. WHITING for drawings on pages 107 and 111.

MR. R. NEVILLE HADCOCK for plan of Tynemouth priory on plate VI and for drawings on pages 125, 127, 128 and 131.

The late R. C. BOSANQUET for photographs on plates VII and VIII.

MR. IAN A. RICHMOND for drawings on pages 147, 173, 185, 187, 189, 222, 226, 230, 234, 237, 261, 263, 264, 267, 268, 269 and 271. Also for plans and sections on plates XII, XIII, XVII and XX. Also for photographs on plates IX, X, XI, XV and XVI.

MR. F. AUSTIN CHILD for sections on plate XIV.

MR. ERIC BIRLEY for photographs on plates XVIII, XIX and XXII; for the drawings of samian ware on pages 255, 256, and for all the blocks of samian ware reproduced on pages 247, 249, 251, 253, 255 and 256. Also for plans on pages 263, 264 and 267.

- MR. J. A. STANFIELD for the drawings of samian ware on pages 247, 249, 251 and 253.
- MR. R. P. WRIGHT for photograph of map on page 203.
- MR. HERBERT MARYON for plans and drawings on pages 209, 210, 213 and 215.
- MR. V. R. ABBOTT for plan on plate xx.
- MR. JOHN CHARLTON for plan on page 280 and for drawings and sections on pages 283, 287 and 291.
- MISS N. NEWBIGIN for photographs on plate xxiii, for the plan on plate xxiv, and for plans and drawings on pages 299, 300 and 302.
- MR. J. D. COWEN for the photographs on plate xxv and for the drawing on page 311.
- MR. F. G. SIMPSON for plans on pages 261 and 268.

THE COUNCIL AND OFFICERS OF THE
SOCIETY FOR THE YEAR MCMXXXVI.

President.

CHARLES HENRY HUNTER BLAIR, M.A., F.S.A.

Past-President.

FREDERICK WALTER DENDY, O.B.E., D.C.L., F.S.A.

Vice-Presidents.

PARKER BREWIS, M.A., F.S.A.
OSWIN J. CHARLTON, M.A., LL.M., F.S.A.
J. WIGHT DUFF, M.A., D.Litt., LL.D., F.B.A.
MAJOR ROBERT CECIL HEDLEY, T.D.
SIR ARTHUR M. OLIVER, Kt., O.B.E., M.A.
LT.-COL. G. R. B. SPAIN, C.M.G., F.S.A.
THOMAS TAYLOR, F.S.A.

Secretaries.

JOHN OXBERRY, F.S.A.
HERBERT LEWIS HONEYMAN, A.R.I.B.A.

Treasurer.

JAMES A. HOUSTON

Editor of *Archæologia Aeliana*.

C. H. HUNTER BLAIR

Editor of *Proceedings*.

PAUL J. BROWN

Librarian.

THOMAS WAKE

Curators.

LT.-COL. G. R. B. SPAIN, C.M.G., F.S.A.
JOHN DAVID COWEN, M.A., F.S.A.

Auditor.

THOMAS PERCY PARMETER

Council.

ROBERT J. SCOTT BERTRAM, M.A.
ERIC BARFF BIRLEY, M.A., F.S.A.
WILLIAM PERCY HEDLEY, F.S.A.
R. P. RANKEN LYLE, M.A., M.D.
JAMES McINTYRE
EDWARD RICHMOND NEWBIGIN
IAN ARCHIBALD RICHMOND, M.A., F.S.A.
REV. THOMAS ROMANS, M.A., F.S.A.
WILLIAM C. SODEN-BIRD
PROF. CHARLES EDWIN WHITING, M.A., D.D., B.C.L., F.S.A.

Keeper of the Society's coins.

GILBERT H. ASKEW

Warden of Keep.

JOHN TEAGUE

Attendant at Black Gate.

MRS. JOHN TEAGUE

